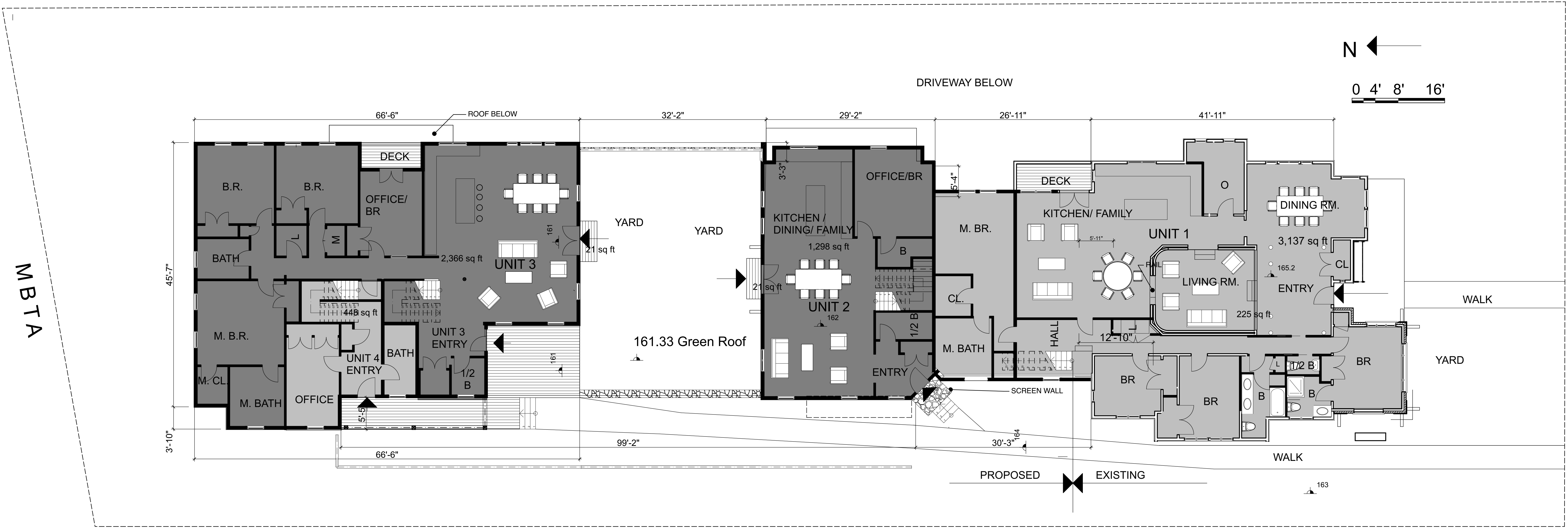
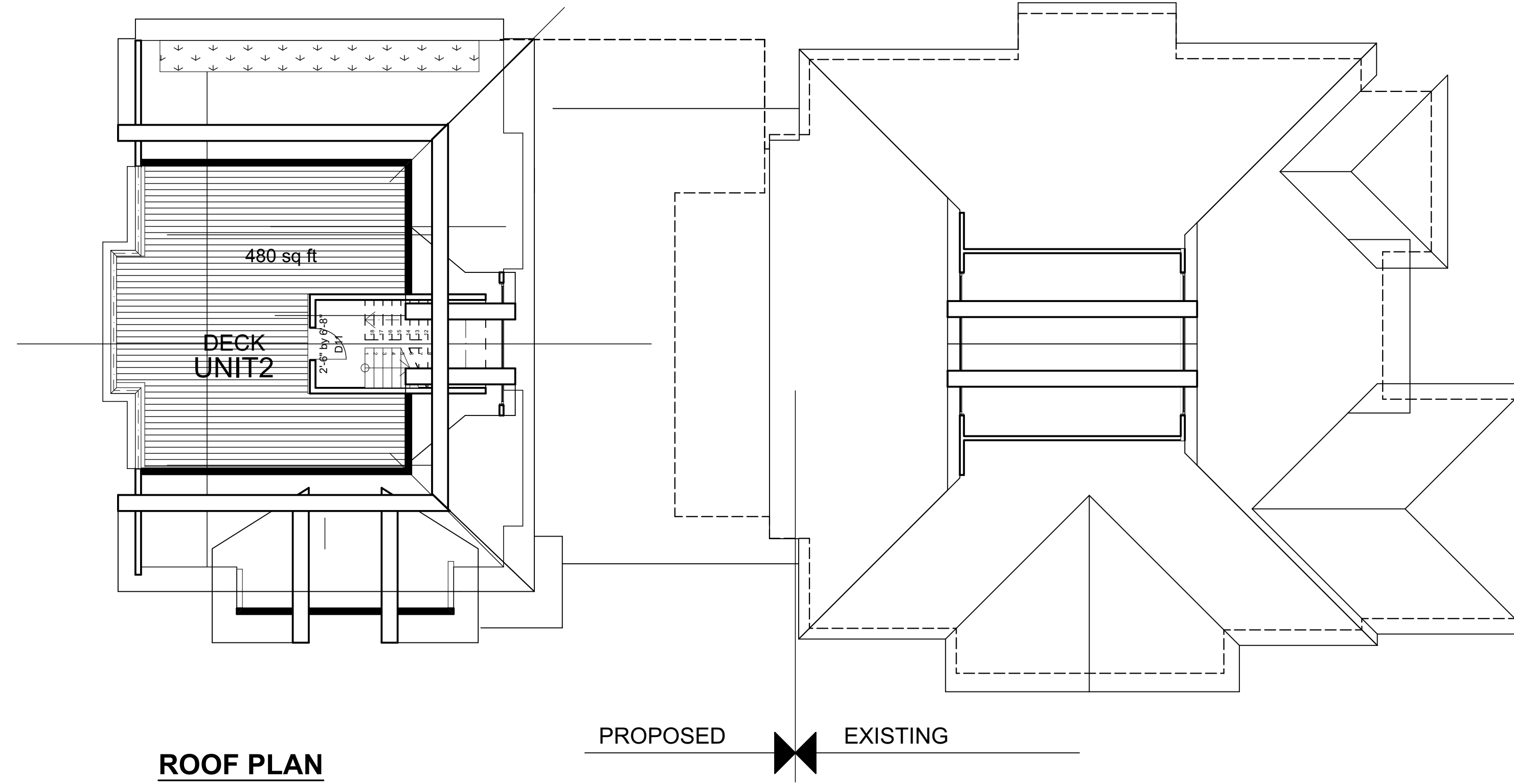
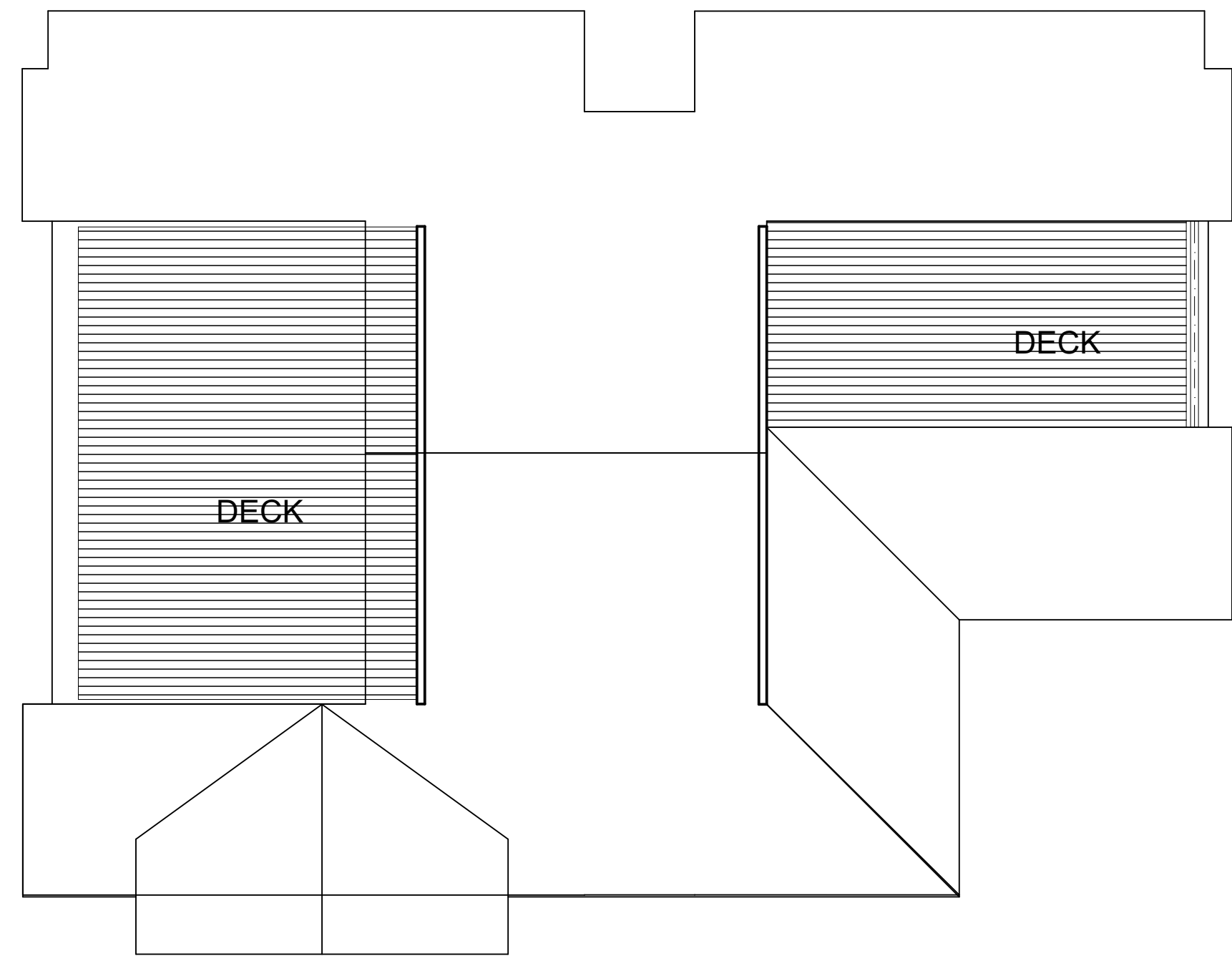


VIEWS FROM WARREN STREET

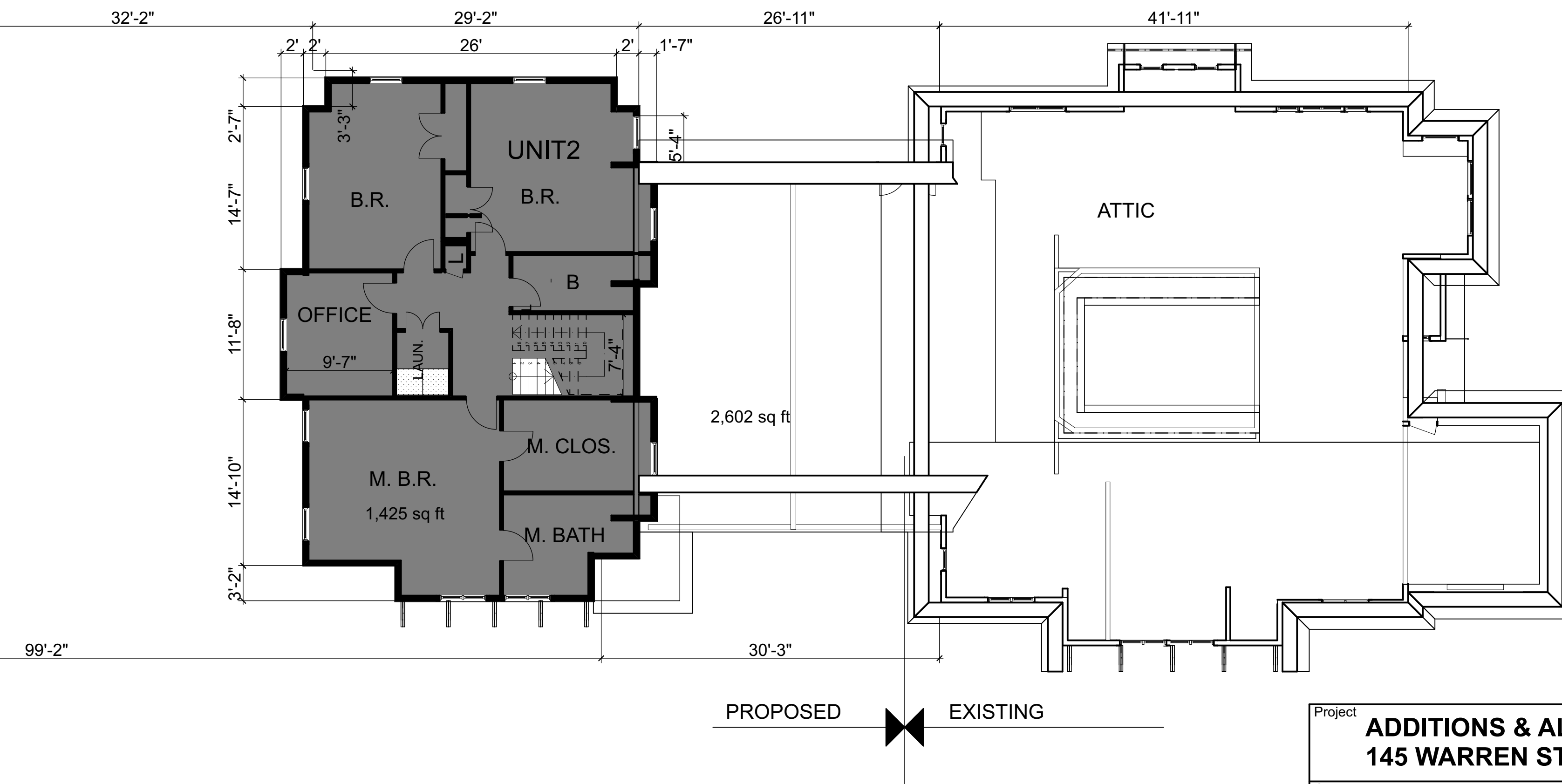
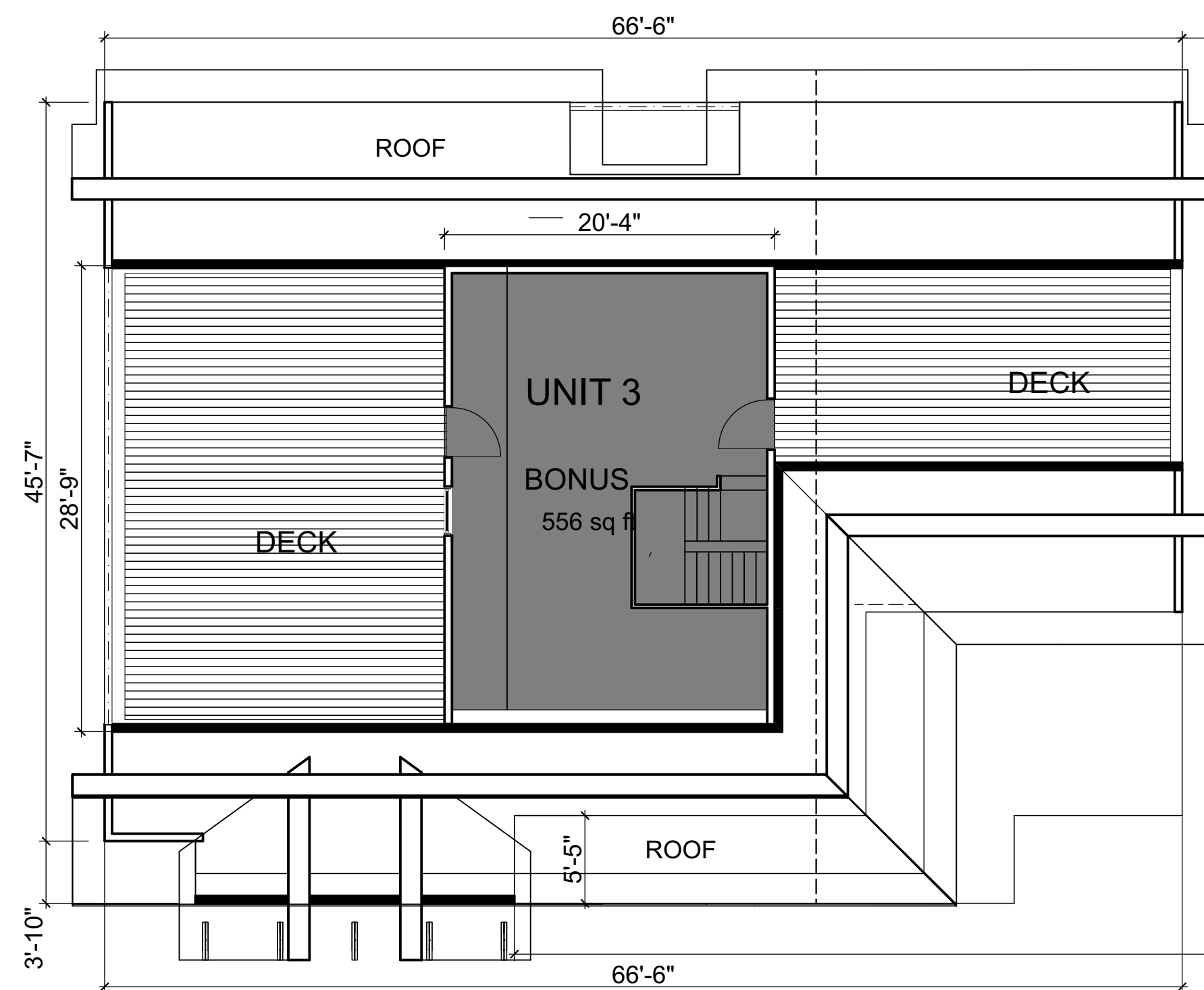
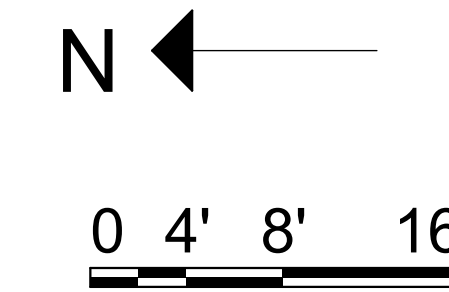
Project	ADDITIONS & ALTERATIONS TO 145 WARREN STREET, NEWTON MA	4-2-19
Owner	145 WARREN ST. LLC	
Architect	SANGIOLO ASSOCIATES ARCHITECTS 9 Skeheconet Way, W. Haverhill MA 617 272 5402 www.sangiolo.net	
Drawing	LOWER LEVEL / SITE PLAN	A1



Project	ADDITIONS & ALTERATIONS TO 145 WARREN STREET, NEWTON MA	4-2-19
Owner	145 WARREN ST. LLC	
Architect	SANGIOLO ASSOCIATES ARCHITECTS 9 Skeheconet Way, W. Harwich MA 617 272 5402 www.sangiolo.net	
Drawing	FIRST FLOOR PLAN	A2

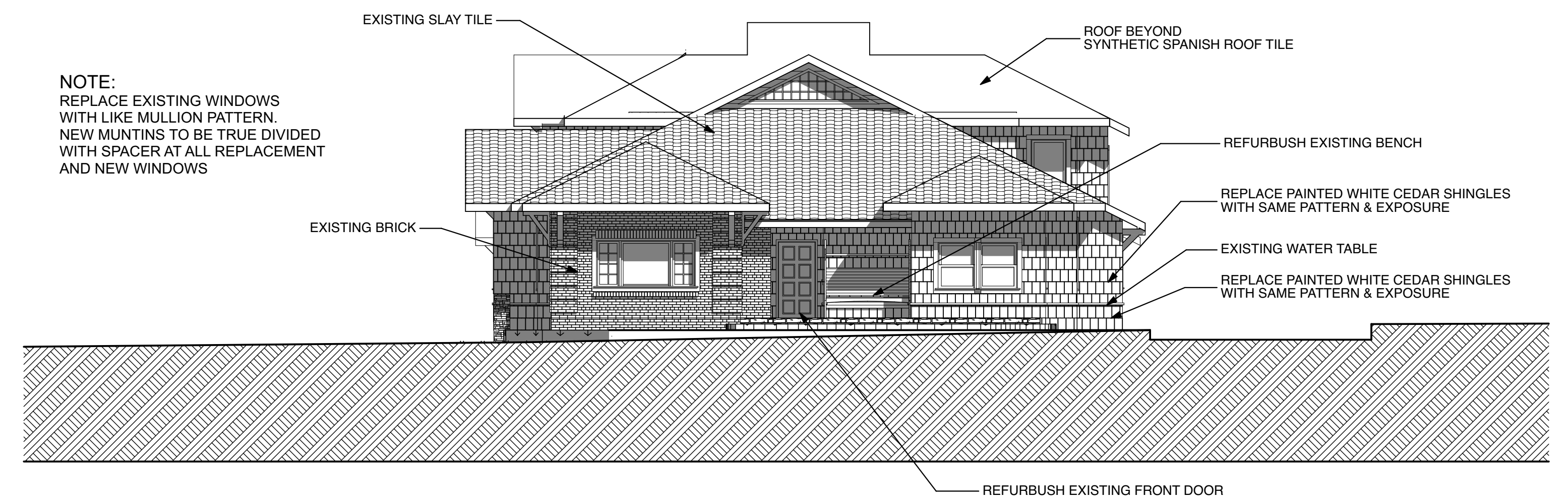
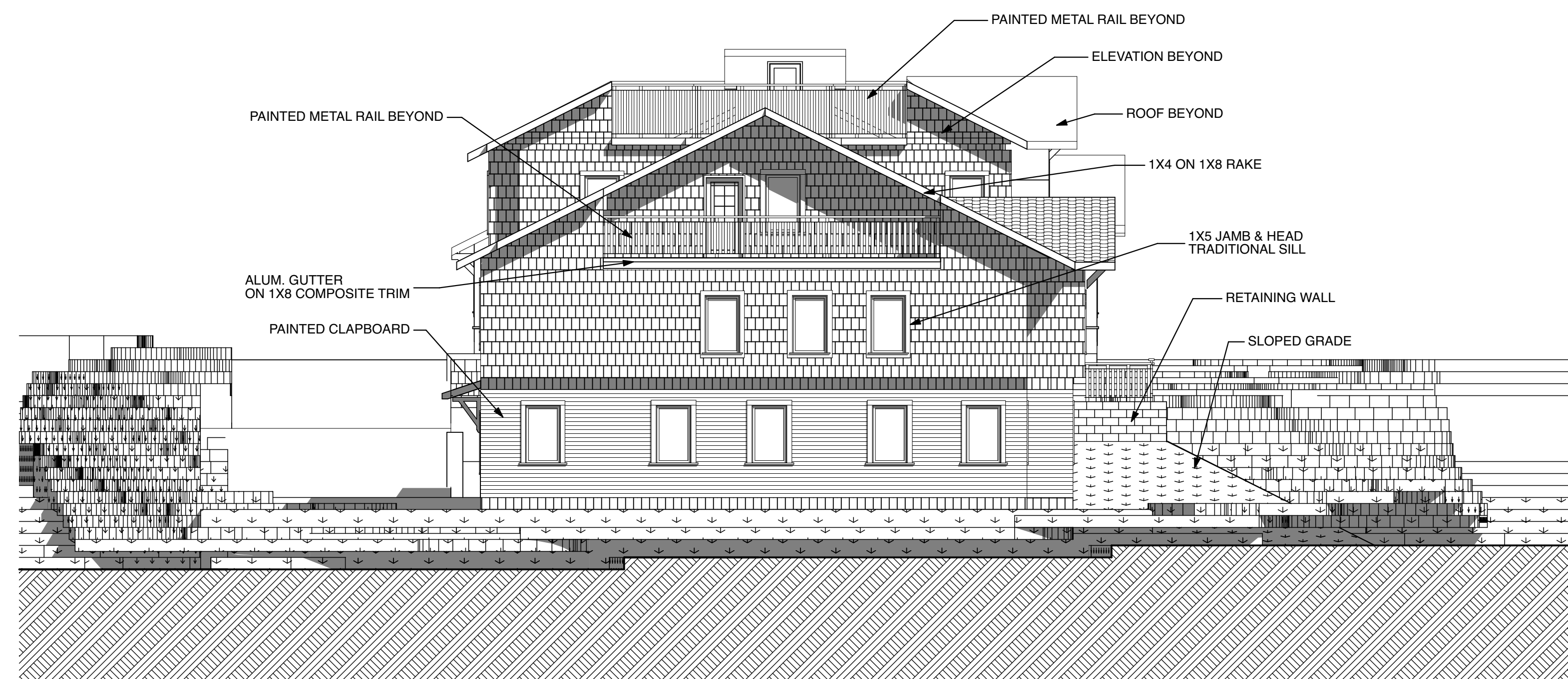
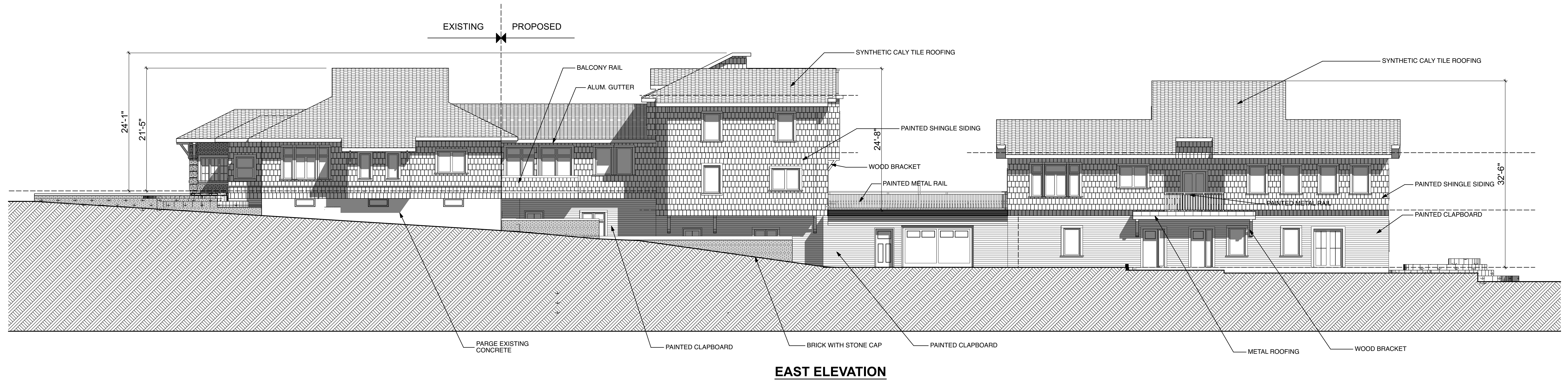


ROOF PLAN



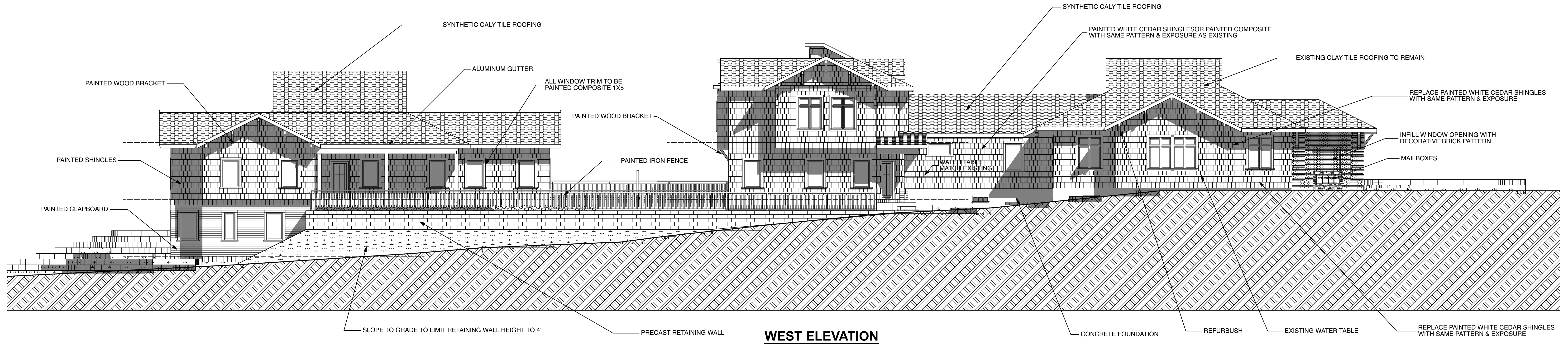
SECOND FLOOR PLAN

Project	ADDITIONS & ALTERATIONS TO 145 WARREN STREET, NEWTON MA	4-2-19
Owner	145 WARREN ST. LLC	
Architect	SANGIOLO ASSOCIATES ARCHITECTS 9 Skecheconet Way, W. Harwich MA 617 272 5402 www.sangiolo.net	
Drawing	SECOND FLOOR PLAN & ROOF PLAN	A3

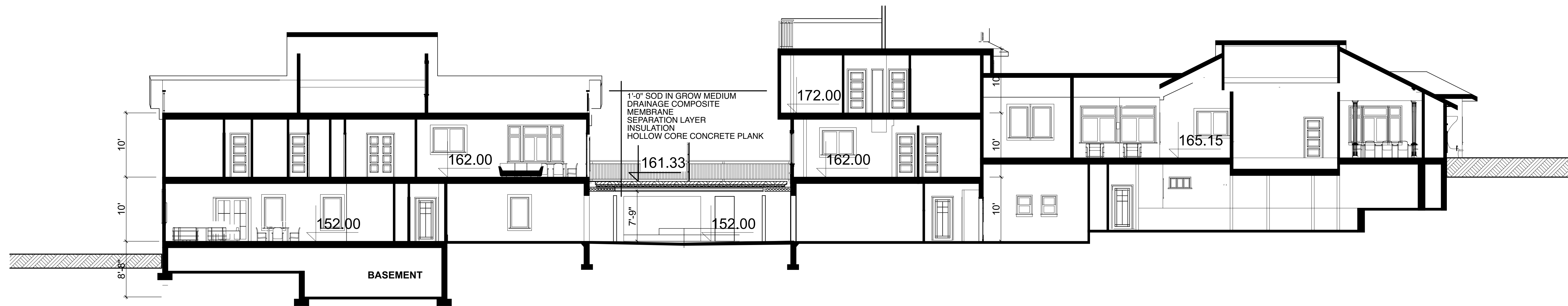


NOTE:
REPLACE EXISTING WINDOWS WITH LIKE MULLION PATTERN. NEW MUNTINS TO BE TRUE DIVIDED WITH SPACER AT ALL REPLACEMENT AND NEW WINDOWS

Project	ADDITIONS & ALTERATIONS TO 145 WARREN STREET, NEWTON MA	4-2-19
Owner	145 WARREN ST. LLC	
Architect	SANGIOLO ASSOCIATES ARCHITECTS 9 Skeheconet Way, W. Harwich MA 617 272 5402 www.sangiolo.net	
Drawing	ELEVATIONS	A4

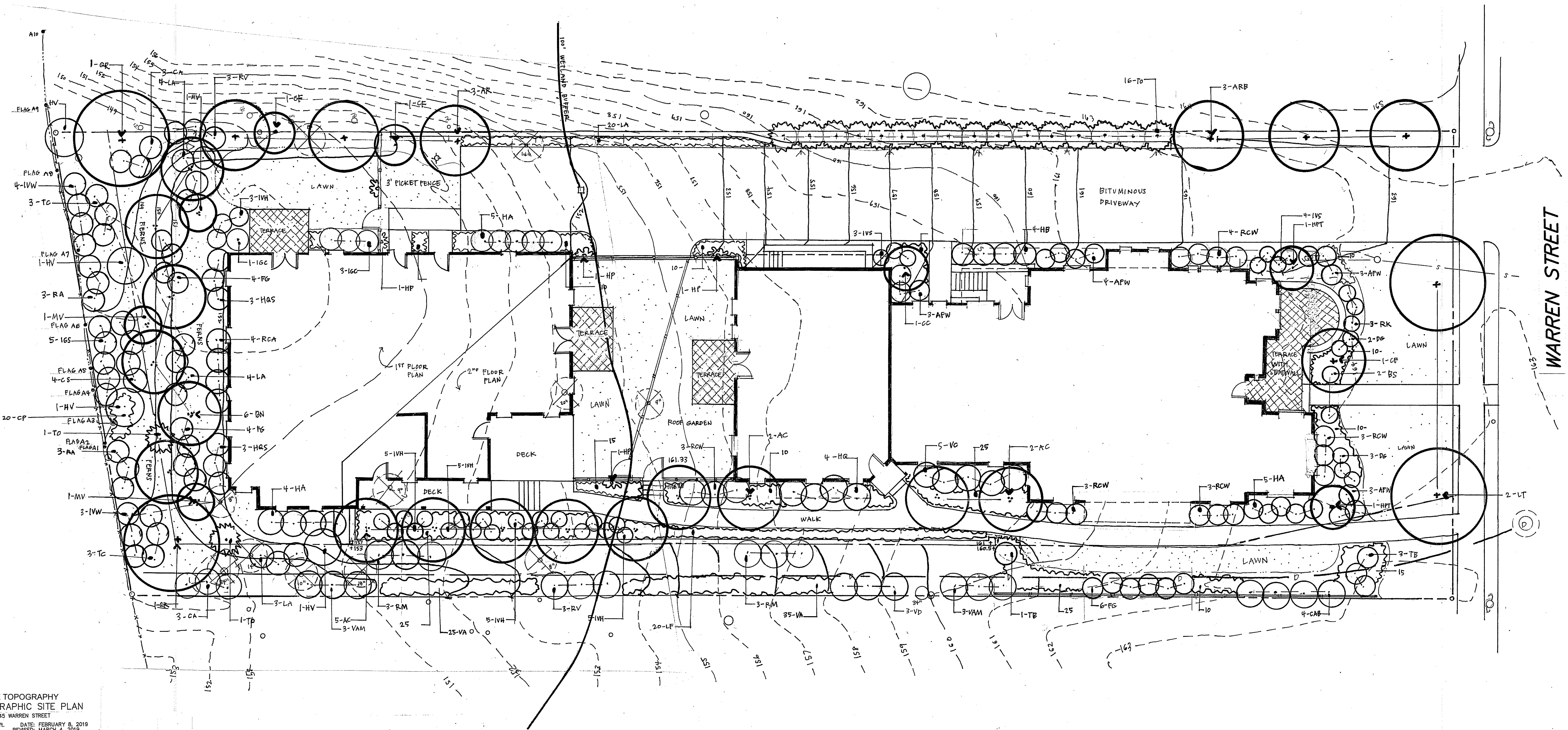


WEST ELEVATION



LONGITUDINAL SECTION

Project	ADDITIONS & ALTERATIONS TO 145 WARREN STREET, NEWTON MA	4-2-19
Owner	145 WARREN ST. LLC	
Architect	SANGIOLo ASSOCIATES ARCHITECTS 9 Skecheconet Way, W. Harwich MA 617 272 5402 www.sangiolo.net	
Drawing	ELEVATION & LONG SECTION	A5

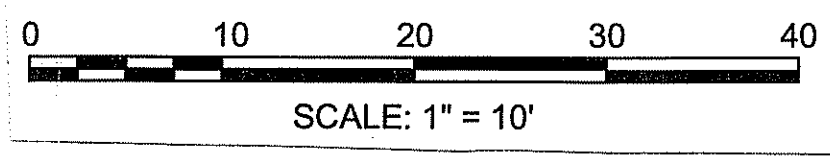
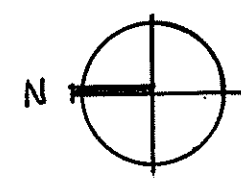


BASE TOPOGRAPHY
 TOPOGRAPHIC SITE PLAN
 145 WARREN STREET
 SCALE: 1/8"=10'
 DATE: FEBRUARY 8, 2019
 REVISED: MARCH 4, 2019
 PROJECT: 217115
VTP
 ASSOCIATES
 INC.
 LAND SURVEYORS - CIVIL ENGINEERS, 132
 ADAMS STREET, 2ND FLOOR, SUITE 3
 NEWTON, MA 02459
 (617) 332-8271

Existing trees to be removed and replaced per City of Newton Tree Ordinance.

10 trees @ 8", 24", 14", 10", 18", 9", 20", 9", 14", 8" caliper
 134 caliper inches to be replaced/required

PROPOSED REPLACEMENT TREES	TOTAL INCHES
16 Canopy trees @ 3" caliper	48"
18 Evergreen trees @ 3" caliper	54"
12 Ornamental trees @ 2.5" caliper	30"
6 Ornamental trees @ 2" caliper	12"
Total caliper inches provided 144"	



Project ADDITIONS & ALTERATIONS TO 145 WARREN STREET, NEWTON MA		Date: 3-26-19
Owner 145 WARREN ST. LLC		
Architect SANGIOLO ASSOCIATES ARCHITECTS 9 Skecheconet Way, W. Harwich MA 617 272 5402 www.sangiolo.net		
Drawing LANDSCAPE PLAN		L1