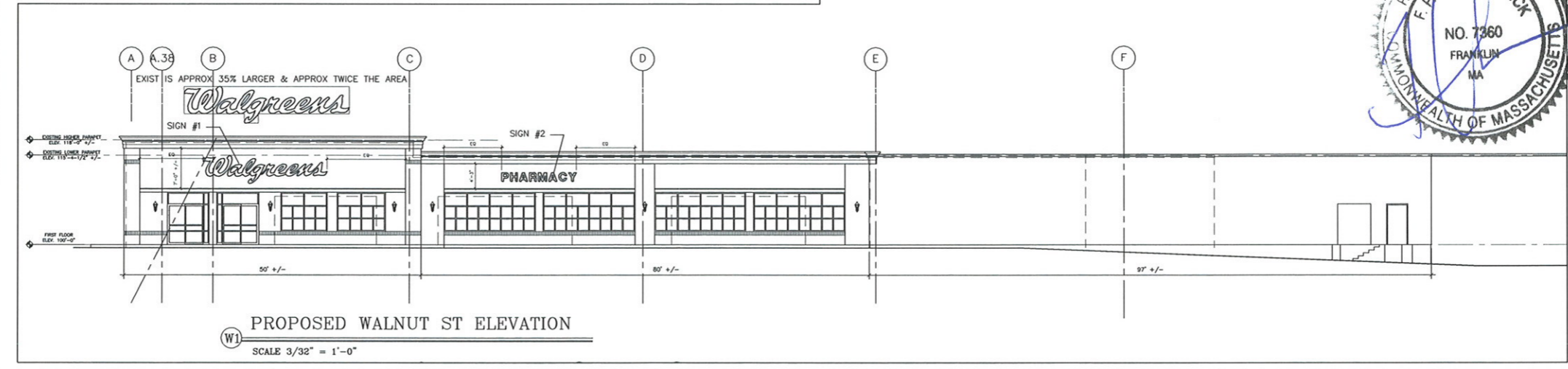


BUILDING SIGNAGE		
	EXISTING	PROPOSED
BEACON ST "Walgreens"	145 +/- SF (28'-2")	76.73 SF (21'-2")
BEACON ST "PHARMACY"	16 SF (12'-0")	11.6 SF (9'-11")
WALNUT ST "Walgreens"	145 +/- SF (28'-2")	76.73 SF (21'-2")
WALNUT ST "PHARMACY"	16 SF (12'-0")	19.1 SF (12'-9")
WALNUT ST "1-HOUR PHOTO"	8 SF (9'-4")	NA
TOTAL BEACON ST:	161 SF	88.33 SF
TOTAL WALNUT ST:	169 SF	95.83 SF



JOB NO.	20120022
DATE	FEBRUARY 24, 2012
DRAWN BY:	FFF contact@hpadesign.com
CHECKED BY:	FFF
PATH	20120022 WAL STORE 20120022 EXISTING
SCALE	SEE DRAWING
REVISION	DATE
155 FOR SIGN REVIEW	4/2/12
156 FOR SITE PLAN REV	4/21/12

HPA Design, Inc.  
ARCHITECTS

- 200 Stonewall Blvd, Suite 6
- Wrentham, MA 02093
- 508.384.8838 (T)
- 508.384.0483 (F)
- contact@hpadesign.com
- www.HPAdesign.com

PLAN, AND ELEVATIONS  
EXIST & PROP SIGNAGE CALCS

PROPOSED ADDITIONS and ALTERATIONS TO:  
**WALGREENS**  
BEACON & WALNUT STREETS NEWTON, MA

These drawings and specifications were prepared for use at the location indicated herein. Publication and use is expressly limited to the identified location. Re-use or reproduction by any method in whole or in part is prohibited without the written permission of HPA Design Co.2

SHEET  
**A1-B** of

JOB NO.  
20120022

IF THESE DWGS ARE NOT 24" X 36" THEY ARE NOT TO SCALE. IF THESE DWGS ARE 12" X 18" THEY ARE HALF SCALE.