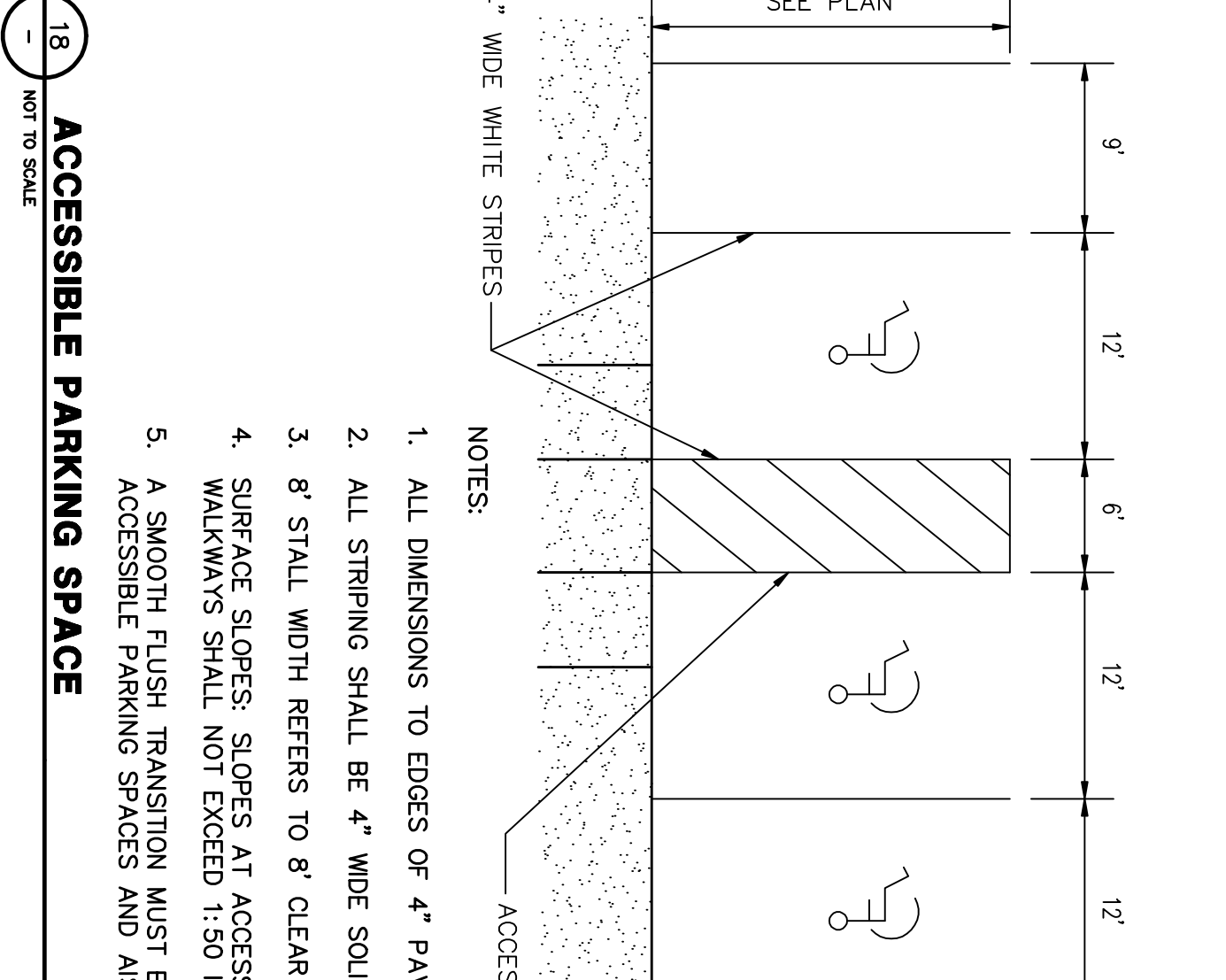
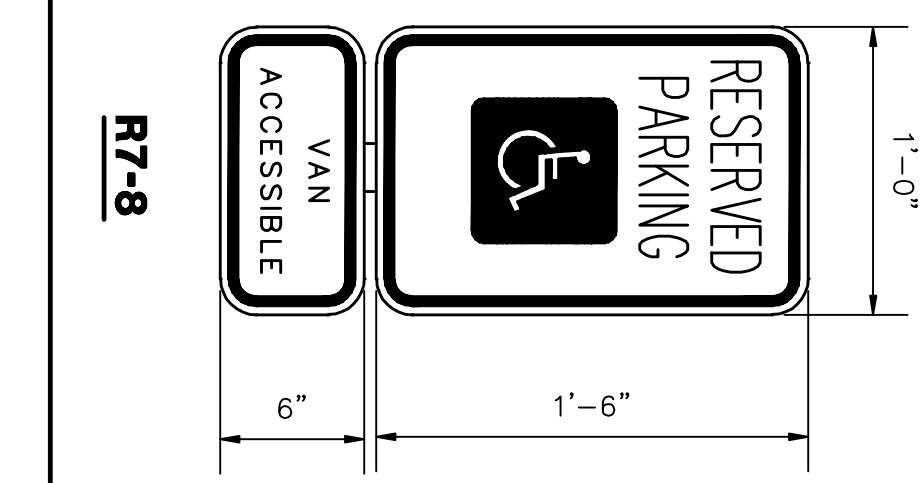
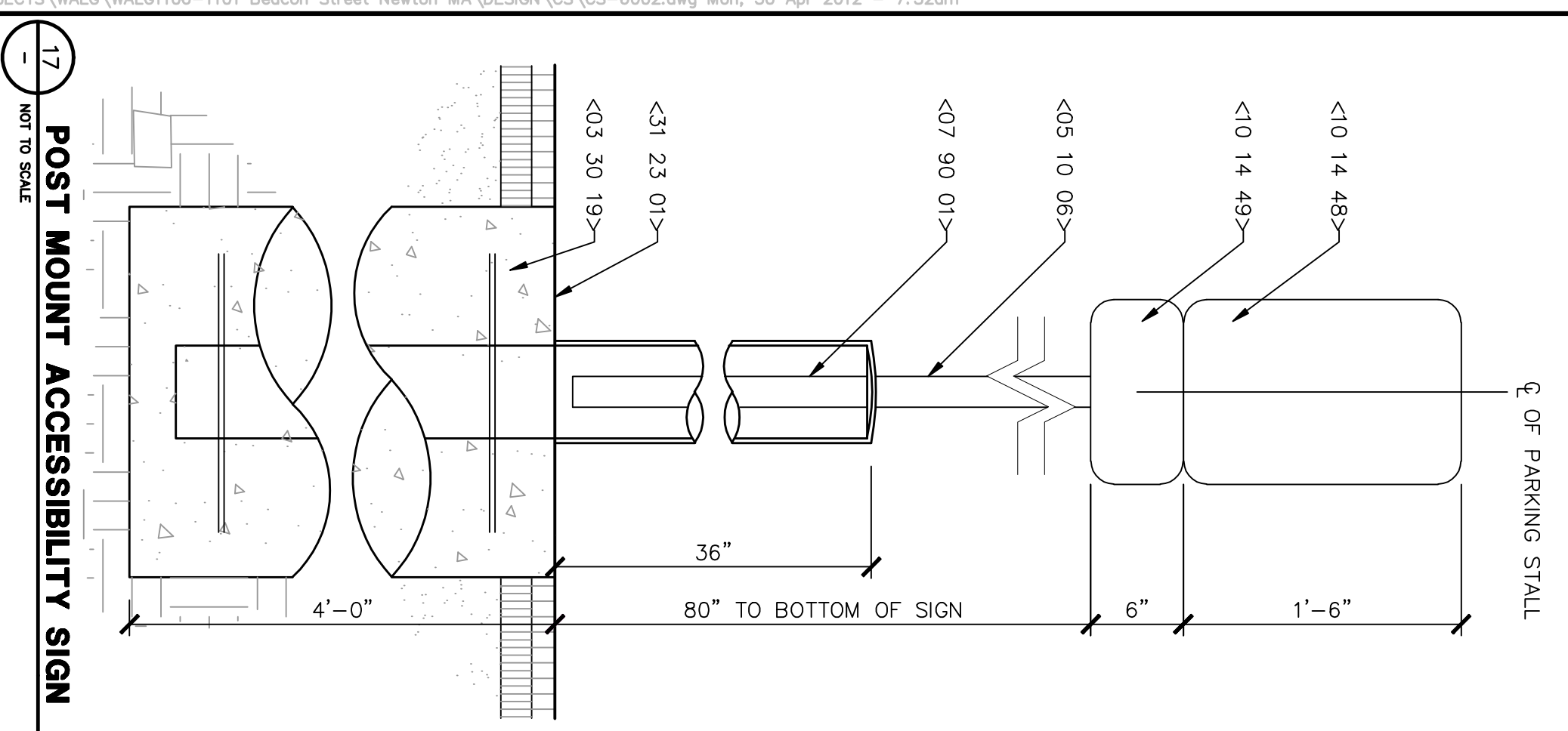
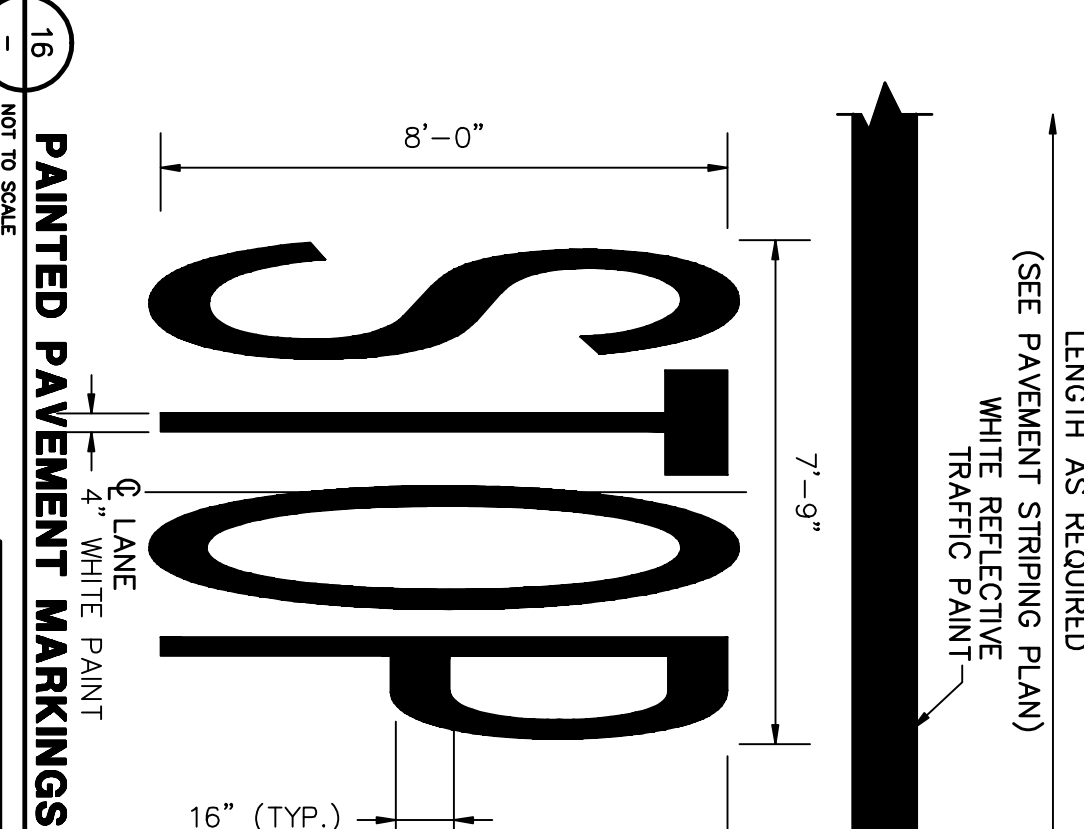
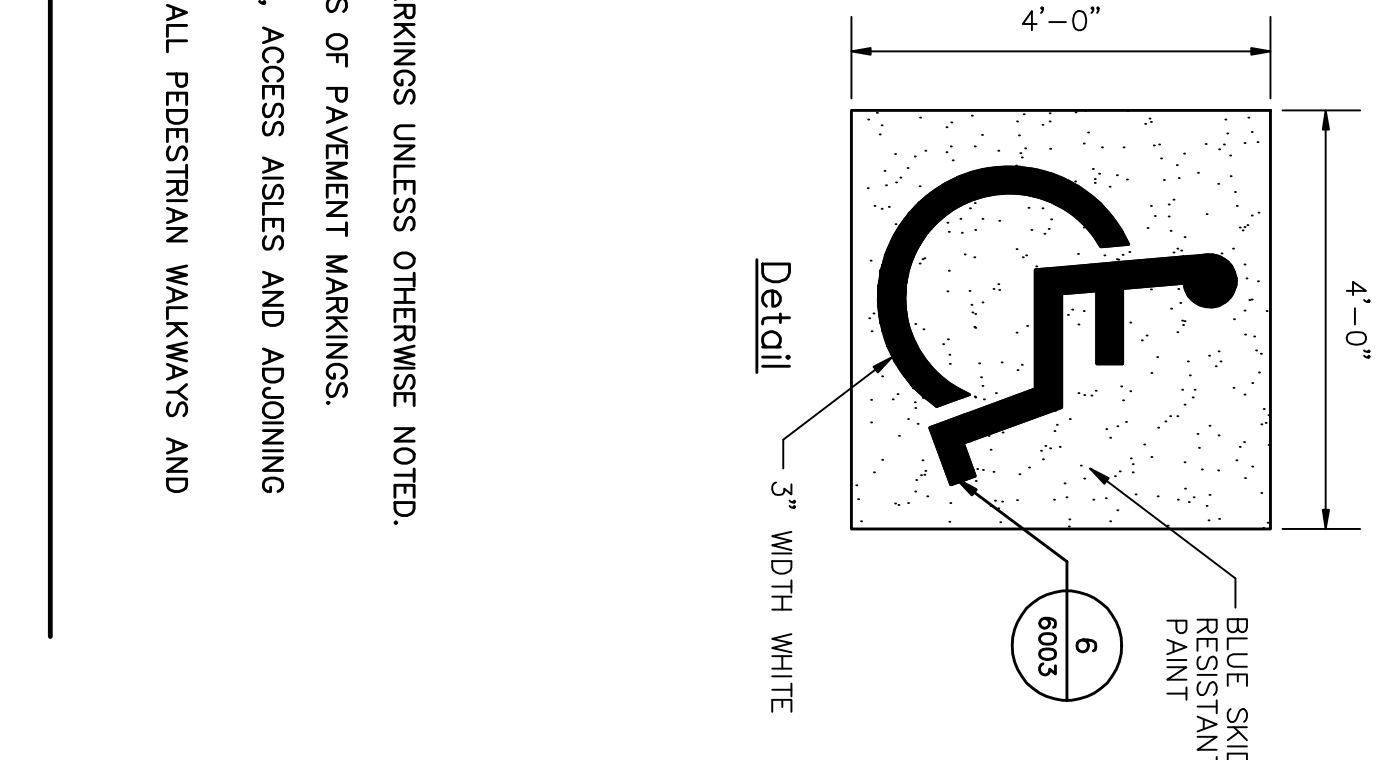
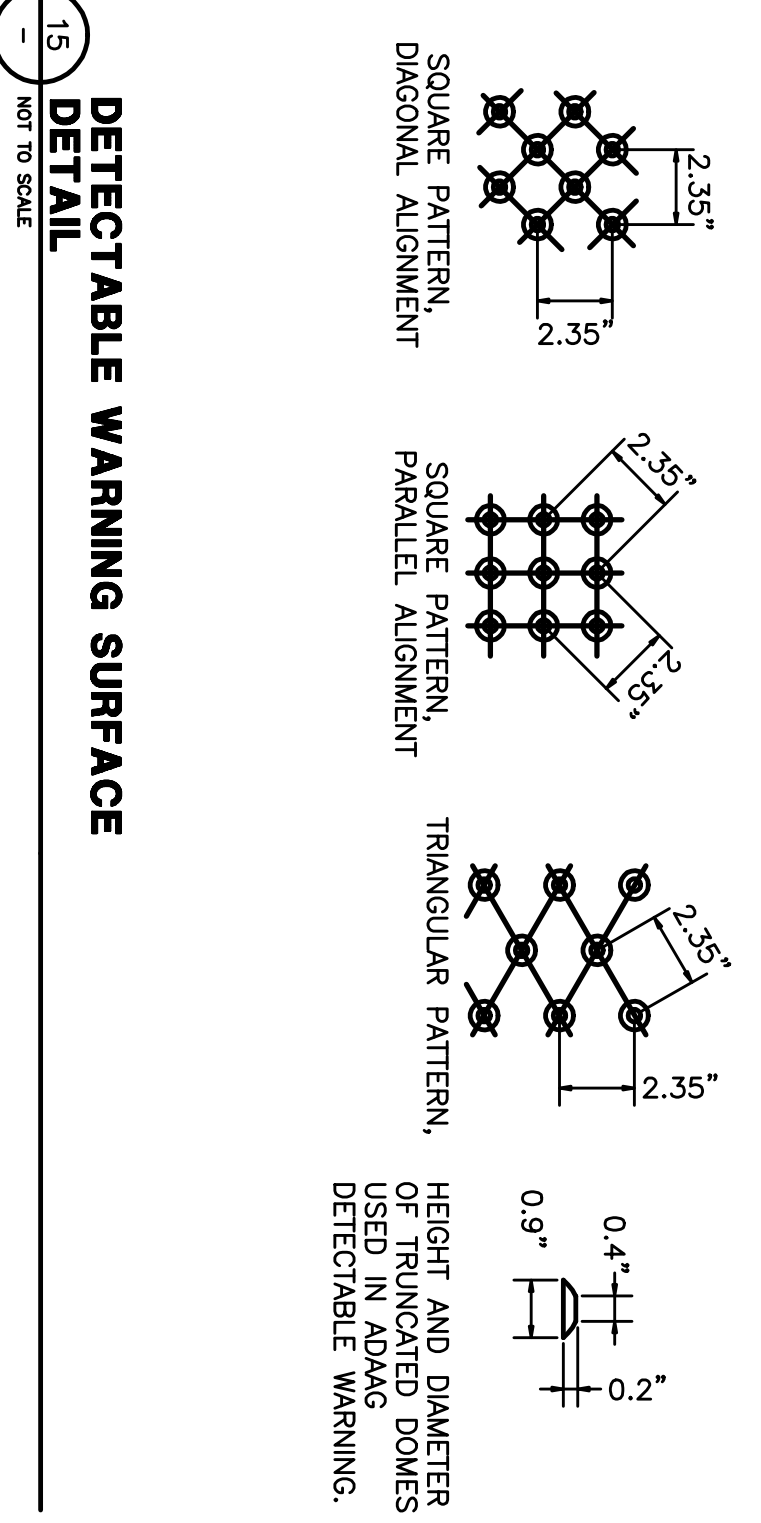


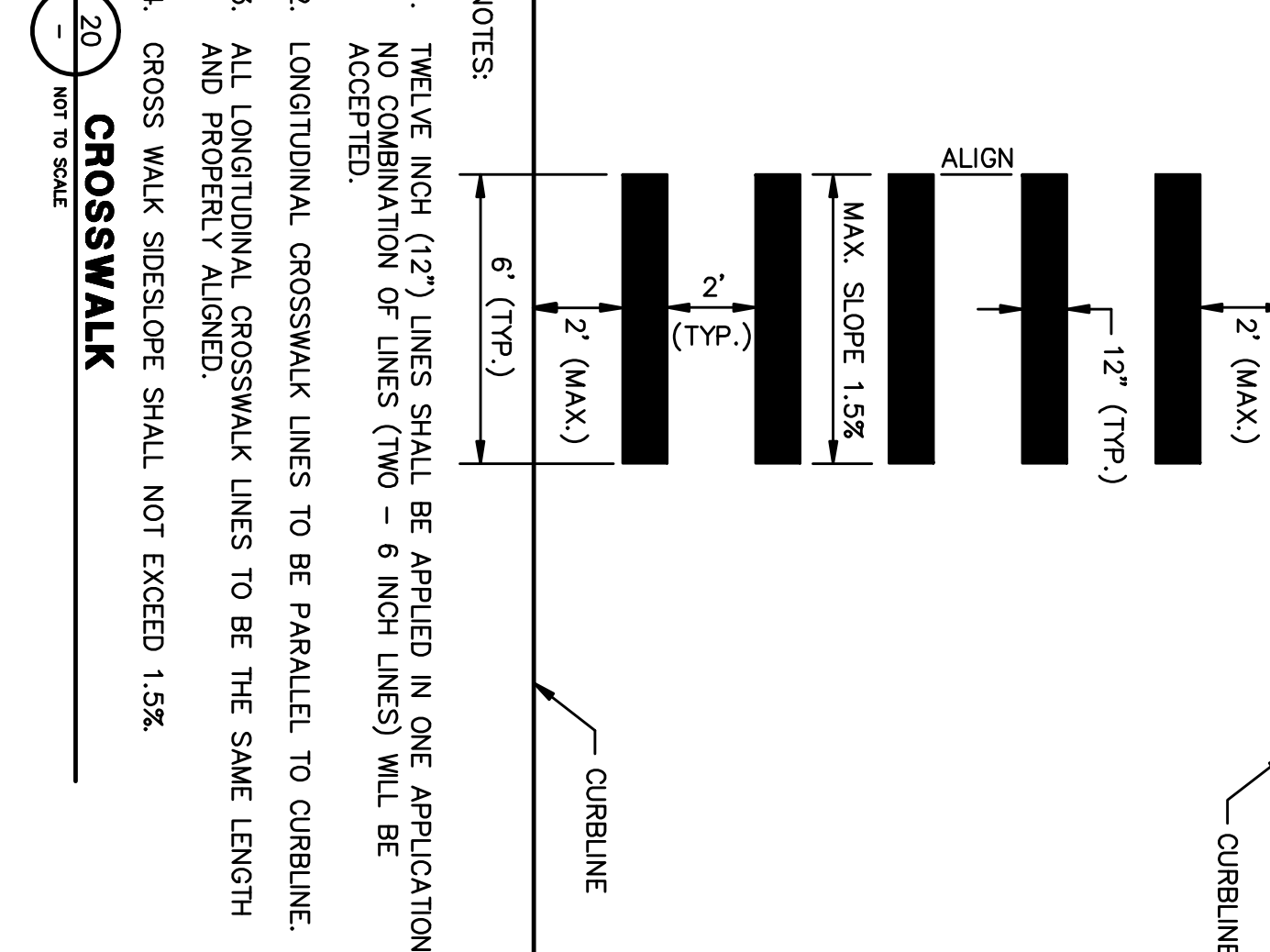
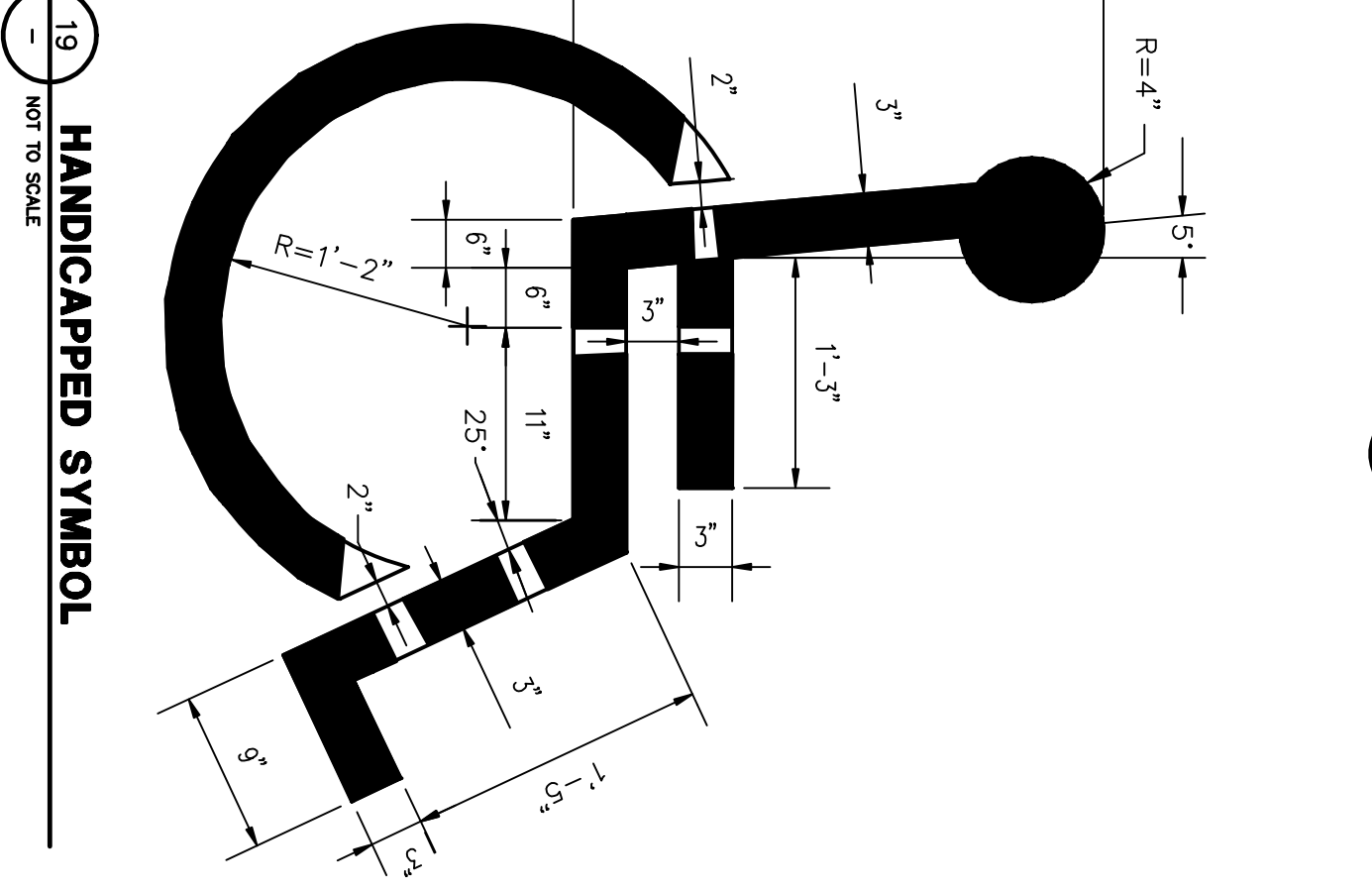
- Notes:
1. THE MAXIMUM ALLOWABLE SIDEWALK AND CURB RAMP CROSS SLOPES SHALL BE 1.5 (1% MIN.).
 2. THE MAXIMUM ALLOWABLE SLOPE OF ACCESSIBLE ROUTE EXCLUDING CURB RAMPS SHALL BE 5%.
 3. THE MAXIMUM ALLOWABLE SLOPE OF ACCESSIBLE ROUTE CURB RAMPS SHALL BE 7.5%.
 4. A MINIMUM OF 3 FEET CLEAR SHALL BE MAINTAINED AT ANY PERMANENT OBSTACLE IN ACCESSIBLE ROUTE (I.E., HYDRANTS, UTILITY POLES, TREE WELLS, SIGNS, ETC.).
 5. CURB TREATMENT VARIES. SEE PLANS FOR CURB TYPE.
 6. RAMP, CURB, AND ADJACENT PAVEMENTS SHALL BE GRADED TO PREVENT PONDING.
 7. SEE TYPICAL SIDEWALK SECTION FOR RAMP CONSTRUCTION.
 8. WHERE ACCESSIBLE ROUTES ARE LESS THAN 5' IN WIDTH (EXCLUDING CURBING) A 5' x 5' PASSING AREA SHALL BE PROVIDED AT INTERVALS NOT TO EXCEED 200 FEET.
 9. ELIMINATE CURBING AT RAMP (OTHER THAN VERTICAL CURBING, WHICH SHALL BE SET FLUSH) WHERE IT ABUTS ROADWAY.



- NOTES:
1. ALL DIMENSIONS TO EDGES OF 4\"/>



- NOTE:
1. ALL PAVEMENT MARKINGS SHALL BE PLACED IN ACCORDANCE WITH THE NATIONAL MANUAL FOR UNIFORM TRAFFIC CONTROL DEVICES AND MA SUPPLEMENTS.



- NOTES:
1. TWELVE INCH (12\") LINES SHALL BE APPLIED IN ONE APPLICATION, NO COMBINATION OF LINES (TWO - 6 INCH LINES) WILL BE ACCEPTED.
 2. LONGITUDINAL CROSSWALK LINES TO BE PARALLEL TO CURBLINE.
 3. ALL LONGITUDINAL CROSSWALK LINES TO BE THE SAME LENGTH AND PROPERLY ALIGNED.
 4. CROSS WALK SIDESLOPE SHALL NOT EXCEED 1.5%.

SCALE	NTS	DRAWING NO.
DRAWN BY	OPH	CS-6002
DATE	4/26/2012	
APPROVED	BOO	

JOB NO.	WALG 1106
SHEET	12 OF 16

ASSESSOR'S MAP 64 BLOCK 3 LOTS 10, 11 & 12
 1101 BEACON STREET
 NEWTON, MA

SITE DETAILS

PREPARED FOR:
WALGREEN'S REAL ESTATE
 106 MILMOT ROAD
 DEERFIELD, IL 60015-5105

ALL DIMENSIONS MUST BE VERIFIED BY THE CONTRACTOR AND OWNER IMMEDIATELY UPON NOTIFICATION OF ANY DISCREPANCIES BEFORE PROCEEDING WITH THE WORK

DATE	NO.	REVISIONS	BY

