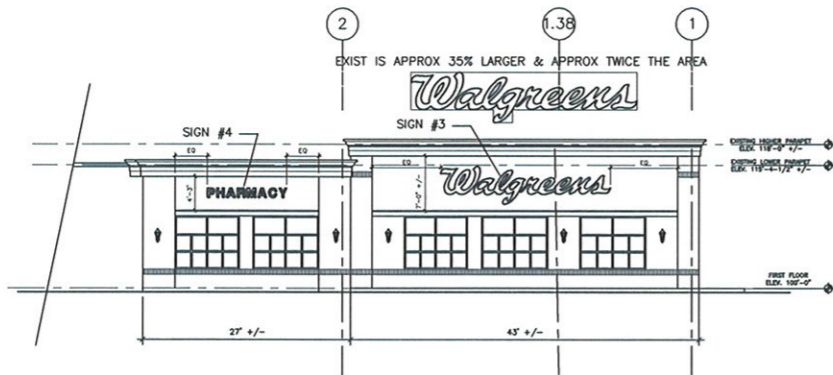
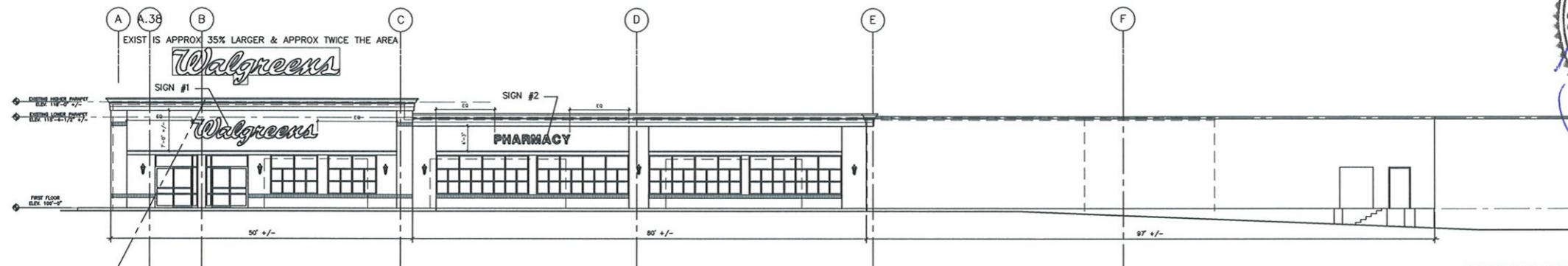


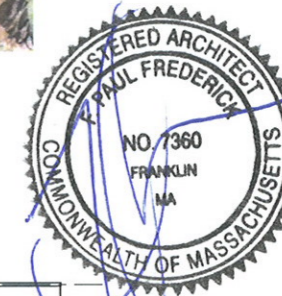
A PROPOSED FIRST FLOOR PLAN



C BEACON STREET ELEVATION



B WALNUT STREET ELEVATION



IF THESE DWGS ARE NOT 24" X 36" THEY ARE NOT TO SCALE. IF THESE DWGS ARE 12" X 18" THEY ARE HALF SCALE.

JOB NO.	20120022
DATE	FEBRUARY 24, 2012
DRAWN BY:	FFF contact@hpadesign.com
CHECKED BY:	FFF
PATH	20120022 WAL STORE 02330 20120022 EXISTING
SCALE	SEE DRAWING
REVISION	DATE
155 FOR SIGN REVIEW	4/2/12
155 FOR SITE PLAN REV	4/21/12

HPA Design, Inc.
ARCHITECTS

- 200 Stonewall Blvd, Suite 6
- Wrentham, MA 02093
- 508.384.8838 (T)
- 508.384.0483 (F)
- contact@hpadesign.com
- www.HPAdesign.com

PLAN, ELEVATIONS & RENDERING

PROPOSED ADDITIONS and RENOVATIONS TO:
WALGREENS
BEACON & WALNUT STREETS NEWTON, MA

These drawings and specifications were prepared for use at the location indicated herein. Publication and use is expressly limited to the identified location. Re-use or reproduction by any method, in whole or in part, is prohibited without the written permission of HPA Design, ©2012

SHEET
A1-A of

JOB NO.
20120022