

7 JAN 2016  
REV 20 DEC 2015

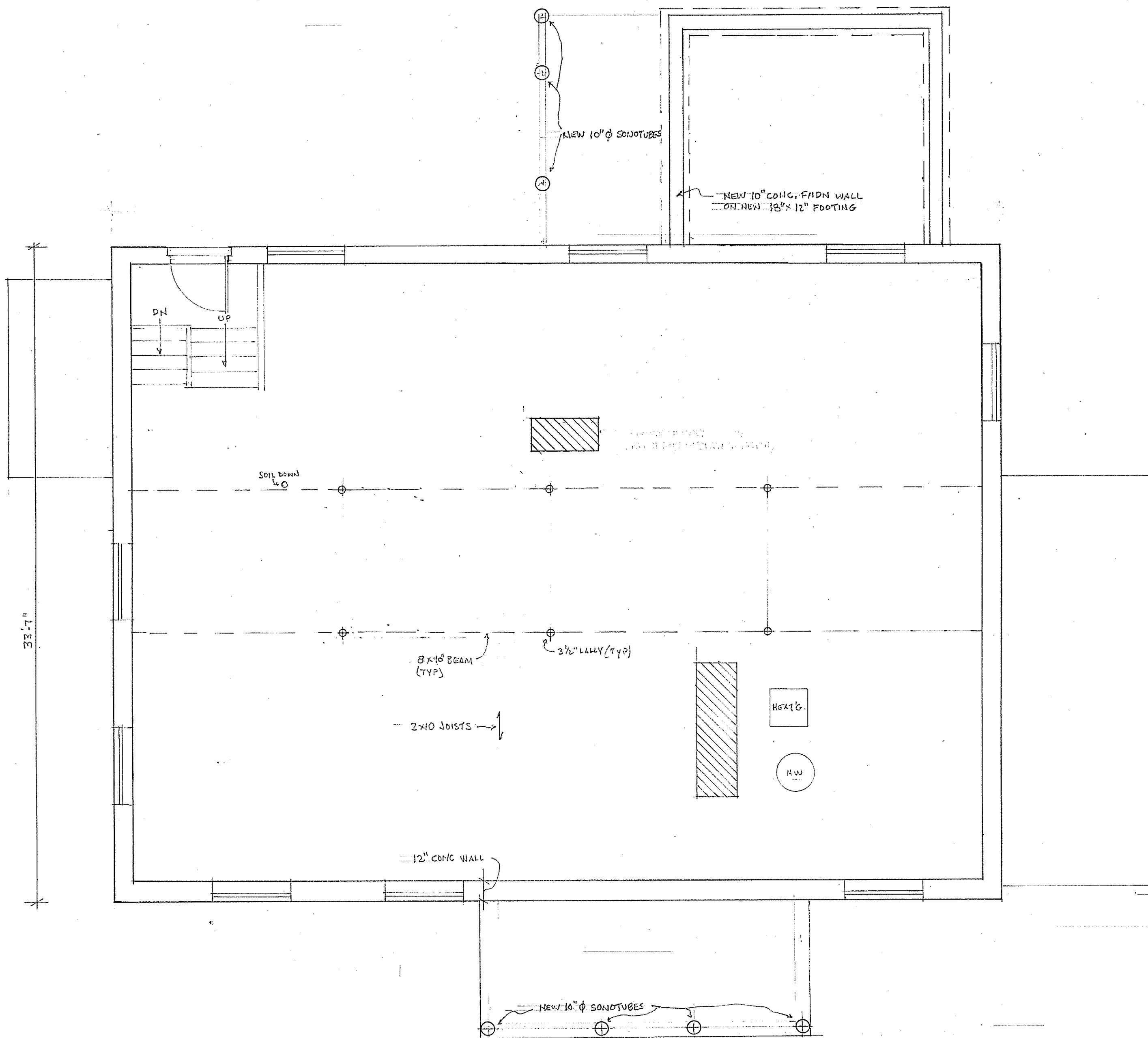
DATE 4 DEC 2015 SCALE 1/8"=1'-0"

PROJECT ALTERATIONS TO THE  
**BOLANIS RESIDENCE**  
17-19 PULSIFER STREET, NEWTON, MA.

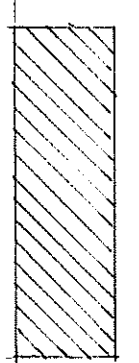
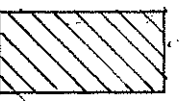
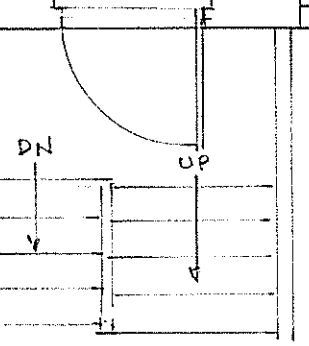
TITLE **SITE PLAN**

STEPHEN P. HAMILTON, ARCHITECT  
155 SUMNER STREET  
NEWTON, MA. 02459  
(617) 969-5752

**AA**



33'-7"



HEAT

H.W.

12" CONC WALL

NEW 10" Ø SONOTUBES

NEW 10" Ø SONOTUBES

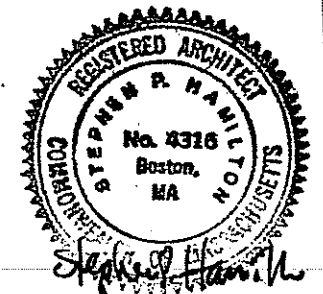
NEW 10" CONC. FNDN WALL  
ON NEW 18" X 12" FOOTING

SOIL BOUND

8 X 10 BEAM (TYP)

2 1/2" LALLY (TYP)

2 X 10 JOISTS



7 JAN 2016  
REV 4 DEC 2015

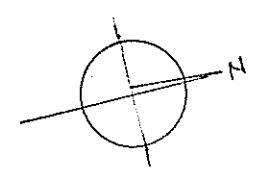
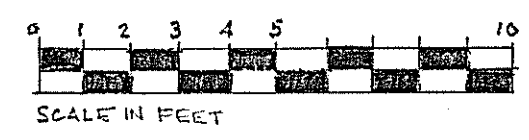
DATE 2 JULY 2015 SCALE 1/4"=1'-0"

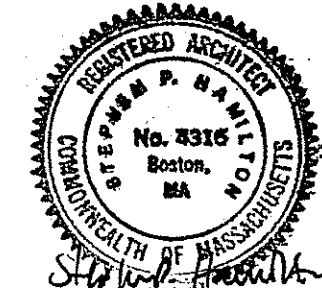
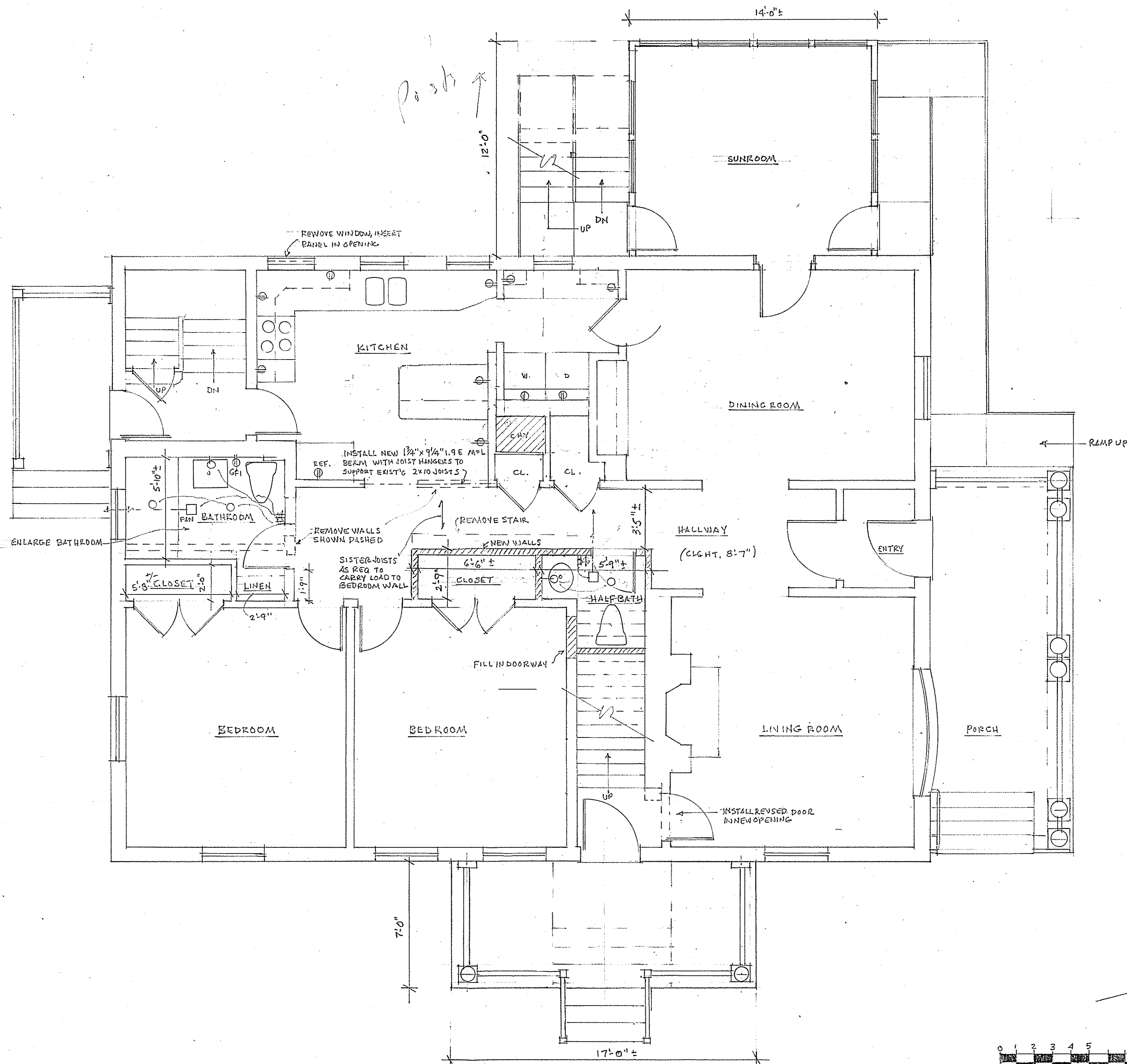
PROJECT ALTERATIONS TO THE  
**BOLANIS RESIDENCE**  
17-19 PULSIFER STREET, NEWTON, MA.

TITLE  
**GROUND FLOOR PLAN**

STEPHEN P. HAMILTON, ARCHITECT  
155 SUMNER STREET  
NEWTON, MA. 02459  
(617) 969-5752

**A1**





7 JAN 2016  
 4 DEC 2015  
 REV 27 JULY 2015

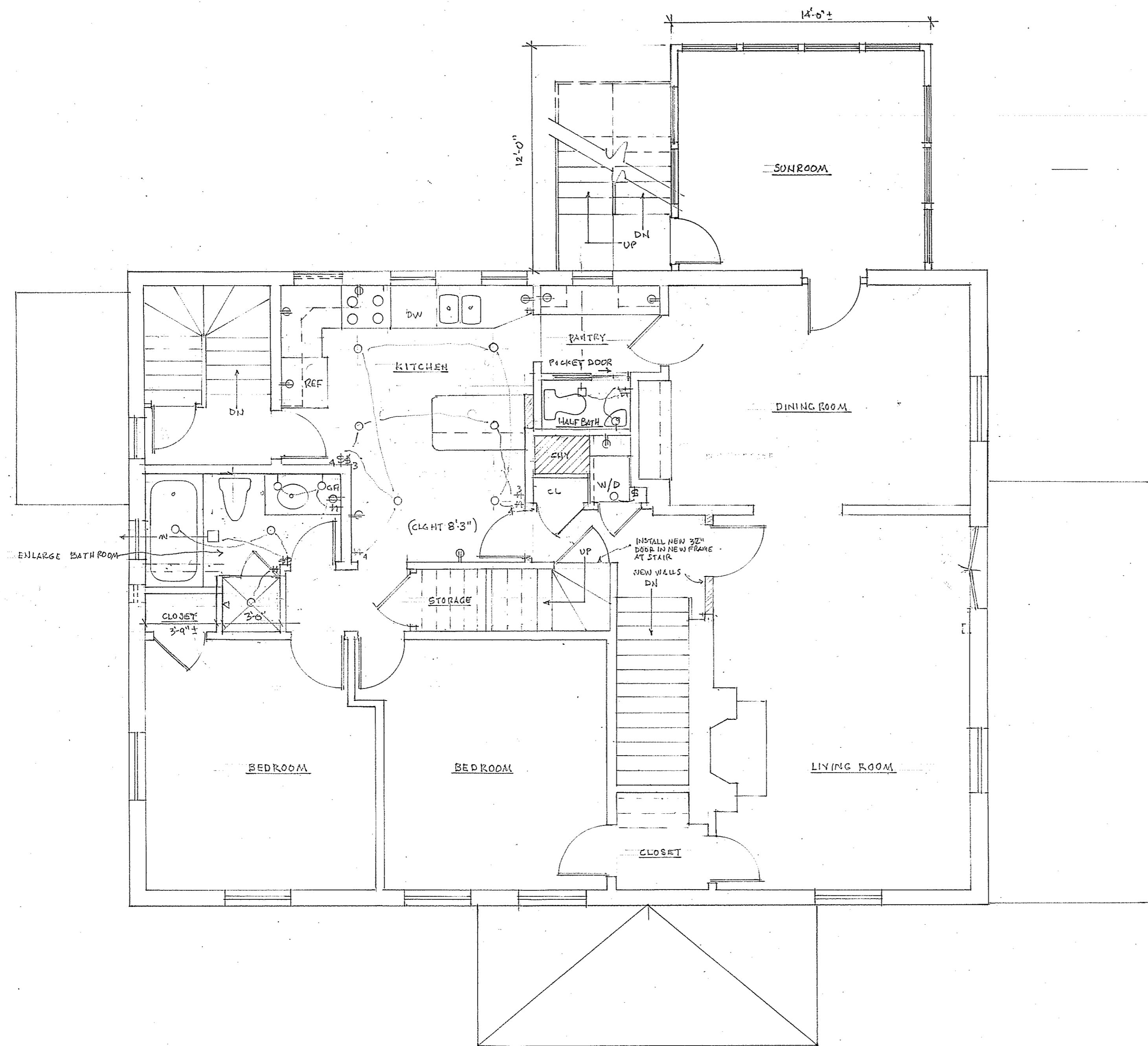
DATE 2 JULY 2015 SCALE 1/4"=1'-0"

PROJECT ALTERATIONS TO THE  
**BOLANIS RESIDENCE**  
 17-19 PULSIFER STREET, NEWTON, MA.

TITLE  
**FIRST FLOOR PLAN**

STEPHEN P. HAMILTON, ARCHITECT  
 155 SUMNER STREET  
 NEWTON, MA. 02459  
 (617) 969-5752

**A2**



7 JAN 2016  
 4 DEC 2015  
 REV 27 JULY 2015

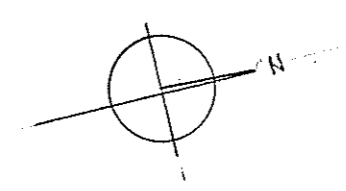
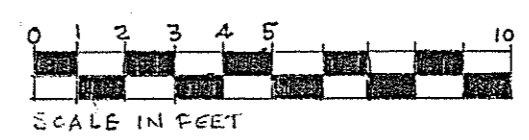
DATE 2 JULY 2015 SCALE 1/4"=1'-0"

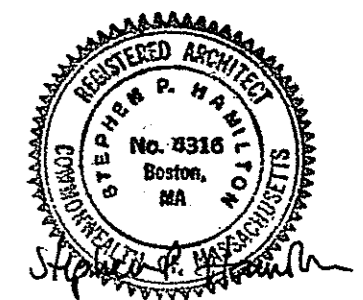
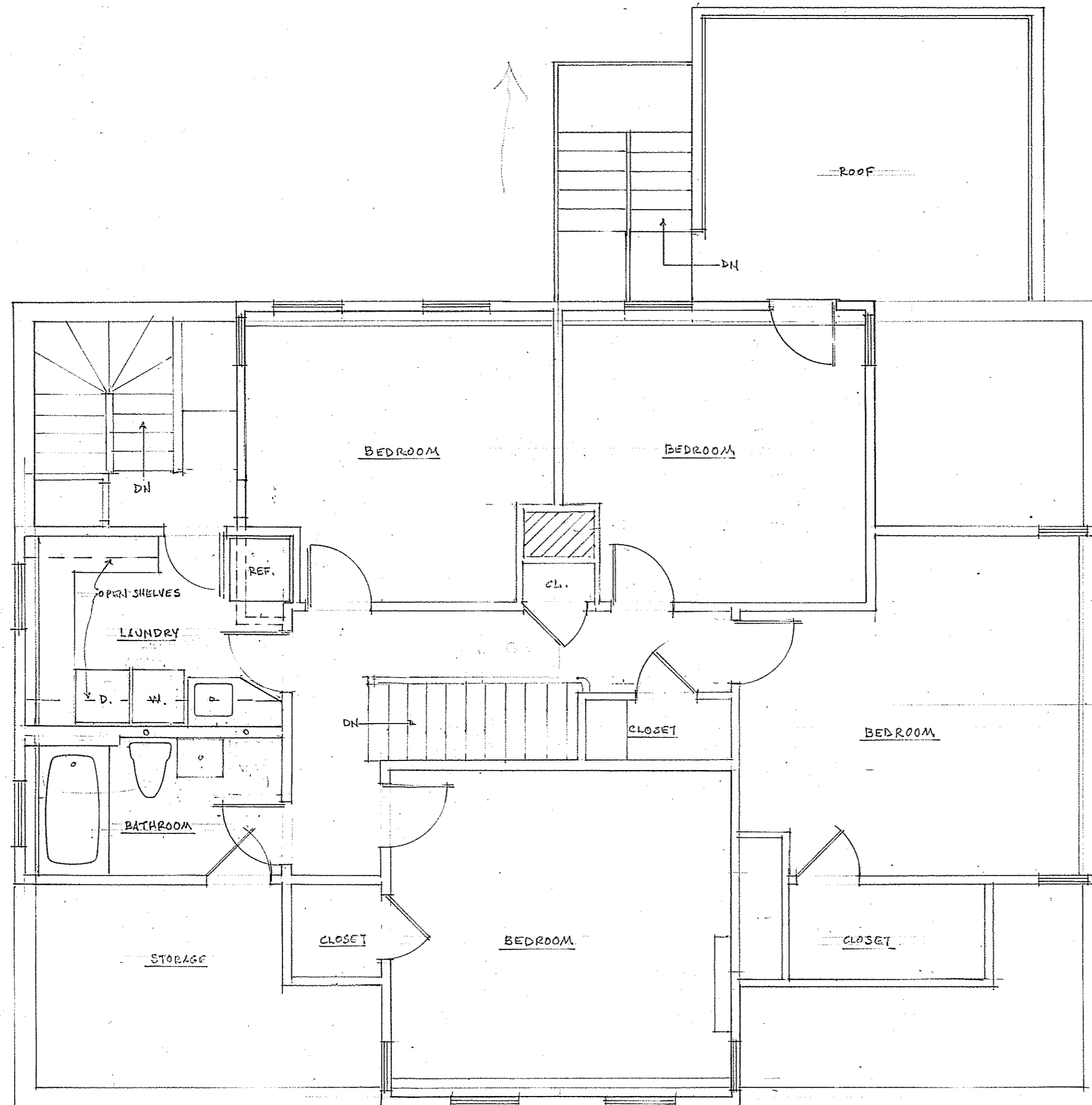
PROJECT ALTERATIONS TO THE  
**BOLANIS RESIDENCE**  
 17-19 PULSIFER STREET, NEWTON, MA.

TITLE **SECOND FLOOR PLAN**

STEPHEN P. HAMILTON, ARCHITECT  
 155 SUMNER STREET  
 NEWTON, MA. 02459  
 (617) 969-5752

**A3**





7 JAN 2016  
 20 DEC 2015  
 REV 4 DEC 2015

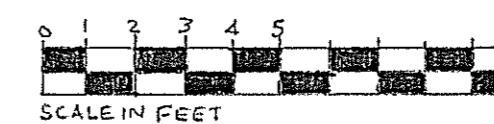
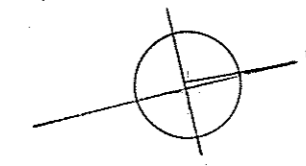
DATE 2 JULY 2015 SCALE 1/4"=1'-0"

PROJECT ALTERATIONS TO THE  
**BOLANIS RESIDENCE**  
 17-19 PULSIFER STREET, NEWTON, MA.

TITLE  
**ATTIC FLOOR PLAN**

STEPHEN P. HAMILTON, ARCHITECT  
 155 SUMNER STREET  
 NEWTON, MA. 02459  
 (617) 969-5752

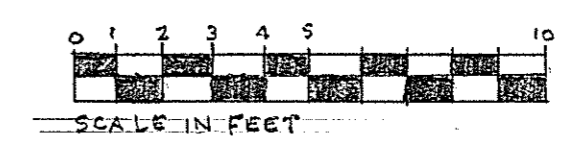
**A4**





EAST ELEVATION

NEW FRONT PORCH



DATE 7 JAN 2016 SCALE 1/4"=1'-0"

---

PROJECT ALTERATIONS TO THE  
**BOLANIS RESIDENCE**  
 17-19 PULSIFER STREET, NEWTON, MA.

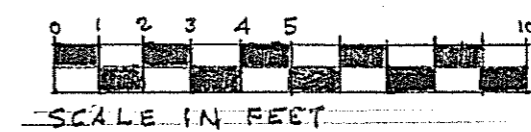
---

TITLE  
**ELEVATIONS**

---

STEPHEN P. HAMILTON, ARCHITECT  
 155 SUMNER STREET  
 NEWTON, MA. 02459  
 (617) 969-5752

**A5**



DATE 7 JAN 2016 SCALE 1/4"=1'-0"

PROJECT ALTERATIONS TO THE  
**BOLANIS RESIDENCE**  
 17-19 PULSIFER STREET, NEWTON, MA.

TITLE  
**ELEVATIONS**

STEPHEN P. HAMILTON, ARCHITECT  
 155 SUMNER STREET  
 NEWTON, MA. 02459  
 (617) 969-5752

**A6**



WEST ELEVATION

NEW RAMP

NEW SUNROOMS

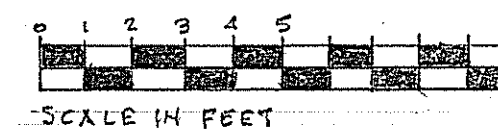
NEW STAIRS

DATE 7 JAN 2016 SCALE 1/4"=1'-0"

PROJECT ALTERATIONS TO THE  
**BOLANIS RESIDENCE**  
 17-19 PULSIFER STREET, NEWTON, MA.

TITLE  
**ELEVATIONS**

STEPHEN P. HAMILTON, ARCHITECT  
 155 SUMNER STREET  
 NEWTON, MA. 02459  
 (617) 969-5752



SCALE IN FEET

**A7**

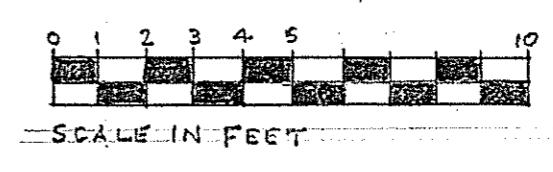




DATE 7 JAN 2016 SCALE 1/4"=1'-0"

PROJECT ALTERATIONS TO THE  
**BOLANIS RESIDENCE**  
 17-19 PULSIFER STREET, NEWTON, MA.

TITLE  
**ELEVATIONS**



STEPHEN P. HAMILTON, ARCHITECT  
 155 SUMNER STREET  
 NEWTON, MA. 02459  
 (617) 969-5752

**A8**