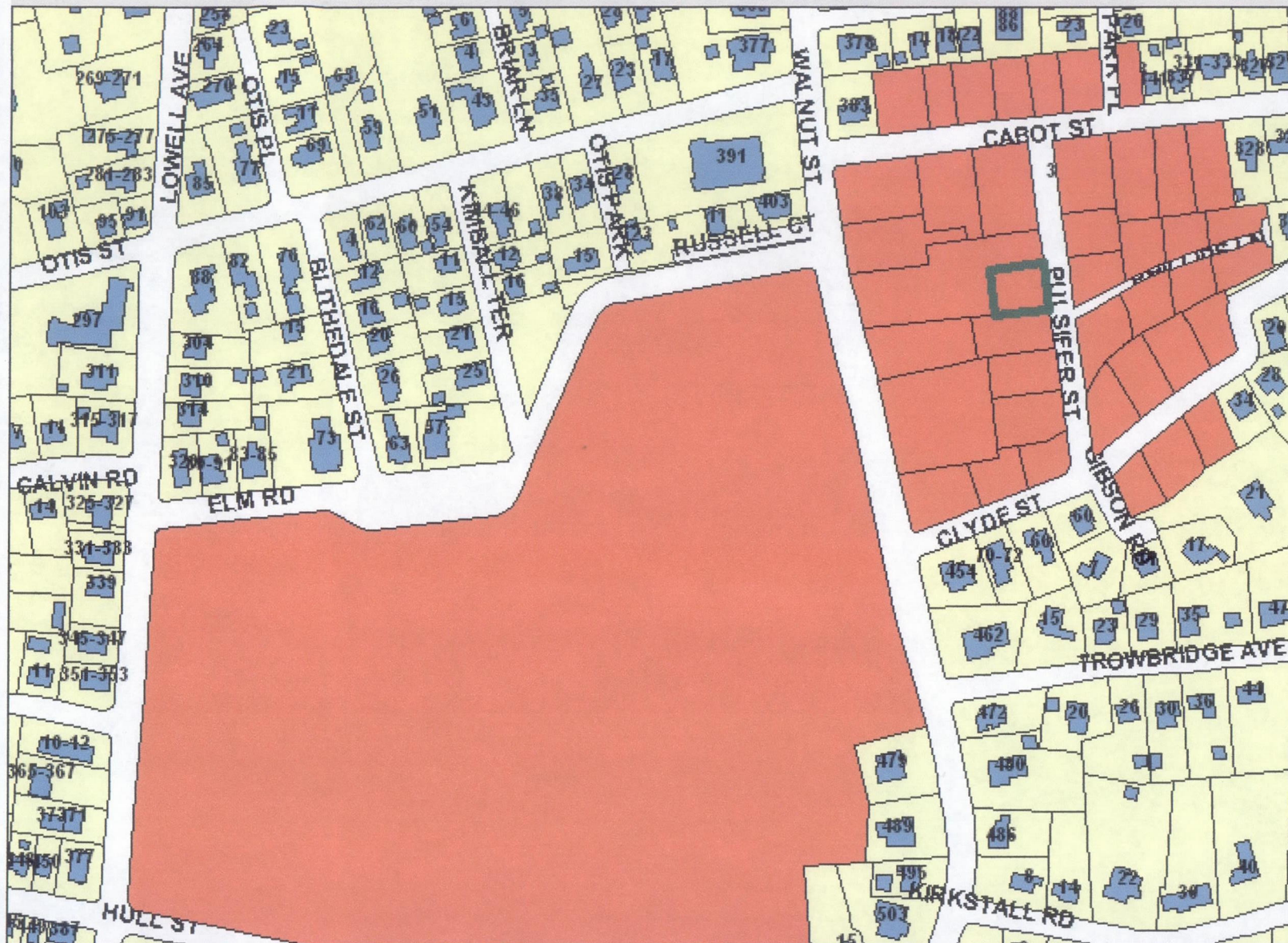


# NEWTON GIS DATA



The information on this map is from the Newton Geographic Information System (GIS). The City of Newton cannot guarantee the accuracy of this information. Each user is responsible for determining the data's suitability for its intended purpose.

City departments will not approve applications based solely on GIS data. City staff correct errors as they are identified.

-  Buildings
-  Property Lines
-  Lakes & Rivers
-  Easements

Property Location:

17-19 PULSIFER ST

Property ID:

22018 0003

Land Use: Lot Size:

105

7694 Sq. Ft.



1 inch = Approximately 283 Feet

MAP DATE: June 27, 2016