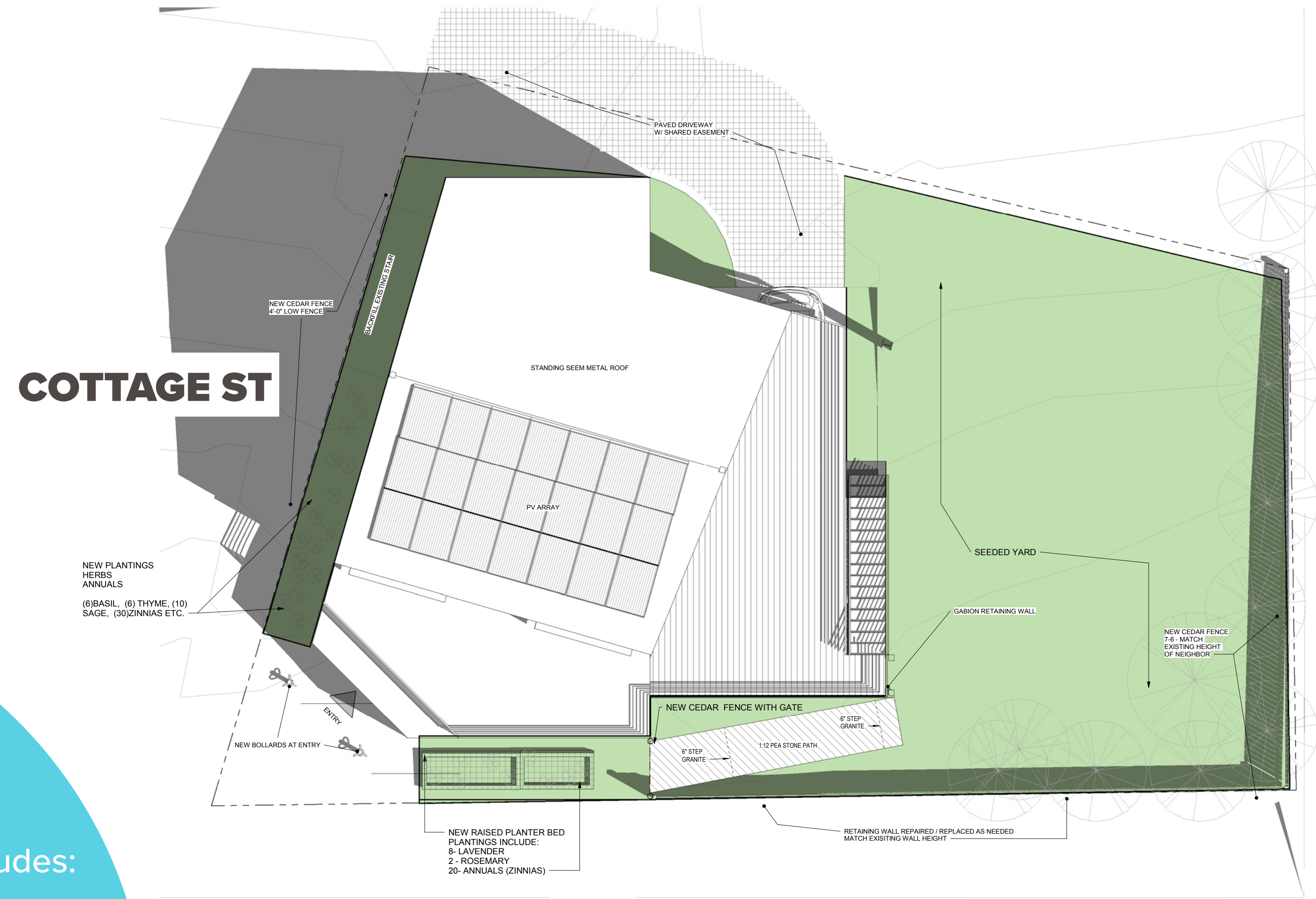


# 203 Elliot Street • "Lil Elliot" • A Placetaylor design



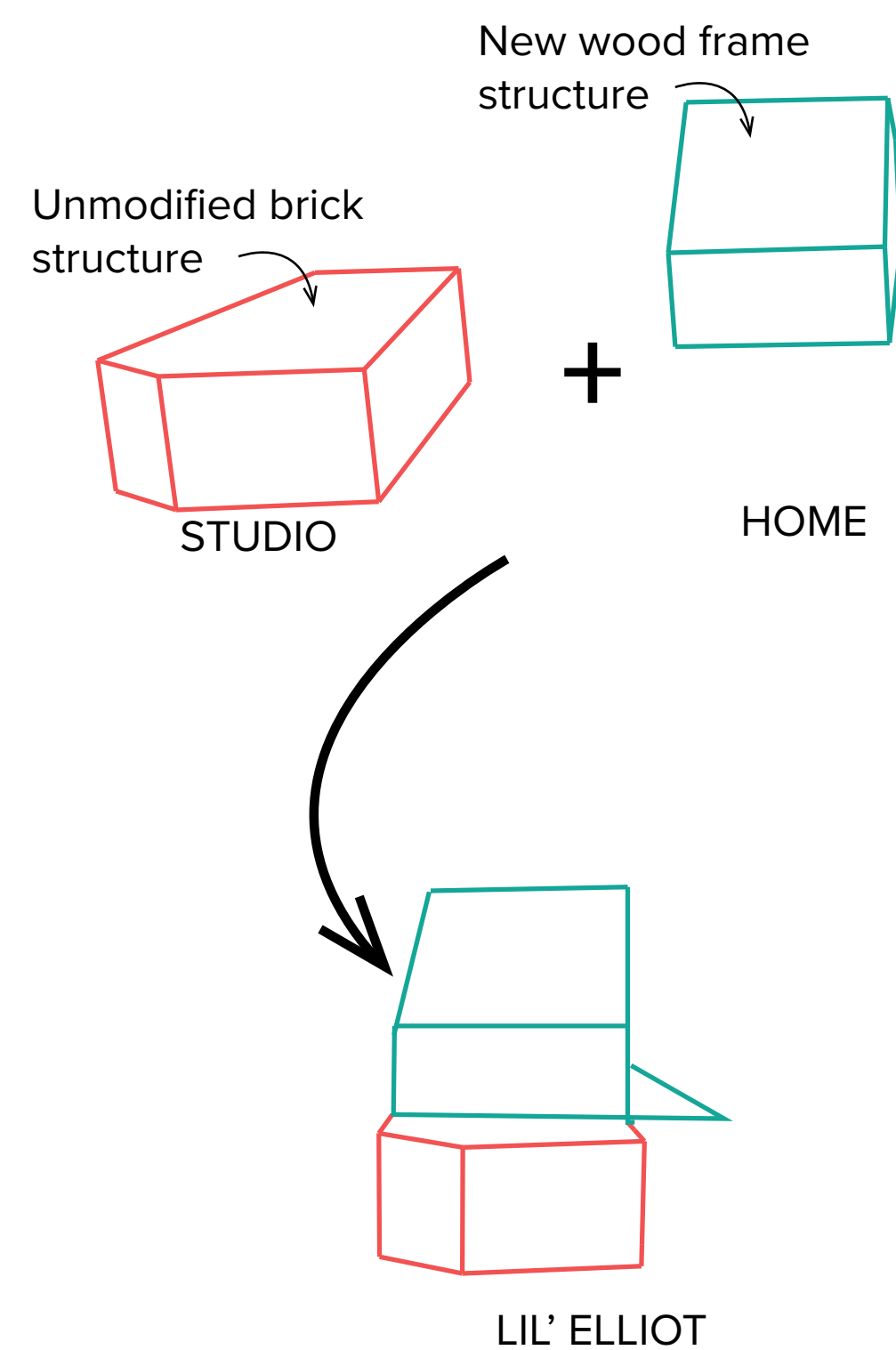
## PROJECT DESCRIPTION

Proposed structure: 2.5 story building. Includes:

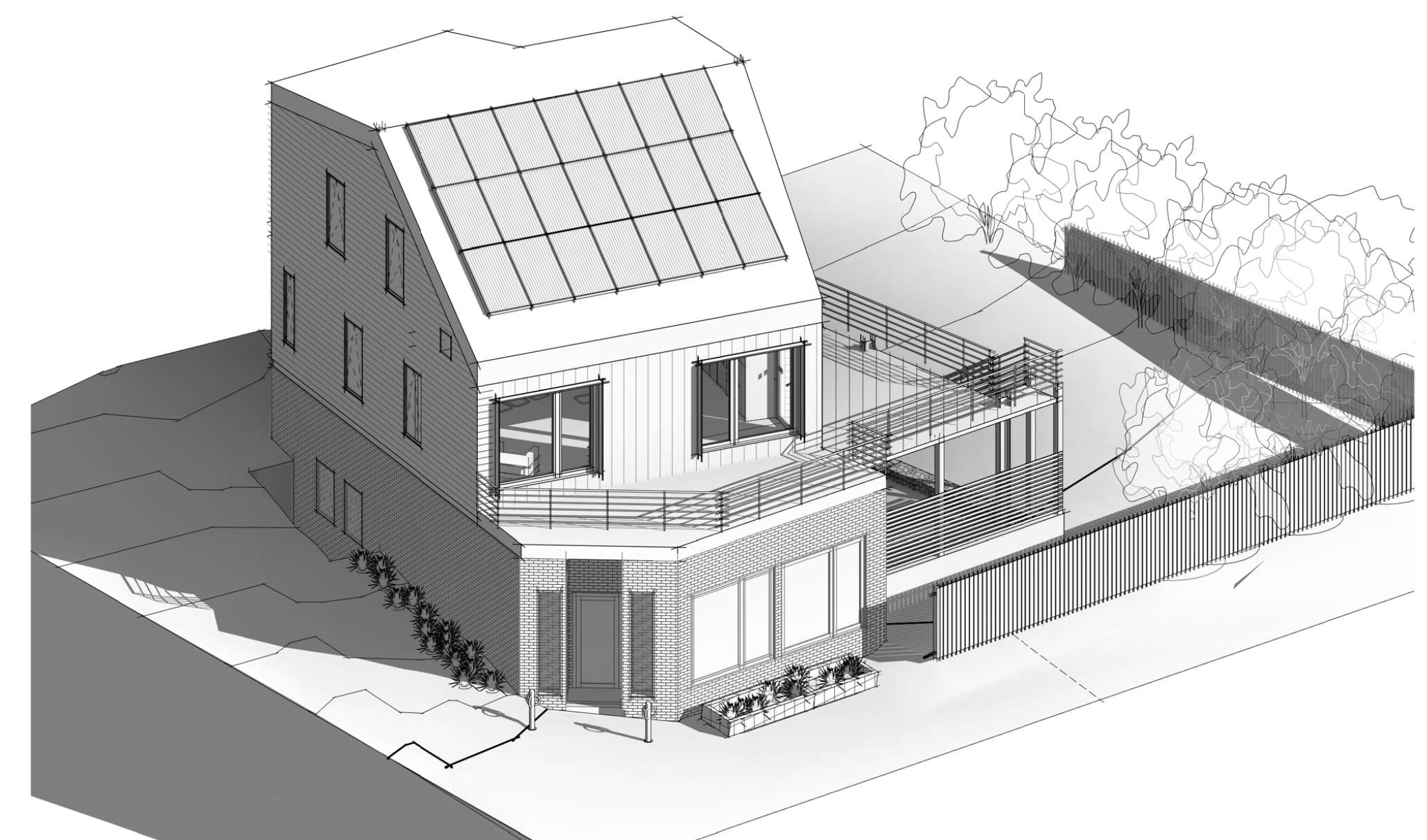
- 1-story existing structure
- 1.5 story addition built above the existing structure
- The existing first floor will be converted into a private art studio.

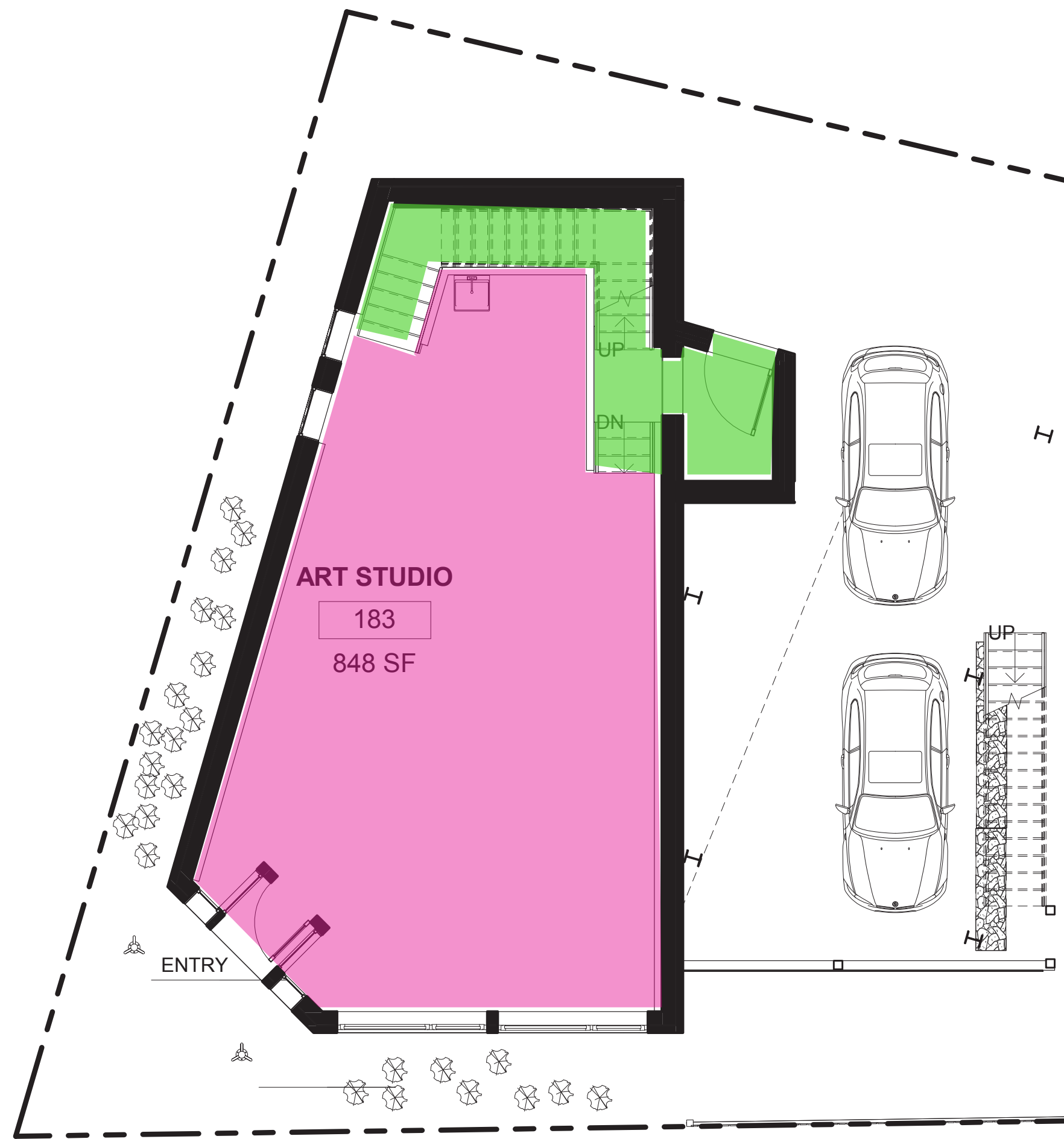
### The addition will include:

- Open living, dining and kitchen area
- Two bedrooms on the top (.5) floor
- 1.5 bathrooms
- There will be two 9'x19' parking spaces behind the house.
- The building is design to passive house standards, to achieve a net-zero/net-positive goal.

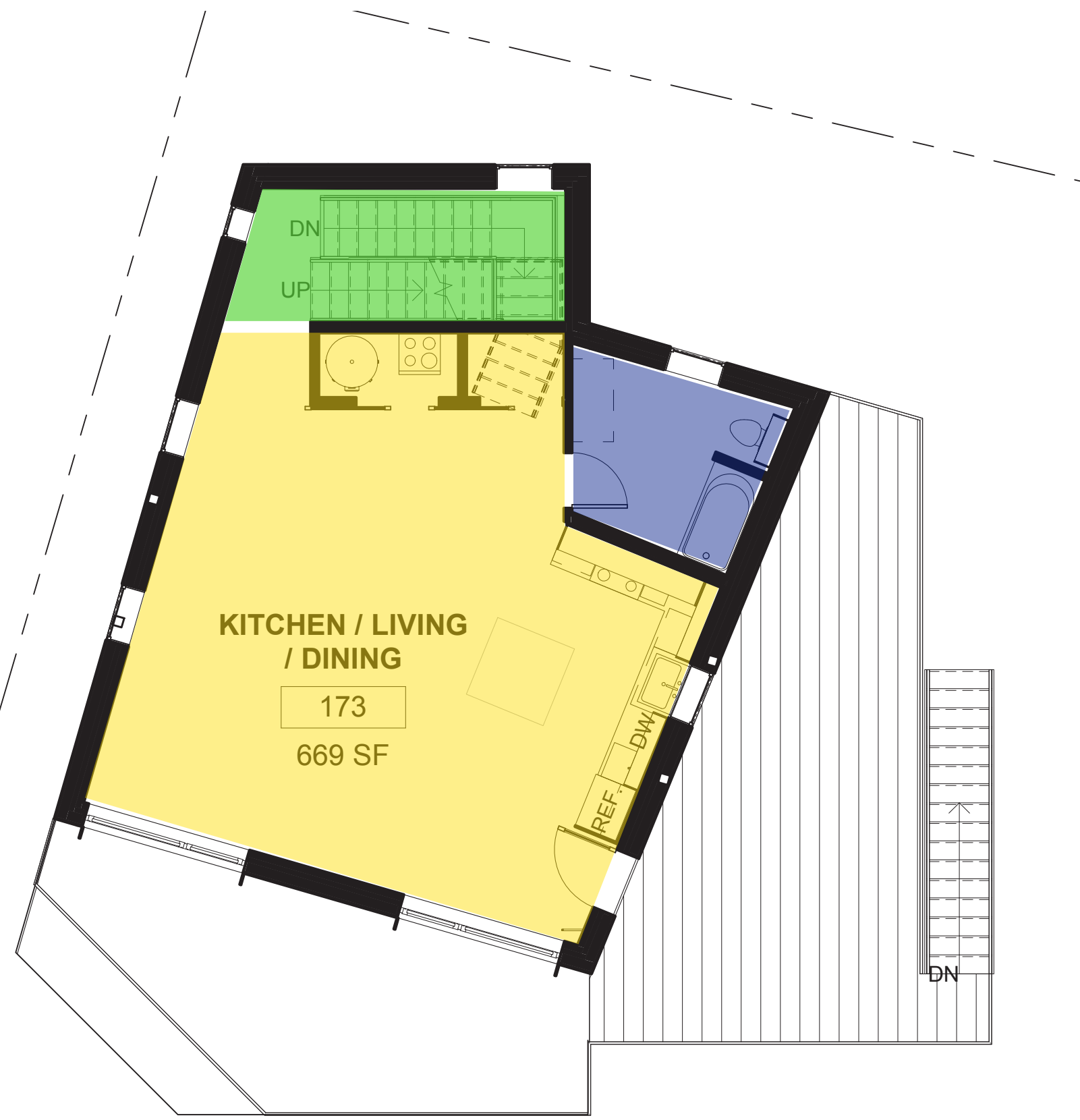


## ELLIOT ST

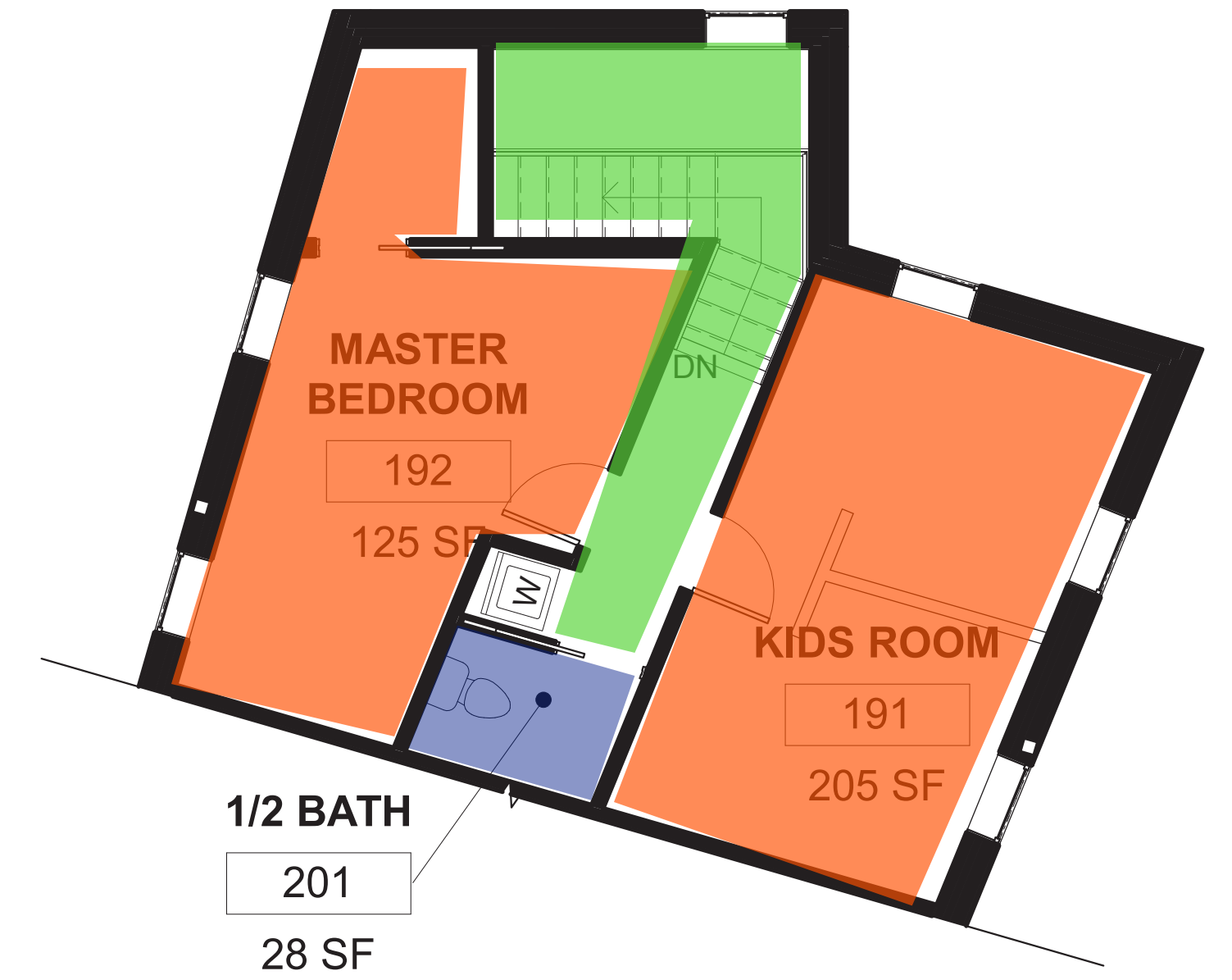




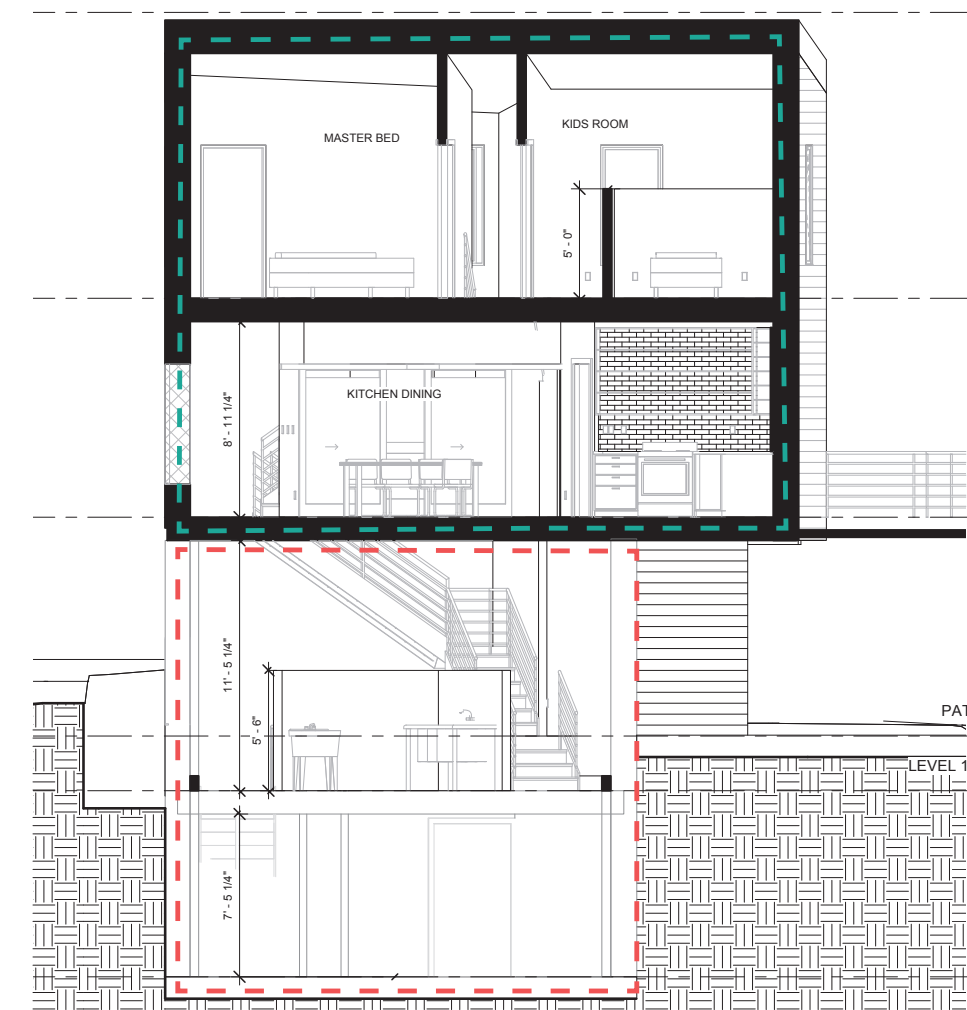
**1 STUDIO + PARKING**



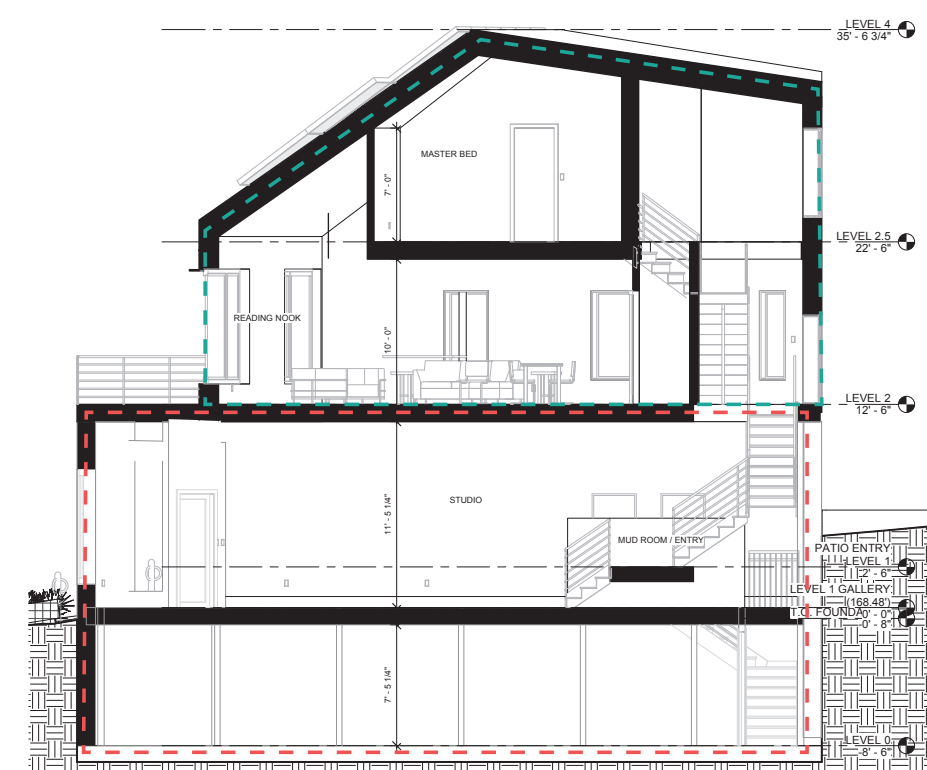
**FLOOR 2 LIVING + KITCHEN**



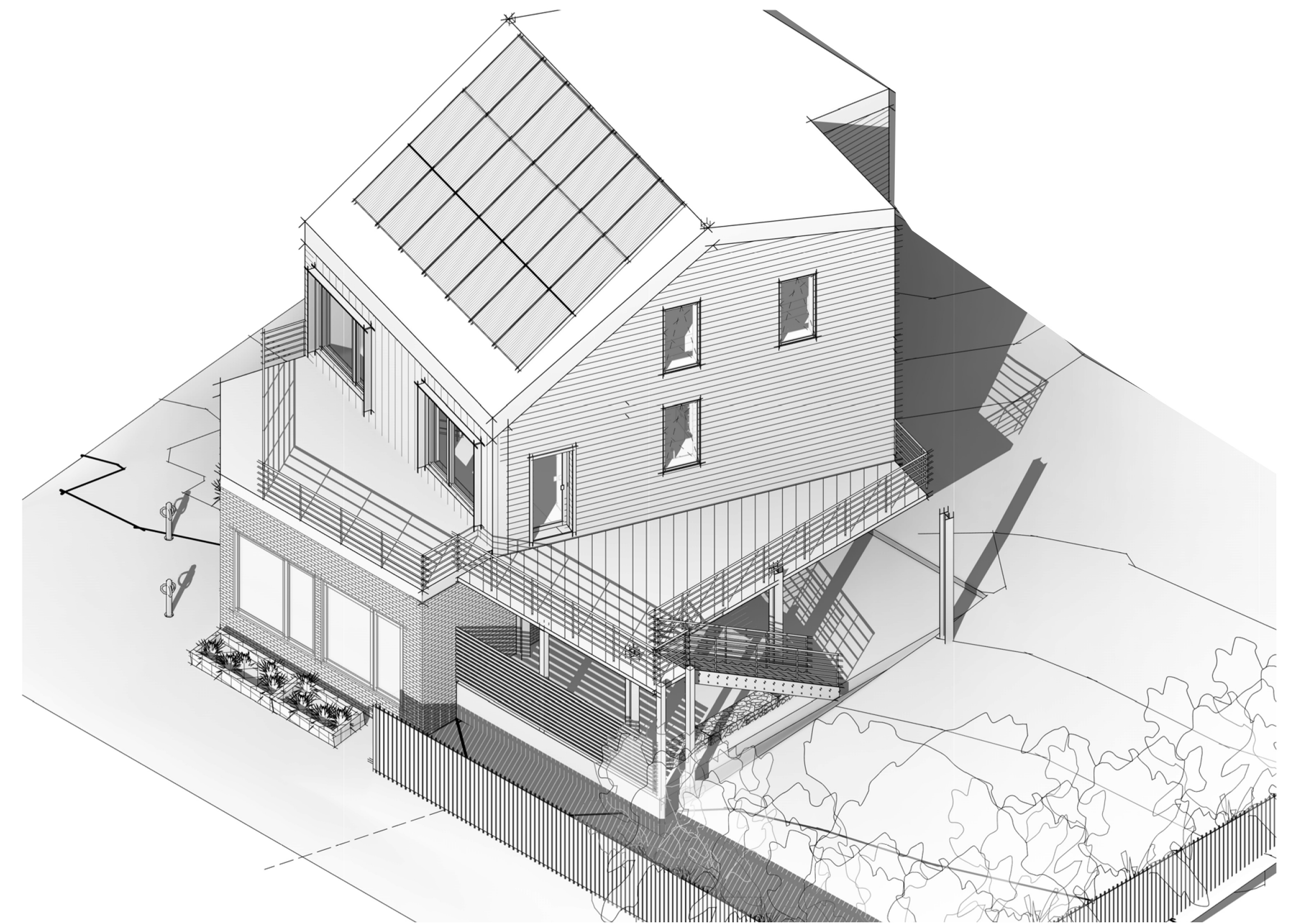
**FLOOR 2.5 - BEDROOMS**



**FRONT SECTION**



**PATIO SECTION**



**203 Elliot Street • Floor Plans • Section**



# Energy Usage:

(kBtu/ft<sup>2</sup>/yr)

Target Criteria is based on Passive House US Metrics for Boston Climate

Heating Demand: 3.54 (target: 6.19)

Cooling Demand: 4.03 (target: 2.45)

Heating Load: 3.82 (target: 4.62)

Cooling Load: 5.27 (3.25)

Source Energy: 4,192 kWh/person yr  
(target 6200 kWh/person yr)

Site Energy: 5.9 kW PV array  
Produces 7,949 kWh/Yr

