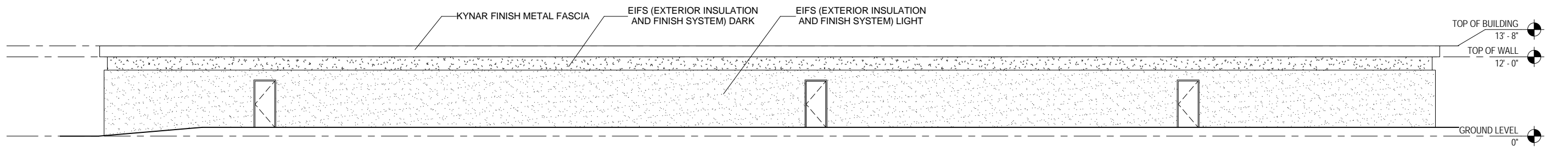
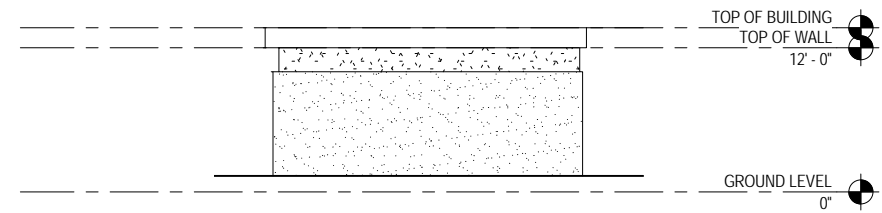


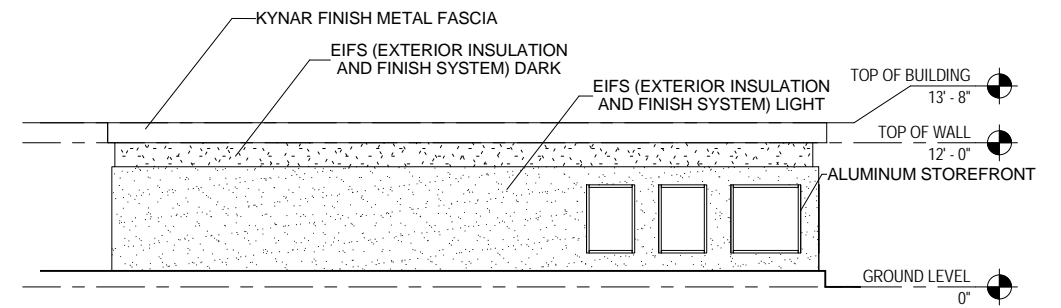
6 BUILDING ELEVATION - WEST
1/16" = 1'-0"



5 BUILDING ELEVATION - SOUTH
1/16" = 1'-0"

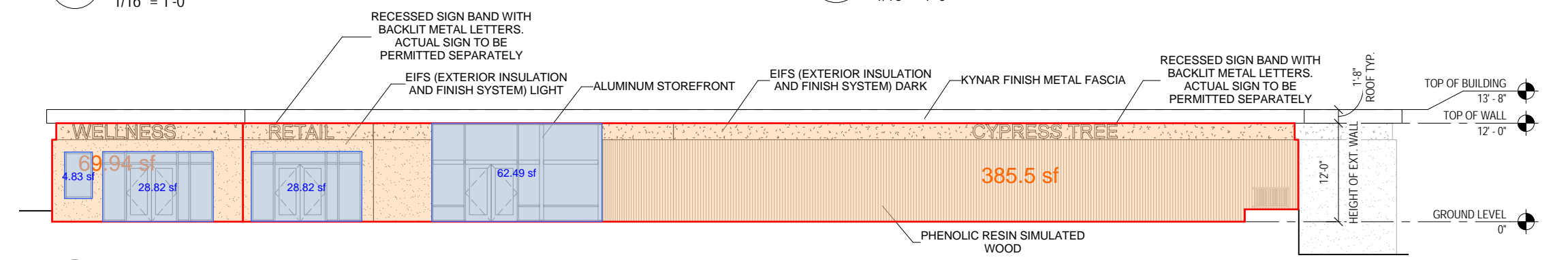


4 BUILDING ELEVATION - EAST 2
1/16" = 1'-0"



3 BUILDING ELEVATION - EAST 1
1/16" = 1'-0"

TRANSPARENCY AREA TOTAL: 124.96 sf;
BUILDING FRONT AREA TOTAL : 455.44 sf;
TRANSPARENCY PERCENTAGE: 27.4%



1 BUILDING ELEVATION - NORTH
1/16" = 1'-0"