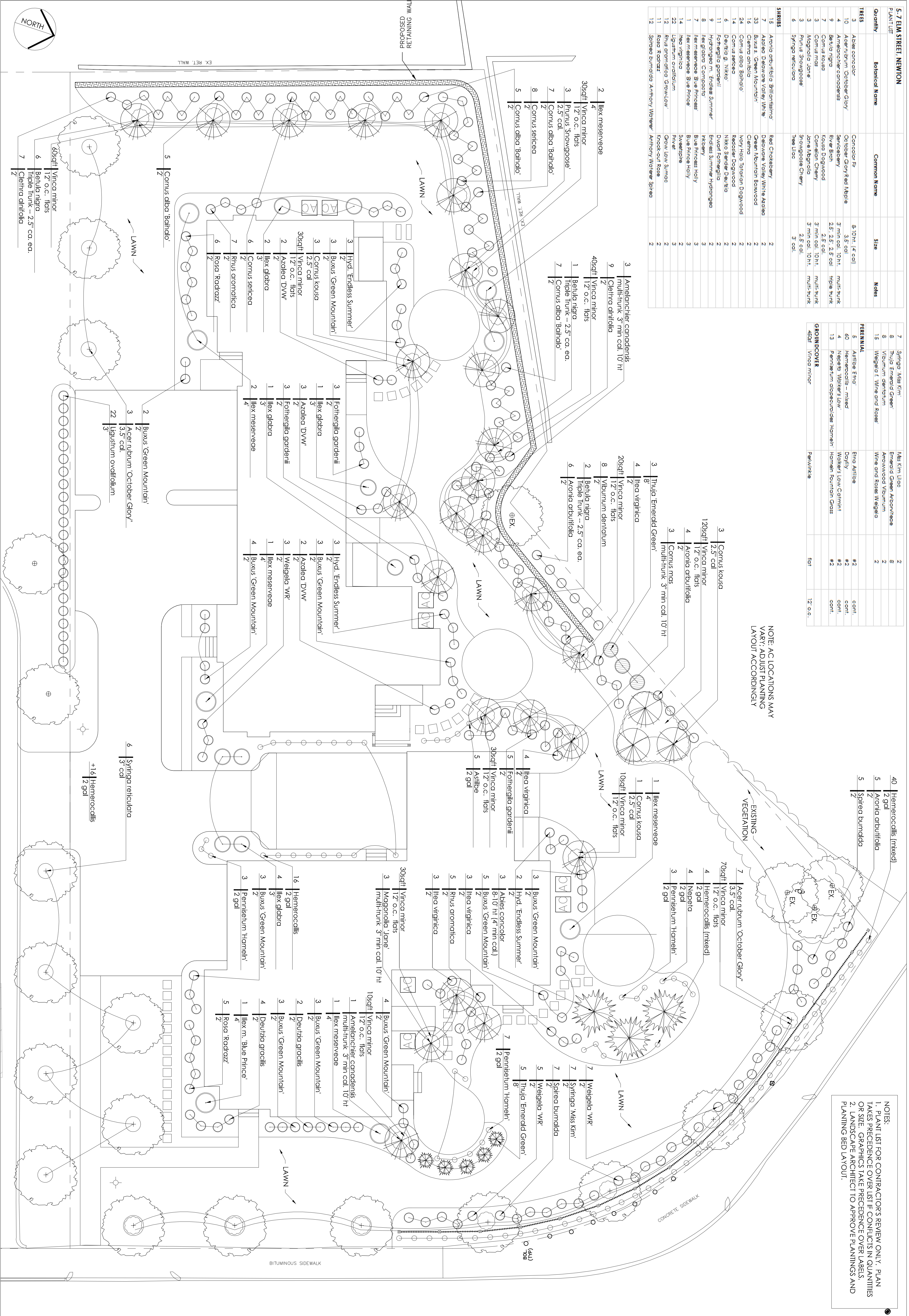


Quantity	Botanical Name	Common Name	Size	Notes
<b>TREES</b>				
3	Abies concolor	Concolor Fir	8-10h, 4" cal.	
10	Acer rubrum 'October Glory'	October Glory Red Maple	3.5" cal.	
4	Ametancler canadensis	Serviceberry	3" min cal., 10h.	multi-trunk
9	Betula nigra	River Birch	2.5', 2.5", 2.5" cal.	triple trunk
7	Cornus kousa	Kousa Dogwood	2.5" cal.	
3	Cornus mas	Cornelian Cherry	3" min cal., 10h.	multi-trunk
3	Magnolia 'Jane'	Jane Magnolia	3" min cal., 10h.	multi-trunk
6	Prunus Snowglobe	Snowglobe Cherry	2.5" cal.	
6	Syringa reticulata	Tree Lilac	3" cal.	
<b>SHRUBS</b>				
15	Aronia arbutifolia Brillantissima	Red Chokeberry	2	
7	Azalea Delaware Valley White Azalea	Delaware Valley White Azalea	2	
33	Buxus s. Green Mountain	Green Mountain Boxwood	2	
16	Celtis occidentalis	Celtis	2	
24	Cornus alba Bahndio'	Ivory Hole Tatarian Dogwood	2	
2	Cornus sericea	Redstart Dogwood	2	
6	Deutzia s. Nikko	Nikko Spider Buzia	2	
11	Forsythia gardenii	Dwarf Forsythia	2	
9	Hydrangea m. Endless Summer	Endless Summer Hydrangea	2	
8	Ilex glabra C. compacta	Compact Holly	3	
7	Ilex meserveae Blue Prince	Blue Prince Holly	3	
1	Ilex meserveae Blue Prince	Blue Prince Holly	3	
14	Ilex virginica	Sweetspine	3	
22	Ligustrum ovalifolium	Green Low Spirea	2	
12	Rhus aromatica 'Glow-Low'	Knock-out Rose	2	
11	Rosa 'Radar'	Rosa	2	
12	Spirea bumalda Anthony Waterer	Anthony Waterer Spirea	2	

7	Syringa Miss Kim'	Miss Kim Lilac	2
8	Thuja Emerald Green	Emerald Green Arborvitae	2
8	Viburnum dentatum	Aronwood Viburnum	2
15	Weigela t. Wine and Roses	Wine and Roses Weigela	2
<b>PERENNIAL</b>			
5	Asiatic Eric.	Euro Asiatic	#2
40	Hemerocallis - mixed	Doxilly	#2
4	Nepeta Walker's Low'	Walker's Low Catmint	#2
13	Penstemon dipcensoides Hameln	Hameln Fountain Grass	#2
<b>GROUNDCOVER</b>			
45gal	Vinca minor	Pavlovskia	12" o.c.

NOTE: AC LOCATIONS MAY VARY. ADJUST PLANTING LAYOUT ACCORDINGLY



NOTES:  
 1. PLANT LIST FOR CONTRACTOR'S REVIEW ONLY. PLAN TAKES PRECEDENCE OVER LIST IF CONFLICTS IN QUANTITIES OR SIZE. GRAPHICS TAKE PRECEDENCE OVER LABELS.  
 2. LANDSCAPE ARCHITECT TO APPROVE PLANTINGS AND PLANTING BED LAYOUT.

ISSUED	DATE	REVISION
1	10.13.14	REVIEW AND COORDINATION
2	11.04.14	REVIEW AND COORDINATION
3	11.21.14	REVIEW AND COORDINATION
4		
5		
6		

**PLANTING PLAN**

SCALE: 0' 4' 8'

**5 - 7 ELM STREET  
 NEWTON, MA**

**RYAN ASSOCIATES**  
 LANDSCAPE ARCHITECTURE AND PLANNING  
 Building 4  
 144 Moody Street  
 Waltham, MA 02453  
 ph: 781.314.0401  
 fx: 781.314.0150

**L-3.0**