



SpaceCraft Architecture, Inc.
 5 Raymond Street
 Lexington, MA 02421
 www.SpaceCraftArch.com
 781-223-5665

FLOOR PLAN
5-7 ELM STREET RESIDENCE: UNITS 1 & 2
 5-7 ELM STREET
 NEWTON, MA 02465

SCALE:
 1/4" = 1'-0"
 DATE:
 1 21 NOV 14

A101

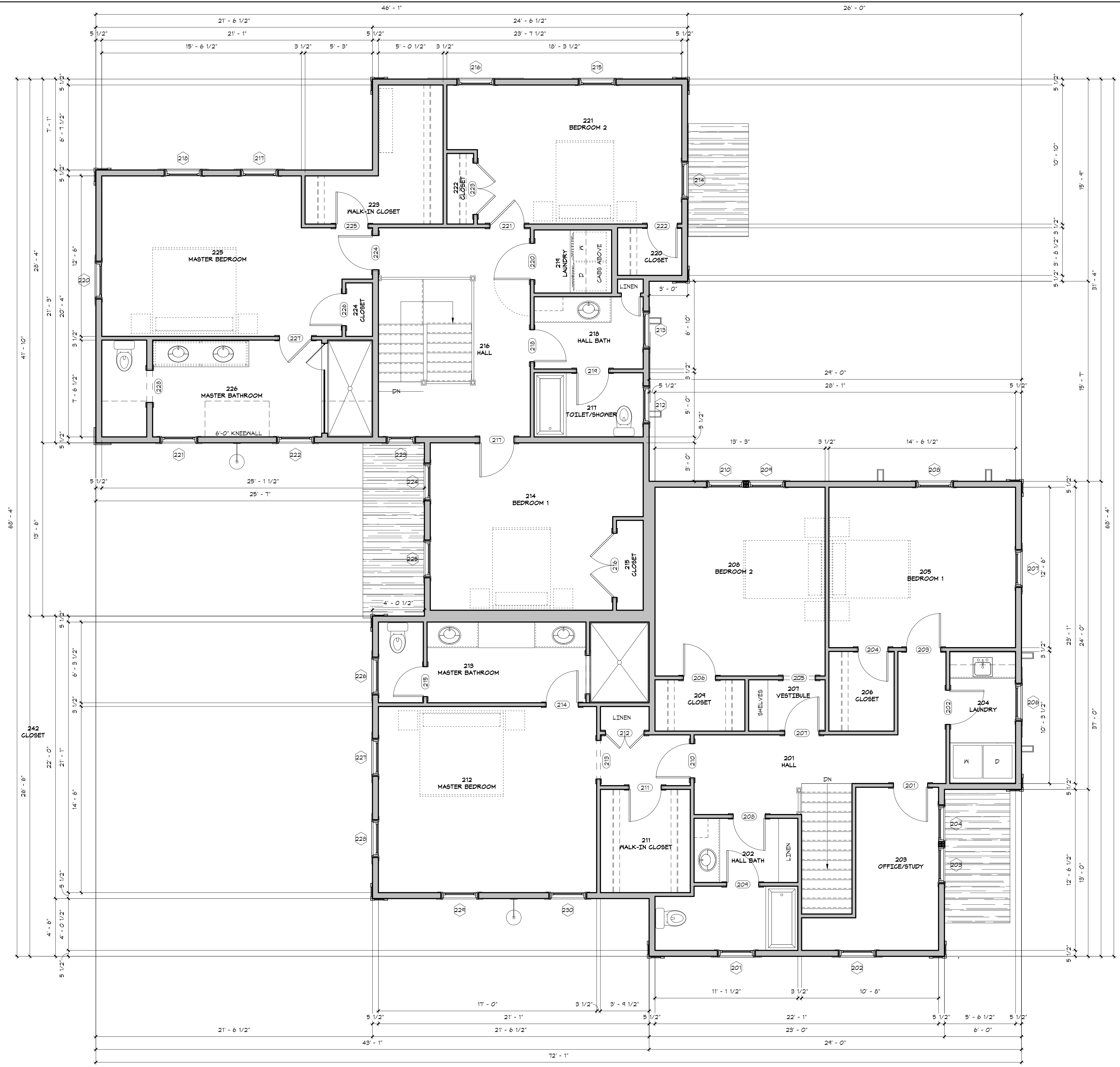


- FLOOR PLAN KEY:**
- INDICATES COLUMN/POST
 - INDICATES CARBON MONOXIDE DETECTOR
 - INDICATES SMOKE DETECTOR
 - INDICATES HEAT DETECTOR
 - INDICATES CONCRETE WALL
 - INDICATES NEA STRUCTURE
 - INDICATES EGRESS
 - INDICATES SHOWER HEAD
 - INDICATES BUILDING CORNER BELOW
 - DOOR TAG
 - WINDOW TAG

1 UNITS 1 & 2 - FIRST FLOOR
 1/4" = 1'-0"

11/15/14 2:34 PM - J:\Projects\5-7 Elm Street\5-7 Elm Street\Neat\Proposed\014 - 11 Nov 2014.rvt

11/27/2014 2:24:44 PM - J:\A102 - 5-7 Elm Street, Newton, MA\Drawings\A102-5-7 Elm Street, Newton, MA\Proposed\Units 1 & 2\2nd Floor\2nd Floor.dwg



1 UNIT 1 & 2 - SECOND FLOOR
1/4" = 1'-0"

- FLOOR PLAN KEY:**
- INDICATES COLUMN/POST
 - ⊙ INDICATES CARBON MONOXIDE DETECTOR
 - ⊙ INDICATES SMOKE DETECTOR
 - ⊙ INDICATES HEAT DETECTOR
 - ▭ INDICATES CONCRETE WALL
 - ▭ INDICATES NEW STRUCTURE
 - ← EGRESS → INDICATES EGRESS
 - ⊞ INDICATES SHOWER HEAD
 - └ INDICATES BUILDING CORNER BELOW
 - ⊙101 INDICATES DOOR TAG
 - ⊙11 INDICATES WINDOW TAG



1 DRIVWAY SIDE ELEVATION
1/4" = 1'-0"



2 RIVER STREET ELEVATION
1/4" = 1'-0"



SpaceCraft Architecture, Inc.
5 Raymond Street
Lexington, MA 02421
www.SpaceCraftArch.com
781-223-5665

ELEVATIONS
5-7 ELM STREET RESIDENCE: UNITS 1 & 2
5-7 ELM STREET
NEWTON, MA 02465

SCALE:
1/4" = 1'-0"
DATE:
1 21 NOV 14

A200

11/21/2014 2:24:30 PM - J:\Projects\5-7 Elm Street\Residence\Units 1 & 2\Drawings\A200.dwg (11/21/2014 2:24:30 PM)



1 LEFT ELEVATION
1/4" = 1'-0"



2 ELM STREET ELEVATION
1/4" = 1'-0"



SpaceCraft Architecture, Inc.
5 Raymond Street
Lexington, MA 02421
www.SpaceCraftArch.com
781-223-5665

ELEVATIONS
5-7 ELM STREET RESIDENCE: UNITS 1 & 2
5-7 ELM STREET
NEWTON, MA 02465

SCALE:
1/4" = 1'-0"
DATE:
1 21 NOV 14

A201

1/21/2014 2:28 PM - J:\Projects\5-7 Elm Street, Newton, MA\Drawings\Arch\5-7 Elm Street, Newton, Proposed\01A_102_ELEV02.DWG, 11 NOV 2014