

RYAN ASSOCIATES
 LANDSCAPE ARCHITECTURE AND PLANNING
 Building 104 Street
 Waltham, MA 02453
 ph: 781.314.0401
 www.ryan-assoc.com

**5 - 7 ELM STREET
 NEWTON, MA**

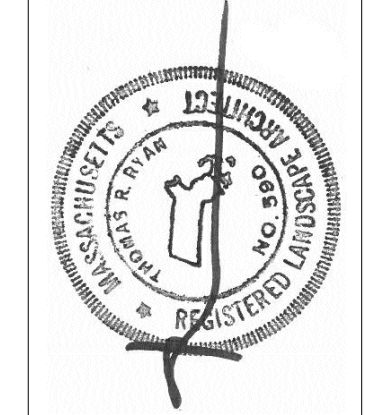
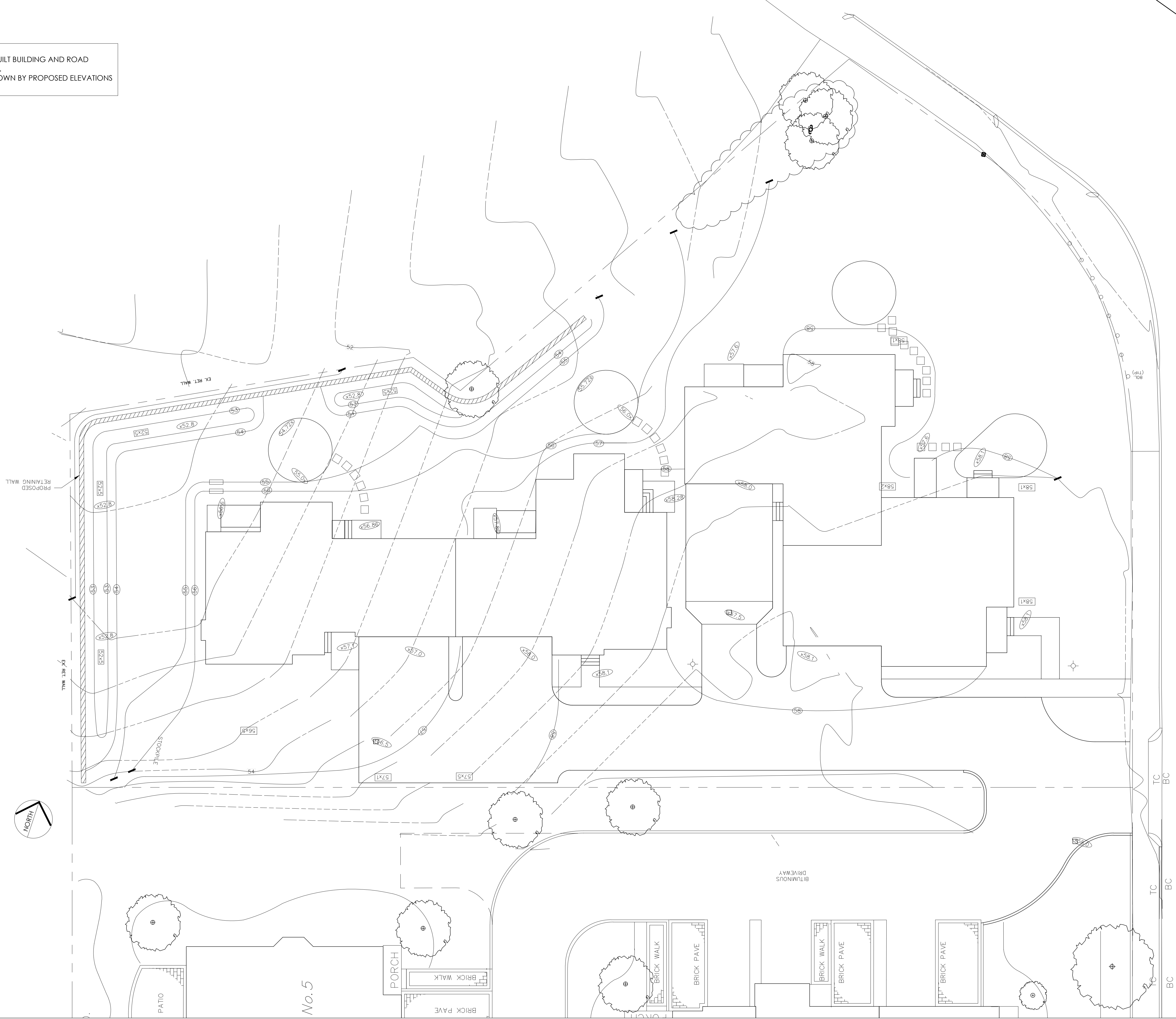
**LAYOUT PLAN
 AND LIGHTING**
 SCALE: 5' 0" 10'

ISSUED	REVIEW AND COORDINATION
1	10.13.14 REVIEW AND COORDINATION
2	11.21.14 REVIEW AND COORDINATION
3	03.01.18 DRIVEWAY LAYOUT UPDATE
4	04.30.18 DRIVEWAY LAYOUT UPDATE
5	
6	

L-1.0

NOTES:
 1) FIELD CONDITONS MAY HAVE CHANGED: AS-BUILT BUILDING AND ROAD ELEVATIONS MAY VARY FROM WHAT IS SHOWN.
 2) MAINTAIN RELATIVE CONDITIONS TO THOSE SHOWN BY PROPOSED ELEVATIONS WHERE CONDITIONS VARY.

n/f
 LEOPOLDO BUTERA AND AMELIA BUTERA
 12828/518 (1975) d.
 PL. NO. 1080 (1960)



RYAN ASSOCIATES
 LANDSCAPE ARCHITECTURE AND PLANNING
 Building 4
 Elm Street
 Welham, MA 02463
 ph: 781.314.0401
 www.ryan-assoc.com

**5 - 7 ELM STREET
 NEWTON, MA**

GRADING PLAN
 SCALE: 5' 0" = 10'

ISSUED	REVIEW AND COORDINATION
1	10.13.14 REVIEW AND COORDINATION
2	11.21.14 REVIEW AND COORDINATION
3	03.01.18 DRIVEWAY LAYOUT UPDATE
4	04.30.18 DRIVEWAY LAYOUT UPDATE
5	
6	

L-2.0

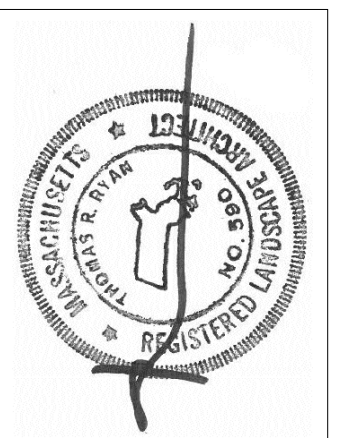
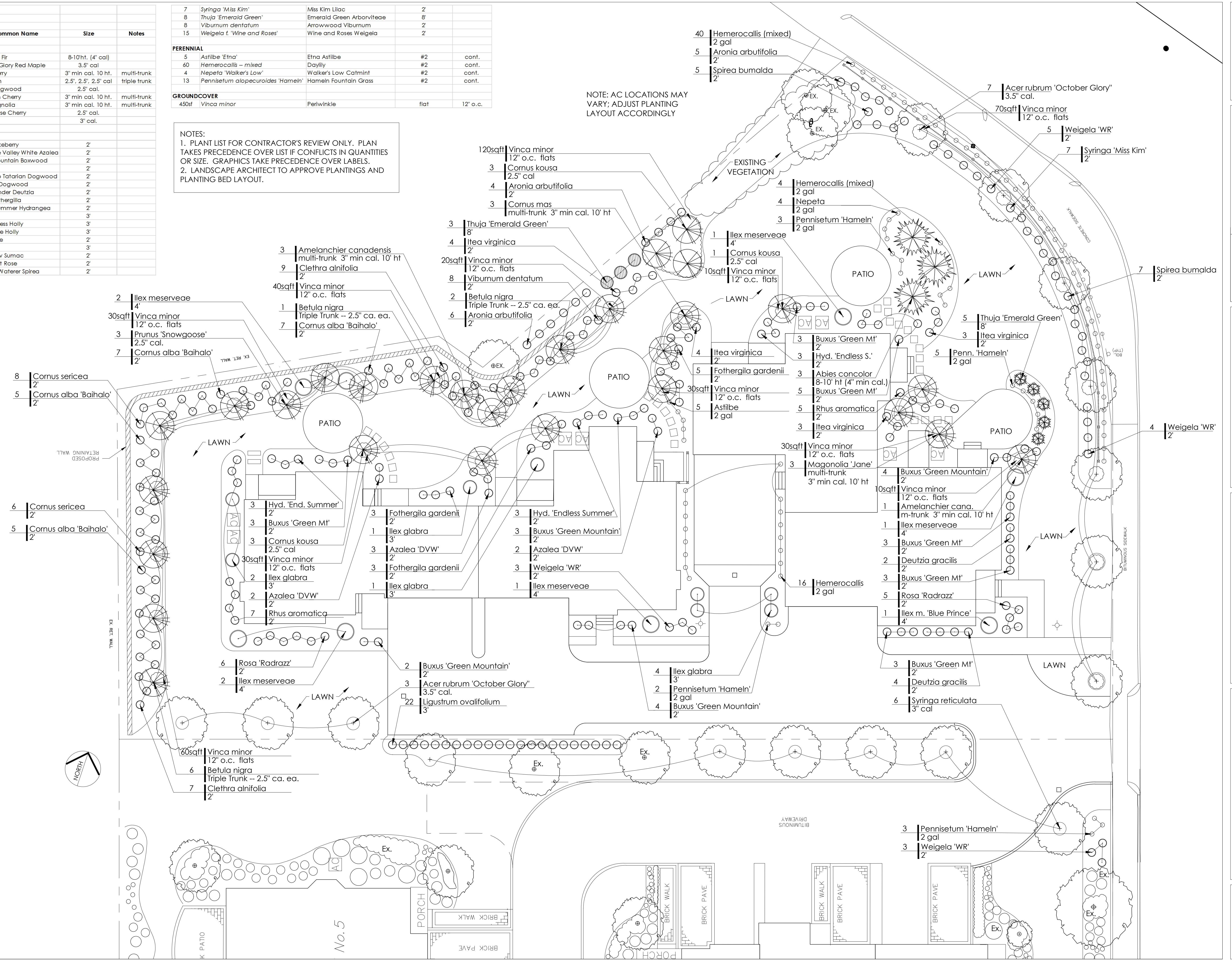
5-7 ELM STREET, NEWTON

Quantity	Botanical Name	Common Name	Size	Notes
TREES				
3	<i>Abies concolor</i>	Concolor Fir	8-10'ht. (4" cal)	
10	<i>Acer rubrum 'October Glory'</i>	October Glory Red Maple	3.5" cal	
4	<i>Amelanchier canadensis</i>	Serviceberry	3" min cal. 10' ht.	multi-trunk
9	<i>Betula nigra</i>	River Birch	2.5", 2.5", 2.5" cal	triple trunk
7	<i>Cornus kousa</i>	Kousa Dogwood	2.5" cal.	
3	<i>Cornus mas</i>	Cornelian Cherry	3" min cal. 10' ht.	multi-trunk
3	<i>Magnolia 'Jane'</i>	Jane Magnolia	3" min cal. 10' ht.	multi-trunk
3	<i>Prunus 'Snowgoose'</i>	Snowgoose Cherry	2.5" cal.	
6	<i>Syringa reticulata</i>	Tree Lilac	3" cal.	
SHRUBS				
15	<i>Aronia arbutifolia 'Brilliantissima'</i>	Red Chokeberry	2'	
7	<i>Azalea 'Delaware Valley White'</i>	Delaware Valley White Azalea	2'	
33	<i>Buxus s. 'Green Mountain'</i>	Green Mountain Boxwood	2'	
16	<i>Clethra alnifolia</i>	Clethra	2'	
24	<i>Cornus alba 'Baihalo'</i>	Ivory Halo Tatarian Dogwood	2'	
14	<i>Cornus sericea</i>	Redosier Dogwood	2'	
6	<i>Deutzia g. 'Nikko'</i>	Nikko Slender Deutzia	2'	
11	<i>Fothergilla gardenii</i>	Dwarf Fothergilla	2'	
9	<i>Hydrangea m. 'Endless Summer'</i>	Endless Summer Hydrangea	2'	
8	<i>Ilex glabra 'Compacta'</i>	Inkberry	3'	
7	<i>Ilex meserveae 'Blue Princess'</i>	Blue Princess Holly	3'	
1	<i>Ilex meserveae 'Blue Prince'</i>	Blue Prince Holly	3'	
14	<i>Itea virginica</i>	Sweetpire	2'	
22	<i>Ligustrum ovalifolium</i>	Privet	3'	
12	<i>Rhus aromatica 'Grow-Low'</i>	Grow Low Sumac	2'	
11	<i>Rosa 'Radrazz'</i>	Knock-Out Rose	2'	
12	<i>Spiraea bumalda 'Anthony Waterer'</i>	Anthony Waterer Spirea	2'	

7	<i>Syringa 'Miss Kim'</i>	Miss Kim Lilac	2'	
8	<i>Thuja 'Emerald Green'</i>	Emerald Green Arborvitae	8'	
8	<i>Viburnum dentatum</i>	Arrowwood Viburnum	2'	
15	<i>Weigela f. 'Wine and Roses'</i>	Wine and Roses Weigela	2'	
PERENNIAL				
5	<i>Astilbe 'Etna'</i>	Etna Astilbe	#2	cont.
60	<i>Hemerocallis -- mixed</i>	Daylily	#2	cont.
4	<i>Nepeta 'Walker's Low'</i>	Walker's Low Catmint	#2	cont.
13	<i>Pennisetum alopecuroides 'Hameln'</i>	Hameln Fountain Grass	#2	cont.
GROUND COVER				
450sf	<i>Vinca minor</i>	Periwinkle	flat	12" o.c.

NOTES:
 1. PLANT LIST FOR CONTRACTOR'S REVIEW ONLY. PLAN TAKES PRECEDENCE OVER LIST IF CONFLICTS IN QUANTITIES OR SIZE. GRAPHICS TAKE PRECEDENCE OVER LABELS.
 2. LANDSCAPE ARCHITECT TO APPROVE PLANTINGS AND PLANTING BED LAYOUT.

NOTE: AC LOCATIONS MAY VARY; ADJUST PLANTING LAYOUT ACCORDINGLY



RYAN ASSOCIATES
 LANDSCAPE ARCHITECTURE AND PLANNING
 Building 4
 103 Lincoln Street
 Welham, MA 02463
 ph: 781.340.001
 www.ryan-assoc.com

**5 - 7 ELM STREET
 NEWTON, MA**

PLANTING PLAN
 SCALE: 5' 0" 10'

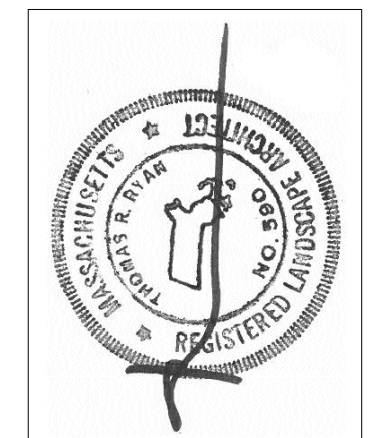
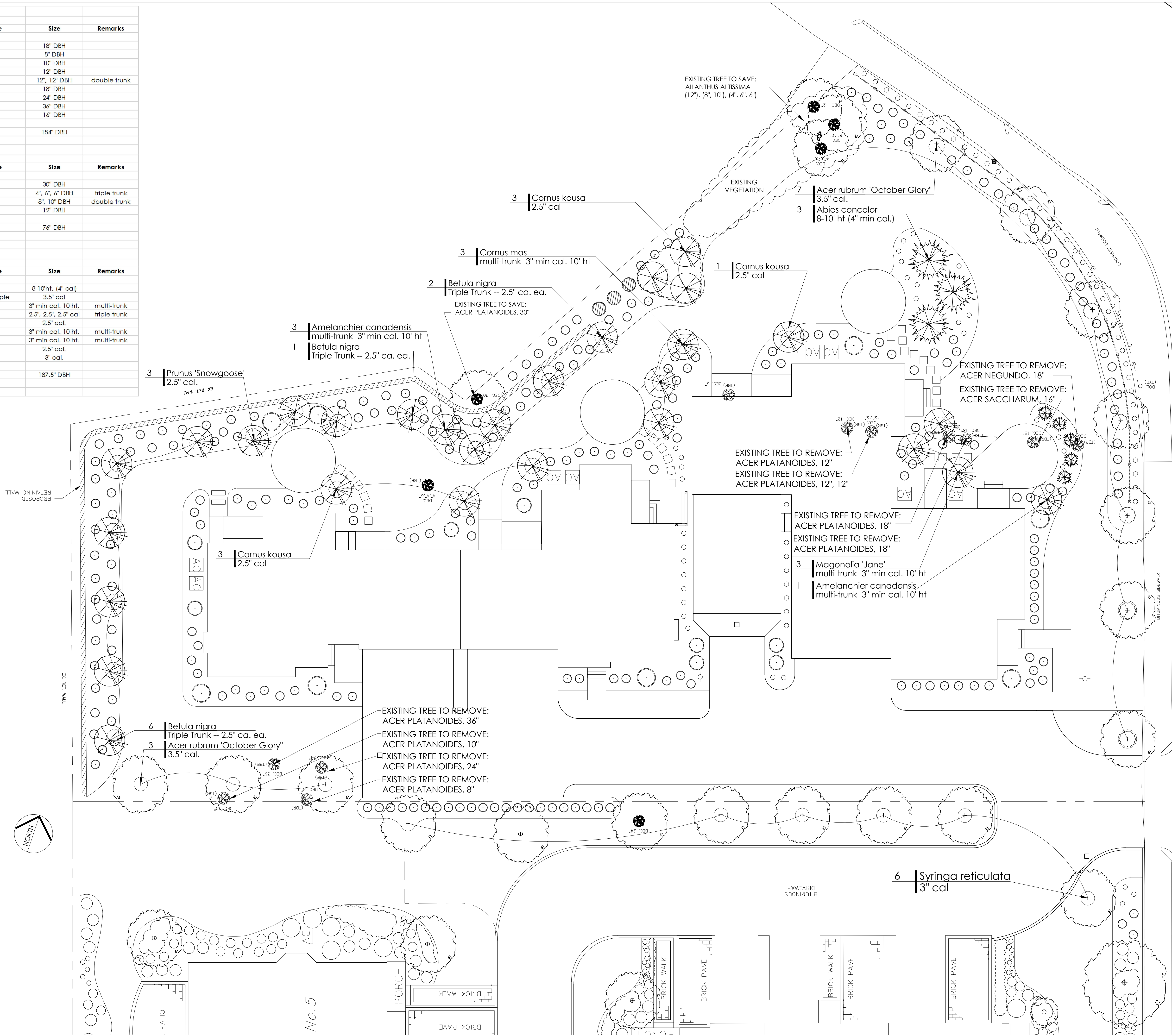
ISSUED	10.13.14	REVIEW AND COORDINATION
1	11.04.14	REVIEW AND COORDINATION
2	11.21.14	REVIEW AND COORDINATION
3	03.01.18	DRIVEWAY LAYOUT UPDATE
4	04.30.18	DRIVEWAY LAYOUT UPDATE
5		
6		

L-3.0

5-7 ELM TREES TO BE REMOVED				
Quantity	Botanical Name	Common Name	Size	Remarks
1	<i>Acer negundo</i>	Box Elder	18" DBH	
1	<i>Acer platanoides</i>	Norway Maple	8" DBH	
1	<i>Acer platanoides</i>	Norway Maple	10" DBH	
1	<i>Acer platanoides</i>	Norway Maple	12" DBH	
1	<i>Acer platanoides</i>	Norway Maple	12', 12" DBH	double trunk
2	<i>Acer platanoides</i>	Norway Maple	18" DBH	
1	<i>Acer platanoides</i>	Norway Maple	24" DBH	
1	<i>Acer platanoides</i>	Norway Maple	36" DBH	
1	<i>Acer saccharum</i>	Sugar Maple	16" DBH	
TOTAL:			184" DBH	

5-7 ELM TREES TO REMAIN				
Quantity	Botanical Name	Common Name	Size	Remarks
1	<i>Acer platanoides</i>	Norway Maple	30" DBH	
1	<i>Ailanthus altissima</i>	Tree of Heaven	4", 6", 6" DBH	triple trunk
1	<i>Ailanthus altissima</i>	Tree of Heaven	8", 10" DBH	double trunk
1	<i>Ailanthus altissima</i>	Tree of Heaven	12" DBH	
TOTAL:			76" DBH	

5-7 ELM PROPOSED TREES				
Quantity	Botanical Name	Common Name	Size	Remarks
3	<i>Abies concolor</i>	Concolor Fir	8-10' ht. [4" cal]	
10	<i>Acer rubrum 'October Glory'</i>	October Glory Red Maple	3.5" cal	
4	<i>Amelanchier canadensis</i>	Serviceberry	3" min cal, 10 ht.	multi-trunk
9	<i>Betula nigra</i>	River Birch	2.5", 2.5", 2.5" cal	triple trunk
7	<i>Cornus kousa</i>	Kousa Dogwood	2.5" cal.	
3	<i>Cornus mas</i>	Cornelian Cherry	3" min cal, 10 ht.	multi-trunk
3	<i>Magnolia 'Jane'</i>	Jane Magnolia	3" min cal, 10 ht.	multi-trunk
3	<i>Prunus 'Snowgoose'</i>	Snowgoose Cherry	2.5" cal.	
6	<i>Syringa reticulata</i>	Tree Lilac	3" cal.	
TOTAL:			187.5" DBH	



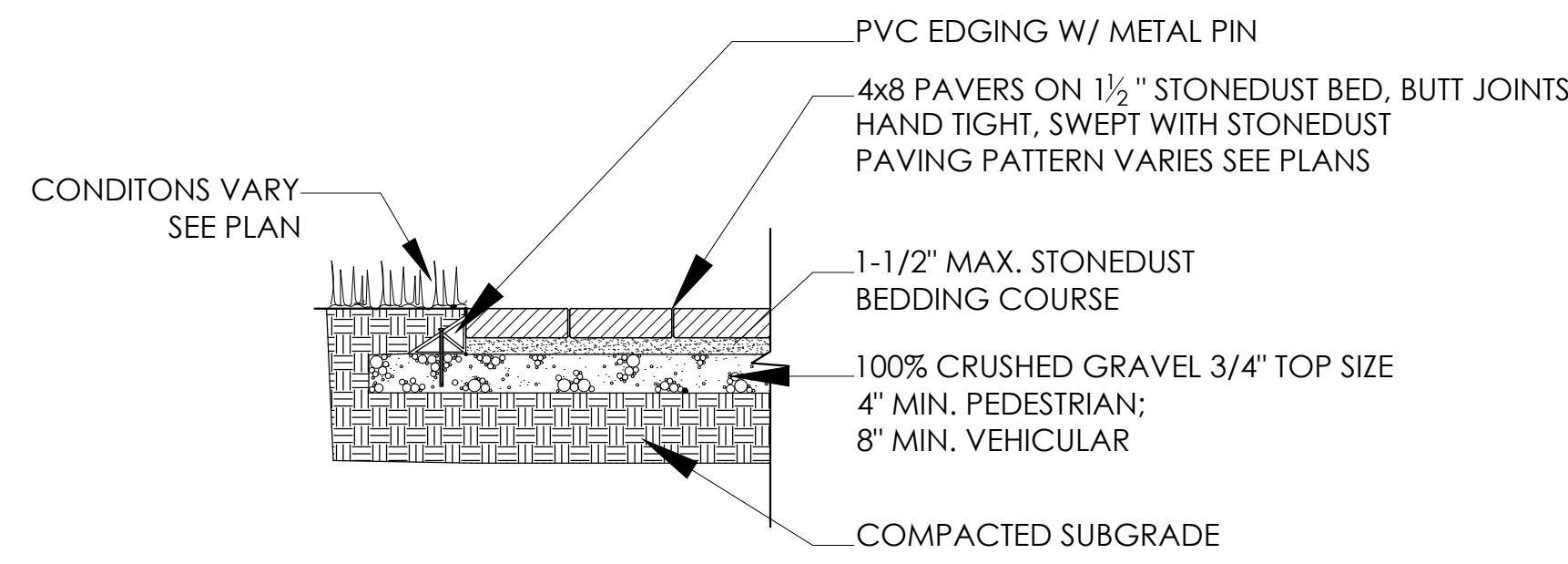
RYAN ASSOCIATES
 LANDSCAPE ARCHITECTURE AND PLANNING
 Building 4, Street
 Welham, MA 02453
 ph: 781.314.0401
 www.ryan-assoc.com

**5 - 7 ELM STREET
 NEWTON, MA**

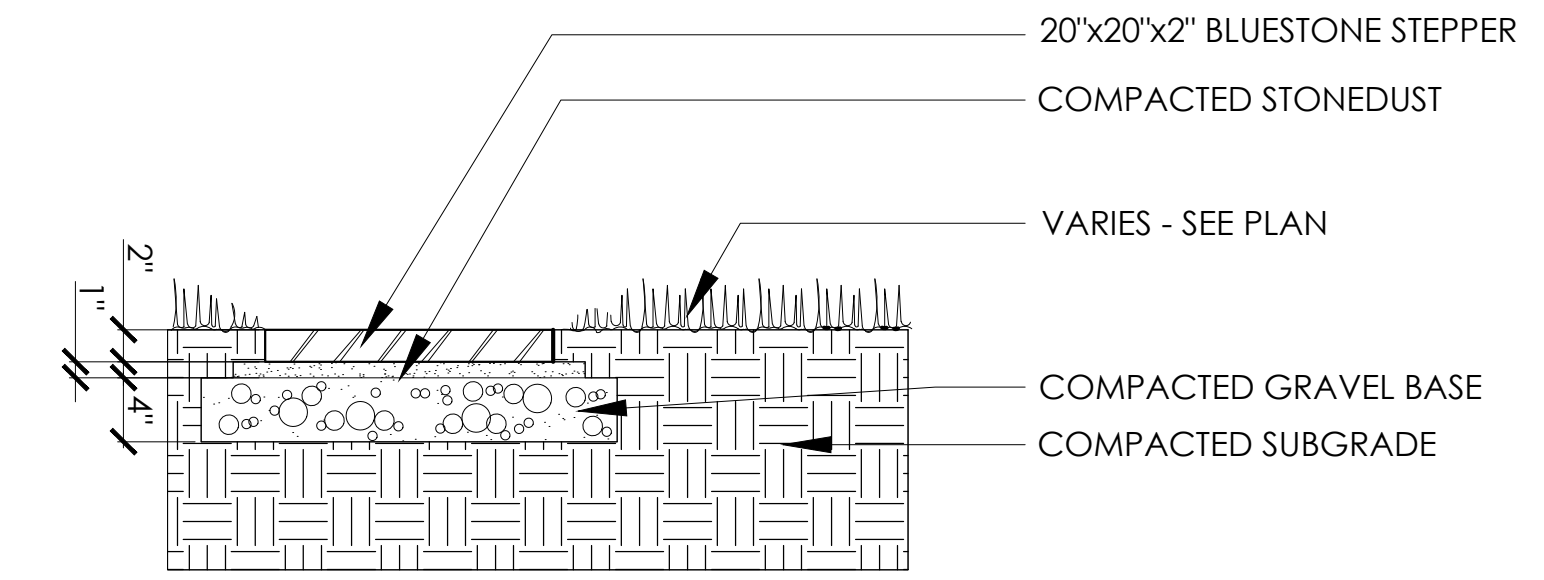
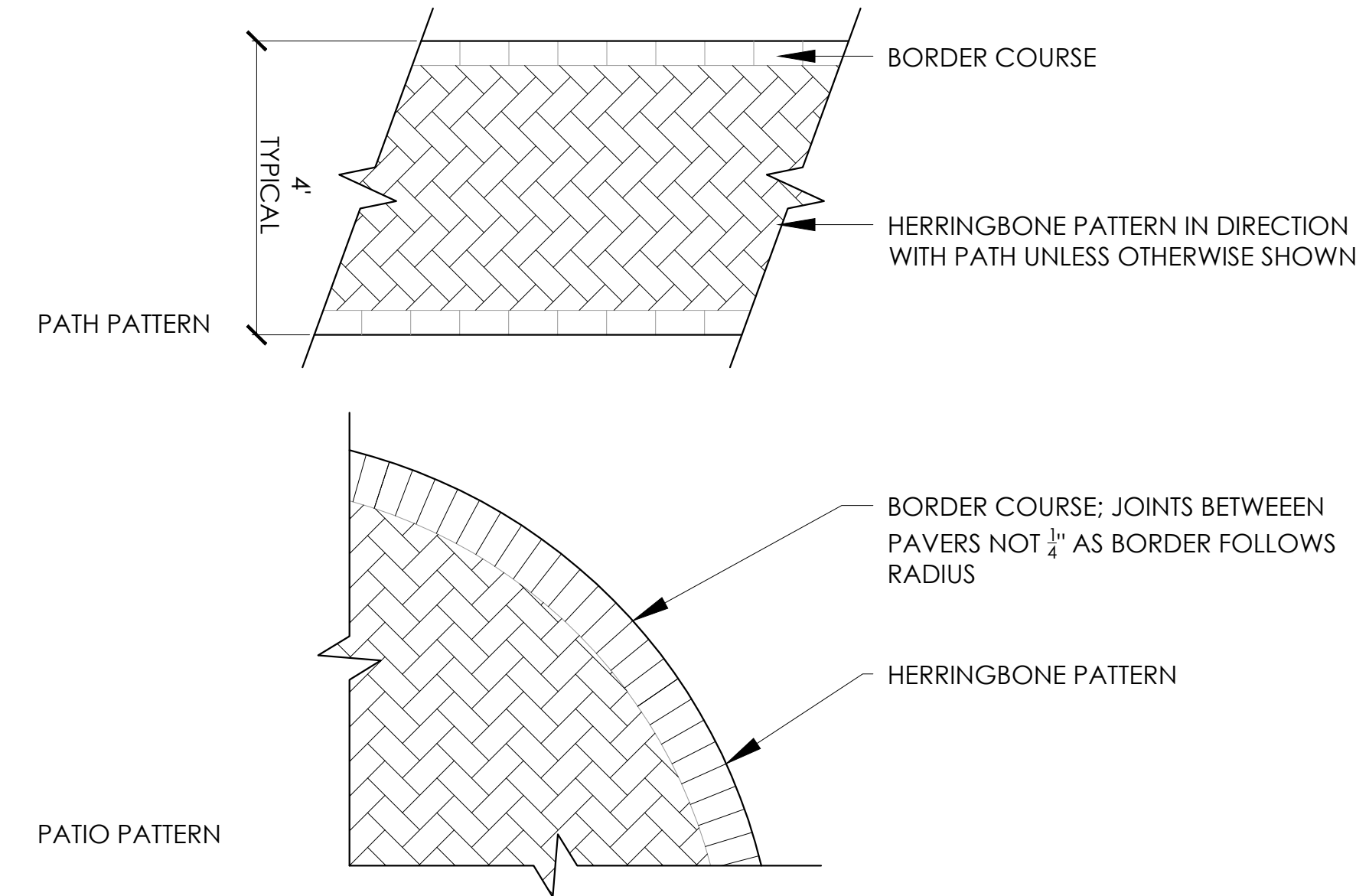
**TREE REMOVAL AND
 REPLACEMENT PLAN**
 SCALE: 5' 0" = 10'

ISSUED	REVIEW AND COORDINATION
1	10.13.14
2	11.04.14
3	11.21.14
4	03.01.18
5	04.30.18
6	

L-3.1



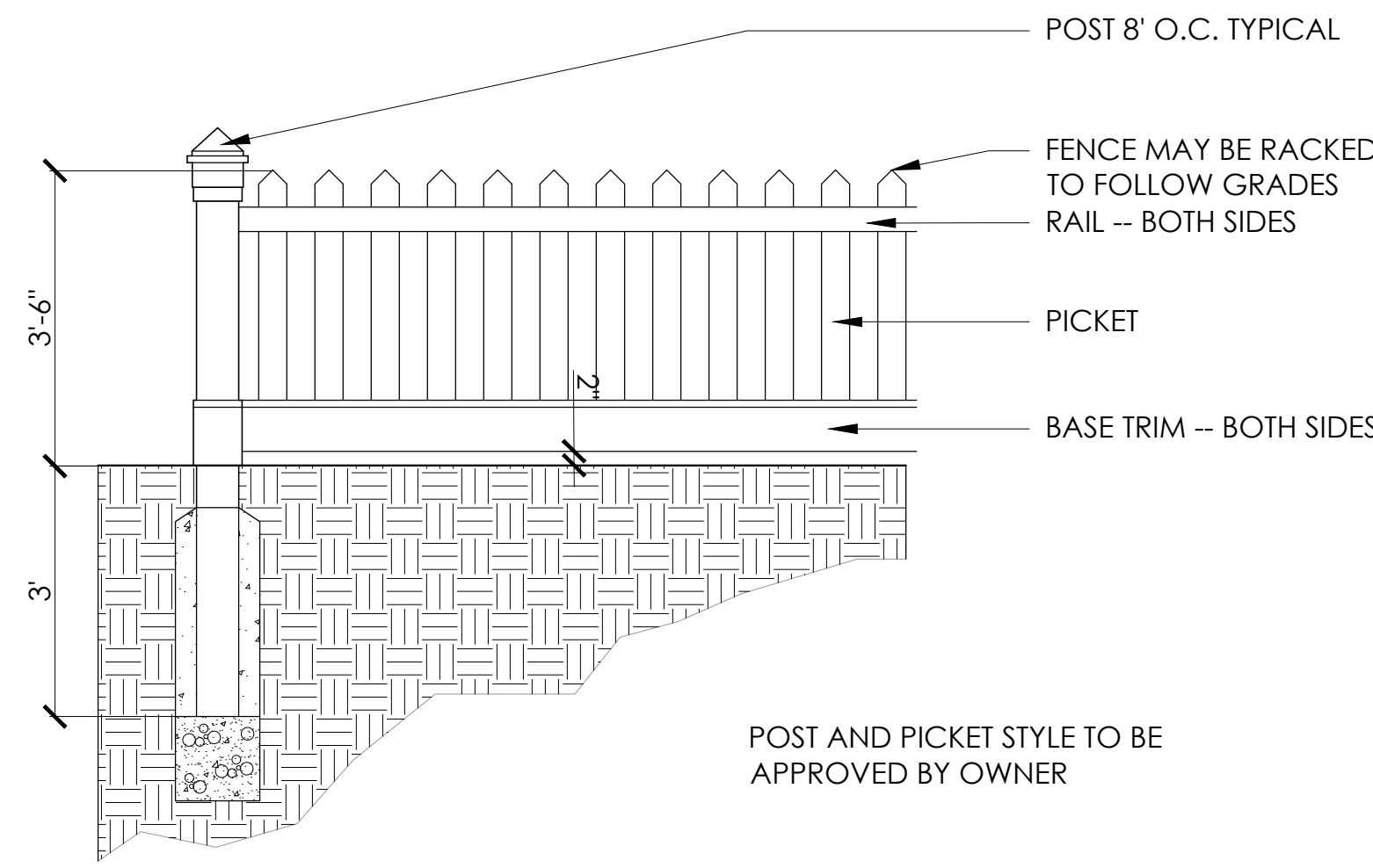
PAVER SELECTION TO BE APPROVED BY OWNER
SLOPE MIN. 1/4" PER FT. FOR DRAINAGE



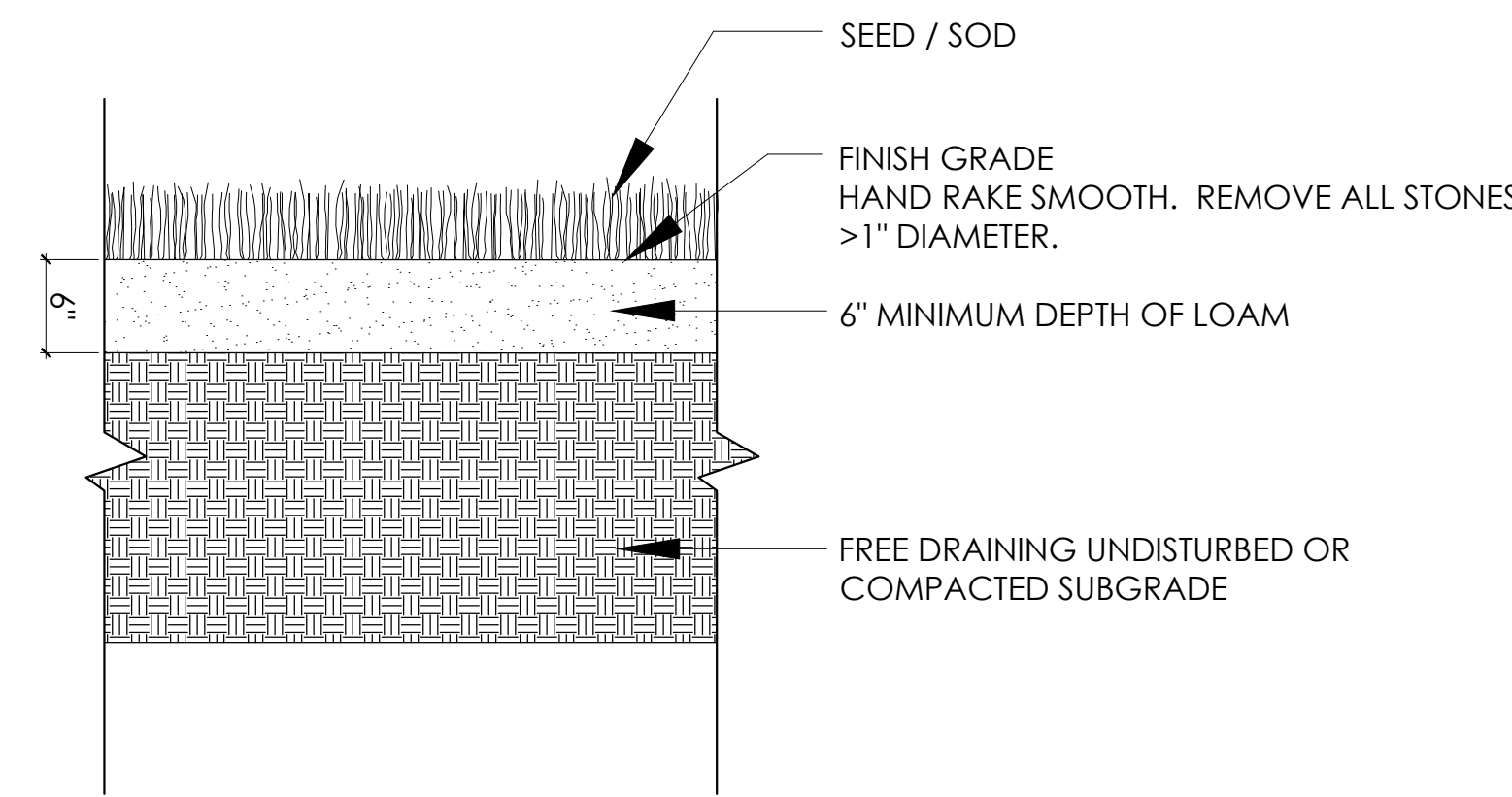
1 PAVER SECTION
SCALE: 1" = 1' - 0"

2 PAVING PATTERNS
SCALE: 1/2" = 1' - 0"

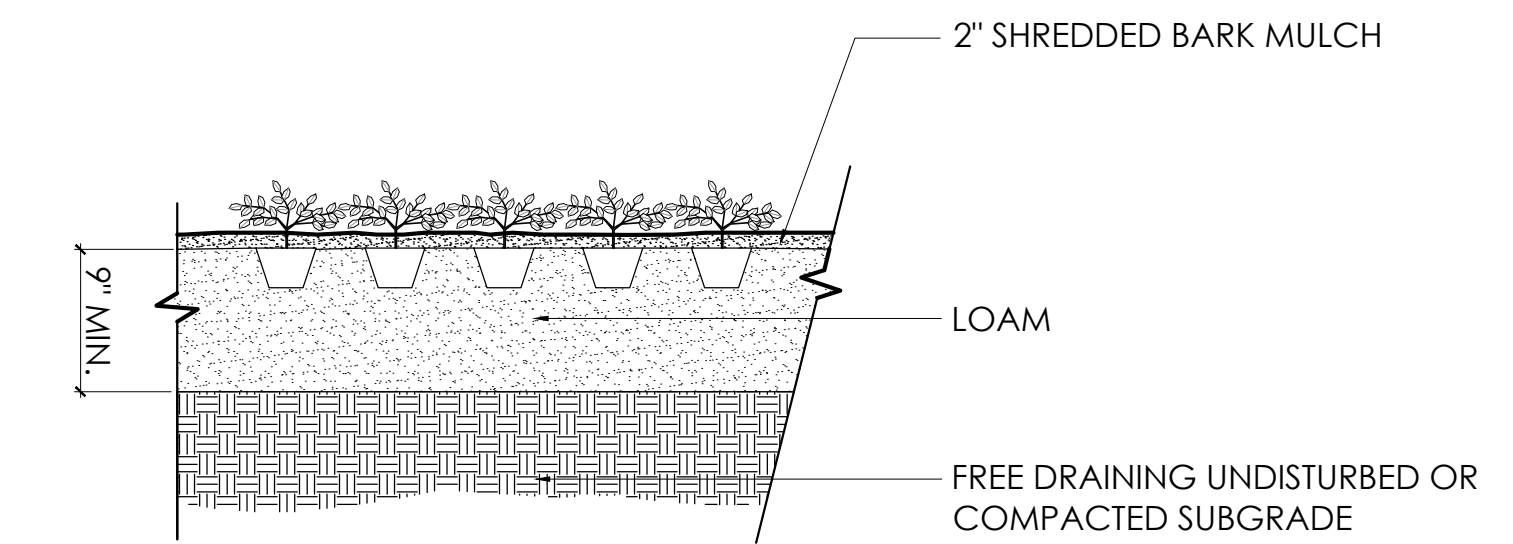
3 STEPPING STONE
SCALE: 1" = 1' - 0"



4 PICKET FENCE
SCALE: 1/2" = 1' - 0"

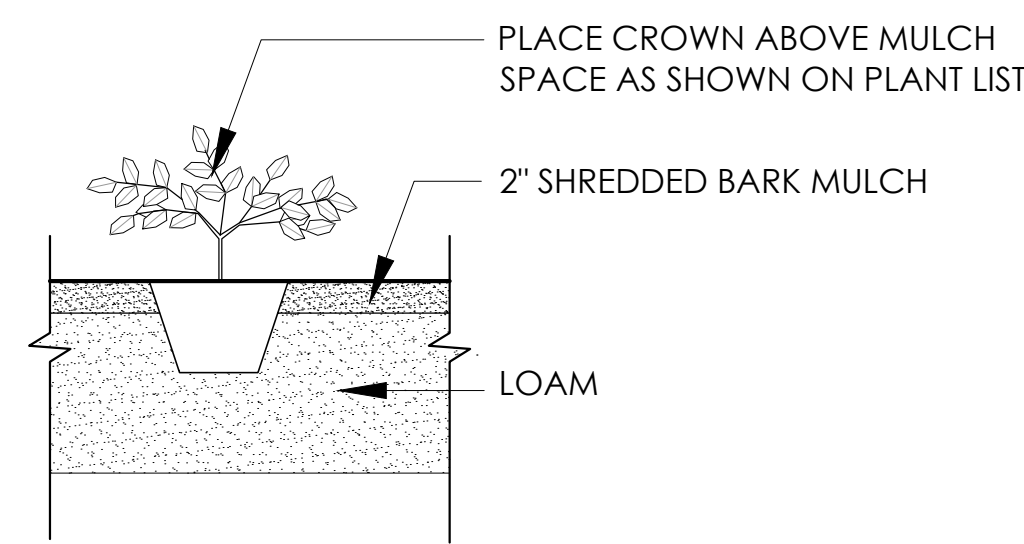


5 LAWN
SCALE: 1" = 1' - 0"



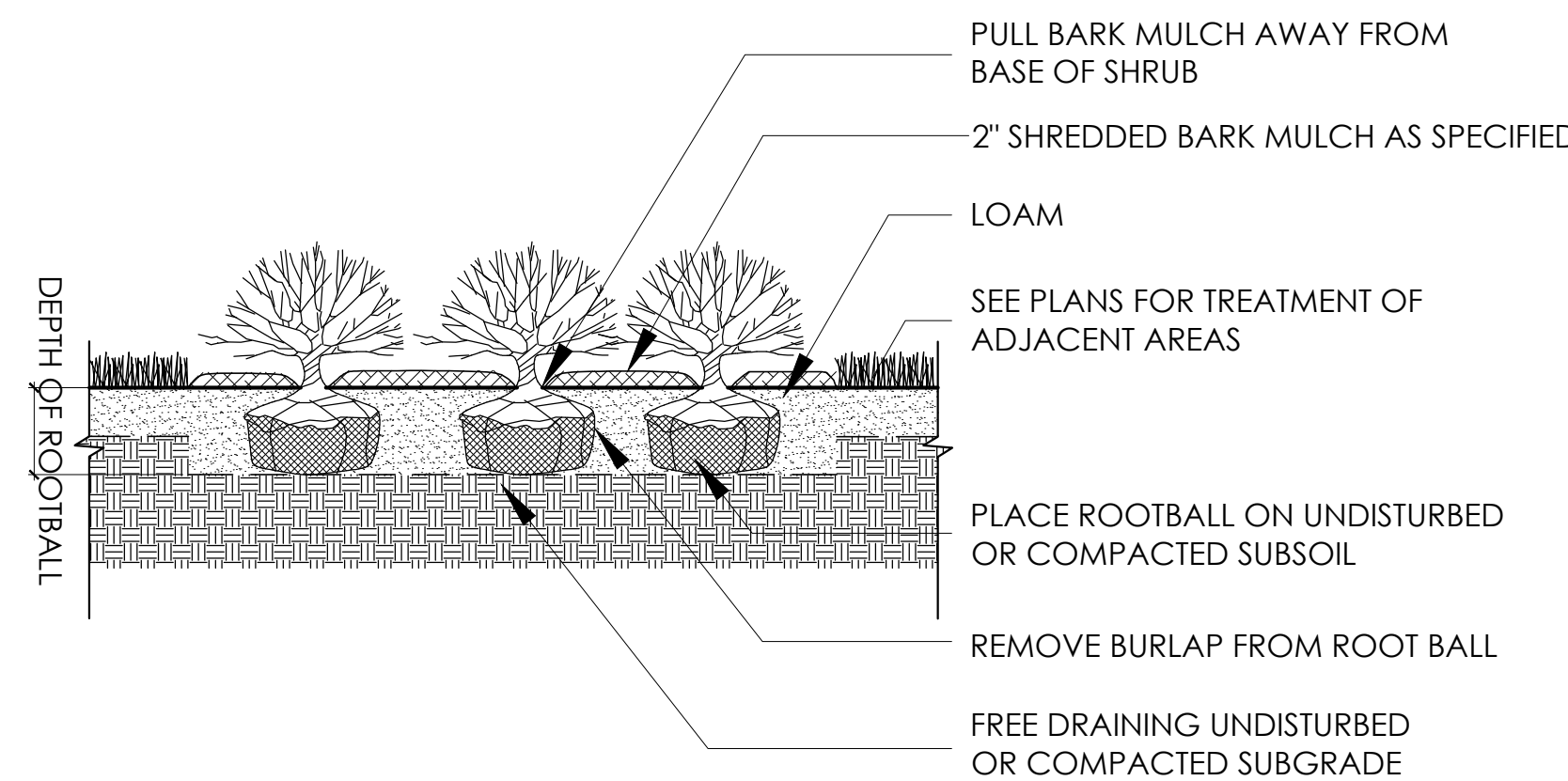
NOTE: 1) SEE PLANTING PLAN FOR PLANT SPACING
2) PLANTS TO BEAR SAME RELATIONSHIP TO FINISHED GRADE AS TO PREVIOUS GRADE

6 GROUND COVER
SCALE: 1" = 1' - 0"



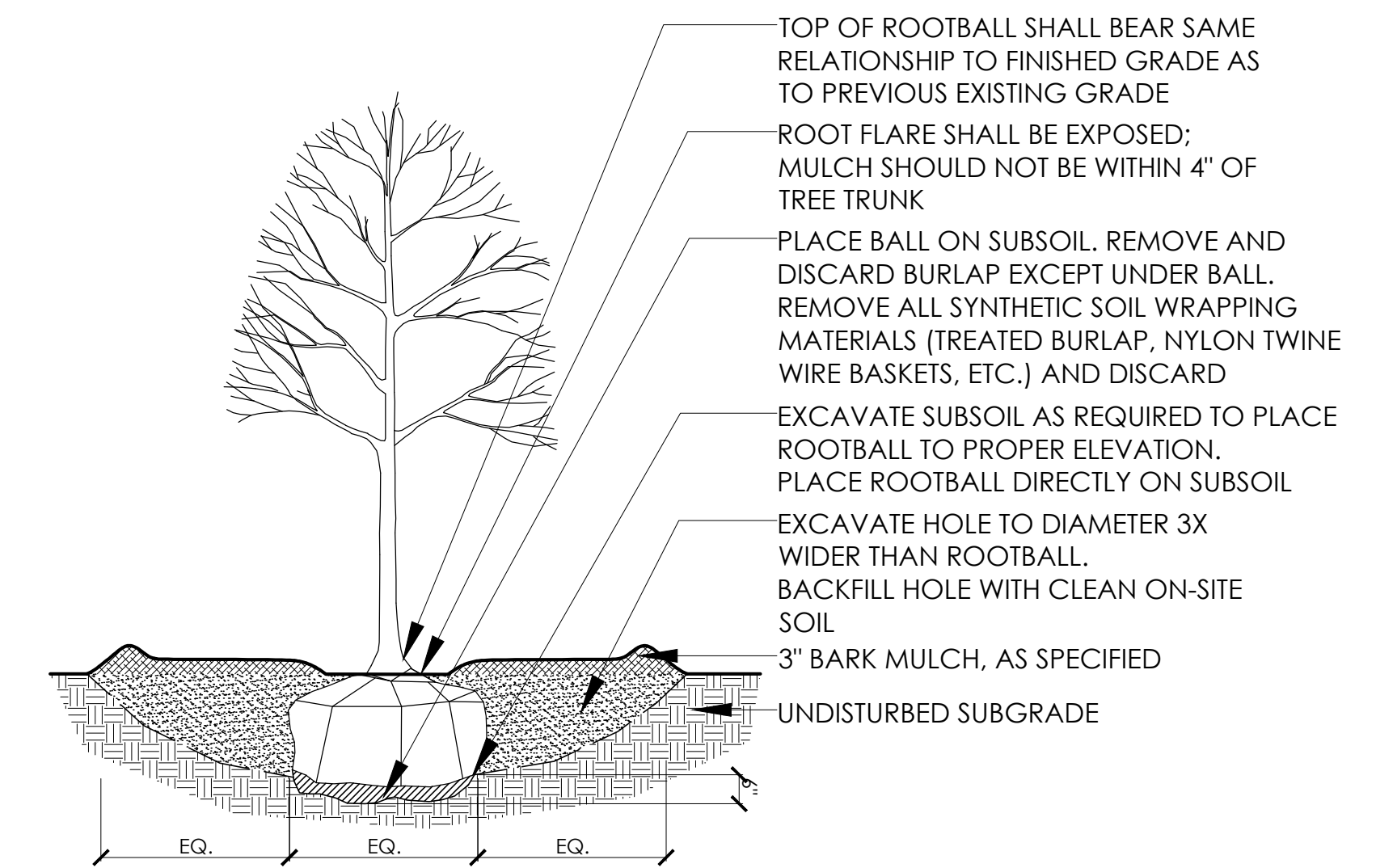
NOTE: 1) SEE PLANTING PLAN FOR PLANT SPACING
2) PLANTS TO BEAR SAME RELATIONSHIP TO FINISHED GRADE AS TO PREVIOUS GRADE

7 PERENNIALS
SCALE: 1" = 1' - 0"

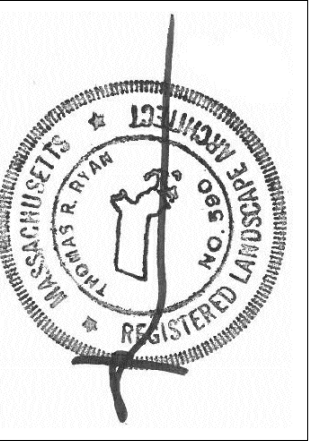


NOTE: 1) SEE PLANTING PLAN FOR PLANT SPACING
2) PLANTS TO BEAR SAME RELATIONSHIP TO FINISHED GRADE AS TO PREVIOUS GRADE

8 SHRUBBERY
SCALE: 3/8" = 1' - 0"



9 TREES
SCALE: 3/8" = 1' - 0"



RYAN ASSOCIATES
LANDSCAPE ARCHITECTURE AND PLANNING
Building 4
5 Elm Street
Wellham, MA 02463
ph: 781.314.0001
www.ryan-assoc.com

5 - 7 ELM STREET
NEWTON, MA

SITE DETAILS
SCALE: AS NOTED

ISSUED	TO	REVIEW AND COORDINATION
1	10.13.14	DRIVEWAY LAYOUT UPDATE
2	04.31.18	
3		
4		
5		

L-4.0