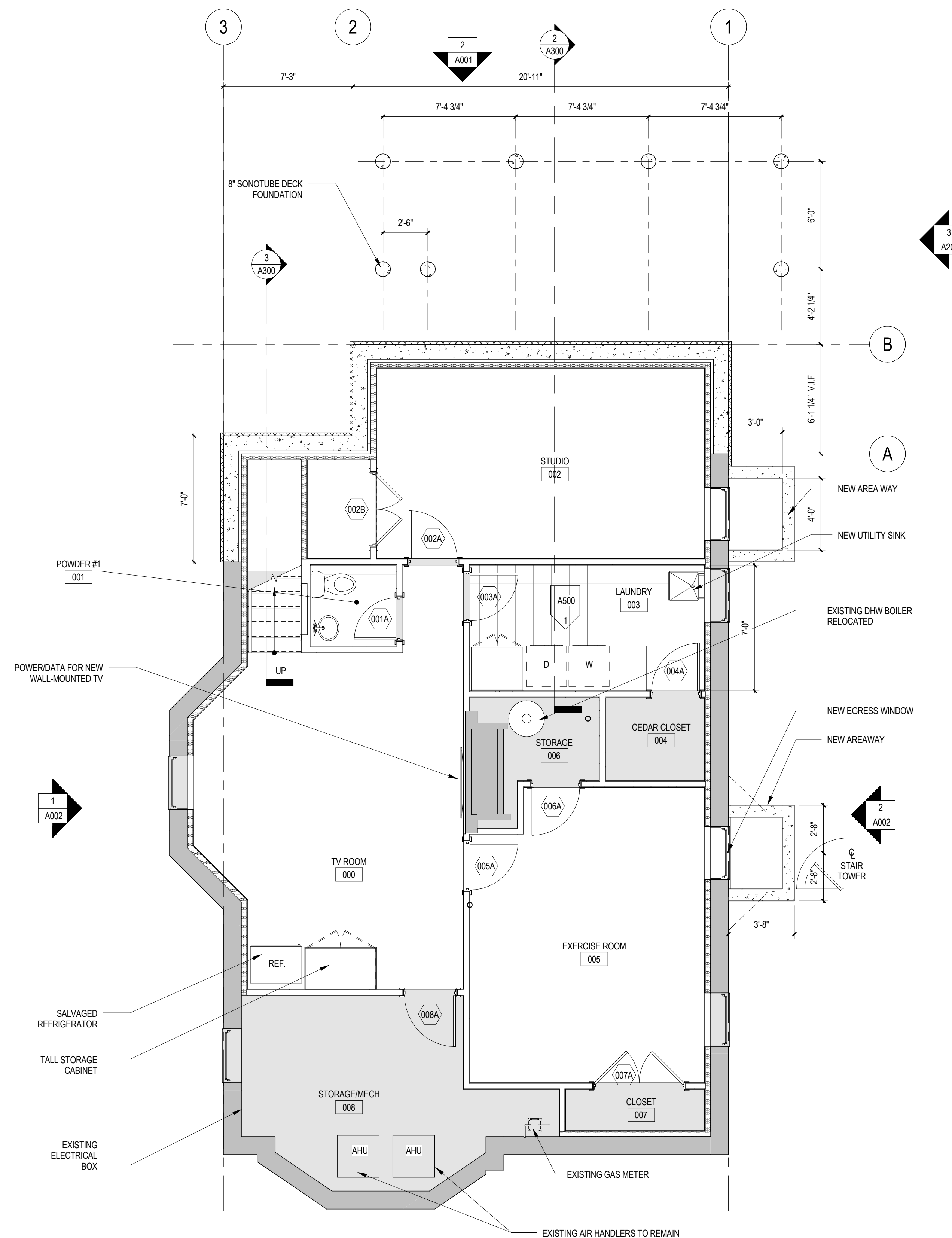


2 GROUND FLOOR PLAN
SCALE: 1/4" = 1'-0"



1 BASEMENT FLOOR PLAN
SCALE: 1/4" = 1'-0"

GENERAL FLOOR PLAN NOTES

- IT IS THE RESPONSIBILITY OF THE CONTRACTOR TO REVIEW EXISTING AND PROPOSED DIMENSIONS AND ALIGNMENTS AND CONFIRM LOCATIONS AND ALIGNMENTS SHOWN CAN BE ACHIEVED. DISCREPANCIES BETWEEN PROPOSED ALIGNMENTS AND LOCATIONS AND EXISTING CONDITIONS MUST BE BROUGHT TO THE ATTENTION OF THE ARCHITECT PRIOR TO INSTALLATION OF THE WORK.
- AS-BUILT DIMENSIONS AND EXISTING CONDITIONS MUST BE FIELD VERIFIED PRIOR TO FABRICATION OF CASEWORK, FIXTURES, FURNISHINGS AND EQUIPMENT TO CONFIRM FIT AND LOCATIONS AS SHOWN ON THE DRAWINGS OR AS DIRECTED BY THE ARCHITECT. DISCREPANCIES MUST BE BROUGHT TO THE ARCHITECTS ATTENTION PRIOR TO ORDERING OR FABRICATING.
- GRID AND GRID DIMENSIONS ARE TO FACE OF FOUNDATION, EXTERIOR FACE OF FRAMING OR AS NOTED.
- EXTERIOR DIMENSIONS ARE TO FACE OF FRAMING AND CENTERLINE OF OPENINGS OR AS NOTED.
- INTERIOR DIMENSIONS ARE TO FINISH FACE OF WALL BOARD FINISH, FINISH EDGE, FINISH OPENING, CENTERLINE OF OPENING AND CENTERLINE OF FIXTURES OR AS NOTED.
- PROVIDE ROUGH OPENINGS PER WINDOW AND DOOR MANUFACTURER RECOMMENDATIONS UNLESS NOTED OR DETAILED OTHERWISE.
- SEE DOOR SCHEDULE FOR DOOR INFORMATION.
- SEE WINDOW SCHEDULE FOR WINDOW INFORMATION.
- SEE FINISH SCHEDULE FOR FINISH INFORMATION.

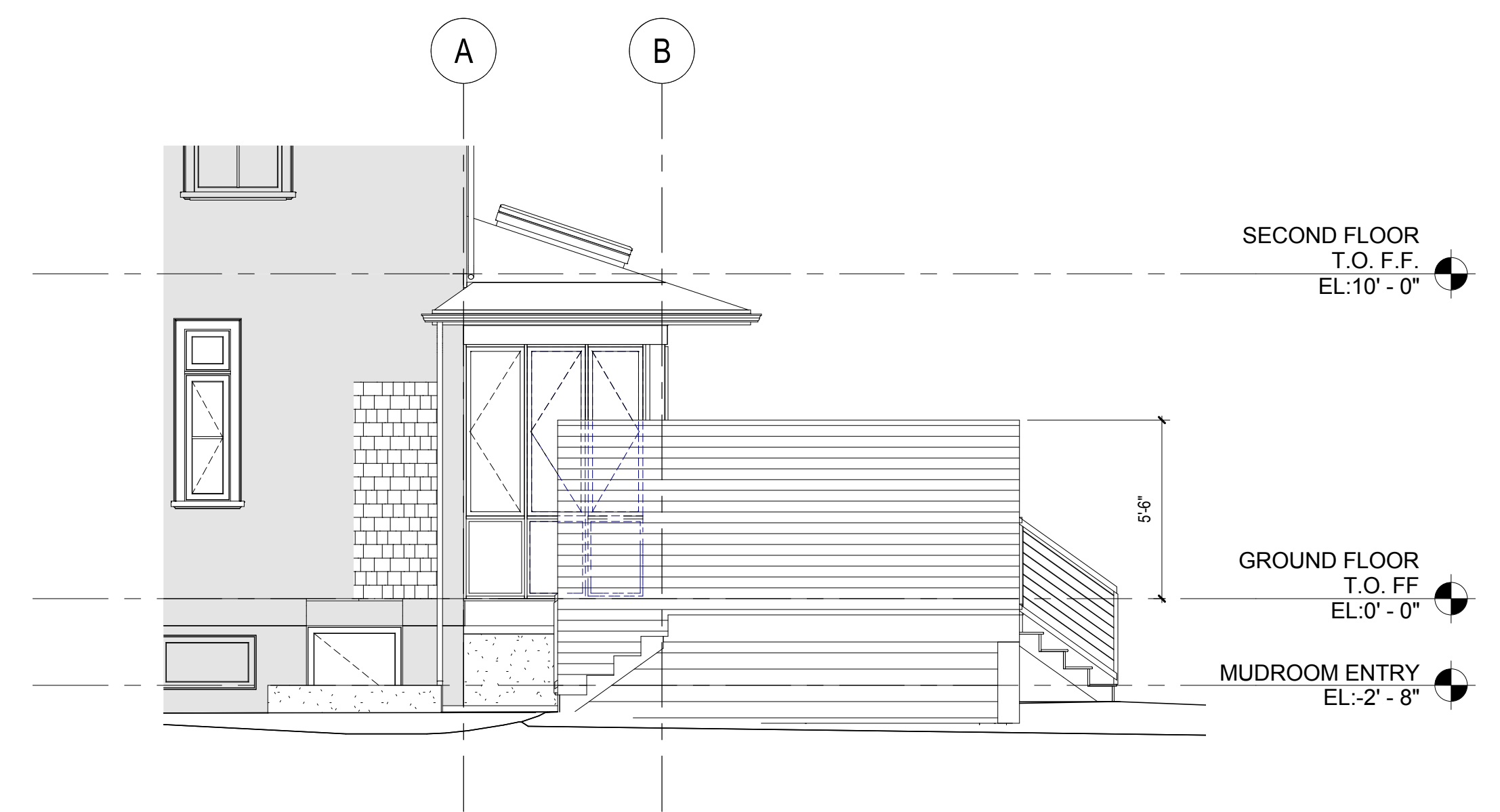
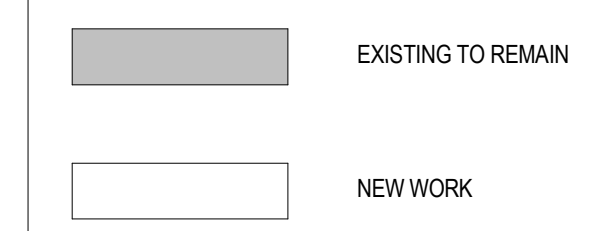
WINDOW SCHEDULE

#	WIDTH	HEIGHT	MANUFACTURER	MODEL	NOTES
000	2' - 11 1/2"	4' - 5 1/2"	PELLA	350 SERIES 3-0/4-6	CASEMENT - EGRESS
001	2' - 11 1/2"	4' - 5 1/2"	PELLA	350 SERIES 3-0/4-6	CASEMENT - EGRESS
005	1' - 5"	1' - 3 1/2"	PELLA	1747	
006	1' - 5"	1' - 3 1/2"	PELLA	1747	
100	1' - 5"	3' - 11"	PELLA	1747	CASEMENT
101	1' - 5"	3' - 11"	PELLA	1747	CASEMENT
102	1' - 9 1/2"	5' - 2 1/2"	PELLA		DIRECT SET CASEMENT UNIT
102B	1' - 9 1/2"	2' - 4 1/2"	PELLA		DIRECT SET FIXED UNIT
103	1' - 9 1/2"	5' - 2 1/2"	PELLA		DIRECT SET CASEMENT UNIT
103B	1' - 9 1/2"	2' - 4 1/2"	PELLA		DIRECT SET FIXED UNIT
104	1' - 8 1/4"	5' - 2 1/2"	PELLA		DIRECT SET CASEMENT UNIT
104B	1' - 8 1/4"	2' - 4 1/2"	PELLA		DIRECT SET FIXED UNIT
105	2' - 1 5/16"	5' - 2 1/2"	PELLA		DIRECT SET CASEMENT UNIT
105B	2' - 1 5/16"	2' - 4 1/2"	PELLA		DIRECT SET FIXED UNIT
106	2' - 0 13/16"	5' - 2 1/2"	PELLA		DIRECT SET CASEMENT UNIT
106B	2' - 0 13/16"	2' - 4 1/2"	PELLA		DIRECT SET FIXED UNIT
107	2' - 0 13/16"	5' - 2 1/2"	PELLA		DIRECT SET CASEMENT UNIT
107B	2' - 0 13/16"	2' - 4 1/2"	PELLA		DIRECT SET FIXED UNIT
108	2' - 0 13/16"	5' - 2 1/2"	PELLA		DIRECT SET CASEMENT UNIT
108B	2' - 0 13/16"	2' - 4 1/2"	PELLA		DIRECT SET FIXED UNIT
109	2' - 1 5/16"	5' - 2 1/2"	PELLA		DIRECT SET CASEMENT UNIT
109B	2' - 1 5/16"	2' - 4 1/2"	PELLA		DIRECT SET FIXED UNIT
110	2' - 10 1/2"	7' - 9"	PELLA		DIRECT SET FRENCH DOOR
111	2' - 5"	4' - 5"	PELLA	2953	DOUBLE HUNG
112	2' - 1"	4' - 5"	PELLA	2553	DOUBLE HUNG
113	2' - 1"	4' - 5"	PELLA	2553	DOUBLE HUNG
123	1' - 9 1/2"	3' - 10 1/4"	VELUX	VCE	FIXED SKYLIGHT
124	1' - 9 1/2"	3' - 10 1/4"	VELUX	VCE	FIXED SKYLIGHT

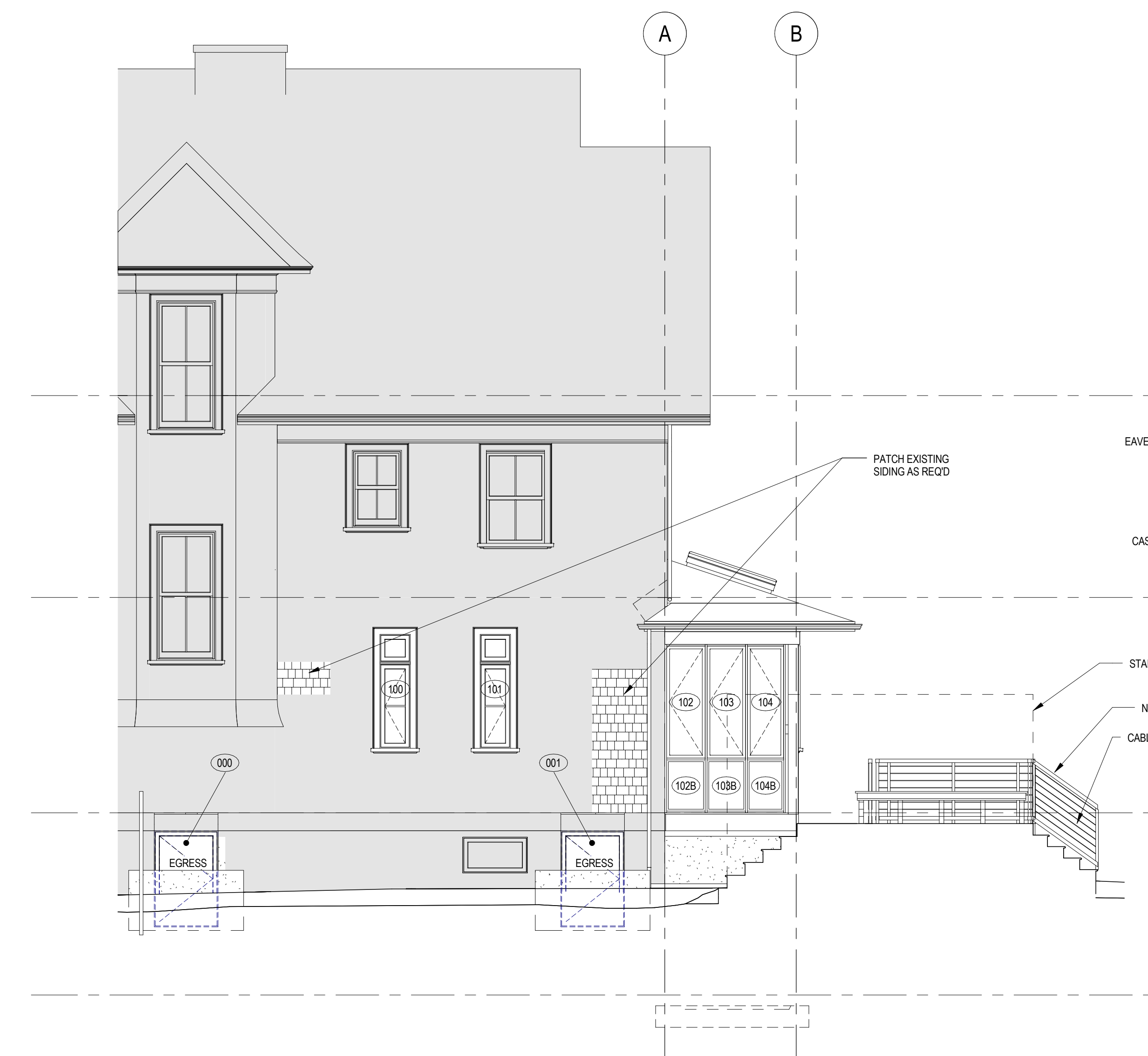
GENERAL ELEVATION NOTES

- GRID AND GRID DIMENSIONS ARE TO FACE OF FOUNDATION, EXTERIOR FACE OF FRAMING OR AS NOTED.
- EXTERIOR DIMENSIONS ARE TO FACE OF FRAMING AND CENTERLINE OF OPENINGS OR AS NOTED.
- PROVIDE ROUGH OPENINGS PER WINDOW AND DOOR MANUFACTURER'S RECOMMENDATIONS UNLESS NOTED OR DETAILED OTHERWISE.
- SEE BUILDING SECTIONS FOR HEADER HEIGHT DIMENSIONS.

ELEVATION KEY



3 PRIVACY WALL ELEVATION
SCALE: 1/4" = 1'-0"



2 EAST ELEVATION
SCALE: 1/4" = 1'-0"



1 NORTH ELEVATION
SCALE: 1/4" = 1'-0"