

GLENSIDE PROPERTIES - REAR LOT

156 Olis Street
Newton, MA

P30314

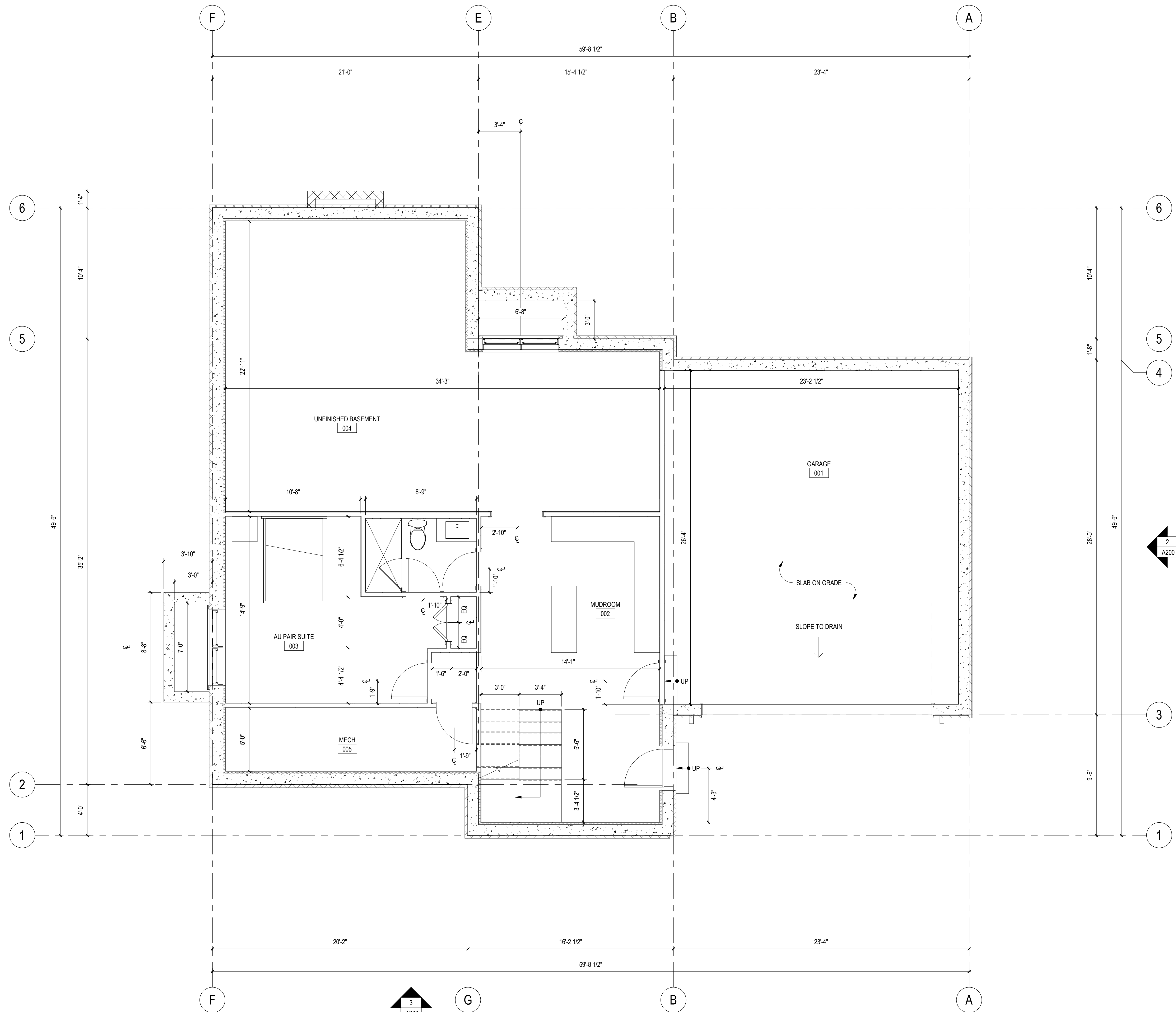
LDa Architecture & Interiors, LLP
222 Third Street, Suite 3212
Cambridge, MA 02142
617 621-1455 fax 617 621-1477
www.LDa-Architects.com

ISSUANCE:
PROGRESS SET

REVISION:

DATE: 2018.06.22
SCALE: 1/4" = 1'-0"
DRAWN: T.J. MJ
CHECKED: TL, TJ

SHEET INFO:
BASEMENT PLAN



GLENSIDE PROPERTIES - REAR LOT

156 Olis Street
Newton, MA

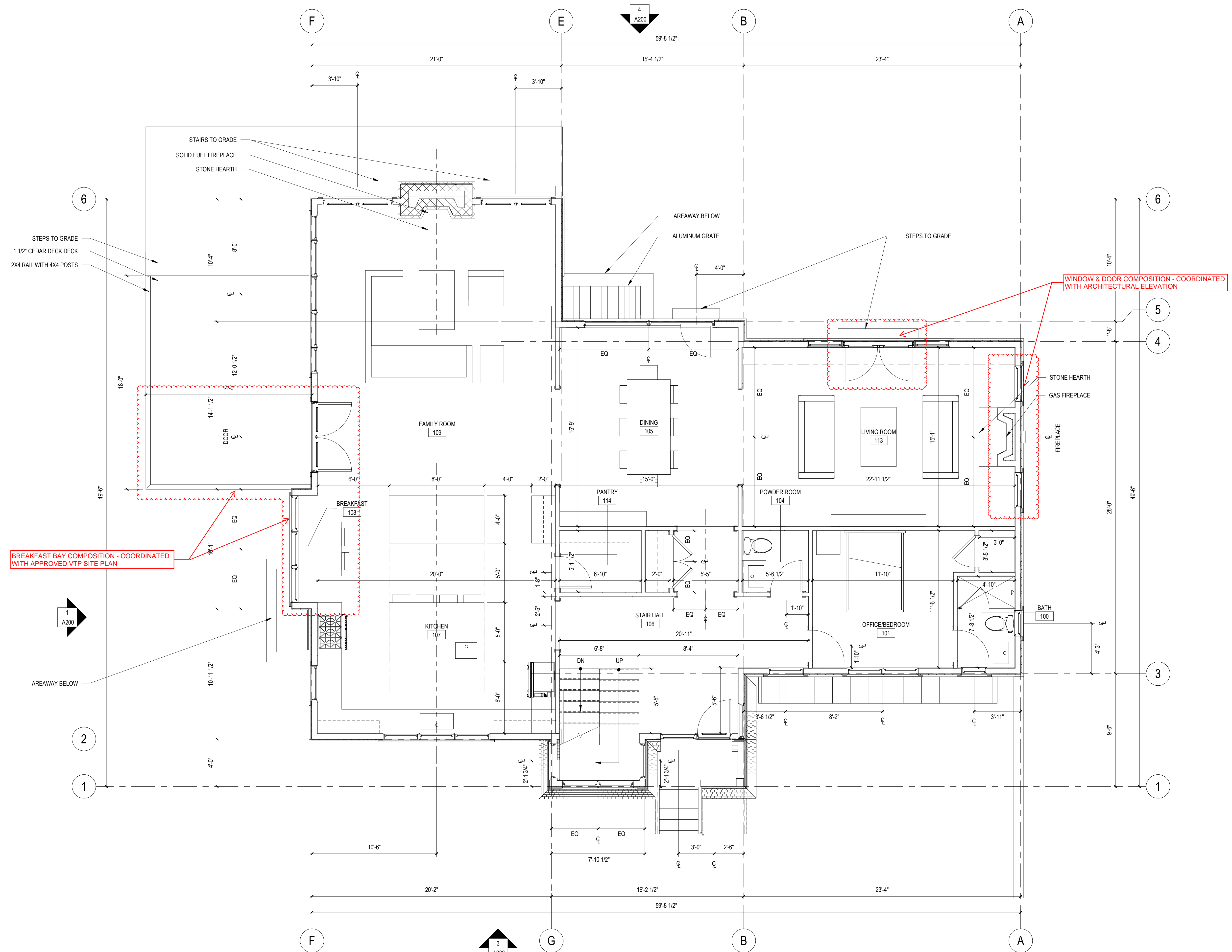
LDA Architecture & Interiors, LLP
222 Third Street, Suite 3212
Cambridge, MA 02142
617 621-1455 fax 617 621-1477
www.LDA-Architects.com

ISSUANCE:
PROGRESS SET

REVISION:

DATE: 2018.06.22
SCALE: 1/4" = 1'-0"
DRAWN: TJ, MJ
CHECKED: TL, TJ

SHEET INFO:
FIRST FLOOR PLAN



GLENSIDE PROPERTIES - REAR LOT

156 Otis Street
Newton, MA

LDa Architecture & Interiors, LLP
222 Third Street, Suite 3212
Cambridge, MA 02142
617 621-1455 fax 617 621-1477
www.LDa-Architects.com

ISSUANCE:
PROGRESS SET

REVISION:

DATE: 2018.06.22
SCALE: 1/4" = 1'-0"
DRAWN: T.J. MJ
CHECKED: TL, TJ

SHEET INFO:
SECOND FLOOR PLAN

