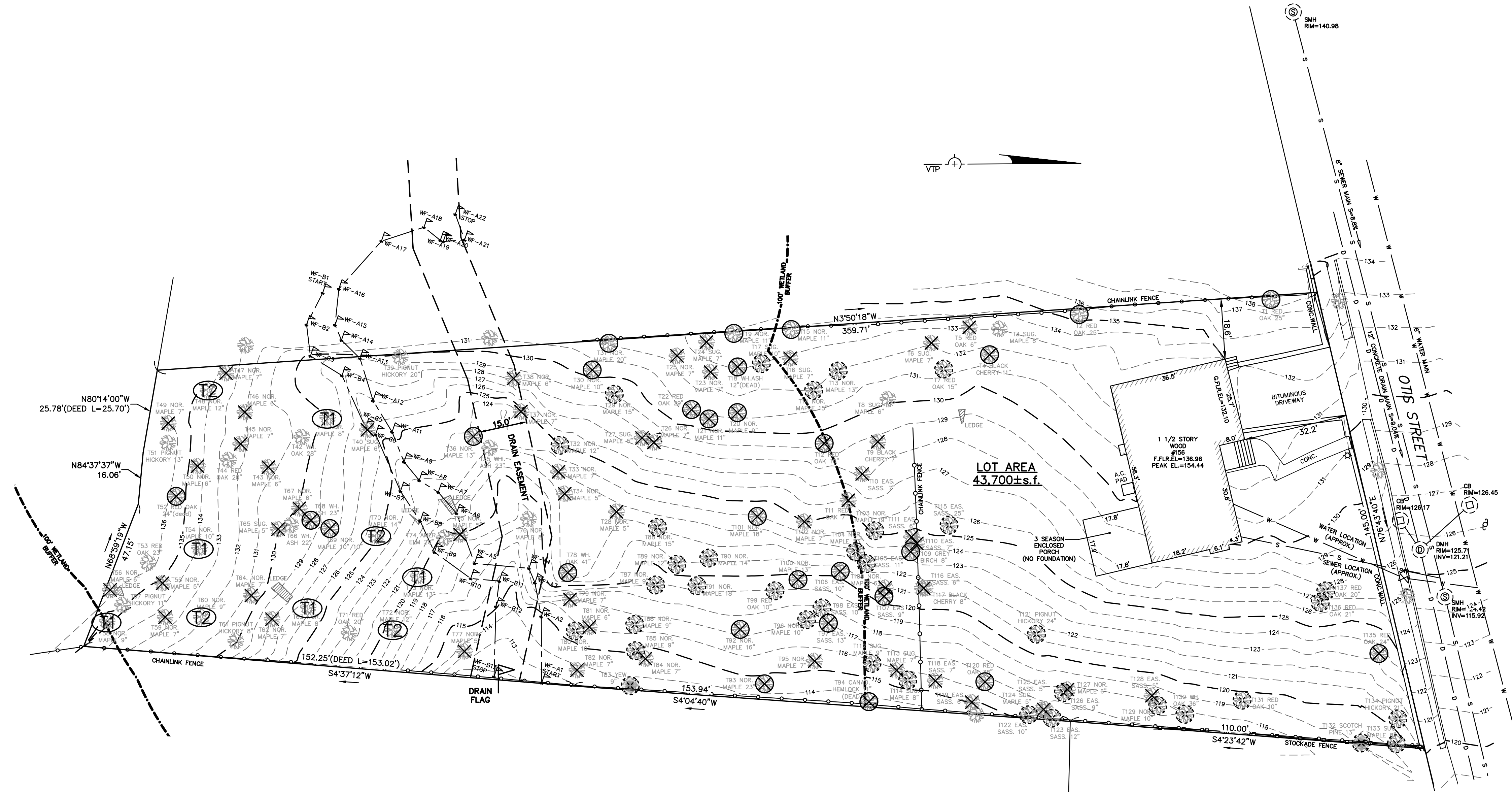


217176_tree removal plan_3_rev4.318.dwg (2-2017)

LEGEND

- BUILDING
- PROPERTY LINE W/ BEARING DISTANCE
- CONTOUR
- STOCKADE FENCE
- CHAINLINK FENCE
- PICKET FENCE
- SEWER LINE
- DRAIN LINE
- WATER LINE
- GAS LINE
- GAS VALVE
- WATER VALVE
- DRAIN MANHOLE
- SEWER MANHOLE
- CATCH BASIN
- UTILITY POLE
- LIGHT POLE
- DECIDUOUS TREE DEC. 22"
- CONIFEROUS TREE CON. 12"
- PROTECT
- REMOVE WITHOUT REPLACEMENT
- REMOVE WITH REPLACEMENT
- REMOVE LESS THAN 8"
- GIRDLING/TREAT YEAR 1/YEAR 2



TREES NOT TO BE REMOVED			
#	SPECIES	DBH	NOTE
T3	SUG. MAPLE	6"	ACTION: NONE
T8	SUG. MAPLE	7"	ACTION: NONE
T35	WH. ASH	23"	OUTSIDE SCOPE
T39	PIGNOT HICKORY	20"	OUTSIDE SCOPE
T42	WH. OAK	28"	OUTSIDE SCOPE
T44	RED OAK	20"	OUTSIDE SCOPE
T51	PIGNOT HICKORY	13"	OUTSIDE SCOPE
T53	RED OAK	23"	OUTSIDE SCOPE
T57	PIGNOT HICKORY	11"	OUTSIDE SCOPE
T61	PIGNOT HICKORY	8"	OUTSIDE SCOPE
T66	WH. ASH	22"	OUTSIDE SCOPE
T71	RED OAK	20"	OUTSIDE SCOPE
T74	AMERICAN ELM	20"	OUTSIDE SCOPE
T76	NOR. MAPLE	8"	OUTSIDE SCOPE
TOTALS	14 TREES	229"	

TREES TO BE GIRDLING/TREATED			
#	SPECIES	DBH	NOTE
T41	NOR. MAPLE	8"	OUTSIDE SCOPE
T48	NOR. MAPLE	12"	OUTSIDE SCOPE
T54	NOR. MAPLE	10"	OUTSIDE SCOPE
T58	NOR. MAPLE	9"	OUTSIDE SCOPE
T60	NOR. MAPLE	9"	OUTSIDE SCOPE
T63	NOR. MAPLE	8"	OUTSIDE SCOPE
T70	NOR. MAPLE	14"	OUTSIDE SCOPE
T72	NOR. MAPLE	12"	OUTSIDE SCOPE
T73	NOR. MAPLE	13"	OUTSIDE SCOPE
TOTALS	9 TREES	95"	

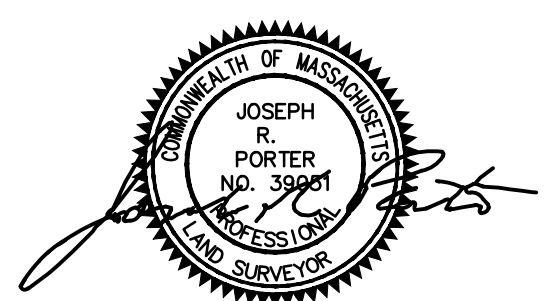
TREES TO BE REMOVED UNDER 8"			
#	SPECIES	DBH	NOTE
T5	RED OAK	6"	DEAD
T6	SUG. MAPLE	7"	
T9	BLACK CHERRY	7"	POOR HEALTH
T10	EAS. SASS.	7"	
T11	RED OAK	7"	DEAD
T16	SUG. MAPLE	7"	
T23	NOR. MAPLE	7"	
T24	SUG. MAPLE	7"	
T25	NOR. MAPLE	7"	
T26	NOR. MAPLE	7"	
T27	SUG. MAPLE	5"	
T28	NOR. MAPLE	5"	
T33	NOR. MAPLE	7"	
T34	NOR. MAPLE	5"	
T37	NOR. MAPLE	7"	
T38	NOR. MAPLE	6"	
T40	SUG. MAPLE	6"	
T43	NOR. MAPLE	6"	
T45	NOR. MAPLE	7"	
T46	NOR. MAPLE	6"	
T47	NOR. MAPLE	7"	
T49	NOR. MAPLE	7"	
T50	NOR. MAPLE	6"	
T55	NOR. MAPLE	5"	
T56	NOR. MAPLE	6"	
T59	NOR. MAPLE	7"	
T62	NOR. MAPLE	7"	
T64	NOR. MAPLE	7"	
T65	SUG. MAPLE	5"	
T67	NOR. MAPLE	6"	
T75	NOR. MAPLE	5"	
T77	NOR. MAPLE	5"	
T79	NOR. MAPLE	7"	
T81	NOR. MAPLE	6"	
T82	NOR. MAPLE	7"	
T84	NOR. MAPLE	7"	
T85	NOR. MAPLE	7"	
T102	NOR. MAPLE	7"	
T108	NOR. MAPLE	6"	
T110	EAS. SASS.	7"	
T111	EAS. SASS.	6"	POOR HEALTH
T113	SUG. MAPLE	7"	
T116	EAS. SASS.	6"	
T117	BLACK CHERRY	8"	
T118	BLACK CHERRY	7"	
T119	EAS. SASS.	6"	
T124	SUG. MAPLE	5"	
T125	EAS. SASS.	5"	
T127	NOR. MAPLE	6"	
T128	EAS. SASS.	5"	
TOTALS	50 TREES	317"	

TREES TO BE REMOVED WITH REPLACEMENT			
#	SPECIES	DBH	NOTE
T7	RED OAK	15"	
T13	NOR. MAPLE	13"	
T14	NOR. MAPLE	15"	
T17	SUG. MAPLE	10"	
T29	NOR. MAPLE	15"	FAIR CONDITION
T32	NOR. MAPLE	12"	OUTSIDE SCOPE
T80	NOR. MAPLE	18"	
T83	YEW	9"	
T85	NOR. MAPLE	9"	
T86	NOR. MAPLE	9"	
T87	NOR. MAPLE	9"	
T88	NOR. MAPLE	15"	
T89	NOR. MAPLE	12"	
T90	NOR. MAPLE	14"	
T91	NOR. MAPLE	18"	
T96	NOR. MAPLE	8"	
T98	EAS. SASS.	10"	
T99	RED OAK	10"	
T103	NOR. MAPLE	19"	
T104	NOR. MAPLE	23"	POOR HEALTH
T105	SUG. MAPLE	11"	
T112	SUG. MAPLE	9"	
T114	NOR. MAPLE	8"	
T115	EAS. SASS.	25"	FAIR CONDITION
T121	PIGNOT HICKORY	24"	FAIR CONDITION
T122	EAS. SASS.	10"	
T123	EAS. SASS.	12"	
T126	EAS. SASS.	9"	
T129	NOR. MAPLE	10"	
T130	WH. OAK	36"	
T131	RED OAK	10"	
T132	SCOTCH PINE	13"	
T133	SUG. MAPLE	8"	
T134	PIGNOT HICKORY	21"	
T136	RED OAK	21"	
T137	RED OAK	20"	
TOTALS	36 TREES	510"	

TREES TO BE REMOVED WITHOUT REPLACEMENT			
#	SPECIES	DIA	NOTE
T4	BLACK CHERRY	11"	POOR HEALTH
T12	RED OAK	10"	
T18	WH. ASH	12"	DEAD
T20	NOR. MAPLE	9"	POOR HEALTH
T21	NOR. MAPLE	11"	POOR HEALTH
T22	RED OAK	29"	POOR HEALTH
T30	NOR. MAPLE	10"	DEAD
T36	NOR. MAPLE	13"	POOR HEALTH
T37	RED OAK	24"	DEAD
T68	WH. ASH	23"	DEAD
T69	NOR. MAPLE 10"	10"	POOR HEALTH
T78	WH. OAK	41"	POOR HEALTH
T92	NOR. MAPLE	16"	POOR HEALTH
T93	NOR. MAPLE	23"	POOR HEALTH
T94	CANAD. HEMLOCK	11"	DEAD
T97	EAS. SASS.	13"	POOR HEALTH
T100	NOR. MAPLE	13"	POOR HEALTH
T101	NOR. MAPLE	18"	POOR HEALTH
T106	EAS. SASS.	10"	POOR HEALTH
T107	EAS. SASS.	9"	POOR HEALTH
T109	GREY BIRCH	8"	DEAD
T120	RED OAK	38"	POOR HEALTH
T135	RED OAK	24"	FAIR CONDITION
TOTALS	23 TREES	386"	

TREES TO BE PROTECTED			
#	SPECIES	DBH	NOTE
T1	RED OAK	25"	
T2	RED OAK	25"	
T15	NOR. MAPLE	11"	
T19	NOR. MAPLE	11"	
T31	NOR. MAPLE	20"	
TOTALS	5 TREES	92"	

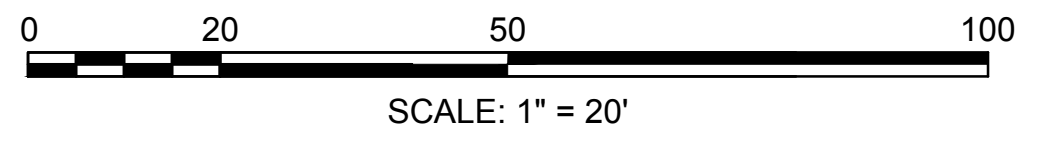
TREE SUMMARY		
NAME	QTY.	
BLACK CHERRY	1	
CANAD. HEMLOCK	1	CANADIAN HEMLOCK
EAS. SASS.	15	EASTERN SASSAFRAS
GREY BIRCH	1	
NOR. MAPLE	69	NORWAY MAPLE
NOR. SPRUCE	1	NORWAY SPRICE
PIGNOT HICKORY	6	
RED OAK	17	
SCOTCH PINE	1	
SUG. MAPLE	14	SUGAR MAPLE
WH. ASH	4	WHITE ASH
WH. OAK	3	WHITE OAK
YEW	1	



TREE REMOVAL PLAN
NEWTON, MASSACHUSETTS
 SHOWING EXISTING CONDITIONS AT
 #156 OTIS STREET
 SCALE: 1in.=20ft. DATE: FEBRUARY 26, 2018
 REVISIONS: APRIL 3, 2018
 PROJECT: 217176



LAND SURVEYORS - CIVIL ENGINEERS. 132
 ADAMS STREET 2ND FLOOR SUITE 3
 NEWTON, MA 02458
 (617) 332-8271
 SHEET 1 OF 1



SCALE: 1" = 20'