




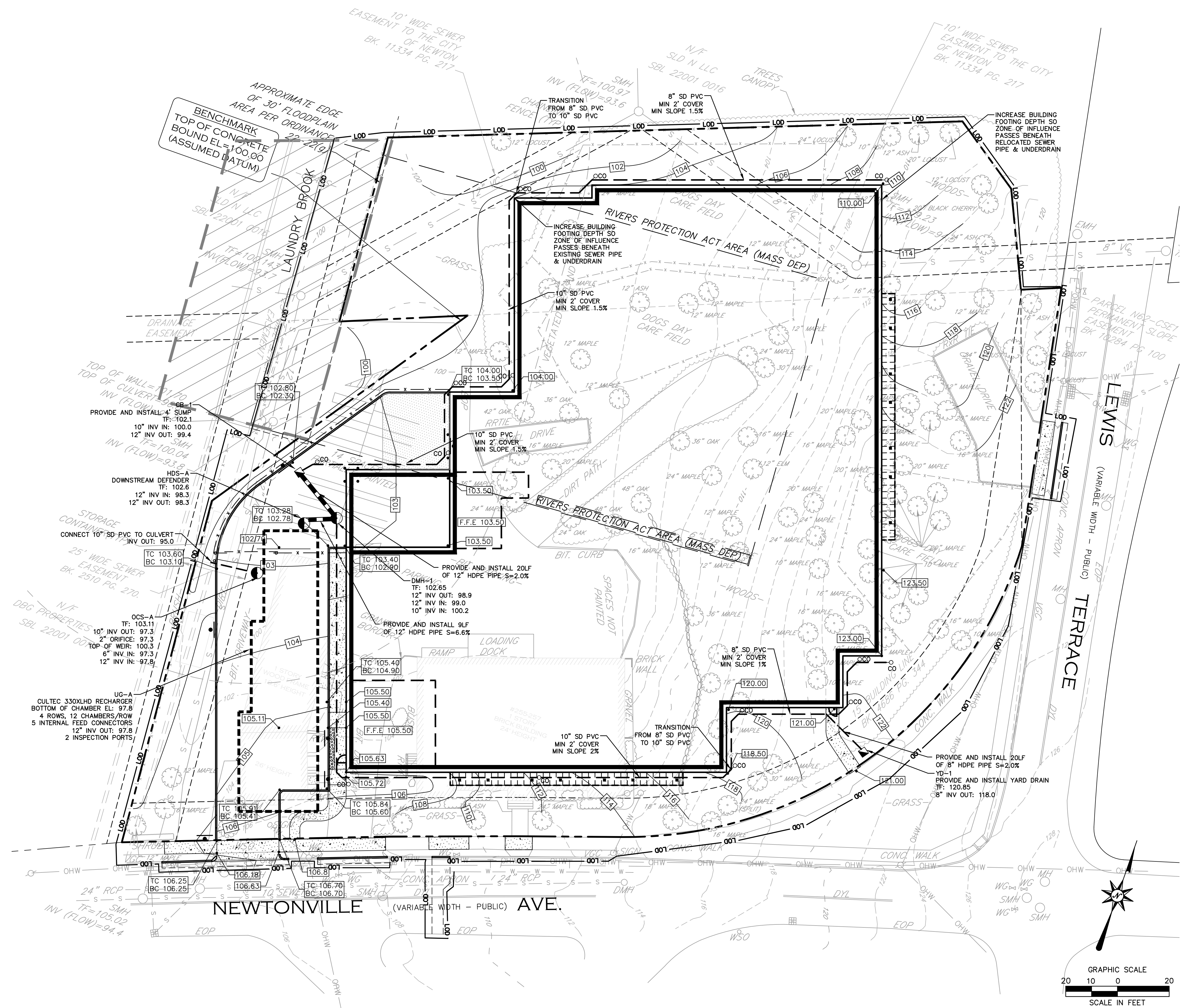


# LEGEND

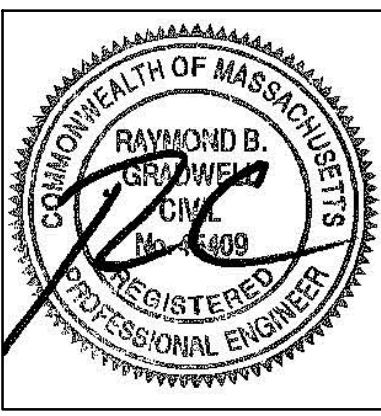
-  PROPOSED STORMWATER PIPE
-  PROPOSED CATCH BASIN
-  PROPOSED STORMWATER STRUCTURE
-  EXISTING CONTOUR
-  PROPOSED CONTOUR

NOTE: ON SITE CATCH BASINS SHALL BE INSTALLED WITH HOODED OUTLETS

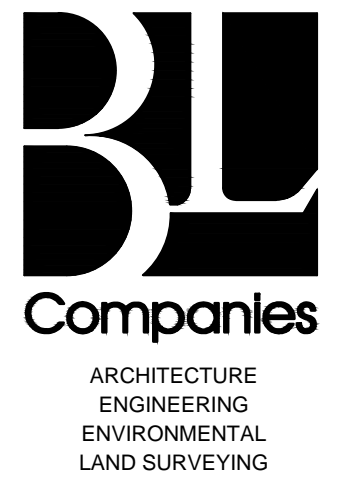


REFER TO SHEET GN-1 FOR GENERAL NOTES AND GRADING AND DRAINAGE NOTES

FOR PERMITTING PURPOSES ONLY  
NOT RELEASED FOR CONSTRUCTION



3/2/2016, 4:00 PM, G:\0000\150278101\150278101\DWG\GD-1.dwg, 2016, 24:36



355 Research Parkway  
Meriden, CT 06450  
(203) 630-1406  
(203) 630-2615 Fax

## PROPOSED SELF STORAGE FACILITY 255-257 NEWTONVILLE AVENUE NEWTON, MASSACHUSETTS

REV. NO.	DATE	DESCRIPTION
1.	2/19/2016	CONSERVATION COMMISSION COMMENTS
2.	2/22/2016	ENGINEERING COMMENTS
3.	2/29/2016	CONSERVATION COMMISSION COMMENTS

Designed: A.B.U.  
Drawn: A.B.U.  
Checked: A.B.U.  
Approved: A.B.U.  
Scale: 1"=20'  
Project No: 1502781  
Date: 2/5/2016  
CAD File: GD150278101

Title: GRADING AND DRAINAGE PLAN  
Sheet No.

GD-1

Xref (G): B0150278101; X0150278101; X0150278102; X0150278103; X0150278104