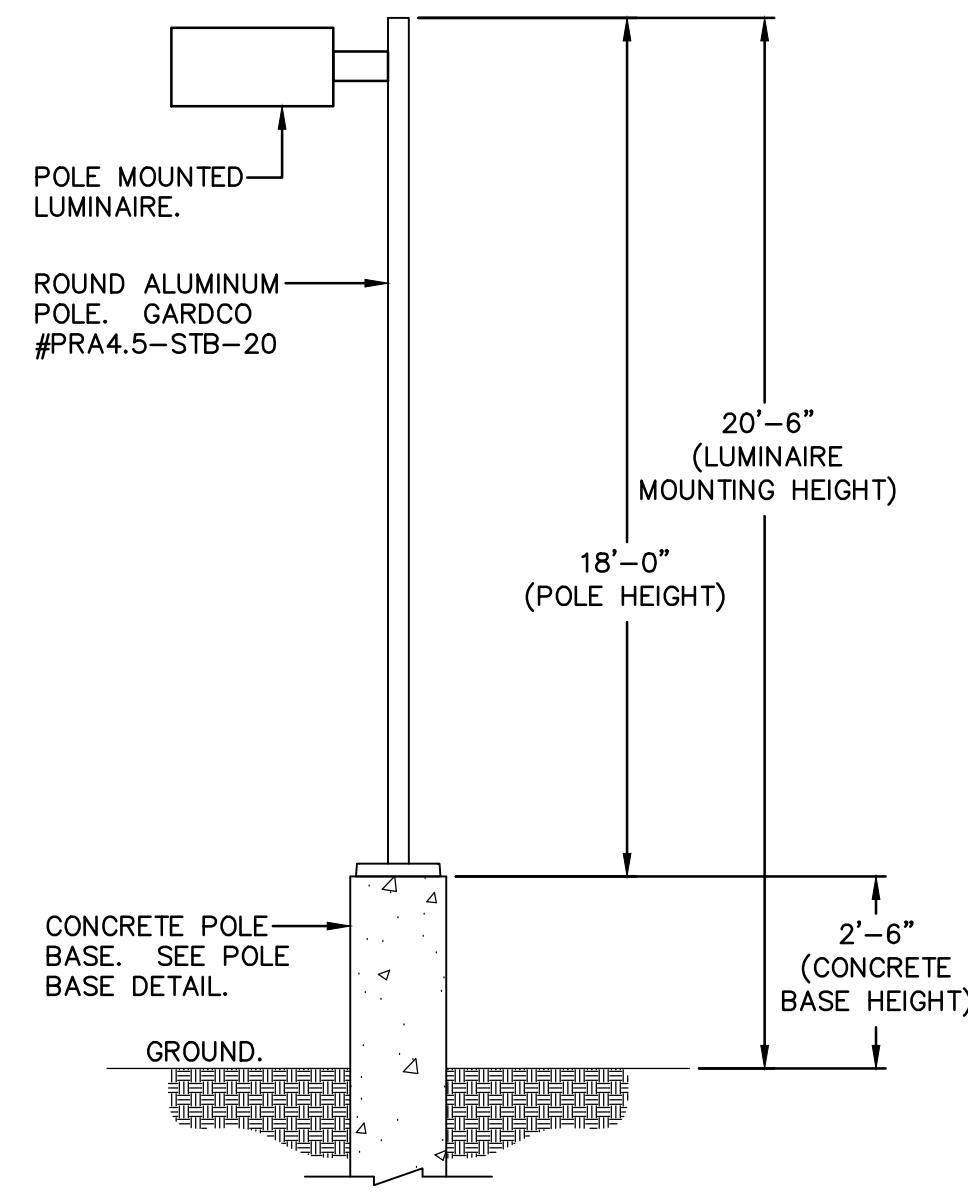
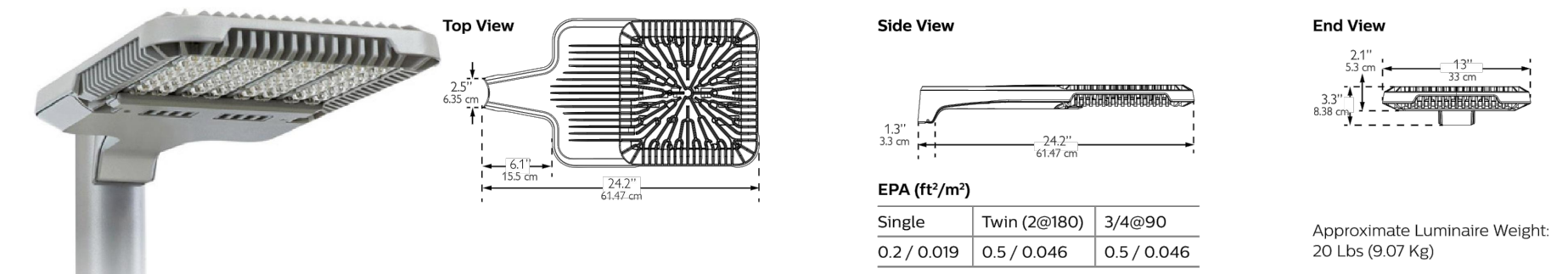
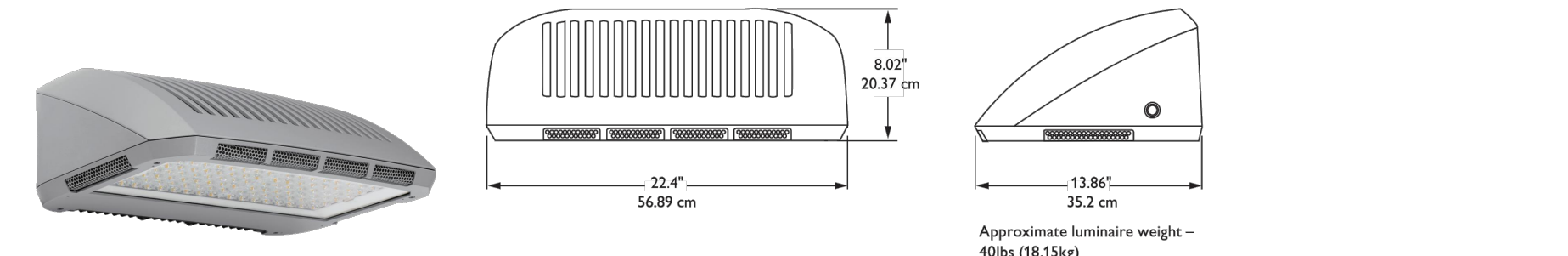
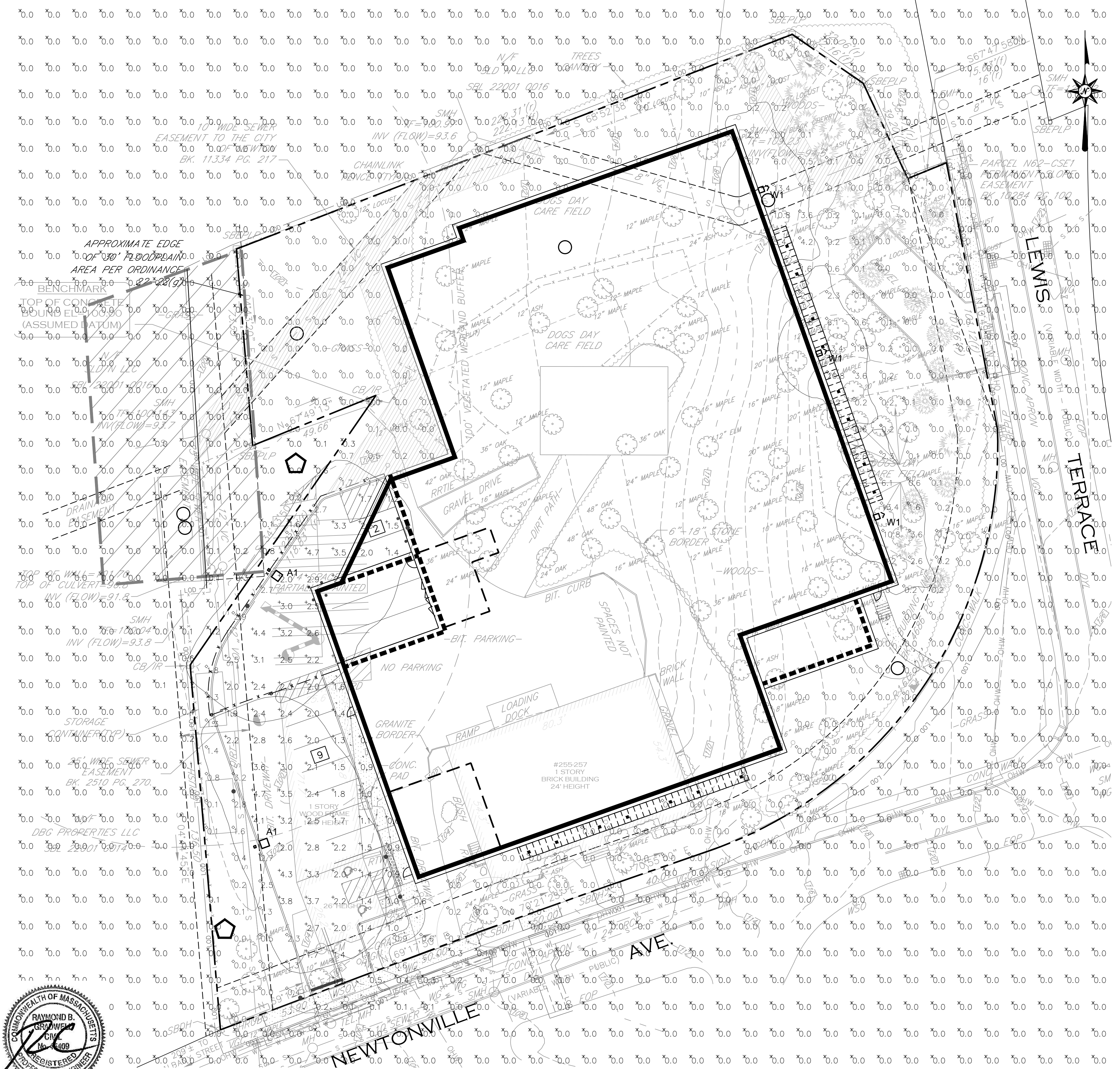


Luminaire Schedule											
Symbol	Label	Quantity	Manufacturer	Catalog Number	Description	Lamp	Number Lamps	File Name	Lumens Per Lamp	Light Loss Factor	Wattage
□	A1	2	PHILIPS GARDCO	ECF-3-215LA-641A-NW-IS	ECOFORM	(1) LIGHT ARRAY OF 80 LEDs DRIVEN AT 1050mA	1	ECF-3-215LA-641A-NW-ISies	15270.06	0.85	210.9
△	W1	3	PHILIPS GARDCO	161-2-110LA-6453-NW	161 SCONCE WITH TYPE 2 OPTIC AT 530mA	(2) LEDtype 32 LUXEON R NW	1	161-2-110LA-6453-NWies	9565.241	0.85	106.8

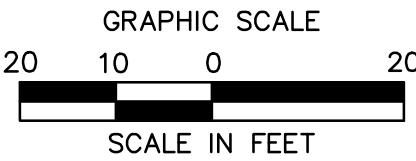
Statistics							
Description	Symbol	Avg	Max	Min	Max/Min	Avg/Min	Avg/Max
Parking Area	+	2.2 fc	4.7 fc	0.6 fc	7.8:1	3.7:1	0.5:1
Spill Area Landscape	◇	0.2 fc	3.2 fc	0.0 fc	N/A	N/A	0.1:1
Spill Area	x	0.0 fc	1.6 fc	0.0 fc	N/A	N/A	0.0:1

LIGHTING NOTES:

1. ALL WORK SHALL BE DONE IN STRICT ACCORDANCE WITH ALL REQUIREMENTS OF ANY LOCAL APPLICABLE CODES OR ORDINANCES, PUBLIC UTILITY COMPANY REGULATIONS, STATE CODE, AND NATIONAL ELECTRICAL CODE WITH INTERIM AMENDMENTS THERETO.
2. ALL MATERIALS SHALL CONFORM TO THE LATEST ISSUE OF ALL APPLICABLE STANDARDS AS ESTABLISHED BY EEL, NEMA, ASTM, IPCEA, NATIONAL BOARD OF FIRE UNDERWRITERS, AND UNDERWRITERS LABORATORIES INC.
3. THE CONTRACTOR SHALL TEST THE LIGHTING AFTER INSTALLATION WITH THE DEVELOPER/OWNER, AND PROVIDE TO DEVELOPER/OWNER WARRANTY AND MAINTENANCE INFORMATION. THE CONTRACTOR SHALL MAKE ADJUSTMENTS AND/OR MODIFICATIONS AS REQUIRED BY THE DEVELOPER/OWNER TO OBTAIN EVEN LIGHT DISTRIBUTION.
4. CONTRACTOR SHALL LEAVE ENTIRE ELECTRICAL SYSTEM INSTALLED BY THE CONTRACTOR IN PROPER WORKING CONDITION AND REPLACE WITHOUT ADDITIONAL CHARGE ALL WORK OR MATERIALS WHICH MAY DEVELOP DEFECTS WITHIN A PERIOD OF ONE (1) YEAR FROM DATE OF FINAL ACCEPTANCE BY THE ENGINEER.
5. THE CONTRACTOR SHALL SUBMIT SHOP DRAWINGS OF ALL PRODUCTS, BASES AND CONDUITS TO SITE ENGINEER FOR REVIEW AND APPROVAL PRIOR TO DELIVERY OF MATERIAL TO SITE. ALLOW A MINIMUM OF 14 WORKING DAYS FOR REVIEW. IF ALTERNATIVE LIGHTING IS PROPOSED SUBMIT A PHOTOMETRIC FOOT-CANDLE LAYOUT ALONG WITH ANNUAL MAINTENANCE REQUIREMENTS AND ANTICIPATED COSTS.
6. LIGHTS ARE DESIGNED TO PROVIDE EVEN LEVELS OF ILLUMINATION AND AVOID GLARE ONTO NEIGHBORING PROPERTIES. FINAL DESIGN MAY VARY PENDING MANUFACTURER'S RECOMMENDATIONS.
7. ALL LIGHTING CONTROLS, PANELS, CIRCUIT BREAKERS ETC. ARE TO BE PROVIDED UNDER A SEPARATE CONTRACT BY BUILDING CONTRACTOR. CAREFUL COORDINATION IS REQUIRED BETWEEN SITE CONTRACTOR AND BUILDING CONTRACTOR TO PROVIDE A COMPLETE INSTALLATION FOR SITE LIGHTING.
8. THE CONTRACTOR WILL PROVIDE AND INSTALL ALL MATERIAL NECESSARY TO COMPLETE THE SITE LIGHTING SYSTEM INCLUDING BUT NOT LIMITED TO CONDUIT, BASES, ANCHOR BOLTS, POLES SITE LIGHTS AND LAMPS. THE CONTRACTOR WILL COORDINATE WIRING AND POWERING OF LIGHTS WITH OWNER, ARCHITECT, AND BUILDING CONTRACTOR IF DIFFERENT FROM THE SITE CONTRACTOR.
9. ALL LIGHTS TO BE AS LISTED IN SCHEDULE OR APPROVED EQUIVALENT. LIGHTS SHALL BE MOUNTED ON SQUARE STRAIGHT STEEL POLES ATOP 36" HIGH CONCRETE BASES THAT ARE SET 2' (CLEAR) BEHIND CURBS. ILLUMINATION ANALYSIS MODELED USING LIGHTING FIXTURES LISTED IN SCHEDULE.
10. LIGHT POLES, AND BRACKETS TO BE AS SHOWN ON DETAILS OR APPROVED EQUIVALENT.
11. WIRE AND CABLE SHALL BE COPPER AND CONFORM TO THE FOLLOWING NEC TYPE THHN/THWN SOLID FOR NO. 12 AND NO. 10, NEC TYPE THHN/THWN STRANDED FOR NO. 8 AND LARGER. RIGID STEEL CONDUIT SHALL BE GALVANIZED. FITTINGS SHALL BE CAST FERROUS MATERIAL WITH A CADMIUM OR ZINC PLATED FINISH.
12. ALL EQUIPMENT SHALL BE GROUNDED AND BONDED IN ACCORDANCE TO NEC.



**FOR PERMITTING PURPOSES ONLY
 NOT RELEASED FOR CONSTRUCTION**



ARCHITECTURE
 ENGINEERING
 ENVIRONMENTAL
 LAND SURVEYING

355 Research Parkway
 Meriden, CT 06450
 (203) 630-1406
 (203) 630-2615 Fax

PROPOSED SELF STORAGE FACILITY
 255-257 NEWTONVILLE AVENUE
 NEWTON, MASSACHUSETTS

No.	Date	REVISIONS	Desc.	Conservation Commission Comments
1.	2/19/2016	1	CONSERVATION COMMISSION COMMENTS	
2.	2/22/2016	2	ENGINEERING COMMENTS	
3.	2/25/2016	3	CONSERVATION COMMISSION COMMENTS	
4.	4/20/2016	4	LAND USE HEARING COMMENTS	
5.	5/19/2016	5	COMMUNITY COMMENTS	

Designed: R.Z.
 Drawn: R.Z.
 Checked:
 Approved:
 Scale: 1"=20'
 Project No.: 1502781
 Date: 2/5/2016
 CAD File: LP150278101

Title: **SITE LIGHTING PLAN**

Sheet No.

LP-1

Xref (G): XC150278101; XC150278102; XL150278101; XL150278102; XE150278101; XZ150278101