

HABITAT ENHANCEMENT AREAS PLANT SCHEDULE

ZONE A - 6,530 SF

QTY	BOTANICAL NAME	COMMON NAME	SIZE	TYPE
75	<i>Ceanothus americanus</i>	NEW JERSEY TEA	2'-3'	SHRUB
75	<i>Comptonia peregrina</i>	SWEETFERN	2'-3'	SHRUB
8	<i>Abies balsamea</i>	BALSAM FIR	3'-4'	TREE
150	<i>Vaccinium angustifolium</i>	LOWBUSH BLUEBERRY	12"-18"	SHRUB
8	<i>Nyssa sylvatica</i>	BLACK OAK	4'-6'	TREE
8	<i>Prunus virginiana</i>	CHOCHEERRY	4'-6'	TREE
8	<i>Quercus rubra</i>	NORTHERN RED OAK	4'-6'	TREE
75	<i>Viburnum lentago</i>	NANNYBERRY	3'-4'	SHRUB

GROUND COVER: CONSERVATION/WILDLIFE MIX

ZONE B - 10,325 SF

QTY	BOTANICAL NAME	COMMON NAME	SIZE	TYPE
75	<i>Ceanothus americanus</i>	NEW JERSEY TEA	2'-3'	SHRUB
75	<i>Comptonia peregrina</i>	SWEETFERN	2'-3'	SHRUB
25	<i>Cornus florida</i>	FLOWERING DOGWOOD	4'-6'	TREE
75	<i>Cornus racemosa</i>	GRAY DOGWOOD	3'-4'	SHRUB
75	<i>Corylus americana</i>	AMERICAN HAZELNUT	3'-4'	SHRUB
75	<i>Hamamelis virginiana</i>	COMMON WITCHHAZEL	3'-4'	SHRUB
75	<i>Kalmia latifolia</i>	MOUNTAIN LAUREL	3'-4'	SHRUB
25	<i>Ostrya virginiana</i>	EASTERN HOPHORNBEAM	4'-6'	TREE
75	<i>Viburnum acerifolium</i>	MAPLE LEAF VIBURNUM	3'-4'	SHRUB

GROUND COVER: CONSERVATION/WILDLIFE MIX

ZONE C - 2,699 SF

QTY	BOTANICAL NAME	COMMON NAME	SIZE	TYPE
40	<i>Cornus racemosa</i>	GRAY DOGWOOD	3'-4'	SHRUB
40	<i>Hamamelis virginiana</i>	COMMON WITCHHAZEL	3'-4'	SHRUB
20	<i>Juniperus virginiana</i>	EASTERN RED CEDAR	4'-6'	TREE (1)
40	<i>Morale pensylvanica</i>	BAYBERRY	3'-4'	SHRUB
40	<i>Rhus typhina</i>	STAGHORN SUMAC	3'-4'	SHRUB

GROUND COVER: ROADSIDE SEED MIX

ZONE D - 2,693 SF

QTY	BOTANICAL NAME	COMMON NAME	SIZE	TYPE
125	<i>Vaccinium angustifolium</i>	LOWBUSH BLUEBERRY	12"-18"	SHRUB
50	<i>Morale pensylvanica</i>	BAYBERRY	3'-4'	SHRUB
50	<i>Viburnum dentatum</i>	ARROWWOOD VIBURNUM	3'-4'	SHRUB

GROUND COVER: CONSERVATION/WILDLIFE MIX

HABITAT ENHANCEMENT AREA NOTES

- HABITAT ENHANCEMENT AREAS SHALL BE AMENDED WITH AT LEAST 4" OF PLANTING SOIL. REFER TO GENERAL LANDSCAPE NOTES ON SHEET LL-2 FOR INFORMATION REGARDING PLANTING SOIL.
- PLANTS SHALL BE NATIVE SPECIES FROM NEW ENGLAND SOURCES TO THE EXTENT FEASIBLE. CULTIVARS OR HYBRIDS ARE NOT ACCEPTABLE.
- AVERAGE DENSITY OF TREES SHALL BE 15-20 FEET O.C.
- AVERAGE DENSITY OF SHRUBS SHALL BE IN GROUPINGS 4-6 FEET O.C.
- SHRUB SPECIES SHALL BE CLUSTERED IN GROUPS OF 5-7. CLUSTERS SHALL BE ALLOCATED IN NATURAL ARRANGEMENT WITHIN HABITAT ENHANCEMENT AREAS.
- FINAL PLANT & SEED MIX LOCATIONS SHALL BE DETERMINED IN THE FIELD BY LANDSCAPE ARCHITECT OR OWNER'S REPRESENTATIVE.
- SUBSTITUTIONS SHALL BE REVIEWED AND APPROVED BY LANDSCAPE ARCHITECT OR OWNER'S REPRESENTATIVE.
- PLANTINGS SHALL BE MONITORED BY LANDSCAPE ARCHITECT OR OWNER'S REPRESENTATIVE FOR 3 YEARS. REMEDIAL MEASURES MAY BE REQUIRED AND SHALL BE IMPLEMENTED AS DIRECTED BY LANDSCAPE ARCHITECT OR OWNER'S REPRESENTATIVE.

SEED MIXES

- LAWN SEEDING MIXTURE:
 15% PERENNIAL RYEGRASS (BLEND OF 3 IMPROVED HYBRIDS)
 25% FINE LEAF OR CREEPING FESCUE (BLEND OF 3 IMPROVED HYBRIDS)
 60% KENTUCKY BLUEGRASS (BLEND OF 3 IMPROVED HYBRIDS)
 SEEDING RATE: 5 LBS/1,000 S.F.
- CONSERVATION/WILDLIFE MIX
 NEW ENGLAND WETLAND PLANTS (NEWP)
 SEEDING RATE: 25 LBS/ACRE OR 1 LB/1,750 S.F.
 SPECIES: VIRGINIA WILD RYE (ELYMUS VIRGINICUS), LITTLE BLUESTEM (SCHIZACHYRIUM SCOPARIUM), BIG BLUESTEM (ANDROPOGON GERARDII), CREEPING RED FESCUE (FESTUCA RUBRA), SWITCH GRASS (PANICUM VIRGATUM), PARTRIDGE PEA (CHAMAECRISTA FASCICULATA), DEER TONGUE (PANICUM CLANDESTINUM), INDIAN GRASS (SORGHASTRUM NUTANS), OX EYE SUNFLOWER (HELIOPSIS HELIANTHOIDES), COMMON MILKWEED (ASCLEPIAS SYRIACA), SPOTTED JOE PYE WEED (EUPATORIUM MACULATUM), GRASS LEAVED GOLDENROD (EUTHAMIA GRAMINIFOLIA), BLUE VERVAIN (VERBENA HASTATA), NEW ENGLAND ASTER (ASTER NOVAE-ANGLIAE), EARLY GOLDENROD (SOLIDAGO JUNCEA).
- ROADSIDE SEED MIX (NEW ENGLAND ROADSIDE MATRIX UPLAND SEED MIX)
 NEW ENGLAND WETLAND PLANTS (NEWP)
 SEEDING RATE: 35 LBS/ACRE OR 1 LB/1,250 S.F.
 SPECIES:
 GRASSES
 VIRGINIA WILD RYE (ELYMUS VIRGINICUS), LITTLE BLUESTEM (SCHIZACHYRIUM SCOPARIUM), CREEPING RED FESCUE (FESTUCA RUBRA), BIG BLUESTEM (ANDROPOGON GERARDII), INDIAN GRASS (SORGHASTRUM NUTANS), SWITCH GRASS (PANICUM VIRGATUM)
 WILDFLOWERS
 PARTRIDGE PEA (CHAMAECRISTA FASCICULATA), BUTTERFLY MILKWEED (ASCLEPIAS TUBEROSA), GOLDEN ALEXANDERS (ZIZIA AUREA), SMOOTH BLUE ASTER (ASTER LAEVIS), BUSH CLOVER (LESPEDEZA CAPITATA), PURPLE JOE PYE WEED (EUPATORIUM PURPUREUM), WILD BERGAMOT (MONARDA FISTULOSA), GREEN HEADED CONFLOWER (RUDBECKIA LACINIATA), GRASS LEAVED GOLDENROD (EUTHAMIA GRAMINIFOLIA), NEW ENGLAND ASTER (ASTER NOVAE-ANGLIAE), EARLY GOLDENROD (SOLIDAGO JUNCEA)
 SHRUBS
 RED-OSIERDOGWOOD (CORNUS SERICEA), STAGHORN SUMAC (RHUS TYPHINA), WITCH HAZEL (HAMAMELIS VIRGINIANA), BLACK CHERRY (PRUNUS SEROTINA)

LANDSCAPE PLANT SCHEDULE

TREES

KEY	QUANTITY	BOTANICAL NAME	COMMON NAME	ROOT	SIZE	COMMENTS
AR	2	<i>Acer rubrum</i> 'Red Sunset'	RED SUNSET RED MAPLE	B&B	3'-3 1/2" CAL.	UNIFORM, WELL DEV. 7' MIN. BRANCHING HT.
PG	5	<i>Picea glauca</i>	WHITE SPRUCE	B&B	8'-10' HT.	UNIFORM, WELL DEV.
PS	3	<i>Prunus serotina</i> 'Columaria'	COLUMNAR SARGENT CHERRY	B&B	2'-2 1/2" CAL.	UNIFORM, WELL DEV.
QR	2	<i>Quercus rubra</i>	RED OAK	B&B	3'-3 1/2" CAL.	UNIFORM, WELL DEV. 7' MIN. BRANCHING HT.

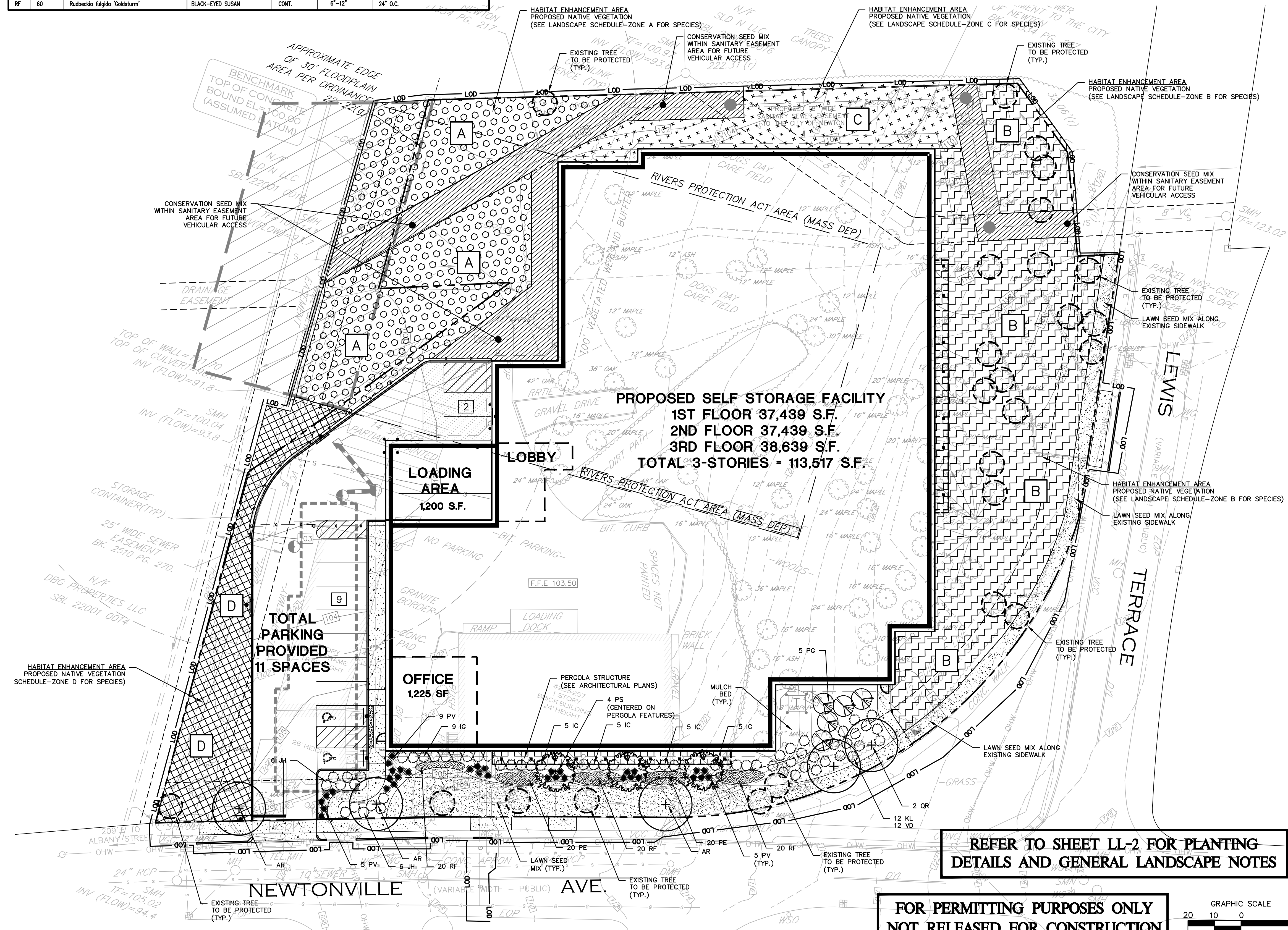
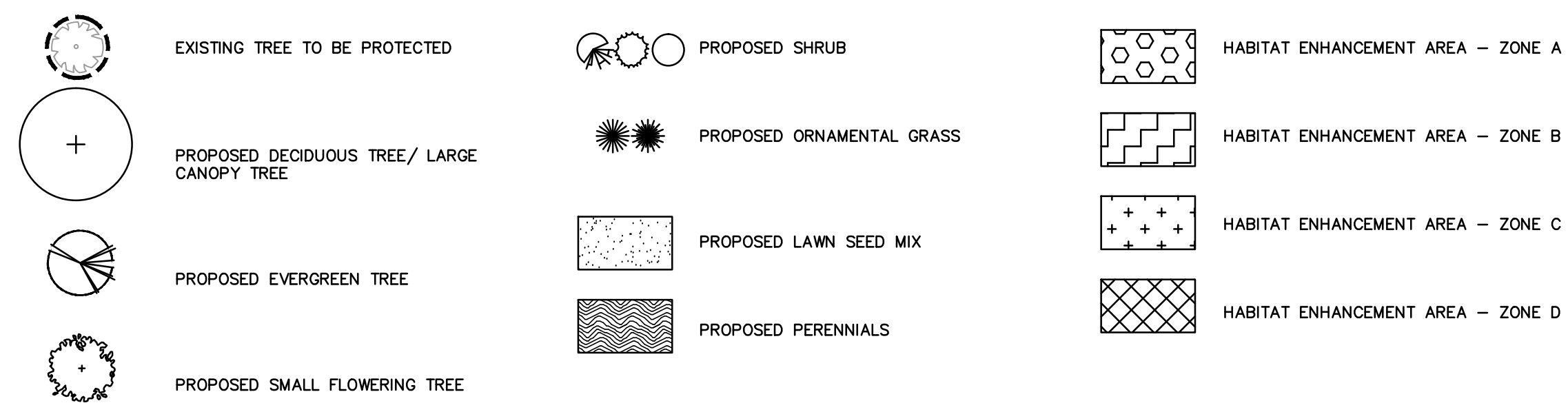
SHRUBS

KEY	QUANTITY	BOTANICAL NAME	COMMON NAME	ROOT	SIZE	COMMENTS
CD	XX	<i>Cornus alba</i> 'Bohale'	IVORY HALO DOGWOOD	CONT.	24"-30"	UNIFORM, WELL DEV. 4' O.C.
IC	20	<i>Ilex crenata</i> 'Hetzl'	HETZLI JAPANESE HOLLY	CONT.	42"-48"	UNIFORM, WELL DEV. 5' O.C.
IG	9	<i>Ilex glabra</i> 'Shamrock'	SHAMROCK INKBERRY	CONT.	24"-30"	UNIFORM, WELL DEV. 4' O.C.
JH	12	<i>Juniperus horizontalis</i> 'Bar Harbor'	BAR HARBOR JUNIPER	CONT.	18"-24"	UNIFORM, WELL DEV. 4' O.C.
KL	12	<i>Kalmia latifolia</i>	MOUNTAIN LAUREL	CONT.	18"-24"	UNIFORM, WELL DEV. 4' O.C.
VD	12	<i>Viburnum dentatum</i>	ARROWWOOD VIBURNUM	CONT.	42"-48"	UNIFORM, WELL DEV. 5' O.C.

PERENNIALS AND ORNAMENTAL GRASSES

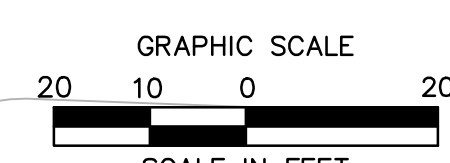
KEY	QUANTITY	BOTANICAL NAME	COMMON NAME	ROOT	SIZE	COMMENTS
PE	40	<i>Perovskia atriplicifolia</i> 'Little Spire'	RUSSIAN SAGE	CONT.	6"-12"	24" O.C.
PV	34	<i>Panicum virgatum</i> 'Heavy Metal'	SWITCHGRASS	CONT.	6"-12"	36" O.C.
RF	60	<i>Rudbeckia fulgida</i> 'Goldsturm'	BLACK-EYED SUSAN	CONT.	6"-12"	24" O.C.

LANDSCAPE KEY



REFER TO SHEET LL-2 FOR PLANTING DETAILS AND GENERAL LANDSCAPE NOTES

**FOR PERMITTING PURPOSES ONLY
NOT RELEASED FOR CONSTRUCTION**



ARCHITECTURE
ENGINEERING
ENVIRONMENTAL
LAND SURVEYING

355 Research Parkway
Meriden, CT 06450
(203) 630-1406
(203) 630-2615 Fax

PROPOSED SELF STORAGE FACILITY
255-257 NEWTONVILLE AVENUE
NEWTON, MASSACHUSETTS

REVISIONS	No.	Date	DESCRIPTION	COMMISSION COMMENTS
1	1	2/19/2016	CONSERVATION	COMMISSION COMMENTS
2	2	2/22/2016	ENGINEERING	COMMISSION COMMENTS
3	3	2/25/2016	CONSERVATION	COMMISSION COMMENTS

Designed: W.E.V.
 Drawn: W.E.V.
 Checked: W.E.V.
 Approved: W.E.V.
 Scale: 1"=20'
 Project No: 1502781
 Date: 2/5/2016
 CAD File: LL150278101

Title: **LANDSCAPE PLAN**

Sheet No: **LL-1**