

REVISIONS

No.	Date	Description
1.	2/19/2016	CONSERVATION COMMISSION COMMENTS
2.	2/22/2016	ENGINEERING COMMENTS
3.	2/25/2016	CONSERVATION COMMISSION COMMENTS

Designed A.B.U.  
Drawn A.B.U.  
Checked  
Approved  
Scale 1"=20'  
Project No. 1502781  
Date 2/5/2016  
CAD File: EC150278101B

Title: **SEDIMENTATION AND EROSION CONTROL PLAN - PHASE 2**  
Sheet No.

**EROSION CONTROL LEGEND**

CONTROL MEASURE	ILLUSTRATION
INLET PROTECTION	
SILT FENCE / SYNTHETIC FILTER BARRIER	
ROCK CONSTRUCTION ENTRANCE	
CONTRACT LIMIT LINE EQUALS LIMIT OF DISTURBANCE	
STOCKPILE AREA	
TREE PROTECTION	

**SOIL TYPES**

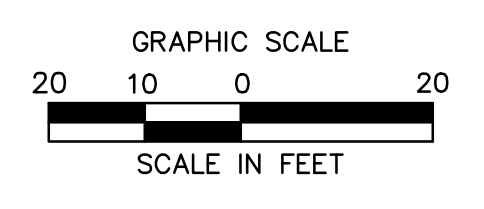
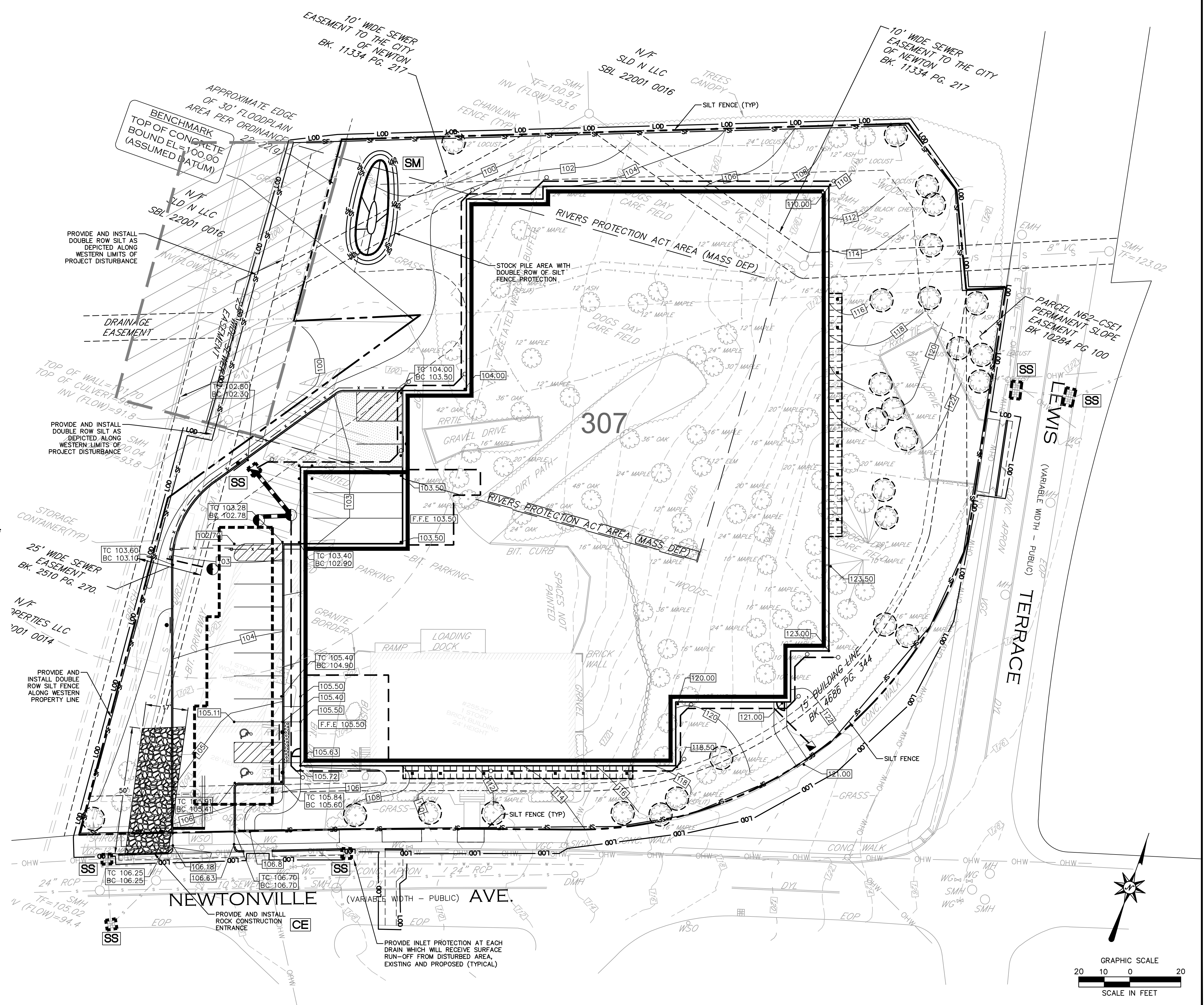
URBAN LAND  
SOIL CLASS "D"

**307**

- OPERATION AND MAINTENANCE OF SEDIMENTATION AND EROSION CONTROL MEASURES
- SILTATION FENCE
    - ALL SILTATION FENCES SHALL BE INSPECTED AS A MINIMUM WEEKLY OR AFTER EACH RAINFALL. ALL DETERIORATED FABRIC AND DAMAGED POSTS SHALL BE REPLACED AND PROPERLY REPOSITIONED IN ACCORDANCE WITH THIS PLAN.
    - SEDIMENT DEPOSITS SHALL BE REMOVED FROM BEHIND THE FENCE WHEN THEY EXCEED A HEIGHT OF ONE FOOT.
  - EROSION AND SEDIMENT CONTROL PLAN
    - HAY BALE FILTERS WILL BE INSTALLED AT ALL CULVERT OUTLETS IF CULVERT OUTLETS ARE APPLICABLE TO THIS PROJECT AND SILTATION FENCE INSTALLED ALONG THE TOE OF ALL CRITICAL CUT AND FILL SLOPES.
    - CULVERT DISCHARGE AREAS WILL BE PROTECTED WITH RIP RAP CHANNELS; ENERGY DISSIPATORS WILL BE INSTALLED AS SHOWN ON THESE PLANS AND AS NECESSARY.
    - CATCH BASINS WILL BE PROTECTED WITH HAY BALE FILTERS, SILT SACKS, SILTATION FENCE, OR OTHER INLET PROTECTION DEVICES PER DETAILS, THROUGHOUT THE CONSTRUCTION PERIOD AND UNTIL ALL DISTURBED AREAS ARE THOROUGHLY STABILIZED.
    - ALL EROSION AND SEDIMENT CONTROL MEASURES WILL BE INSTALLED IN ACCORDANCE WITH THE STANDARDS AND SPECIFICATIONS OF THE MASSACHUSETTS EROSION AND SEDIMENT CONTROL GUIDELINES FOR URBAN AND SUBURBAN AREAS.
    - EROSION AND SEDIMENT CONTROL MEASURES WILL BE INSTALLED PRIOR TO DEMOLITION AND/OR CONSTRUCTION WHENEVER POSSIBLE.
    - ALL CONTROL MEASURES WILL BE MAINTAINED IN EFFECTIVE CONDITION THROUGHOUT THE DEMOLITION AND CONSTRUCTION PERIOD.
    - ADDITIONAL CONTROL MEASURES WILL BE INSTALLED DURING THE CONSTRUCTION PERIOD, IF NECESSARY OR REQUIRED OR AS DIRECTED BY THE CIVIL ENGINEER OR BY LOCAL GOVERNING OFFICIALS.
    - SEDIMENT REMOVED FROM EROSION CONTROL STRUCTURES WILL BE DISPOSED IN A MANNER WHICH IS CONSISTENT WITH THE INTENT AND REQUIREMENTS OF THE EROSION CONTROL PLANS, NOTES, AND DETAILS.
    - THE OWNERS CONTRACTOR IS ASSIGNED THE RESPONSIBILITY FOR IMPLEMENTING THIS SEDIMENTATION AND EROSION CONTROL PLAN. THIS RESPONSIBILITY INCLUDES THE INSTALLATION AND MAINTENANCE OF CONTROL MEASURES, INFORMING ALL PARTIES ENGAGED ON THE CONSTRUCTION SITE OF THE REQUIREMENTS AND OBJECTIVES OF THE PLAN, NOTIFICATION OF THE CONSERVATION COMMISSION OF ANY TRANSFER OF THIS RESPONSIBILITY AND FOR CONVEYING A COPY OF THE SEDIMENTATION AND EROSION CONTROL PLAN IF THE TITLE TO THE LAND IS TRANSFERRED.

**CONTRACTOR INSPECTION SCHEDULE**

INSPECTION TYPE	INSPECTION DATE	CONTRACTOR INITIALS	TOWN INSPECTOR INITIALS
INITIAL INSPECTION PRIOR TO PLAN APPROVAL			
EROSION CONTROL INSPECTION AFTER SITE CLEARING			
EROSION CONTROL INSPECTION AFTER ROUGH GRADING			
EROSION CONTROL INSPECTION AFTER FINAL GRADING			
BURY INSPECTION PRIOR TO BACKFILLING UNDERGROUND DRAINAGE OR STORMWATER CONVEYANCE STRUCTURES			
FINAL INSPECTION WHEN ALL WORK, INCLUDING CONSTRUCTION OF STORMWATER MANAGEMENT FACILITIES AND LANDSCAPING HAVE BEEN COMPLETED			



**REFER TO SHEET GN-1 FOR GENERAL NOTES AND TO SHEET EC.2 FOR SEDIMENTATION AND EROSION CONTROL NOTES**

**FOR PERMITTING PURPOSES ONLY  
NOT RELEASED FOR CONSTRUCTION**

