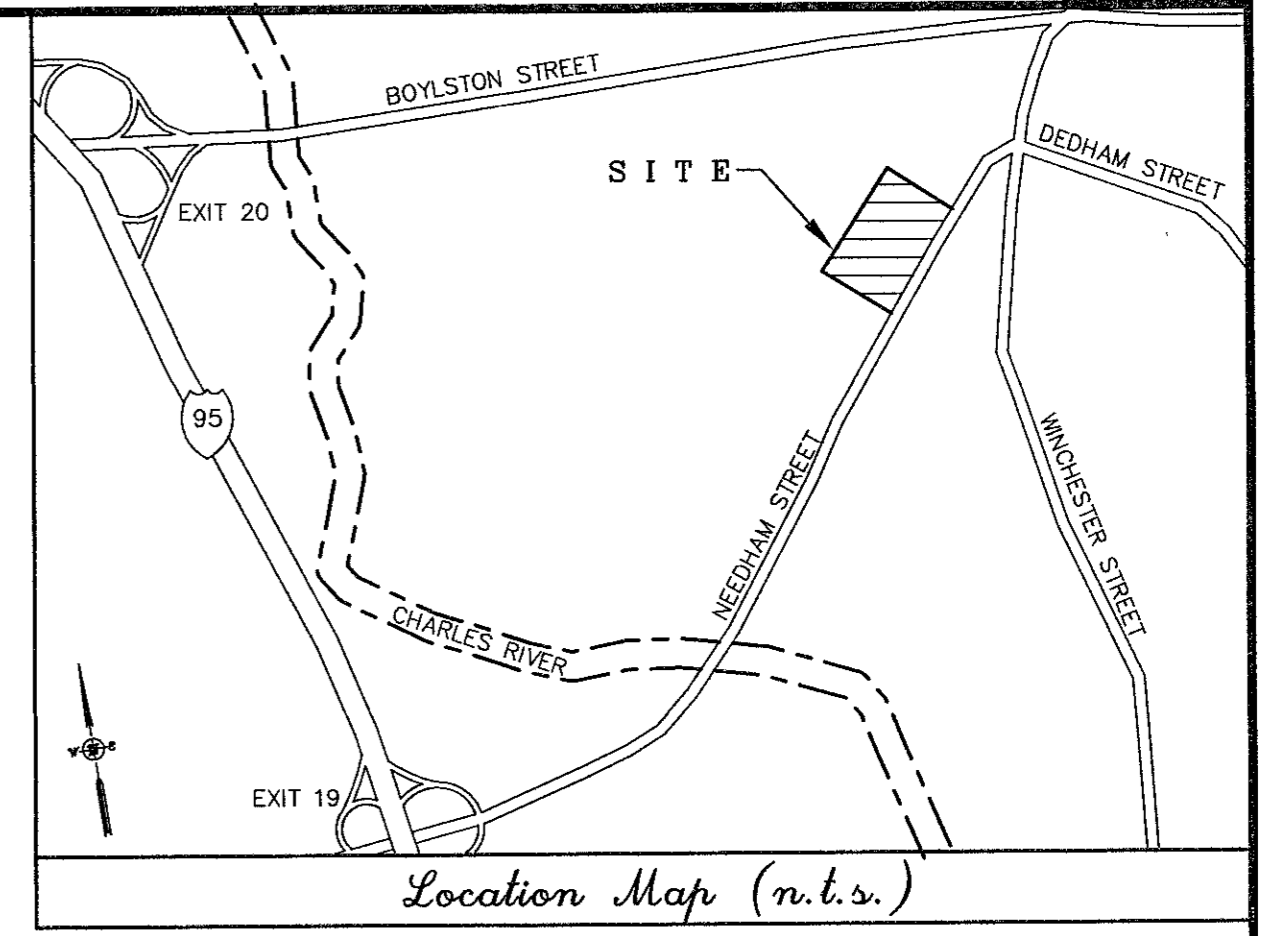


STRUCTURE TABLE (#1000) = CONNECTING STRUCTURE	DMH #2479	DMH #2553	SMH #2828
CBR #2344 RIM ELEV.=125.1' SUMP ELEV.=120.9'	RIM ELEV.=125.1' (#2456) 18" HDPE INV.=119.3' (#2602) 12" DI INV.=119.2' (#2511) 18" HDPE INV.=119.3'	RIM ELEV.=123.1' (#2514) 18" HDPE INV.=119.1' (#2539) 18" HDPE INV.=119.2'	RIM ELEV.=124.0' (#2649) 8" PVC INV.=118.3' (#2529) 4" PVC INV.=119.7' (#A) 4" PVC INV.=118.7'
DMH #2371 RIM ELEV.=124.5' (#2344) 10" HDPE INV.=120.5' (A) 12" DI INV.=120.4' (B) 8" DI INV.=120.5'	DMH #2511 RIM ELEV.=123.5' (#2479) 18" HDPE INV.=119.0' (#2514) 18" HDPE INV.=119.1' (#2539) 18" HDPE INV.=119.0'	DMH #2602 RIM ELEV.=123.9' (#2619) 12" DI INV.=119.5' (#2479) 12" DI INV.=119.4'	SMH #2829 RIM ELEV.=124' (#2828) 4" PVC INV.=118.5' SUMP ELEV.=115.0'
DMH #2372 RIM ELEV.=124.5' (#2448) 18" HDPE INV.=119.1' (#2400) 18" HDPE INV.=119.3' (A) 18" HDPE INV.=119.2'	DMH #2514 RIM ELEV.=123.2' (#2511) 18" HDPE INV.=119.1' (#2553) 18" HDPE INV.=119.1'	CB #2618 RIM ELEV.=123.6' (#2619) 12" DI INV.=120.3'	SMH #2831 RIM ELEV.=124.0' (GREASE TRAP)
DMH #2400 RIM ELEV.=124.6' (#2456) 18" HDPE INV.=119.0' (#2372) 18" HDPE INV.=119.0'	DMH #2539 RIM ELEV.=123.2' (#2511) 18" HDPE INV.=119.1' (#2553) 18" HDPE INV.=119.1' (#2540) 18" HDPE INV.=119.0'	DMH #2619 RIM ELEV.=124.1' (#2602) 12" DI INV.=119.7' (#2629) 12" DI INV.=115.4' (#2618) 12" DI INV.=115.4'	SMH #2875 RIM ELEV.=125.3' SUMP ELEV.=116.1' (GREASE TRAP)
CB #2401 RIM RIM ELEV.=123.9' 12" HDPE INV.=120.0'	DMH #2540 RIM ELEV.=123.1' (#2539) 18" HDPE INV.=119.4' (#2544) 12" HDPE INV.=119.1' (C) 12" HDPE INV.=120.0' (D) 12" HDPE INV.=120.2'	SMH #2629 RIM ELEV.=123.5' (#2619) 12" DI INV.=120.4'	SMH #2898 RIM ELEV.=125.1' (#2878) 4" PVC INV.=118.4' (#2649) 8" PVC INV.=118.1' (A) 4" PVC INV.=118.3'
DMH #2424 RIM ELEV.=125.9' (A) 12" HDPE INV.=120.3' (B) 6" PVC INV.=122.0' (C) 12" HDPE INV.=120.0' (D) 12" HDPE INV.=120.2'	DMH #2544 RIM ELEV.=122.7' (#2540) 12" HDPE INV.=119.7'	SMH #2649 RIM ELEV.=123.4' (#2927) 8" PVC INV.=116.2' (#2898) 8" PVC INV.=116.2' (#2828) 8" PVC INV.=116.5'	SMH #2927 RIM ELEV.=123.4' (#2649) 8" PVC INV.=115.6' (DATA PER CONTRACTOR) (A) 10" INV. OUT =115.6'
DMH #2448 RIM ELEV.=124.8' (#2372) 18" HDPE INV.=119.1' (#2456) 18" HDPE INV.=119.1'	CBR #2544 RIM ELEV.=122.7' (#2540) 12" HDPE INV.=119.7'	CB #2710 RIM ELEV.=122.9' (#2540) 12" DI INV.=119.8'	CBR #2982 RIM ELEV.=125.2' SUMP ELEV.=122.3'
DMH #2456 RIM ELEV.=124.8' (#2448) 18" HDPE INV.=119.0' (#2400) 18" HDPE INV.=119.1' (#2479) 18" HDPE INV.=119.1'	CBR #2549 RIM ELEV.=122.6' (#2540) 8" DI INV.=119.5' (#2540) 8" DI INV.=119.8'	CBR #2971 RIM ELEV.=125.2' SUMP ELEV.=123.3'	PDHM #4 (DATA PER CONTRACTOR) RIM ELEV.=124.8' 12" HDPE INV. OUT =120.6'

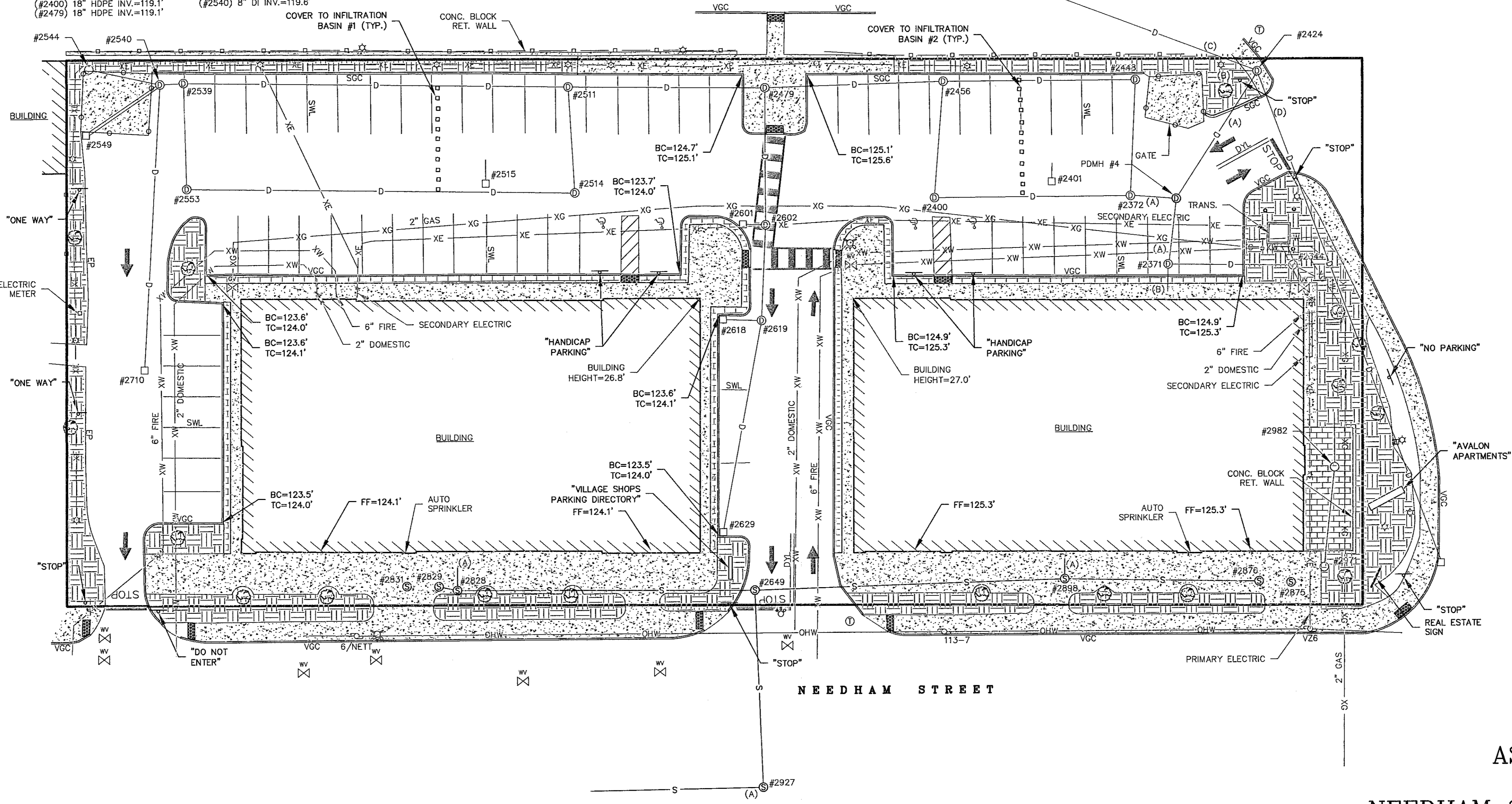
- NOTES:
- REFERENCE: PARCELS 51028 20, 51028 22 & 51028 23
 - OWNER OF RECORD: NEEDHAM ST VILLAGE SHOPS LLC
420 BEDFORD ST
LEXINGTON, MA 02420
 - ZONE: MUI
 - FIELD SURVEY PERFORMED BY E.J.S. & W.D.C. DURING 12/14 USING A TRIMBLE S6 TOTAL STATION WITH A TRIMBLE TSC3 DATA COLLECTOR AND A SOKKIA B21 AUTO LEVEL.
 - HORIZONTAL DATUM BASED ON MASS MAINLAND COORDINATES, NAD83/2011.
 - VERTICAL DATUM IS BASED ON THRESHOLD ON HOUSE #50 NEEDHAM STREET WITH AN ELEVATION OF 125.89' PER CITY OF NEWTON ENGINEERING DEPARTMENT.
 - THE INTENT OF THIS PLAN IS TO SHOW THE AS-BUILT FEATURES AS THEY RELATE TO THE SITE. THIS PLAN MAKES NO CERTIFICATION AS TO COMPLIANCE WITH ZONING OR THE DESIGN PLAN.
 - THE ACCURACY OF MEASURED UTILITY INVERTS AND PIPE SIZES/TYPES IS SUBJECT TO NUMEROUS FIELD CONDITIONS, INCLUDING; THE ABILITY TO MAKE VISUAL OBSERVATIONS, DIRECT ACCESS TO THE VARIOUS ELEMENTS, MANHOLE CONFIGURATION, ETC.
 - AS-BUILT UNDERGROUND UTILITY DATA (EXCLUDING DRAINAGE & SEWER) WAS PROVIDED TO DOUCET SURVEY, INC. BY BOWDOIN CONSTRUCTION CORP. DOUCET SURVEY MAKES NO CERTIFICATION AS TO THE ACCURACY OF SAID DATA.
- REFERENCE PLANS:
- "LOT CONSOLIDATION PLAN, LANDS OF NEEDHAM STREET VILLAGE SHOPS, LLC, 49, 55 & 71 NEEDHAM STREET, NEWTON, MASSACHUSETTS" PREPARED BY DOUCET SURVEY, INC. DATED JAN. 24, 2013.
 - "SITE PLAN 71 NEEDHAM STREET, NEWTON, MA 02461" PREPARED BY TIGHE & BOND, INC. DATED FEBRUARY 20, 2013.



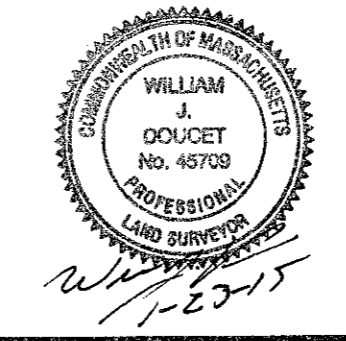
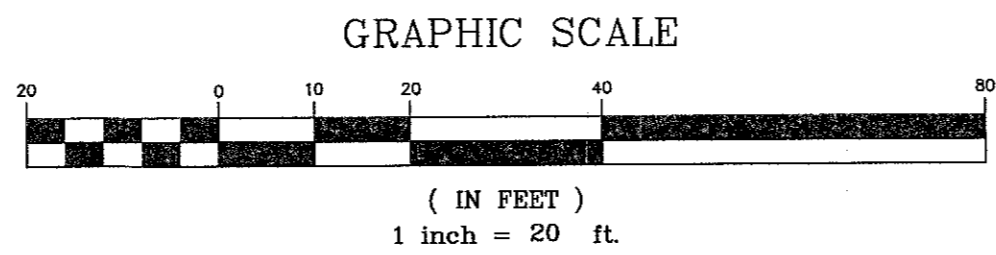
LEGEND

	UTILITY POLE & GUY WIRE
	LIGHT POLE
	SIGN
	CROSSWALK MAT
	FIRE HYDRANT
	GAS GATE VALVE
	WATER GATE VALVE
	WATER SHUTOFF VALVE
	ELECTRIC BOX
	CATCH BASIN (ROUND)
	CATCH BASIN
	DRAIN MANHOLE
	TELEPHONE MANHOLE
	SEWER MANHOLE
	ORNAMENTAL TREE
	CONCRETE
	LANDSCAPED AREA
	BRICK
	HANDICAP PARKING SPACE
	BOLLARD
	TRAFFIC FLOW DIRECTION ARROW
	TYPICAL
	RETAINING
	FINISHED FLOOR
	FF
	EDGE OF PAVEMENT
	EP
	SINGLE WHITE LINE
	SWL
	DOUBLE YELLOW LINE
	DYL
	CONC.
	VGC
	SGC
	TRANS.
	BC
	TC
	PROPERTY LINES
	STOCKADE FENCE
	CHAINLINK FENCE
	OVERHEAD WIRES
	SEWER LINE
	DRAIN LINE
	UNDERGROUND UTILITIES
	GAS LINE
	WATER LINE
	UNDERGROUND ELECTRIC LINE

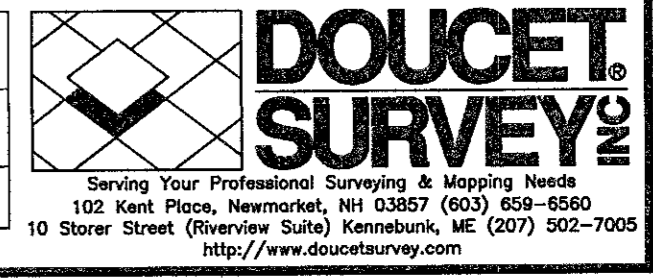
(PER MARK-UP PLAN PROVIDED BOWDOIN CONST.)



AS-BUILT PLAN
OF
NEEDHAM STREET VILLAGE SHOPS
71 NEEDHAM STREET
NEWTON, MASSACHUSETTS



DRAWN BY:	M.W.F.	DATE:	JAN. 23, 2015
CHECKED BY:	J.F.K.	DRAWING NO.:	3724
JOB NO.:	3724	SHEET	1 OF 1



NO.	DATE	DESCRIPTION	BY

NOTE:
ALL ELECTRIC, GAS, TEL, WATER, SEWER AND DRAIN SERVICES ARE SHOWN IN SCHEMATIC FASHION. THEIR LOCATIONS ARE NOT PRECISE OR NECESSARILY ACCURATE. NO WORK WHATSOEVER SHALL BE UNDERTAKEN ON THIS SITE USING THIS PLAN TO LOCATE THE ABOVE SERVICES. CONSULT WITH THE PROPER AUTHORITIES CONCERNED WITH THE SUBJECT SERVICE LOCATIONS FOR INFORMATION REGARDING SUCH. CALL DIG-SAFE AT 1-888-DIG-SAFE.