

PLAN

BRUSHED STAINLESS STEEL HOUSING,
NO EXPOSED FASTENERS, EXCEPT AT REAR

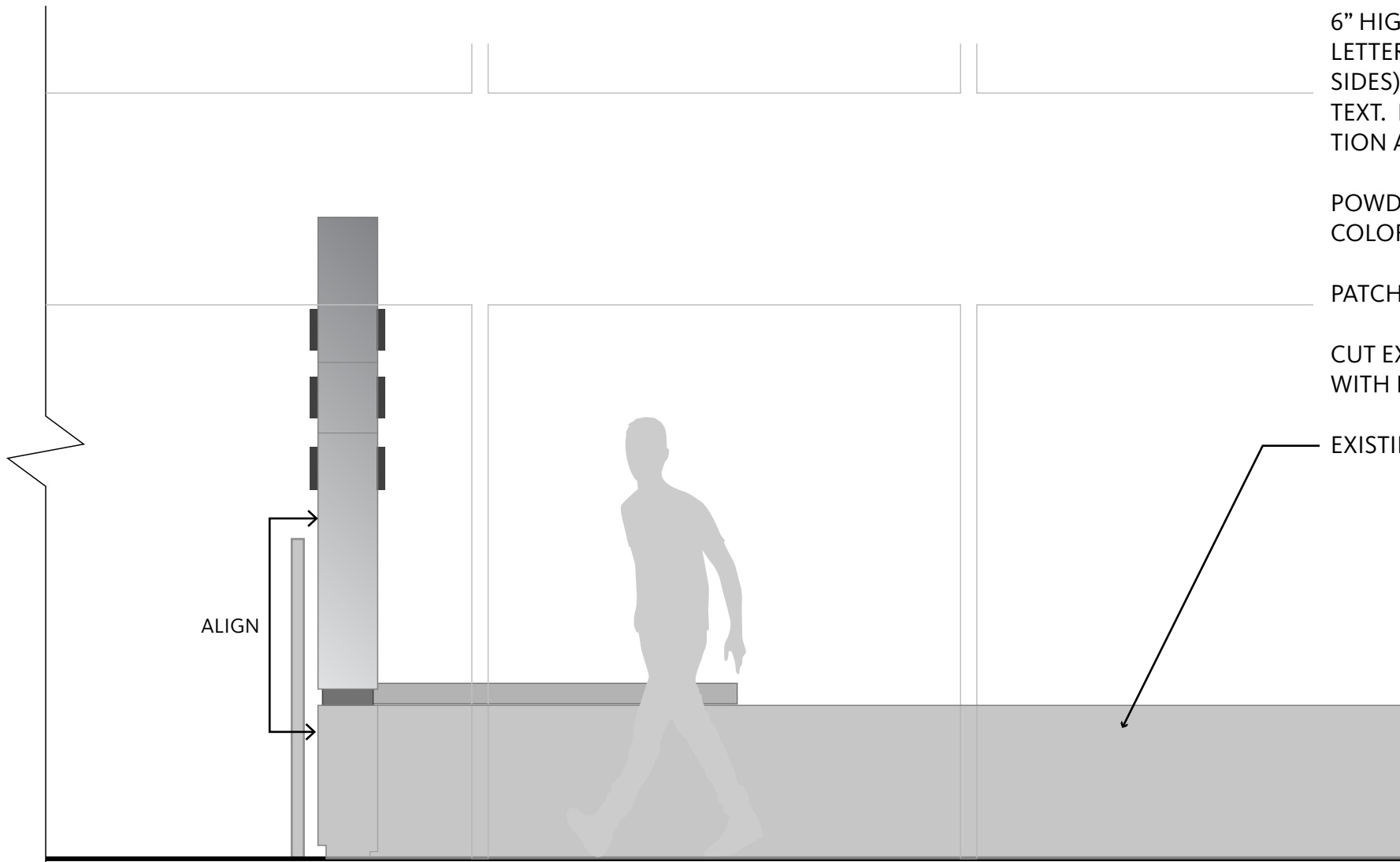
6" HIGH x 1" DEEP ACRYLIC 'PUSH-THRU'
LETTERS WITH BLACK VINYL FACES (BOTH
SIDES). PROVIDE 4" BETWEEN EACH LINE OF
TEXT. PROVIDE INTERNAL LED ILLUMINA-
TION AS NECESSARY

POWDER COATED METAL 'REVEAL' BASE -
COLOR TO MATCH EXISTING CURTAIN WALL

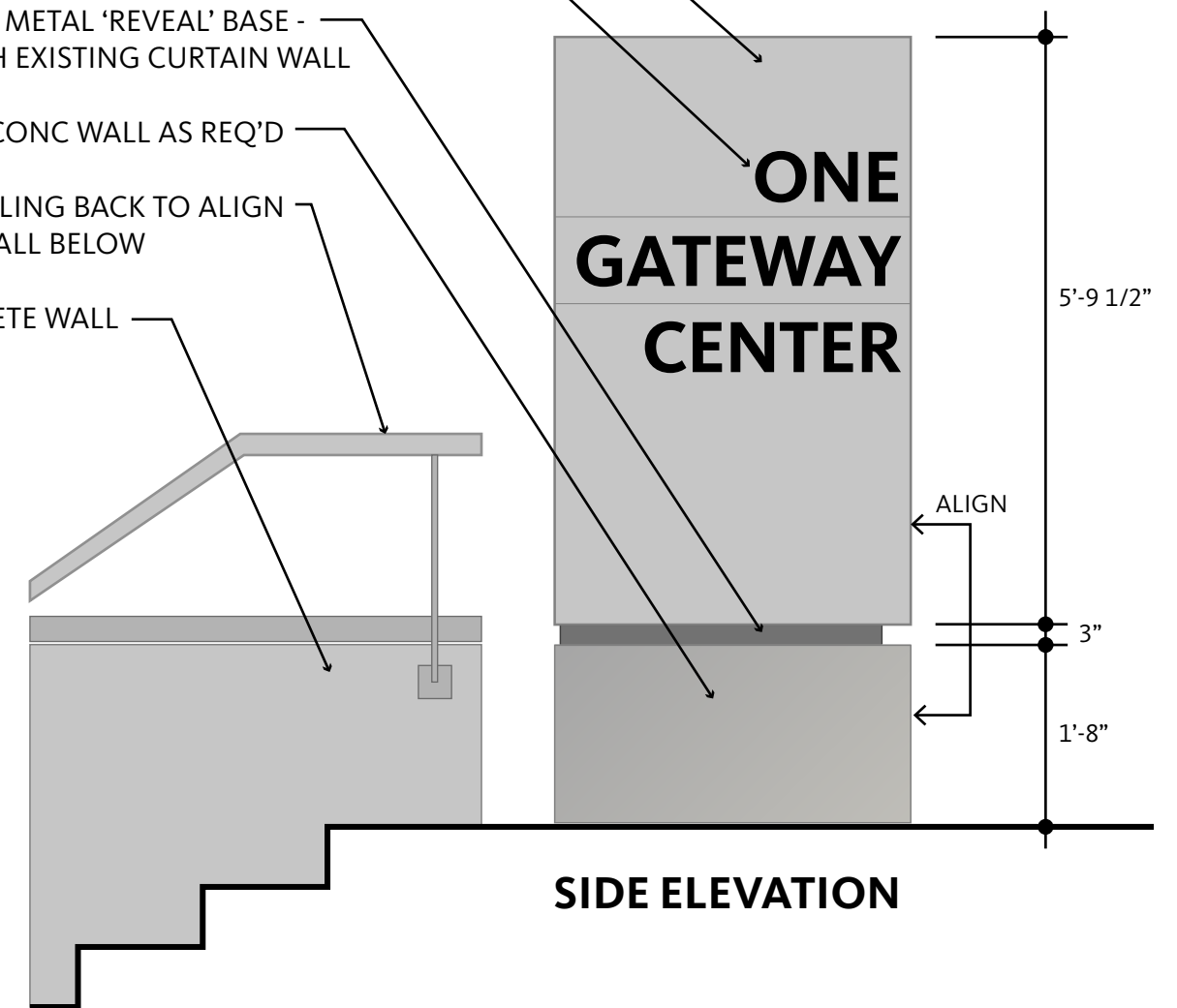
PATCH EXISTING CONC WALL AS REQ'D

CUT EXISTING RAILING BACK TO ALIGN
WITH PLANTER WALL BELOW

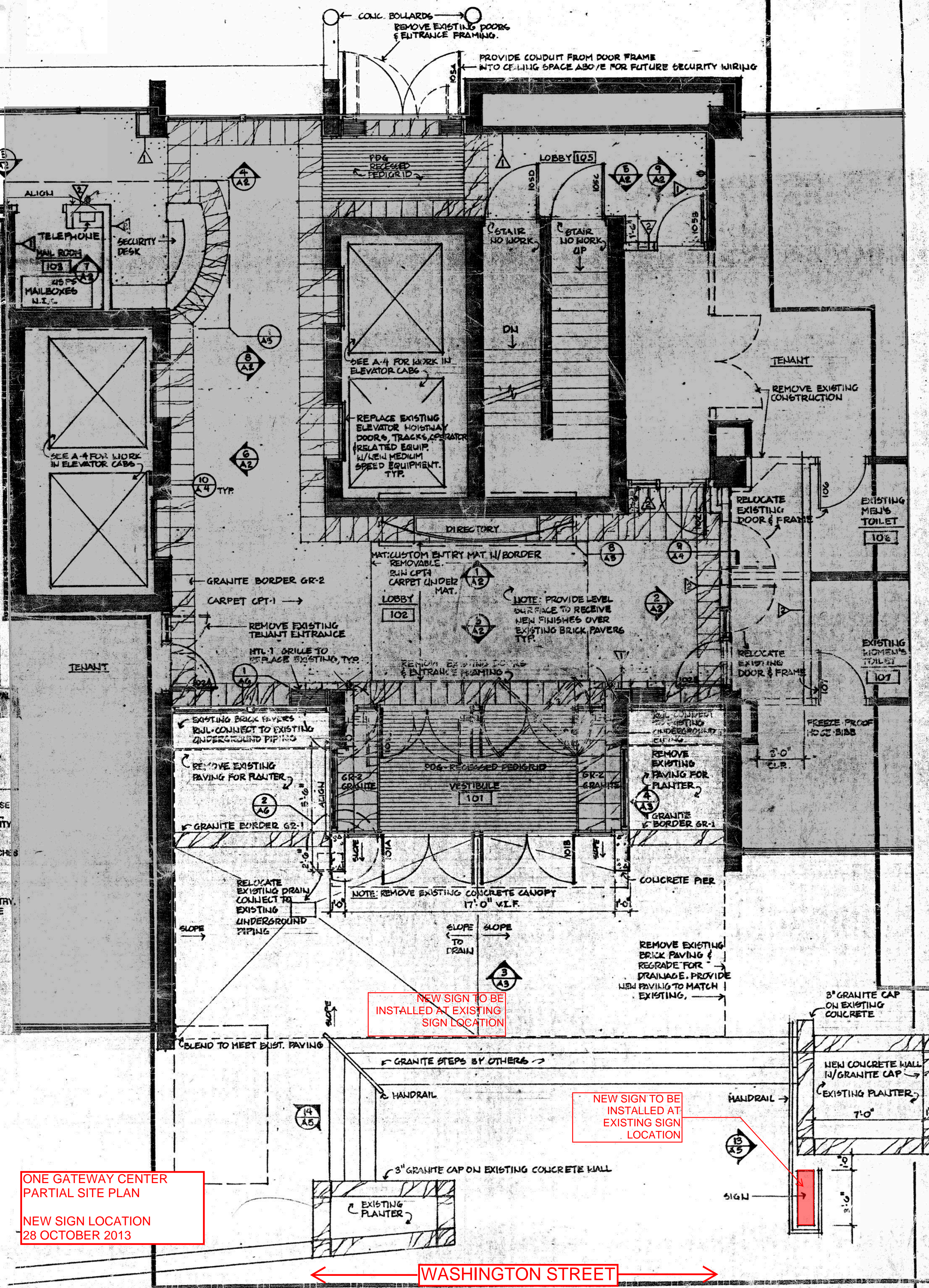
EXISTING CONCRETE WALL



FRONT ELEVATION



SIDE ELEVATION



NEW SIGN TO BE INSTALLED AT EXISTING SIGN LOCATION

NEW SIGN TO BE INSTALLED AT EXISTING SIGN LOCATION

ONE GATEWAY CENTER PARTIAL SITE PLAN
 NEW SIGN LOCATION
 28 OCTOBER 2013

← WASHINGTON STREET →

CONC. BOLLARDS
 REMOVE EXISTING DOORS & ENTRANCE FRAMING.

PROVIDE CONDUIT FROM DOOR FRAME INTO CEILING SPACE ABOVE FOR FUTURE SECURITY WIRING

PDG RECESSED PEDIGRID

LOBBY 105

STAIR NO WORK

STAIR NO WORK UP

SEE A-4 FOR WORK IN ELEVATOR CABS
 REPLACE EXISTING ELEVATOR HOISTWAY DOORS, TRACKS, OPERATOR RELATED EQUIP. W/ NEW MEDIUM SPEED EQUIPMENT. TYP.

TENANT
 REMOVE EXISTING CONSTRUCTION

SEE A-4 FOR WORK IN ELEVATOR CABS

DIRECTORY

MAT: CUSTOM ENTRY MAT W/ BORDER REMOVABLE. RUN CPT3 CARPET UNDER MAT.

LOBBY 102

NOTE: PROVIDE LEVEL SURFACE TO RECEIVE NEW FINISHES OVER EXISTING BRICK PAVES TYP.

GRANITE BORDER GR-2
 CARPET CPT-1

REMOVE EXISTING TENANT ENTRANCE

MTL-1 GRILLE TO REPLACE EXISTING, TYP.

REMOVE EXISTING DOORS & ENTRANCE FRAMING

RELOCATE EXISTING DOOR & FRAME

EXISTING MEN'S TOILET 106

RELOCATE EXISTING DOOR & FRAME

EXISTING WOMEN'S TOILET 107

EXISTING BRICK PAVES RJL-CONNECT TO EXISTING UNDERGROUND PIPING

REMOVE EXISTING PAVING FOR PLANTER

GRANITE BORDER GR-1

PDG RECESSED PEDIGRID

VESTIBULE 101

REMOVE EXISTING PAVING FOR PLANTER

GRANITE BORDER GR-1

FREEZE PROOF HOSE BIBB

RELOCATE EXISTING DRAIN CONNECT TO EXISTING UNDERGROUND PIPING

NOTE: REMOVE EXISTING CONCRETE CANOPY 17'-0" W.I.F.

CONCRETE PIER

REMOVE EXISTING BRICK PAVING & REGRADE FOR DRAINAGE. PROVIDE NEW PAVING TO MATCH EXISTING.

3" GRANITE CAP ON EXISTING CONCRETE

BLEND TO MEET EXIST. PAVING

GRANITE STEPS BY OTHERS

HANDRAIL

HANDRAIL

NEW CONCRETE WALL W/ GRANITE CAP

EXISTING PLASTER

3" GRANITE CAP ON EXISTING CONCRETE WALL

EXISTING PLANTER

SIGN

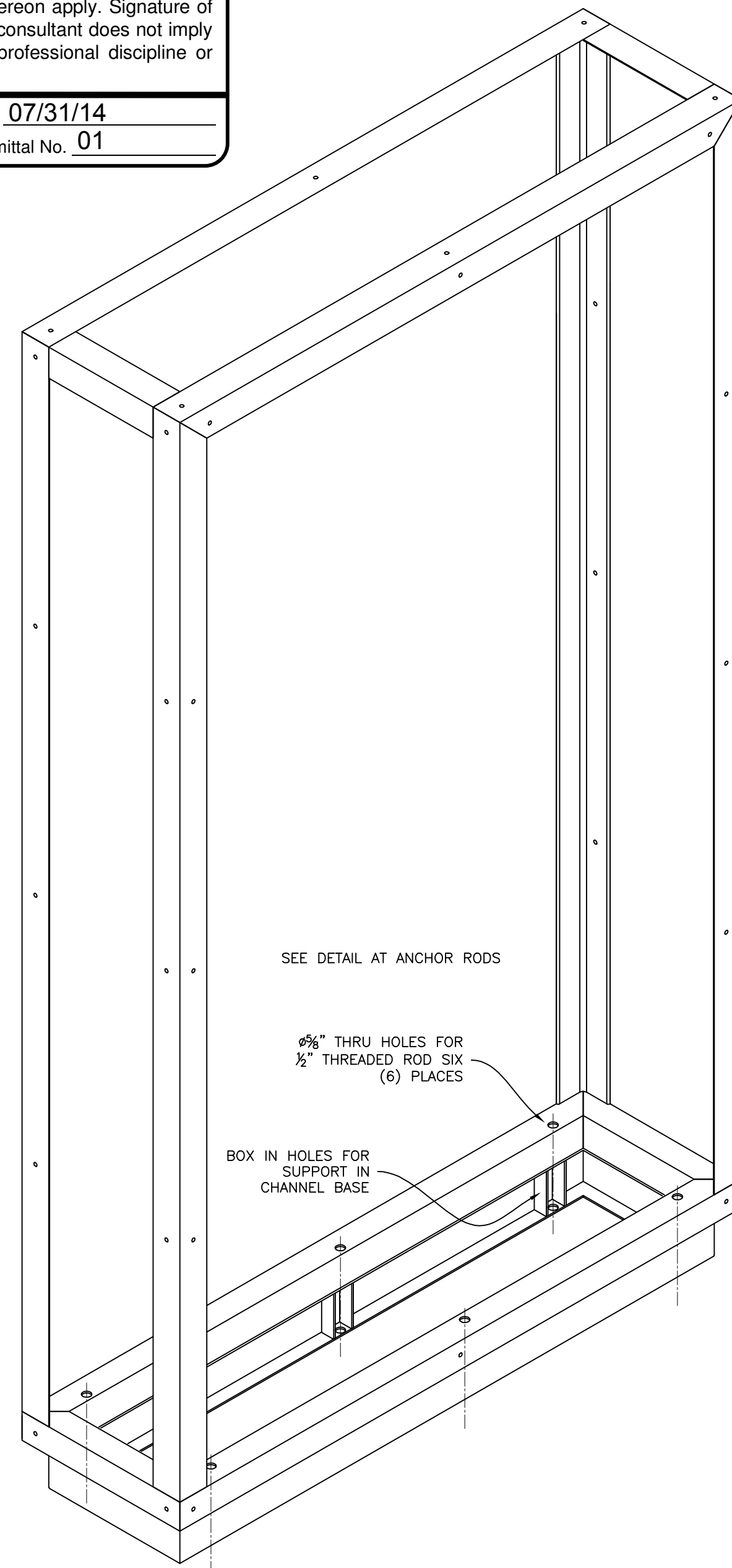
SUBMITTAL REVIEW

- NO EXCEPTIONS TAKEN.**
- MAKE CORRECTIONS AS NOTED.** Resubmittal not required unless Contractor cannot comply with corrections noted.
- REVISE AS NOTED AND RESUBMIT.**
- RESUBMIT PROPERLY.** Submittal not reviewed for reasons noted.
- NOT REVIEWED.** Submittal not required by Contract Documents.
- RECEIVED FOR CLIENT'S RECORD ONLY.** Submittal not reviewed.

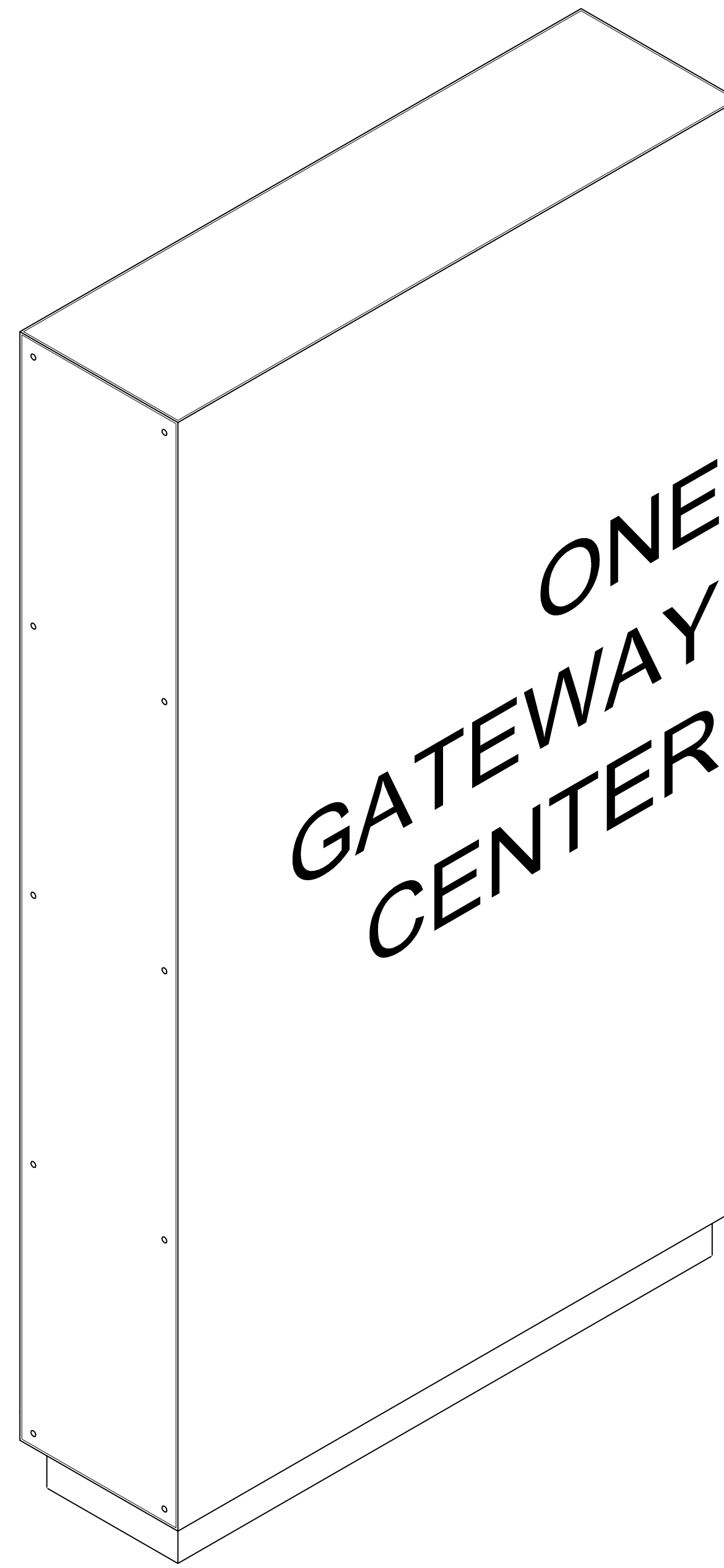
Gensler has reviewed this Submittal, but only for the purpose of checking for conformance with the design intent expressed in the Contract Documents. Gensler's action on a specific item does not indicate approval of an assembly of which the item is a component, nor of an item as delivered and installed if it does not conform to the Contract Documents.

Contractor is responsible for checking for deviations between this Submittal and differing information or conditions in the Contract Documents and field conditions; for determining or substantiating the accuracy and completeness of other details such as dimensions and quantities; for substantiating instructions for installation or performance of equipment or systems designed by Contractor; for construction means, methods, techniques, schedules, sequences, procedures, and fabrication processes; for errors and omissions in Submittals; for coordination of the Work of the trades, safety precautions and performing the Work in a safe and satisfactory manner and in conformance with the Contract Documents. If more than one submittal review stamp appears on this Submittal, the most stringent action and notations thereon apply. Signature of a submittal review stamp by Gensler or a consultant does not imply that it has reviewed work not within its professional discipline or scope of services.

By Todd Dundon Date 07/31/14
 Project No. 11.6592.000 Submittal No. 01



ISOMETRIC VIEW WITHOUT PANELS
AND WITHOUT 1" X 5" ANGLES
NO SCALE



ISOMETRIC VIEW
NO SCALE

SIGN TO BE 12" X 42" X 72½" OVERALL
(NOT COUNTING THREADED ANCHOR RODS)

FRAME TO BE STAINLESS STEEL

PANELS ON FOUR (4) SIDES
AND TOP

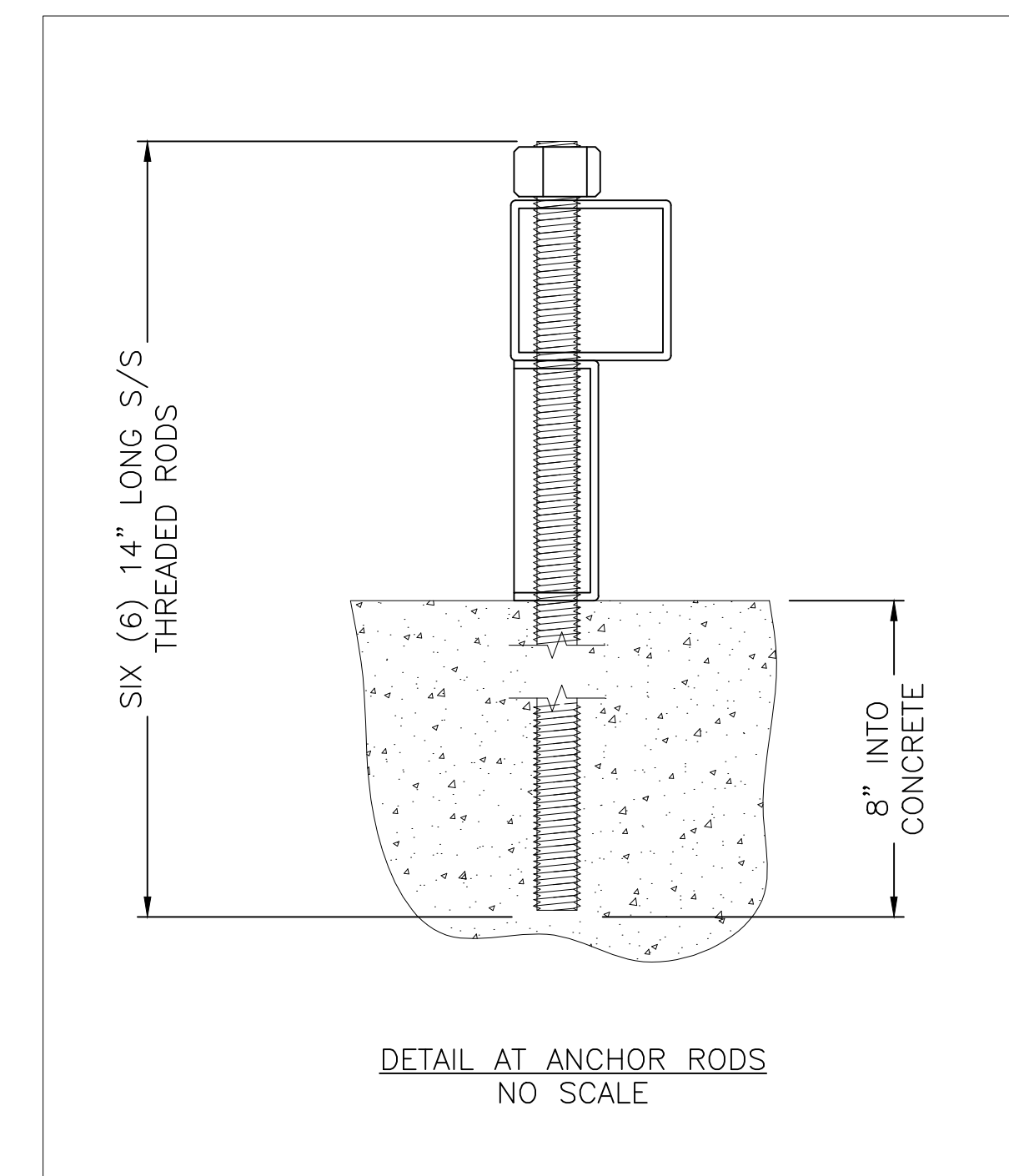
PANELS TO BE TYPE 316L
STAINLESS STEEL

GRAIN ON PANELS TO BE
HORIZONTAL

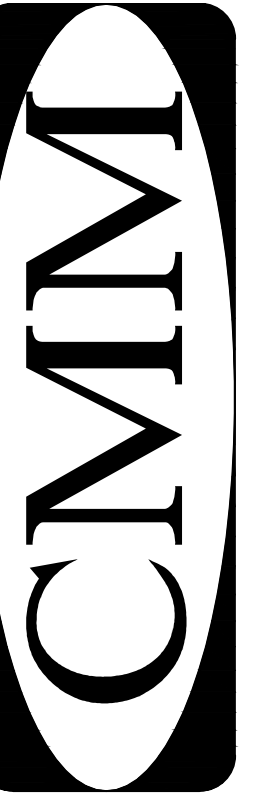
END PANELS TO BE FLUSH FASTENED
WITH COUNTERSUNK SCREWS

LONG SIDE PANELS AND TOP PANEL
TO HAVE STUDS WELDED ON TO
MOUNT IN HOLES ON FRAME- NO
FASTENERS TO SHOW ON LONG SIDE
PANELS OR TOP PANEL

LASER CUTTING OF LETTERING ON
LONG SIDE PANELS BY OTHERS



DETAIL AT ANCHOR RODS
NO SCALE



CUSTOM METALS OF MASSACHUSETTS, INC.
10 CALIPER RD. WHITMAN, MA. 02382
TELEPHONE: (781)-447-8090
FAX: (781)-447-8095

DRAWN BY:	JWH	REVISION DATES
ISSUE DATE:	7/30/14	
SCALE:	AS NOTED	

PROJECT: SIGN
FOR: SAVIT & ASSOCIATES
ITEM #

FS-1
REV 0

ALL DIMENSIONS MUST BE VERIFIED PRIOR TO FABRICATION. ONCE THE DRAWING IS APPROVED ALL THE EQUIPMENT WILL BE BUILT AS SHOWN ON THE APPROVED SET OF DRAWINGS. IN ADDITION TO DIMENSIONS ALL THE CUTOUTS SHOULD BE VERIFIED TO ENSURE THE PROPER FIT AND LOCATIONS. ALL CHANGES SHOULD BE MADE ON THIS DRAWING AND SIGNED OFF BY THE INDIVIDUAL OR INDIVIDUALS REQUESTING ALL THE CHANGES TO BE MADE BY CMM. THIS DRAWING IS THE PROPERTY OF CUSTOM METALS OF MASSACHUSETTS, INC. (CMM) AND IS TO REMAIN IN THE POSSESSION OF OUR REPRESENTATIVE UNLESS PERMISSION IS GIVEN BY CMM AND MUST BE RETURNED WHEN REQUESTED.

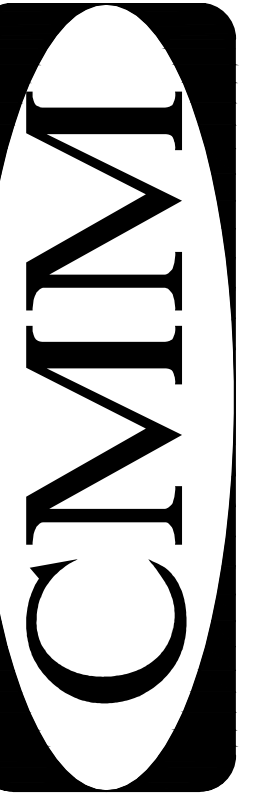
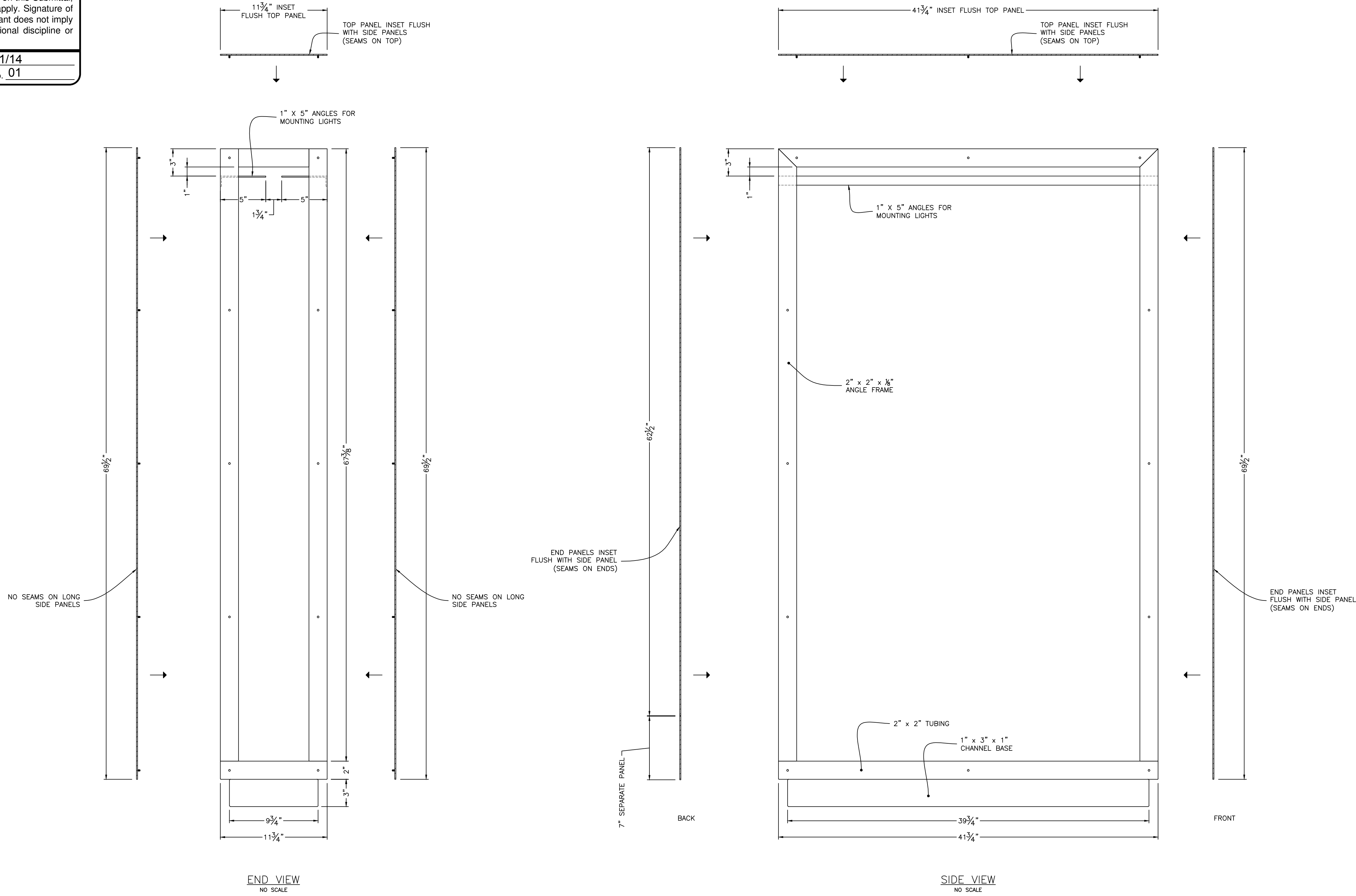
SUBMITTAL REVIEW

- NO EXCEPTIONS TAKEN.**
- MAKE CORRECTIONS AS NOTED.** Resubmittal not required unless Contractor cannot comply with corrections noted.
- REVISE AS NOTED AND RESUBMIT.**
- RESUBMIT PROPERLY.** Submittal not reviewed for reasons noted.
- NOT REVIEWED.** Submittal not required by Contract Documents.
- RECEIVED FOR CLIENT'S RECORD ONLY.** Submittal not reviewed.

Gensler has reviewed this Submittal, but only for the purpose of checking for conformance with the design intent expressed in the Contract Documents. Gensler's action on a specific item does not indicate approval of an assembly of which the item is a component, nor of an item as delivered and installed if it does not conform to the Contract Documents.

Contractor is responsible for checking for deviations between this Submittal and differing information or conditions in the Contract Documents and field conditions; for determining or substantiating the accuracy and completeness of other details such as dimensions and quantities; for substantiating instructions for installation or performance of equipment or systems designed by Contractor; for construction means, methods, techniques, schedules, sequences, procedures, and fabrication processes; for errors and omissions in Submittals; for coordination of the Work of the trades, safety precautions and performing the Work in a safe and satisfactory manner and in conformance with the Contract Documents. If more than one submittal review stamp appears on this Submittal, the most stringent action and notations thereon apply. Signature of a submittal review stamp by Gensler or a consultant does not imply that it has reviewed work not within its professional discipline or scope of services.

By Todd Dundon Date 07/31/14
 Project No. 11.6592.000 Submittal No. 01



CUSTOM METALS OF MASSACHUSETTS, INC.
 10 CALIPER RD. WHITMAN, MA. 02382
 TELEPHONE: (781)-447-8090
 FAX: (781)-447-8095

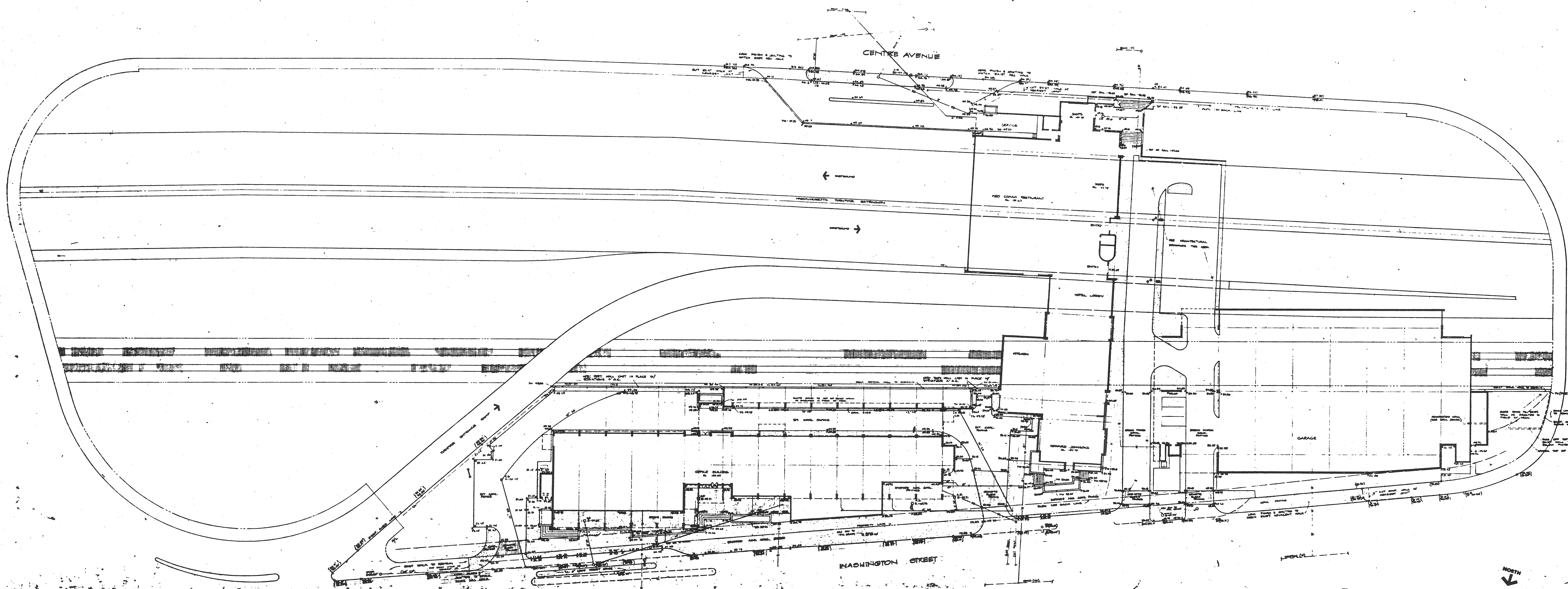
DRAWN BY:	JWH	REVISION DATES
ISSUE DATE:	7/30/14	
SCALE:	AS NOTED	

PROJECT: SIGN
 FOR: SAVIT & ASSOCIATES
 ITEM # -

**FS-2
 REV 0**

THIS DRAWING IS THE PROPERTY OF CUSTOM METALS OF MASSACHUSETTS, INC. (CMM) AND IS TO REMAIN IN THE POSSESSION OF OUR REPRESENTATIVE UNLESS PERMISSION IS GIVEN BY CMM AND MUST BE RETURNED WHEN REQUESTED.

ALL DIMENSIONS MUST BE VERIFIED PRIOR TO FABRICATION. ONCE THE DRAWING IS APPROVED ALL THE EQUIPMENT WILL BE BUILT AS SHOWN ON THE APPROVED SET OF DRAWINGS. IN ADDITION TO DIMENSIONS ALL THE CUTOUTS SHOULD BE VERIFIED TO ENSURE THE PROPER FIT AND LOCATIONS. ALL CHANGES SHOULD BE MADE ON THIS DRAWING AND SIGNED OFF BY THE INDIVIDUAL OR INDIVIDUALS REQUESTING ALL THE CHANGES TO BE MADE BY CMM.



THE CONTRACTOR SHALL VERIFY ALL DIMENSIONS AND VERIFY ALL WORKMANSHIP IN THE ABOVE DRAWING BEFORE COMMENCING CONSTRUCTION OR INSTALLATION.

AIR RIGHTS PLAZA
 MASSACHUSETTS TURNPIKE AT NEWTON CORNER, MASS.
 THE WHITE AND WALTCH TRUST
 313 Washington Street, Newton, Massachusetts 02158 DE2-7320

ARCHITECT: DAVIES and WOLF Cambridge, Mass. 864-4830 864-4831
 Consultants:
 ALBERT GOLDBERG and ASSOC. INC. Structural Engineers 267-8890
 STRESENGER and ADAMS Mechanical Engineers 949-9890
 GOODALL SHAPIRO ASSOCIATES Electrical Engineers 227-9835
 LAWRENCE W. WALQUIST, JR. and ASSOC. INC. Landscape Architects 491-8400

NO.	REVISION	DATE

SITE PLAN

PROJECT 1
X-3