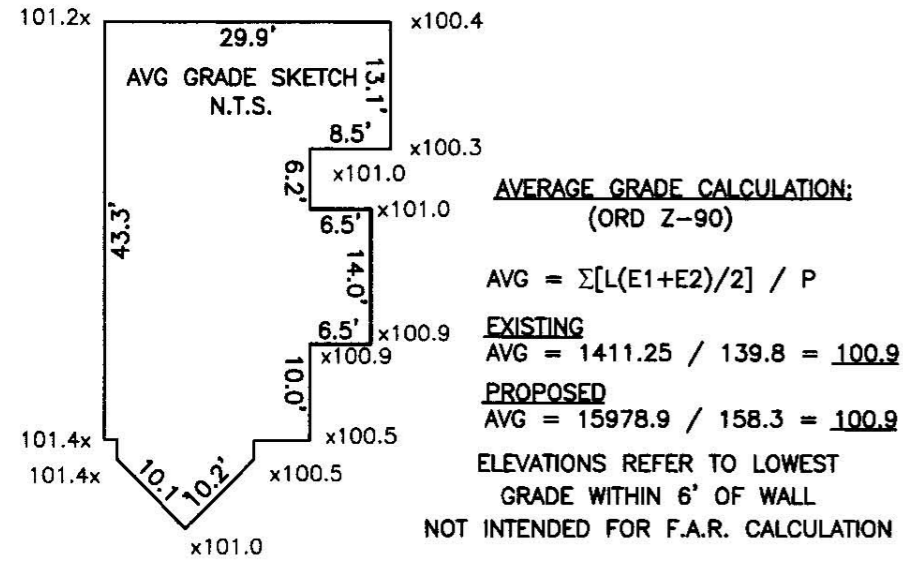
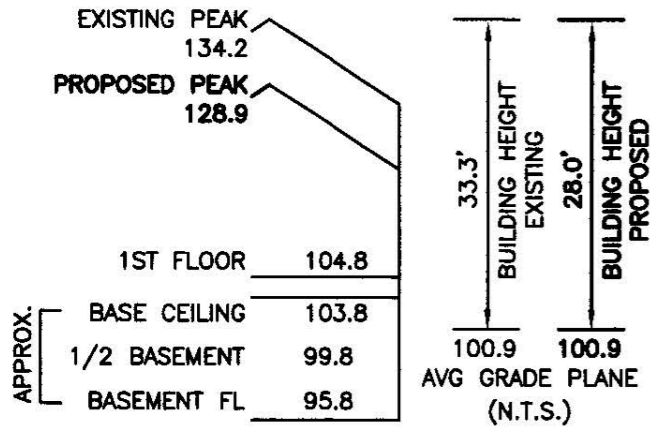


**BUILDING HEIGHT CALCULATION**



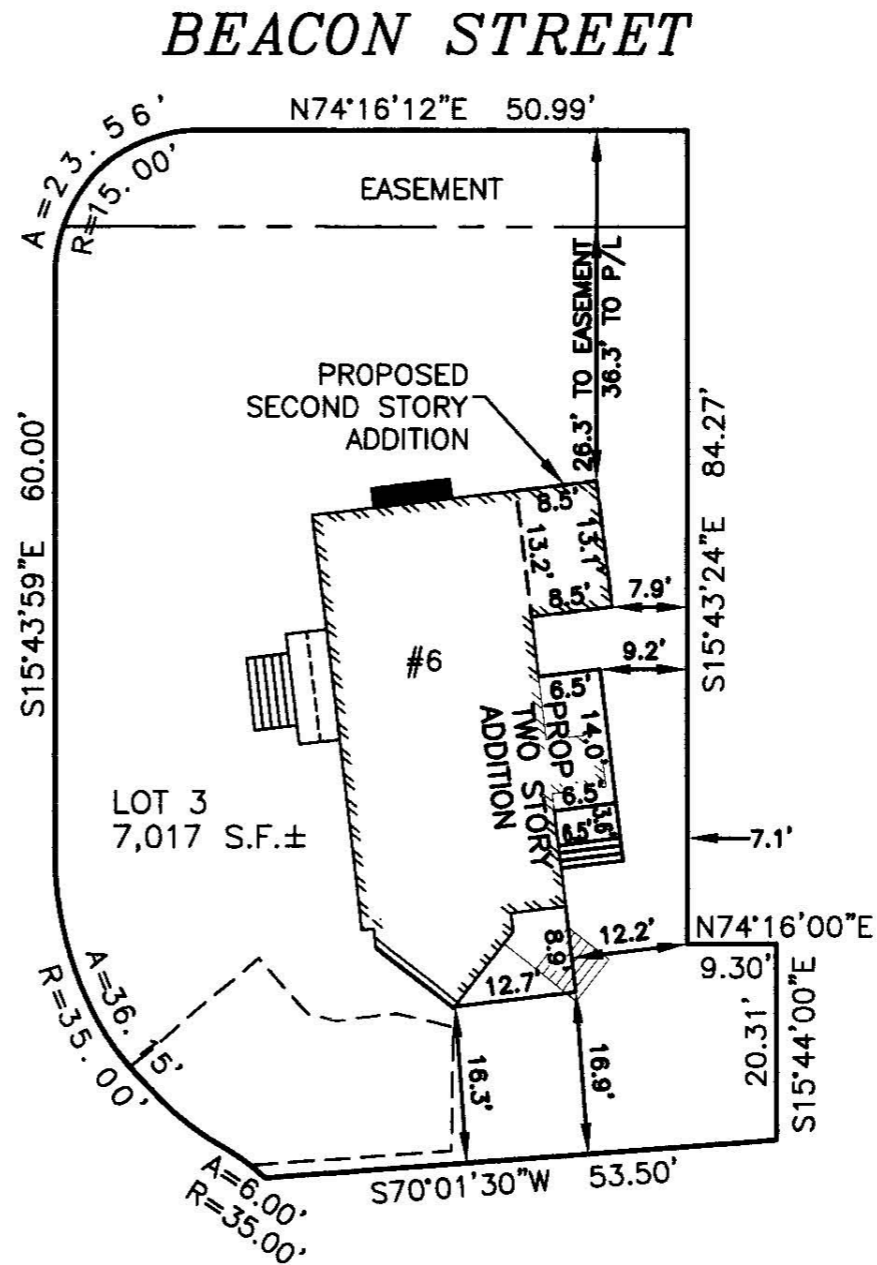
**ZONING INFORMATION**

ZONE: SR-2  
PLAN DATED: SEPT 1928  
DEED REFERENCE: BOOK 59404 PAGE 155

	EXISTING	PROPOSED	REQUIRED
BUILDINGS	1174 S.F.	1,234 S.F.	
STRUCTURES	1225 S.F.	1,357 S.F.	
DRIVE	465 S.F. ±	464 S.F. ±	
	1690 S.F. ±	1,821 S.F. ±	
LOT COVERAGE	16.6%	17.6%	(xx% MAX.)
OPEN SPACE	76% ±	74% ±	(xx% MIN.)

ZONING COMPLIANCE DETERMINED BY MUNICIPALITY.  
SEE ARCHITECT'S DOCUMENTS FOR FAR CALCULATION

**GLASTONBURY OVAL**



ESTABLISHED 1916

**EMB**

**EVERETT M. BROOKS CO.**  
SURVEYORS & ENGINEERS

49 LEXINGTON STREET  
WEST NEWTON, MA 02465

(617) 527-8750  
(617) 332-1578 FAX  
info@everettbrooks.com



**PLAN OF LAND IN  
NEWTON, MA**

6 GLASTONBURY OVAL  
PROPOSED ADDITIONS

SCALE: 1 IN. = 20 FT.  
DATE: AUGUST 3, 2016  
DRAWN: JF/MF  
CHECK: BB

REVISIONS:


PROJECT NO. 24728