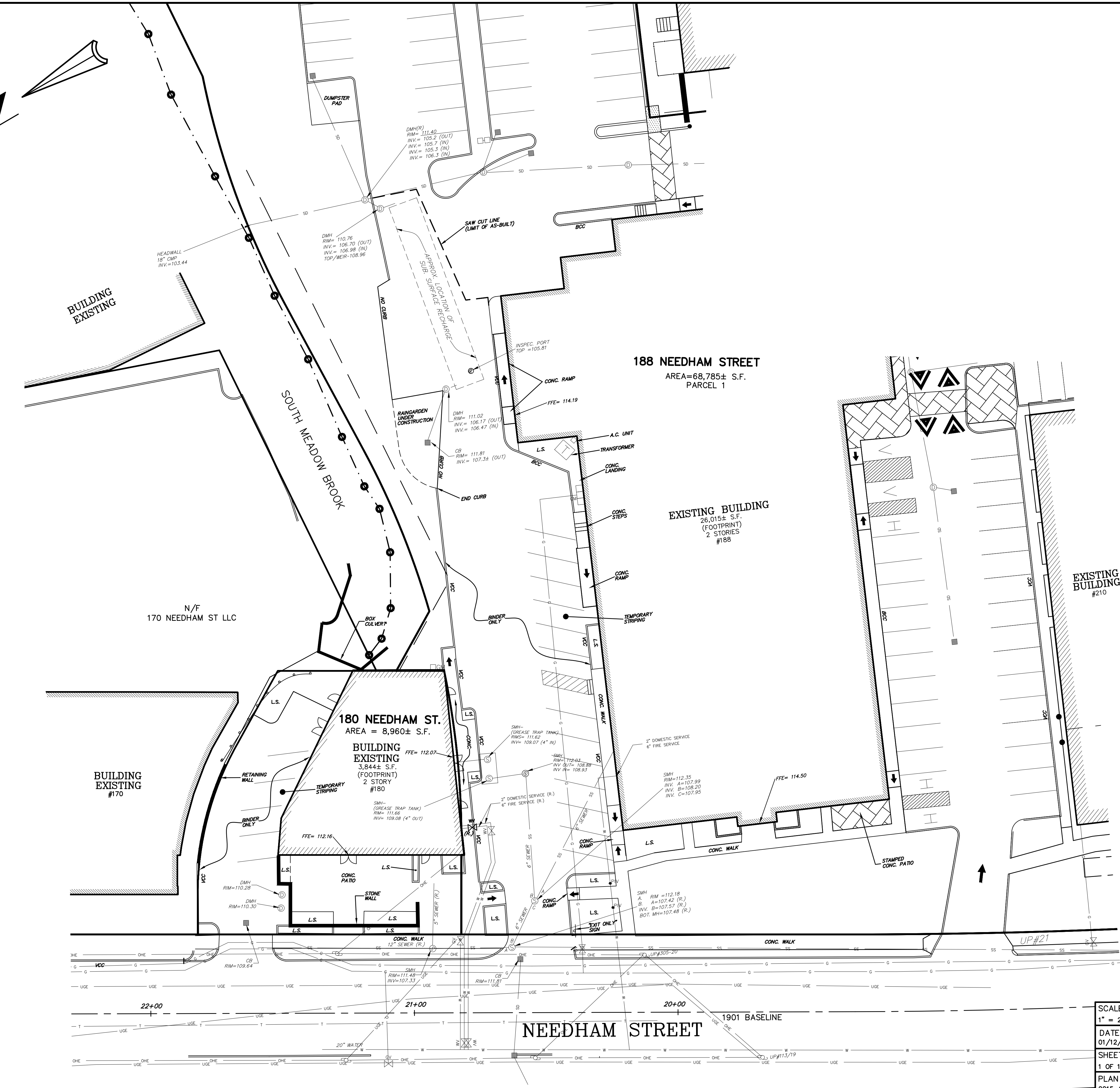
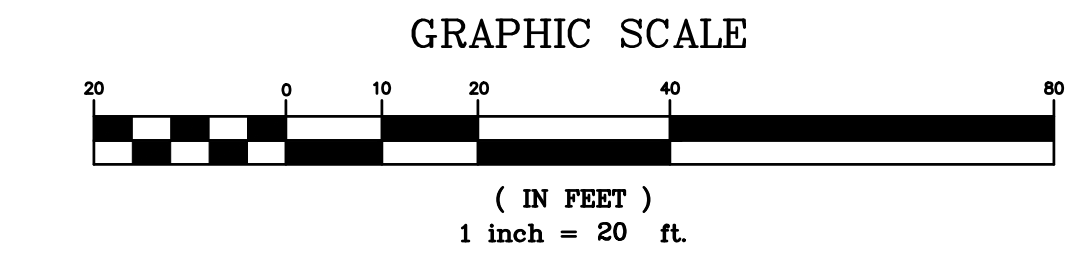


LEGEND	
[Symbol]	CATCH BASIN
[Symbol]	DRAIN MANHOLE
[Symbol]	DRAINLINE
[Symbol]	ROOF DRAIN
[Symbol]	FLOW DIRECTION
[Symbol]	SEWER MANHOLE
[Symbol]	SEWER LINE
[Symbol]	WATER VALVE
[Symbol]	HYDRANT
[Symbol]	WATER LINE
[Symbol]	OVERHEAD ELECTRIC
[Symbol]	UNDERGROUND ELECTRIC
[Symbol]	ELECTRIC METER
[Symbol]	UTILITY POLE
[Symbol]	GAS LINE
[Symbol]	GAS VALVE
[Symbol]	GAS METER
[Symbol]	BOLLARD
[Symbol]	LIGHT POLE
[Symbol]	VCC VERTICAL CONCRETE CURB
[Symbol]	BCC BITUMINOUS CONC. CURB
[Symbol]	SIGN
[Symbol]	METAL GUARDRAIL
[Symbol]	RETAINING WALL
[Symbol]	L.S. LANDSCAPED
[Symbol]	RIVERFRONT LINE
[Symbol]	R3 RIVERFRONT FLAG
[Symbol]	(R.) RECORD LOCATION



- PLAN REFERENCES:**
- 1.) PLAN OF LAND IN NEWTON, MASS., DATED DECEMBER 2, 1953, BY WILLIAM S. CROCKER, CIVIL ENGINEER, DULY RECORDED WITH MIDDLESEX SOUTH DISTRICT DEEDS, BOOK 8196, PAGE 10.
 - 2.) PLAN IN DEED BOOK: 8138 PAGE: 39
 - 3.) PLAN NO. 968 OF 2005
 - 4.) PLAN NO. 1415 OF 1986 RECORDED IN BOOK: 17482 PAGE: END.
 - 5.) PLAN NO. 1144 OF 1987 RECORDED IN BOOK: 18470 PAGE: 347.
 - 6.) PLAN NO. 1415 OF 1986 RECORDED IN BOOK: 17482 PAGE: END.
 - 7.) PLAN NO. 1144 OF 1987 RECORDED IN BOOK: 18470 PAGE: 347.

- NOTES:**
- 1.) INFORMATION SHOWN HEREON IS BASED ON A FIELD SURVEY OF THE PROPERTY BY KELLY ENGINEERING GROUP, INC. IN DECEMBER OF 2016.
 - 2.) BINDER COURSE AND TEMPORARY STRIPING WAS COMPLETE AT TIME OF SURVEY.
 - 3.) RECORD (DESIGN) LOCATIONS OF UNDERGROUND WATER AND GAS SERVICE LOCATIONS ARE SHOWN.
 - 4.) ELEVATIONS SHOWN ARE BASED ON NGVD OF 1929 DATUM.



SCALE 1" = 20'	REV	DATE	REVISION	BY
DATE 01/12/17				
SHEET 1 OF 1				
PLAN NO. 2015-004-AB00				
DISK REF NO. F:\P\2015-004				
DRAWN BY UP/JPM				
CHKD BY SMH				
APPD BY SMH				

CROSSPOINT ASSOCIATES
180, 188, & 210 NEEDHAM STREET
NEWTON, MASSACHUSETTS

AS-BUILT SITE PLAN
AS OF 01/12/17

KELLY ENGINEERING GROUP, INC.
CIVIL ENGINEERING CONSULTANTS
0 CAMPANELLI DRIVE · BRAINTREE MA · 02184
PHONE: 781 843 4333 FAX: 781 843 0028

PROFESSIONAL LAND SURVEYOR

STEVEN M. HORSFALL
No. 41608

SHEET NO.
1

KELLY ENGINEERING GROUP SHALL NOT BE RESPONSIBLE FOR CONSTRUCTION MEANS, METHODS, TECHNIQUES, OR PROCEDURES UTILIZED BY THE CONTRACTOR, NOR FOR THE SAFETY OF PUBLIC OR CONTRACTOR'S EMPLOYEES; OR FOR THE FAILURE OF THE CONTRACTOR TO CARRY OUT THE WORKING ACCORDANCE WITH THE CONTRACT DOCUMENTS.

THE EXTENT OF KELLY ENGINEERING GROUP'S LIABILITY FOR THIS PLAN IS LIMITED TO THE EXTENT OF ITS FEE LESS THIRD PARTY COST

COPYRIGHT (C) by KELLY ENGINEERING GROUP, INC.
All Rights Reserved

NO PART OF THIS DOCUMENT MAY BE REPRODUCED, STORED IN A RETRIEVAL SYSTEM, OR TRANSMITTED IN ANY FORM OR BY ANY MEANS, ELECTRONIC, MECHANICAL, PHOTOCOPYING, RECORDING OR OTHERWISE, WITHOUT THE PRIOR WRITTEN PERMISSION OF KELLY ENGINEERING GROUP. ANY VIOLATIONS TO THIS DOCUMENT, WITHOUT THE WRITTEN PERMISSION OF KELLY ENGINEERING GROUP, SHALL RENDER IT INVALID AND UNENFORCEABLE.