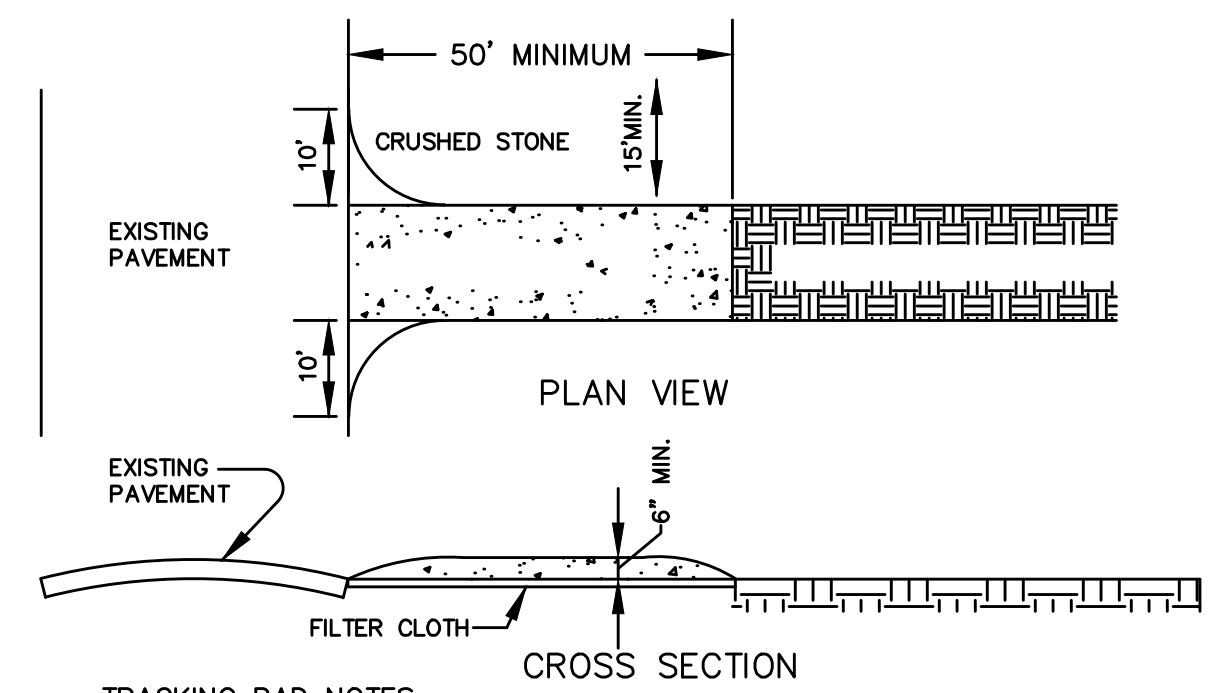
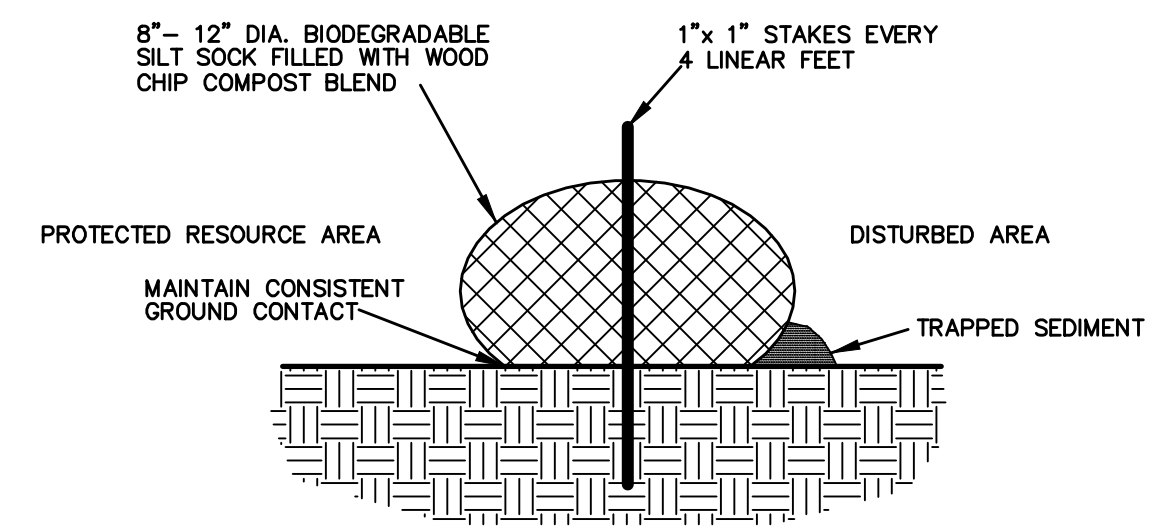
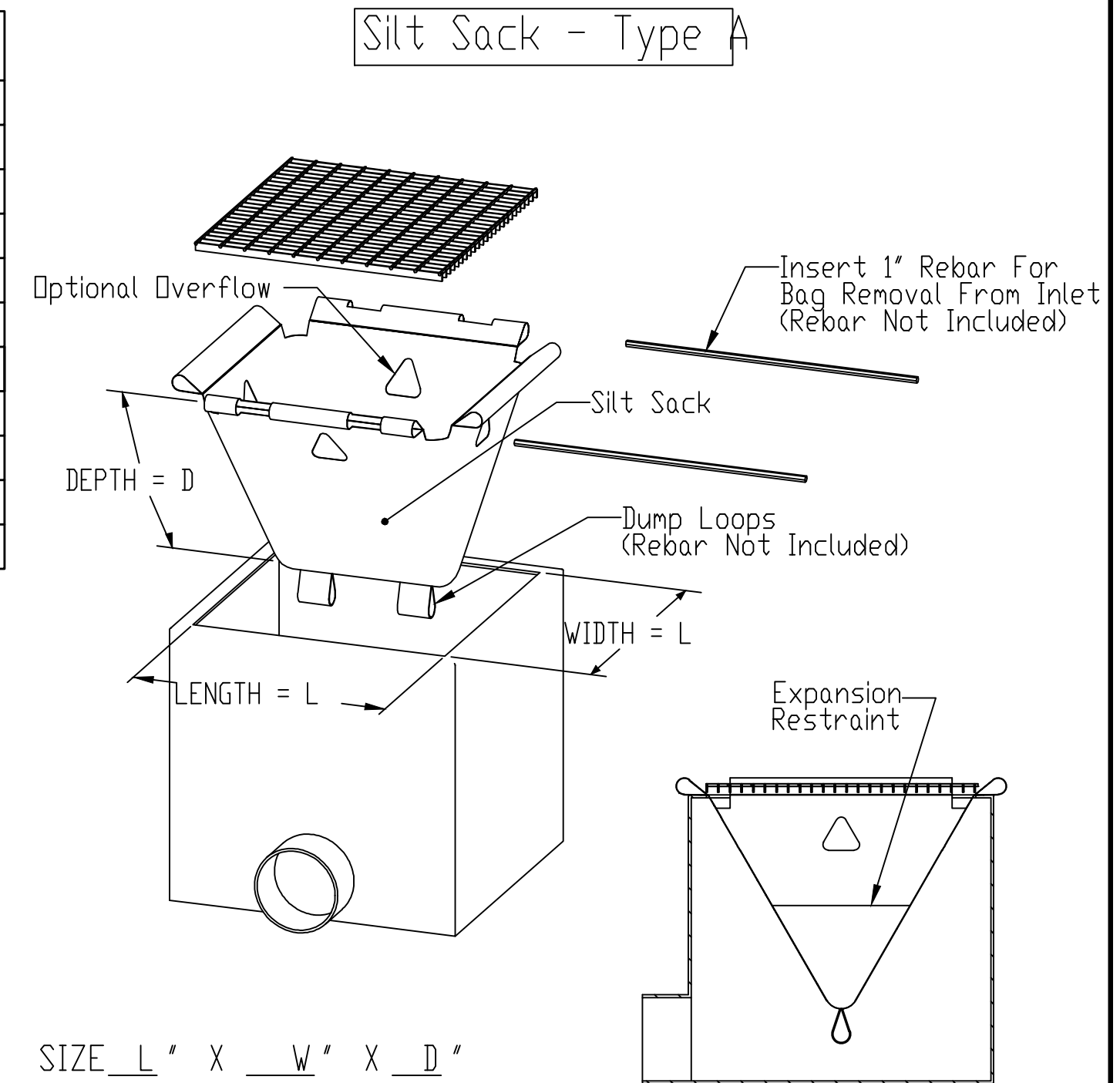


| PROPOSED LEGEND | |
|-----------------|-----------------------|
| □ | CATCH BASIN |
| ⊙ | DRAIN MANHOLE |
| — | DRAIN LINE |
| — RD — | ROOF DRAIN LINE |
| ○ | SEWER CLEAN OUT |
| — SS — | SEWER LINE |
| ⊕ | UTILITY POLE |
| ⊠ | SILT SACK |
| — | EROSION CONTROL LINE |
| - - - | 100' BUFFER TO B.V.W. |
| - - - | 200' RIVERFRONT AREA |



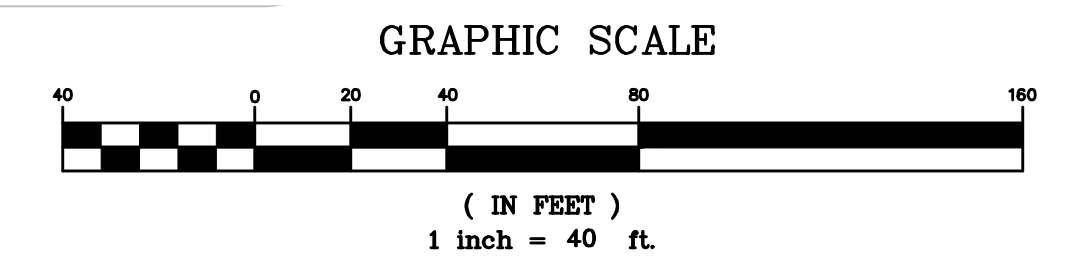
TRACKING PAD NOTES:
 STONE SIZE - USE 2" CRUSHED STONE
 FILTER CLOTH - SHALL BE PLACED OVER THE ENTIRE AREA PRIOR TO PLACING OF STONE.
 SURFACE WATER - ALL SURFACE WATER FLOWING OR DIVERTED TOWARD CONSTRUCTION ENTRANCES SHOULD BE PIPED ACROSS THE ENTRANCE. IF PIPING IS IMPRACTICAL, A MOUNTABLE BERM SHOULD BE PERMITTED.
 MAINTENANCE - THE ENTRANCE SHALL BE MAINTAINED IN A CONDITION WHICH PREVENTS TRACKING OR FLOWING OF SEDIMENT ONTO PUBLIC RIGHTS-OF-WAY. THIS MAY REQUIRE PERIODIC TOP DRESSING WITH ADDITIONAL STONE AS CONDITIONS DEMAND AND REPAIR OR CLEANING OF ANY MEASURES USED TO TRAP SEDIMENT. ALL SEDIMENT SPILLED, DROPPED, WASHED OR TRACKED ONTO PUBLIC RIGHTS-OF-WAY MUST BE REMOVED IMMEDIATELY.



- NOTES:
- AT THE END OF EACH WORK DAY, THE OPERATOR SHALL MECHANICALLY SWEEP OR MANUALLY SWEEP SEDIMENTS FROM THE STREET, UNLESS TRACKING AND SEDIMENT IS NOT EVIDENT.
 - ANY DEBRIS, SEDIMENT OR OTHER MATERIALS THAT FALL INTO A RESOURCE AREA SHALL BE IMMEDIATELY REMOVED BY HAND.
 - DUMPSTERS SHALL BE BROUGHT TO THE SITE WHILE CONSTRUCTION IS ONGOING AND SHALL BE USED FOR ALL CONSTRUCTION/BUILDING DEBRIS. THIS SHALL BE REGULARLY EMPTIED SUCH THAT MATERIALS DO NOT SPILL ONTO THE GROUND. DUMPSTERS SHALL BE COVERED AT NIGHT.
 - NO DETERIORATION IS PERMITTED UNLESS THE CONSERVATION COMMISSION AND/OR DEPARTMENT OF PUBLIC WORKS HAS RECEIVED AND APPROVED, OR APPROVED WITH MODIFICATIONS, A DETERIORATION PLAN. ANY TEMPORARY SETTLING BASINS TO BE CONSTRUCTED SHALL BE PRE-APPROVED BY THE CONSERVATION COMMISSION.
 - TEMPORARY DRAINAGE DIVERSIONS SHALL NOT BE ALLOWED WITHOUT PRIOR APPROVAL FROM THE CONSERVATION COMMISSION.
 - ALL WORK SHALL COMPLY TO A CITY OF NEWTON'S CONSERVATION COMMISSION'S ORDER OF CONDITIONS.

- THE CONTRACTOR SHALL REGULARLY INSPECT THE PERIMETER OF THE PROPERTY TO CLEANUP AND REMOVE LOOSE CONSTRUCTION DEBRIS BEFORE IT LEAVES THE SITE. ALL DEMOLITION DEBRIS SHALL BE PROMPTLY REMOVED FROM THE SITE TO A LEGAL DUMP SITE. ALL TRUCKS LEAVING THE SITE SHALL BE COVERED.
- IT SHALL BE THE RESPONSIBILITY OF THE CONTRACTOR TO INSTITUTE EROSION CONTROL MEASURES ON AN AS NECESSARY BASIS, SUCH THAT EXCESSIVE SOIL EROSION DOES NOT OCCUR. MEASURES SHALL INCLUDE HAY BALE DIKES AROUND DRAINAGE INLETS, MULCHING AND PLANTING OF DISTURBED AREAS.
- PRIOR TO THE COMMENCEMENT OF ANY OTHER WORK A SILT SACK SHALL BE INSTALLED IN EACH EXISTING DRAINAGE INLET.
- AFTER INSTALLATION OF EACH DRAINAGE INLET A SILT SACK SHALL BE INSTALLED IN EACH INLET TO PREVENT SEDIMENT FROM ENTERING THE STORM DRAIN SYSTEM.
- AT THE END OF CONSTRUCTION ALL DRAINAGE STRUCTURES ARE TO BE CLEANED OF SILT, STONES AND OTHER DEBRIS.
- DURING CONSTRUCTION THE EROSION CONTROL MEASURES SHALL BE INSPECTED ONCE PER WEEK AND WITHIN 24 HOURS OF ANY STORM EVENT GENERATING MORE THAN 1/2" OF RAINFALL. THE EROSION CONTROL MEASURES SHALL BE CLEANED REGULARLY AND ADJUSTED IF NECESSARY TO ENSURE THAT NO SILT OR DEBRIS LEAVES THE SITE.

THIS PRELIMINARY EROSION CONTROL PLAN IS ONLY A GUIDE. THE EROSION CONTROL PLAN SHALL BE COMPLETED IN CONJUNCTION WITH THE SITE CONTRACTOR AS PART OF THE STORMWATER POLLUTION PREVENTION PLAN.



| | | | | |
|--|---------------------------|-------------------------------|--------------------|-----------------------|
| SCALE 1" = 40' | DATE 03/04/15 | REV 1 | DATE 03/30/15 | PER CITY COMMENTS |
| SHEET 1 OF 1 | PLAN NO. 2013-075-EC00 | DISK REF NO. F:\P\2013-075 | DRAWN BY C.J.L. | CHKD BY B.G.L. |
| CROSSPOINT ASSOCIATES, INC. 131, 141-143, 151-153, 165, 173, & 181 NEEDHAM ST. NEWTON, MASSACHUSETTS PRELIMINARY EROSION CONTROL PLAN | | | | SHEET NO. 1 |
| KELLY ENGINEERING GROUP, INC. CIVIL ENGINEERING CONSULTANTS 0 CAMPANELLI DRIVE • BRAINTREE MA • 02184 PHONE: 781 843 4333 FAX: 781 843 0028 | | | | |

KELLY ENGINEERING GROUP SHALL NOT BE RESPONSIBLE FOR CONSTRUCTION MEANS, METHODS, TECHNIQUES, OR PROCEDURES UTILIZED BY THE CONTRACTOR FOR THE SAFETY OF PUBLIC OR CONTRACTOR'S EMPLOYEES OR FOR THE FAILURE OF THE CONTRACTOR TO CARRY OUT THE WORKING ACCORDANCE WITH THE CONTRACT DOCUMENTS.
 THE EXTENT OF KELLY ENGINEERING GROUP'S LIABILITY FOR THIS PLAN IS LIMITED TO THE EXTENT OF ITS FEE LESS THIRD PARTY COST.
 COPYRIGHT (C) BY KELLY ENGINEERING GROUP, INC.
 All Rights Reserved
 NO PART OF THIS DOCUMENT MAY BE REPRODUCED, STORED IN A RETRIEVAL SYSTEM, OR TRANSMITTED IN ANY FORM OR BY ANY MEANS, ELECTRONIC, MECHANICAL, PHOTOCOPYING, RECORDING OR OTHERWISE, WITHOUT THE PRIOR WRITTEN PERMISSION OF KELLY ENGINEERING GROUP AND REPRESENTATIONS TO THIS DOCUMENT VIOLATE THE WRITTEN PERMISSION OF KELLY ENGINEERING GROUP, WHICH REMAINS IN FULL FORCE AND EFFECT.