

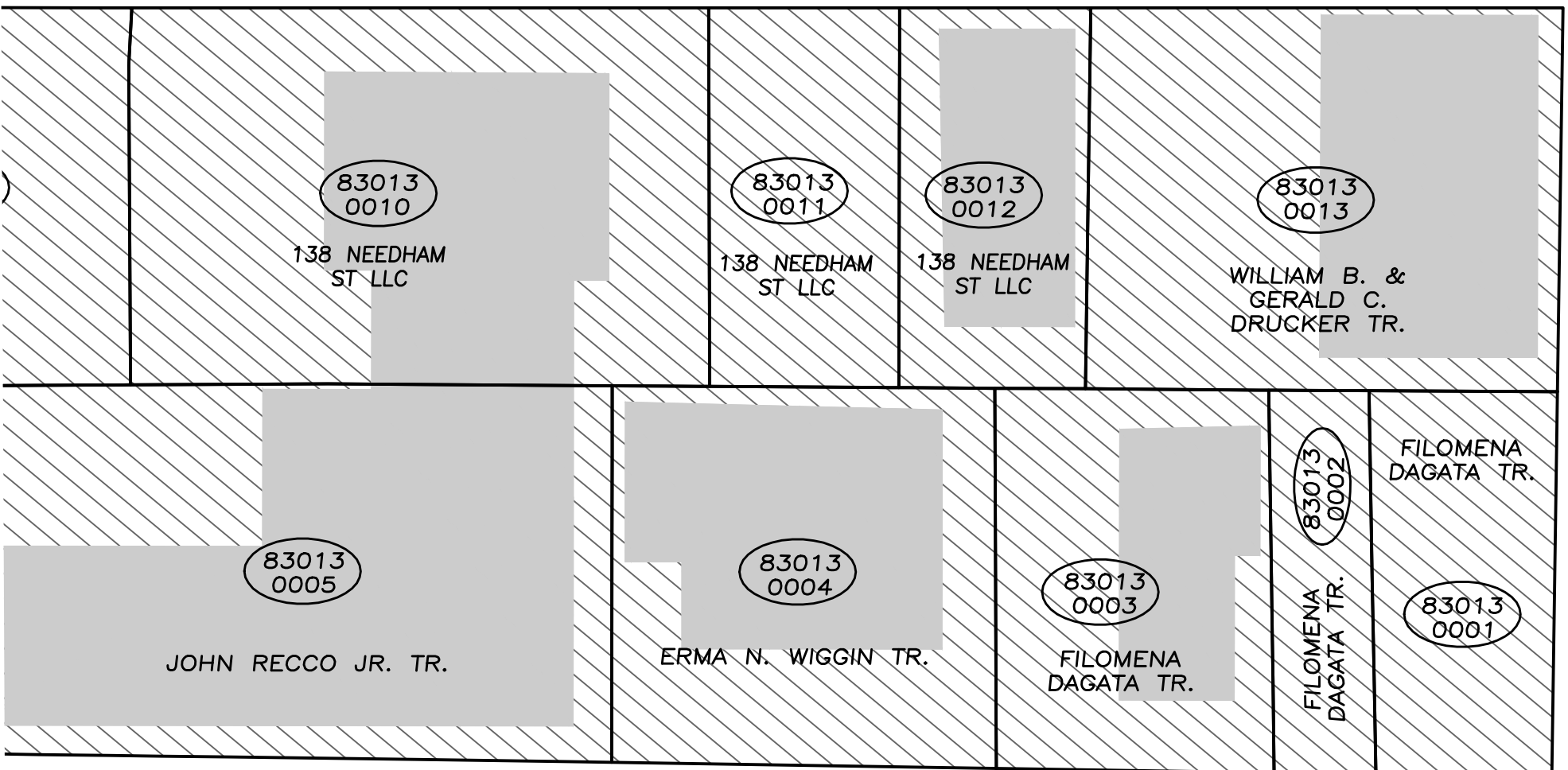
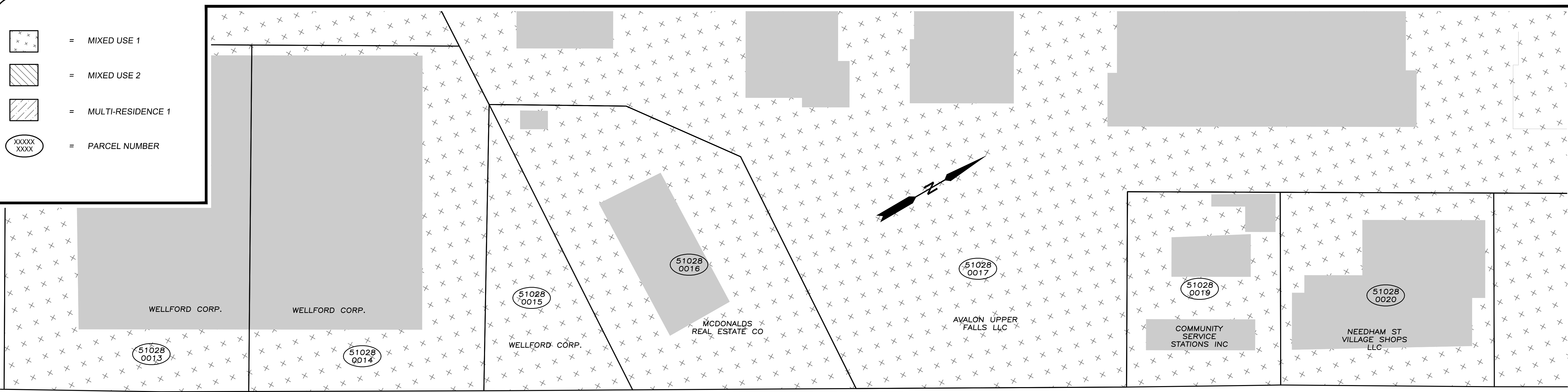
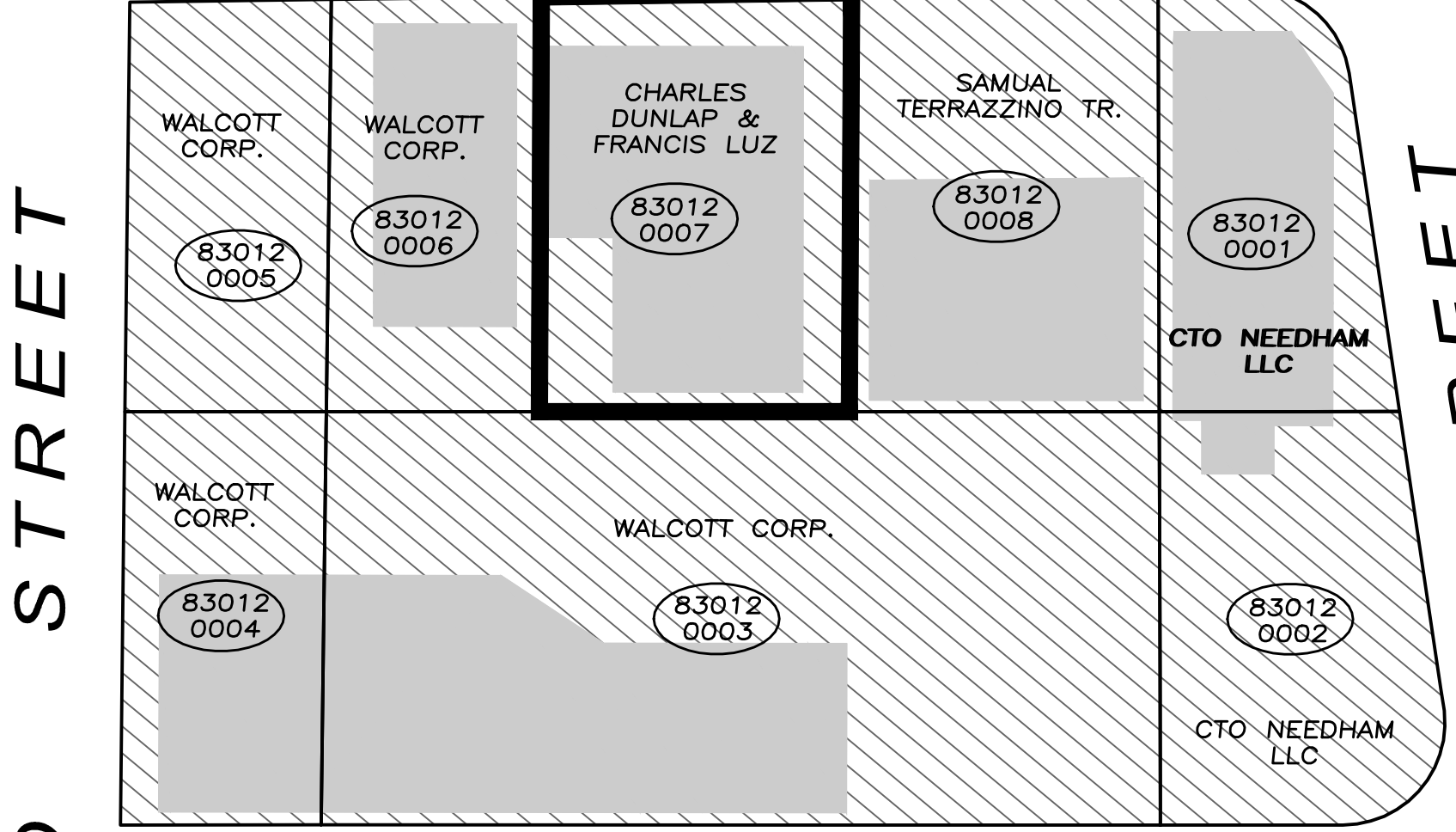


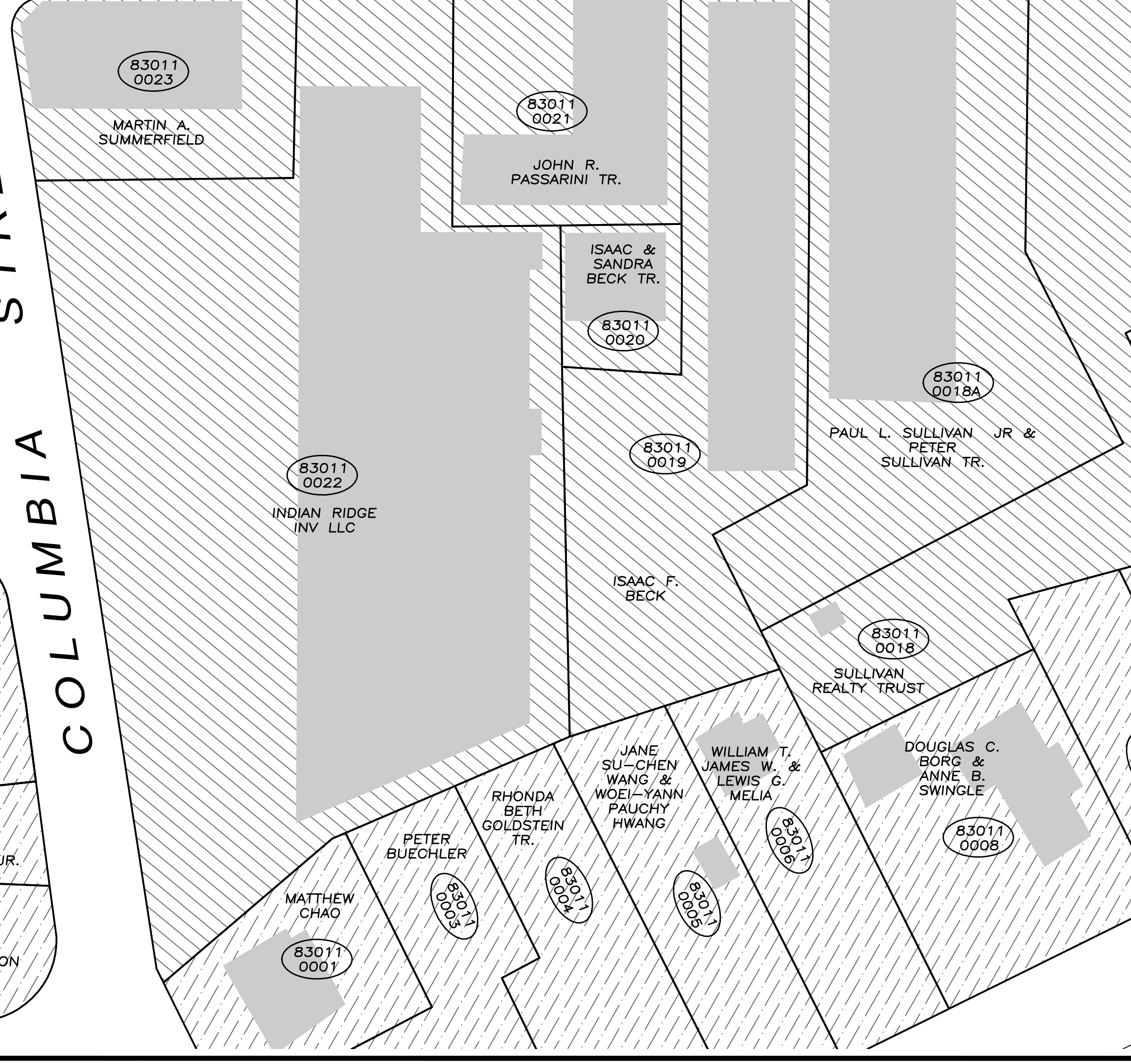
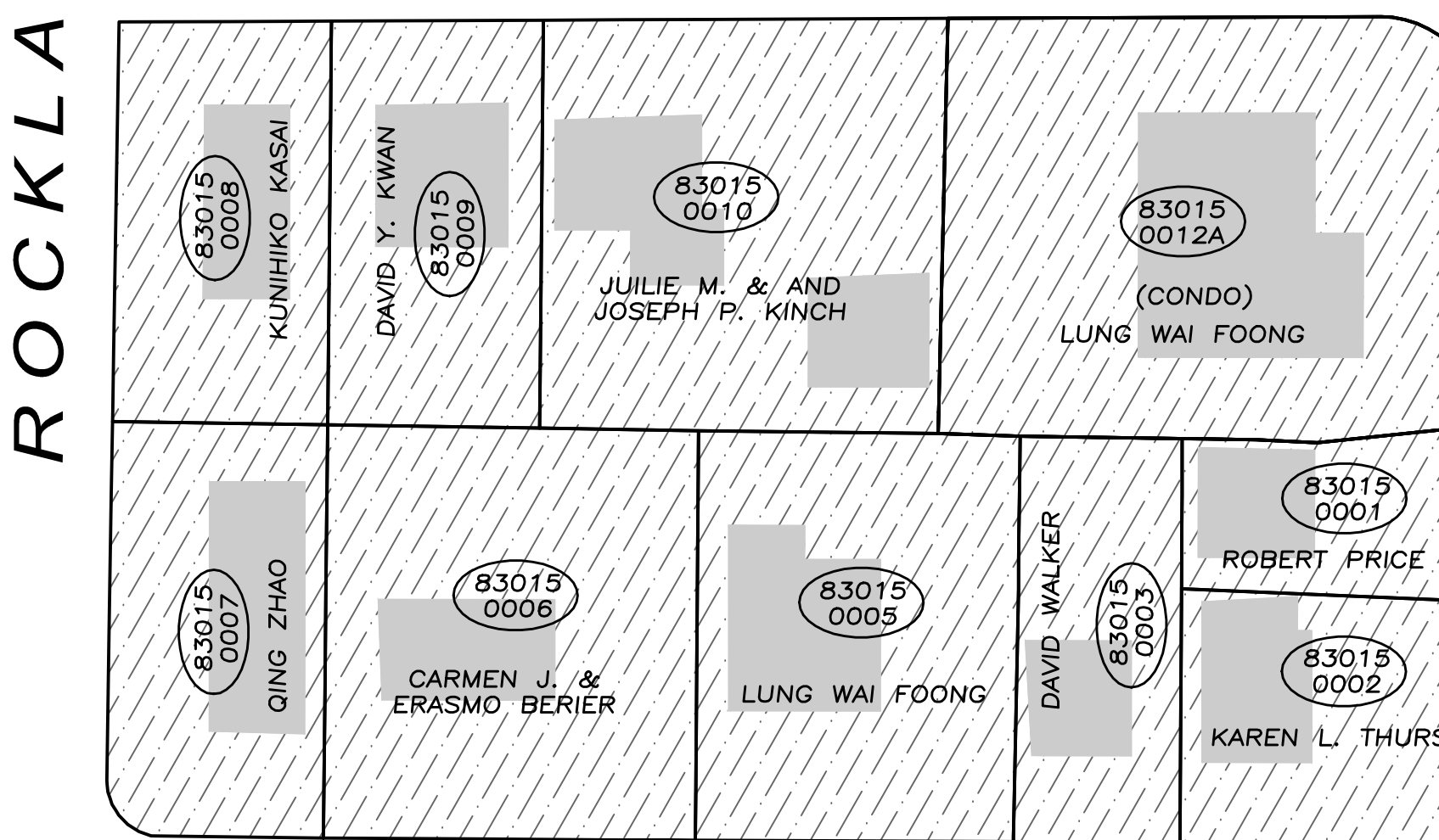
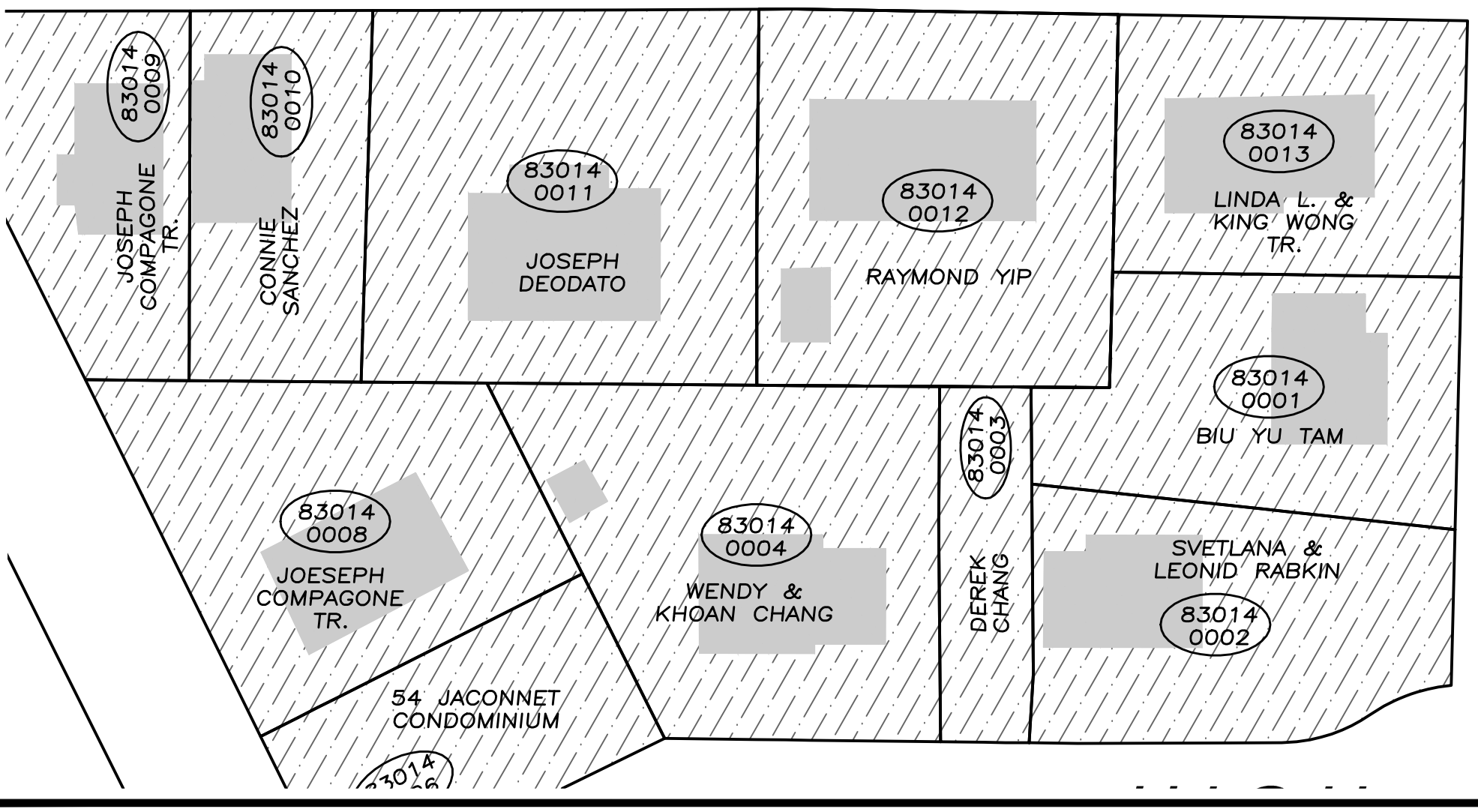
-  = MIXED USE 1
-  = MIXED USE 2
-  = MULTI-RESIDENCE 1
-  = PARCEL NUMBER



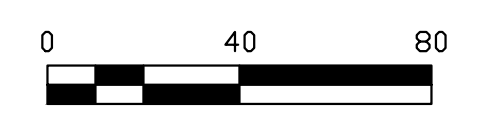
NEEDHAM STREET



KENNETH STREET



NOTE: INFORMATION SHOWN HEREON IS COMPILED FROM CITY OF NEWTON ASSESSORS MAP AND THE CITY OF NEWTON'S GIS (GEOGRAPHICAL INFORMATION SYSTEM) DATABASE AND DOES NOT REPRESENT A TRUE ON THE GROUND SURVEY.



| REVISION | DATE |
|----------|------|
|          |      |
|          |      |
|          |      |
|          |      |

**PARCEL MAP**  
**112 Needham Street**  
 Newton, Massachusetts  
 Drawn By: DE A Job: RPH32  
 Checked By: SDC Dwg: 4047  
 Scale: 1" = 20'  
 Date: 07/01/14  
 8-14-14 ZONING INFO 4/29/2014 JOB NO. 4047

**R.E. Cameron & Associates, Inc.**  
 Land Surveyors Civil Engineers  
 681 Washington Street, Norwood Massachusetts 02062  
 Tel: (781) 769-1777 Fax: (781) 769-8644

