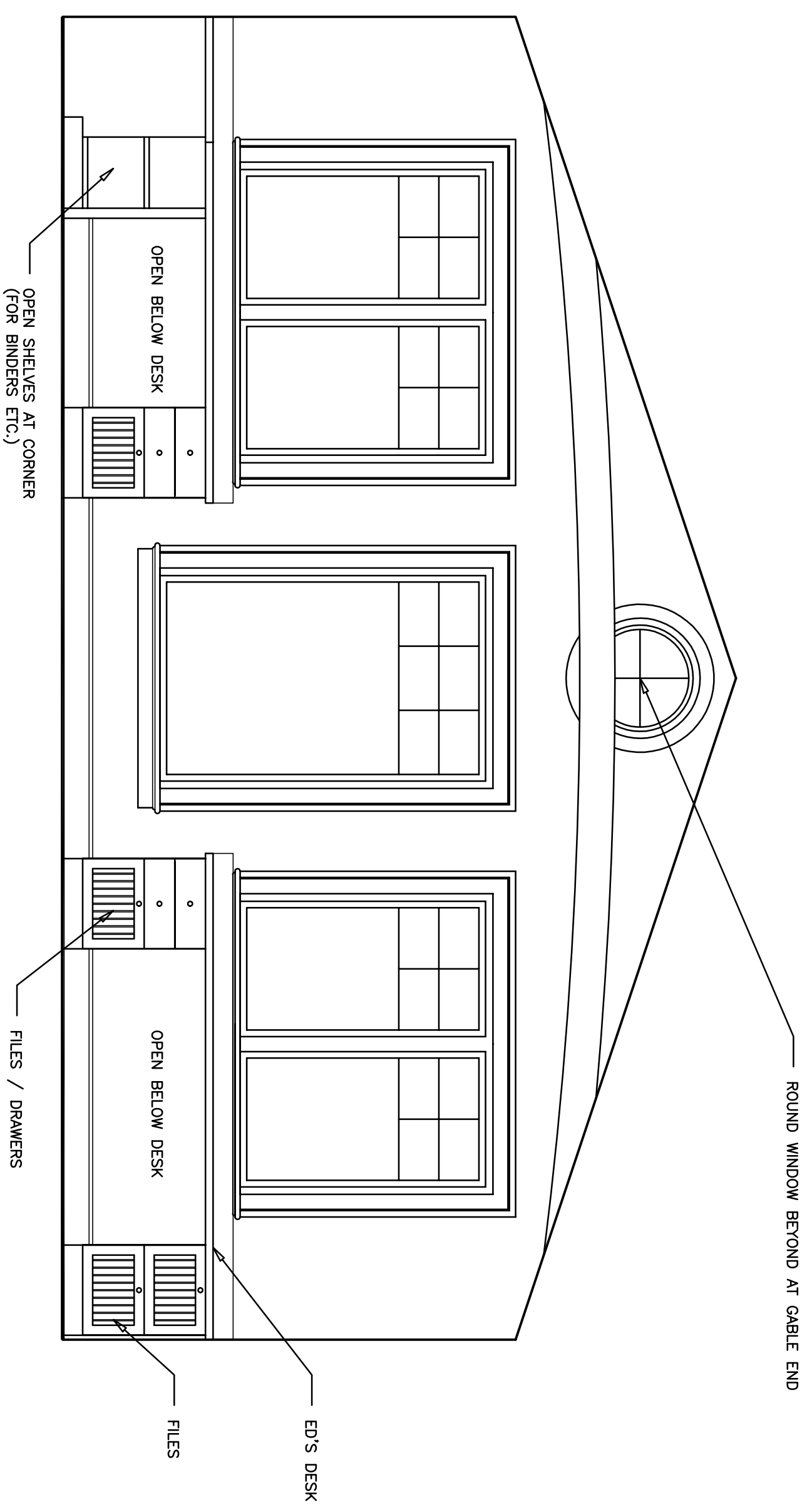
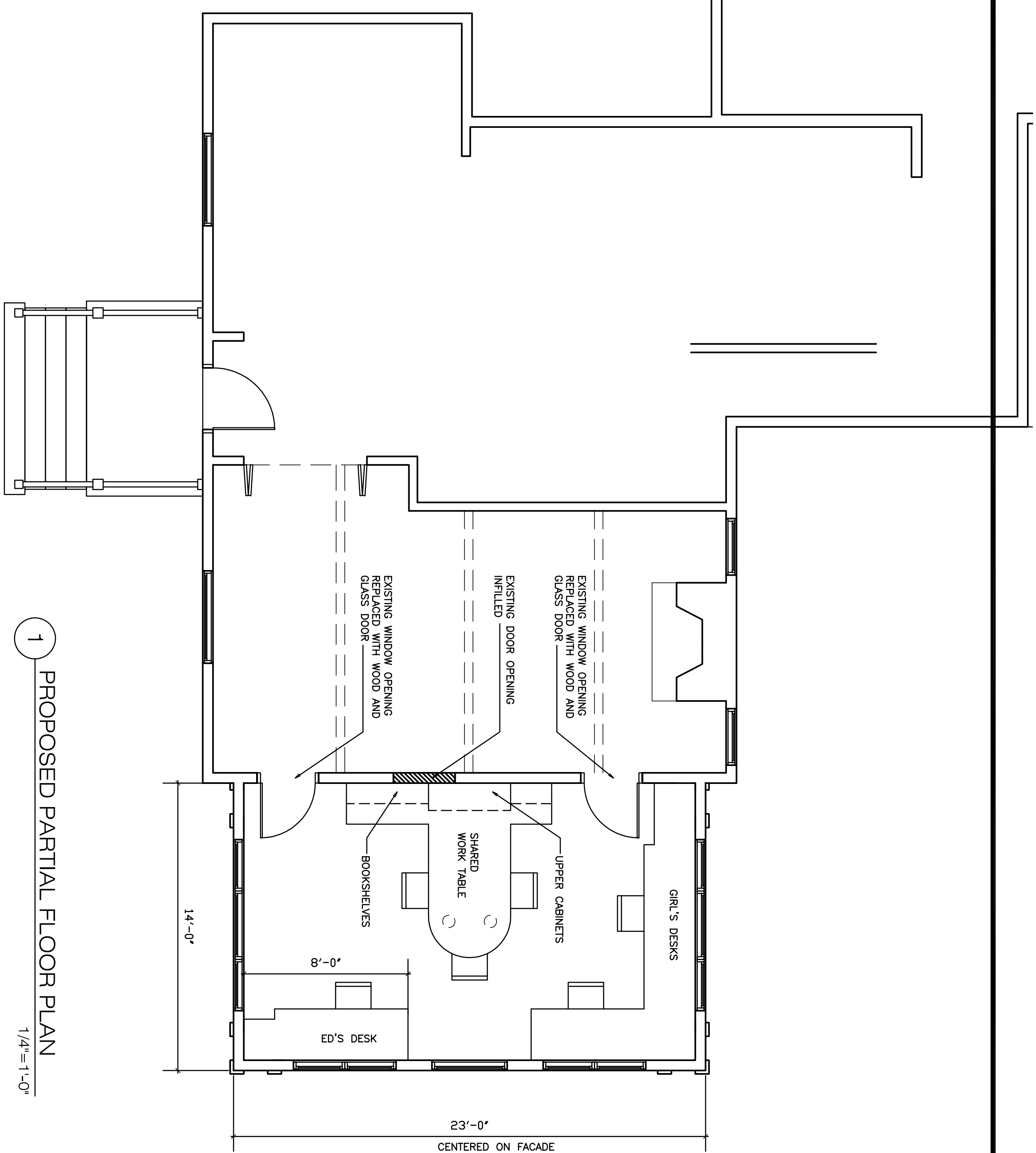


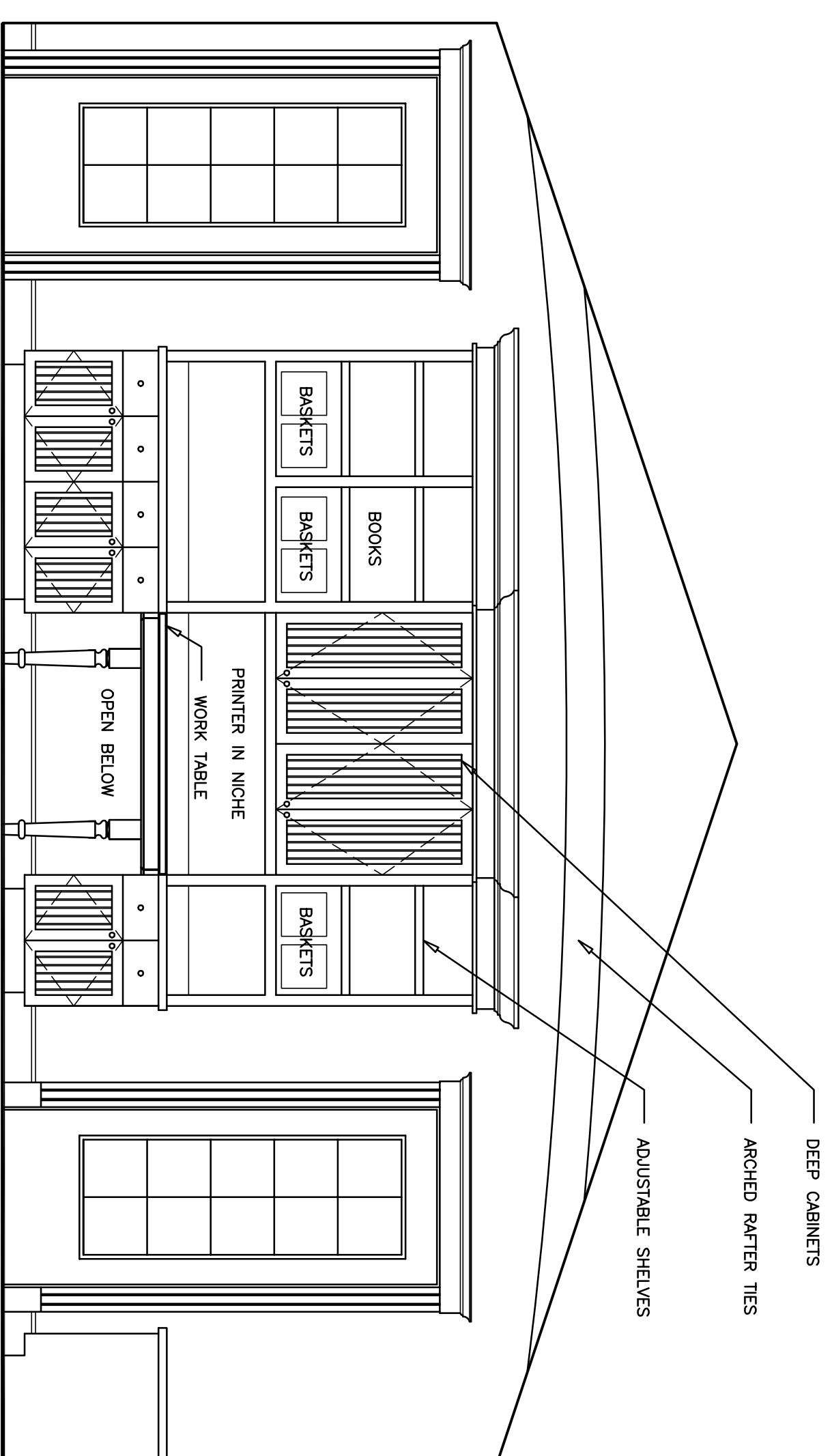
2 ELEVATION LOOKING TOWARD REAR YARD
1/2"=1'-0"



3 ELEVATION AT GABLE END WINDOWS
1/2"=1'-0"



1 PROPOSED PARTIAL FLOOR PLAN
1/4"=1'-0"



4 ELEVATION AT INTERIOR WALL
1/2"=1'-0"

NO. DATE REVISION

RBL RICHARD B. LEVEY architects
2 Summer Street, Suite 4
Natick, MA 01760
Phone/Fax: 508.653.1024
rblarchitect@juno.com

BELZ
RESIDENCE

14 LORING ST.
NEWTON, MA

PROPOSED
FLOOR PLAN,
INTERIOR
ELEVATIONS

DATE 9/19/11

SCALE AS NOTED

DRAWN: RBL

A3