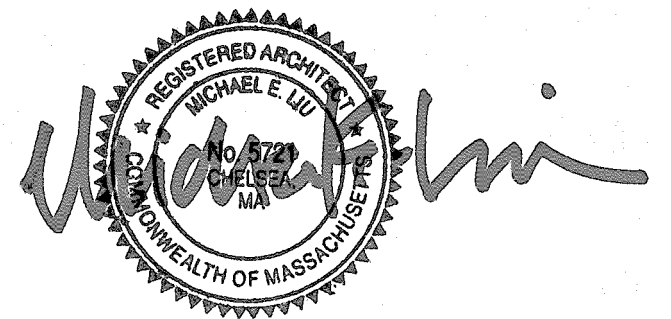


Consultant:

Revision:

Architect of Record:



Drawn: S.B.

Checked: T.E.S.

Scale: 1/8" = 1'-0"

Key Plan:

Project Name:

Kessler Woods

Sheet Name:

BUILDING ELEVATIONS

Project Number:

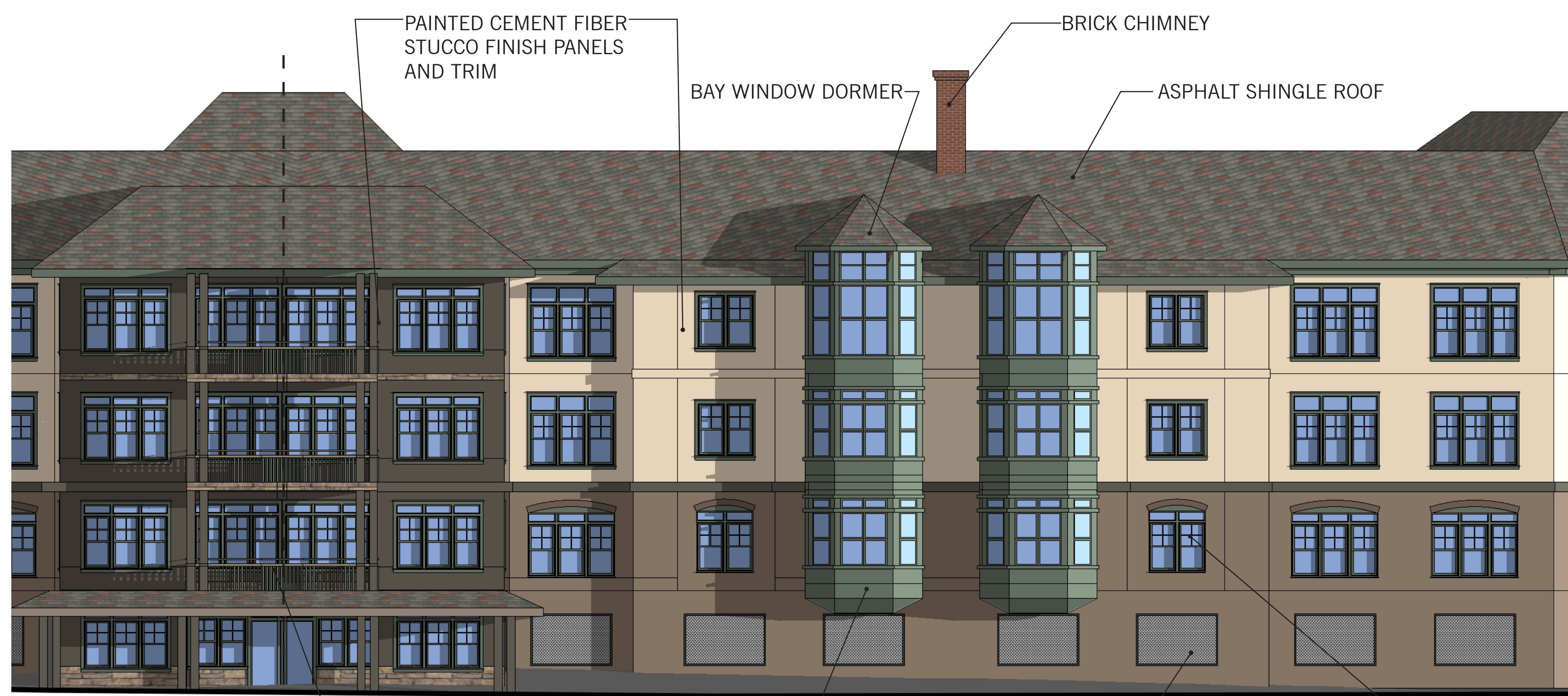
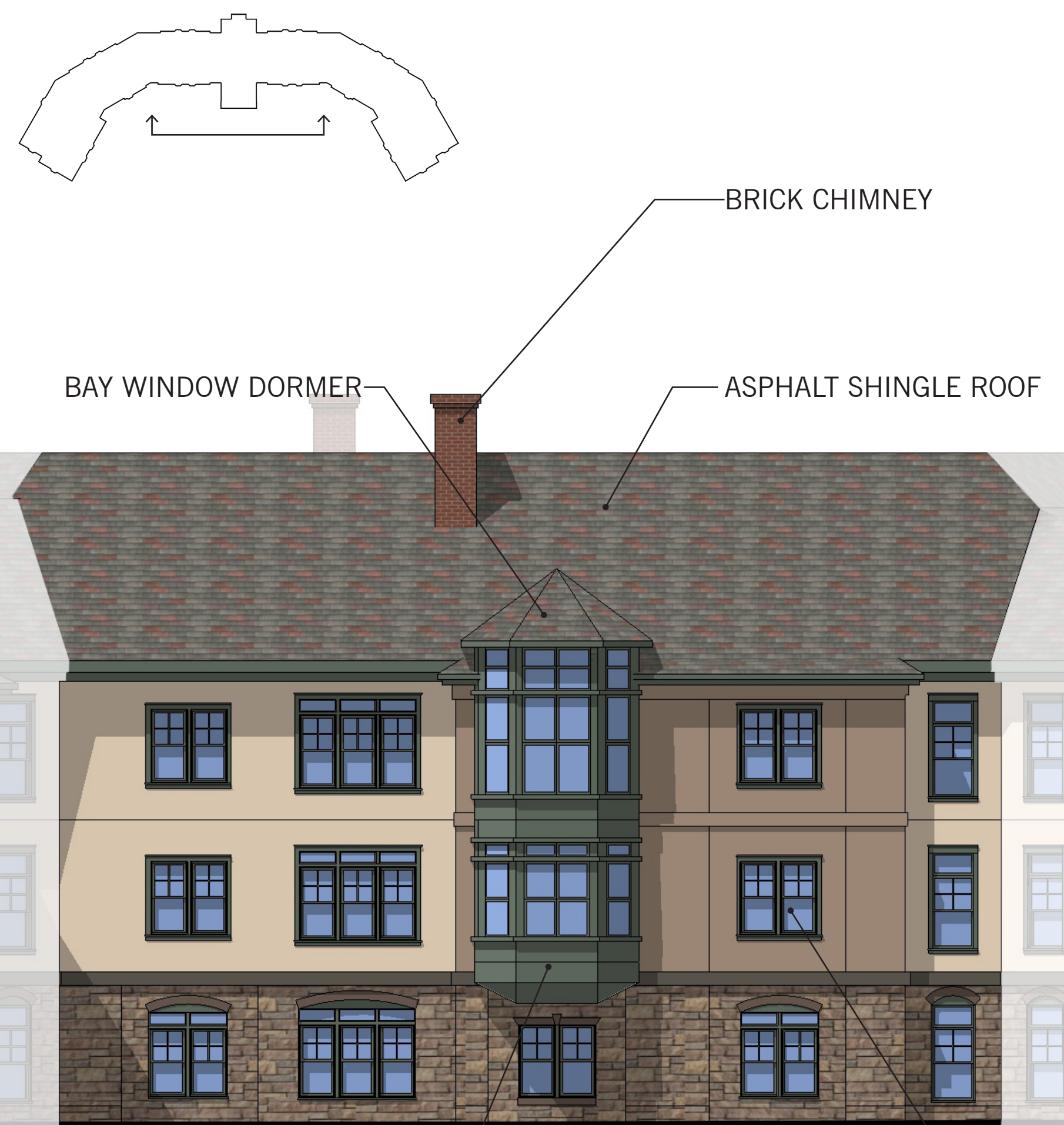
14003

Issue Date:

October 24, 2014

Sheet Number:

A4.01



Friday, August 01, 2014 3:15:25 PM P:\14003-Kessler Woods CHR\Drawings\Working\CAD\Plot Files\14003_A4.01 - ELEVATIONS.dwg

Consultant:

Revision:

Architect of Record:

Drawn: S.B.

Checked: T.E.S.

Scale: 1/8" = 1'-0"

Key Plan:

Project Name:

Kessler Woods

Sheet Name:

BUILDING ELEVATIONS

Project Number:

14003

Issue Date:

October 24, 2014

Sheet Number:

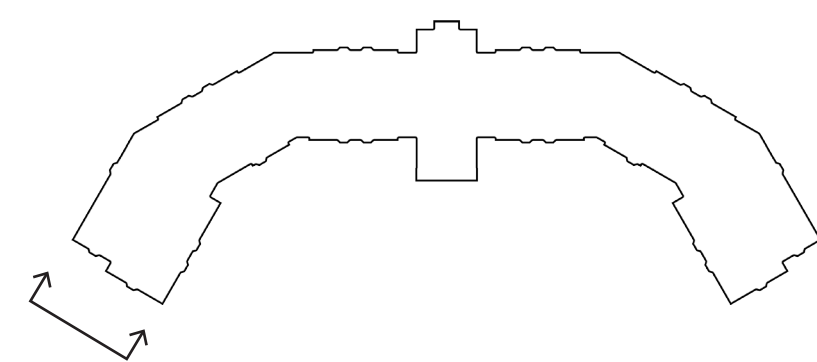
A4.02

- ROOF TOP
245'-0"
- ROOF MID-POINT
235'-0"
- ROOF EVE
227'-0"
- THIRD FLOOR
217'-2"
- SECOND FLOOR
206'-1"
- FIRST FLOOR
195'-0"
- GARAGE FLOOR
185'-0"



BAY WINDOWS,
PAINTED CEMENT FIBER
PANELS AND TRIM

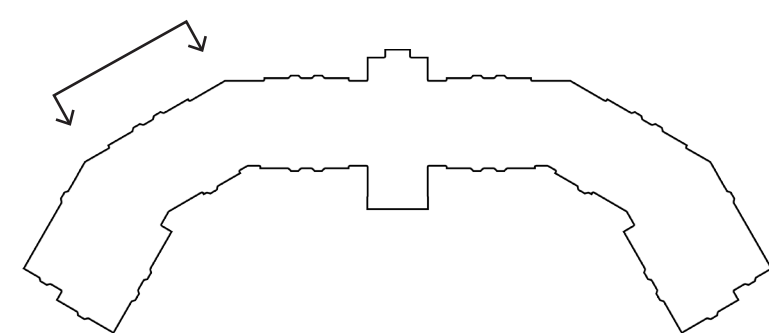
DOUBLE-HUNG WINDOWS



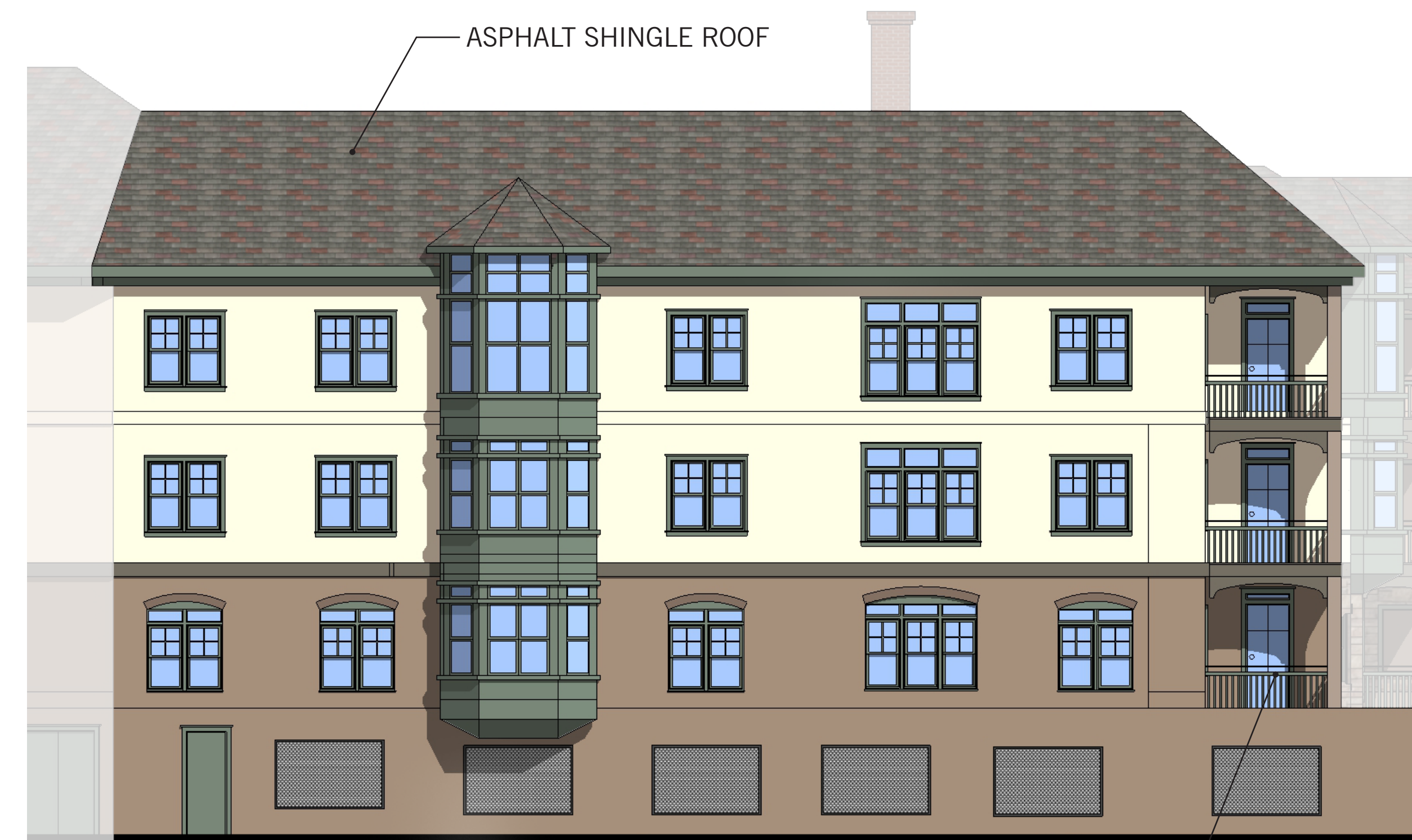
PAINTED CEMENT FIBER
STUCCO FINISH PANELS
AND TRIM



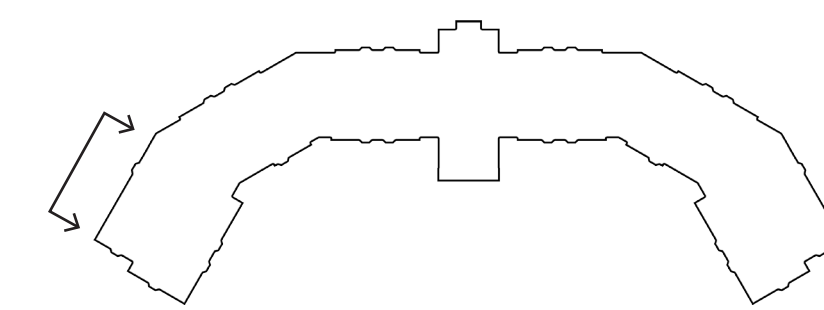
MESH PANELS



ASPHALT SHINGLE ROOF



PAINTED WOOD BALCONY



BRICK CHIMNEY

BAY WINDOW DORMER

ASPHALT SHINGLE ROOF

