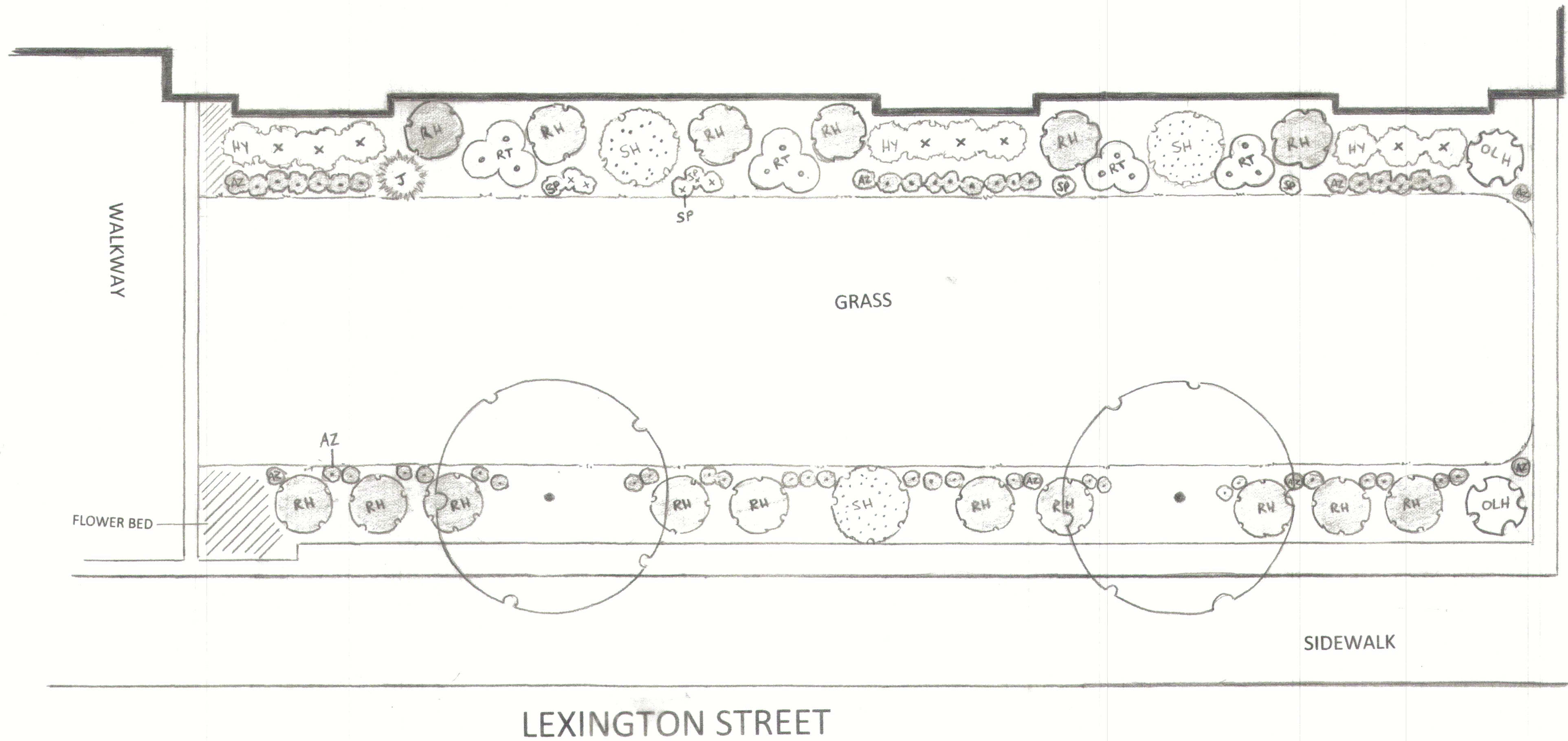


Landscape Plan for: 15-21 Lexington Street Newton MA 02465		
SCALE: 1"=10'	APPROVED BY:	DRAWN BY:
DATE:		REVISED:
The Garden Artisan CO: Antonio Mariano MCLP		
P1		DRAWING NUMBER

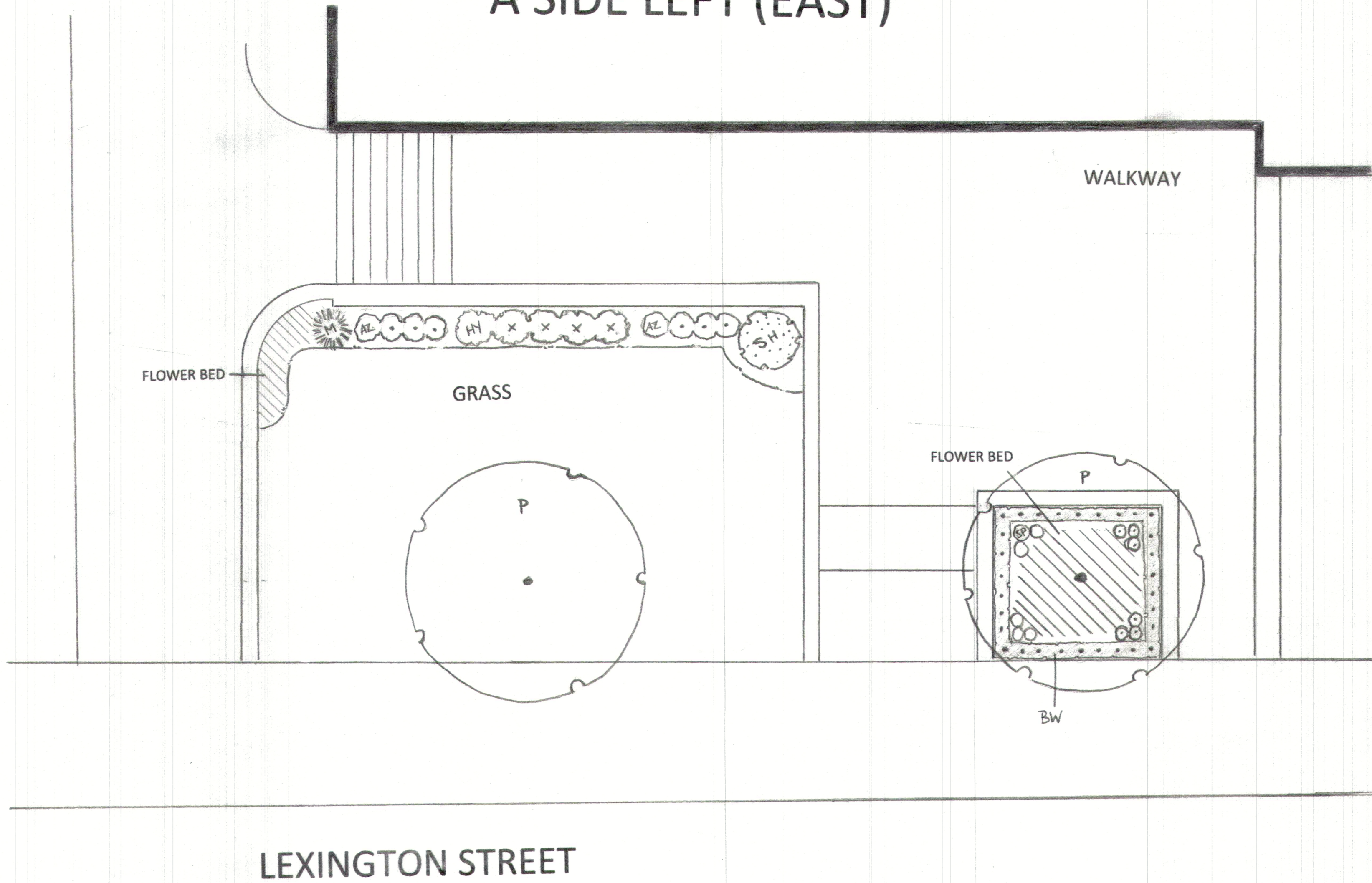
A SIDE RIGHT (EAST)



A SIDE (FRONT RIGHT)			
CODE	VARIETY	QNTY	SIZE
SH	Viburnum 'Shasta'	3	5-6'
HYD	Hydrangea Macrophylla 'Endless Summer'	11	7 gal.
RH2	Rhododendron 'Roseum Elegans'	16	3.5-4'
J	Juniper 'Sea Green'	1	5 gal.
SP	Spirea 'Little Princess'	8	3 gal.
AZ	Azalea 'Tradition Pink'	53	3 gal.
OLH	Hydrangea Quercifolia 'Alice'	1	4-5'
RT	Cornus Alba 'Ivory Halo'	9	5 gal.
P	Flowering Pear 'Aristocrat'	2	3.5-4" cal

Landscape Plan for: 15-21 Lexington Street Newton MA 02465		
SCALE: 1"=10'	APPROVED BY:	DRAWN BY:
DATE:		REVISED:
The Garden Artisan CO: Antonio Mariano MCLP		
P2		DRAWING NUMBER

A SIDE LEFT (EAST)

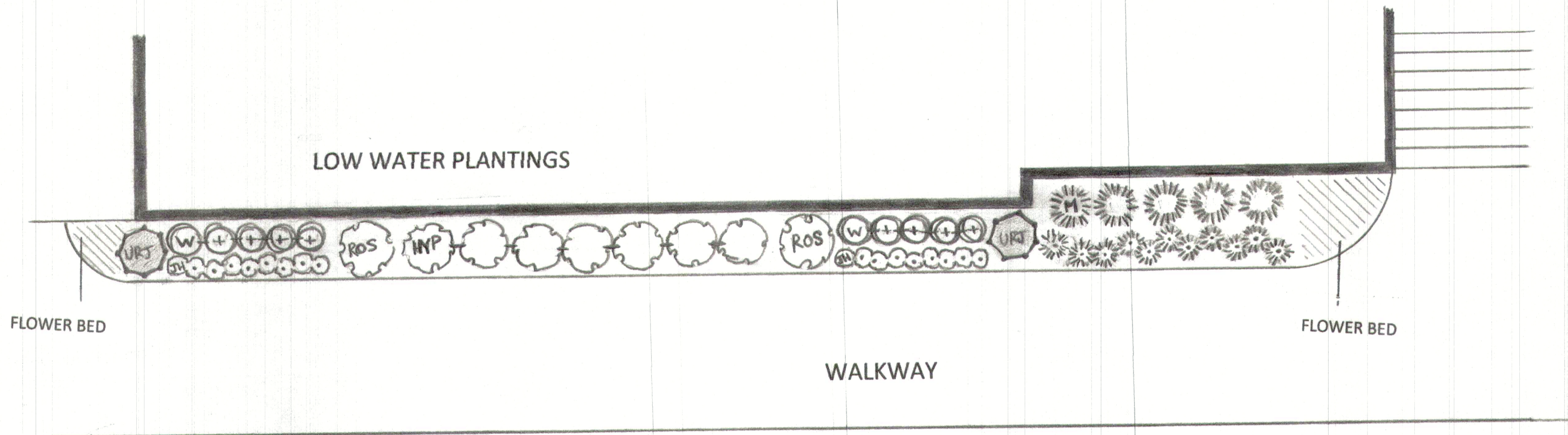


A SIDE (FRONT LEFT)			
CODE	VARIETY	QNTY	SIZE
SH	Viburnum 'Shasta'	1	5-6'
HYD	Hydrangea Macrophylla 'Endless Summer'	5	7 gal
SP	Spirea 'Little Princess'	6	3 gal
AZ	Azalea 'Tradition Pink'	8	3 gal
BW	Buxus Microphylla 'Korean Boxwood'	30	5 gal.
M	Miscanthus 'Morning Light'	1	3 gal.
P	Flowering Pear 'Aristocrat'	2	3.5-4" cal.

Landscape Plan for: **15-21 Lexington Street**
Newton MA 02465

SCALE: 1"=10'	APPROVED BY:	DRAWN BY:
DATE:		REVISED:
The Garden Artisan CO: Antonio Mariano MCLP		
P3		DRAWING NUMBER

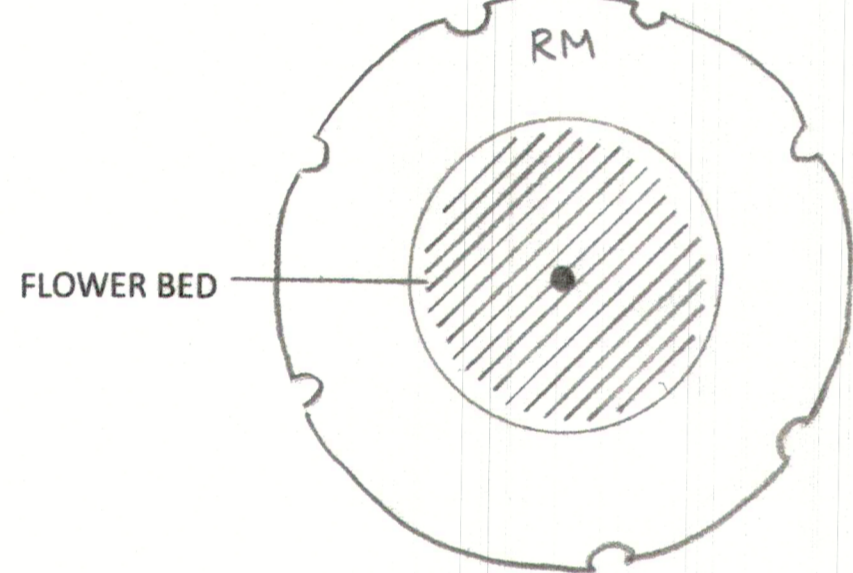
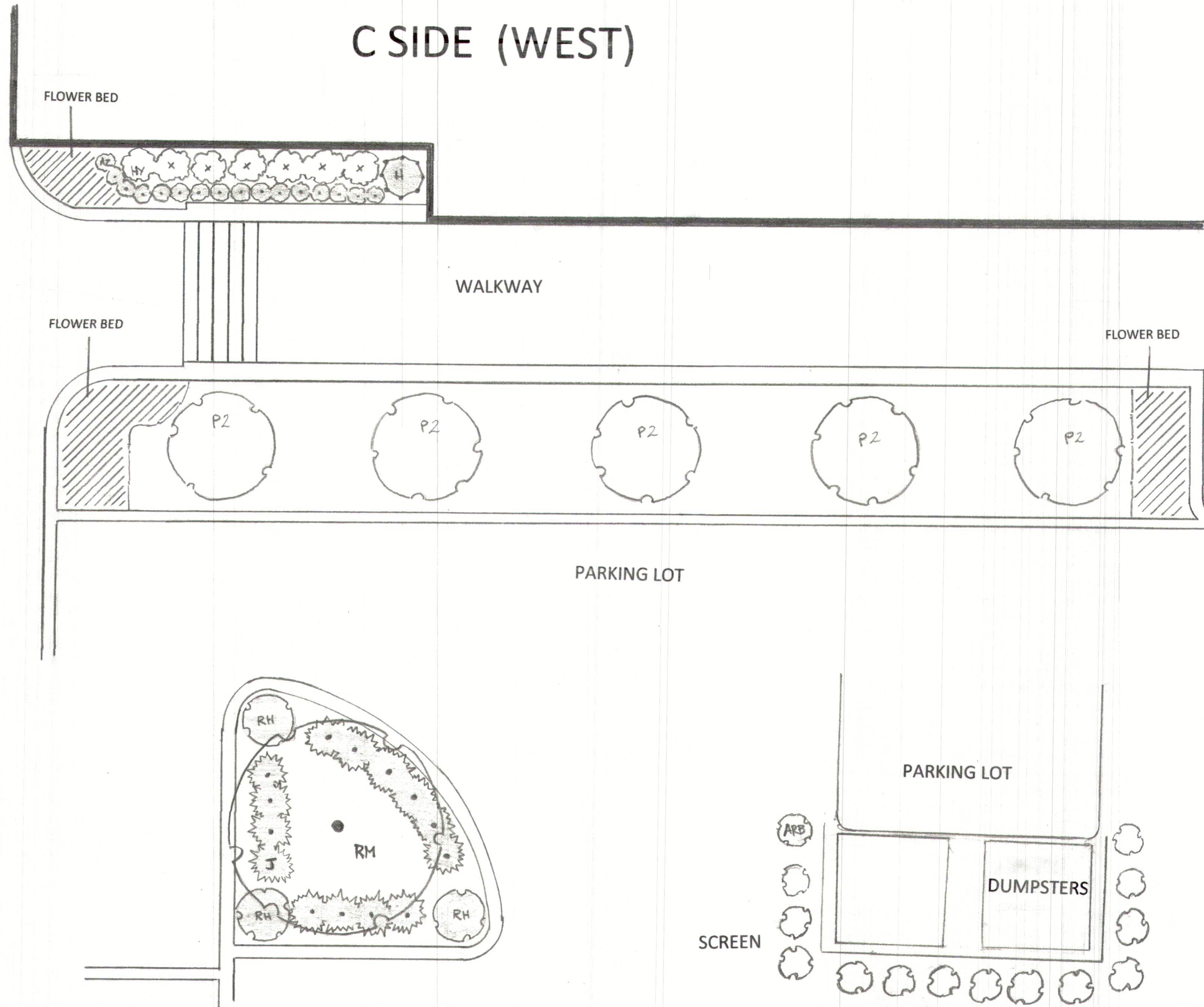
B SIDE (SOUTH)



B SIDE (SOUTH)			
CODE	VARIETY	QNTY	SIZE
M	Miscanthus 'Morning Light'	5	3 gal
HAM	Miscanthus 'Hameln'	12	3 gal.
URJ	Juniperus 'Taylor' upright juniper	2	7-8'
ROS	Hibiscus Rose of Sharon 'Red Heart' tree form	2	10 gal.
W	Weigela Florida 'Wine and Roses'	10	3 gal.
HYP	Hydrangea Paniculata 'little lime'	7	7 gal.
JH	Juiperus horizontalis 'blue rug juniper	18	3 gal.

Landscape Plan for: 15-21 Lexington Street Newton MA 02465		
SCALE: 1"=10'	APPROVED BY:	DRAWN BY:
DATE:		REVISED:
The Garden Artisan CO: Antonio Mariano MCLP		
P4		DRAWING NUMBER

C SIDE (WEST)

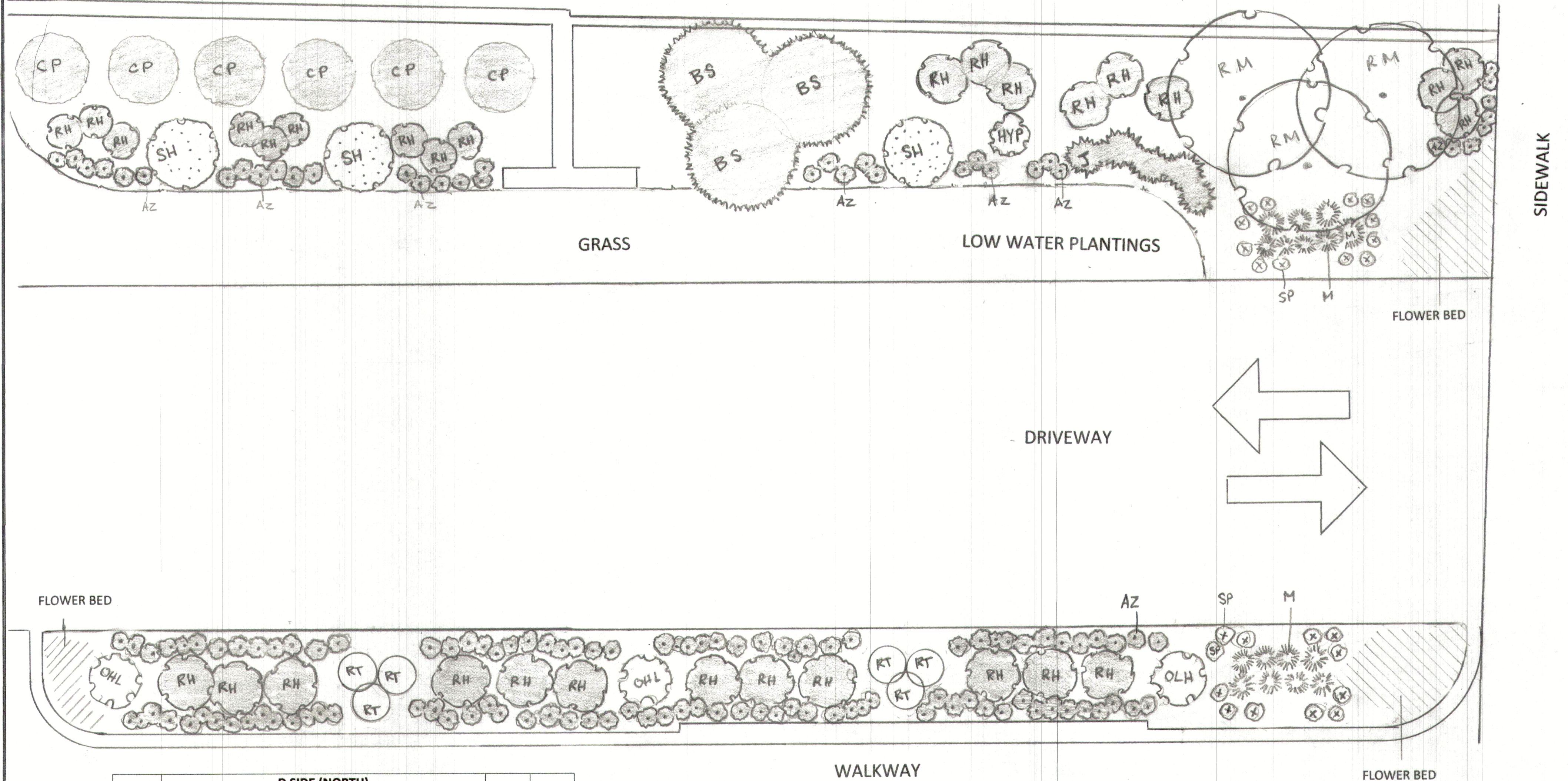


C SIDE (WEST)			
CODE	VARIETY	QNTY	SIZE
P2	Flowering pear 'Capital'	5	3" cal.
RM	Acer Rubrum 'Autumn Spire' Red Maple	2	3" cal.
H	Ilex meserveae 'Blue Maid' Holly	1	3.5-4'
J	Juniperus 'Sea Green' Juniper	14	5 gal.
AZ	Azalea 'Tradition Pink'	16	3 gal.
RH	Rhododendron 'Roseum Elegans'	3	30-36"
ARB	Arborvitae 'Dark American'	12	5-6"

Landscape Plan for: 15-21 Lexington Street
Newton MA 02465

SCALE: 1"=10'	APPROVED BY:	DRAWN BY:
DATE:		REVISED:
The Garden Artisan CO: Antonio Mariano MCLP		
P5	DRAWING NUMBER	

D SIDE (NORTH)



D SIDE (NORTH)			
CODE	VARIETY	QNTY	SIZE
PS	Pinus Strobus 'fastigiata' Columnar Pine	6	12-14'
SH	Viburnum 'Shasta'	3	5-6'
RH	Rhododendron 'Roseum Elegans'	9	30-36"
RH2	Rhododendron 'Roseum Elegans'	21	3.5-4'
J	Juniperus 'Sea Green' Juniper	6	5 gal.
SP	Spirea 'Little Princess'	21	3 gal.
AZ	Azalea 'Tradition Pink'	132	3 gal.
RM	Acer Rubrum 'Autumn Spire' Red Maple	3	3" cal
BS	Picea pungens 'Colorado Blue Spruce'	3	3" cal
RT	Cornus Alba 'Ivory Halo'	6	5 gal.
OLH	Hydrangea Quercifolia 'Alice'	3	4-5'
HYP	Hydrangea Paniculata 'little lime'	1	5 gal.
M	Miscanthus 'Morning Light'	16	3 gal.

Landscape Plan for: **15-21 Lexington Street**
Newton MA 02465

SCALE: 1"=10'	APPROVED BY:	DRAWN BY:
DATE:		REVISED:
The Garden Artisan CO: Antonio Mariano MCLP		
P6	DRAWING NUMBER:	

