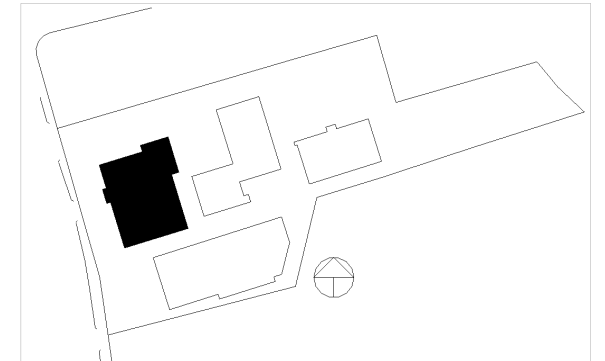


# LANGLEY TERRACE

392-404 LANGLEY ROAD, NEWTON, MASSACHUSETTS  
REQUEST FOR ZONE CHANGE AND SPECIAL PERMIT



	STUD.	1B1b	2B2b	TOTAL
GARAGE	-	-	-	-
LEVEL 1	2	3	2	7
LEVEL 2	2	3	2	7
LEVEL 3	2	3	1	6
TOTAL	6	9	5	20

	GFA
GARAGE	2899 SF
LEVEL 1	6696 SF
LEVEL 2	6696 SF
LEVEL 3	5608 SF
TOTAL	21899 SF

SITE LOCATION

*Schlesinger and Buchbinder, LLP*  
Attorneys at Law

VTP  
ASSOCIATES  
INC.



MICOZZI MANAGEMENT, INC.

G2 Collaborative  
LANDSCAPE ARCHITECTURE


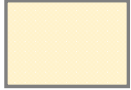

SEPTEMBER 7TH, 2017

**Perkins Eastman**





SITE AREAS

	55159 SFT
	7348 SFT
	17130 SFT

AERIAL PLAN

SEPTEMBER 7TH, 2017





LAND USE

- BU1
- MR1
- MR2

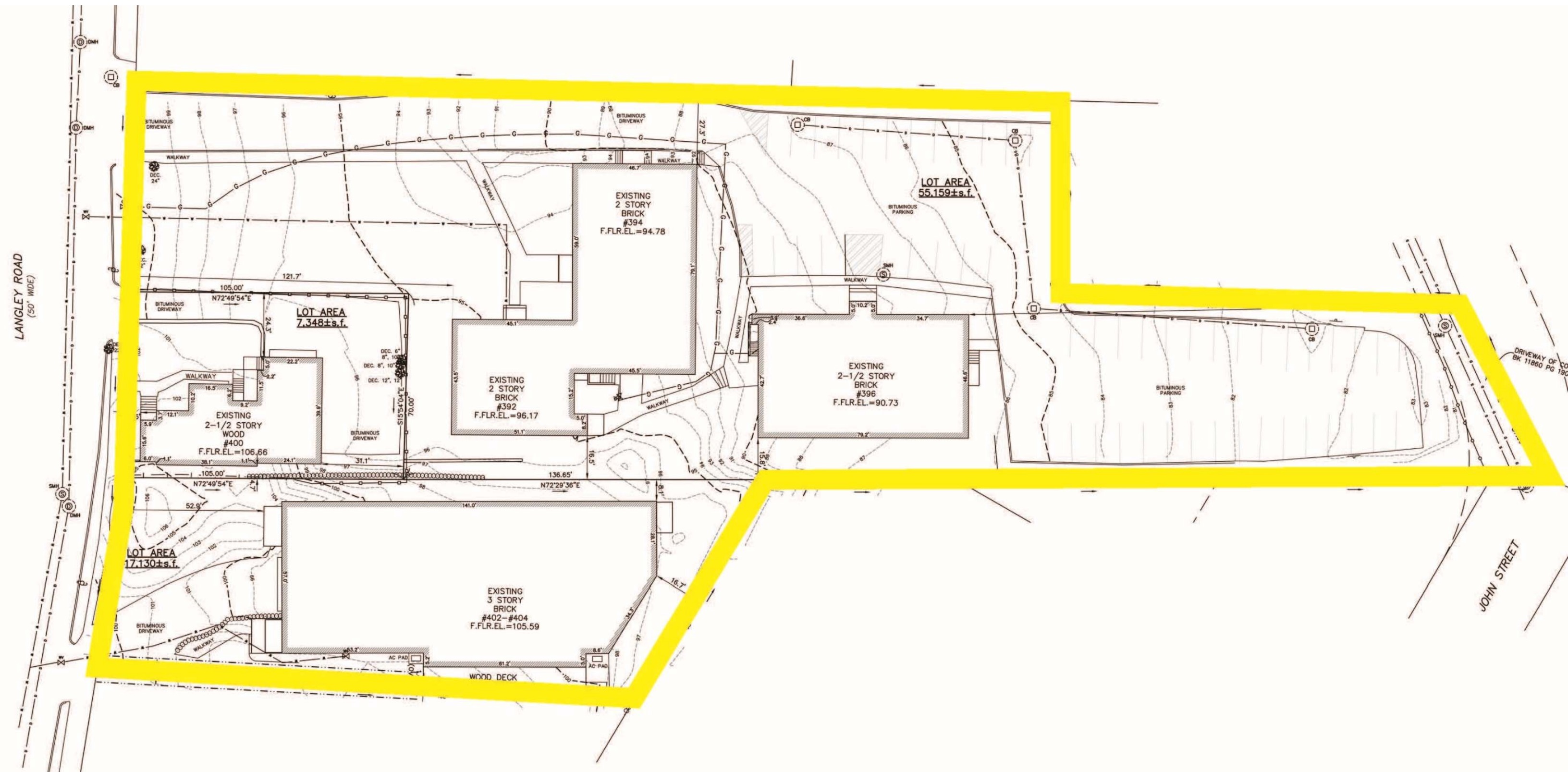
LAND USES





SITE PHOTOS

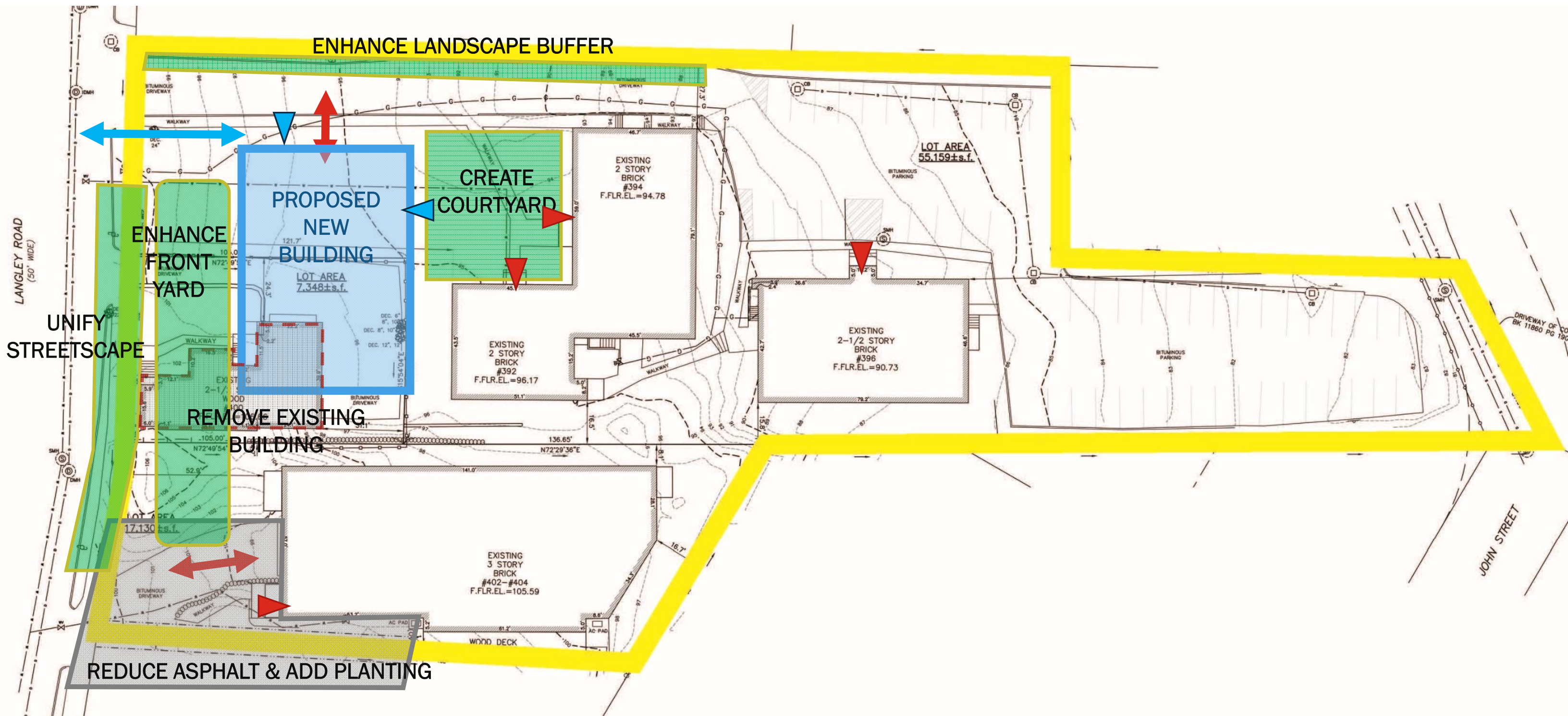




EXISTING SITE CONDITION

SEPTEMBER 7TH, 2017





DESIGN CONSIDERATIONS

SEPTEMBER 7TH, 2017





BIRD'S EYE VIEW FROM NORTHWEST

SEPTEMBER 7TH, 2017

*Schlesinger and Buchbinder, LLP*  
Attorneys at Law

VTP  
ASSOCIATES  
INC.



MICOZZI MANAGEMENT, INC.

G2 Collaborative  
LANDSCAPE ARCHITECTURE

Perkins Eastman





BIRD'S EYE VIEW FROM NORTHEAST

*Schlesinger and Buchbinder, LLP*  
Attorneys at Law

VTP  
ASSOCIATES  
INC.



MICOZZI MANAGEMENT, INC.

G2 Collaborative  
LANDSCAPE ARCHITECTURE

SEPTEMBER 7TH, 2017

Perkins Eastman





BIRD'S EYE VIEW FROM SOUTHWEST

SEPTEMBER 7TH, 2017

*Schlesinger and Buchbinder, LLP*  
Attorneys at Law

VTP  
ASSOCIATES  
INC.



MICOZZI MANAGEMENT, INC.

G2 Collaborative  
LANDSCAPE ARCHITECTURE

Perkins Eastman





STREET VIEW FROM LANGLEY ROAD

SEPTEMBER 7TH, 2017

*Schlesinger and Buchbinder, LLP*  
Attorneys at Law

VTP  
ASSOCIATES  
INC.

 MICOZZI MANAGEMENT, INC.

G2 Collaborative  
LANDSCAPE ARCHITECTURE

**Perkins Eastman**





STREET VIEW FROM LANGLEY ROAD

SEPTEMBER 7TH, 2017

*Schlesinger and Buchbinder, LLP*  
Attorneys at Law

VTP  
ASSOCIATES  
INC.



MICOZZI MANAGEMENT, INC.

G2 Collaborative  
LANDSCAPE ARCHITECTURE

**Perkins Eastman**





ENTRY VIEW FROM LANGLEY ROAD

*Schlesinger and Buchbinder, LLP*  
Attorneys at Law

VTP  
ASSOCIATES  
INC.

 MICOZZI MANAGEMENT, INC.

G2 Collaborative  
LANDSCAPE ARCHITECTURE

SEPTEMBER 7TH, 2017

**Perkins Eastman**





VIEW FROM DRIVEWAY LOOKING SOUTHWEST

SEPTEMBER 7TH, 2017

*Schlesinger and Buchbinder, LLP*  
Attorneys at Law

VTP  
ASSOCIATES  
INC.

 MICOZZI MANAGEMENT, INC.

G2 Collaborative  
LANDSCAPE ARCHITECTURE

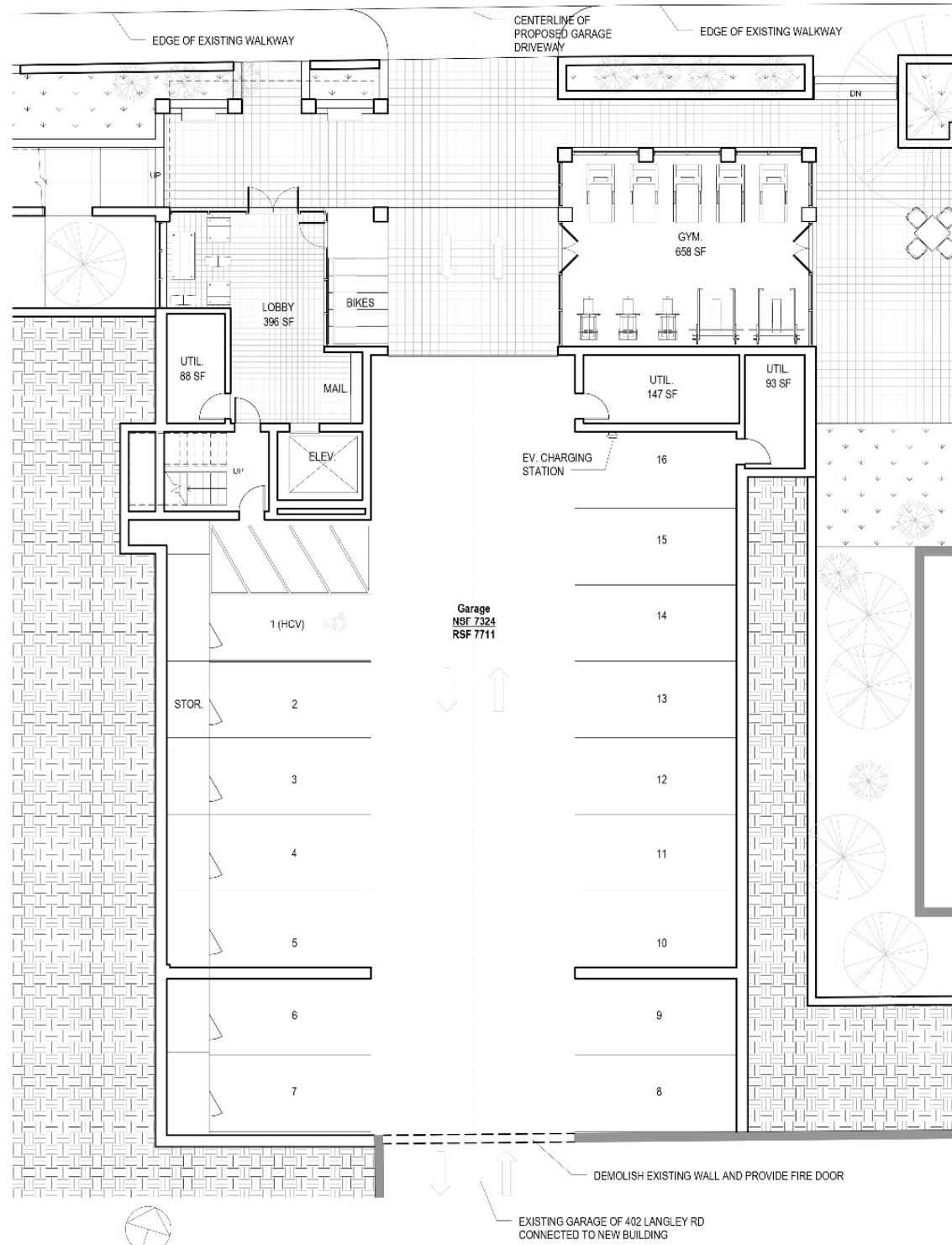
**Perkins Eastman**





ENTRY VIEW AT GARAGE LEVEL



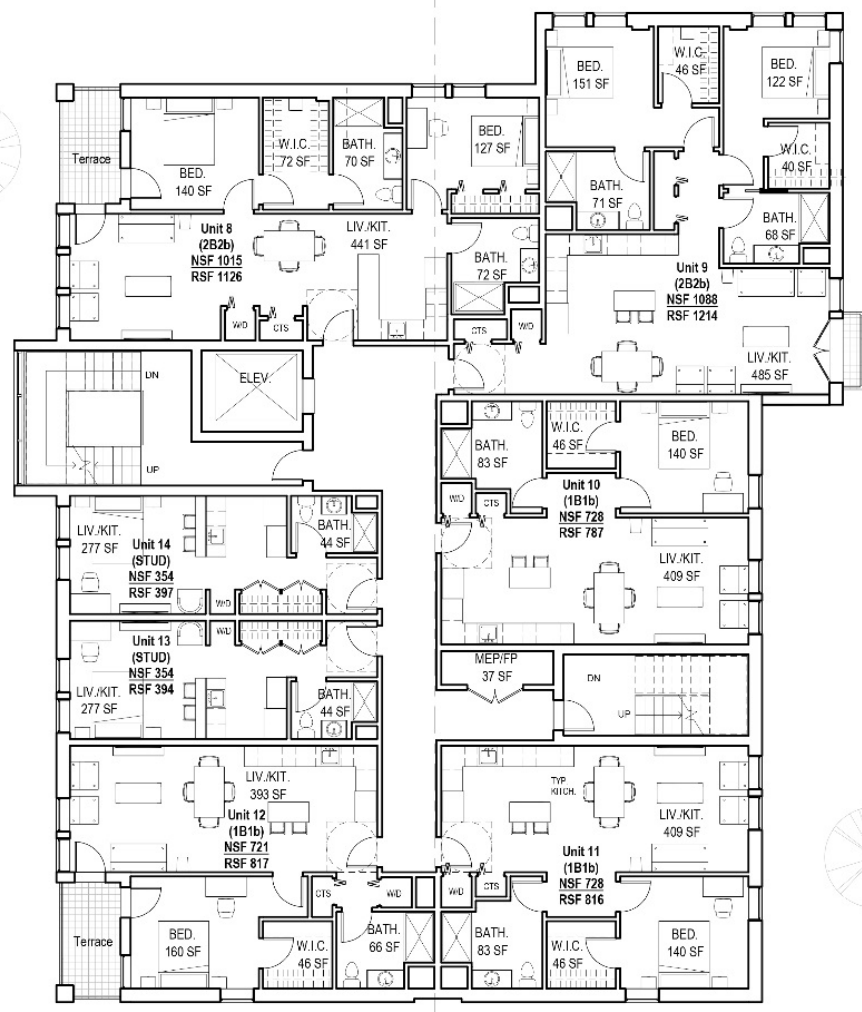


GARAGE PLAN  
FLOOR PLANS

FIRST LEVEL PLAN

SEPTEMBER 7TH, 2017

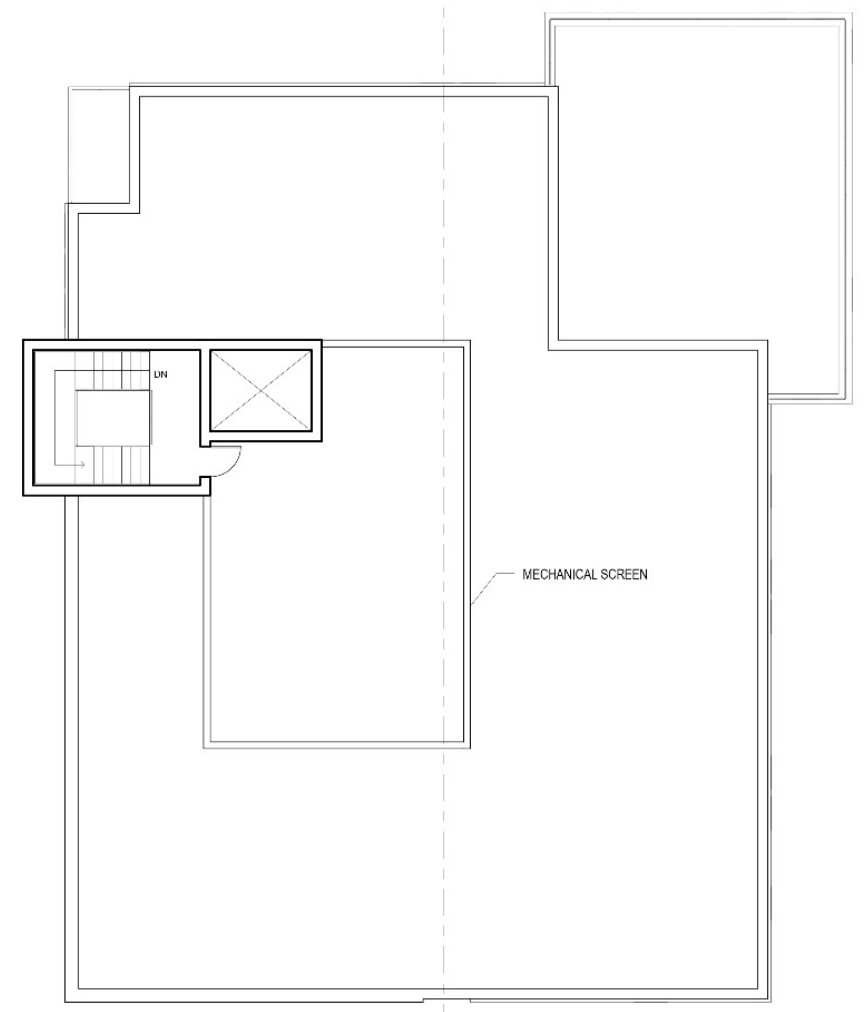




SECOND LEVEL PLAN



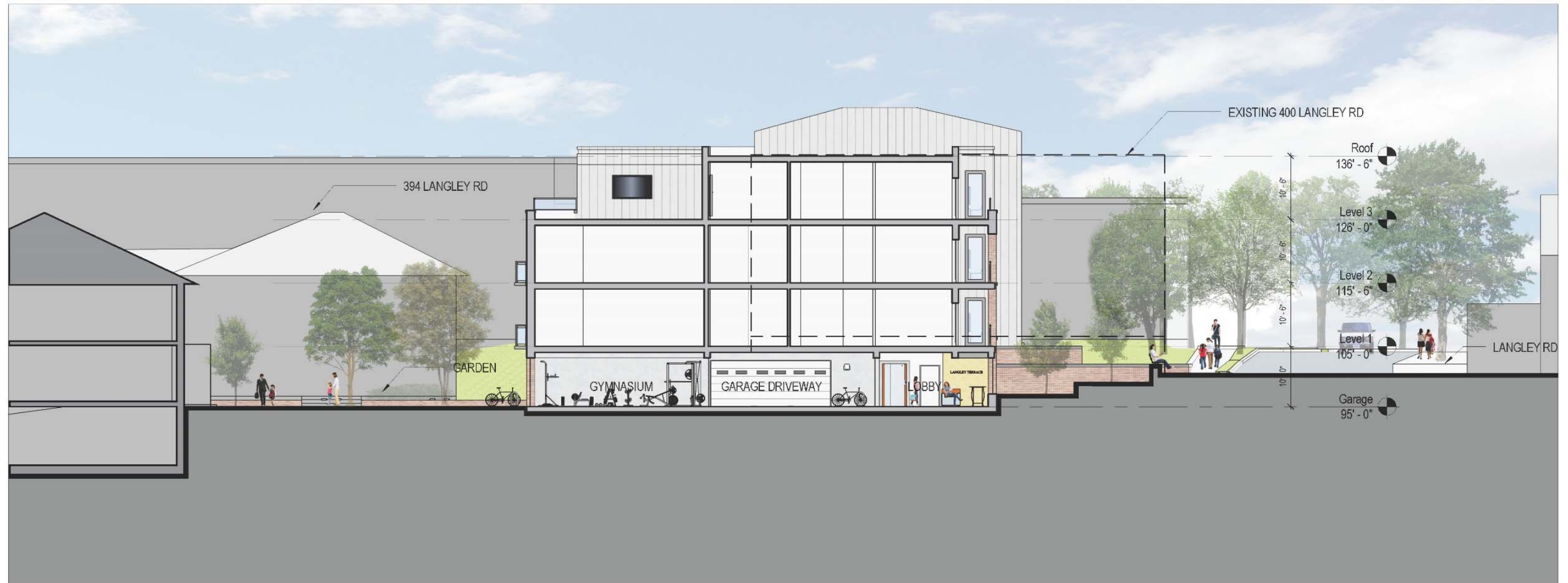
THIRD LEVEL PLAN



ROOF PLAN

SEPTEMBER 7TH, 2017





SECTION EAST-WEST





NORTH ELEVATION

SEPTEMBER 7TH, 2017

*Schlesinger and Buchbinder, LLP*  
Attorneys at Law

VTP  
ASSOCIATES  
INC.

 MICOZZI MANAGEMENT, INC.

G2 Collaborative  
LANDSCAPE ARCHITECTURE

**Perkins Eastman**





EAST ELEVATION

SEPTEMBER 7TH, 2017

*Schlesinger and Buchbinder, LLP*  
Attorneys at Law

VTP  
ASSOCIATES  
INC.

 MICOZZI MANAGEMENT, INC.

G2 Collaborative  
LANDSCAPE ARCHITECTURE

**Perkins Eastman**





SOUTH ELEVATION

*Schlesinger and Buchbinder, LLP*  
Attorneys at Law

VTP  
ASSOCIATES  
INC.

 MICOZZI MANAGEMENT, INC.

G2 Collaborative  
LANDSCAPE ARCHITECTURE

SEPTEMBER 7TH, 2017

**Perkins Eastman**





WEST ELEVATION

SEPTEMBER 7TH, 2017

*Schlesinger and Buchbinder, LLP*  
Attorneys at Law

VTP  
ASSOCIATES  
INC.



MICOZZI MANAGEMENT, INC.

G2 Collaborative  
LANDSCAPE ARCHITECTURE

Perkins Eastman