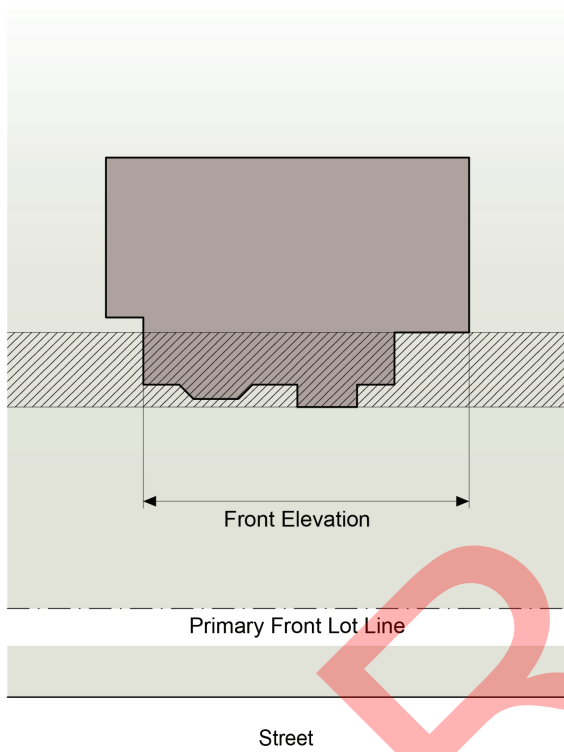
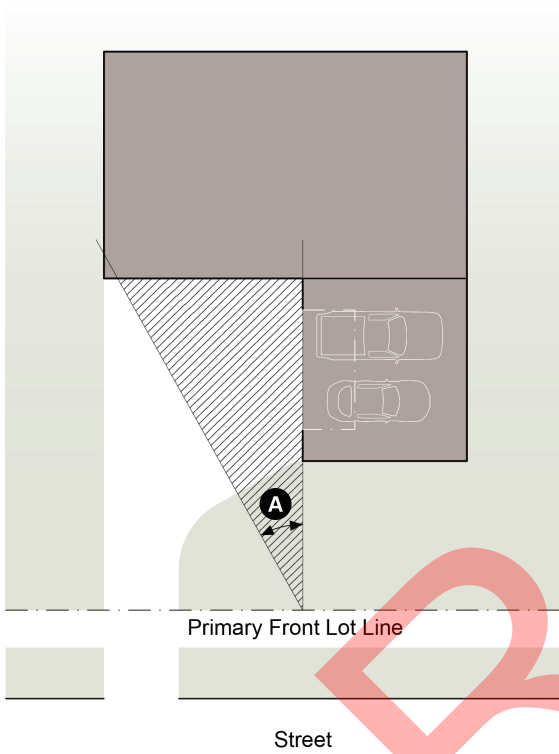


Front Elevation. The exterior wall of a principal building oriented in whole or in part toward the Primary Front Lot Line. The Front Elevation does not include any exterior wall of a building more than 10 feet behind the frontmost exterior wall oriented in whole or in part toward the Primary Front Lot Line.



Front Elevation	min	max
A Depth from frontmost exterior wall		10 ft

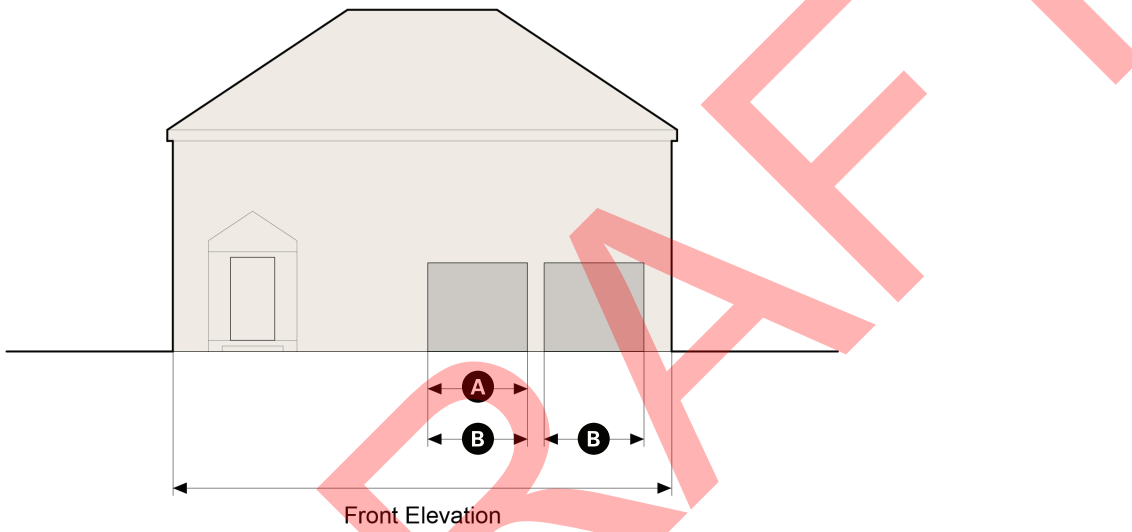
Side-Facing Garage. A Garage with a primary door or doors through which automobiles enter the Garage facing the Primary Front Lot Line at an angle between 60 and 90 degrees.



Side-Facing Garage Door Location	min	max
A Angle allowed within (angle from Primary Front Lot Line)	60 degrees	90 degrees

Standards for Front-Facing Garages.

1. The sum of the width of all Garage Doors on a Front Facing Garage may be up to the following:
 - a. A Front Facing Garage that includes only Single Garage Doors may be up to 45% of the total width of the Front Elevation.
 - b. A Front Facing Garage that includes a Double Garage Door may be up to 40% of the total width of the Front Elevation.

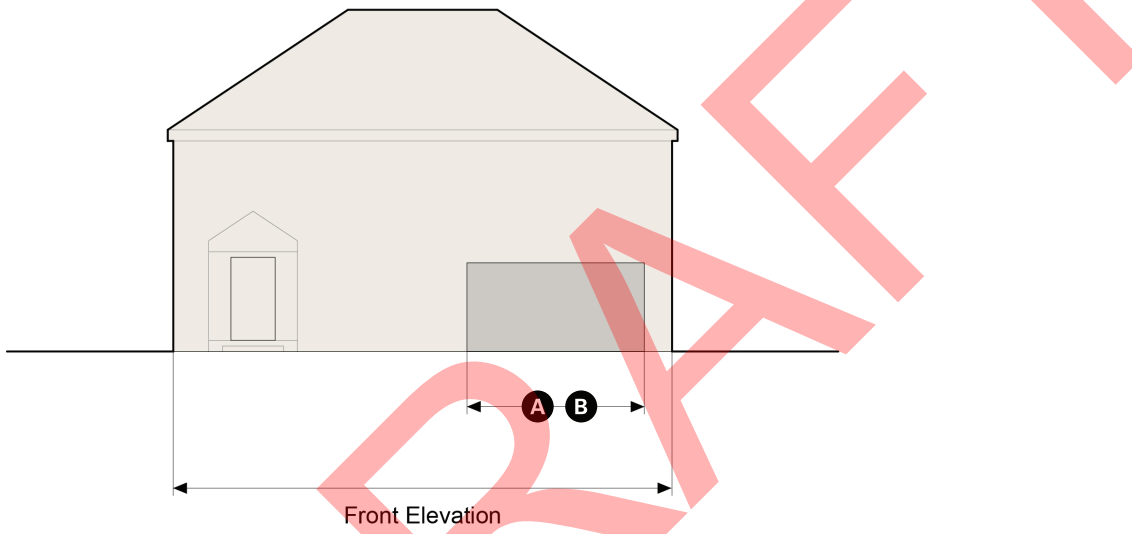


Front-Facing Garage - Single Garage Doors	min	max
A Width of an Individual Single Garage Door		9 ft
B Sum of Width of Single Garage Door(s)		45% of Front Elevation

Standards for Front-Facing Garages.

1. The sum of the width of all Garage Doors on a Front Facing Garage may be up to the following:

- a. A Front Facing Garage that includes only Single Garage Doors may be up to 45% of the total width of the Front Elevation.
- b. A Front Facing Garage that includes a Double Garage Door may be up to 40% of the total width of the Front Elevation.



Front-Facing Garage - Double Garage Door	min	max
A Width of an Individual Double Garage Door		16 ft
B Sum of Width of Double Garage Door		40% of Front Elevation