

Preliminary COVID-19 Data

City of Newton, MA



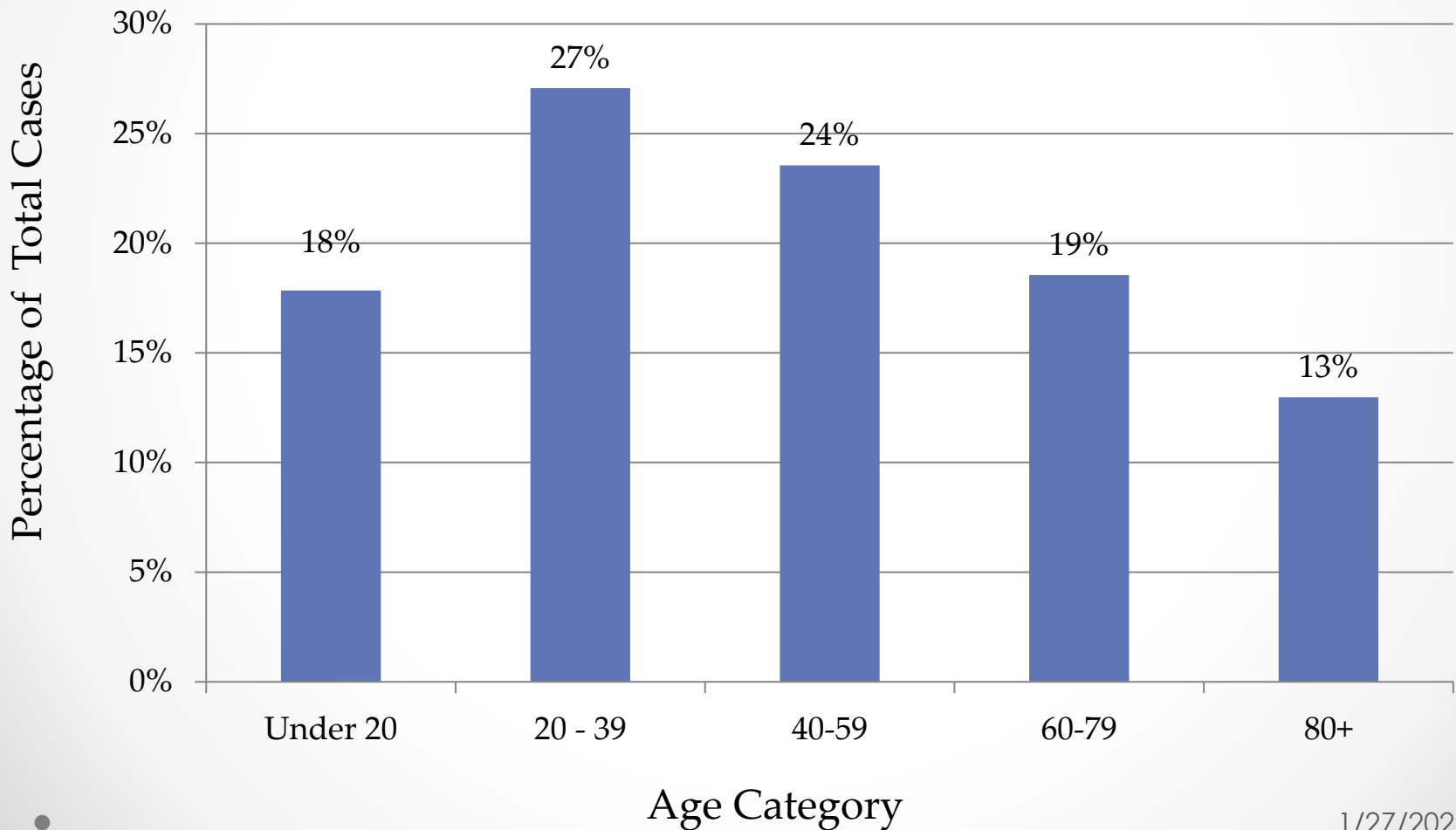
Public Health
Prevent. Promote. Protect.

**City of Newton
Health and Human Services Department**

Data Notes

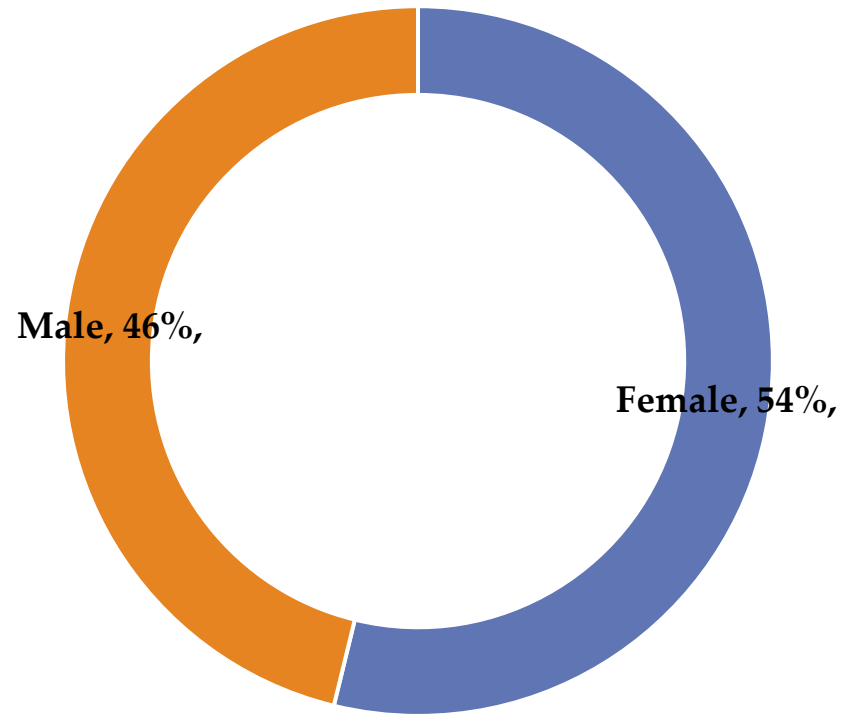
- All data is current through the date indicated at the bottom of each slide.
- Data is preliminary and is updated as additional information about cases is acquired.
- Massachusetts data is sourced from the COVID-19 Data Dashboard posted by the Massachusetts Department of Public Health [here](#).
- These reports are provided periodically and include information not already reported on the city's COVID-19 data [website](#).
- The cases by month graph is by test date.

Cases* by Age Category



*Cumulative confirmed COVID-19 cases among Newton residents

Cases by Sex*



■ Female ■ Male

*When sex is unknown, it is omitted.

Cases in LTC/AL* facilities

Percentage through 1/27

13%

Percentage through 12/16

20%

- *Includes people who have tested positive for COVID-19 and live in Newton long-term care and assisted living facilities. Percentage is of total confirmed Newton cases.

Cases Post-Isolation*

- Percentage through 1/27
- Percentage through 12/16

53%

56%

Cumulative reported* deaths among Newton residents who tested positive for COVID-19

Week Ending	Cumulative Deaths	Week Ending	Cumulative Deaths
July 1, 2020	118	October 28, 2020	140
July 8, 2020	119	November 4, 2020	142
July 15, 2020	119	November 11, 2020	145
July 22, 2020	122	November 18, 2020	148
July 29, 2020	125	November 25, 2020	151
August 5, 2020	125	December 2, 2020	154
August 12, 2020	127	December 9, 2020	157
August 19, 2020	128	December 16, 2020	160
August 26, 2020	131	December 23, 2020	162
September 2, 2020	132	December 30, 2020	170
September 9, 2020	133	January 6, 2021	173
September 16, 2020	133	January 13, 2021	177
September 23, 2020	136	January 20, 2021	180
September 30, 2020	136	January 27, 2021	182
October 7, 2020	137		
October 14, 2020	138		
October 21, 2020	139		

*Deaths are listed by week when reported and may have occurred earlier.

Deaths are among confirmed COVID-19 cases

1/27/2021 ●

Please see archived expanded data reports for cumulative deaths for earlier months.

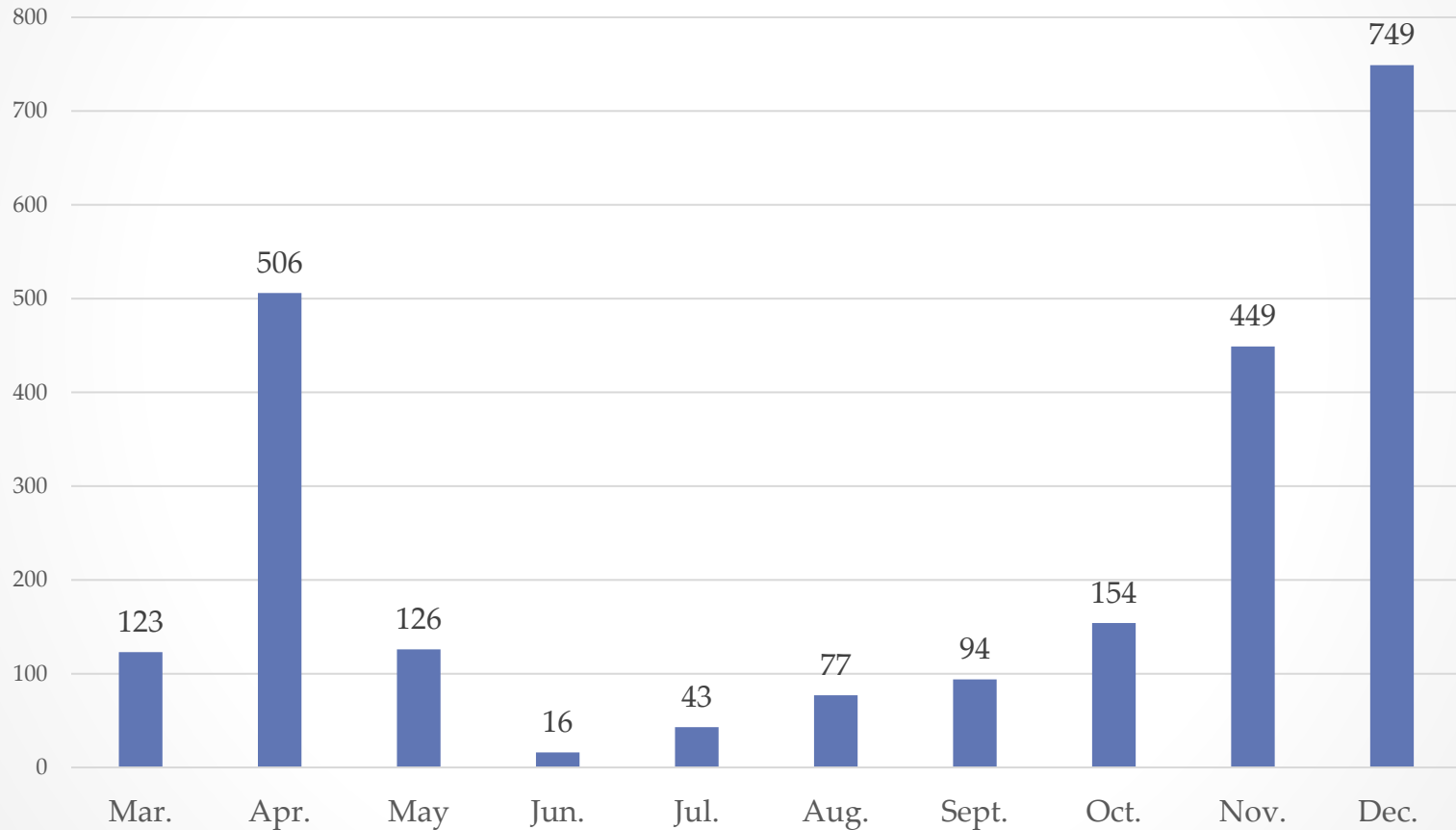
Deaths by Age 80+*

- Percentage through 1/27
- Percentage through 12/16

75%

74%

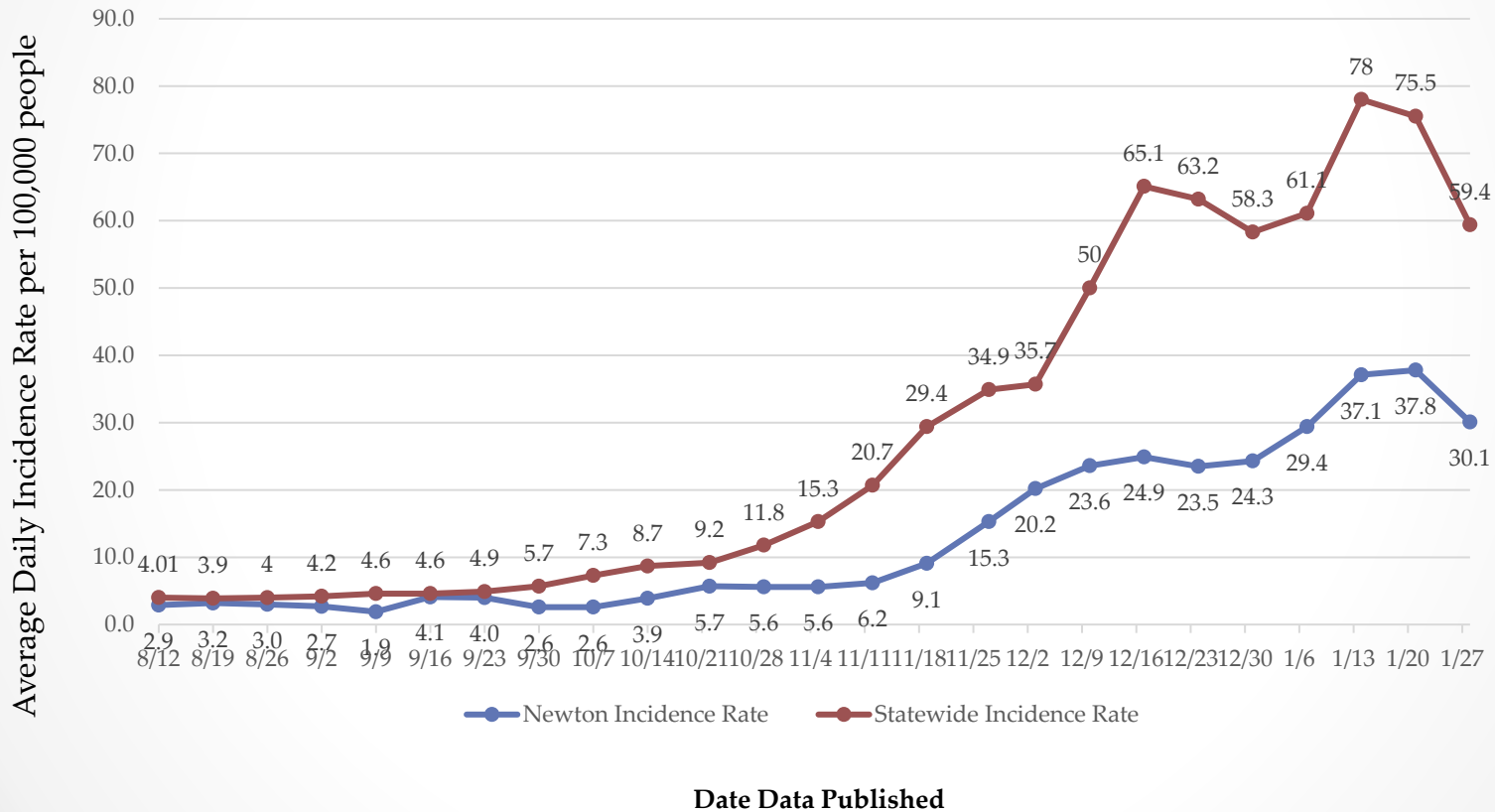
Confirmed Cases by Month*



*Cases by test date. Counts by month may change as new information is obtained about city/town or residents or cases are de-duplicated. Does not include months where case count is less than 5 or months not yet complete.

Incidence Rate*

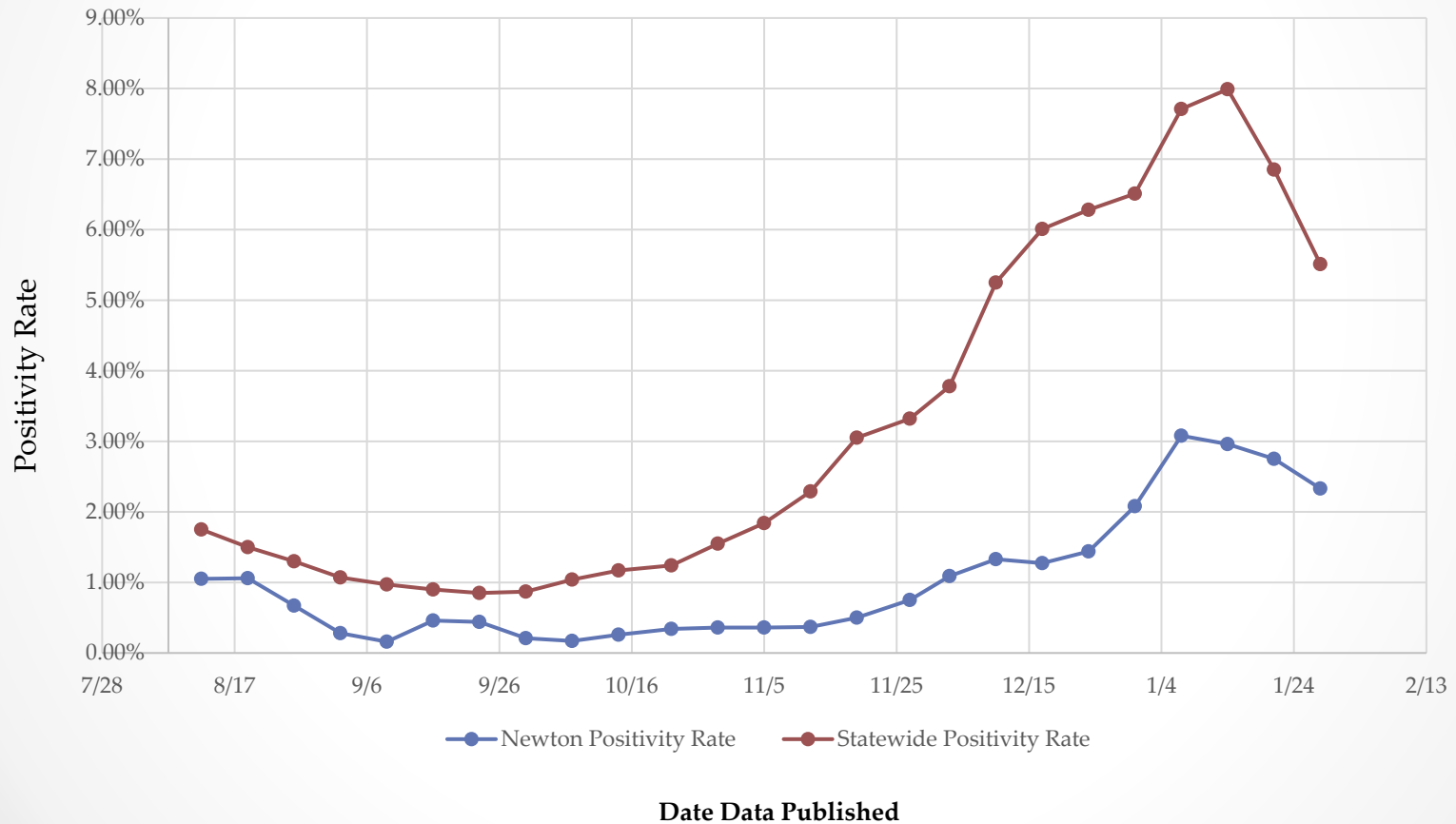
Average Daily Incidence Rate per 100,000 people



*Dates are when data was published in the MDPH Weekly Public Health Report at

Positivity Rates*

Positivity Rate



*Dates are when data was published in the MDPH Weekly Public Health Report at

<https://www.mass.gov/info-details/covid-19-response-reporting# covid-19-weekly-public-health-report>

1/27/2021