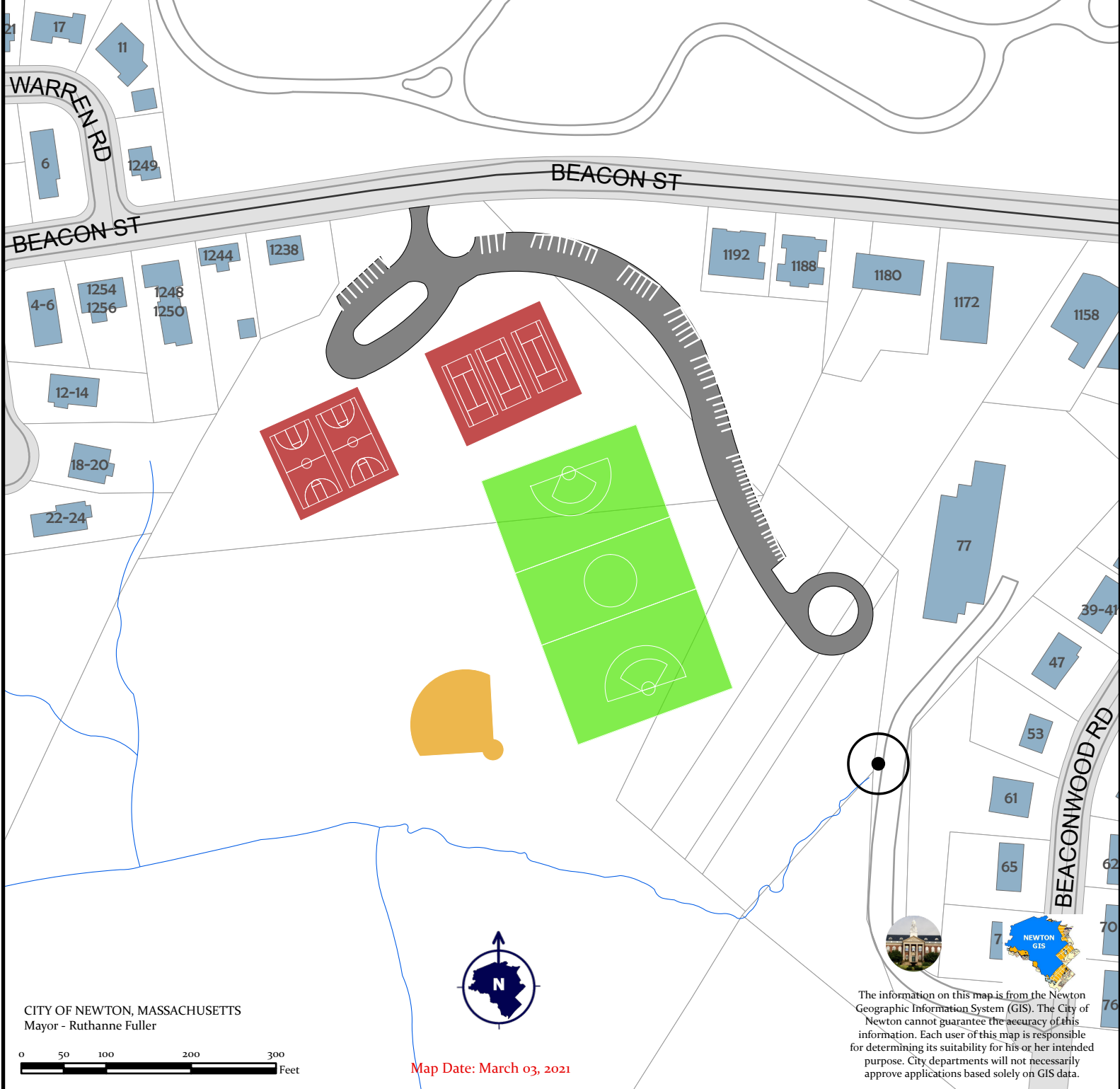


# Cold Spring Brook Forebay Project

City of Newton, Massachusetts



CITY OF NEWTON, MASSACHUSETTS  
Mayor - Ruthanne Fuller

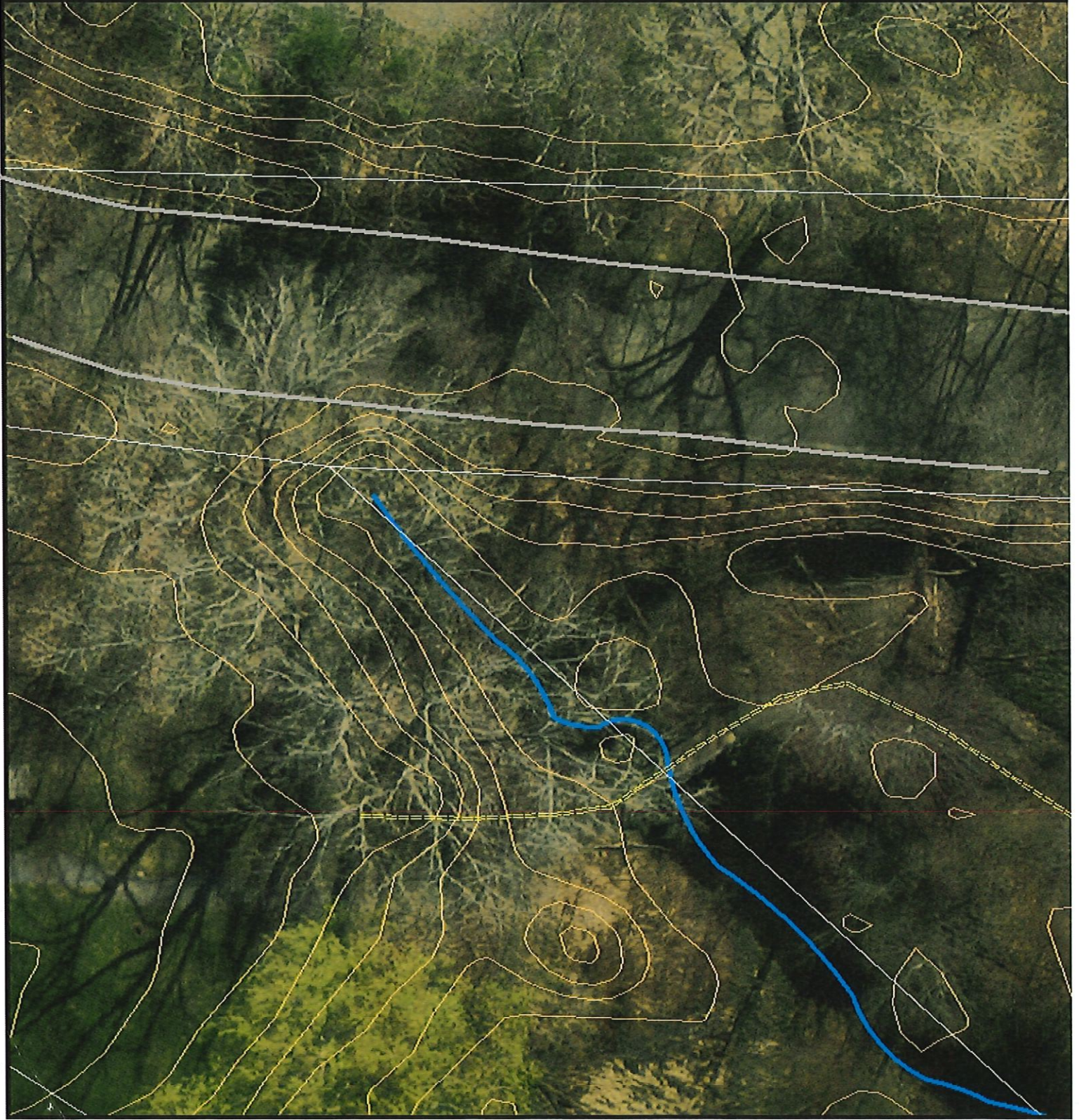


Map Date: March 03, 2021



The information on this map is from the Newton Geographic Information System (GIS). The City of Newton cannot guarantee the accuracy of this information. Each user of this map is responsible for determining its suitability for his or her intended purpose. City departments will not necessarily approve applications based solely on GIS data.

**Cold Spring Brook  
Proposed  
Sediment Forebay**  
*Overview - Zoomed in*  
**Newton, Mass.**  
Map Date: 02-24-2021



The information on this map is from the Newton Geographic Information System (GIS). The City of Newton can not guarantee the accuracy of this information. Each user of this map is responsible for determining its suitability for his or her intended purpose. City departments will not necessarily approve applications based solely on GIS data.

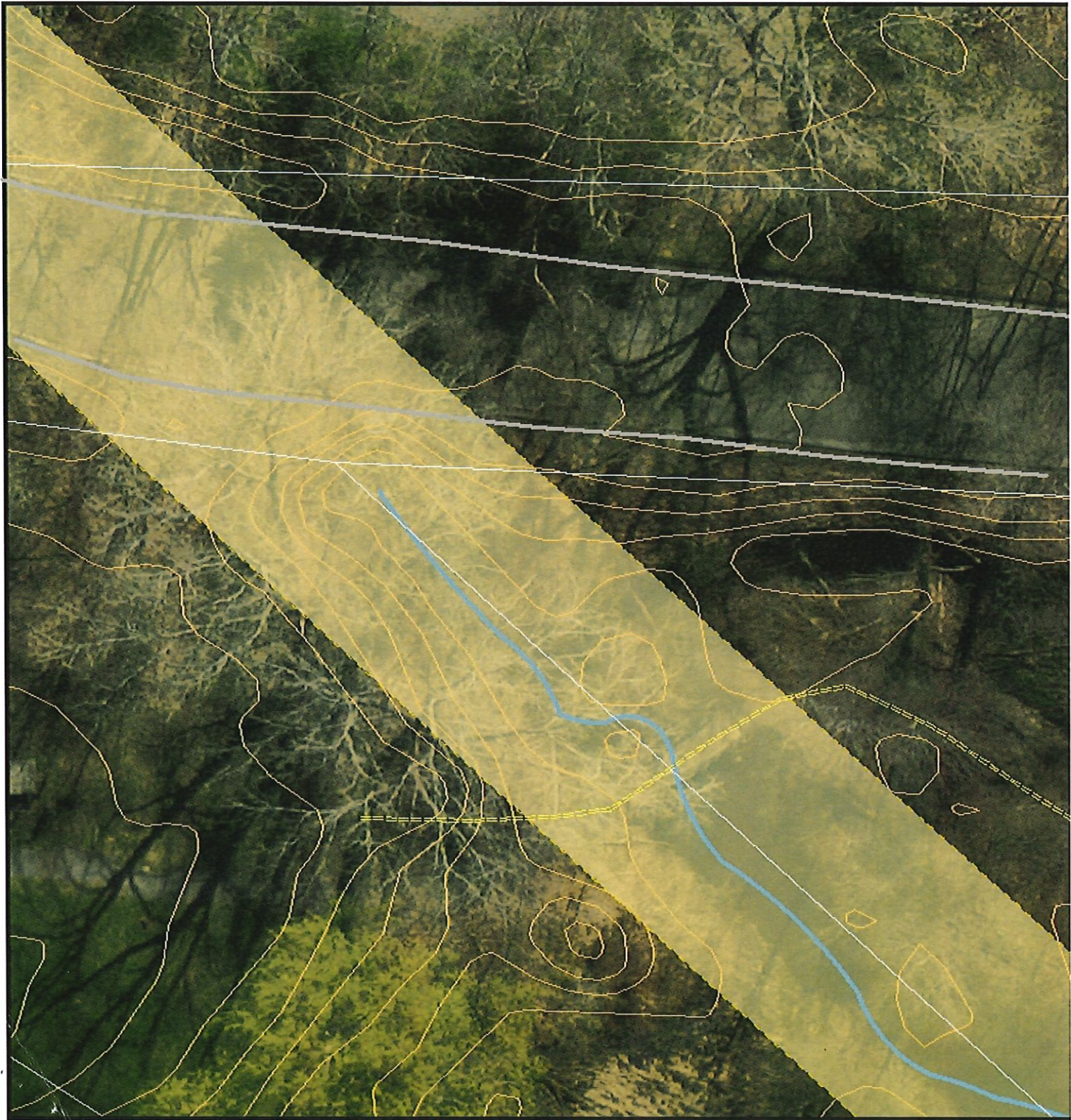


**CITY OF NEWTON, MASSACHUSETTS**  
Mayor - Richard Fuller  
GIS Administrator - Douglas Greenwood

# Cold Spring Brook Proposed Sediment Forebay *easement*

**Newton, Mass.**

Map Date: 02-24-2021

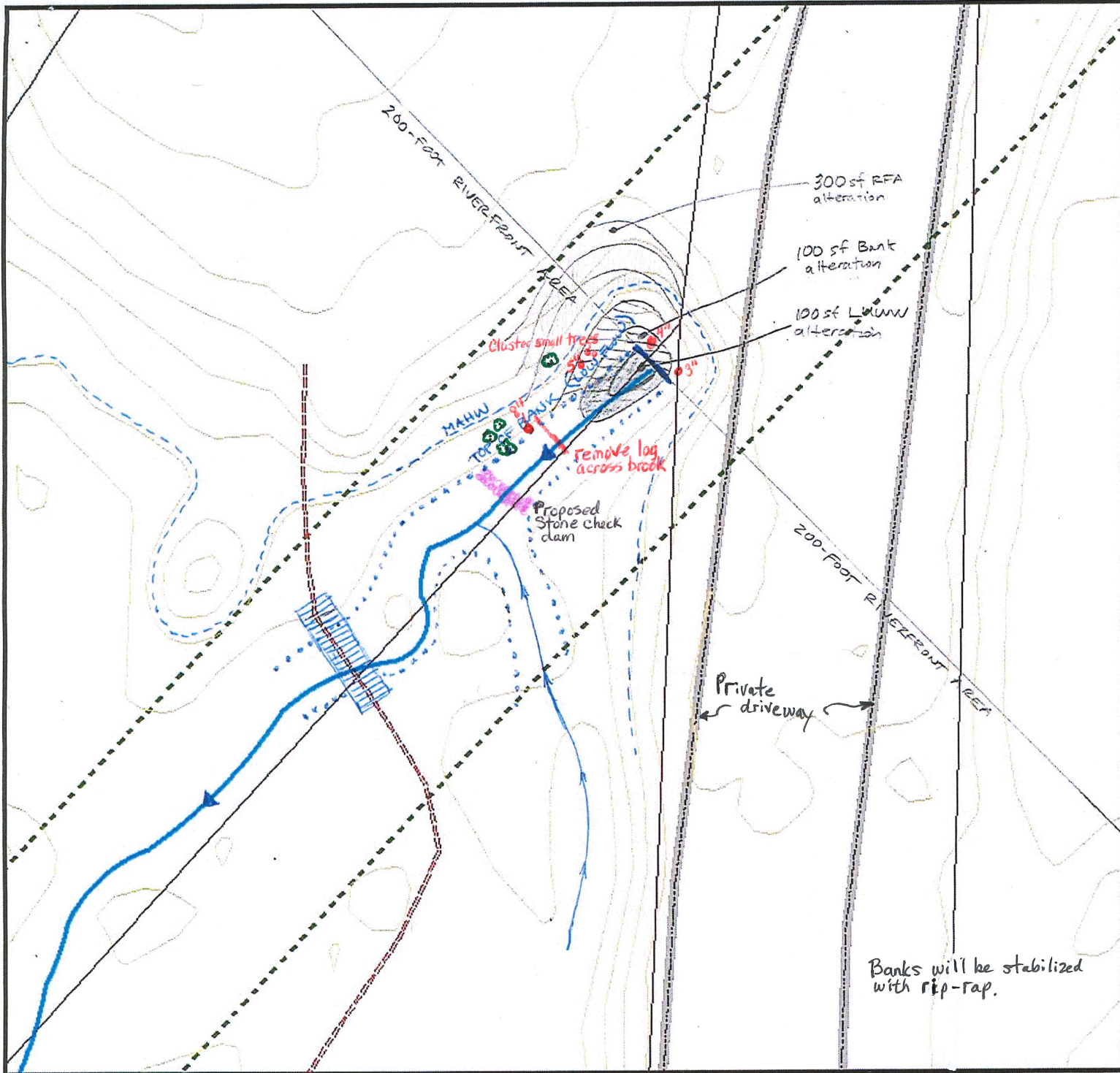
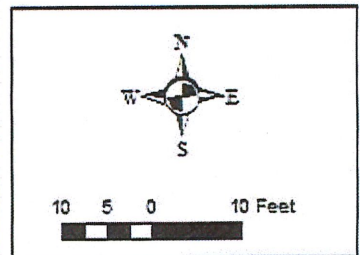


The information on this map is from the Newton Geographic Information System (GIS). The City of Newton can be held liable for accuracy of the information. Each user of this map is responsible for determining its suitability for the intended purpose. City departments will not necessarily approve applications based solely on GIS data.



**CITY OF NEWTON, MASSACHUSETTS**  
Mayor - Ruben F. Filler  
GIS Administrator - Douglas Greenwood

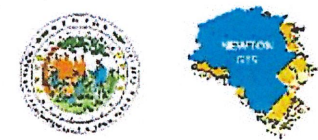
**Cold Spring Brook  
Proposed  
Sediment Forebay  
Newton, Mass.**  
Map Date: 02-24-2021



**Legend**

- Property Boundaries
- Easement Outlines
- Streams**
- TYPE**
- Intermittent
- Perennial
- Streets-Pavement Edge
- Trail
- Check dam
- Tree to be cut\*
- Tree to protect
- Top of Bank
- Footbridge

The information on this map is from the Newton Geographic Information System (GIS). The City of Newton cannot guarantee the accuracy of this information. Each user of this map is responsible for determining its suitability for his or her intended purpose. City departments will not necessarily approve applications based solely on GIS data.



CITY OF NEWTON, MASSACHUSETTS  
Mayor - Roderic Fuller  
GIS Administrator - Douglas Greenfield

\* Note: only 1 tree is 8" dbh or greater

Search by Address ie: 2 Fox Pl



Layers

118 ft

trail

Cold Spring Brook

Cold Spring Park

Project Location

BEACONWOOD