

MASSACHUSETTS DEPARTMENT OF TRANSPORTATION  
HIGHWAY DIVISION

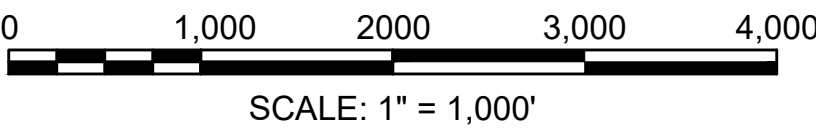
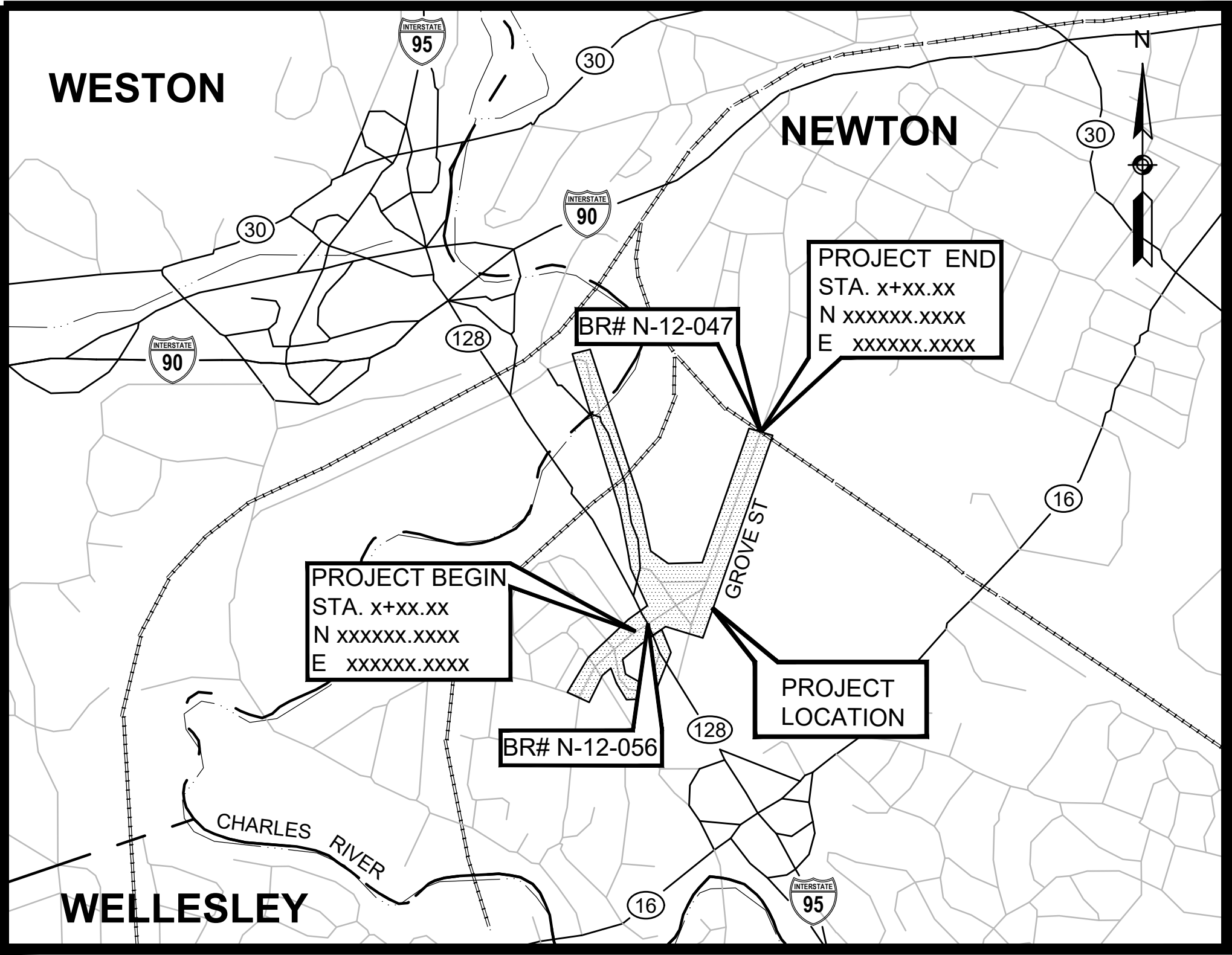
PLAN OF  
RT 128/ I-95 & GROVE STREET  
(BRIDGE NO. N-12-056)

IN THE CITY OF  
NEWTON  
MIDDLESEX COUNTY

FEDERAL AID PROJECT NO. XXXX

CONCEPTUAL DESIGN

INDEX	
SHEET NO.	DESCRIPTION
1	TITLE SHEET & INDEX
2 - 7	CONCEPT PLANS



LENGTH OF PROJECT = XXX.XX FEET = X.XXX MILES

NEWTON

RT 128/ I-95 & GROVE STREET

STATE	FED. AID PROJ. NO.	SHEET NO.	TOTAL SHEETS
MA	XXXX	1	7
PROJECT FILE NO.		607940	

RIVERSIDE MIXED USE DEVELOPMENT

TITLE & INDEX

THESE PLANS ARE SUPPLEMENTED BY THE OCTOBER 2017 CONSTRUCTION STANDARD DETAILS, THE 2015 OVERHEAD SIGNAL STRUCTURE AND FOUNDATION STANDARD DRAWINGS, MASSDOT TRAFFIC MANAGEMENT PLANS AND DETAIL DRAWINGS, THE 1990 STANDARD DRAWINGS FOR SIGNS AND SUPPORTS, THE 1968 STANDARD DRAWINGS FOR TRAFFIC SIGNALS AND HIGHWAY LIGHTING, AND THE LATEST EDITION OF THE AMERICAN STANDARD FOR NURSERY STOCK.

DESIGN DESIGNATION (RT 128/ I-95 & GROVE STREET)

DESIGN SPEED	XX MPH
ADT (YYYY)	X,XXX
ADT (YYYY)	X,XXX
K	X%
D	XX%
T (PEAK HOUR)	X.X%
T (AVERAGE DAY)	X.X%
DHV	XXX
DDHV	XXX
FUNCTIONAL CLASSIFICATION	XXXXXXXXXXXX

DATE	DESCRIPTION	REV #



RECOMMENDED FOR APPROVAL

VANASSE HANGEN BRUSTLIN, INC.      DATE

DEPARTMENT OF TRANSPORTATION  
FEDERAL HIGHWAY ADMINISTRATION  
APPROVED:

DIVISION ADMINISTRATOR      DATE

CHIEF ENGINEER

DATE

APPROVED

HIGHWAY ADMINISTRATOR

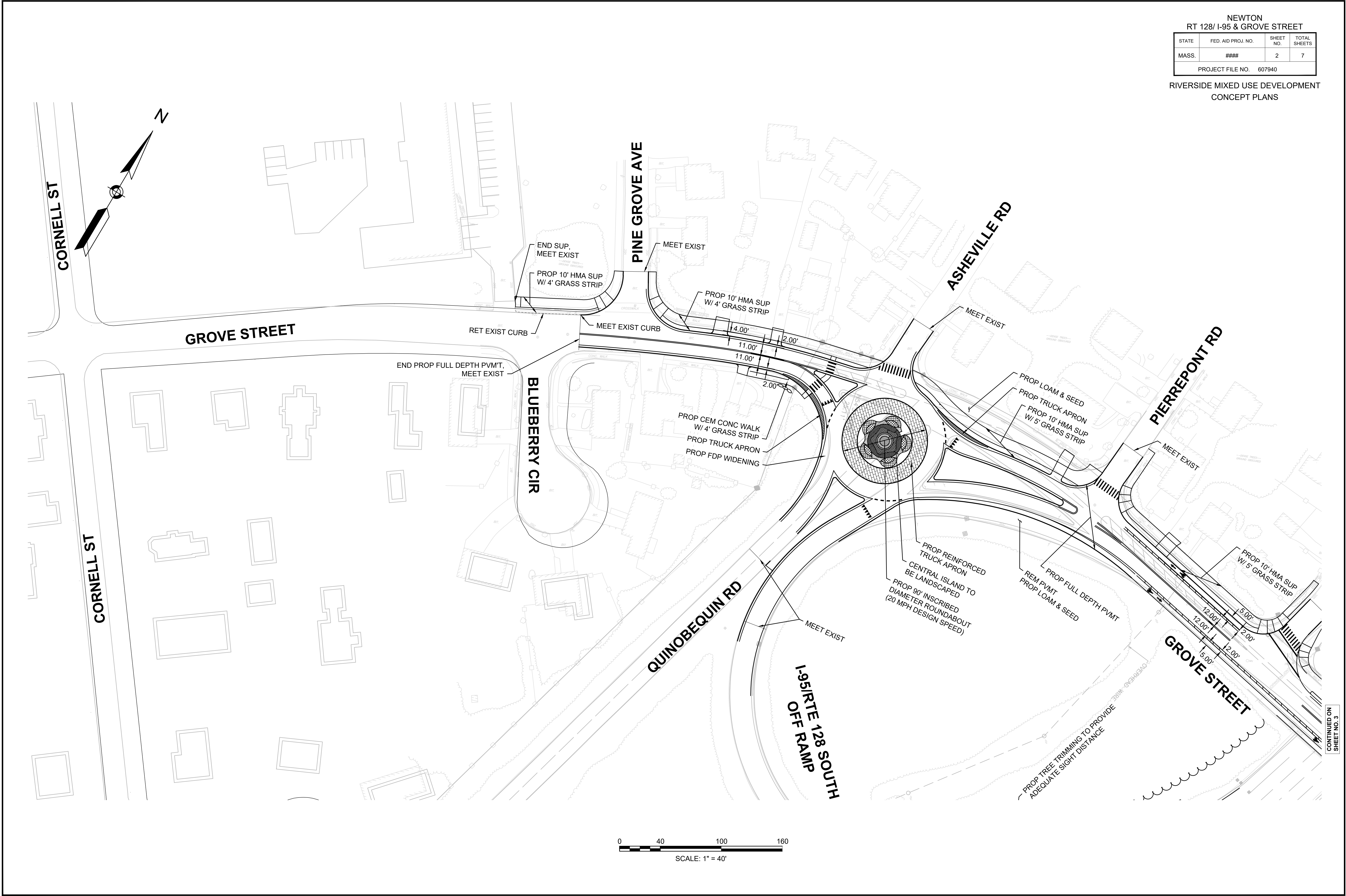
DATE

NEWTON  
RT 128/ I-95 & GROVE STREET

STATE	FED. AID PROJ. NO.	SHEET NO.	TOTAL SHEETS
MASS.	####	2	7

PROJECT FILE NO. 607940

RIVERSIDE MIXED USE DEVELOPMENT  
CONCEPT PLANS

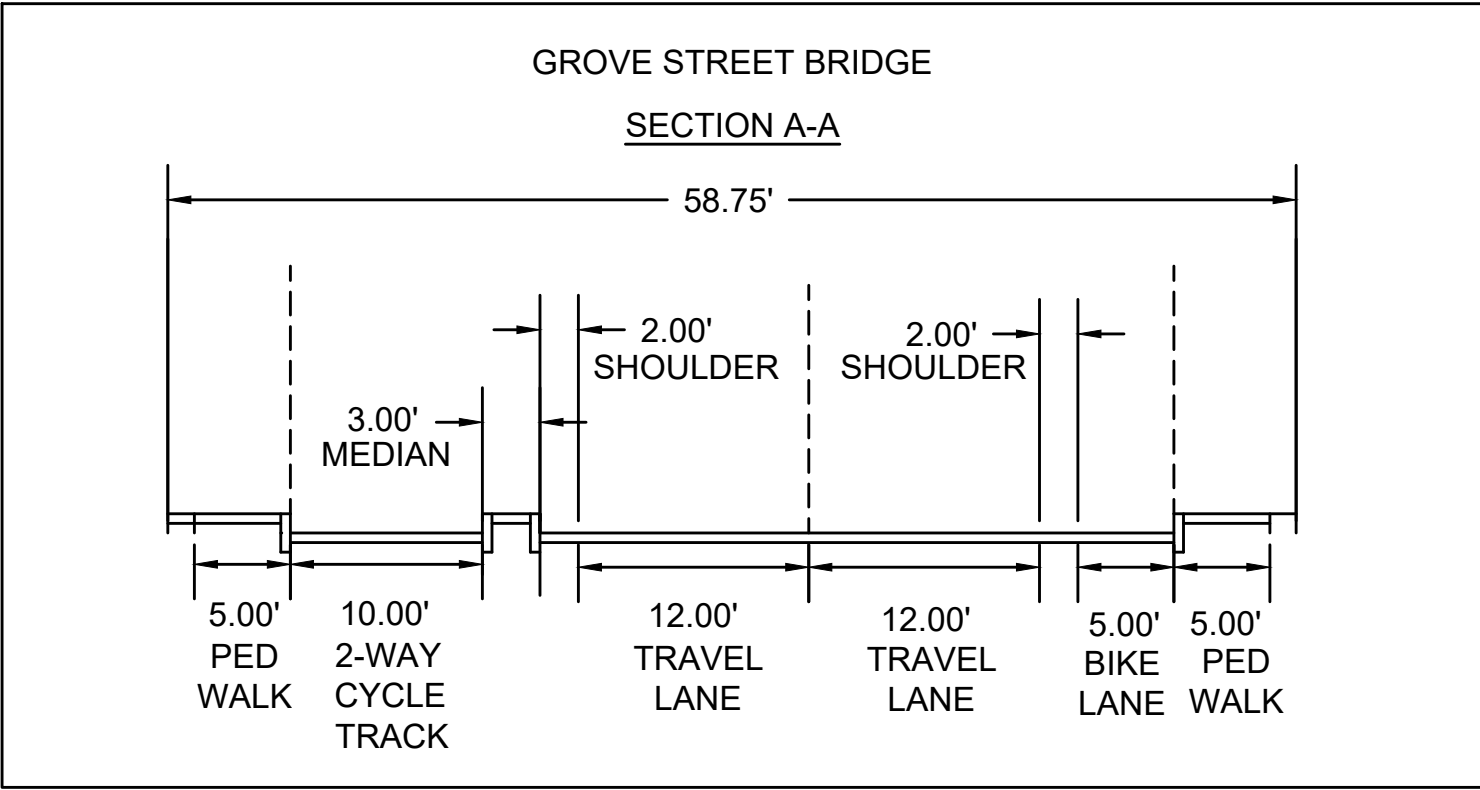
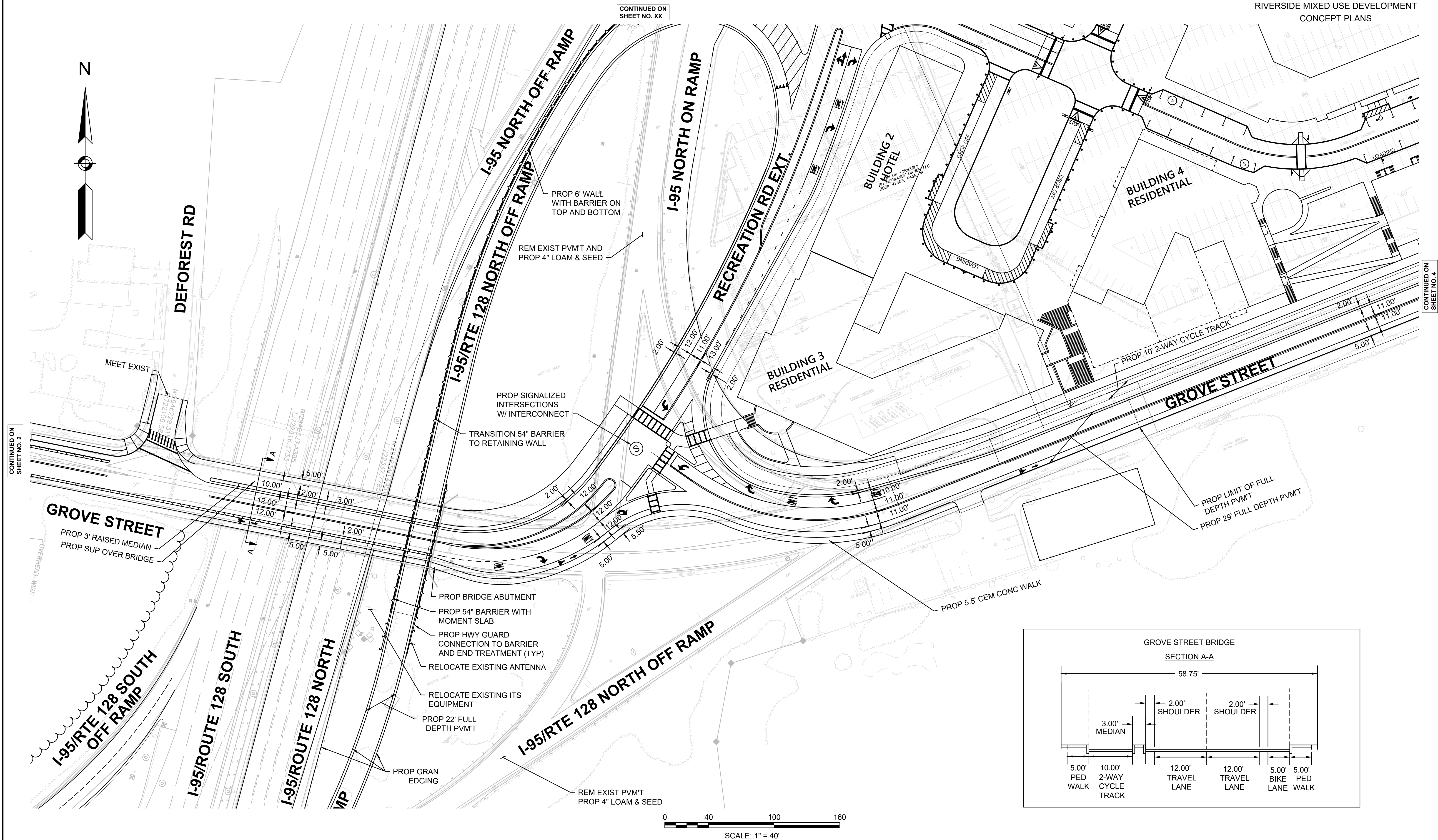


CONTINUED ON  
SHEET NO. 3



NEWTON RT 128/ I-95 & GROVE STREET			
STATE	FED. AID PROJ. NO.	SHEET NO.	TOTAL SHEETS
MASS.	####	3	7
PROJECT FILE NO. 607940			

RIVERSIDE MIXED USE DEVELOPMENT  
CONCEPT PLANS

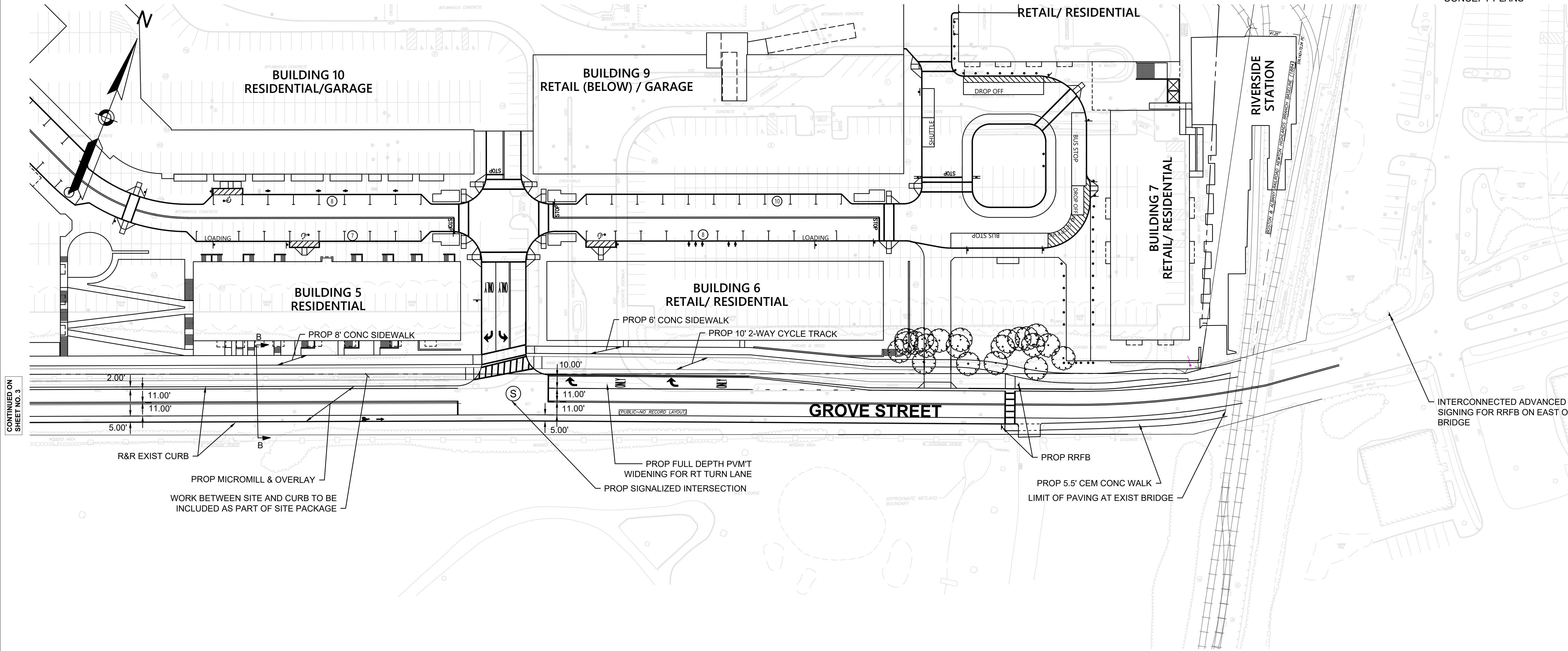




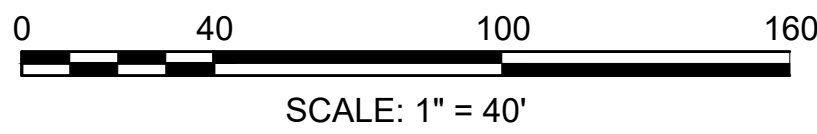
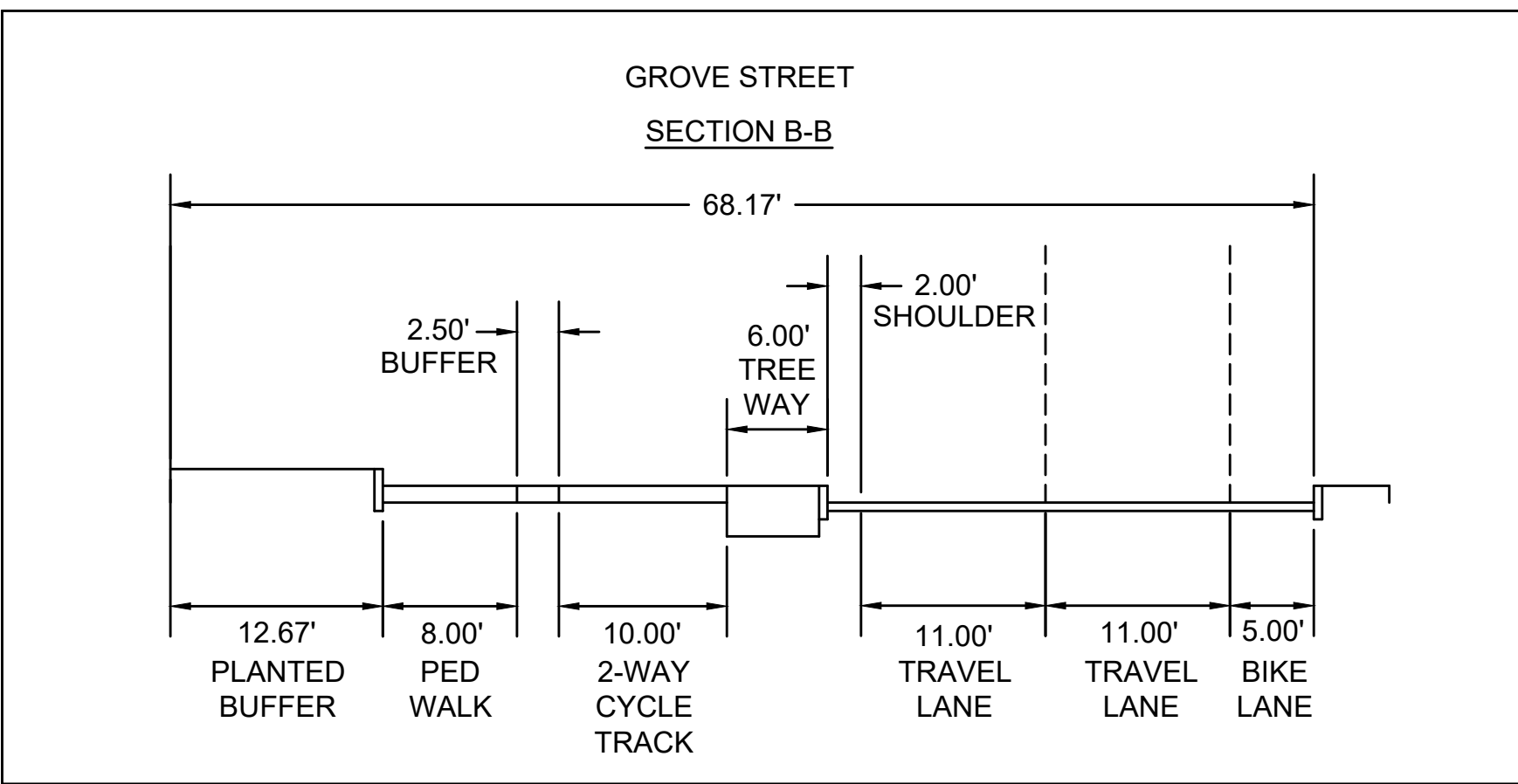
NEWTON  
RT 128/ I-95 & GROVE STREET

STATE	FED. AID PROJ. NO.	SHEET NO.	TOTAL SHEETS
MASS.	####	4	7
PROJECT FILE NO. 607940			

RIVERSIDE MIXED USE DEVELOPMENT  
CONCEPT PLANS



CONTINUED ON  
SHEET NO. 3



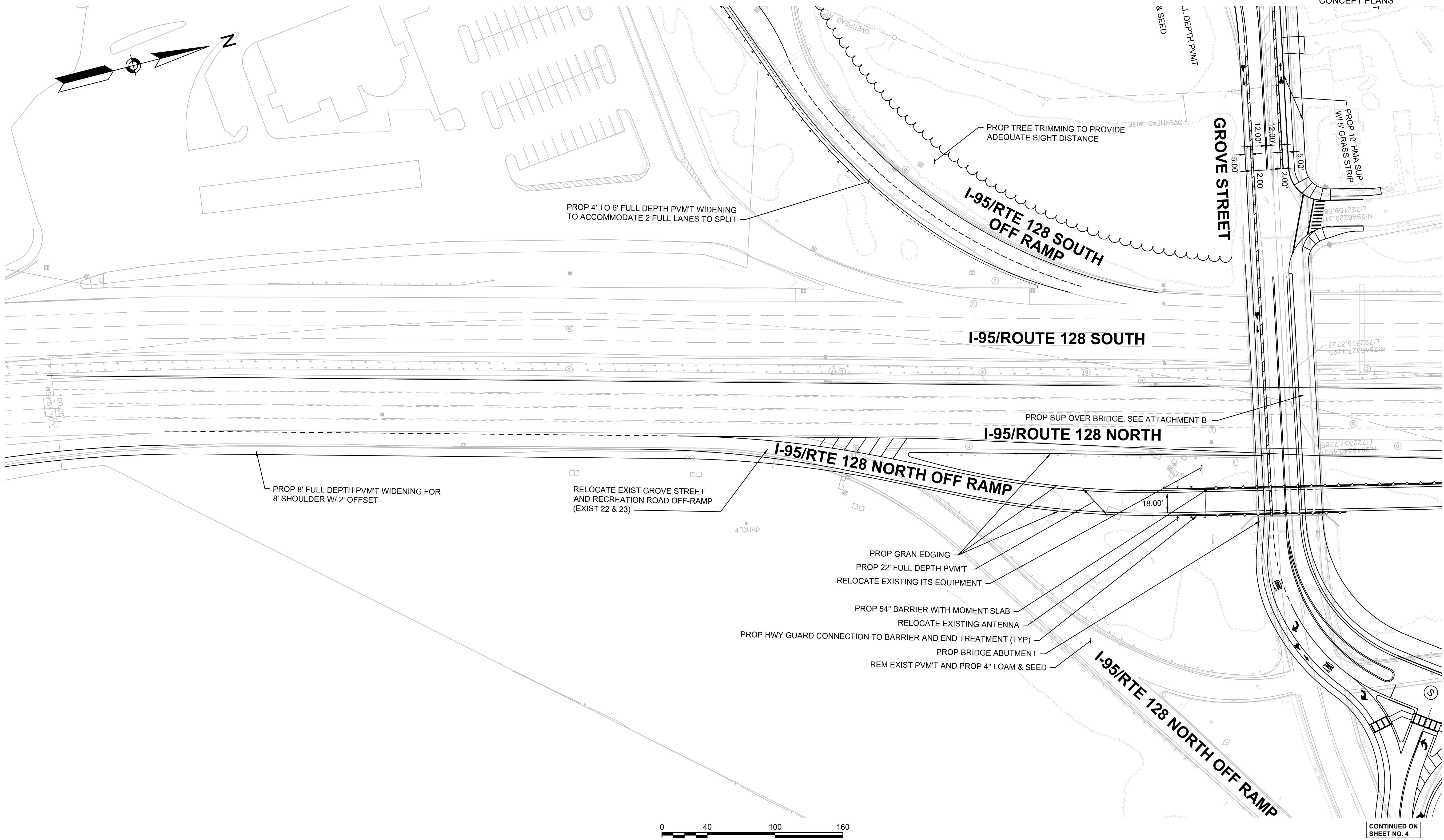


NEWTON RT 128/ I-95 & GROVE STREET			
STATE	FED. AID PROJ. NO.	SHEET NO.	TOTAL SHEETS
MASS.	####	5	7
PROJECT FILE NO. 607940			

RIVERSIDE MIXED USE DEVELOPMENT  
CONCEPT PLANS

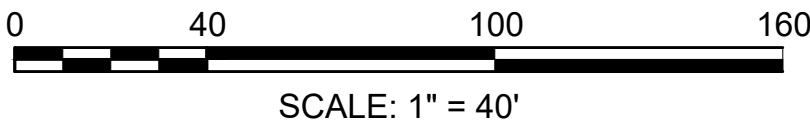
CONTINUED ON  
SHEET NO. 1

RIVERSIDE MIXED USE DEVELOPMENT - OFF SITE IMPROV CONCEPT PLAN - GENDWIG  
Plotted on 18-Jun-2020 1:04 PM



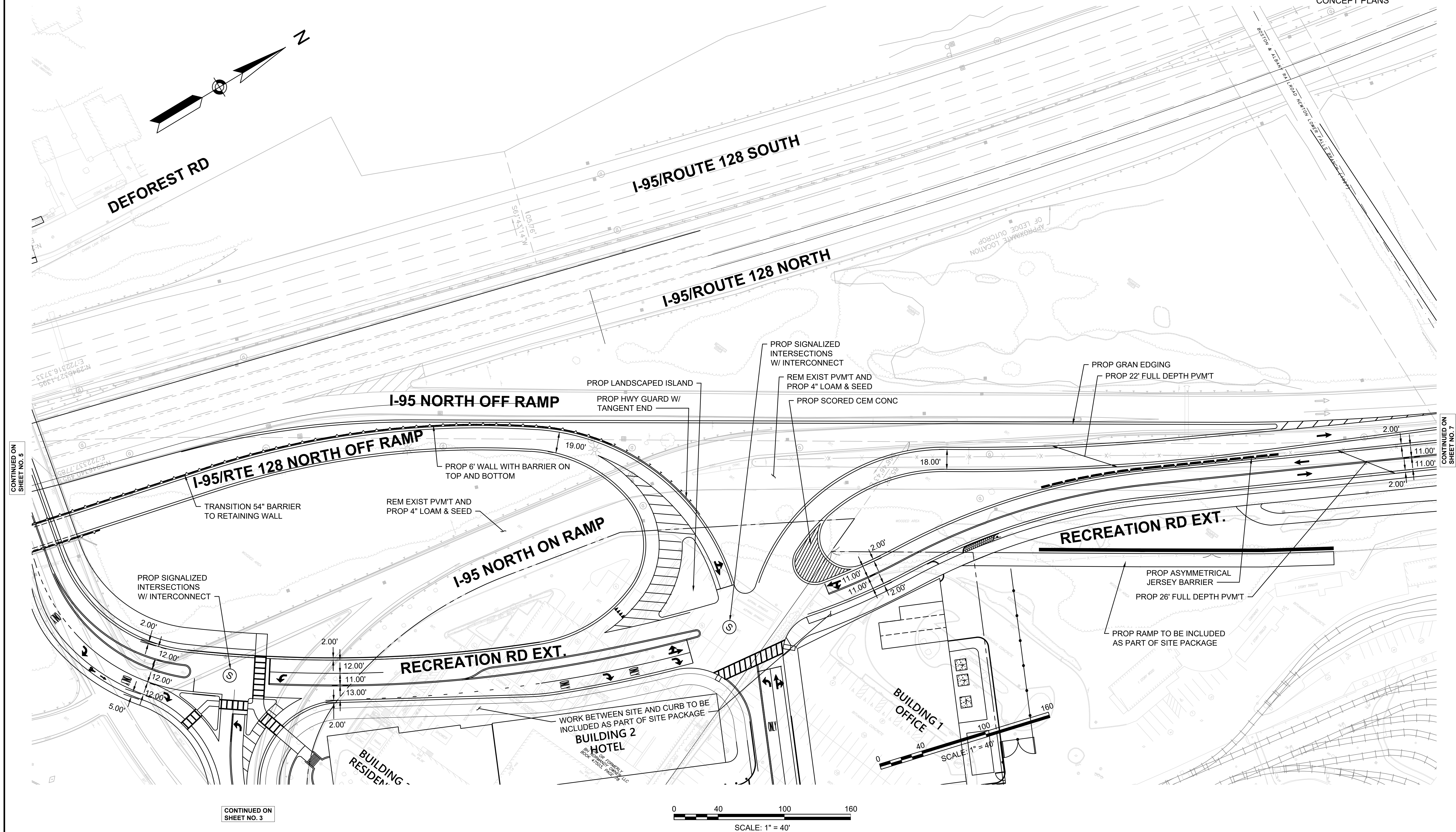
CONTINUED ON  
SHEET NO. 6

CONTINUED ON  
SHEET NO. 4



NEWTON RT 128/ I-95 & GROVE STREET			
STATE	FED. AID PROJ. NO.	SHEET NO.	TOTAL SHEETS
MASS.	####	6	7
PROJECT FILE NO. 607940			

RIVERSIDE MIXED USE DEVELOPMENT  
CONCEPT PLANS





NEWTON RT 128/ I-95 & GROVE STREET			
STATE	FED. AID PROJ. NO.	SHEET NO.	TOTAL SHEETS
MASS.	####	7	7
PROJECT FILE NO. 607940			

RIVERSIDE MIXED USE DEVELOPMENT  
CONCEPT PLANS

