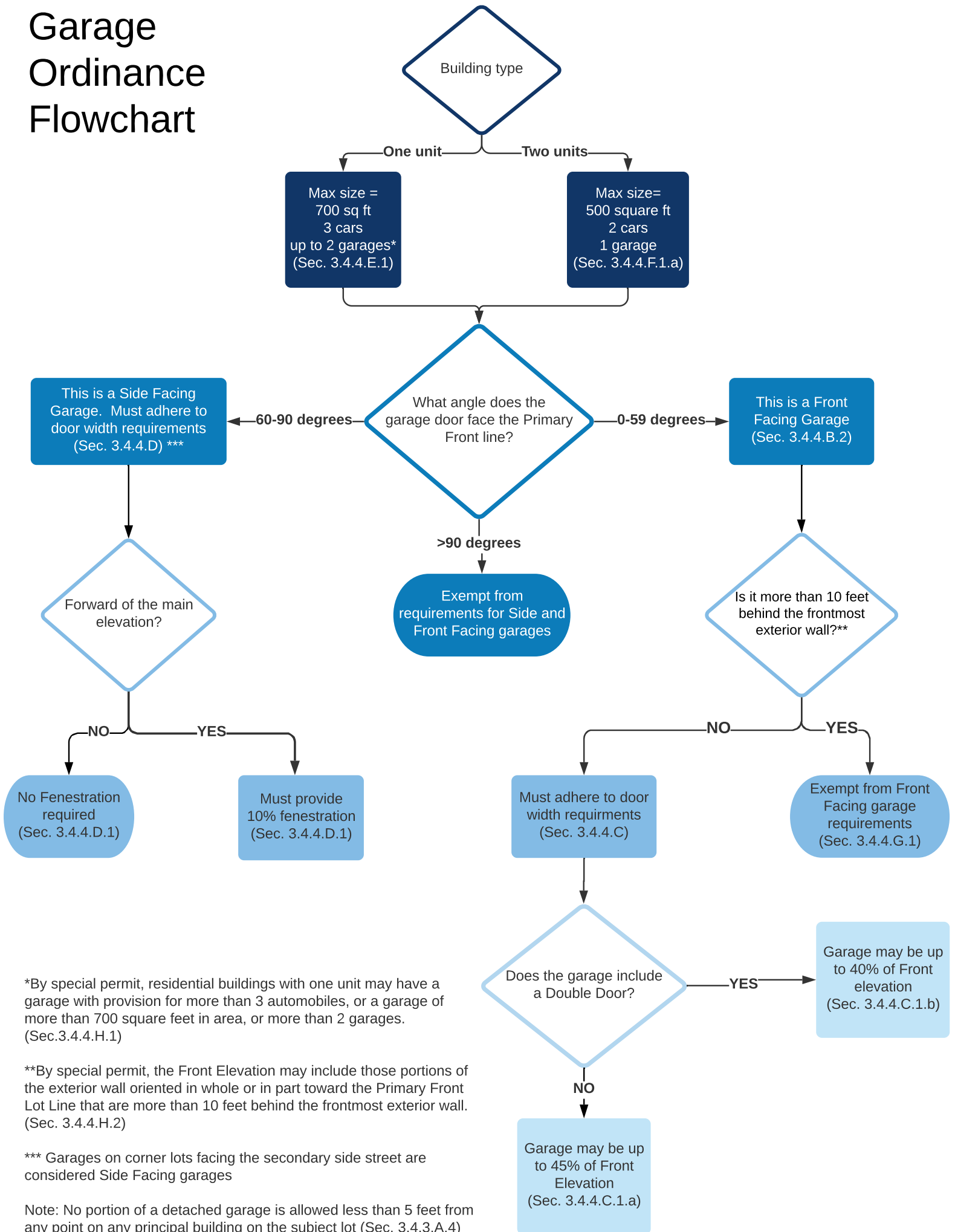


# Garage Ordinance Flowchart



\*By special permit, residential buildings with one unit may have a garage with provision for more than 3 automobiles, or a garage of more than 700 square feet in area, or more than 2 garages. (Sec.3.4.4.H.1)

\*\*By special permit, the Front Elevation may include those portions of the exterior wall oriented in whole or in part toward the Primary Front Lot Line that are more than 10 feet behind the frontmost exterior wall. (Sec. 3.4.4.H.2)

\*\*\* Garages on corner lots facing the secondary side street are considered Side Facing garages

Note: No portion of a detached garage is allowed less than 5 feet from any point on any principal building on the subject lot (Sec. 3.4.3.A.4)