



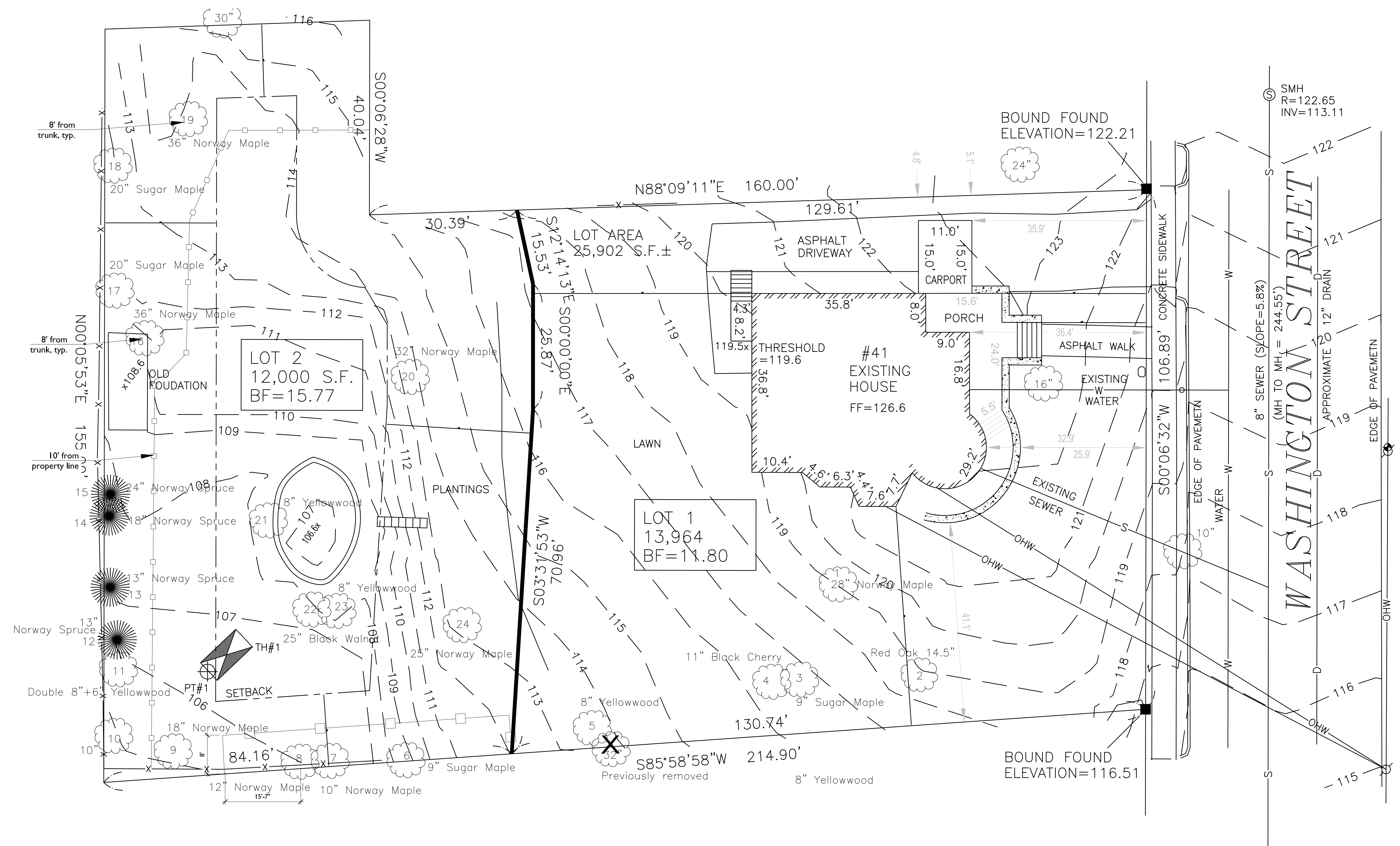
41 WASHINGTON STREET
NEWTON, MA

TREE PROTECTION PLAN

Project #:	Date: Nov. 2020
Drawn by: KC	Reviewed: BH
Scale: AS NOTED	

Revisions:

L2



Tree Protection Prior to Site Work:
Prior to initiating site work, the Contractor shall install a 6' ht. chain link construction fence as shown on the plan to establish the Tree Protection Zone (TPZ). The Contractor shall not enter the tree protection zone with equipment, store equipment or materials within the TPZ for the duration of the construction project. The TPZ shall be maintained throughout the construction period and may only be removed as specifically directed by the Landscape Architect or Tree Warden.

1. An Arborist shall prune low limbs that may hinder or be damaged by large construction equipment or that may interfere with building construction. This must be performed by a Certified Arborist.
2. Install 2 to 3 inches of woodchip mulch or a blend of composted woodchips and bark mulch over the entire TPZ as shown and as directed by Arborist/Landscape Architect.
3. The tree protection fence shall not be removed until the end of building construction at such time that planting and lawn work will be performed

