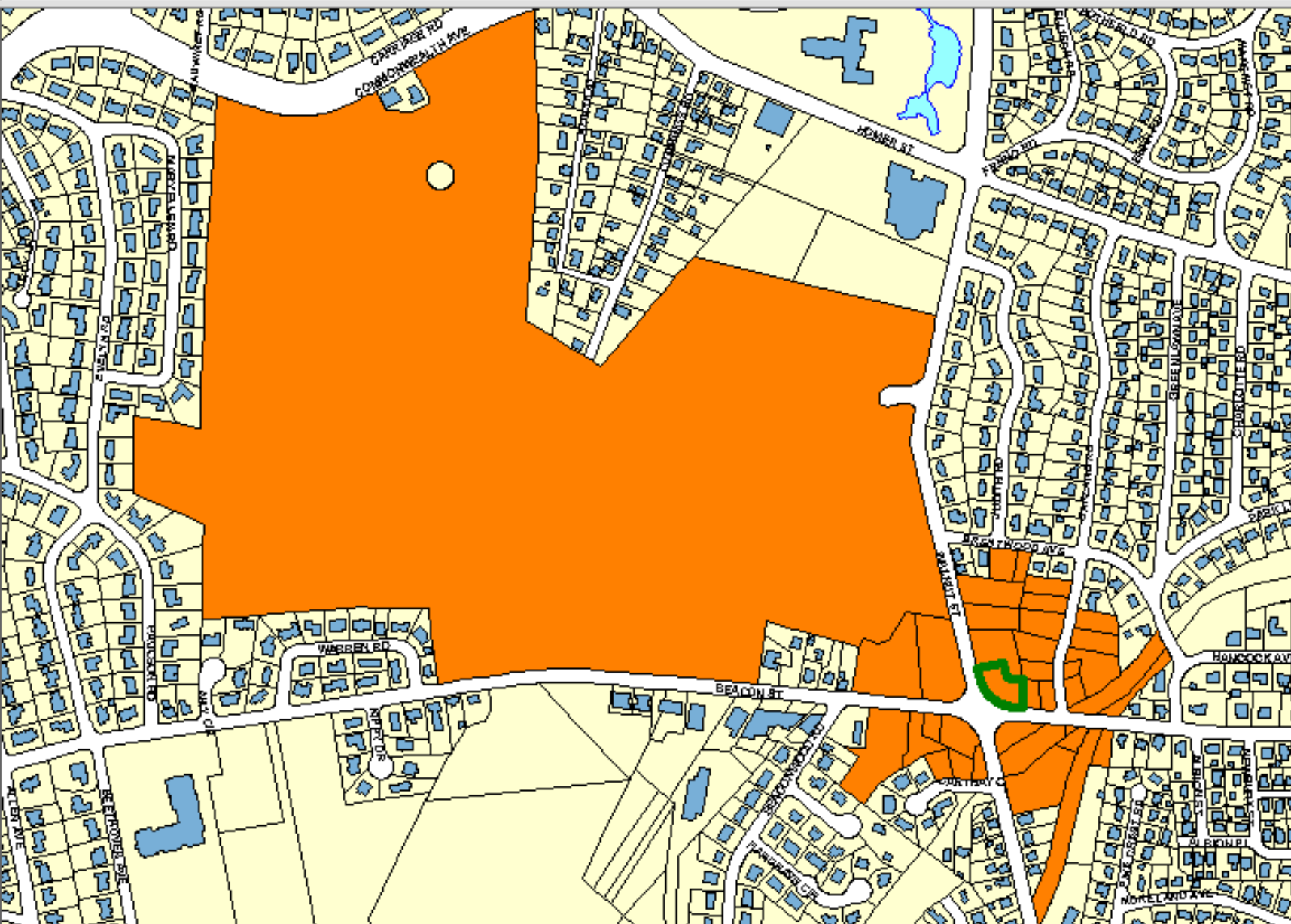


# NEWTON GIS DATA



The information on this map is from the Newton Geographic Information System (GIS). The City of Newton cannot guarantee the accuracy of this information. Each user is responsible for determining the data's suitability for its intended purpose.

City departments will not approve applications based solely on GIS data. City staff correct errors as they are identified.

-  Buildings
-  Property Lines
-  Lakes & Rivers
-  Easements

Property Location:

**1087 BEACON ST**

Property ID:

**64005 0001**

Land Use: Lot Size:

340

16925 Sq. Ft.



1 inch = Approximately 586 Feet

MAP DATE: April 14, 2021