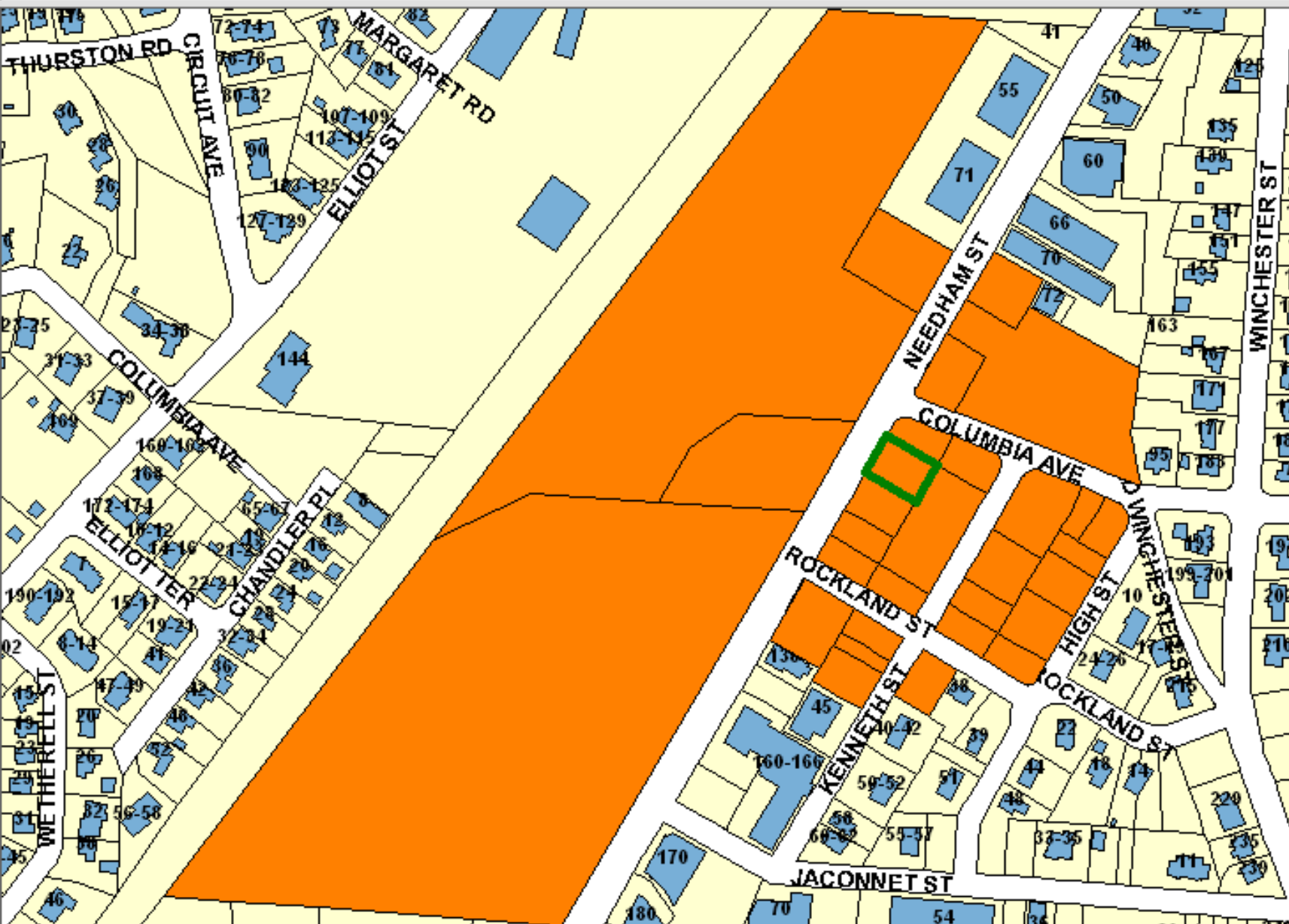


# NEWTON GIS DATA



The information on this map is from the Newton Geographic Information System (GIS). The City of Newton cannot guarantee the accuracy of this information. Each user is responsible for determining the data's suitability for its intended purpose.

City departments will not approve applications based solely on GIS data. City staff correct errors as they are identified.

-  Buildings
-  Property Lines
-  Lakes & Rivers
-  Easements

Property Location:

**104 NEEDHAM ST**

Property ID:

**83012 0008**

Land Use: Lot Size:

325

7500 Sq. Ft.



1 inch = Approximately 285 Feet

MAP DATE: April 14, 2021