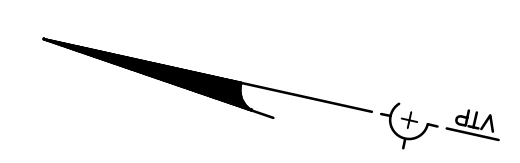
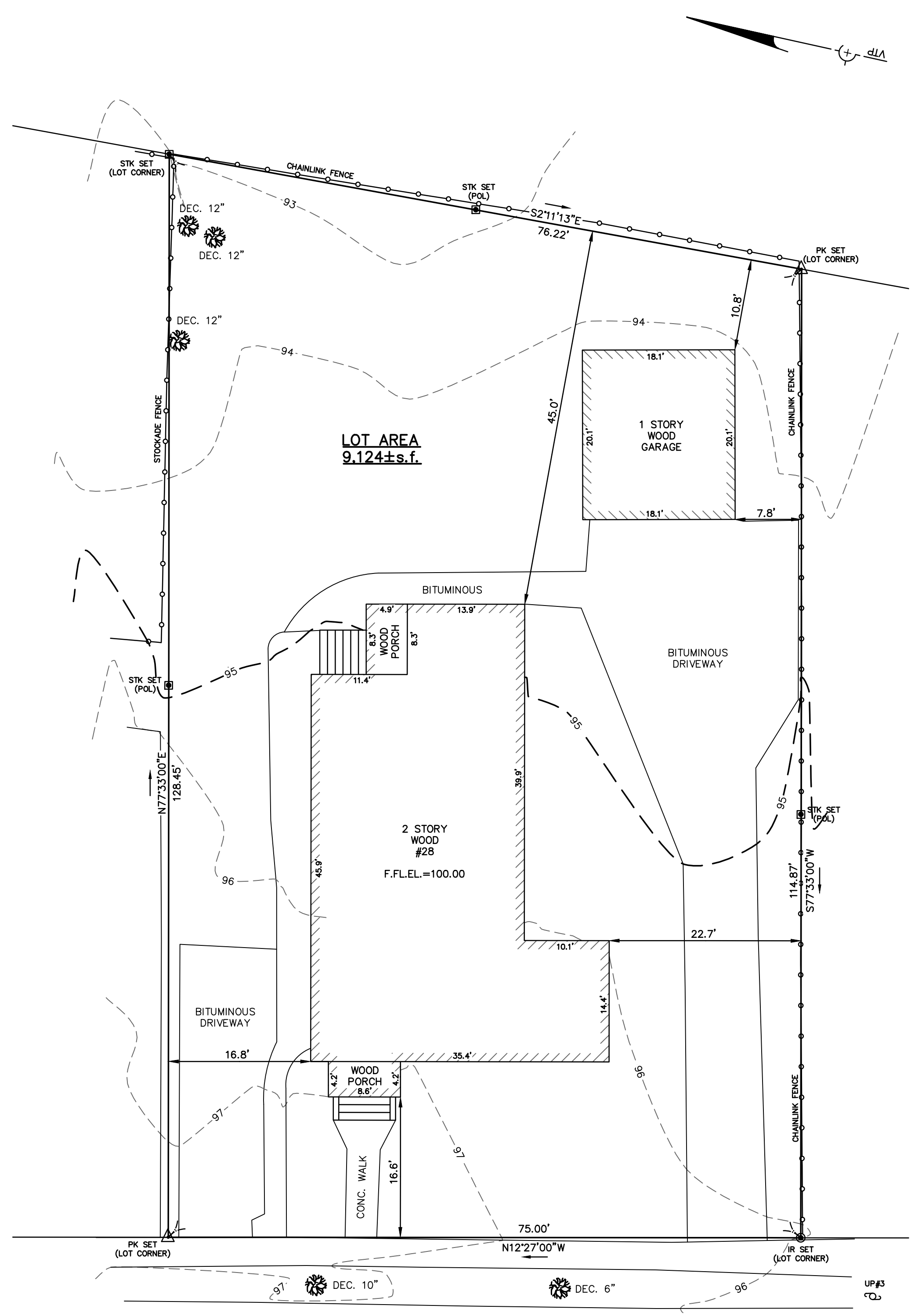


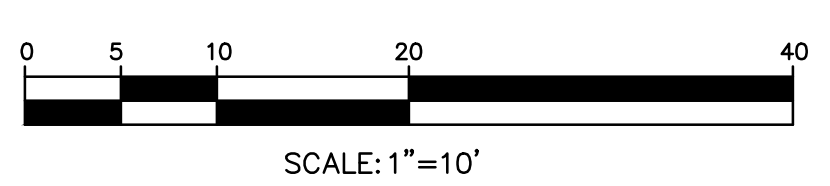
LEGEND

STORM SEWER	— D —
COMBINATION SEWER	— CS —
SANITARY SEWER	— S —
WATER MAIN	— W —
OVERHEAD ELECTRIC	— OE —
UNDER GROUND ELECTRIC	— UE —
GAS MAIN	— G —
CONTOUR	— ZI —
BUILDING	▨
PICKET FENCE	□
CHAINLINK FENCE	x
PROPERTY LINE W/ BEARING DISTANCE	— NB5°23'35"W 346.41' —
CONIFEROUS TREE	☼
DECIDUOUS TREE	☼
SIGN POST	⊕
LIGHT POLE	⊕
GAS VALVE	⊕
WATER VALVE	⊕
UTILITY POLE	⊕
DRAINAGE MANHOLE	⊕
SEWER MANHOLE	⊕
FIRE HYDRANT	⊕
CATCH BASIN	⊕
FIRE CALL BOX	⊕
MAIL BOX	⊕
MONITORING WELL	⊕
ELECTRIC MANHOLE	□ EMH
TOP OF STONE EL.	TOS
BOTTOM OF STONE EL.	BOS
TOP OF WALL EL.	TWL
BOTTOM OF WALL EL.	BWL



SMH
RIM=95.82
INV=90.22

SMH
RIM=90.66
INV=83.61



ZONING CHART		
NEWTON, MASSACHUSETTS		
ZONE: MR-3 (OLD)	SUBMISSION: EXISTING	
REGULATION	REQUIRED	EXISTING
LOT AREA	7,000s.f.	9,124±s.f.
LOT FRONTAGE	70.0'	75.0'
FRONT SETBACK	15.0'	16.6'
SIDE SETBACK	7.5'	16.8'
REAR SETBACK	15.0'	45.0'
BUILDING HEIGHT	36.0'	—
AVERAGE GRADE	—	—
LOT COVERAGE	30.0%	20.4%
OPEN SPACE	50.0%	62.6%

TOPOGRAPHIC SITE PLAN
NEWTON, MASSACHUSETTS
 SHOWING EXISTING CONDITIONS AT
 #28 HARRINGTON STREET

SCALE: 1in.=10ft. DATE: NOVEMBER 22, 2011

PROJECT: 211211



LAND SURVEYORS - CIVIL ENGINEERS. 132
 ADAMS STREET 2ND FLOOR SUITE 3
 NEWTON, MA 02458
 (617) 332-8271