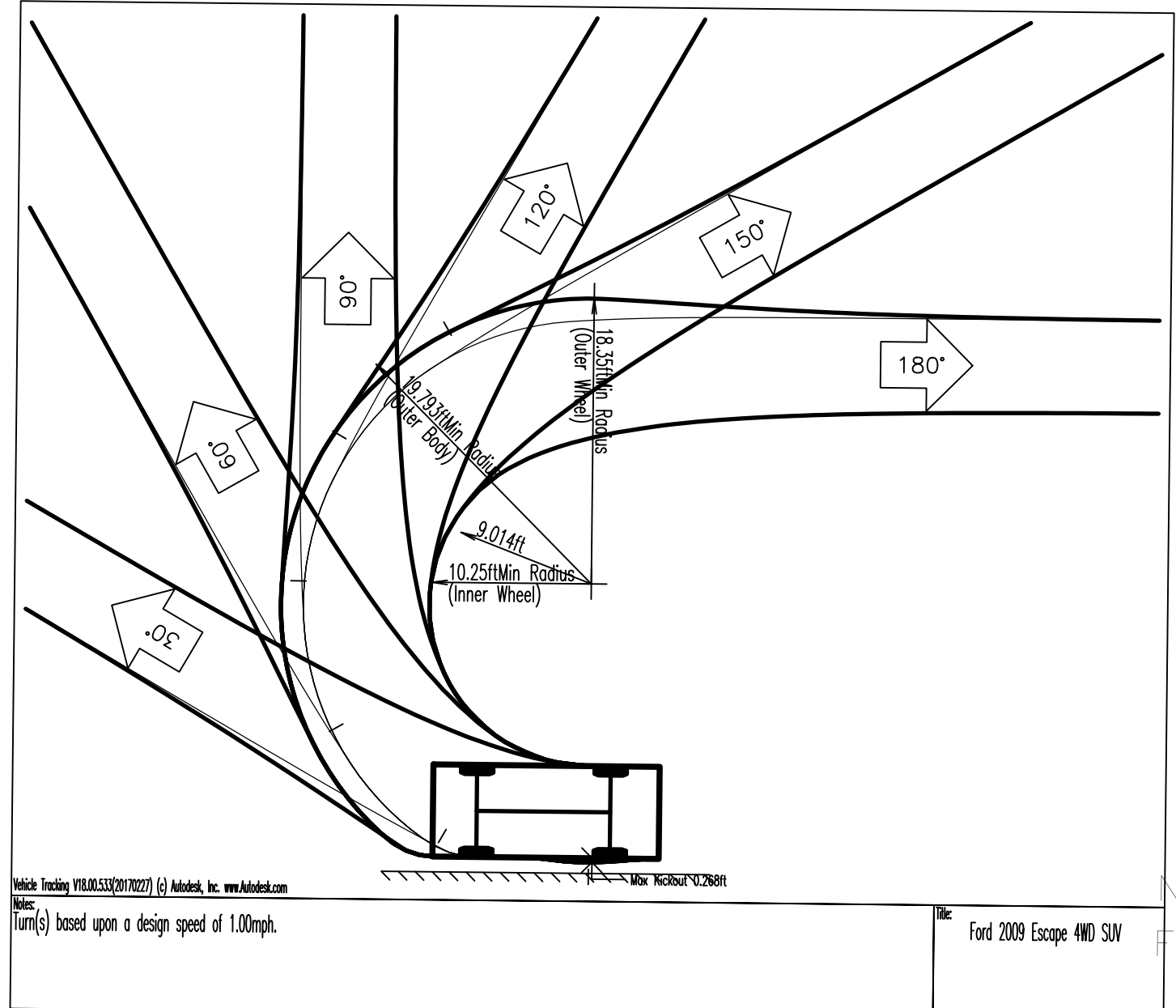
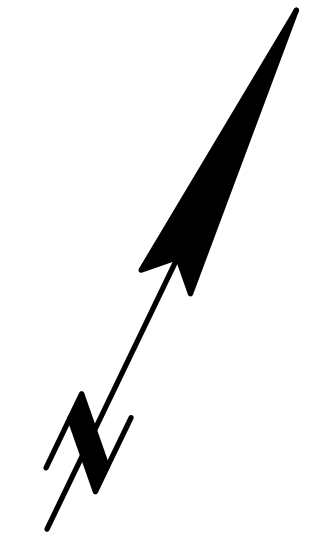


File Name: \\hen-iboadc01\cas\2\Civil\3D Projects\24064 - Talisman Realty - Newton\DWG\24064-S5-turning-ENTER.dwg Saved: 4/23/2021 10:24 AM Plotted: Apr 23, 2021 10:35:58am
 Tab: auto.ctb Plot Style: 1050.ctb Plotted By: JCO

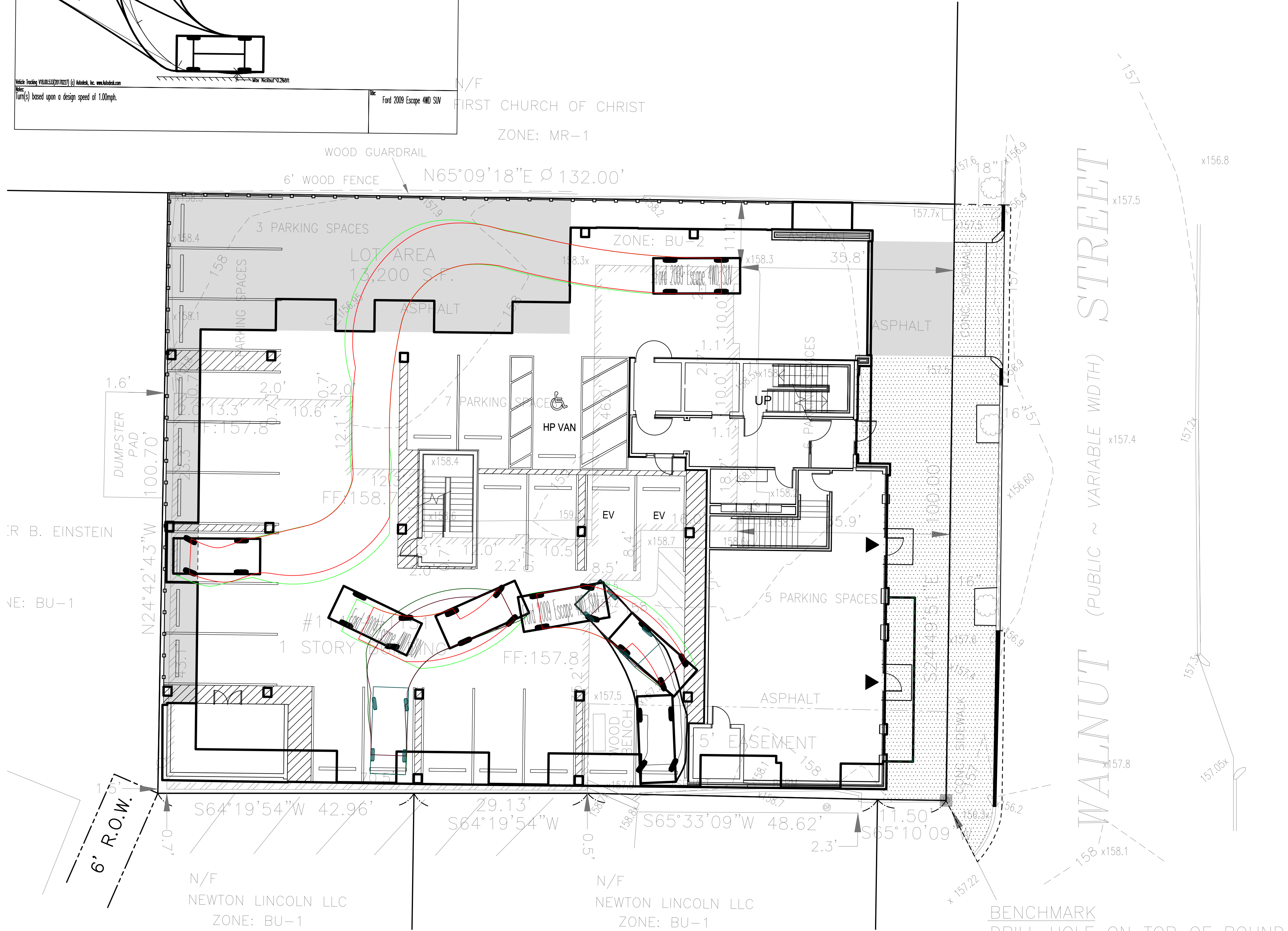


Ford 2009 Escape 4WD SUV
 Overall Length 14.6ft
 Overall Width 5.9ft
 Overall Body Height 5.6ft
 Min Body Ground Clearance 0.675ft
 Track Width 5.9ft
 Lock-to-lock time 4.00s
 Curb to Curb Turning Radius 18.350ft

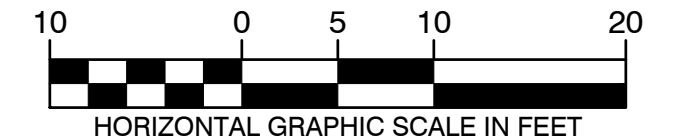


LEGEND

- - - 152 - - - CONTOUR
- - - 152.5 - - - HALF FOOT CONTOUR
- x 154.75 SPOT GRADE
- VERTICAL GRANITE CURB
- - - 12" D - - - DRAIN LINE
- CATCH BASIN
- DRAIN MANHOLE
- YARD DRAIN
- - - 6" S - - - SEWER LINE
- SEWER MANHOLE
- - - 8" W - - - WATER LINE
- ◆ FIRE HYDRANT
- ⊕ GATE VALVE & TEE
- CONCRETE CONCRETE
- BITUMINOUS CONCRETE
- LOAM AND SEED
- RETAINING WALL
- G — GAS SERVICE
- - - E - - - ELECTRIC SERVICE
- Ⓢ SIGN
- Ⓢ NUMBER OF PROPOSED PARKING SPACES



DRAWN BY: DW DESIGNED BY: AD
 CHECKED BY: FK APPROVED BY: AD



REVISIONS

NO.	DATE	DESCRIPTION

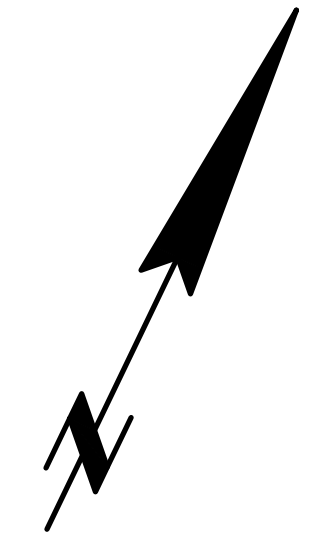
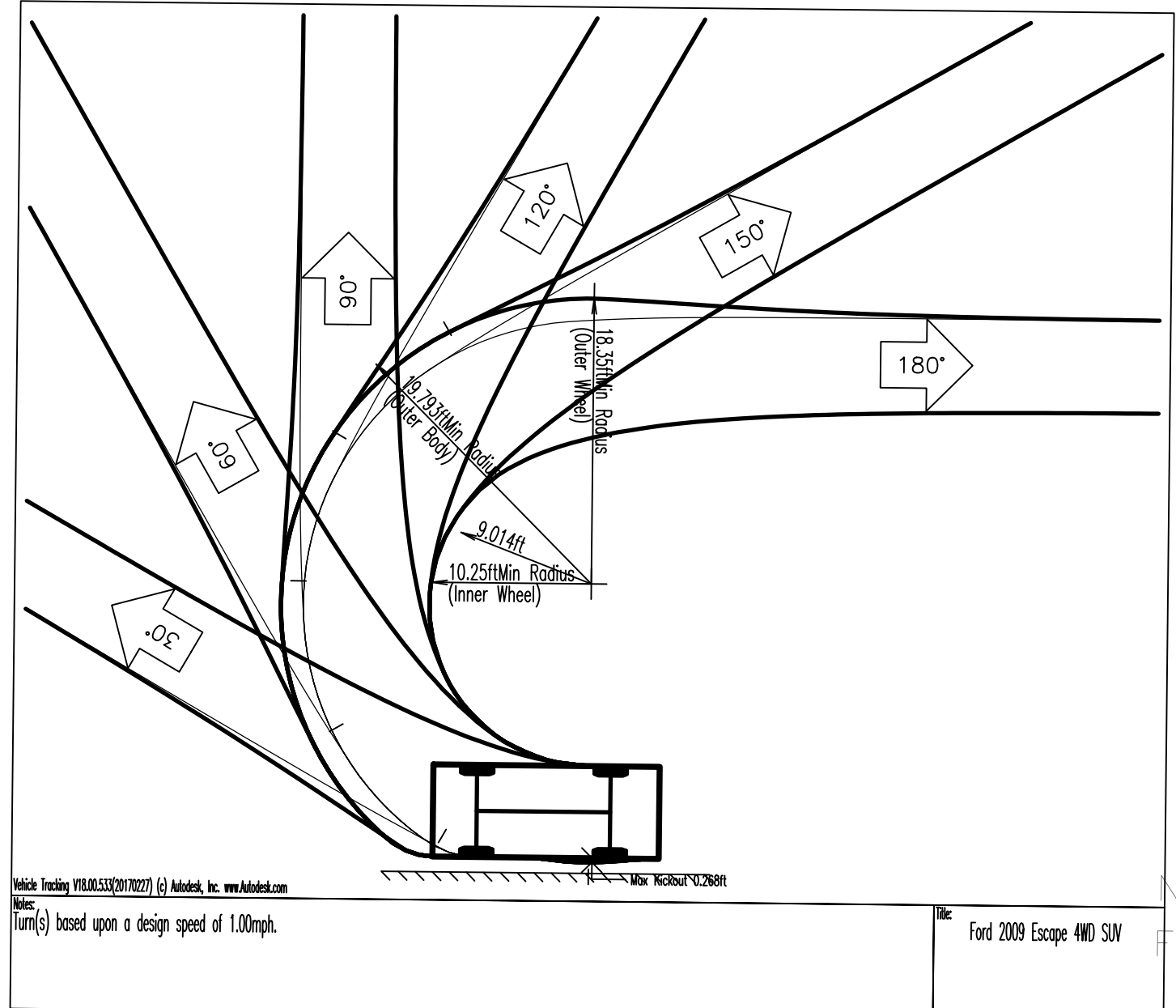
ISSUE	DATE	DESCRIPTION

1149-1151
 WALNUT STREET
 NEWTON, MASSACHUSETTS
 ENTER TURN
 TEMPLATE

H.W. Moore
 ASSOCIATES
 CIVIL ENGINEERING & LAND PLANNING
 A DIVISION OF HANCOCK SURVEY ASSOCIATES
 121 E. Berkeley Street, 4th Floor, Boston, MA 02118
 tel: 617-357-8145 fax: 617-357-8496 web: hwmoores.com

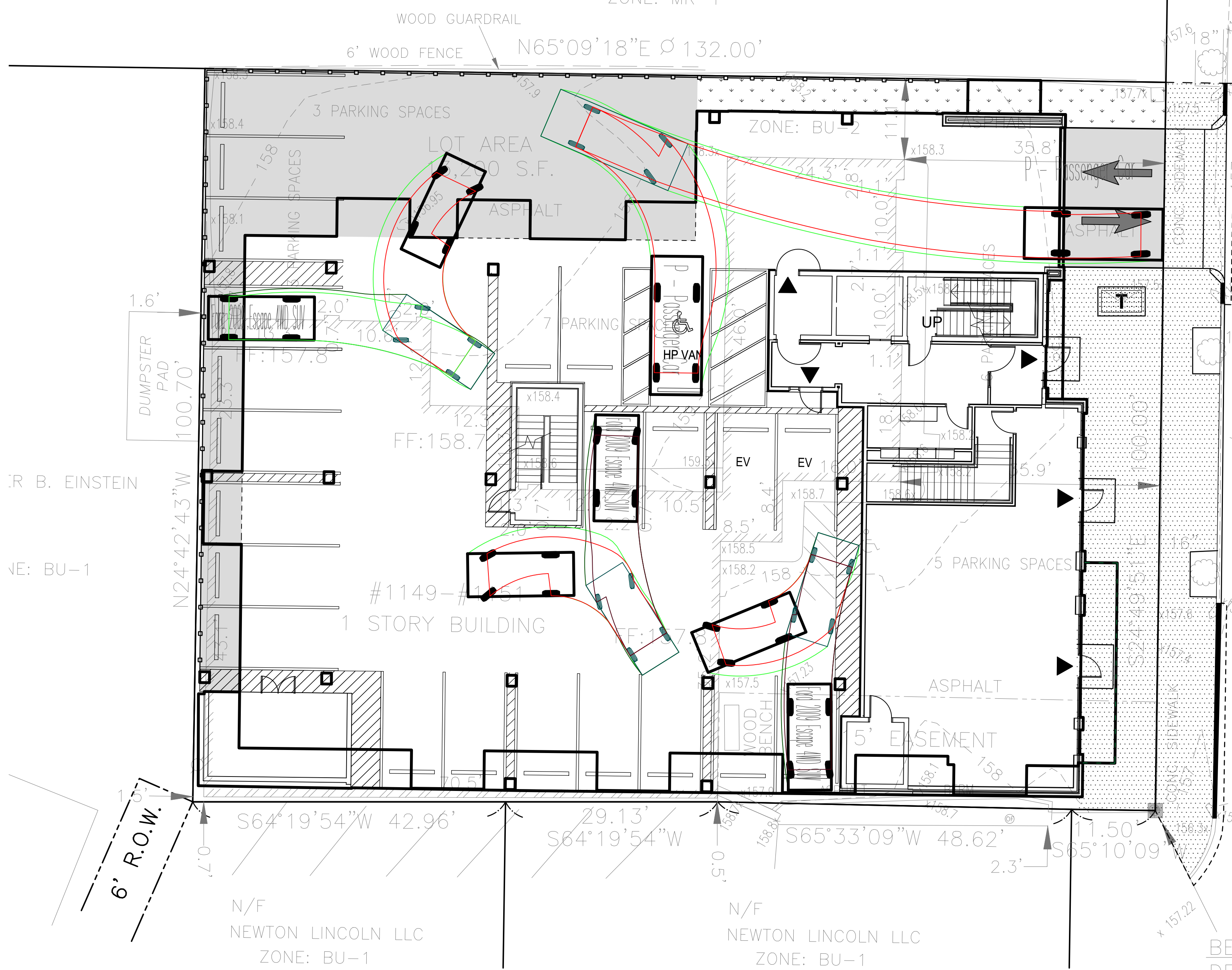
PLAN REFERENCE:
 1. EXISTING CONDITIONS TAKEN FROM A DIGITAL FILE RECEIVED VIA EMAIL ON SEPTEMBER 11, 2020 NAMED "26018EMAIL:20200416.DWG" OF A PLAN TITLED "PLAN OF LAND IN NEWTON, MA, 1149-1151 WALNUT STREET". PLAN DATED APRIL 16, 2020 AND LAST REVISED ON MAY 26, 2020. PLAN WAS PREPARED BY EVERETT M. BROOKS CO.
 2. PROPOSED BUILDING TAKEN FROM A DIGITAL FILE RECEIVED VIA EMAIL ON SEPTEMBER 11, 2020 NAMED "BASEMENT AND PARKING PLAN.DWG". PLAN WAS PREPARED BY THE ARCHITECTURAL PLAN INC. OF CHELSEA, MA.
 3. EXISTING SEWER AND DRAIN LINE INFORMATION TAKEN FROM "TWO RECORD PLANS TITLED 'PLAN AND PROFILE FOR WALNUT STREET SEWER,' DATED JULY 1896, AND 'PLAN AND PROFILE OF DRAIN IN WALNUT STREET,' DATED JULY 1892."

File Name: \\hen-aboado\c01\cas\2\Civil\3D Projects\24064 - Talisman Realty - Newton\DWG\24064-SS-turning-EXIT.dwg Saved: 4/23/2021 10:16 AM Plotted: Apr 23, 2021 10:32:01am
 Tab: auto.dwg Plot Style: 1050.ctb Plotted By: J. Donato

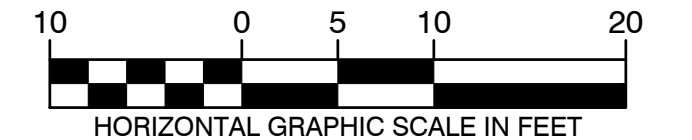


LEGEND

- 152--- CONTOUR
- 152.5--- HALF FOOT CONTOUR
- x154.75 SPOT GRADE
- VERTICAL GRANITE CURB
- 12"D--- DRAIN LINE
- CATCH BASIN
- DRAIN MANHOLE
- YARD DRAIN
- 6"S--- SEWER LINE
- SEWER MANHOLE
- 8"W--- WATER LINE
- FIRE HYDRANT
- GATE VALVE & TEE
- CONCRETE CONCRETE
- BITUMINOUS CONCRETE
- LOAM AND SEED
- RETAINING WALL
- G GAS SERVICE
- E ELECTRIC SERVICE
- SIGN
- ⊙ NUMBER OF PROPOSED PARKING SPACES



DRAWN BY: DW DESIGNED BY: AD
 CHECKED BY: FK APPROVED BY: AD



REVISIONS	
NO.	DESCRIPTION

ISSUE	DATE	DESCRIPTION

1149-1151
 WALNUT STREET
 NEWTON, MASSACHUSETTS
EXIT TURN TEMPLATE

H.W. Moore
 ASSOCIATES
 CIVIL ENGINEERING | LAND PLANNING
 A DIVISION OF HANCOCK SURVEY ASSOCIATES
 121 E. Berkeley Street, 4th Floor, Boston, MA 02118
 tel: 617-357-8145 fax: 617-357-8496 web: hwmoores.com