

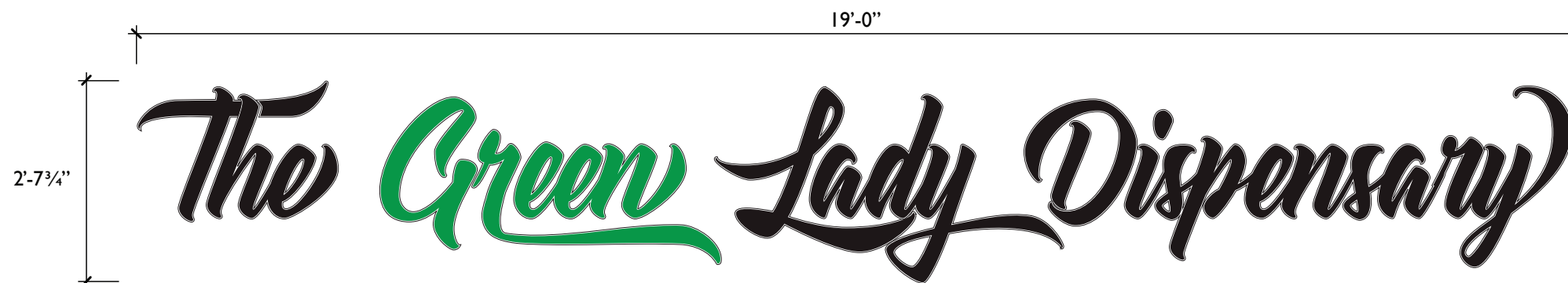
BEACON STREET ELEVATION  
SCALE: 1/8" = 1'-0"

**Exterior Internally Illuminated Channel Letters**

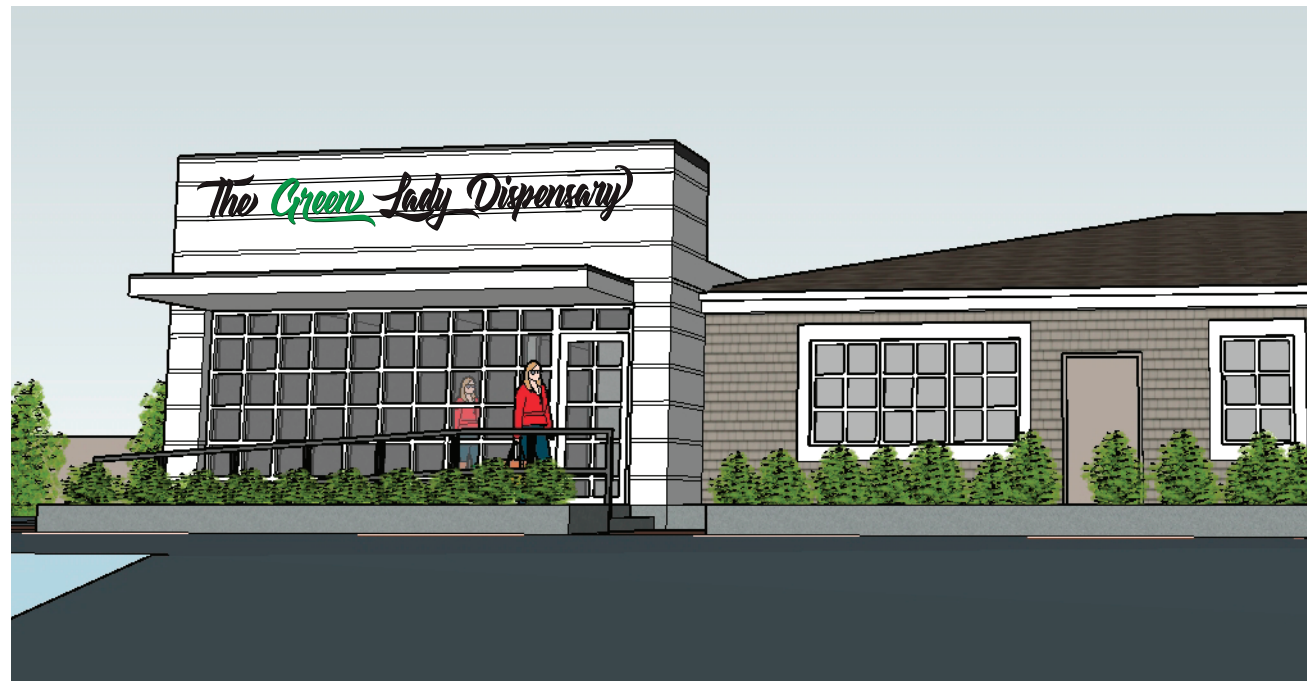
Furnish and Install (1) one set of individual face-lit channel letters consisting of translucent acrylic faces; Black during the day, illuminates white at night; Green faces will illuminate green at night. Individual channel characters will have aluminum returns and backs, sides painted white. Internal LED illumination with remote power supplies, UL approved. All letters will be mechanically fastened on building fascia via concealed non-corrosive fasteners.

Signage is 2'-7 3/4" x 19'-0"

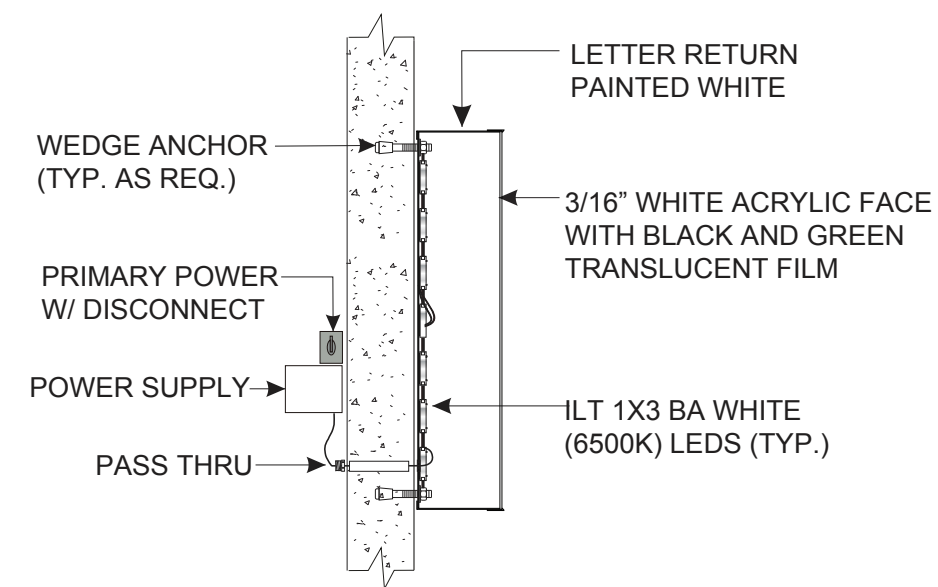
Total: 50.27 square feet



SIGN DETAIL  
SCALE: 1/2" = 1'-0"



COMP  
SCALE: NTS



SECTION VIEW  
SCALE: NTS

PROJECT: THE GREEN LADY DISPENSARY 740 BEACON ST., NEWTON, MA

DATE: MARCH 1, 2021 SCALE: VARIES APPROVAL:

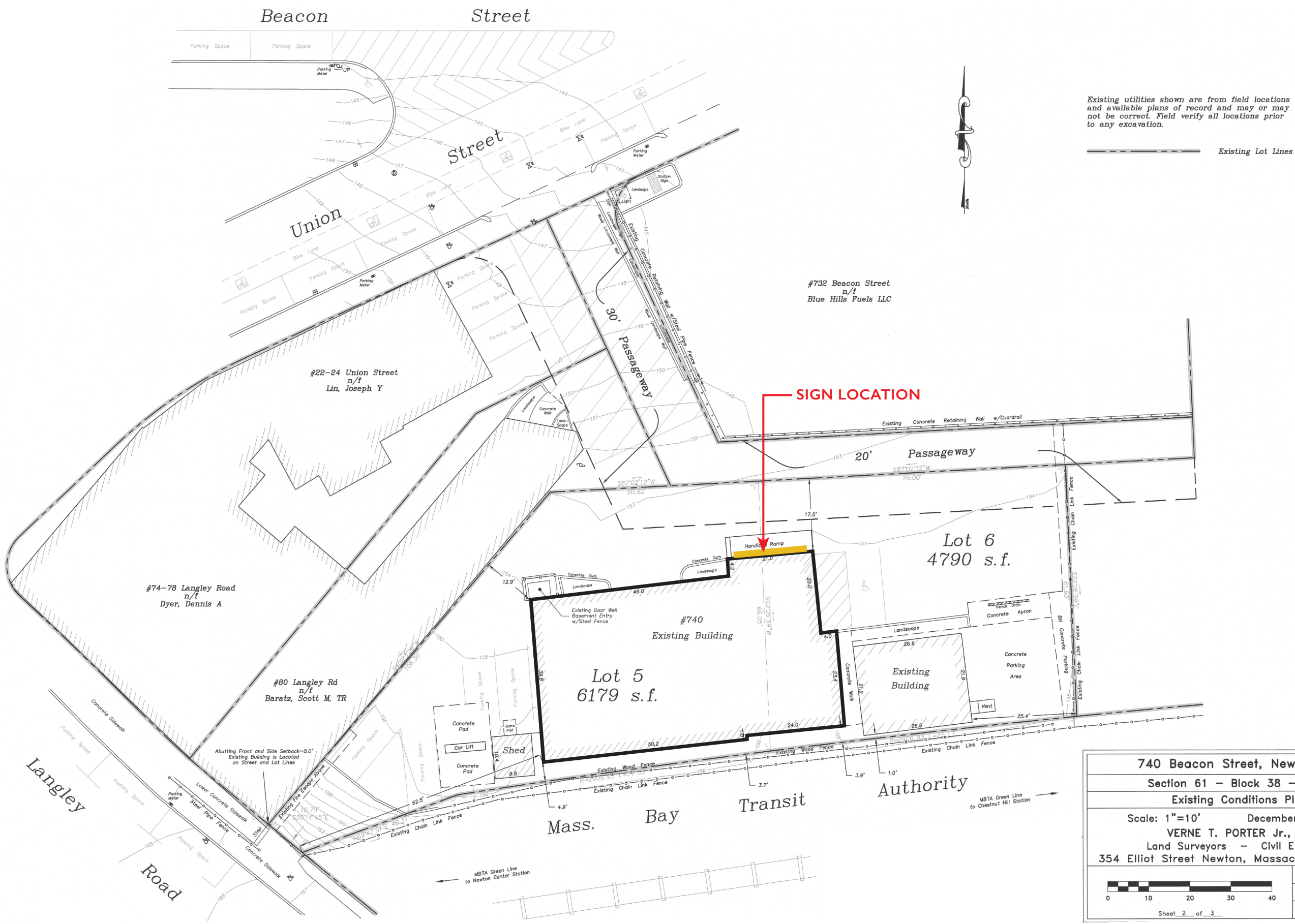
SIGNWORKS GROUP 60 ARSENAL STREET WATERTOWN MA 02472

f 617.924.0279

t 617.924.0292

SWG-INC.COM

SWG



Existing utilities shown are from field locations and available plans of record and may or may not be correct. Field verify all locations prior to any excavation.

--- Existing Lot Lines



<b>740 Beacon Street, Newton, MA</b>	
Section 61 - Block 38 - Lot 5	
Existing Conditions Plan	
Scale: 1"=10'	December 21, 2020
VERNE T. PORTER Jr., PLS Land Surveyors - Civil Engineers 354 Elliot Street Newton, Massachusetts 02464	
Sheet 2 of 3	
Project: 20019	
Checked By: V. Porter Jr.	
Drawn By: R. Jardine Jr.	

SITE PLAN

PROJECT: THE GREEN LADY DISPENSARY 740 BEACON ST., NEWTON, MA

DATE: MARCH 1, 2021 SCALE: VARIES APPROVAL:

SIGNWORKS GROUP

60 ARSENAL STREET WATERTOWN MA 02472

f 617.924.0279

SWG-INC.COM

**SWG**