

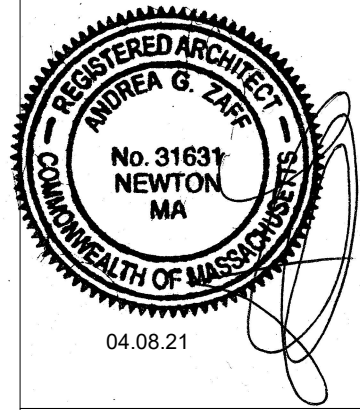
PROJECT

CROWE BARRE STUDIO

47 Lincoln Street
Newton MA 02461

Architect Of Record:

Andrea Zaff
Zaff Architecture
andrea@zaffarch.com
617-888-0659



04.08.21

Designer:

Ana Bonilla
AnaVera Design
anaveradesign.com
ana@anaveradesign.com
857-234-7513

General Contractor:

Sean Scanlon
Unique Ventures LLC
sean@uniqueventuresllc.com
857-498-2474
Lic #CS94548
HIC #198210

FLOOR PLAN

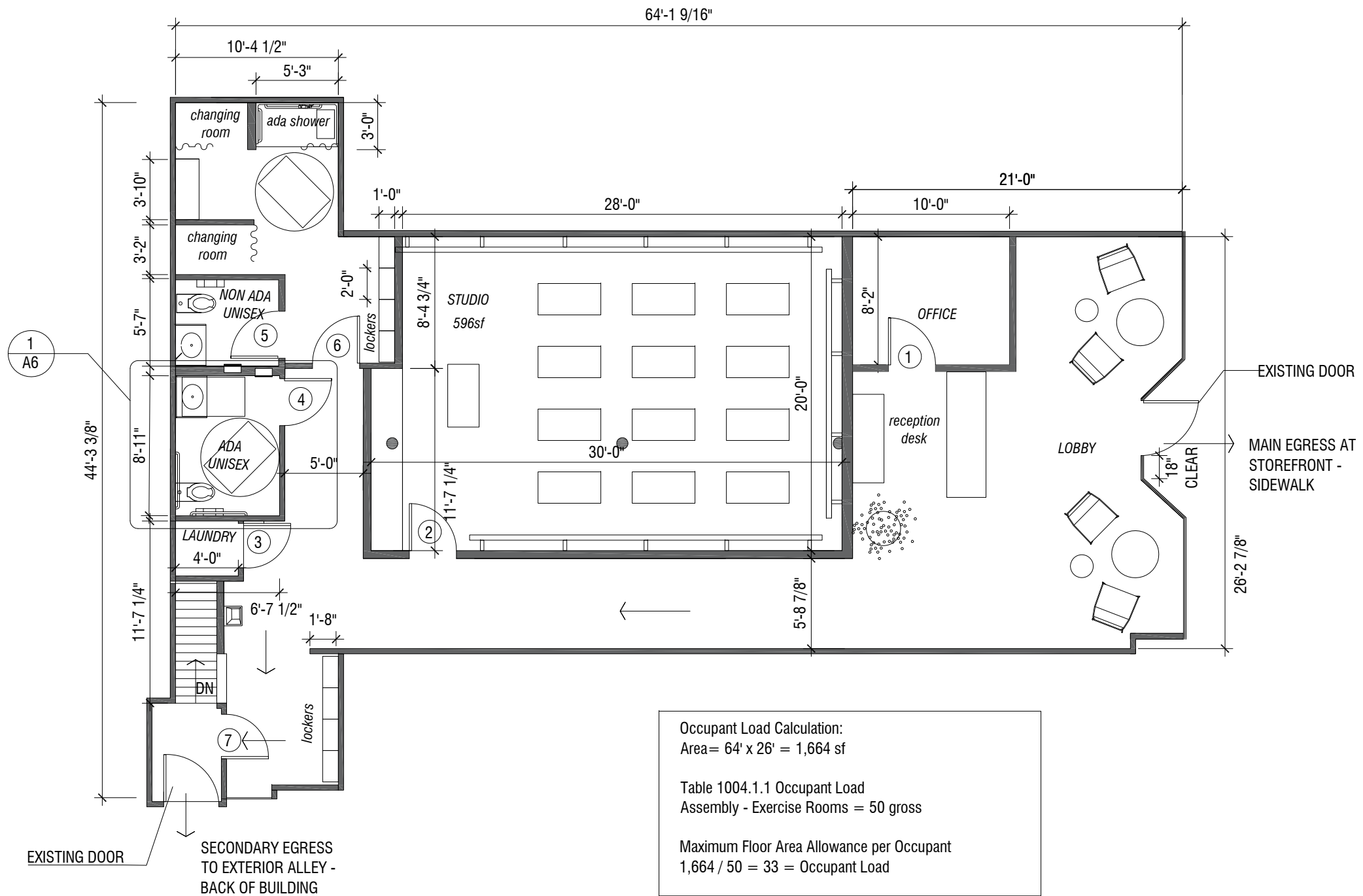
Scale 1/8" = 1'-0"

Drawn by: PP

Checked by: AB

Drawing #:

A1



64'-1 9/16"

10'-4 1/2"

5'-3"

3'-0"

changing room

ada shower

changing room

3'-10"

3'-2"

5'-7"

NON ADA UNISEX

5'-0"

LAUNDRY 4'-0"

8'-11"

11'-7 1/4"

6'-7 1/2"

1'-8"

11'-7 1/4"

DN

lockers

lockers

lockers

lockers

lockers

lockers

lockers

lockers

lockers

lockers

lockers

lockers

lockers

lockers

lockers

lockers

lockers

lockers

lockers

lockers

lockers

lockers

lockers

lockers

lockers

lockers

lockers

lockers

lockers

lockers

lockers

lockers

lockers

lockers

lockers

STUDIO 596sf

8'-4 3/4"

2'-0"

lockers

lockers

lockers

lockers

lockers

lockers

lockers

lockers

lockers

lockers

lockers

lockers

lockers

lockers

lockers

lockers

lockers

lockers

lockers

lockers

lockers

lockers

lockers

lockers

lockers

lockers

lockers

lockers

lockers

lockers

lockers

lockers

lockers

lockers

lockers

lockers

lockers

lockers

OFFICE

8'-2"

1

reception desk

lockers

lockers

lockers

lockers

lockers

lockers

lockers

lockers

lockers

lockers

lockers

lockers

lockers

lockers

lockers

lockers

lockers

lockers

lockers

lockers

lockers

lockers

lockers

lockers

lockers

lockers

lockers

lockers

lockers

lockers

lockers

lockers

lockers

lockers

lockers

lockers

LOBBY

18" CLEAR

lockers

lockers

lockers

lockers

lockers

lockers

lockers

lockers

lockers

lockers

lockers

lockers

lockers

lockers

lockers

lockers

lockers

lockers

lockers

lockers

lockers

lockers

lockers

lockers

lockers

lockers

lockers

lockers

lockers

lockers

lockers

lockers

EXISTING DOOR

MAIN EGRESS AT STOREFRONT - SIDEWALK

lockers

lockers

lockers

lockers

lockers

lockers

lockers

lockers

lockers

lockers

lockers

lockers

lockers

lockers

lockers

lockers

lockers

lockers

lockers

lockers

lockers

lockers

lockers

lockers

lockers

lockers

lockers

lockers

lockers

lockers

lockers

lockers

lockers

Occupant Load Calculation:
 Area = 64' x 26' = 1,664 sf

Table 1004.1.1 Occupant Load
 Assembly - Exercise Rooms = 50 gross

Maximum Floor Area Allowance per Occupant
 1,664 / 50 = 33 = Occupant Load

Note:
 As per 521 CMR 30.30
 a. In each adult public toilet room, at least one water closet and one sink in each location shall be accessible to persons in wheelchairs, or a separate accessible unisex toilet room shall be provided at each location. Adult water closets shall comply with the provisions of 521 CMR 30.1 through 30.13.

30.1.1 The installation of a unisex toilet room in lieu of a fully accessible men's and women's room is permitted by 521 CMR.

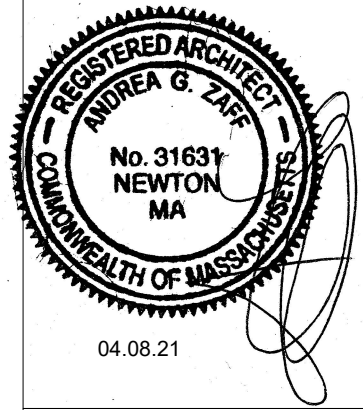
PROJECT

CROWE BARRE STUDIO

47 Lincoln Street
Newton MA 02461

Architect Of Record:

Andrea Zaff
Zaff Architecture
andrea@zaffarch.com
617-888-0659



04.08.21

Designer:

Ana Bonilla
AnaVera Design
anaveradesign.com
ana@anaveradesign.com
857-234-7513

General Contractor:

Sean Scanlon
Unique Ventures LLC
sean@uniqueventuresllc.com
857-498-2474
Lic #CS94548
HIC #198210

FINISH PLAN

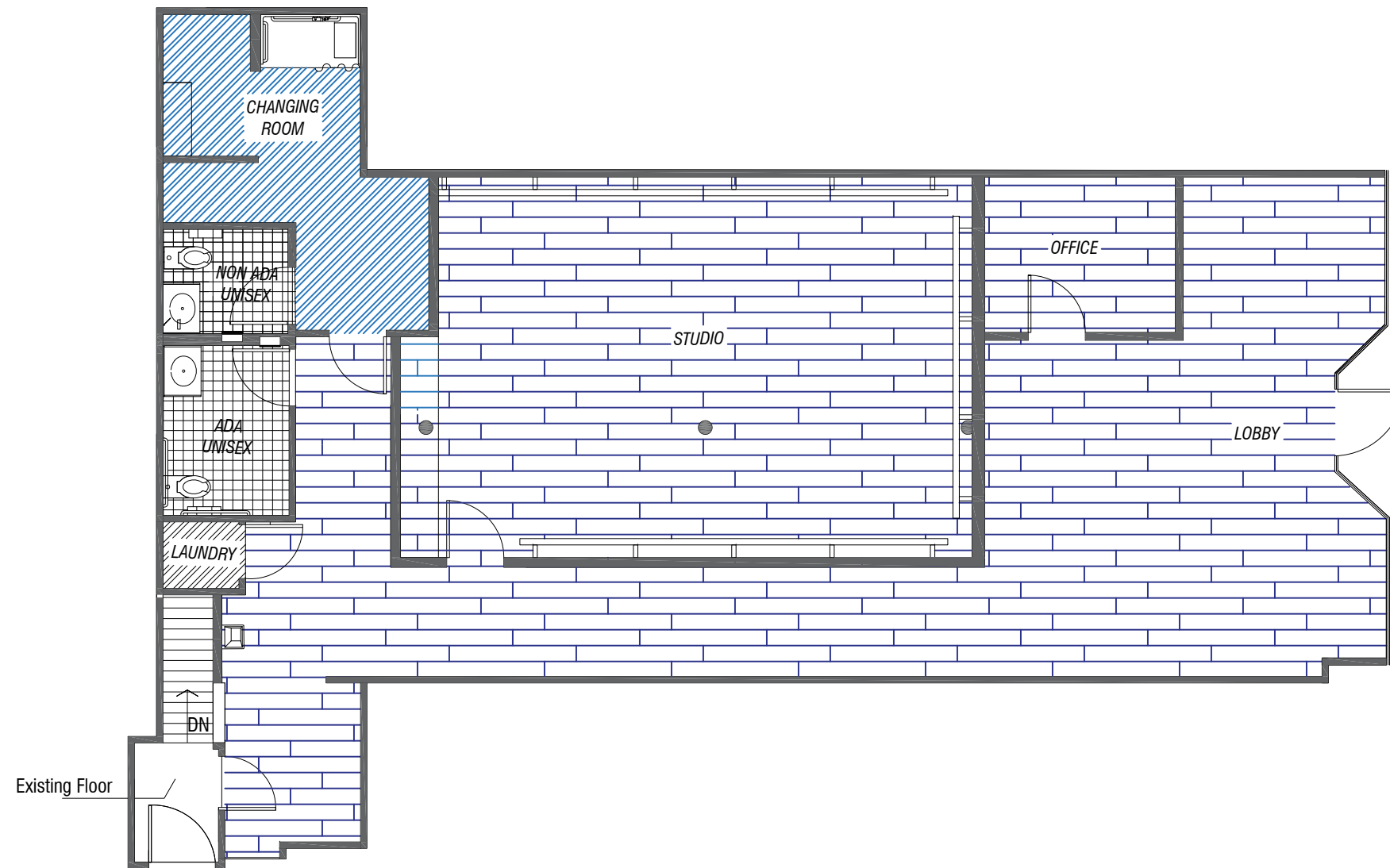
Scale 1/8" = 1'-0"

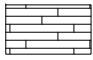
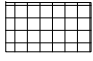
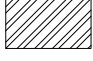
Drawn by: PP

Checked by: AB

Drawing #:

A2



FINISH PLAN LEGEND	
	WF-1: HARDWOOD FLOOR
	TL-1: TILE FLOORING
	LVT-1: VINYL TILE FLOORING

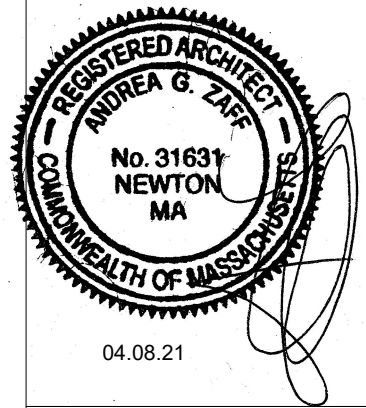
PROJECT

CROWE BARRE STUDIO

47 Lincoln Street
Newton MA 02461

Architect Of Record:

Andrea Zaff
Zaff Architecture
andrea@zaffarch.com
617-888-0659



Designer:

Ana Bonilla
AnaVera Design
anaveradesign.com
ana@anaveradesign.com
857-234-7513

General Contractor:

Sean Scanlon
Unique Ventures LLC
sean@uniqueventuresllc.com
857-498-2474
Lic #CS94548
HIC #198210

REFLECTED CEILING PLAN

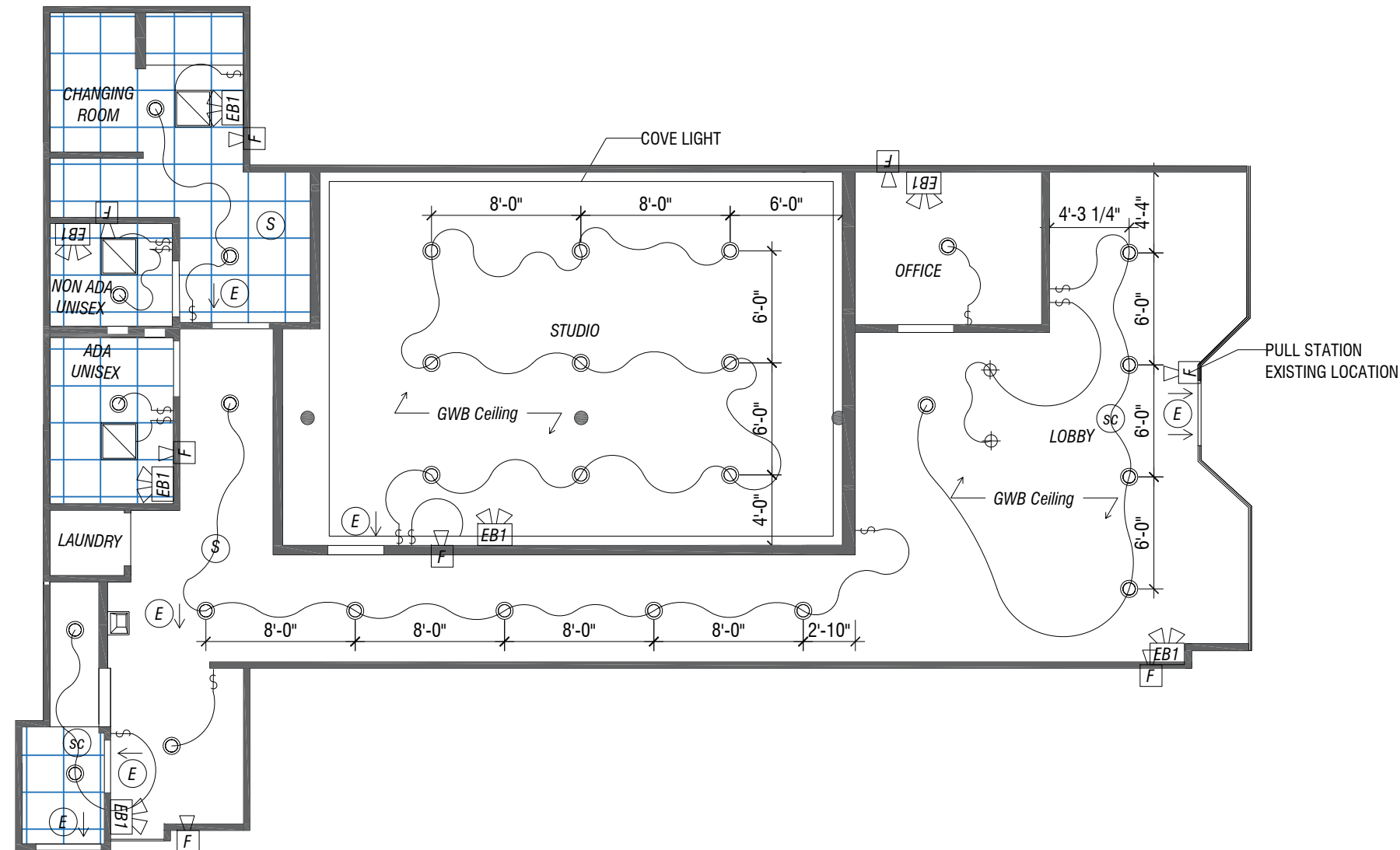
Scale 1/8" = 1'-0"

Drawn by: PP

Checked by: AB

Drawing #:

A3



RCP LEGEND	
	WHITE GWB
	WHITE 2X2 ACT
	8" DOWNLIGHT RECESSED CAN
	PENDANT
	SWITCH
	EXIT SIGN
	FAN/VENT
	SMOKE & CARBONMONOXIDE DETECTOR
	SMOKE DETECTOR
	FIRE ALARM NOTIFICATION APPLIANCE
	EMERGENCY LIGHTING

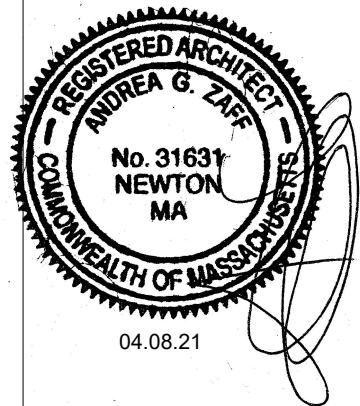
PROJECT

CROWE BARRE STUDIO

47 Lincoln Street
Newton MA 02461

Architect Of Record:

Andrea Zaff
Zaff Architecture
andrea@zaffarch.com
617-888-0659



04.08.21

Designer:

Ana Bonilla
AnaVera Design
anaveradesign.com
ana@anaveradesign.com
857-234-7513

General Contractor:

Sean Scanlon
Unique Ventures LLC
sean@uniqueventuresllc.com
857-498-2474
Lic #CS94548
HIC #198210

POWER PLAN

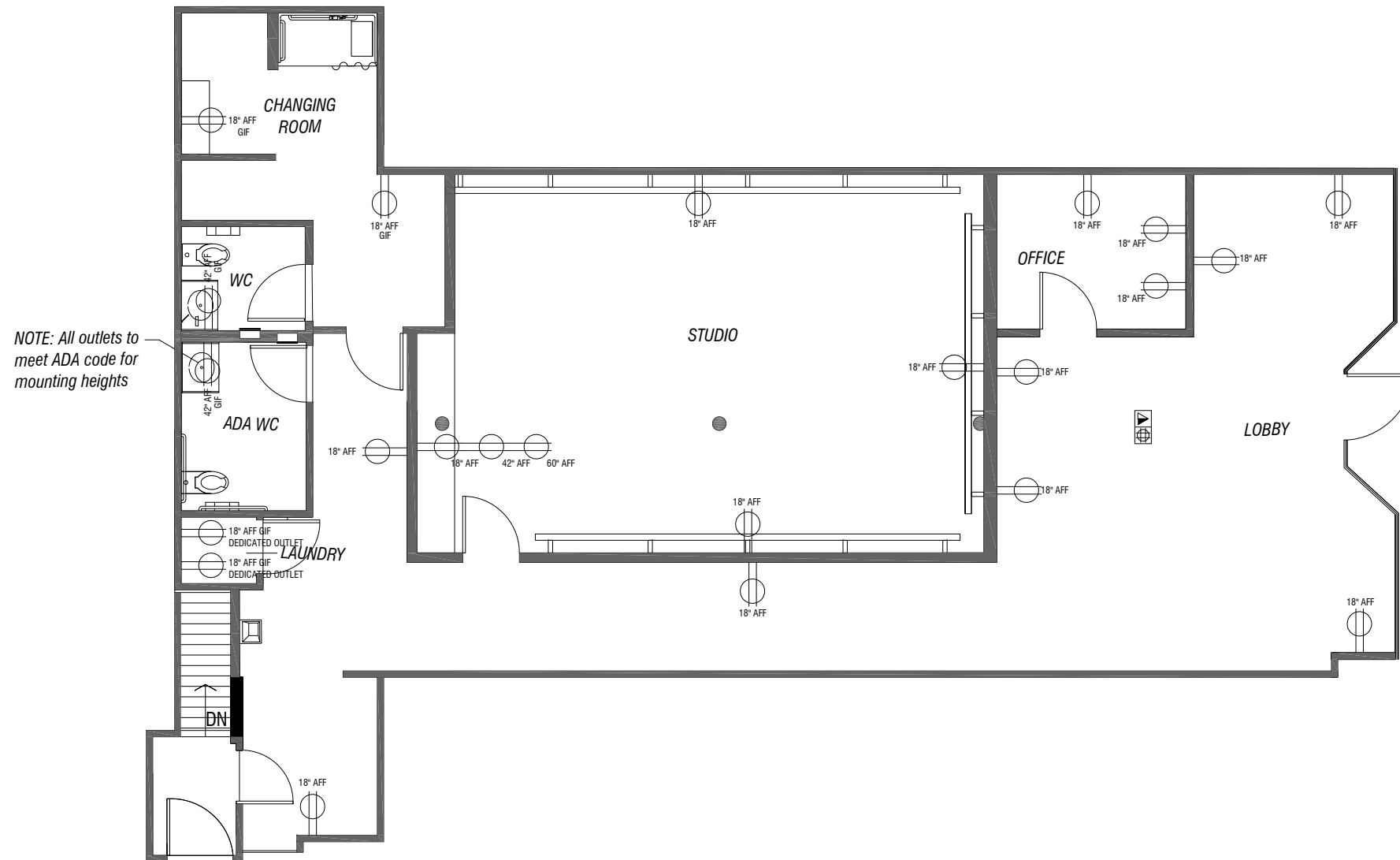
Scale 1/8" = 1'-0"

Drawn by: PP

Checked by: AB

Drawing #:

A4



NOTE: All outlets to meet ADA code for mounting heights

POWER PLAN LEGEND	
	DUPLEX OUTLET
	QUAD OUTLET
	RECESSED FLOOR BOX FOR POWER, TELE/DATA AND A/V
	GROUND FAULT INDICATOR

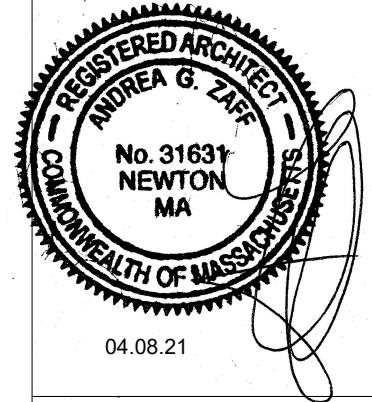
PROJECT

CROWE BARRE STUDIO

47 Lincoln Street
Newton MA 02461

Architect Of Record:

Andrea Zaff,
Zaff Architecture
andrea@zaffarch.com
617-888-0659



04.08.21

Designer:

Ana Bonilla
AnaVera Design
anaveradesign.com
ana@anaveradesign.com
857-234-7513

General Contractor:

Sean Scanlon
Unique Ventures LLC
sean@uniqueventuresllc.com
857-498-2474
Lic #CS94548
HIC #198210

BASEMENT PLAN

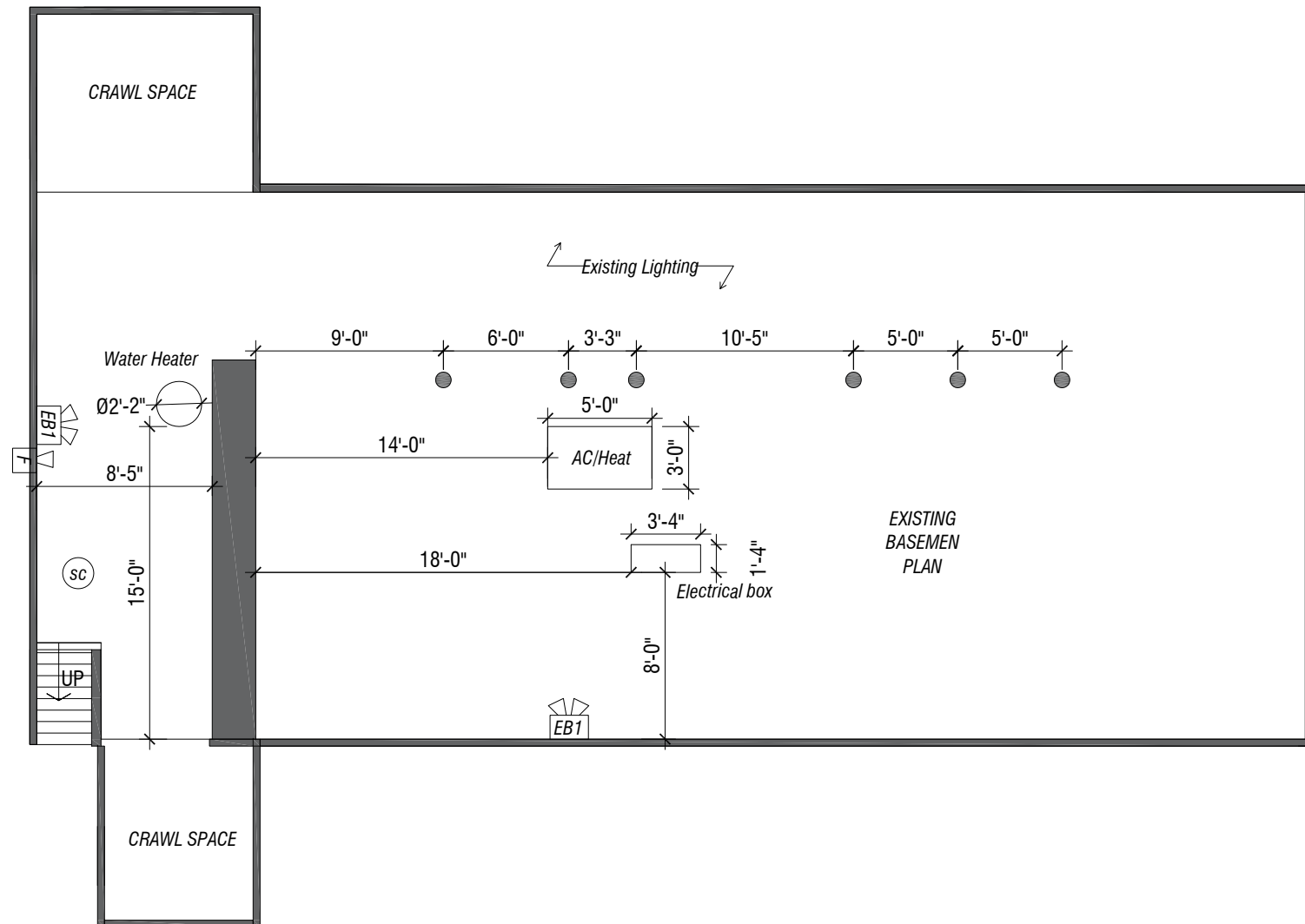
Scale 1/8" = 1'-0"

Drawn by: PP

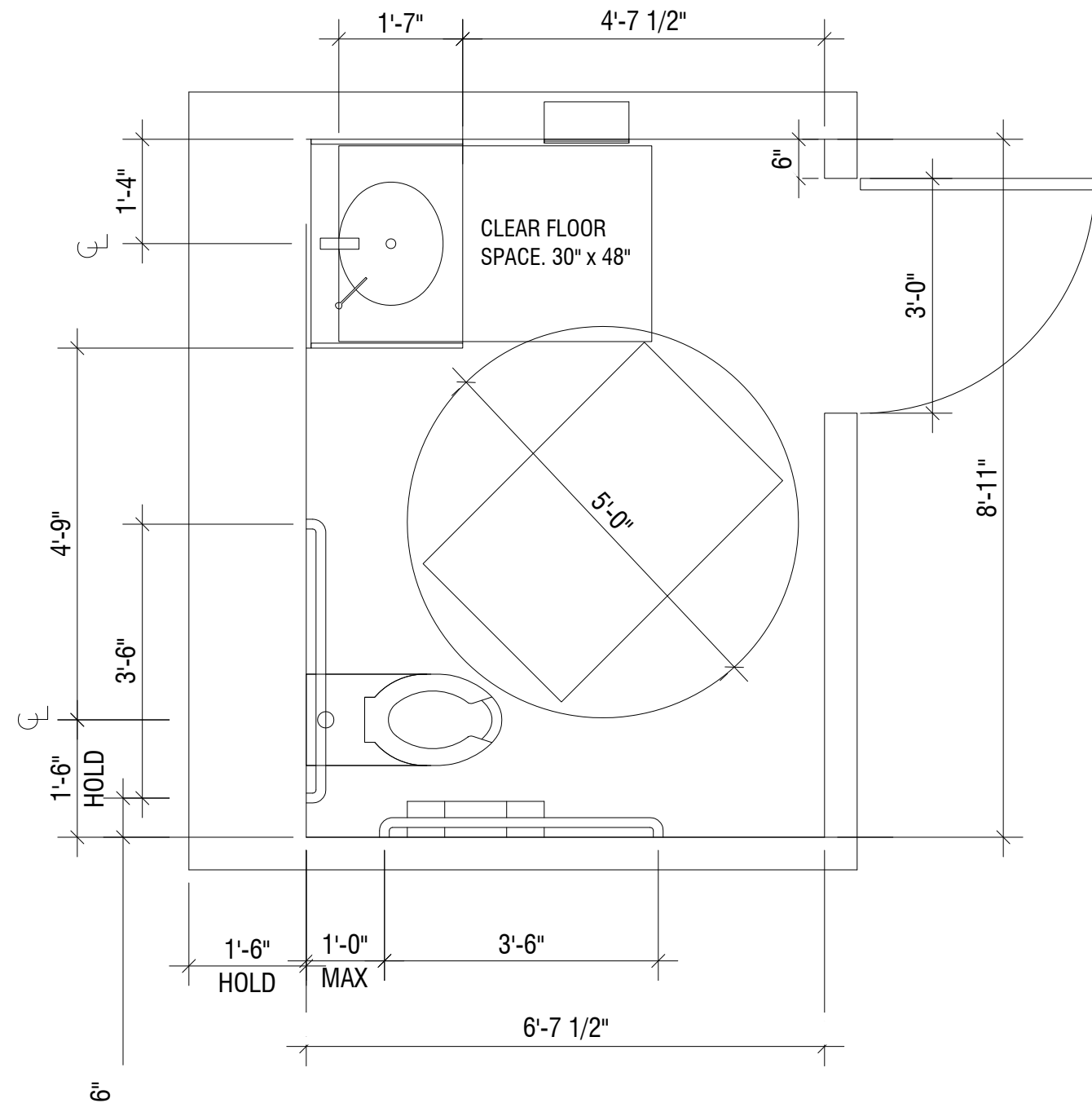
Checked by: AB

Drawing #:

A5



LEGEND	
	SMOKE & CARBONMONOXIDE DETECTOR
	FIRE ALARM NOTIFICATION APPLIANCE
	EMERGENCY LIGHTING



***Accessible Unisex Toilet Room as per 521 CMR 30.7.1 Clear Floor Space**

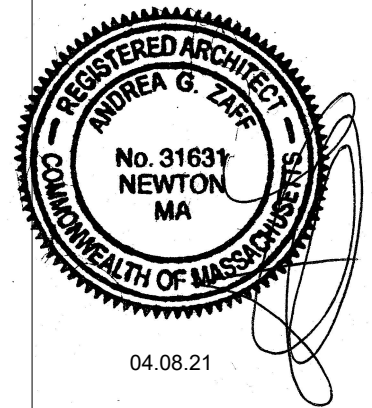
PROJECT

CROWE BARRE
STUDIO

47 Lincoln Street
Newton MA 02461

Architect Of Record:

Andrea Zaff
Zaff Architecture
andrea@zaffarch.com
617-888-0659



Designer:

Ana Bonilla
AnaVera Design
anaveradesign.com
ana@anaveradesign.com
857-234-7513

General Contractor:

Sean Scanlon
Unique Ventures LLC
sean@uniqueventuresllc.com
857-498-2474
Lic #CS94548
HIC #198210

ADA Enlarged
Plan

Scale 1/2" = 1'-0"

Drawn by: PP

Checked by: AB

Drawing #:

A6