

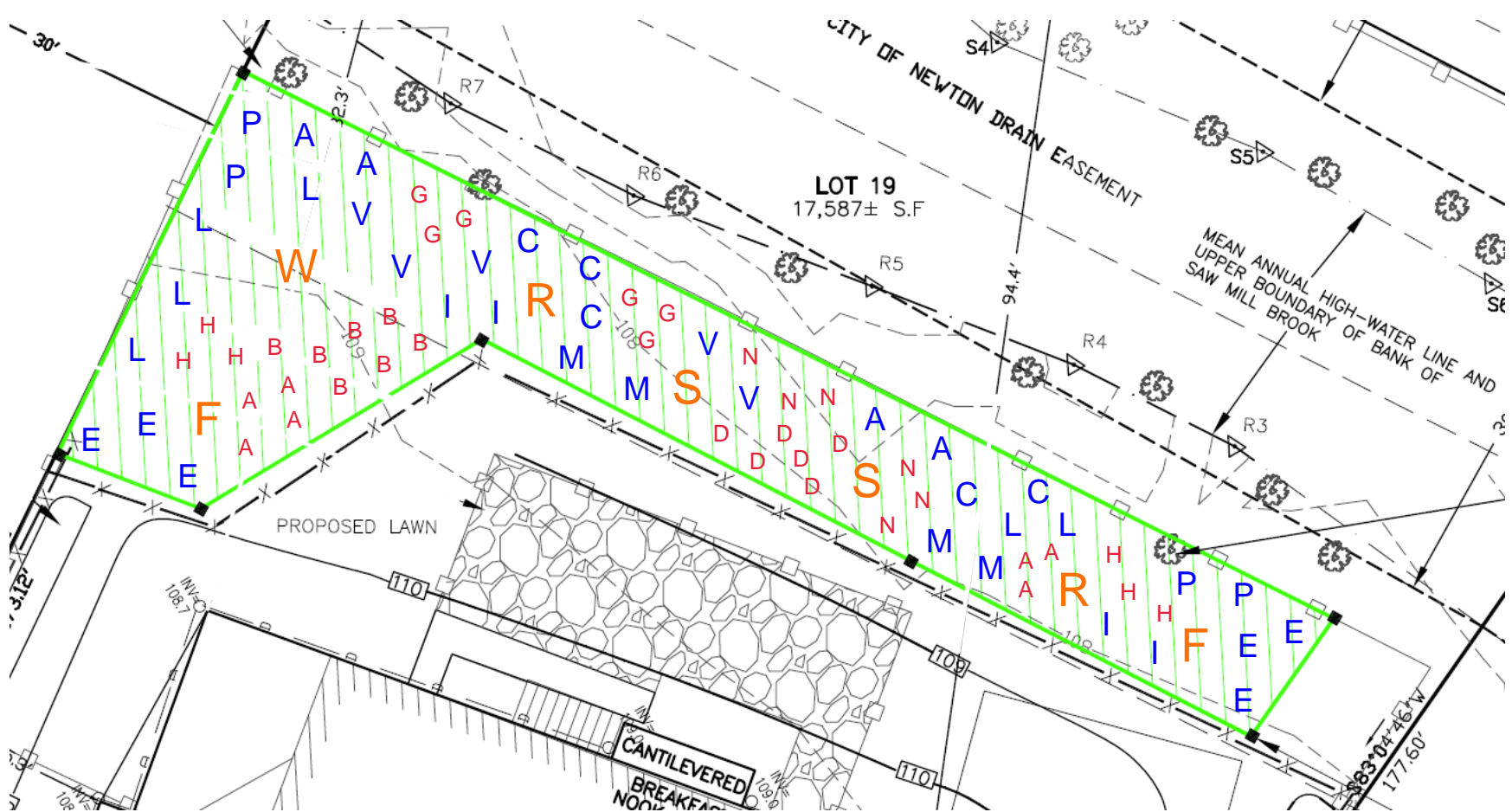
**PLANTING SCHEMATIC FOR
ENHANCEMENT PLANTING AREA
240 OLD FARM ROAD, NEWTON**

PREPARED BY ECOTEC, INC.
JUNE 9, 2021

Enhancement Planting Area (1,350± S.F.)

Stratum; Species; Size; Spacing	
Saplings ; 5-6' height; 15' on-center	7
W White Spruce (<i>Picea alba</i>)	1
F Flowering Dogwood (<i>Cornus florida</i>)	2
R Eastern Redbud (<i>Cercis canadensis</i>)	2
S Sweetbay Magnolia (<i>Magnolia virginiana</i>)	2
Shrubs (Evergreen and Deciduous); 3-4' height; 6' on-center	38
E Eastern Red Cedar (<i>Juniperus virginiana</i>)	6
L Mountain Laurel (<i>Kalmia latifolia</i>)	6
V American Witch-hazel (<i>Hamamelis virginiana</i>)	5
C Gray Dogwood (<i>Cornus racemosa</i>)	5
A American Cranberrybush (<i>Viburnum trilobum</i>)	4
M Black Chokeberry (<i>Aronia melanocarpa</i>)	4
P Sweet Pepper-bush (<i>Clethra alnifolia</i>)	4
I Inkberry (<i>Ilex glabra</i>)	4
Small Shrubs; Size Below; 6' on-center	38
B Bearberry (<i>Arctostaphylos uva-ursi</i> ; 6-12")	7
A Lowbush Blueberry (<i>Vaccinium angustifolium</i> ; 6-12")	7
G Groundseltree (<i>Baccharis halimifolia</i> ; 18-24")	6
N New Jersey Tea (<i>Ceanothus americanus</i> ; 18-24")	6
H Northern Bush Honeysuckle (<i>Diervilla lonicera</i> ; 18-24")	6
D Sand Cherry (<i>Prunus depressa</i> 18-24")	6

- Plants to be placed under direction of qualified wetland scientist.
- Substitutions are subject to approval by Staff.
- Plants must be natives; cultivars and varietals will not be accepted.
- After planting, the area will be mulched with a 3" thick layer of a 4:1 mixture of decomposed leaf compost and natural bark mulch.
- After planting the plants must be watered in well and watered periodically until they are established.



Note: The locations of the individual saplings, shrubs, and ground cover are shown for permitting and review purposes; the locations of the plantings in the field will be based on this plan subject to the discretion of the overseeing wetland scientist.