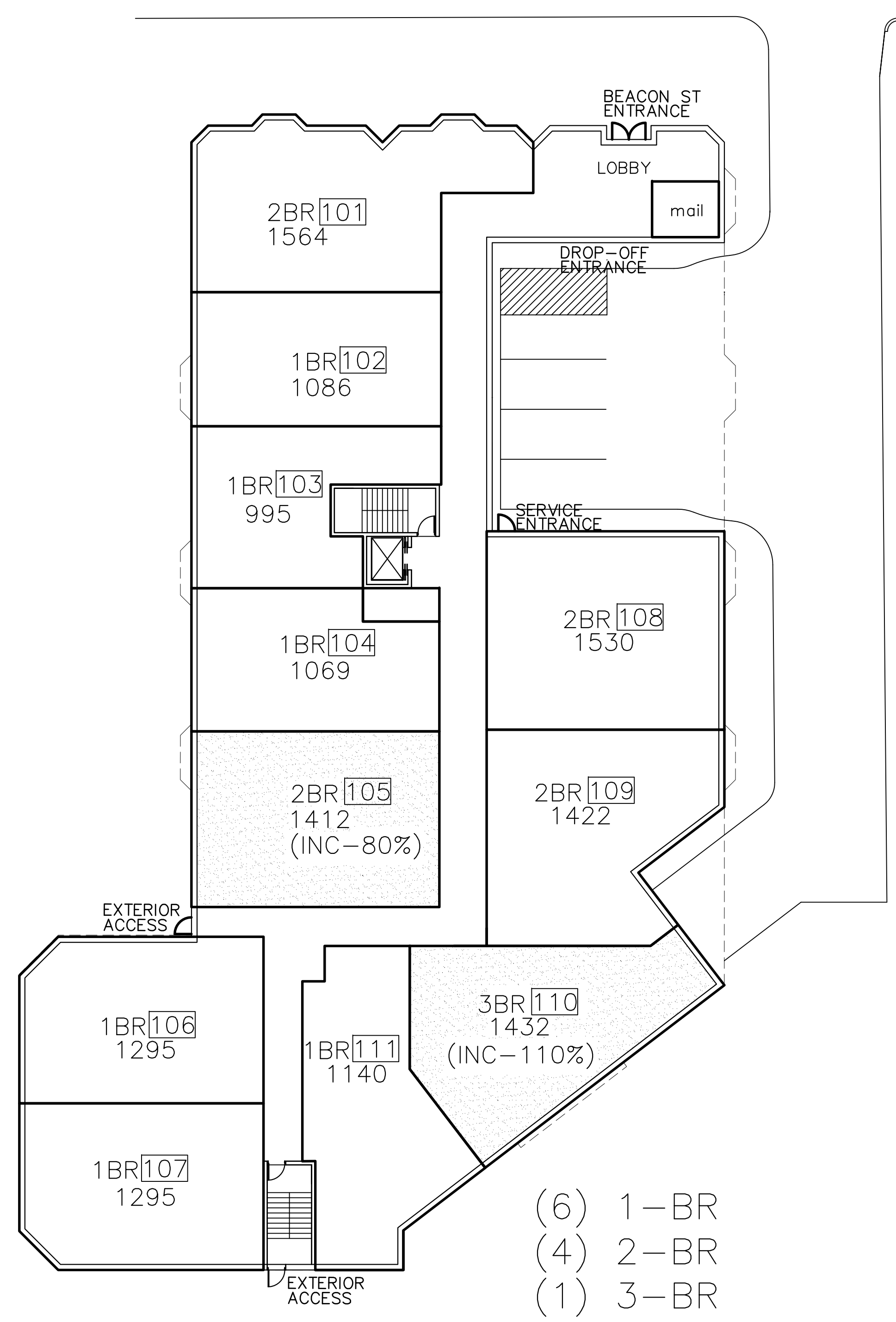


GARAGE (BASEMENT) PLAN 22,480 SF

1/16" = 1'-0"



FIRST FLOOR PLAN 17,725 SF

EFNArchitects llc retains the ownership of these documents. They are licensed for use only in accordance with the terms and conditions of the Owner/Architect Agreement. EFNArchitects llc retains all rights not expressly granted.

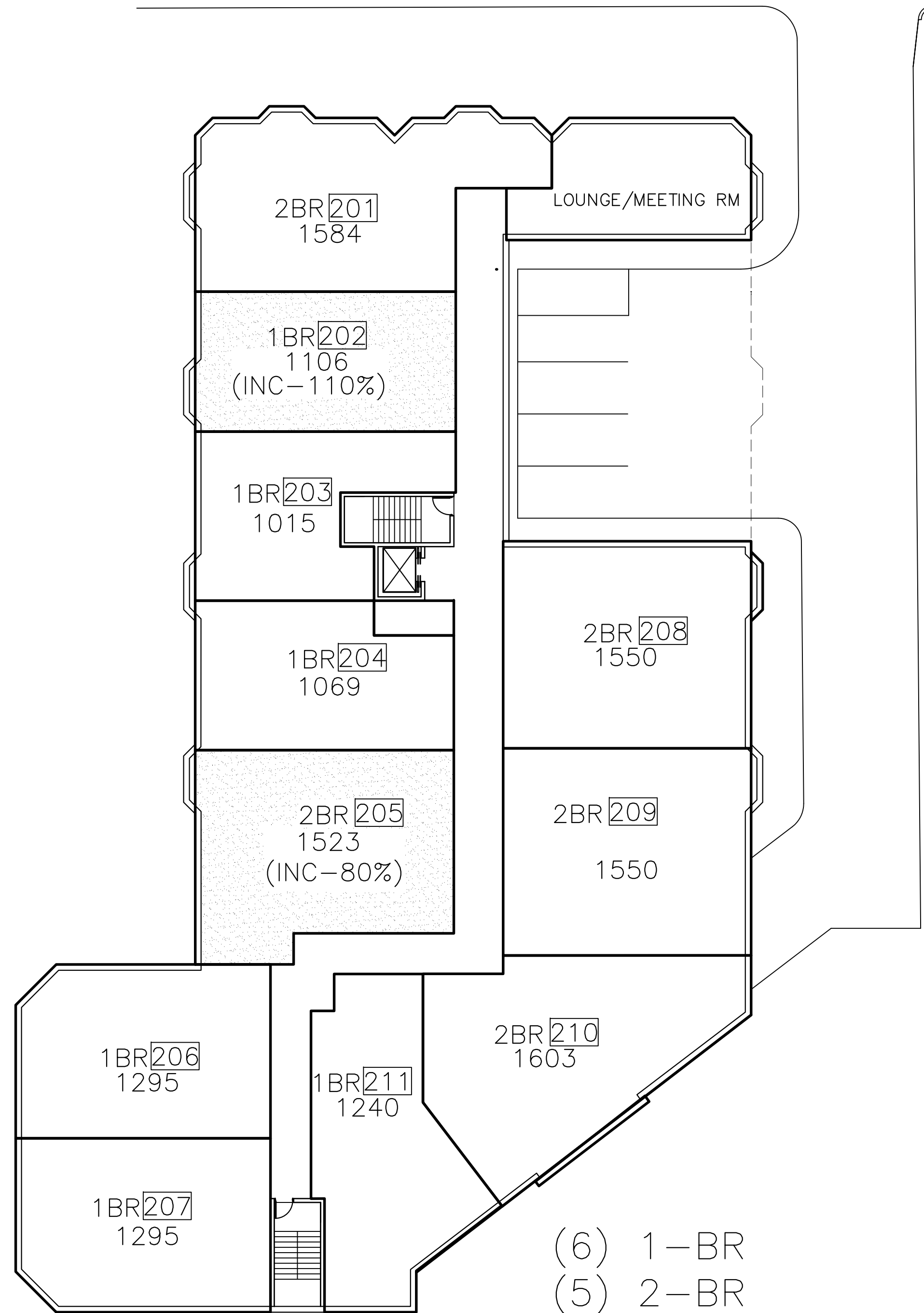
THE BEACON
1114 BEACON STREET
NEWTON, MA

NO	REVISIONS
06/18/21	REDESIGN

EFNArchitects
43 Broad Street B204 Hudson, MA 01749
781-455-9980 www.EFNArchitects.com

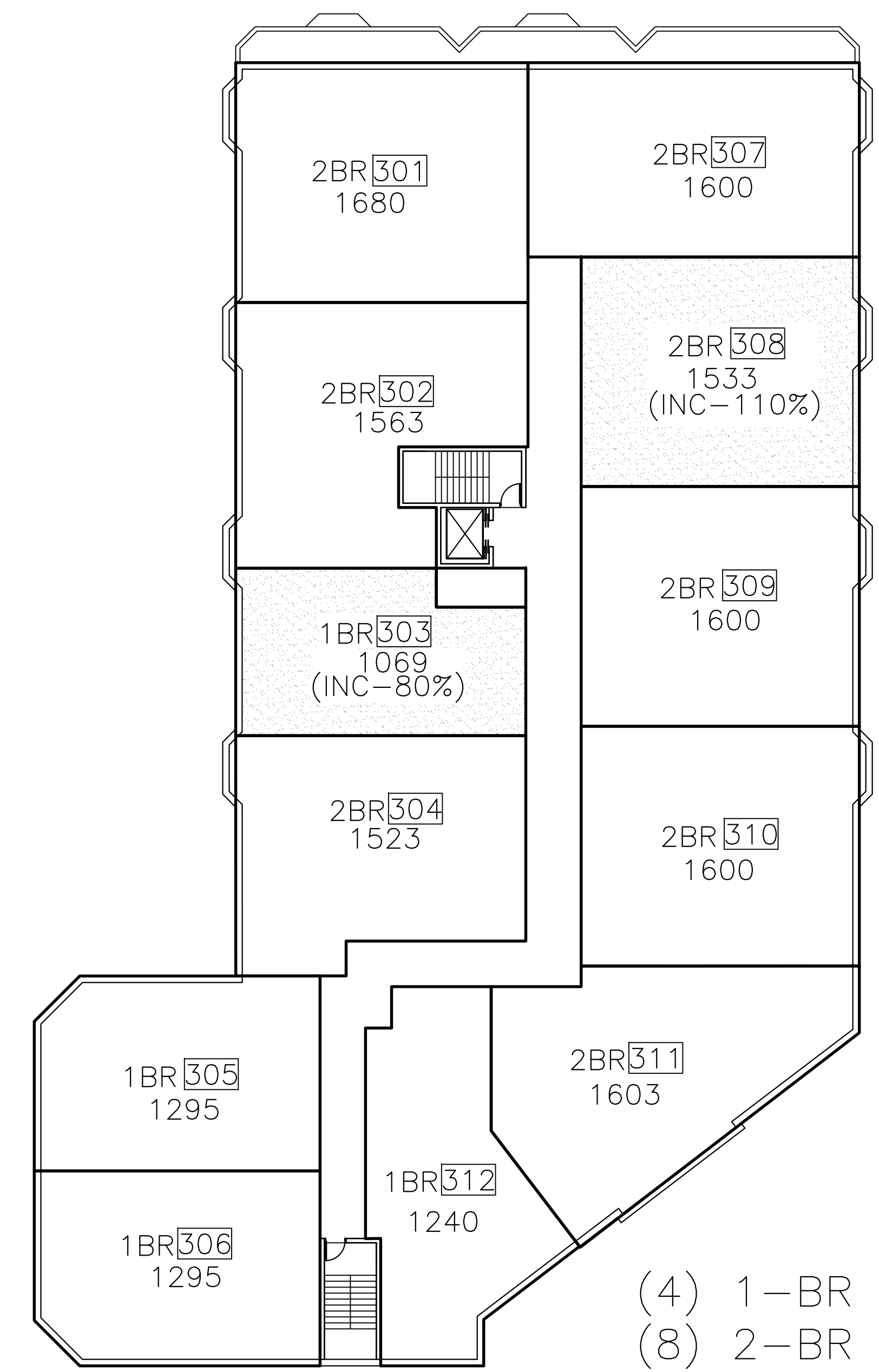
TITLE
**PRELIMINARY
GARAGE(BASEMENT)PLAN
FIRST FLOOR PLAN**

DRWN BY	EFNA
CHKD BY	EFNA
DATE:	10/23/20
SCALE:	AS NOTED
PROJECT NO:	0000



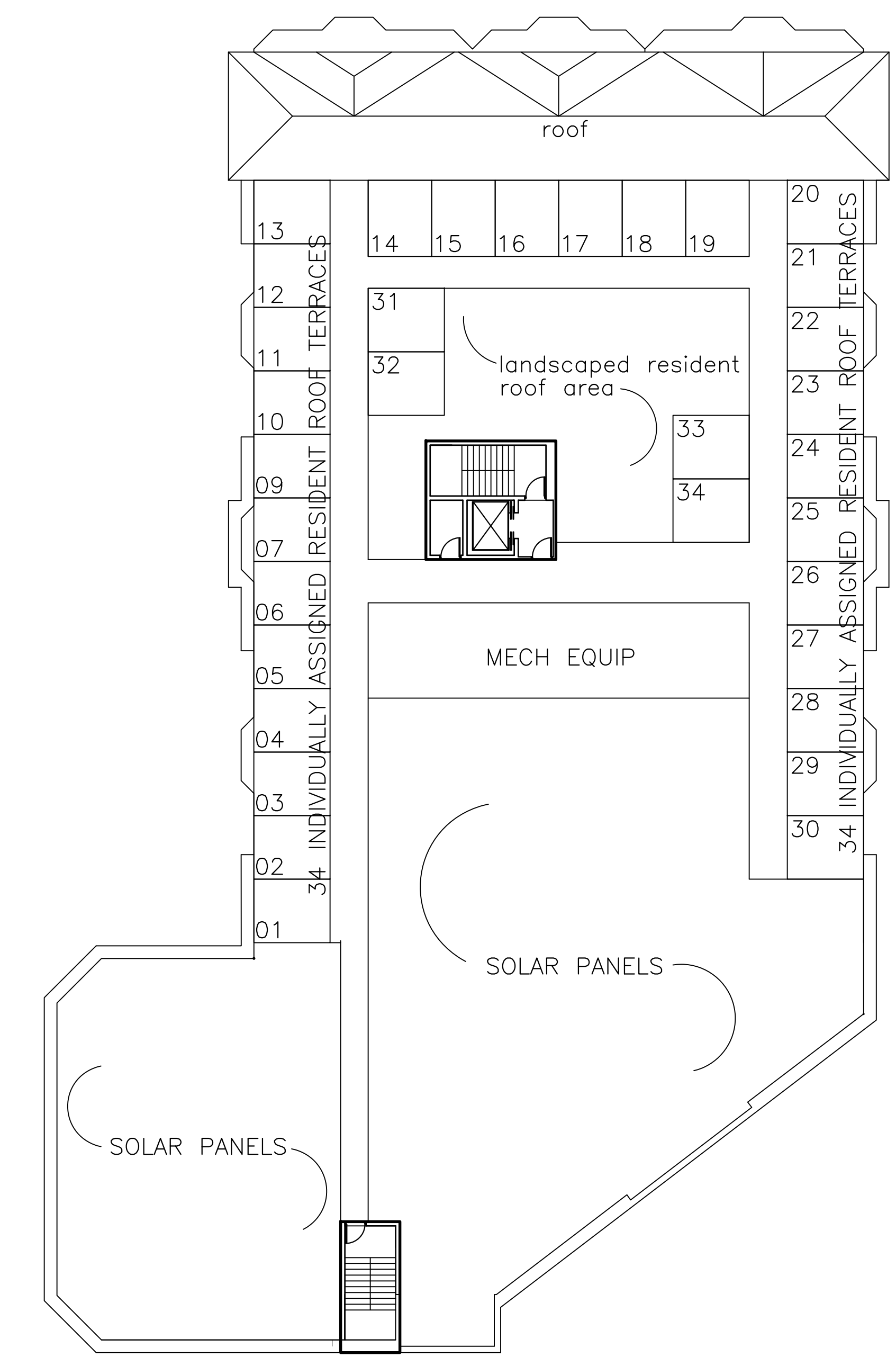
SECOND FLOOR 17,918 SF

1/16" = 1'-0"



THIRD FLOOR 19,568 SF

1/16" = 1'-0"



ROOF PLAN 575 SF

1/16" = 1'-0"

EFNArchitects LLC retains the ownership of these documents. They are licensed for use only in accordance with the terms and conditions of the Owner/Architect Agreement. EFNArchitects LLC retains all rights not expressly granted.

THE BEACON
1114 BEACON STREET
NEWTON, MA

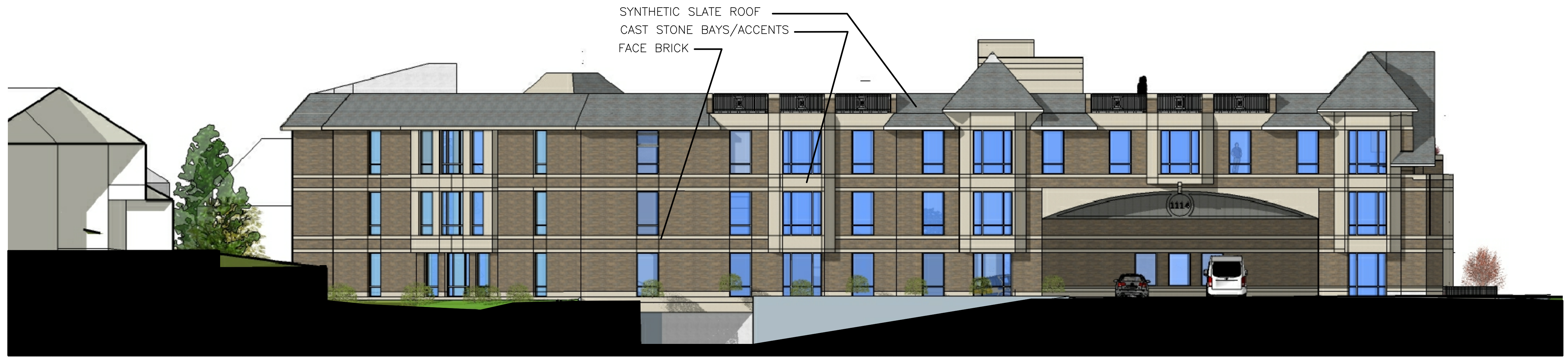
NO	REVISIONS
06/18/21	REDESIGN

EFNArchitects

43 Broad Street B204 Hudson, MA 01749
781-455-9980 www.EFNArchitects.com

TITLE
PRELIMINARY FLOOR PLANS

DRWN BY	EFNA
CHKD BY	EFNA
DATE:	10/23/20
SCALE:	AS NOTED
PROJECT NO:	0000



EAST ELEVATION

3/32" = 1'-0"



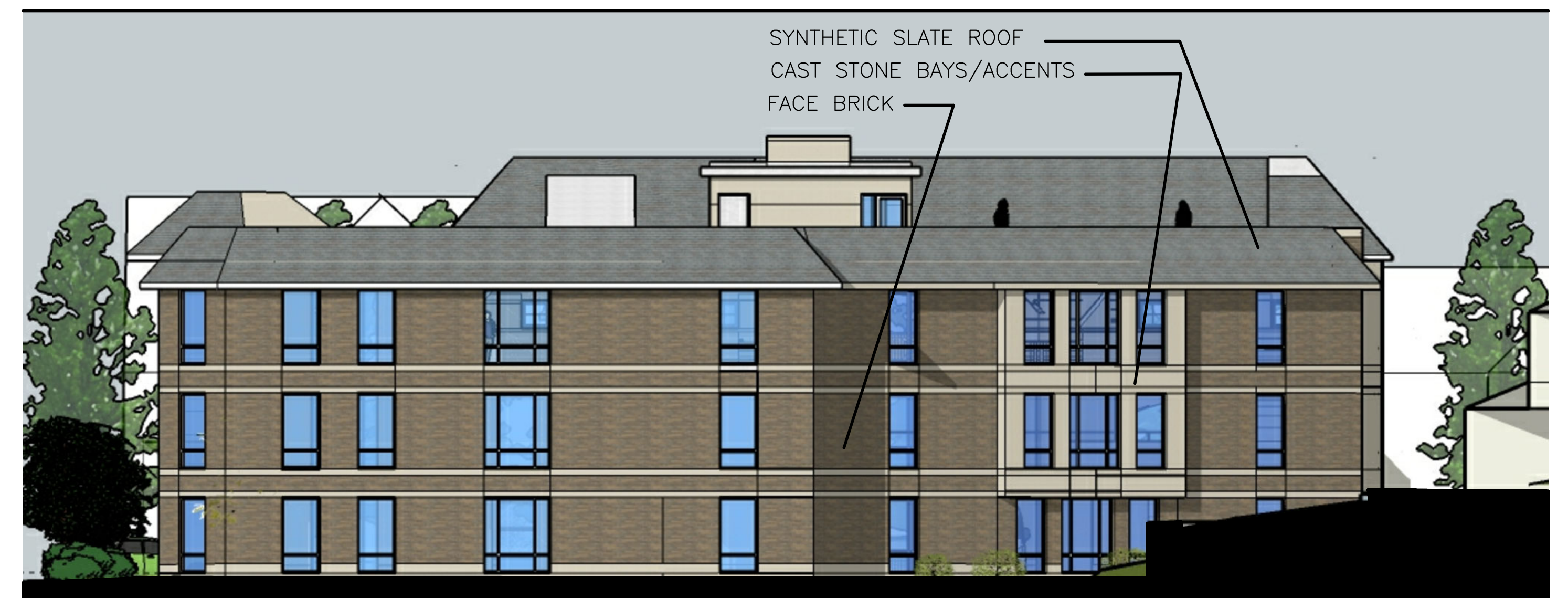
WEST ELEVATION

3/32" = 1'-0"



NORTH ELEVATION - BEACON STREET

3/32" = 1'-0"



SOUTH ELEVATION

3/32" = 1'-0"

EFNArchitects LLC retains the ownership of these documents. They are licensed for use only in accordance with the terms and conditions of the Owner/Architect Agreement. EFNArchitects LLC retains all rights not expressly granted.

THE BEACON
1114 BEACON STREET
NEWTON, MA

NO. REVISIONS

06/18/21 REDESIGN

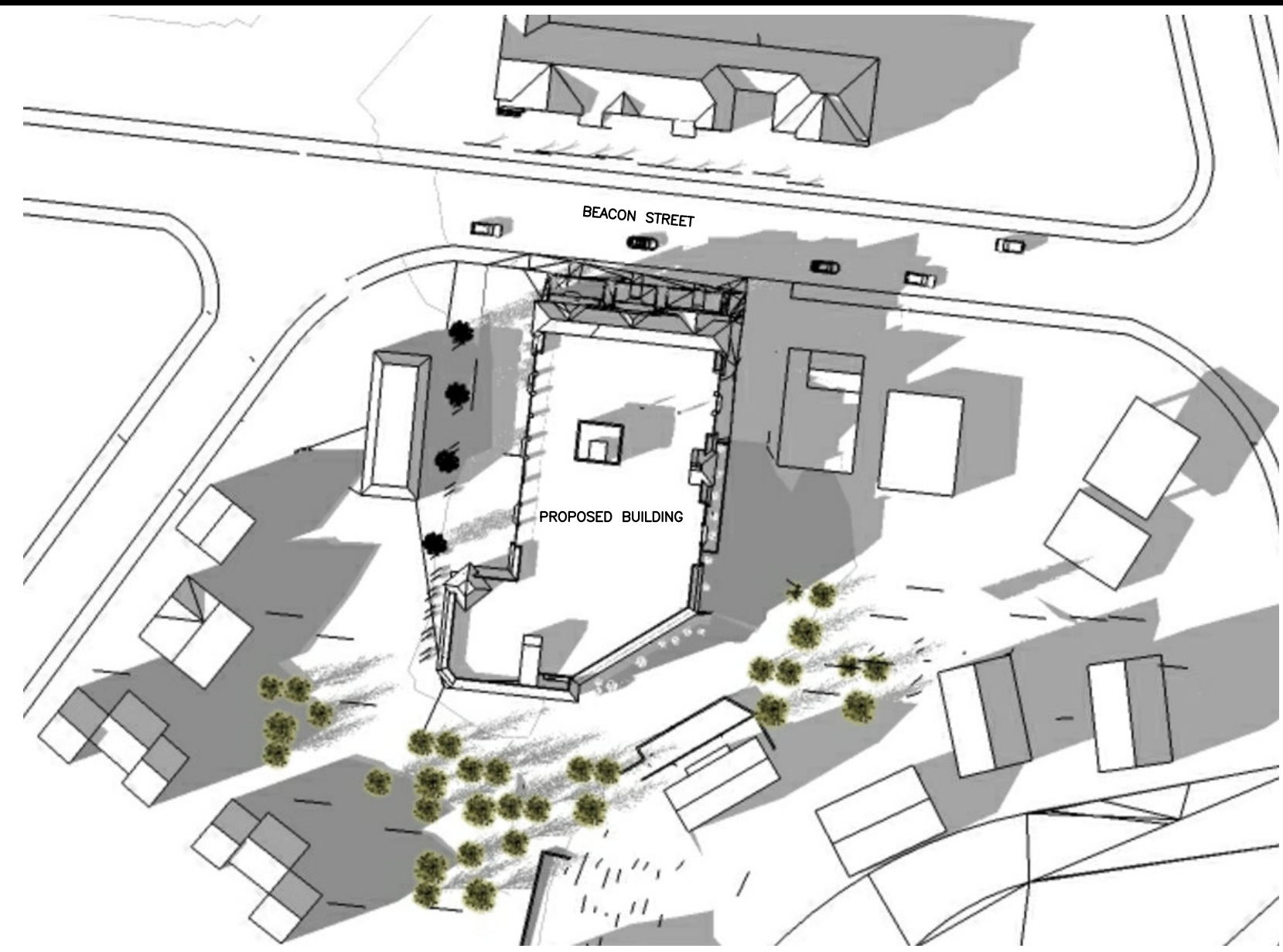
EFNArchitects

43 Broad Street B204 Hudson, MA 01749
781-455-9980 www.EFNArchitects.com

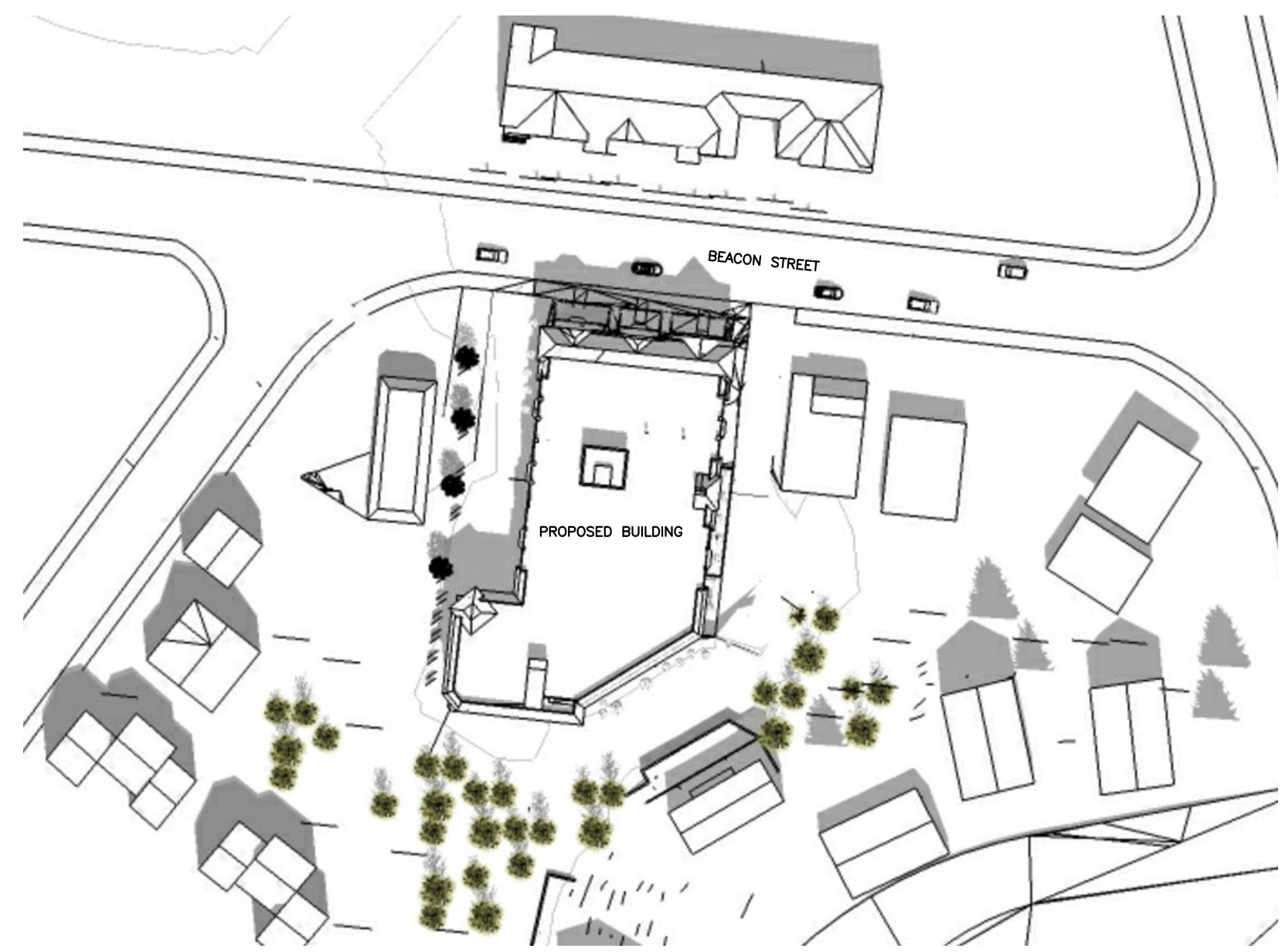
TITLE

BUILDING ELEVATIONS

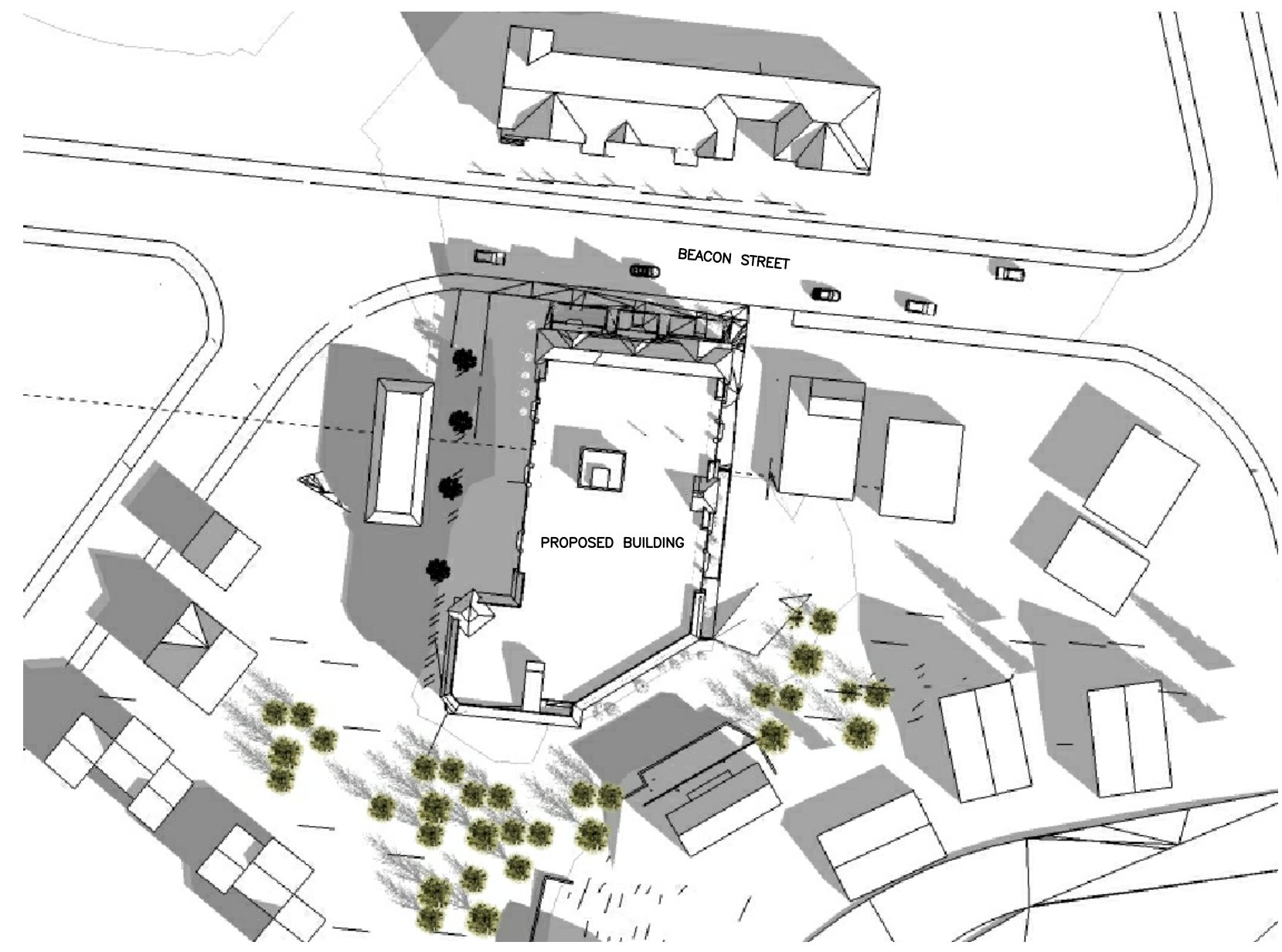
DRWN BY	EFNA
CHKD BY	EFNA
DATE	10/23/20
SCALE	AS NOTED
PROJECT NO.	0000



4 PM

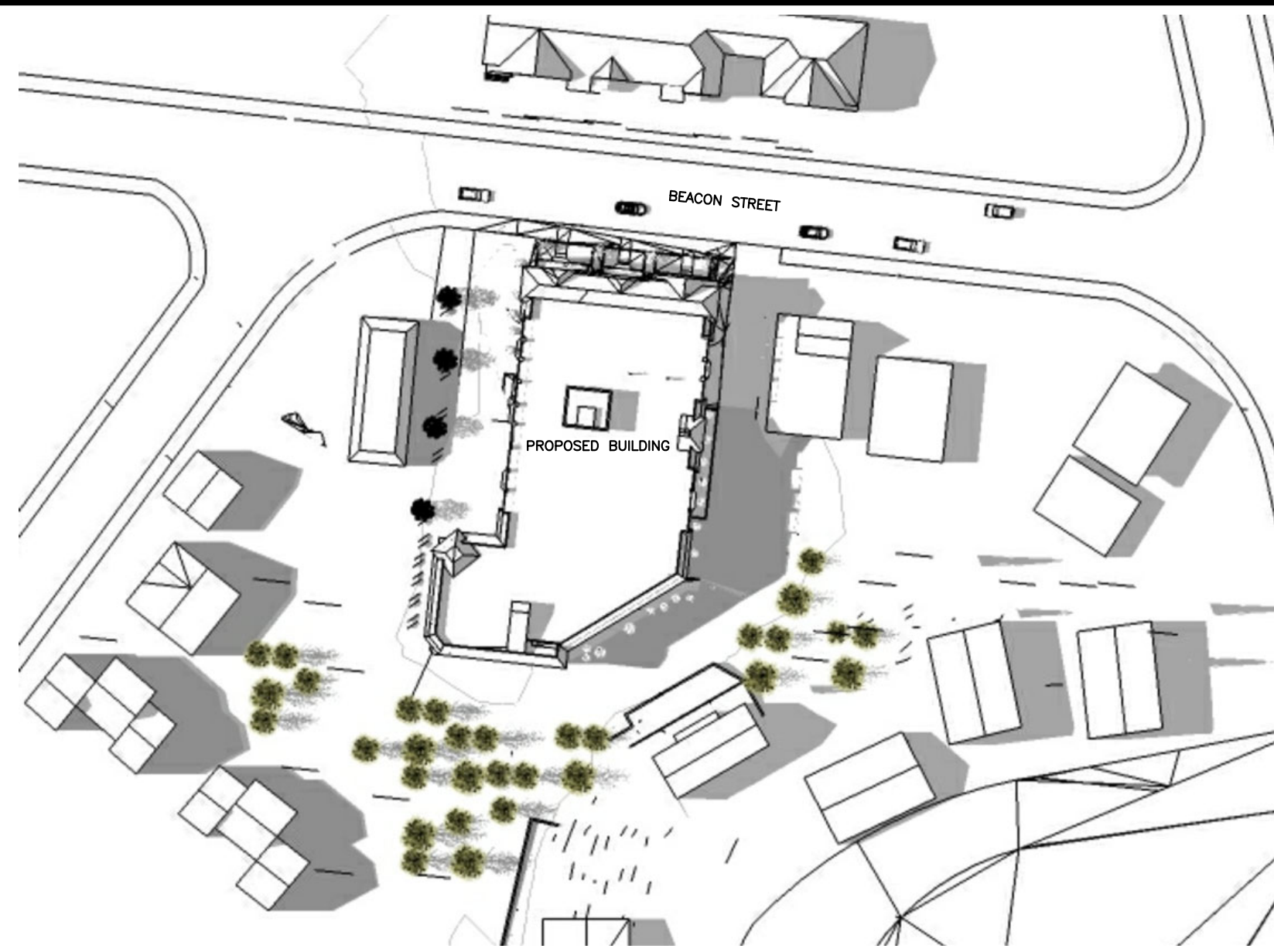


12 PM

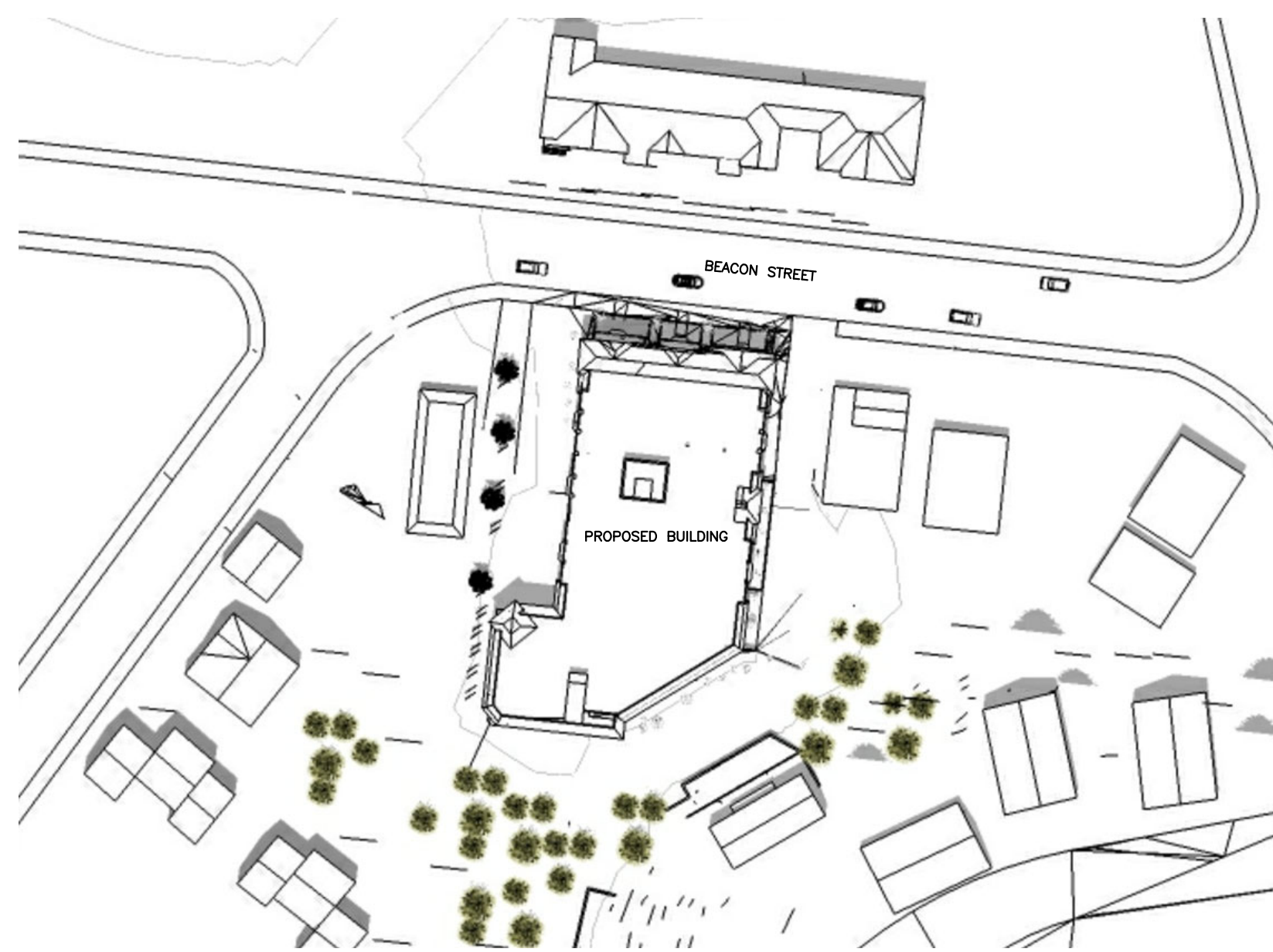


MARCH 15

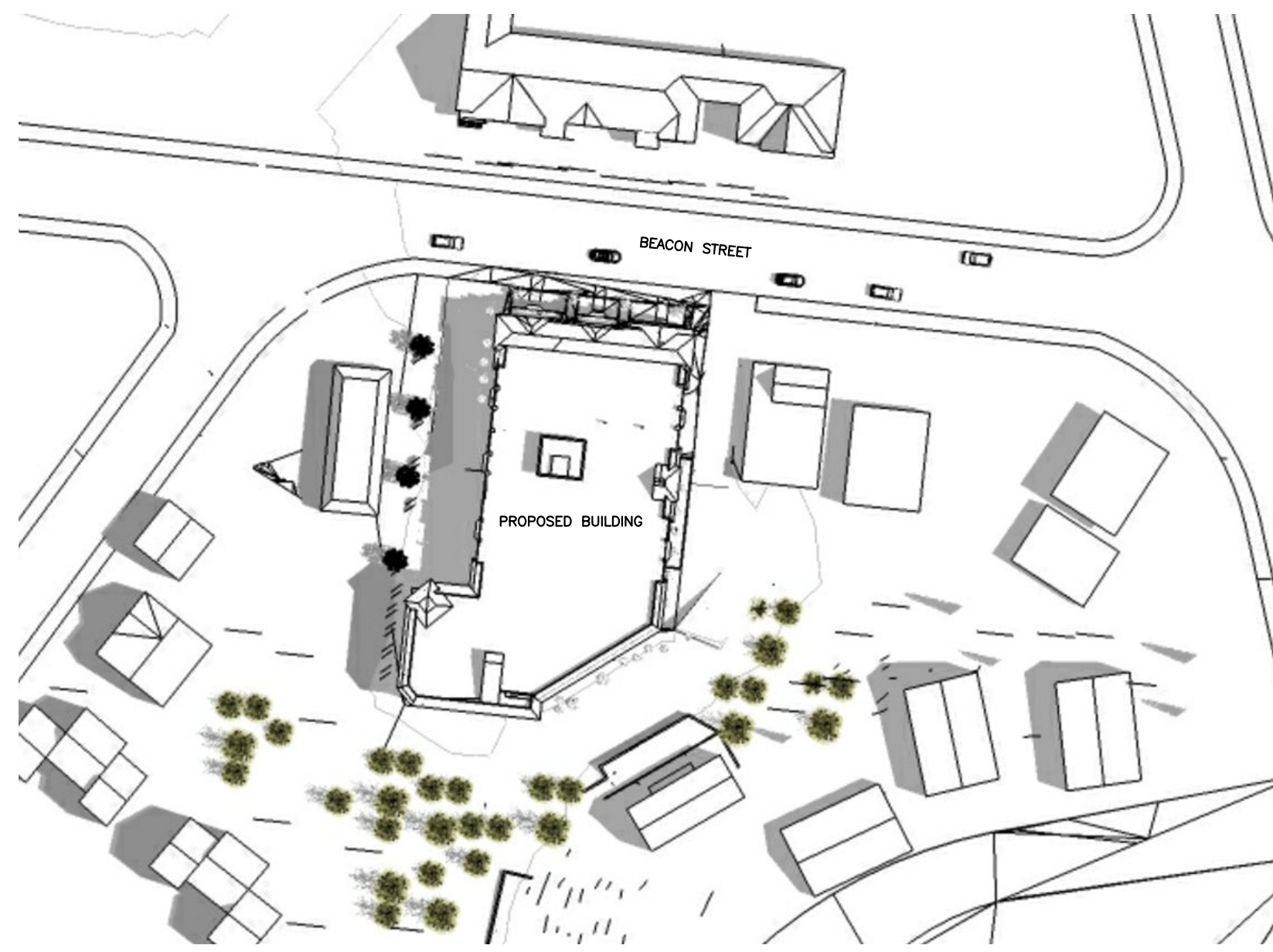
9AM



4 PM



12 PM

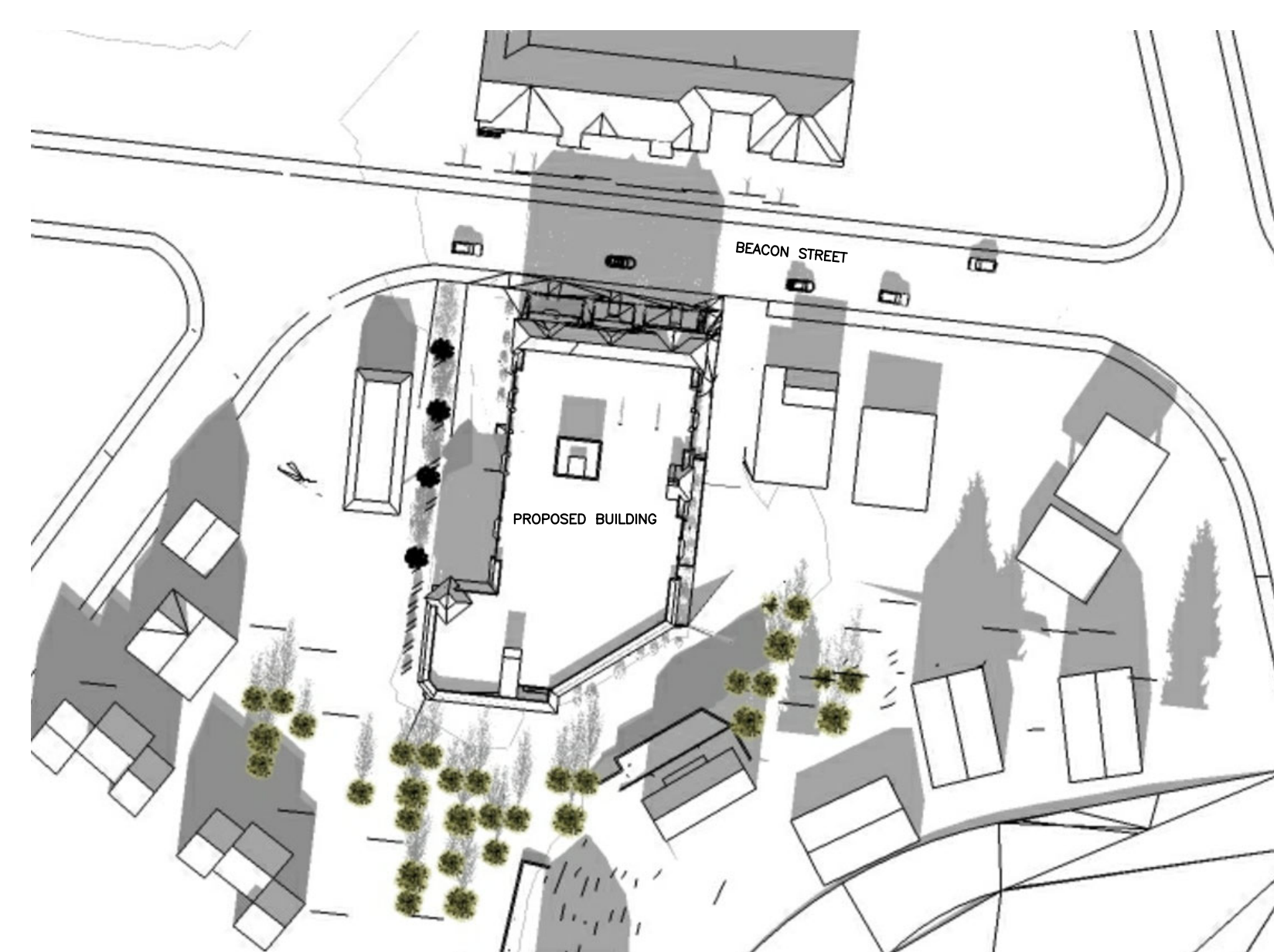


JULY 15

9AM



4 PM



12 PM



DECEMBER 15

9AM

EFNArchitects LLC retains the ownership of these documents. They are licensed for use only in accordance with the terms and conditions of the Owner/Architect Agreement. EFNArchitects LLC retains all rights not expressly granted.

THE BEACON
1114 BEACON STREET
NEWTON, MA

NO.	REVISIONS
06/18/21	REDESIGN

EFNAarchitects

43 Broad Street B204 Hudson, MA 01749
781-455-9980 www.EFNArchitects.com

TITLE

SHADOW STUDY

DRWN BY	EFNA
CHKD BY	EFNA
DATE	10/23/20
SCALE	AS NOTED
PROJECT NO.	0000



STREET VIEW – BEACON STREET (NW)



STREET VIEW – BEACON STREET (NE)

EFNArchitects LLC retains the ownership of these documents. They are licensed for use only in accordance with the terms and conditions of the Owner/Architect Agreement. EFNArchitects LLC retains all rights not expressly granted.

THE BEACON
1114 BEACON STREET
NEWTON, MA

NO.	REVISIONS
06/18/21	REDESIGN

EFNArchitects
 43 Broad Street B204 · Hudson, MA 01749
 781-455-9980 www.EFNArchitects.com

TITLE

RENDERINGS

DRWN BY	EFNA
CHKD BY	EFNA
DATE	10/23/20
SCALE	AS NOTED
PROJECT NO.	0000