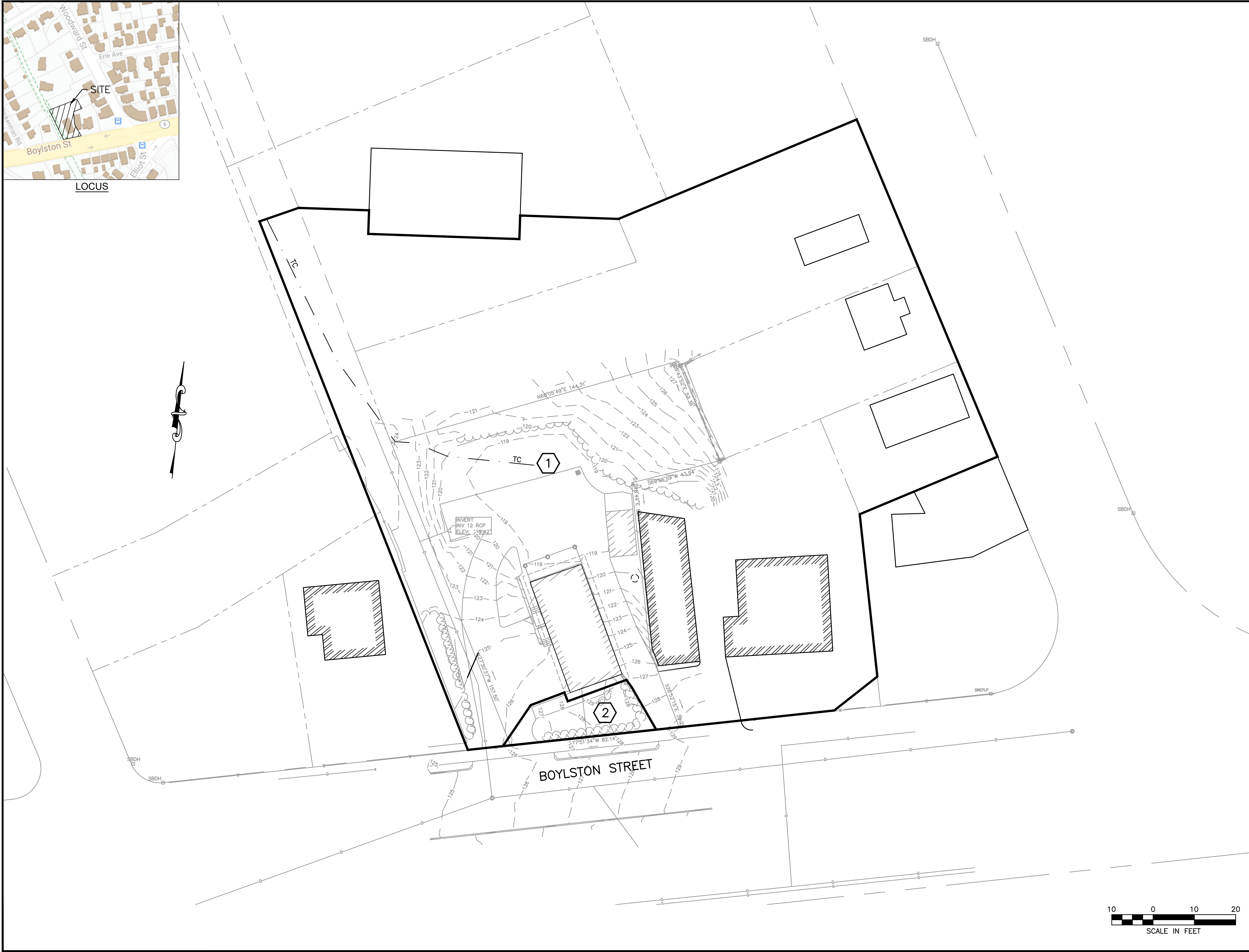


LOCUS



HOWARD STEIN HUDSON
 114 Turnpike Road, Suite 2C
 Chelmsford, MA 01824
 www.hshassoc.com

PREPARED FOR:
 1021 BOYLSTON STREET LLC
 1021 BOYLSTON STREET
 NEWTON, MA 02461

**PROPOSED DRIVE THROUGH
 REDEVELOPMENT**
 1021 BOYLSTON STREET
 NEWTON, MA 02461
 MIDDLESEX COUNTY

REVISIONS:

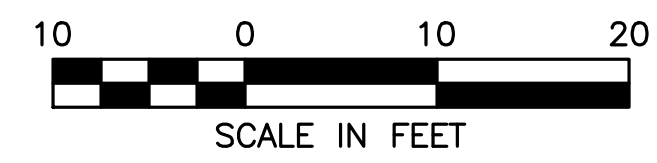
NO	BY	DATE	DESCRIPTION
1	MB	5/14/21	REV. SITE PLANS

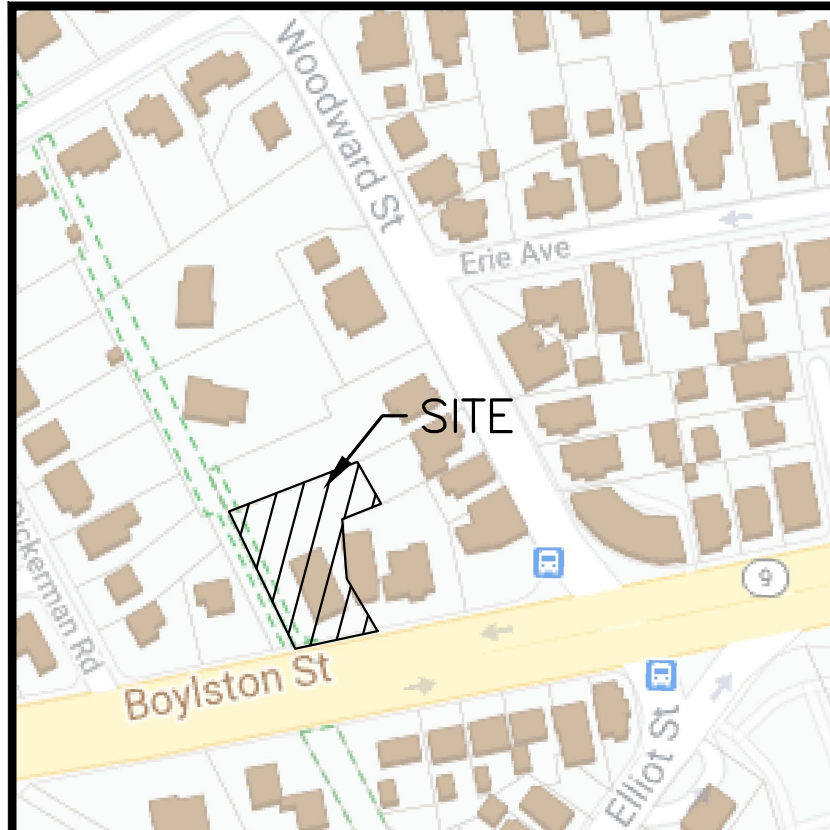
SITE PLAN

**PRE-DEVELOPMENT
 WATERSHED MAP**

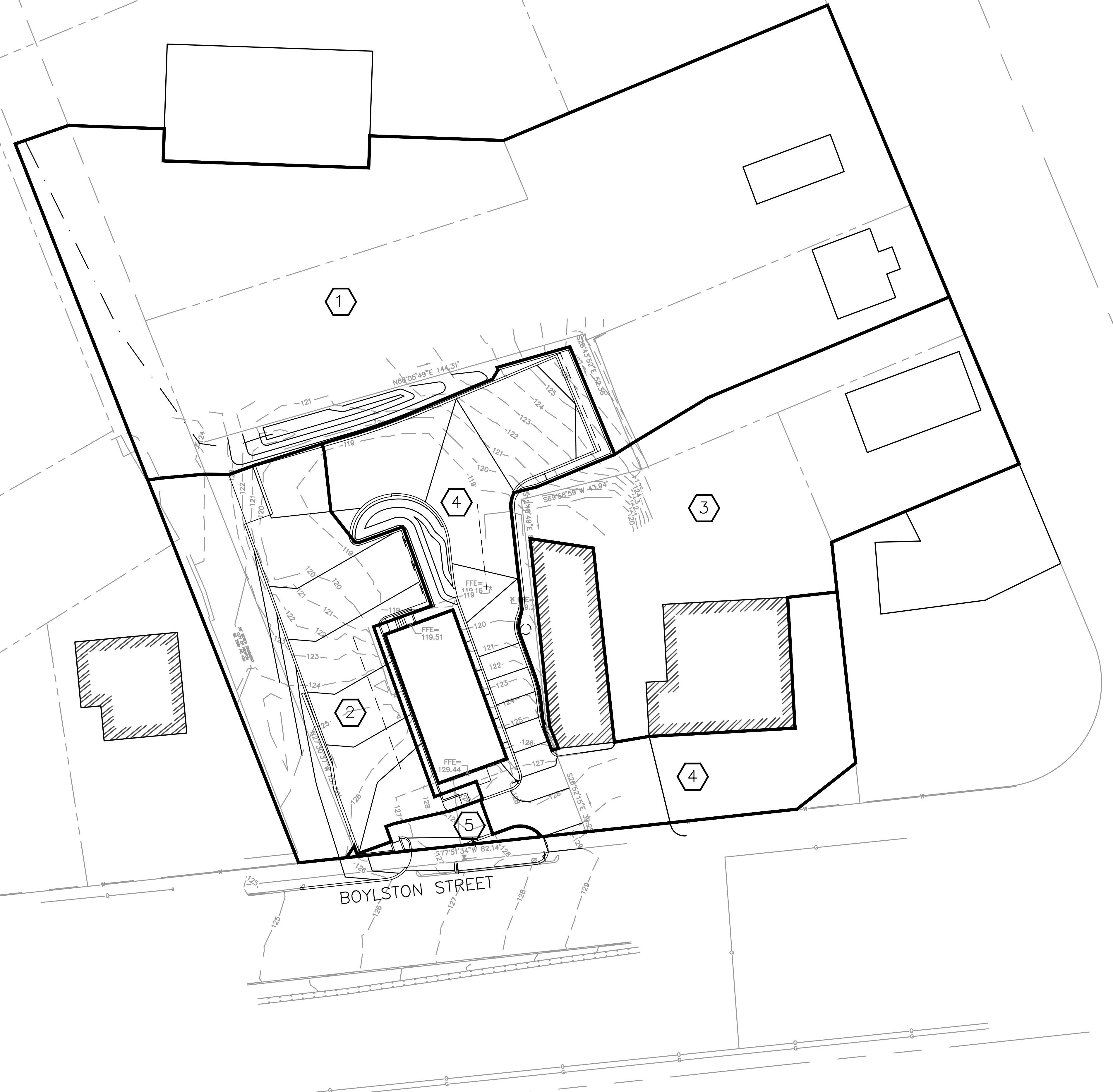
DATE:	03/19/2021
PROJECT NUMBER:	19237
DESIGNED BY:	KL
DRAWN BY:	KL
CHECKED BY:	KE

C.14

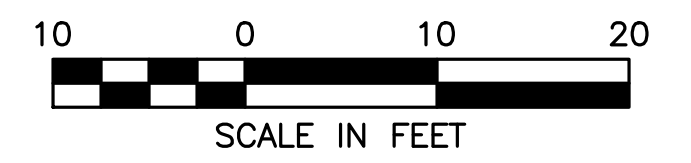




LOCUS



BOYLSTON STREET



HOWARD STEIN HUDSON
 114 Turnpike Road, Suite 2C
 Chelmsford, MA 01824
 www.hshassoc.com

PREPARED FOR:
 1021 BOYLSTON STREET LLC
 1021 BOYLSTON STREET
 NEWTON, MA 02461

**PROPOSED DRIVE THROUGH
 REDEVELOPMENT**
 1021 BOYLSTON STREET
 NEWTON, MA 02461
 MIDDLESEX COUNTY

REVISIONS:

NO	BY	DATE	DESCRIPTION
1	MB	5/14/21	REV. SITE PLANS

SITE PLAN

**POST-DEVELOPMENT
 WATERSHED MAP**

DATE:	03/19/2021
PROJECT NUMBER:	19237
DESIGNED BY:	KL
DRAWN BY:	KL
CHECKED BY:	KE

C.15