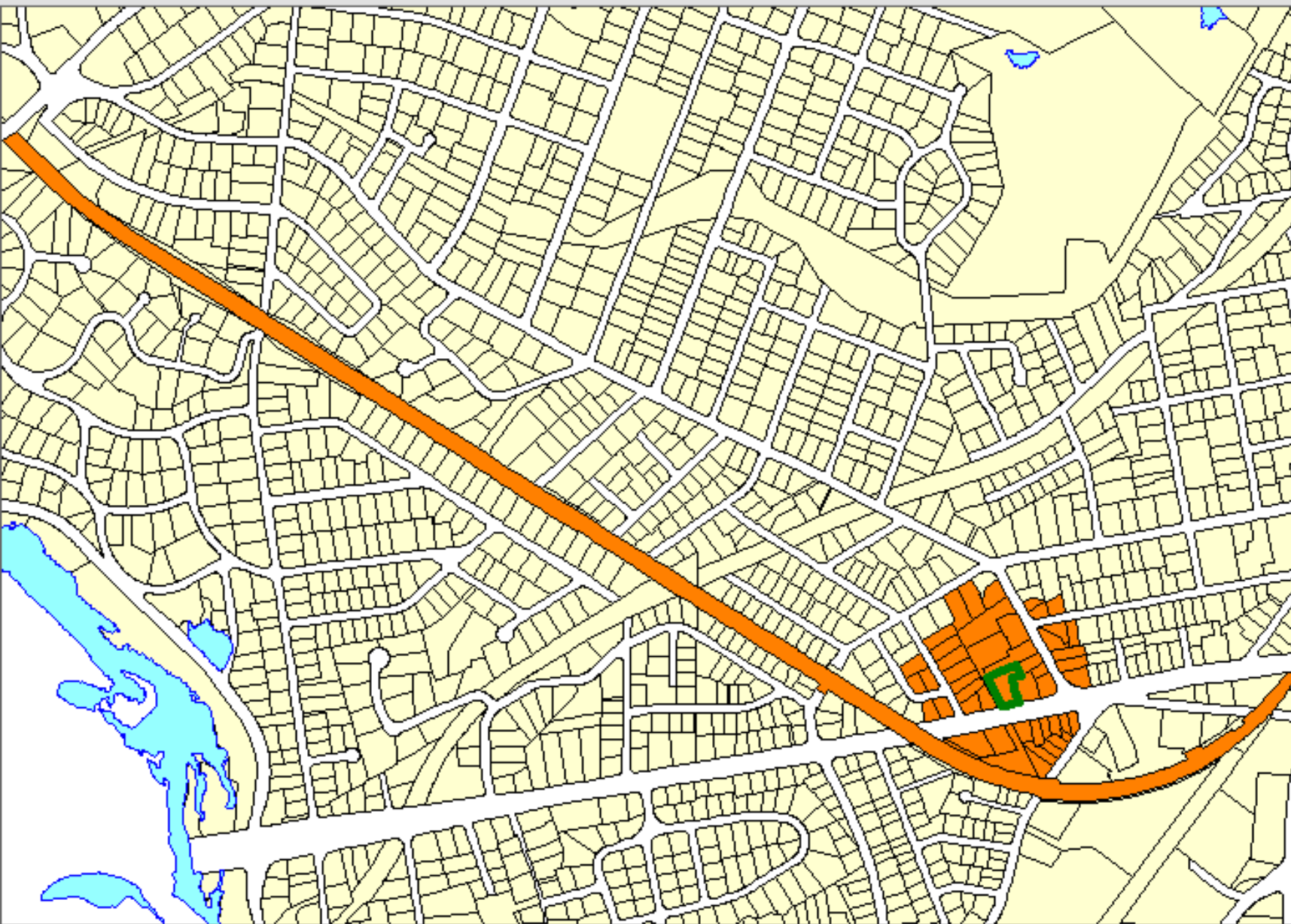


NEWTON GIS DATA



The information on this map is from the Newton Geographic Information System (GIS). The City of Newton cannot guarantee the accuracy of this information. Each user is responsible for determining the data's suitability for its intended purpose.

City departments will not approve applications based solely on GIS data. City staff correct errors as they are identified.

-  Buildings
-  Property Lines
-  Lakes & Rivers
-  Easements

Property Location:

1021 BOYLSTON ST

Property ID:

54041 0014

Land Use: Lot Size:

325

16550 Sq. Ft.

1 inch = Approximately 765 Feet

MAP DATE: July 01, 2021

