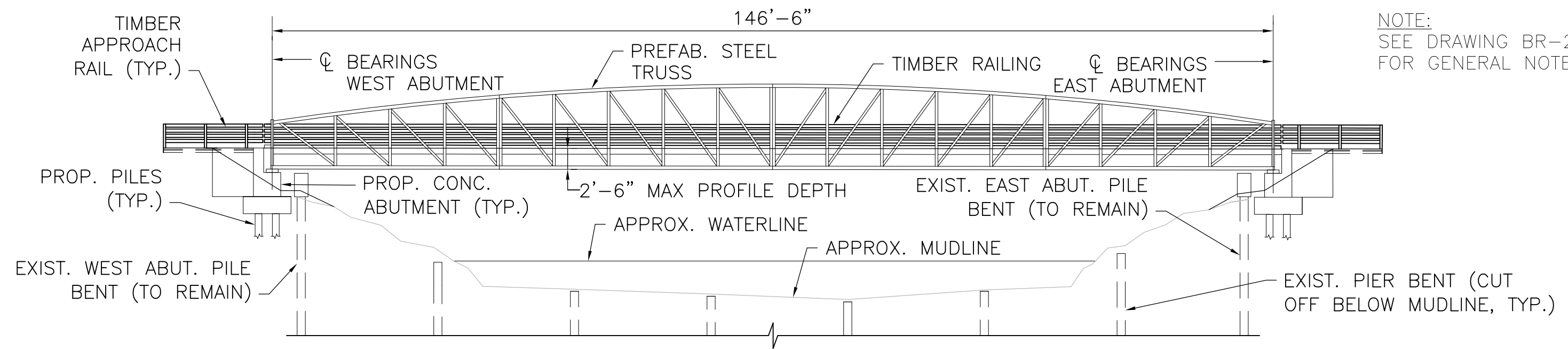


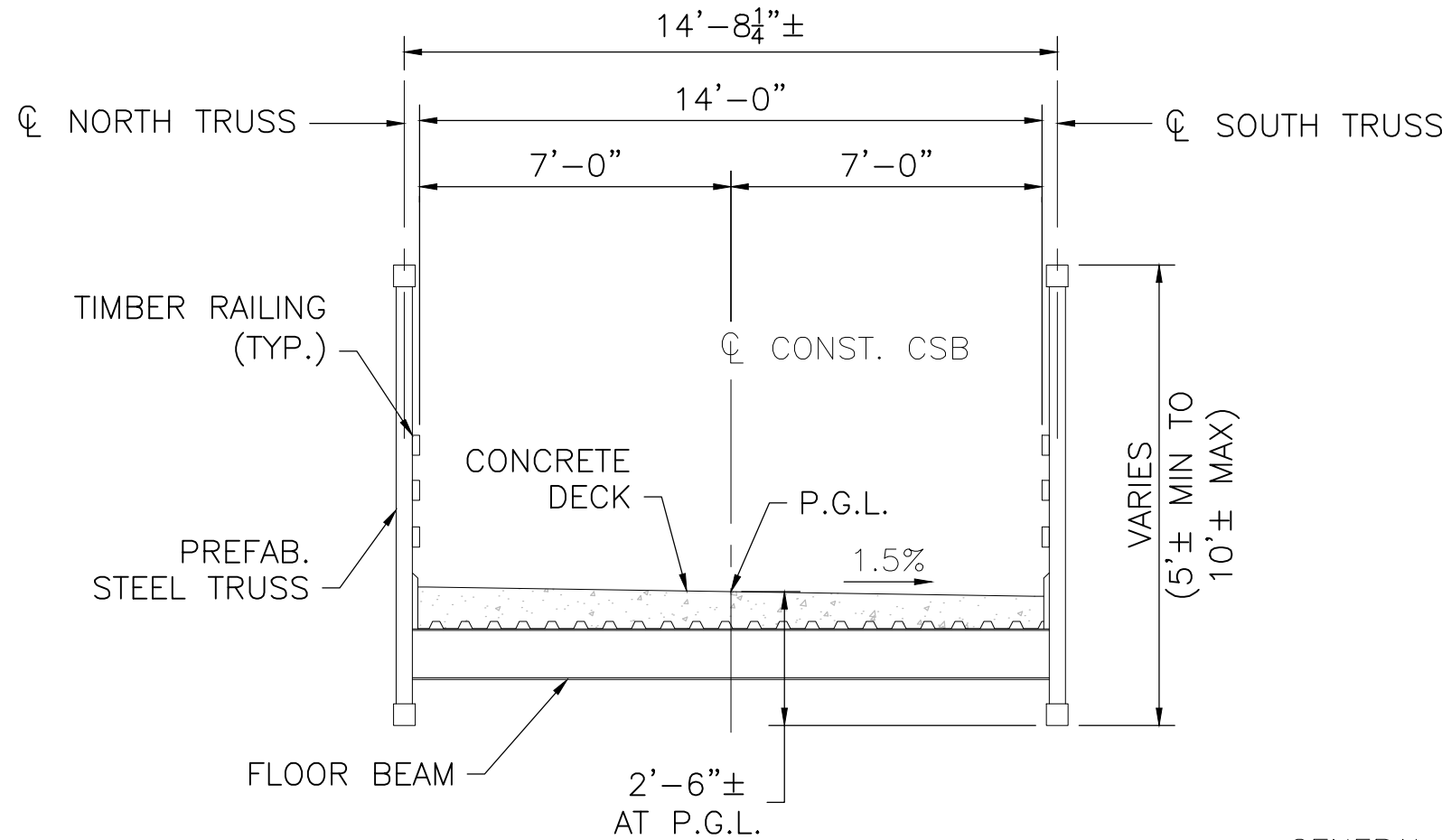
GENERAL PLAN
SCALE: 1" = 15'



ELEVATION
SCALE: 1" = 15'

NOTE:
SEE DRAWING BR-2
FOR GENERAL NOTES.



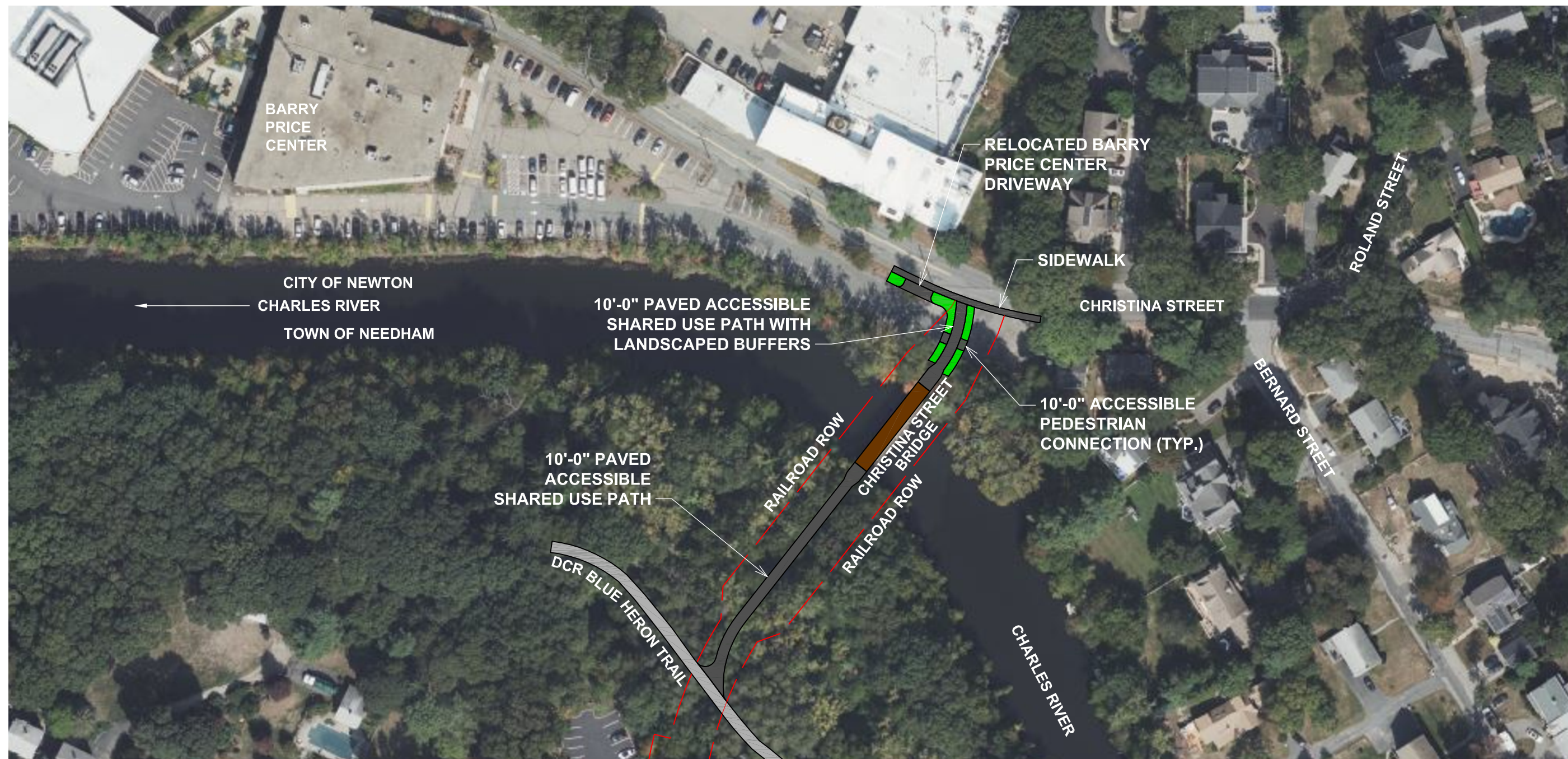
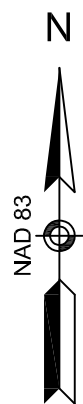


TYPICAL SECTION
SCALE: 1" = 4'

GENERAL NOTES:

1. THIS PLAN SET IS INTENDED TO CONVEY ONLY THE GENERAL STRUCTURE TYPE AND LAYOUT OF THE PREFERRED BRIDGE REPLACEMENT CONCEPT.
2. SOME SPECIFIC MATERIALS, FINISHES, AND DETAILS ARE LABELED HEREIN TO SHOW POSSIBLE OPTIONS THAT ARE COMPATIBLE FOR THIS CONCEPT. HOWEVER, THESE SPECIFICS ARE SUBJECT TO CHANGE DURING THE NEXT DESIGN PHASE OF THIS PROJECT.





APPROACH CONCEPT
SCALE: 1" = 100'

