



## Public Facilities Committee Agenda

### City of Newton In City Council

Wednesday, July 21, 2021

The Public Facilities Committee will hold this meeting as a virtual meeting on Wednesday, July 21, 2021 at 7:00 pm. To view this meeting using Zoom use this link: <https://us02web.zoom.us/j/83337284920> or call 1-646-558-8656 and use the following Meeting ID: 833 3728 4920

#### Item Scheduled for Discussion:

**#290-21 Request for public way improvements at Pettee Square**

HER HONOR THE MAYOR requesting approval of the public way improvements at Pettee Square at the intersection of Chestnut Street and Oak Street as part of the Pettee Square streetscape enhancements in accordance with City Ordinance 26-51. Intersection improvements include pedestrian, bicycle and vehicular safety in keeping with the city's complete streets initiative.

#### Referred to Public Facilities and Finance Committees

**#282-21 Appropriate \$325,900 for the purchase of one new Volvo yard front end loader**

HER HONOR THE MAYOR requesting authorization to appropriate and expend the sum of three hundred twenty-five thousand nine hundred dollars (\$325,900) and authorize a general obligation borrowing of an equal amount for the purchase of one new Volvo L120H Volvo 4.50 yard front end loader.

#### Referred to Public Facilities and Finance Committees

**#283-21 Appropriate \$725,000 for the purchase of two 10-wheel swap loader trucks**

HER HONOR THE MAYOR requesting authorization to appropriate and expend the sum of seven hundred twenty-five thousand dollars (\$725,000) and authorize a general obligation borrowing of an equal amount for the purchase of two 10-wheel swap loader trucks.

---

The location of this meeting is accessible and reasonable accommodations will be provided to persons with disabilities who require assistance. If you need a reasonable accommodation, please contact the city of Newton's ADA Coordinator, Jini Fairley, at least two business days in advance of the meeting: [jfairley@newtonma.gov](mailto:jfairley@newtonma.gov) or (617) 796-1253. The city's TTY/TDD direct line is: 617-796-1089. For the Telecommunications Relay Service (TRS), please dial 711.

**Referred to Public Facilities and Finance Committees**

**#284-21**

**Authorization to borrow up to \$20,837,000 from the MWRA**

HER HONOR THE MAYOR requesting authorization to borrow up to twenty million eight hundred thirty-seven thousand dollars (\$20,837,000) from the Massachusetts Water Resources Authority (MWRA) Local Water System Assistance Program Phase 3 as an interest free ten-year loan to be paid in equal, annual installments.

**Respectfully submitted,**

**Alison M. Leary, Chair**



Ruthanne Fuller  
Mayor

City of Newton, Massachusetts  
Office of the Mayor

290-21

Telephone  
(617) 796-1100  
Fax  
(617) 796-1113  
TDD/TTY  
(617) 796-1089  
Email

rfuller@newtonma.gov

Honorable City Council  
Newton City Hall  
1000 Commonwealth Avenue  
Newton, MA 02459

Honorable City Councilors:

I respectfully submit this docket item to this Honorable Council requesting public way improvements at Pettee Square in Newton Upper Falls in accordance with City Ordinance 26-51.

The Department of Public Works is proposing a series of intersection improvements at the Chestnut Street at Oak Street intersection as part of the Pettee Square streetscape enhancements. An important design goal is to improve pedestrian, bicycle and vehicular safety, in keeping with the city's complete streets initiative.

The design project is being funded by a Mass Works reimbursable grant, which the City Council approved as part of Docket Item #238-20 on May 4, 2020. The construction is proposed to be funded by a continuation of the Mass Works reimbursable grant.

The preferred preliminary design plans of the proposed intersection improvement are attached. Final design plans are being developed. The construction of this intersection improvement is scheduled for the 2022 construction seasons, pending a successful grant application from Mass Works. Key attributes include a raised intersection, stamped sidewalks, and ADA pedestrian curb ramps.

The project has been brought before the Newton Upper Falls Historic District Commission on three occasions. On July 8, 2021, the Commission voted to approve the Certificate of Appropriateness for the project. City staff also presented the project to the Newton Upper Falls Area Council to gather their feedback and comments.

Please see the attached memo and designs from Commissioner of Public Works Jim McGonagle for additional information.

Thank you for your consideration of this matter.

Sincerely,

Mayor Ruthanne Fuller

RECEIVED  
2021 JUL -9 PM 1:26  
CITY CLERK  
NEWTON, MA. 02459

City of Newton  
Ruthanne Fuller  
Mayor

DEPARTMENT OF PUBLIC WORKS  
OFFICE OF THE COMMISSIONER  
1000 Commonwealth Avenue  
Newton Centre, MA 02459-1449

July 8, 2021

To: Jonathan Yeo, Chief Operating Officer  
Maureen Lemieux, Chief Financial Officer

From: James McGonagle, Commissioner

Subject: Request for Docket Item for Intersection Improvements at the  
Pettee Square Intersection, Chestnut St at Oak St, Newton Upper Falls

The Department of Public Works is proposing a series of intersection improvements at the Chestnut Street at Oak Street intersection as part of the Pettee Square streetscape enhancements. An important design goal is to improve pedestrian, bicycle and vehicular safety, in keeping with the city's complete streets initiative.

The design project is being funded by a Mass Works reimbursable grant, which the City Council approved as part of Docket Item #238-20 on May 4, 2020. The construction is proposed to be funded by a continuation of the Mass Works reimbursable grant.

The preferred preliminary design plans of the proposed intersection improvement are attached. Final design plans are being developed. The construction of this intersection improvement is scheduled for the 2022 construction seasons, pending a successful grant application from Mass Works. Key attributes include a raised intersection, stamped sidewalks, and ADA pedestrian curb ramps.

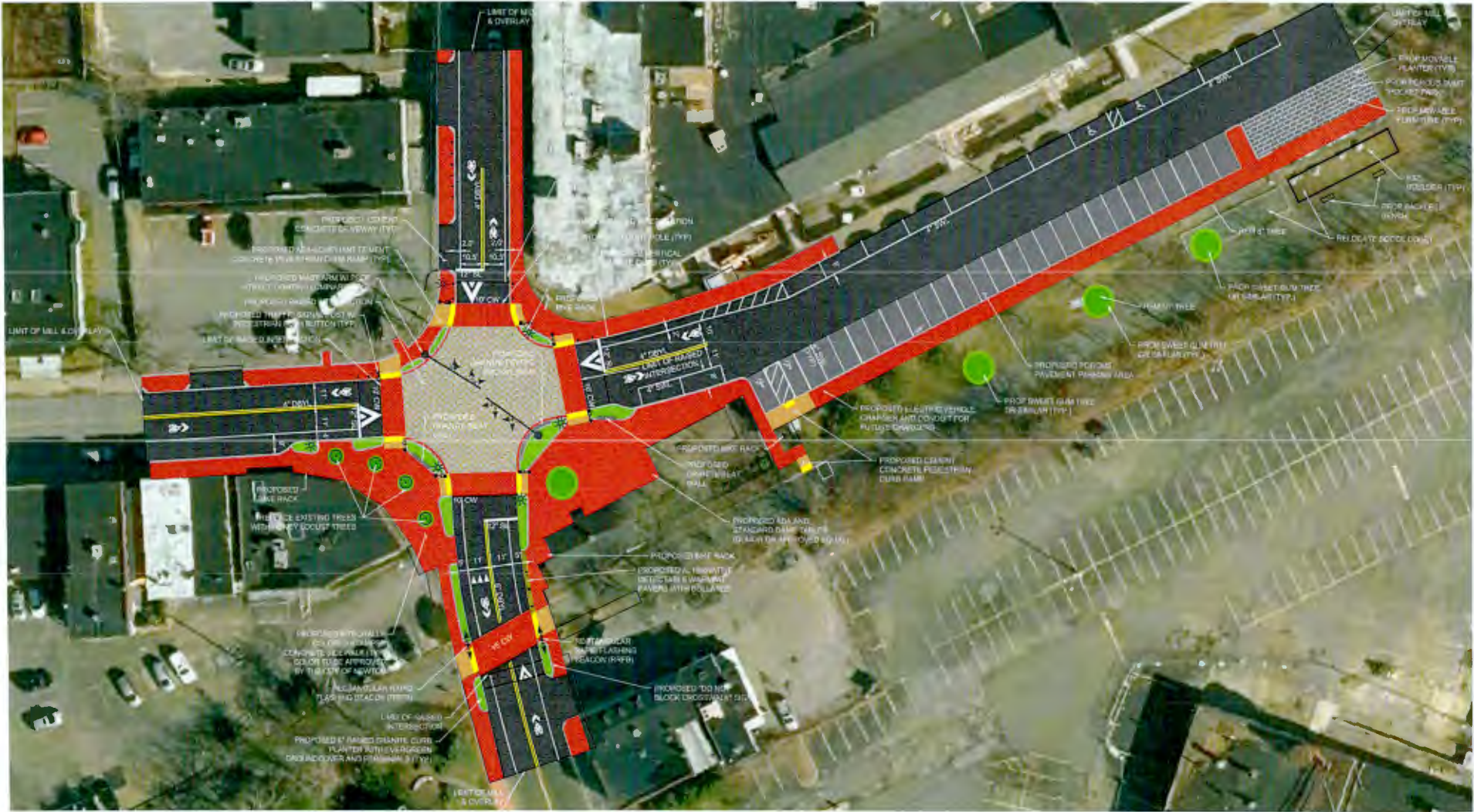
The project has been brought before the Newton Upper Falls Historic District Commission on three occasions. On July 8, 2021, the Commission voted to approve the Certificate of Appropriateness for the project. City staff also presented the project to the Newton Upper Falls Area Council to gather their feedback and comments.

In accordance with City Ordinance Section 26-51, please docket this request with the Honorable City Council for their consideration.

Sincerely,

James McGonagle  
Commissioner Public Works

cc: Shawna Sullivan, DPW Deputy Commissioner  
Louis M. Taverna, P.E., City Engineer  
Jason Sobel, P.E., PTOE, Director of Transportation Operations  
Barney Heath, Director of Planning and Economic Development  
Devra Bailin, Economic Development Director  
Telephone: 617-796-1009 • Fax: 617-796-1050 • [Jmcgonagle@newtonma.gov](mailto:Jmcgonagle@newtonma.gov)



**Intersection Improvements**

Oak Street at Chestnut Street  
 Newton, Massachusetts

**TEC**  
 The Engineering Corp  
 146 Discomb Road  
 Andover, MA 01810  
 978-799-1792  
 TheEngineeringCorp.com

311 Main Street  
 2nd Floor  
 Worcester, MA 01609  
 508-868-5104

159 Oakin Blvd, Unit 3  
 PO Box 249  
 Hampton, NH 03842  
 603-881-8194



June 10, 2021



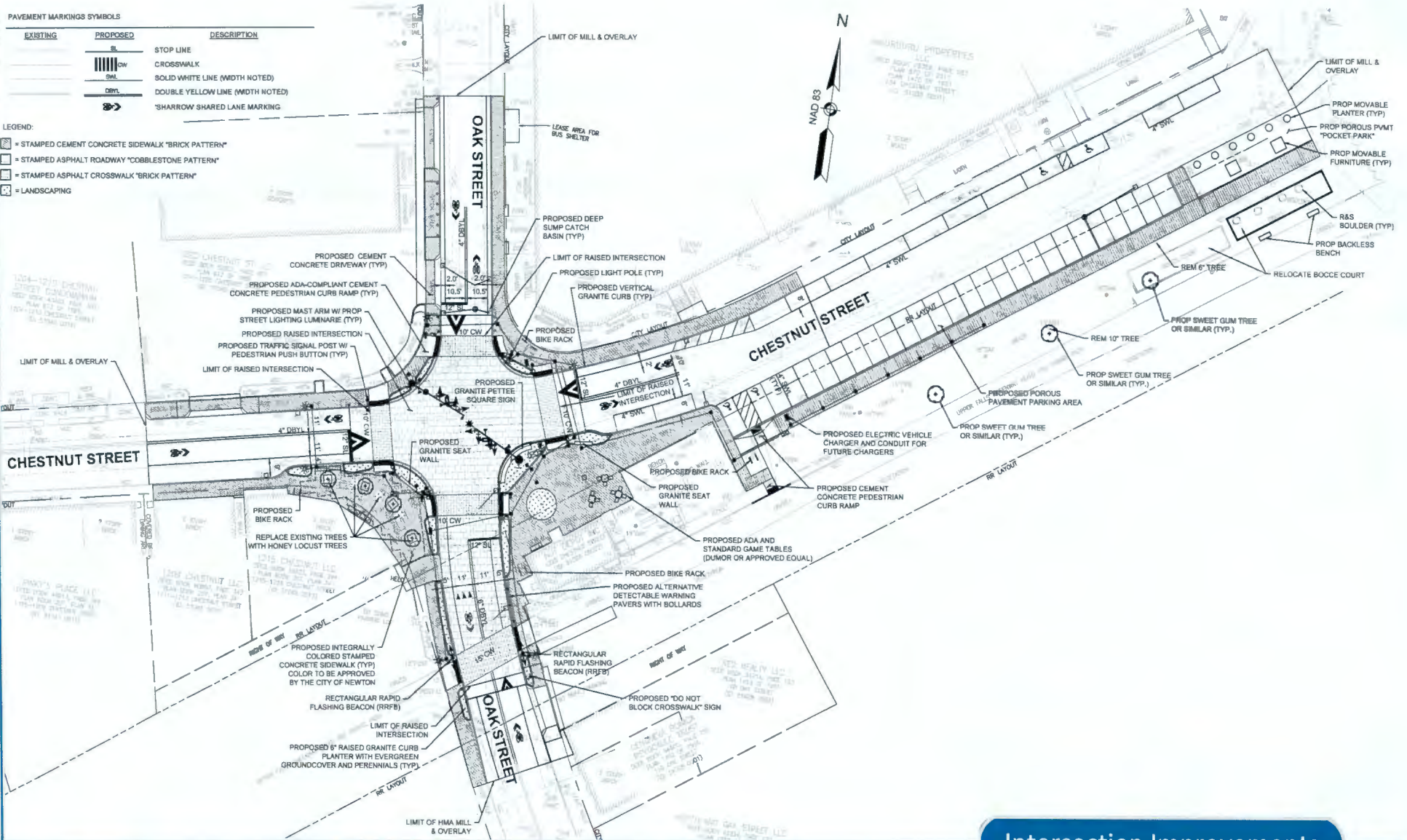
Legend

- = Pavement Resurfacing
- = Stamped Concrete Sidewalk
- = Stamped Asphalt Pavement
- = Grass/Landscape area
- = ADA Pedestrian Curb Ramp

PAVEMENT MARKINGS SYMBOLS

EXISTING	PROPOSED	DESCRIPTION
		STOP LINE
		CROSSWALK
		SOLID WHITE LINE (WIDTH NOTED)
		DOUBLE YELLOW LINE (WIDTH NOTED)
		SHARROW SHARED LANE MARKING

- LEGEND:
- = STAMPED CEMENT CONCRETE SIDEWALK "BRICK PATTERN"
  - = STAMPED ASPHALT ROADWAY "COBBLESTONE PATTERN"
  - = STAMPED ASPHALT CROSSWALK "BRICK PATTERN"
  - = LANDSCAPING



## Intersection Improvements

Oak Street at Chestnut Street  
Newton, Massachusetts



146 Dancomb Road  
Andover, MA 01810  
978-794-1792

211 Main Street  
2nd Floor  
Worcester, MA 01608  
508-868-5104

169 Ocean Blvd, Unit 3  
PO Box 249  
Hampton, NH 03842  
603-601-8154

TheEngineeringCorp.com



July 8, 2021





RUTHANNE FULLER  
MAYOR

City of Newton, Massachusetts  
Office of the Mayor

**282-21**  
Telephone  
(617) 796-1100  
Telefax  
(617) 796-1113  
TDD  
(617) 796-1089  
E-mail  
[rfuller@newtonma.gov](mailto:rfuller@newtonma.gov)

July 6, 2021

Honorable City Council  
Newton City Hall  
1000 Commonwealth Avenue  
Newton Centre, MA 02459

RECEIVED  
2021 JUL -6 PM 4:41  
CITY CLERK  
NEWTON, MA. 02459

Councilors:

I respectfully submit a docket item to your Honorable Council requesting authorization to appropriate and expend \$325,900 and authorize a general obligation borrowing of an equal amount for the purchase of one (1) New Volvo L120H Volvo 4.50 yard front end loader. This loader will be operated daily by the Sustainable Materials Division of DPW at Rumford Ave, and will participate in all plowing operations.

Travis Mosca, the City's Director of Fleet Management has applied for a DERA grant from the MassDEP. The Diesel Emissions Reduction Act (DERA) program is funding up to 35% of applicable vehicle purchases to accelerate the retirement of older, less efficient, and more polluting diesel vehicles. If the City receives the grant award, we will reduce the borrowing by a corresponding amount.

Further, I request that your Honorable Council authorize any premium received upon the sale of the bonds or notes, less the cost of preparing, issuing, and marketing them, and any accrued interest received upon the delivery of the bonds or notes be applied to the costs of the project being financed by the bonds or notes and to reduce the amount authorized to be borrowed for the project by a like amount.

Thank you for your consideration of this matter.

Sincerely,

Ruthanne Fuller  
Mayor



## MUNICIPAL AND CONTRACTOR'S EQUIPMENT

22 North Maple Street  
Woburn, MA 01801

Tel (781) 935-3377  
Fax (781) 935-1563

## PROPOSAL

To:  
City of Newton  
Department of Public Works  
110 Crafts St  
Newton, MA 02459  
ATT: Travis Mosca Fleet Maintenance Supervisor

Date:  
June 14, 2021

Woodco Machinery is pleased to offer the following Volvo L120H quote through the Sourcewell national procurement contract for your consideration.

1 New Volvo L120H Volvo 4.50 yard front end loader with Volvo 6 cylinder 276hp low emission tier 4 final engine, fingertip bucket controls, Volvo quick hydraulic coupler, 3<sup>rd</sup> hydraulic function, 100% differential lock, forward and reverse rocker switch, heated operators seat, ac/heater/defroster, am/fm/cd radio, engine block heater, rotating beacon, left hand armrest, extra work lights front and rear, rear view camera, **Michelin** Snow Plus 23.5 x R25 tires, service, parts and operators manual, fire extinguisher, license plate bracket, operating weight 43,300.00, painted yellow and all other standard equipment.

**Equipment Included****Auto lube installed****Volvo Scale****Construction Forks****Holms 13' PD4.0 power angle plow****On-site operator and mechanical training****SmartCare first 500 hr service included****CareTrack 6 years Telematics Included****Warranty 12 Months Full Machine parts, service and travel****Total Selling price.....\$325,900.00**



Woodco Machinery is looking forward to providing the City of Newton with the Volvo premium products and first class service. Please do not hesitate to contact me if you have any questions or need further information.

By: Stephen Russell

Title: Sales Representative

22 North Maple Street Woburn, MA 01801-1707 Phone: (617) 935-3377 Fax: (617) 935-1563



# Vehicle Profile

Newton, MA

Vehicle: 235 2005 Volvo L90E (Yellow) (Plate# M98482)

**Vehicle Identification and Status:**

VIN:	L90EV66685	Mileage:	0	Status:	Available
Title No.:		Engine Hours:	9202	Location:	Highway Crafts
USDOT No.:		Condition:	Very Poor	Use Category:	Medium Consistent Duty

**Vehicle Photos**

**Vehicle Specifications**

Driver Front Corner



Passenger Front



Driver Rear Corner



Passenger Rear



Liters:	5.702	Fuel Type:	Diesel
Cylinders:	6	Fuel Tank Size:	
Alt Fuel:	No	Transmission:	AUTO
GVW:	34458	MTW:	
Front Tire Size:	20.5R25	Rear Tire Size:	20.5R25
Front Brakes:	Disc	Rear Brakes:	Disc
Brake System:	Hydraulic	Drivetrain:	4WD

**Vehicle Fluids**

Motor Oil:	15w40 24 qts	Rear Axle Fluid:	WB102
Transfer Case Fluid:		Hub Fluid:	
Transmission Fluid:	AT102	Hydraulic Fluid:	Volvo Super 46
Front Axle Fluid:	WB102	Coolant:	Zerex NF HD

**Vehicle Filters**

Oil Filter 1:	1820	Cabin Filter 1:	9979
Oil Filter 2:		Cabin Filter 2:	9980
Air Filter 1:	6744	Cabin Filter 3:	
Air Filter 2:	9137	Breather 1:	11172907 (x3)
Air Filter 3:		Breather 2:	
Fuel Filter 1:	3768	Gasket / O-Ring 1:	
Fuel Filter 2:	3782	Gasket / O-Ring 2:	
Fuel Filter 3:		Gasket / O-Ring 3:	
Fuel Filter 4:		Power Steering Filter:	
Hydraulic Filter 1:	7520	Coolant Filter:	4196
Hydraulic Filter 2:	9741	Other 1:	
Transmission Filter 1:	1730	Other 2:	
Transmission Filter 2:		Other 3:	



RUTHANNE FULLER  
MAYOR

City of Newton, Massachusetts  
Office of the Mayor

**283-21**  
Telephone  
(617) 796-1100  
Telefax  
(617) 796-1113  
TDD  
(617) 796-1089  
E-mail  
[rfuller@newtonma.gov](mailto:rfuller@newtonma.gov)

July 6, 2021

Honorable City Council  
Newton City Hall  
1000 Commonwealth Avenue  
Newton Centre, MA 02459

Councilors:

I respectfully submit a docket item to your Honorable Council requesting authorization to appropriate and expend \$725,000 and authorize a general obligation borrowing of an equal amount for the purchase of two 10-wheel swap loader trucks to be used for daily operations in the Streets Division, as well as for snow operations during the winter months. The request includes a large Epoke spreader attachment for the trucks.

Further, I request that your Honorable Council authorize any premium received upon the sale of the bonds or notes, less the cost of preparing, issuing, and marketing them, and any accrued interest received upon the delivery of the bonds or notes be applied to the costs of the project being financed by the bonds or notes and to reduce the amount authorized to be borrowed for the project by a like amount.

Thank you for your consideration of this matter.

Sincerely,

Ruthanne Fuller  
Mayor

CITY CLERK  
NEWTON, MA. 02459

RECEIVED  
2021 JUL - 6 PM 4:41

City of Newton

Ruthanne Fuller  
Mayor

DEPARTMENT OF PUBLIC WORKS  
OFFICE OF THE COMMISSIONER  
1000 Commonwealth Avenue  
Newton Centre, MA 02459-1449

To: Maureen Lemieux, Chief Financial Officer  
Jonathan Yeo, Chief Operating Officer

From: James McGonagle, Commissioner of Public Works

Subject: Appropriation for 2 Swap Loader Trucks for Streets Division

Date: July 2, 2021

---

I respectfully request that the Mayor docket a request to appropriate \$725,000 to replace two streets trucks in poor condition with two 10-wheel swap loader trucks for the Streets Division operations. Both new trucks will be used for daily operations and during snow operations. The request includes a large Epoke spreader attachment for the trucks.

Attached are vehicle profiles for the two trucks to be replaced and quotes for the new vehicles and Epoke spreader.

The purchase of these two trucks is in line with the City's Vehicle Replacement Plan.

Thank you for your consideration of this matter.

James McGonagle  
Commissioner

Telephone: (617) 796-1009 • Fax: (617) 796-1050 • [jmcgonagle@newtonma.gov](mailto:jmcgonagle@newtonma.gov)



# Vehicle Profile

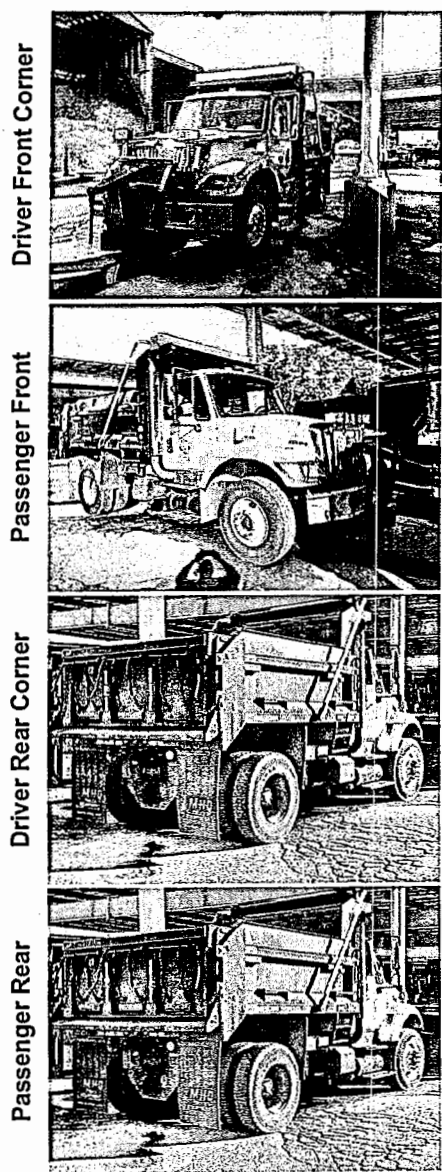
## Newton, MA

Vehicle: 102 2005 International 7400 (Orange) (Plate# M68263)

**Vehicle Identification and Status:**

VIN:	1HIWDAAR25J014178	Mileage:	53532	Status:	Available
Title No.:		Engine Hours:	0	Location:	Highway Crafts
USDOT No.:		Condition:	Poor	Use Category:	Heavy Consistent Duty

**Vehicle Photos** **Vehicle Specifications**



Driver Front Corner

Passenger Front

Driver Rear Corner

Passenger Rear

Liters:	7.6L	Fuel Type:	Diesel
Cylinders:	6	Fuel Tank Size:	
Alt Fuel:	No	Transmission:	AUTO
GVW:	37000	MTW:	
Front Tire Size:		Rear Tire Size:	
Front Brakes:	Drum	Rear Brakes:	Drum
Brake System:	Air	Drivetrain:	RWD

**Vehicle Fluids**

Motor Oil:	15w40	Rear Axle Fluid:	75w90 Syn w/Moly
Transfer Case Fluid:		Hub Fluid:	
Transmission Fluid:	Allison Fluid TES295	Hydraulic Fluid:	Mobil 424
Front Axle Fluid:		Coolant:	Zerex NF HD

**Vehicle Filters**

Oil Filter 1:	7744XD	Cabin Filter 1:	4315
Oil Filter 2:		Cabin Filter 2:	
Air Filter 1:	6870	Cabin Filter 3:	
Air Filter 2:		Breather 1:	
Air Filter 3:		Breather 2:	
Fuel Filter 1:	3719	Gasket / O-Ring 1:	
Fuel Filter 2:	1841628C1	Gasket / O-Ring 2:	
Fuel Filter 3:		Gasket / O-Ring 3:	
Fuel Filter 4:		Power Steering Filter:	7191
Hydraulic Filter 1:	1407XE	Coolant Filter:	
Hydraulic Filter 2:		Other 1:	
Transmission Filter 1:		Other 2:	
Transmission Filter 2:		Other 3:	



# Vehicle Profile

## Newton, MA

**Vehicle:** 103 2006 International 7600 (Yellow) (Plate# M98480)

**Vehicle Identification and Status:**

VIN:	1HTWYAHT86J316386	Mileage:	60300	Status:	Available
Title No.:		Engine Hours:	0	Location:	Highway Elliot
USDOT No.:		Condition:	Very Poor	Use Category:	Heavy Consistent Duty

**Vehicle Photos** **Vehicle Specifications**



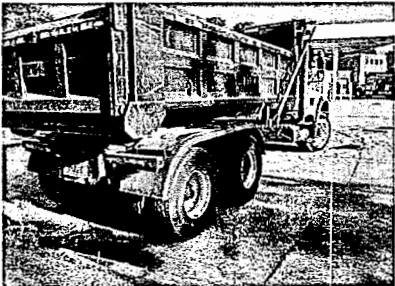
Driver Front Corner



Passenger Front



Driver Rear Corner



Passenger Rear

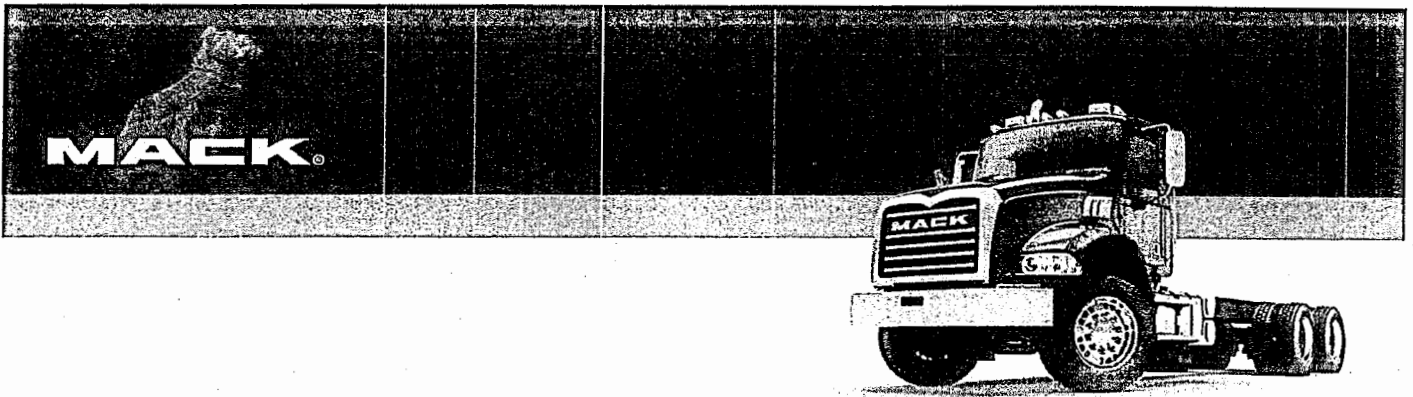
Liters:		Fuel Type:	Diesel
Cylinders:	6	Fuel Tank Size:	
Alt Fuel:	No	Transmission:	AUTO
GVW:	55002	MTW:	
Front Tire Size:		Rear Tire Size:	
Front Brakes:	Drum	Rear Brakes:	Drum
Brake System:	Air	Drivetrain:	RWD

**Vehicle Fluids**

Motor Oil:	15w40	Rear Axle Fluid:	75w90 Syn w/Moly
Transfer Case Fluid:		Hub Fluid:	
Transmission Fluid:	Allison Fluid TES295	Hydraulic Fluid:	Mobil 424
Front Axle Fluid:		Coolant:	Zerex NF HD

**Vehicle Filters**

Oil Filter 1:	400107	Cabin Filter 1:	4316
Oil Filter 2:		Cabin Filter 2:	
Air Filter 1:	9088	Cabin Filter 3:	
Air Filter 2:		Breather 1:	
Air Filter 3:		Breather 2:	
Fuel Filter 1:	3651XE	Gasket / O-Ring 1:	
Fuel Filter 2:		Gasket / O-Ring 2:	
Fuel Filter 3:		Gasket / O-Ring 3:	
Fuel Filter 4:		Power Steering Filter:	7191
Hydraulic Filter 1:		Coolant Filter:	WF2123 = 4084
Hydraulic Filter 2:		Other 1:	
Transmission Filter 1:		Other 2:	
Transmission Filter 2:		Other 3:	



## PRICING SUMMARY

### GRANITE 64BR

VEHICLE PRICE

\$164,440.00

### TAX SUMMARY

FET

AMT. SUBJECT TO TAX

\$164,440.00

\$0.00

TOTAL SELLING PRICE (PER UNIT)

\$164,440.00

NEWTON CITY OF

DATE

BALLARD MACK SALES & SERVICE, INC.

DATE

2 Mack Cab & Chassis

\$328,880.00

2 Body Equipment Per Madigan Quote

\$250,600.00

1 Epoke Per C.N. Wood

\$140,700.00

Total:

\$720,180.00



In Progress

NEWTON CITY OF  
110 CRAFTS ST OF  
NEWTON 00000  
MA

Date 6/30/2021

Quote no. PICK2021000282A595  
Your ref.

## Technical Specification

Please find below the Technical Specification for your new Mack Truck(s).

### GRANITE 64BR

#### APPLICATION PACKAGES

WITHOUT BODY BUILDER PKG

PK8 1710: CTO, RH BB; 45L DEF, SINGLE FUEL TANK, OUTBOARD AIR

#### CUSTOMER/VEHICLE INFO

GRANITE 64BR

2022 MODEL YEAR

US - WARRANTY REGISTRATION LOCATION

MUNICIPAL

USA REGISTRATION

Made in Macungie, PA USA

ENGLISH

DUMP TRUCK

EPA (only) for Mack MP7 / MP8 Diesel

80,000 LB (36 TONNES) GROSS COMBINATION WEIGHT

FIXED DRAWBAR TRAILER AND CENTERED AXLES

BRAKE REGULATION, STOPPING DISTANCE 94M (310FT)

GRADES <3% GREATER THAN 98% OF DRIVING DISTANCE MAX GRADE 8%

AMBIENT TEMPERATURE HOT. WARMER THAN 104 F (40 C) ALLOWED UP TO 25 HOURS PER YEAR

ON-OFF HIGHWAY, STARTING GRADES<18%

CONCRETE LOADING AND / OR UNLOADING SURFACE

CONSTRUCTION SERVICE

#### ENGINE/TRANSMISSIONS

MP8-425M MACK 425HP @ 1500-1900 RPM (PEAK) 2100 RPM (GOV) 1560 LB-FT, US'21

GREEN HOUSE GAS VOCATIONAL APPLICATION





Date 6/30/2021

Quote no. PICK2021000282A595

## In Progress

4500 RDS 6 SP-ALLISON RUGGED DUTY SERIES GEN 5 W/PROGNOSTICS  
WITHOUT 12TH GEARBOX GEAR LOCK-OUT

### EXHAUST/EMISSIONS

IDLE EMISSION CERTIFICATION, CARB (WITH DECAL LOCATED ON LOWER LH CORNER / DRIVER DOOR  
CLEARTECH ONE BOX E.A.T.S. RH SIDE UNDER CAB US17 / US21  
SINGLE VERTICAL RIGHT SIDE CAB MOUNTED, LOWER VENTURI DIFFUSER, TURNED END  
9' 6" FROM GROUND  
SINGLE, BRIGHT FINISH HEAT SHIELD, STACK AND SCR COVER (IF EQUIPPED)  
11.8 GALLON (45 L) 22" LEFT SIDE FRAME MOUNTED  
BRIGHT FINISH DEF COVER & STAINLESS STEEL DPF COVER  
EMISSION OBD, DISPLAY ONLY, USA2021

### ENGINE EQUIPMENT

UNDER HOOD SINGLE ELEMENT DRY TYPE W/AIR CONTROLLED INSIDE-OUTSIDE AIR INTAKE  
BLACK ALUMINUM BUG SCREEN MOUNTED BEHIND GRILLE, WITHOUT WINTER FRONT COVER  
WABCO AIR DR SS-HP AIR DRYER W/ WABCO 318 (18.7 CFM) AIR COMPRESSOR  
DELCO 12V 160A (28SI) BRUSH-TYPE  
(3) MACK 12V 1000/3000 CCA THREADED STUD TYPE  
ETHYLENE GLYCOL FULLY FORMULATED COOLANT (50/50 MIX DYED PINK) TO -34DEG, W/ FILTER  
BEHR FAN AND ELECTRONIC MODULATING VISCOUS FAN DRIVE  
MACK MP8 POWERLEASH  
MACK W/MANUAL DRAIN VALVE W/ HOT RECIRCULATION (INTEGRAL W/ PRIMARY FUEL FILTER)  
FLAMING RIVER BIG SWITCH WIRED TO POSITIVE SIDE  
RH RAIL BEHIND SCR  
MOLDED PLASTIC  
SILICONE RADIATOR & HEATER HOSES W/BREEZE CONSTANT TORQUE CLAMPS ON ALL COOLANT LINES  
12 VOLT MELCO STARTER (MITSUBISHI ELECTRIC)  
CORROSION RESISTANT OIL PAN  
WITHOUT ENGINE STOP, EMERGENCY  
RADIATOR, CORE AREA W/O FEPTO 1345sq in (86sq dm), CORE AREA W/ FEPTO 1296sq in (83sq dm)  
GRID HEATER + 120v 1500w BLOCK HEATER + 150w OIL PAN HEATER (120V-20A PLUG)  
VEHICLE AND TRAILER (IF APPLICABLE) STOP LAMPS ACTIVATE UPON SERVICE BRAKE APPLICATION ONLY(3899000)  
W/O ALCOHOL EVAPORATOR



Date 6/30/2021

Quote no. PICK2021000282A595

## In Progress

**CLUTCH/TRANS EQUIPMENT**

ALLISON DASH MOUNTED SHIFTER W/NEUTRAL TO RANGE INHIBIT (HD SERIES)  
 WITHOUT CLUTCH CABLE SYSTEM  
 SPICER 1810 HD W/COATED SPLINES (PROPS-L)  
 SPICER 1710 HD W/COATED SPLINES  
 TRANSYND SYNTHETIC LUBE FOR ALLISON TRANS  
 ALLISON TRANS. W/DIRECT MOUNT COOLER & SS COOLANT TUBES  
 UNIVERSAL JOINT HALF-ROUND TYPE  
 TRANSMISSION OUTPUT TORQUE BASIC  
 HALF-ROUND UNIVERSAL JOINT  
 ALUMINUM

**FRONT AXLE EQUIPMENT**

20000# (9100 KG) MACK FXL20 WIDE PIVOT CENTER STRAIGHT SPINDLE/UNITIZED  
 BEARINGS  
 MACK MULTILEAF HD 20000# (9100 KG) GROUND LOAD RATING, EQUAL BIAS  
 MERITOR "S" CAM TYPE 16.5" x 6" Q+  
 CAST IRON  
 DUST SHIELDS FOR FRONT AXLE  
 HALDEX - AUTOMATIC  
 FRONT BRAKE CHAMBER MANUFACTURER, MGM  
 FERROUS  
 DOUBLE ACTING TYPE  
 SHEPPARD M100P + M90 POWER  
 PETROLEUM/SYNTHETIC (50/50) OIL FRONT AXLE

**REAR AXLE EQUIPMENT**

52000# (23600kg) MACK S522R CAST DUCTILE HOUSING  
 CRDP150/151 AVAILABLE WITH OPTIONAL DRIVER CONTROLLED INTERWHEEL  
 DIFFERENTIAL LOCKS, SEE 254 SYMBOL  
 4.80 RATIO  
 SS52 MACK MULTILEAF (CAMELBACK) 52000#, EXTRA THICK SPRING THICKNESS  
 BRONZE  
 56" AXLE SPACING (BOGIE WHEELBASE)  
 MERITOR HEAVY DUTY "S" CAM 16.5"x7" Q+  
 CAST IRON  
 REAR SPRING BRAKE CHAMBERS 30/30 TYPE  
 DRUM BRAKE CHAMBER ORIENTATION: High Mount - Rear of Axle - Chamber Down  
 HALDEX - AUTOMATIC  
 DUST SHIELDS FOR REAR AXLE  
 IRON PRESET REAR HUB W/INTEGRATED SPINDLE NUT



Date 6/30/2021

Quote no. PICK2021000282A595

## In Progress

FACTORY OPTION LUBE - REAR AXLE 80W-90  
 RUBBER SHOCK INSULATORS  
 MGM TR-T2 (TAMPER RESIST & BREATHER TUBE BRAKE CHAMBERS) LONG STROKE  
 DRIVER CONTROLLED INTER WHEEL DIFFERENTIAL LOCK ALL RR AXLES, MANUAL AIR  
 VALVE W/WARNING LIGHT.  
 BENDIX WITH TRACTION CONTROL 4S4M

### FRAME EQUIPMENT/FUEL TANKS

183"

71"

Bumper Position Extended 20" (snow)

STANDARD 2 STEP CAB ACCESS

11.1 x 90 x 300mm - (0.437" x 3.54" x 11.81"); RBM 2,820,000 LB-IN

BOC AND INTERMEDIATE CROSSMEMBERS, HD I-BEAM

STEEL SINGLE CHANNEL (1)

EXTENDED-SWEPT BACK-STEEL

HOOKS

66 GALLON (250 L) 22" ALUMINUM ROUND

BASIC FUEL LEVEL SENDER MOUNTED ON L.H TANK

W/O RH FUEL TANK

WITHOUT FILLER NECK SCREEN, WITH NON-LOCKABLE FUEL TANK CAP

STANDARD FINISH STEPS AND BRIGHT FINISH STRAPS

### AIR/BRAKE

MANUAL DRAIN VALVES, WITH LANYARDS ON ALL TANKS

ALUMINUM, PAINTED

TWO (2) VALVE DUAL BRAKE SYSTEM - TRAILER SUPPLY AND TRACTOR-TRAILER PARK

### ELECTRICAL

RH/LH LED WORK LIGHT (STEPS &amp; GROUND) ON BOTH SIDES TRUCK

(5) TRUCKLITE CHROME BULLET ROOF MARKER &amp; STANDARD MARKER / DIRECTIONAL SIGNAL

DASH CTRL/PWR SUPPLY/LOCAL INST PLOW LAMPS W/LEAD FURN@ GRILL W/2W/3W

WEATHER PACK CON

INCANDESCENT TAIL LAMPS

(4) 15A, IGNITION POWERED, (2) 15A BATTERY POWERED, ALL LATCHING ON/OFF

W/OVERRIDE SWITCH, PARK BRAKE &amp; ENGINE RUNNING ACTIVATED

DRL OVERRIDE SPEED THRESHOLD 8 KMPH (5 MPH)

### TRAILER CONNECTIONS

TRAILER AIR BRAKE CONNECTIONS, END OF FRAME

SINGLE 7 PINS STD SAE TYPE, END OF FRAME



Date 8/30/2021

Quote no. PICK2021000202A595

**In Progress****PTO**

TRANSMISSION PTO SWITCH AND LIGHT WITH WIRING AND PIPING FOR LOCAL  
 INSTALLATION  
 1350 SERIES FLANGE (DOES NOT INCLUDE FRONT FRAME EXTENSION)  
 BODY LINK III W/O CAB PASS-THRU

**SPECIALTY EQUIPMENT**

WITHOUT CAMERA  
 WITHOUT DATA CAPTURE  
 WITHOUT AUXILIARY TRANSMISSION  
 WITHOUT AUXILIARY TRANSMISSION LOCATION  
 WITHOUT ACC / LSS SYSTEMS  
 WITHOUT ACC, LSS, OR BLIND SPOT DETECTION SYSTEMS  
 WITHOUT LANE SUPPORT SYSTEM

**CAB INTERIOR (A THRU G)**

REAR AXLE OIL TEMP GAUGE IN DID (DRIVER INFORMATION DISPLAY)  
 BLEND AIR HVAC W/"ATC" TEMP REGULATION  
 DASH MTD, INDICATOR BODY/HOIST UP "BODYBUILDER LAMP"  
 (4) DOME LAMPS - DOOR AND SWITCH ACTIVATED  
 5LB (ABC RATED) MOUNTED BETWEEN DRIVER SEAT BASE AND DOOR VALVE AIMED  
 REARWARD  
 POLYURETHANE FLOOR MAT WITHOUT REMOVABLE INSERTS  
 WITHOUT CARBON MONOXIDE DETECTION SYSTEM  
 U.S. UNITS (PREDOMINANT)

**CAB INTERIOR (H THRU R)**

DEFAULT: ENGLISH, SPANISH, FRENCH  
 (2) STORAGE COMPARTMENTS AND NET RETAINERS W/CENTER MOUNTING FOR CB  
 PROVISIONS  
 PREMIUM STEREO, AM/FM, MP3, WEATHER BAND, BLUETOOTH  
 RADIO ANTENNA, CAB MOUNTED BEHIND LH DOOR  
 48" ANTENNA LEFT SIDE MIRROR MOUNTED  
 POWER LEADS (5-WAY BINDING POSTS FOR CB RADIO) IN HEADER CONSOLE  
 SPEAKER LOCATION, IN DOORS, MIDDLE HIGH SIDE PANEL  
 CB RADIO MOUNTING REINFORCEMENT IN HEADER CONSOLE  
 REAR WINDOW (FIXED TYPE)  
 EMERGENCY REFLECTOR KIT MOUNTED PARALLEL & CENTERED AGAINST BOC  
 STORAGE POUCH REAR  
 ALL CHASSIS KEYED AT RANDOM

**CAB INTERIOR (S THRU Z)**



Date 8/30/2021

Quote no. PICK2021000282A695

## In Progress

MACK-AIR, HIGH BACK, 4 CHAMBER AIR LUMBAR, BOLSTER, EXTENSION  
 DRIVER'S SEAT - STEEL GREY VINYL / CLOTH MIX  
 MACK-AIR, HIGH BACK, 1 CHAMBER AIR LUMBAR  
 PASSENGER'S SEAT - STEEL GREY VINYL  
 INBOARD MOUNTED ARM REST, DRIVER'S SEAT ONLY  
 LAP & SHOULDER (BOTH SEATS) ORANGE IN COLOR  
 STANDARD PACKAGE, STEEL GRAY (Package 11A)  
 KEY TYPE  
 2 SPOKE URETHANE GRIP, GUNMETAL SPOKES, W/O SWITCHES  
 HEATED TINTED WINDSHIELD, TINTED SIDE AND REAR WINDOW  
 TWO PIECE WINDSHIELD  
 2 SPEED ELECTRIC MOTOR W/INTERMITTENT FEATURE & ARCTIC WIPER BLADES

### CAB - SLEEPER BOX

Day Cab (No Sleeper)  
 W/O MATTRESS

### CAB EXTERIOR

WITH INSPECTION HATCH FOR SNOWPLOW HOOD  
 (2) MACK RECTANGULAR SINGLE TRUMPET, BRIGHT FINISH ALUMINUM W/SNOW SHIELDS  
 SINGLE TONE  
 OMIT CONVEX MIRRORS  
 BULLDOG STYLIZED MIRRORS - LH & RH HEATED & MOTORIZED W/INTEGRAL CONVEX  
 MIRROR  
 8" ROUND BF FENDER MTD W/SS BRACKETS & ADJ. ARMS R.H. & L.H. (Same as 15H2001)  
 OMIT CONVEX MIRRORS  
 SUN VISOR, EXTERIOR, FIBERGLASS (PAINTED)  
 BF EXTERIOR CAB GRAB HANDLES, BLACK GRAB HANDLE RH INTERIOR WINDSHIELD

### POST

BRIGHT FINISH GRILLE W/O SURROUND RADIATOR MOUNTED  
 GRAY AIR INTAKE WITH BLACK HOOD LATCHES  
 AUXILIARY WINDOW IN RH DOOR

### AERODYNAMIC DEVICES

WITHOUT FRONT AERODYNAMIC FAIRINGS

### WHEELS & TIRES

ADVANCED LOW ROLLING RESISTANCE, BEST FUEL ECONOMY  
 315/80R22.5 L CONTINENTAL HAU3 WT (20000 lbs)  
 22.5x9.00 ALCOA 89U63x CLEAN BUFFED, ALUMINUM, 4.06" OFFSET, 10 HAND HOLE  
 BASIC ROLLING RESISTANCE, POOR FUEL ECONOMY  
 12R22.5 H MICHELIN XDN2 (27120 lbs) (DRIVE ONLY)



Date 8/30/2021

Quote no. PICK2021000282A595

## In Progress

22.5x8.25 ALCOA 88565x SEVERE SERVICE, CLEAN BUFFED ALUMINUM, 6.60" OFFSET, 10  
 HAND HOLE  
 DRIVE WHEEL STUDS LONGER LENGTH  
 WHEEL NUT BASIC FINISH, REAR  
 STANDARD VALVE STEMS AND CAPS  
 WITHOUT FRONT HUB/WHEEL TRIM  
 WITHOUT REAR HUB/WHEEL TRIM  
 WITHOUT WHEEL (LUG) WRENCH

### COMMUNICATION SYSTEMS

CO-PILOT DISPLAY, DRIVER ACCESS LEVEL 1  
 W/O NAVIGATION/COMM DEVICE  
 TELEMATICS GATEWAY, 4G/LTE AND WLAN SYSTEM WITH DIAGNOSTIC SERVICES  
 WITHOUT SOFTWARE DOWNLOAD PASSWORD  
 WITHOUT SOFTWARE DOWNLOAD NOTIFICATION

### ENGINE ELECTRONICS

WITHOUT ENGINE SOFTWARE SETTINGS  
 OIL PRESSURE, ENGINE SHUTDOWN  
 COOLANT TEMP, ENGINE SHUTDOWN  
 ENGINE PROTECTION (SHUTDOWN)  
 IDLE CONTROL, 650 RPM  
 INCREASE 10 MINUTE MAXIMUM TIME  
 IDLE SHUTDOWN ABS TAMPER CHECK, ENABLED  
 ENGINE IDLE COOLDOWN, DISABLE  
 ENGINE IDLE SHUTDOWN, DISABLE  
 30 SEC IDLE S/D WARNING TIME  
 38C DEG (100F), WARM UP TEMP DELAY  
 5 MIN. WARM UP TIME DELAY  
 ENGINE IDLE SHUTDOWN TIME OVERRIDDEN IF PTO ACTIVE  
 ENG IDLE SHUTDOWN TIME OVERRIDDEN IF TORQUE > THAN LIMIT  
 IDLE SHUTDOWN OVERRIDE UPTO 20% ENGINE LOAD THRESHOLD  
 AMBIENT TEMP MIN TRESHOLD, 16 DEG C, (60 DEG F)  
 AMBIENT TEMP MAX TRESHOLD, 27 DEG C, (80 DEG F)  
 ELECTRONIC HAND THROTTLE, MAX ROAD SPEED, 16 KM/H (10 MPH)  
 ELECTRONIC HAND THROTTLE, MAX ENGINE SPEED, 2100 RPM  
 ELECTRONIC HAND THROTTLE, MIN ENGINE SPEED, 700 RPM  
 ELECTRONIC HAND THROTTLE, SPEED RAMP RATE, 100 RPM/SEC

### TRANSMISSION ELECTRONICS



Date 6/30/2021

Quote no. PICK2021000282A595

## In Progress

DUMP/VOCATIONAL(223) - ALLOWS TRUCK TO BE PUT IN GEAR WITHOUT SERVICE BRAKE (FOR PAVING)

W/O ALLISON FUELSENSE 2.0 PROGRAMMING

ALLISON PARK BRAKE AUTO NEUTRAL-ALLOWS THE DRIVER TO ENGAGE GEAR PRIOR TO DISENGAGING THE PARK BRAKE

MACKCELLERATOR DISABLE

### VEHICLE ELECTRONICS

ACCELERATION LIMITING FEATURE, DISABLED

WITHOUT DRIVER PERFORMANCE PARAMETERS

DRIVER ID FUNCTION, DISABLED

ENGINE OVERSPEED, ALL CONDITIONS, TIME LOG IF ABOVE 2200 RPM

ENGINE OVERSPEED, FUELED, TIME LOG IF ABOVE 2100 RPM

VEHICLE OVERSPEED, ALL COND, TIME LOG IF ABOVE 75MPH (121KMH)

VEHICLE OVERSPEED, FUELED, TIME LOG IF ABOVE 70MPH (113KMH)

ENGINE IDLE DELAY TO START LOG, 2 MIN

PERIODIC TRIP LOG, DAY 1 OF THE MONTH

DETECTION OF SPEED SENSOR TAMPERING, ENABLE

ENG TORQUE LIMITED TO 50%, IF SPEED SENSOR TAMPER DETECTED

ENGINE HIGH IDLE SPEED IN UPPER GEARS, DISABLED

105 KM/H ROAD SPEED LIMITER(65 MPH)

105 KM/H PEDAL ROAD SPEED LIMITER (65MPH)

DISABLE POWER DIVIDER LOCK OUT (PDLO) ROAD SPEED LIMIT

POWER DIVIDER LOCK OUT (PDLO) ROAD SPEED LIMIT 8KMH (5MPH)

MAX CRUISE, 105 KPH (65 MPH)

MIN CRUISE, 32 KPH (20 MPH)

ENG BRK ENGAGE IN CRUISE, 3 MPH, ABOVE SET SPEED

CRUISE CONTROL

### PTO ELECTRONICS

PTO 1ST, SINGLE SPEED SETTING, 1000 RPM

1ST PTO, MAX ROAD SPEED, 10 MPH (16 KPH)

PTO 1ST, SPEED RAMP RATE 100 RPM/SEC

PTO 1ST, MAX ENGINE SPEED, 2100 RPM

PTO 1ST, ROAD SPEED LIMIT, 97 KMH (60 MPH)

PTO 1ST, MINIMUM ENGINE SPEED, 600 RPM

PTO 1ST, AUTO SET SINGLE SPEED, DISABLE

PTO 2ND, SINGLE SPEED SETTING, 1000 RPM

2ND PTO, MAX ROAD SPEED, 10 MPH (16 KPH)

PTO 2ND, SPEED RAMP RATE 100 RPM/SEC

PTO 2ND, MAX ENGINE SPEED, 2100 RPM



Date 6/30/2021

Quote no. PICK2021000282A695

**In Progress**

PTO 2ND, ROAD SPEED LIMIT, 97 KMH (60 MPH)  
 PTO 2ND, MINIMUM ENGINE SPEED, 600 RPM  
 PTO 2ND, AUTO SET SINGLE SPEED, DISABLE

**PAINT**

SINGLE COLOR  
 SOLID PAINT  
 MACK WHITE; P9188  
 PAINT - CAB, URETHANE CLEAR COAT  
 SAME AS FIRST COLOR - CAB  
 SAME AS FIRST COLOR - HOOD  
 SAME AS FIRST COLOR - SUN VISOR  
 MACK BLACK (URETHANE)  
 PAINT BUMPER SAME COLOR AS CHASSIS RUNNING GEAR  
 SAME AS CHASSIS RUNNING GEAR  
 SAME AS CHASSIS RUNNING GEAR

**BASE WARRANTY & PURCHASED COVERAGES**

HEAVY DUTY WARRANTY CLASSIFICATION  
 HEAVY DUTY STANDARD BASE COVERAGE 12 MONTHS/100,000 MILES (161,000 KM)  
 EPA (only) for Mack MP7 / MP8 Diesel  
 MACK MP7/MP8 BASE ENGINE COVERAGE 24 MONTHS / 250,000 MILES (402,000KM)  
 US and CANADA EQUIPPED VEHICLE EMISSION COMPONENTS COVERAGE 60  
 MONTHS/100,000 MILES (161,000 KM)  
 ALLISON TRANSMISSIONS (Contact Allison Transmission for standard warranty and extended  
 coverage data  
 STANDARD MACK HEAVY DUTY COVERAGE 60 MONTHS / 500,000 (804,672 KM)  
 AIR CONDITIONING STANDARD COVERAGE (Sealed System Only) 12 MONTHS UNLIMITED  
 MILEAGE  
 STANDARD NORMAL / HEAVY DUTY CHASSIS TOWING 90 DAYS OR 5,000 MILES  
 STANDARD MACK ENGINE TOWING COVERAGE 24 MONTHS/250,000 MILES (402,000 KM)  
 24 MONTH - GUARDDOG CONNECT WITH MACK OTA (with ASIST and Mack OneCall))  
 WITHOUT PREPAID API  
 W/O CUSTOM/BUNDLED PURCHASE COVERAGE OPTION

**Market Extras**

22A Freight (28)  
 22A Price Escalator (Granite 22A)

**Internal Workshop**

pac  
 1 rearspare tire and wheel



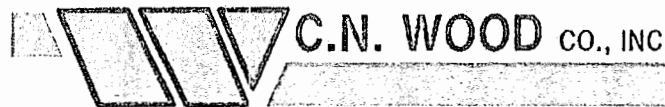


### In Progress

allison total 5 year warranty  
mack engine plan 2 WEATS 5 year  
mack chassis plan 2 years 100,000 miles  
mack axle carrier plan 5 years  
engine tow warranty only  
floor mats and lcc  
gbpc  
city graphics \$1000 allowance  
gps parts only  
trigger for air cab clean out  
4 ignition keys  
battery blankets

Date 6/30/2021

Quote no. PICK2021000282A595



## MUNICIPAL AND CONTRACTORS' EQUIPMENT

200 Merrimac Street  
Woburn, MA 01801

## PROPOSAL

Tel. (781) 935-1919  
Fax (781) 937-9809

To: City of Newton – DPW  
110 Crafts Street  
Newton, MA 02548  
Attn: Travis Mosca Fleet Supervisor

Date:  
June 30, 2021

C.N. Wood Co. is pleased to offer the following budget quotation for purchase of an Epoke Spreader through the Sourcwell national procurement contract for your consideration.

Epoke S4900 Sirius Combi AST road speed related truck mounted spreader (driven by truck mounted hydraulic system) with the following standard features and included options:

49XX	stainless steel agitator with replaceable steel spring fingers
49XX	stainless steel delivery roller with 8mm steel cams
49XX	soft rubber base & standard spring base and spring base adjustment
49XX	conveyor belt
49XX	galvanized feed funnel and inspection ladder
49XX	central grease bank
608953	hydraulic fittings JIC -- 12 pressure & return- Dealer to supply hydraulic hoses
606162	large distribution box
608362	EpoMaster III controller with RS232 & card reader
609609	ground speed adapter
609026/27	wiring only for work light and wiring and beacon stems for two beacons
608765	hydraulic pressure gauge in machine house
608083	neutral gear
608XXX	auto stop fill, liquid level indicator and camlock coupling for liquid pump off
49XX	safety grate 4" X 4" with 8 degree slope
608134	level indicator for dry material

Epoke SH4900 Sirius Combi AST large hopper equipped as above with 2 X 405 gallon side tanks.

External front tanks are selected separately

4910 large 3m<sup>3</sup> + 1m<sup>3</sup> (7.2 cubic yard)

Select one of the following chute arrangements:

608774	Short chute arrangement for truck bed height 1072 - 1377 mm (42" to 54")
608773	Long chute arrangement for truck bed height 1415 - 1770 mm (55" to 70")

**Paint:** Spreaders are painted standard Epoke RAL 2011 orange.

**Options:**

External Front Tanks:

608193 265 gallon

605423 Electric symmetry

49XX Lighting includes LED Megabeam work light and two LED rotating orange beacons

**Sell Price – Does Not Include Installation . \$115,500.00**

**MOUNTED:.....\$25,200.00**

**TOTAL SELLING PRICE.....\$140,700.00**

By: Steve Russell  
Title: Sales Representative

J.C. MADIGAN INC.  
450 OLD UNION TURNPIKE  
LANCASTER, MA.

SALES DEPT.  
TEL. (978)847-2900  
FAX (978)847-0068

QUOTE: CITY OF NEWTON HWY DEPT.

TO SHAWN R @ BALLARD MACK

FROM JOHN DWYER

A) 40,000 LB CAPACITY SWAPLOADER MODEL SL-400 INSTALLED  
ON A CITY SUPPLIED CHASSIS WITH THE FOLLOWING  
EQUIPMENT

- 1) (2) TRANSMISSION MOUNTED HOTSHIFT CENTRAL HYDRAULICS (1) FOR SWAPLOADER FUNCTIONS & 4-WAY PLOW (1) EPOCH FUNCTIONS W/ FUNCTION VALVE TO ALLOW RETURN TO SUPPLY WHEN NOT BEING USED
- 2) POLY REAR TANDEM FENDERS W/ REAR MUDFLAPS
- 3) BACKUP ALARM 102dba / BUYER'S B95W BACKUP SWITCH
- 4) REAR PINTLE PLATE ASSEMBLY WITH D-RINGS, (3) LIGHT STAINLESS BOXES W/ (4) LED FLASHERS & (2) LED ST/TL/BU'S, & RECESSED LED TRUCKLITE #5070 & 5071
- 5) (2) FRAME MOUNTED 48" STAINLESS BAWER TOOL BOXES
- 6) STAINLESS FRAME MOUNTED BOC TO PINTLE SPILL PLATE
- 7) REAR BACKUP CAMERA W/ IN-CAB COLOR DISPLAY
- 8) REAR CUSTOM PAINTED STEEL CABGUARD W/ SCREENED WINDOW & (2) LED ECCEW2112 WORKLIGHTS
- 9) CAB ROOF MTD. WHELEN MINI LIBERTY II LIGHT BAR
- 10) (2) REAR MOUNTED LED WORK/BACKUP LIGHTS ECCEW2112
- 11) FRAME MOUNTED CHOCK BLOCK HOLDERS & CHOCKS
- 12) VENTSHADE BRAND WINDOW SHADES INSTALLED
- 13) PEDISTAL MOUNT CUSTOMER SUPPLIED EPOCH CONTROLS & FRAME MOUNTED CONTROL VALVES
- 14) IN-CAB MOUNTED ROADWATCH DISPLAY W/ MIRROR MOUNTED SENSOR

PRICE \$81300.00

OPTIONS:

- A) EVEREST POWER TILT PLOW FRAME MODEL PT W/ HOOD MOUNTED LED ABL PLOWLIGHTS ON STAINLESS STEEL MOUNTS, PIN ON CLAMP JAW ADAPTER, AND WHELEN IONA FLASHERS

PRICE \$10750.00

B) 10' EVEREST R120TEL3654SH-(V) VORTEX STYLE STEEL  
SNOW PLOW W/ CUTTING EDGE, GUIDEPOLES, CURB  
SHOES, WEAR SHOES, AND CLAMP JAW OSCILLATOR BAR.

PRICE \$11250.00

NOTE!! 146" CT , FRAME EXT.,(2) CLEAR PTO PROV., (6) AUX DASH  
SWITCHES, PLOWLIGHT PREP

**BODY MOUNTING OPTIONS**

A) INSTALL A SUPPLIED EPOCH W/ NEW SWAPLOADER SKID & ROLLERS W/  
ELECTRICAL AND HYDRAULIC CONNECTIONS INSTALLED ADD \$7500.00

B) REMOVE EXSISTING SKID FROM USED SUPPLIED EPOCH INSTALL  
SWAPLOADER SKID & ROLLERS W/ ELECTRICAL AND HYDRAULIC  
CONNECTIONS INSTALLED ADD \$10,000.00

C) CONVERT (if possible) EXSISTING STELLAR SKID MOUNTED ON A USED  
SUPPLIED EPOCH W/ ELECTRICAL AND HYDRAULIC CONNECTIONS  
INSTALLED ADD \$4500.00

APPROVAL \_\_\_\_\_ DATE \_\_\_\_\_

PO# \_\_\_\_\_

06/30/2021



Ruthanne Fuller  
Mayor

City of Newton, Massachusetts  
Office of the Mayor

284-21

Telephone  
(617) 796-1100  
Fax  
(617) 796-1113  
TDD/TTY  
(617) 796-1089  
Email

rfuller@newtonma.gov

Honorable City Council  
Newton City Hall  
1000 Commonwealth Avenue  
Newton, MA 02459

Honorable City Councilors:

I respectfully submit this docket item to this Honorable Council requesting the authorization to borrow up to \$20,837,000 in interest free loans from the Massachusetts Water Resources Authority (MWRA) Phase 3 water loan program. In 2020, the MWRA initiated another 10-year water loan program, called the Local Water System Assistance Program Phase 3. Newton is authorized to borrow up to \$2,083,700 per year in interest free 10-year loans, for a total of \$20,837,000. Yearly loans are paid in 10 equal installments annually. This new program will extend from 2022 to 2032.

This proposed borrowing will allow Public Works to implement a portion of the water main improvements as outlined in the 5-year Capital Improvement plan. Upgrading our water system will ensure the delivery of superior water quality through pipe replacement and cleaning and lining projects.

Since 1998, the City has participated in the MWRA's Local Water Pipeline Assistance Program. Total borrowing by Newton was \$25,860,190 in interest free loans in MWRA's Phase 1, and \$13,602,000 in interest free loans in MWRA's Phase 2. The current program for Newton will end in the fall of 2021.

Newton has approximately 319 miles of public water supply pipeline. Approximately 184 miles of our water mains are now lined. The City has approximately 135 miles of unlined water pipe remaining to be rehabilitated (42%). Through the use of a sophisticated Hydraulic Model, our water projects have been and will continue to be prioritized and planned based on age and hydraulic capacity. Through this borrowing authority, an additional 20 miles of water main will be rehabilitated over the next 10 years.

Please see the attached memo from Public Works Commissioner McGonagle. The Treasurer will submit a request to Bond Council for language to be provided to the Clerk's Office for inclusion in this docket item.

Thank you for your consideration of this matter.

Sincerely,

Mayor Ruthanne Fuller

RECEIVED  
2021 JUL - 6 PM 4:42  
CITY CLERK  
NEWTON, MA. 02459  
July 6, 2021

DEPARTMENT OF PUBLIC WORKS  
OFFICE OF THE COMMISSIONER  
1000 Commonwealth Avenue  
Newton Centre, MA 02459-1449

Ruthanne Fuller  
Mayor

April 30, 2021

To: Jonathan Yeo, Chief Operating Officer  
Maureen Lemieux, Chief Financial Officer

From: James McGonagle, Commissioner

Subject: Request for Water Funds Borrowing Authorization, \$20,837,000  
MWRA Local Water System Assistance Program Phase 3

I respectfully request an authorization to borrow up to \$20,837,000 in interest free loans from the Massachusetts Water Resources Authority (MWRA) Phase 3 water loan program. In 2020, the MWRA initiated another 10-year water loan program, called the Local Water System Assistance Program Phase 3. Newton is authorized to borrow up to \$2,083,700 per year in interest free 10-year loans, for a total of \$20,837,000. Yearly loans are paid in 10 equal installments annually. This new program will extend from 2022 to 2032.

This proposed borrowing will allow Public Works to implement a portion of the water main improvements as outlined in the 5-year Capital Improvement plan. Upgrading our water system will ensure the delivery of superior water quality through pipe replacement and cleaning and lining projects.

Since 1998, the City has participated in the MWRA's Local Water Pipeline Assistance Program. Total borrowing by Newton was \$25,860,190 in interest free loans in MWRA's Phase 1, and \$13,602,000 in interest free loans in MWRA's Phase 2. The current program for Newton will end in the fall of 2021.

Newton has approximately 319 miles of public water supply pipeline. Approximately 184 miles of our water mains are now lined. The City has approximately 135 miles of unlined water pipe remaining to be rehabilitated (42%). Through the use of a sophisticated Hydraulic Model, our water projects have been and will continue to be prioritized and planned based on age and hydraulic capacity. Through this borrowing authority, an additional 20 miles of water main will be rehabilitated over the next 10 years.

Pending your approval, the Treasurer will submit a request to Bond Council which will be provided to the Clerk's Office for inclusion as a docket item to the Honorable City Council.

cc: Susan Dzikowski, Comptroller  
Shawna Sullivan, DPW Chief of Staff  
Louis M. Taverna, P.E., City Engineer  
Theodore Jerdee, Director of Utilities  
Doug Valovcin, Deputy Director of Utilities  
Jack Cowell, DPW Finance Director