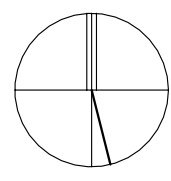
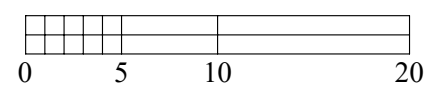


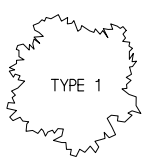
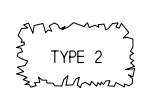
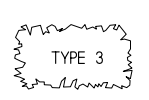
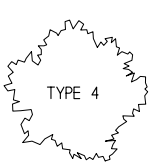

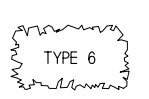
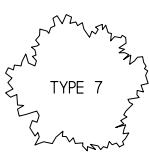
PROJECT NORTH



TRUE NORTH

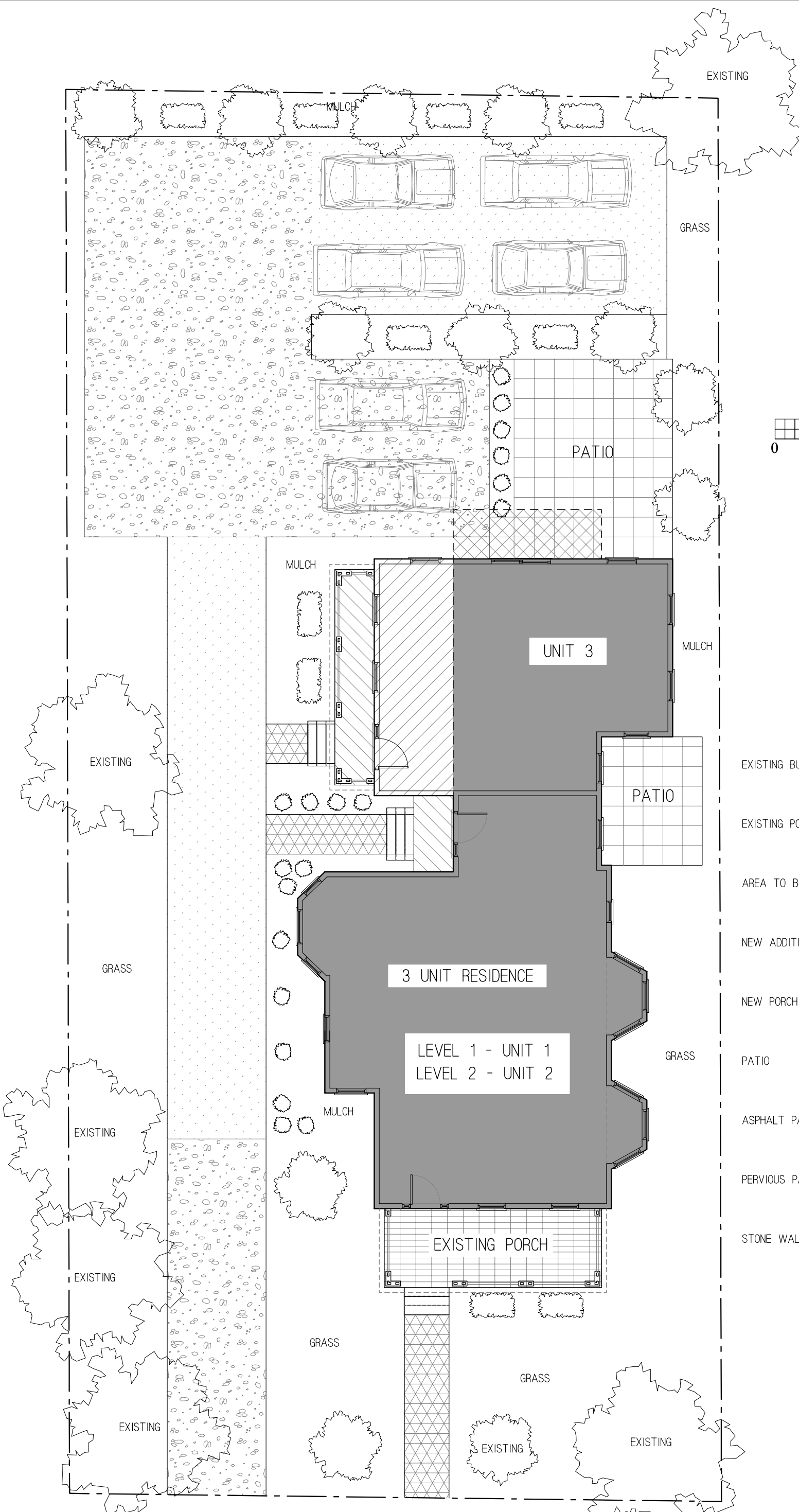


LEGEND

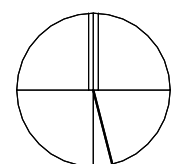
- TYPE 1 - MAPLE 
- TYPE 2 - YEW 
- TYPE 3 - BOXWOOD 
- TYPE 4 - DOGWOOD 
- TYPE 5 - DWARF SPRUCE 
- TYPE 6 - YEW 
- TYPE 7 - AMERICAN RED MAPLE 



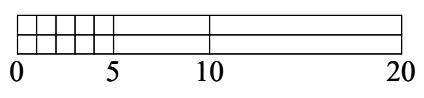
Proposed Development for  
 38 Richardson Street, Newton, MA  
 Scale: 1" = 50'  
 March 24, 2021



PROJECT NORTH



TRUE NORTH



LEGEND

EXISTING BUILDING		2,550 S.F.
EXISTING PORCH		175 S.F.
AREA TO BE DEMOLISHED		75 S.F.
NEW ADDITION		200 S.F.
NEW PORCH ADDITION		120 S.F.
PATIO		457 S.F.
ASPHALT PAVING		1,600 S.F.
PERVIOUS PAVING		1,250 S.F.
STONE WALKWAY		150 S.F.

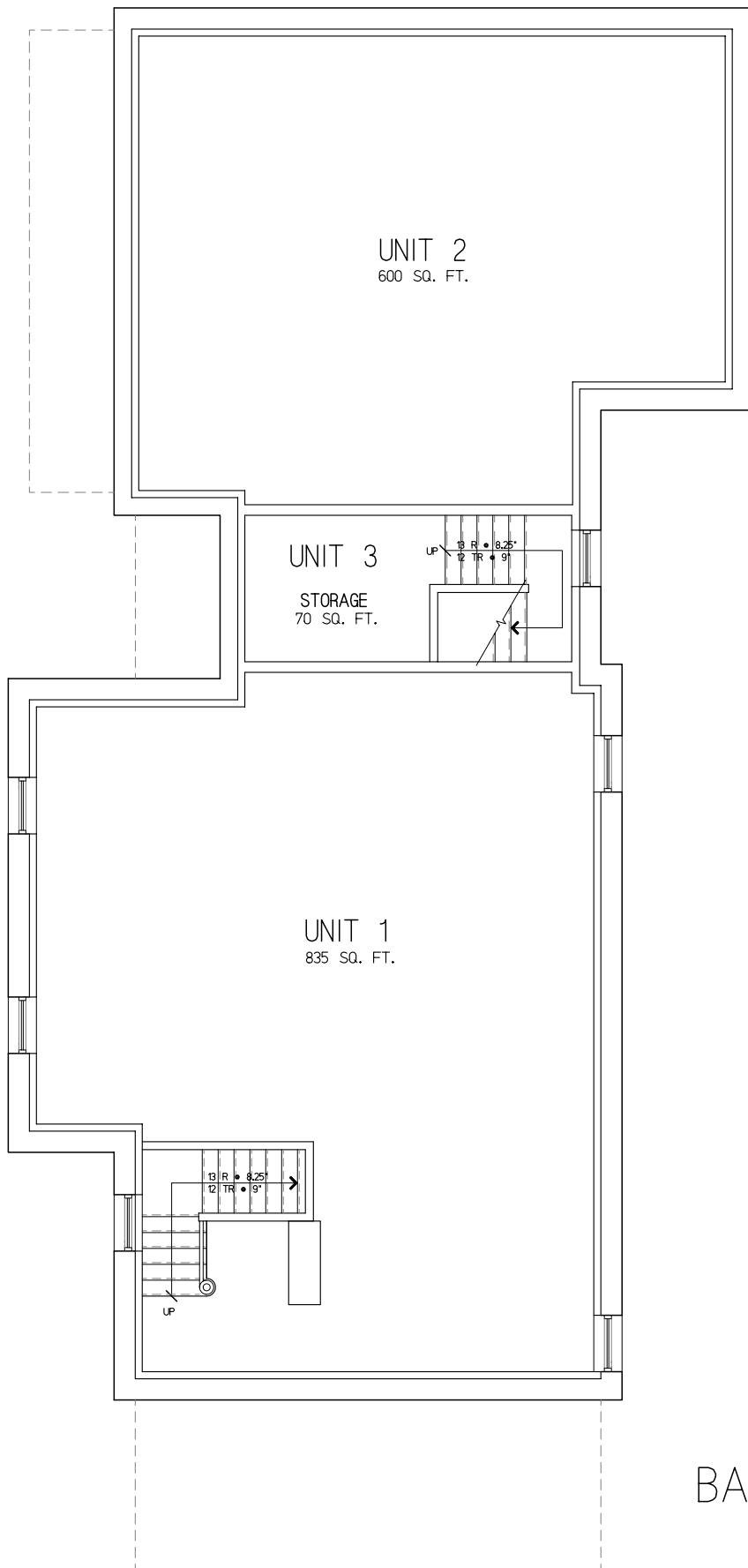


# Proposed Development for 38 Richardson Street, Newton, MA

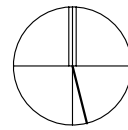
Scale: 1" = 50'

March 24, 2021

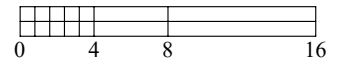
**Bourque Design**  
 Architectural Design from  
 Conception to Construction  
 Ron Bourque, Architect  
 AIA, NCARB, CS, LEED GA  
 rbourq@gmail.com  
 781-296-6654  
 Waltham, MA 02453



PROJECT NORTH



TRUE NORTH



UNIT SQUARE FOOTAGES

UNIT 1

BASEMENT LEVEL	835 S.F.
FIRST LEVEL	945 S.F.
<hr/>	
TOTAL	1,780 S.F.

UNIT 2

BASEMENT LEVEL	600 S.F.
FIRST LEVEL	680 S.F.
SECOND LEVEL	680 S.F.
<hr/>	
TOTAL	2,040 S.F.

UNIT 3

BASEMENT LEVEL	70 S.F.
SECOND LEVEL	1,060 S.F.
THIRD LEVEL	800 S.F.
<hr/>	
TOTAL	1,930 S.F.

TOTAL SQUARE FOOTAGE = 5,750

BASEMENT FLOOR PLAN

Proposed Development for  
38 Richardson Street, Newton, MA

Scale: 1/8" = 1'-0"

March 24, 2021

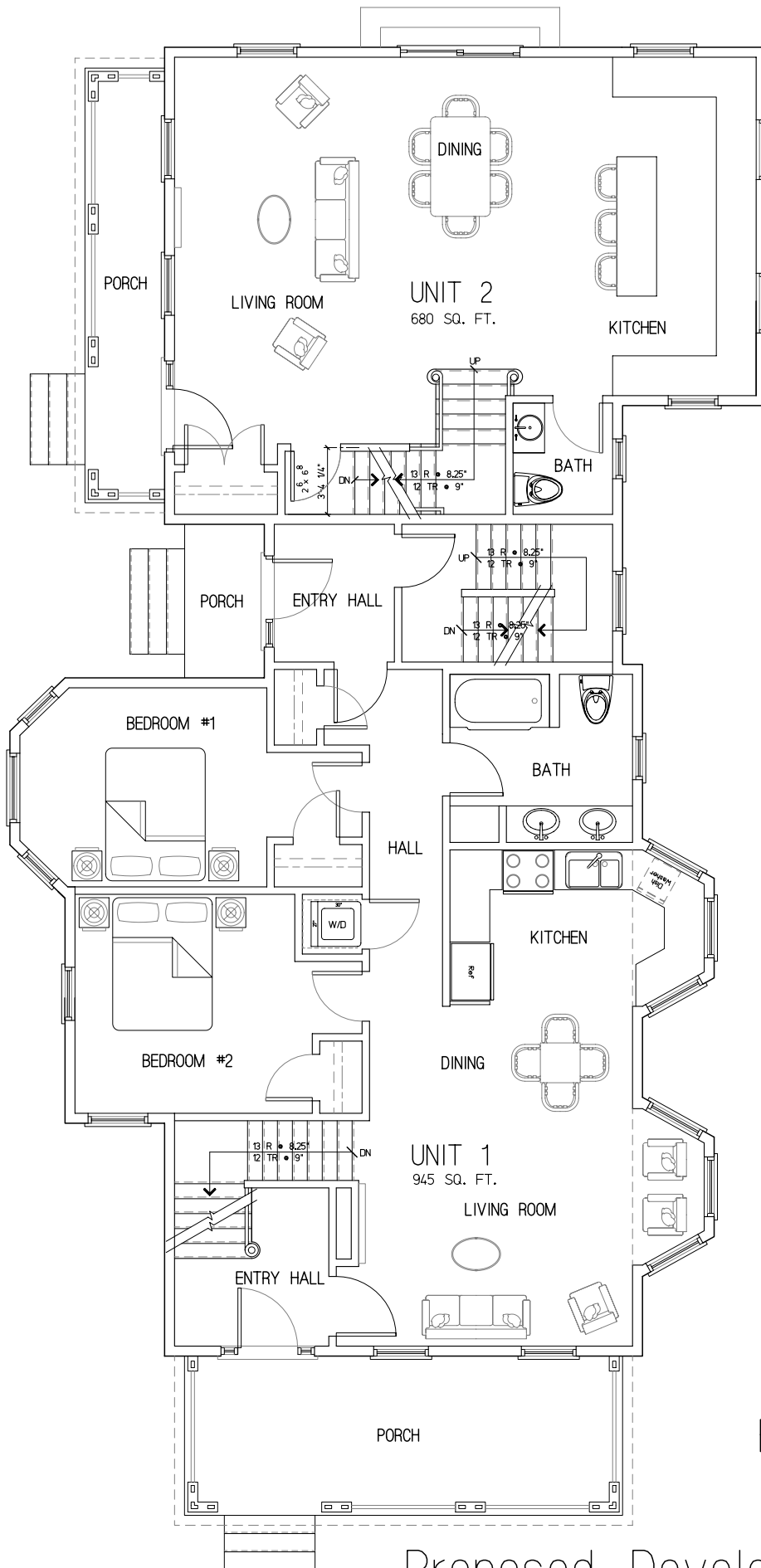


**Bourque Design**

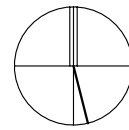
Architectural Design from  
Conception to Construction

Ron Bourque, Architect  
AIA, NCARB, CS, LEED GA

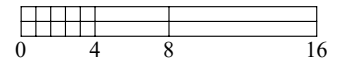
rbourq@gmail.com  
781-256-6654  
Waltham, MA 02453



PROJECT NORTH



TRUE NORTH



UNIT SQUARE FOOTAGES

UNIT 1

BASEMENT LEVEL	835 S.F.
FIRST LEVEL	945 S.F.
<b>TOTAL</b>	<b>1,780 S.F.</b>

UNIT 2

BASEMENT LEVEL	600 S.F.
FIRST LEVEL	680 S.F.
SECOND LEVEL	680 S.F.
<b>TOTAL</b>	<b>2,040 S.F.</b>

UNIT 3

BASEMENT LEVEL	70 S.F.
SECOND LEVEL	1,060 S.F.
THIRD LEVEL	800 S.F.
<b>TOTAL</b>	<b>1,930 S.F.</b>

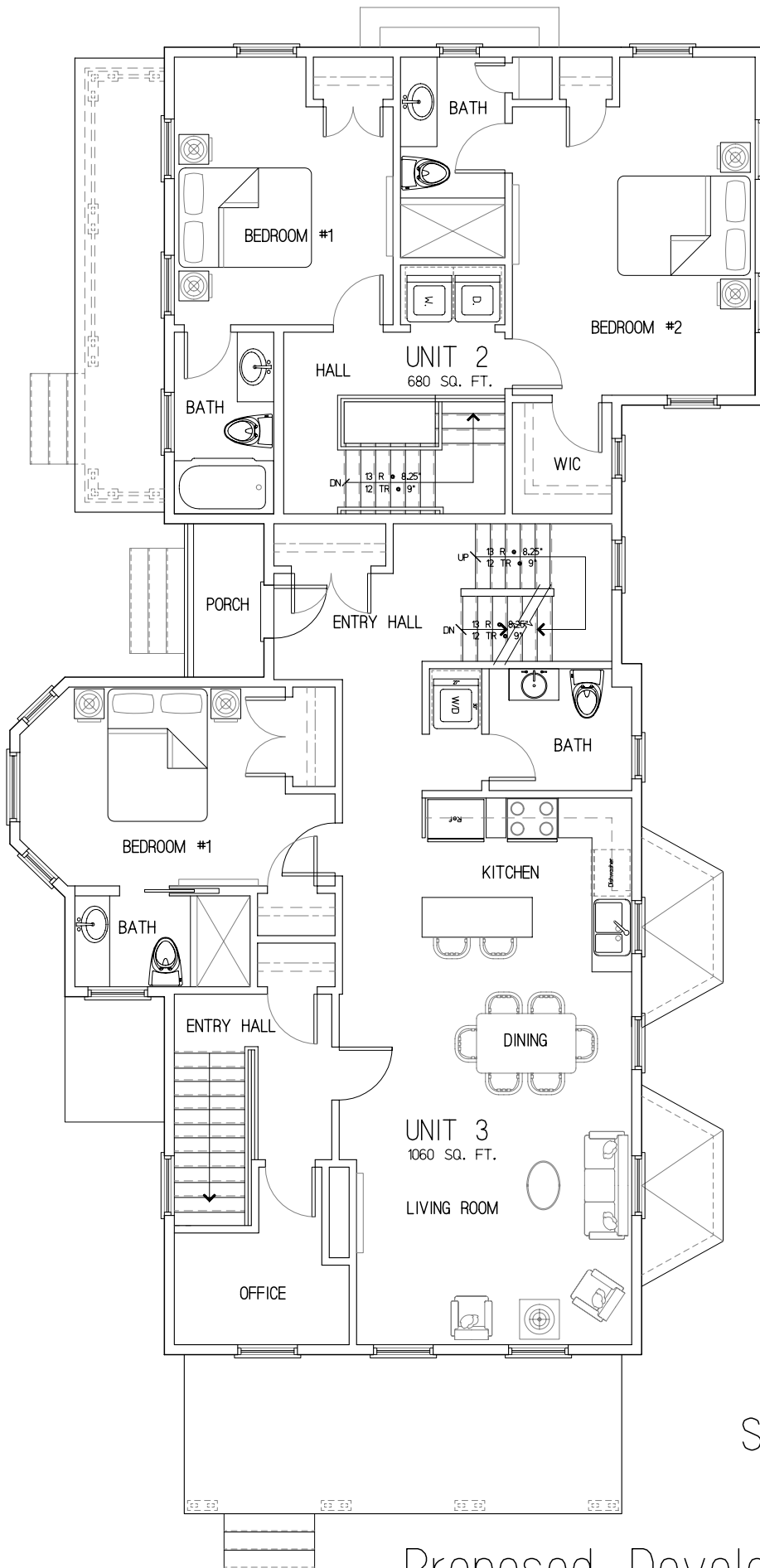
TOTAL SQUARE FOOTAGE = 5,750

FIRST FLOOR PLAN

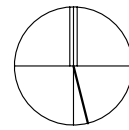
Proposed Development for  
38 Richardson Street, Newton, MA

Scale: 1/8" = 1'-0"

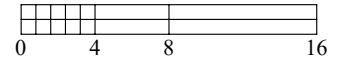
March 24, 2021



PROJECT NORTH



TRUE NORTH



UNIT SQUARE FOOTAGES

UNIT 1

BASEMENT LEVEL	835 S.F.
FIRST LEVEL	945 S.F.
<b>TOTAL</b>	<b>1,780 S.F.</b>

UNIT 2

BASEMENT LEVEL	600 S.F.
FIRST LEVEL	680 S.F.
SECOND LEVEL	680 S.F.
<b>TOTAL</b>	<b>2,040 S.F.</b>

UNIT 3

BASEMENT LEVEL	70 S.F.
SECOND LEVEL	1,060 S.F.
THIRD LEVEL	800 S.F.
<b>TOTAL</b>	<b>1,930 S.F.</b>

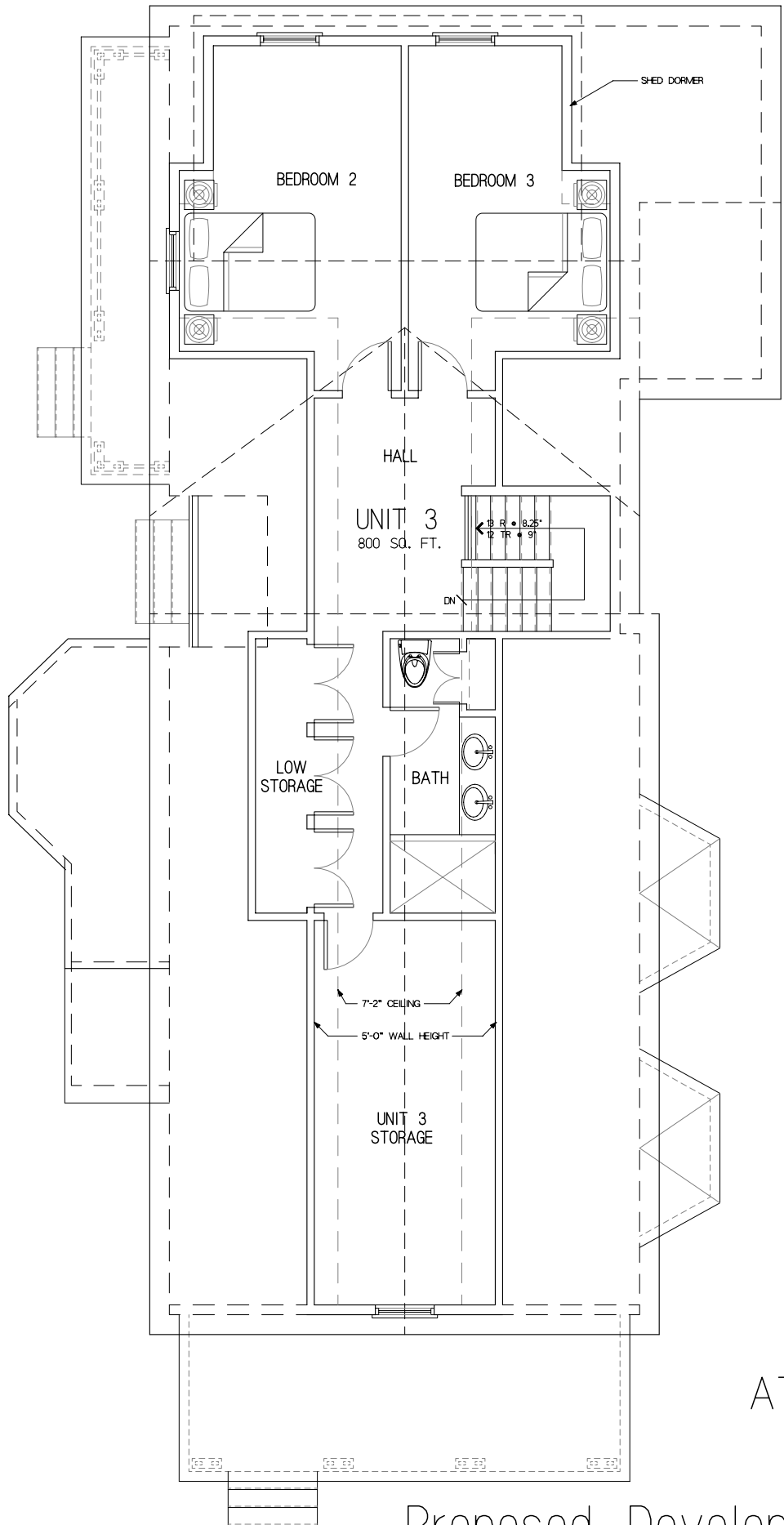
**TOTAL SQUARE FOOTAGE = 5,750**

SECOND FLOOR PLAN

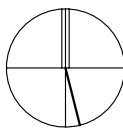
Proposed Development for  
38 Richardson Street, Newton, MA

Scale: 1/8" = 1'-0"

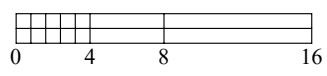
March 24, 2021



PROJECT NORTH



TRUE NORTH



UNIT SQUARE FOOTAGES

UNIT 1

BASEMENT LEVEL	835 S.F.
FIRST LEVEL	945 S.F.
<hr/>	
TOTAL	1,780 S.F.

UNIT 2

BASEMENT LEVEL	600 S.F.
FIRST LEVEL	680 S.F.
SECOND LEVEL	680 S.F.
<hr/>	
TOTAL	2,040 S.F.

UNIT 3

BASEMENT LEVEL	70 S.F.
SECOND LEVEL	1,060 S.F.
THIRD LEVEL	800 S.F.
<hr/>	
TOTAL	1,930 S.F.

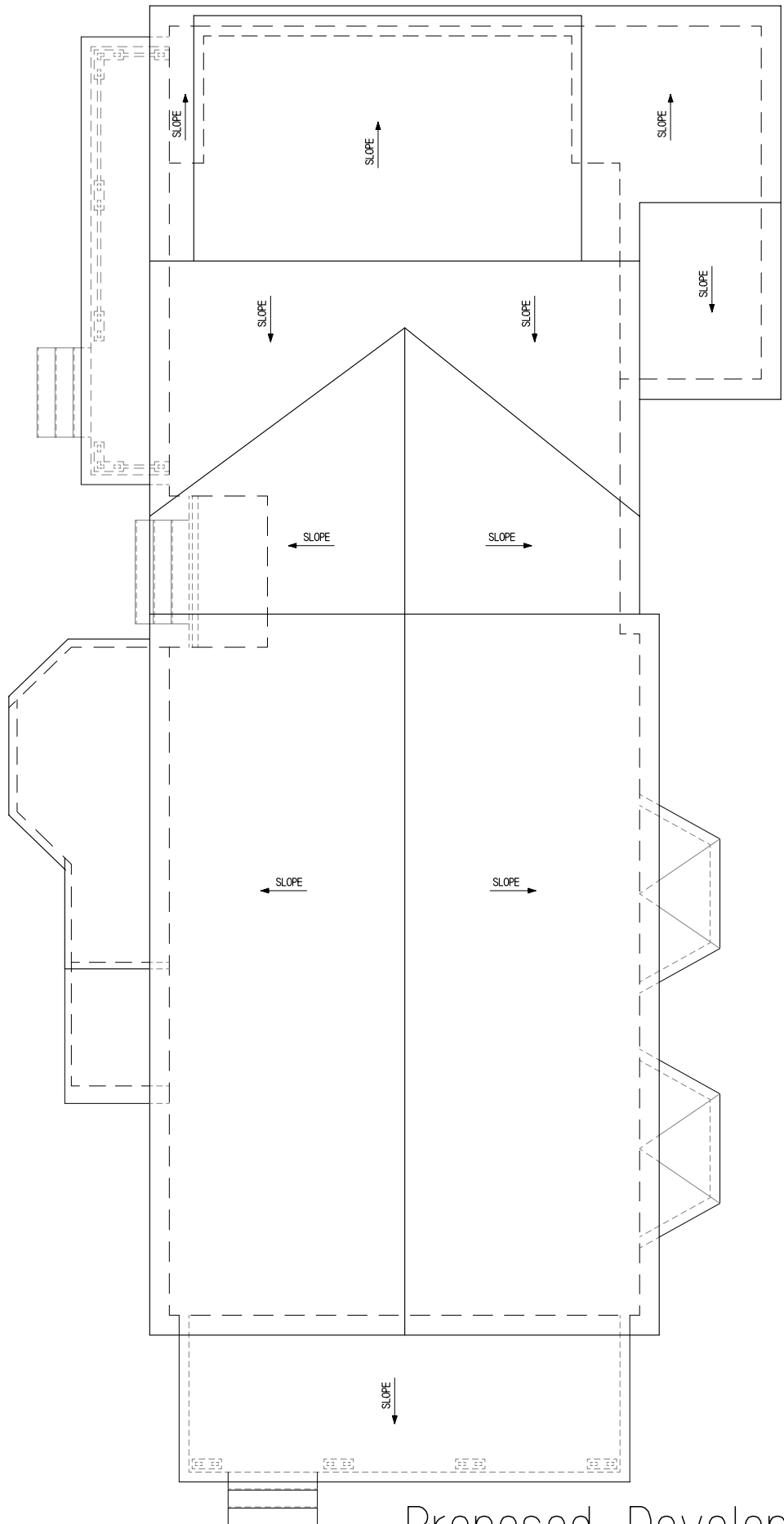
TOTAL SQUARE FOOTAGE = 5,750

ATTIC FLOOR PLAN

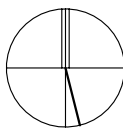
Proposed Development for  
38 Richardson Street, Newton, MA

Scale: 1/8" = 1'-0"

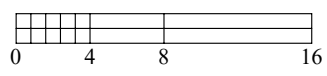
March 24, 2021



PROJECT NORTH



TRUE NORTH



UNIT SQUARE FOOTAGES

UNIT 1

BASEMENT LEVEL	835 S.F.
FIRST LEVEL	945 S.F.
<hr/>	
TOTAL	1,780 S.F.

UNIT 2

BASEMENT LEVEL	600 S.F.
FIRST LEVEL	680 S.F.
SECOND LEVEL	680 S.F.
<hr/>	
TOTAL	2,040 S.F.

UNIT 3

BASEMENT LEVEL	70 S.F.
SECOND LEVEL	1,060 S.F.
THIRD LEVEL	800 S.F.
<hr/>	
TOTAL	1,930 S.F.

TOTAL SQUARE FOOTAGE = 5,750

ROOF PLAN

Proposed Development for  
38 Richardson Street, Newton, MA

Scale: 1/8" = 1'-0"

March 24, 2021

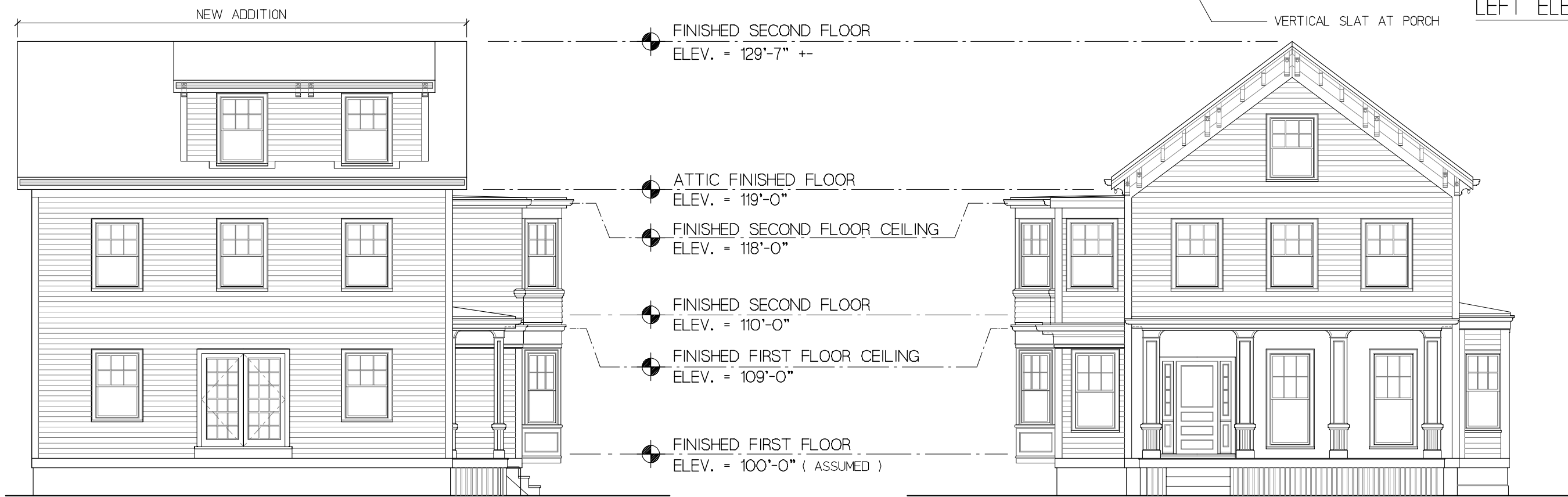


**Bourque Design**  
Architectural Design from  
Conception to Construction  
  
Ron Bourque, Architect  
AIA, NCARB, CS, LEED GA  
  
rbourq@gmail.com  
781-256-6654  
Waltham, MA 02453





LEFT ELEVATION



REAR ELEVATION

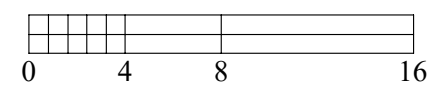
FRONT ELEVATION

# Proposed Development for 38 Richardson Street, Newton, MA

Scale: 1/8" = 1'-0"

March 24, 2021

**Bourque Design**  
 Architectural Design from  
 Conception to Construction  
 Ron Bourque, Architect  
 AIA, NCARB, CS, LEED GA  
 rbourq@gmail.com  
 781-296-6654  
 Waltham, MA 02453







**Bourque Design**

Architectural Design from  
Conception to Construction

Ron Bourque, Architect  
AIA, NCARB, CS, LEED GA

rbourq@gmail.com  
781-296-6654  
Waltham, MA 02453

Proposed Development for  
38 Richardson Street, Newton, MA

Scale: 1/8" = 1'-0"

March 24, 2021

