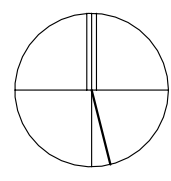
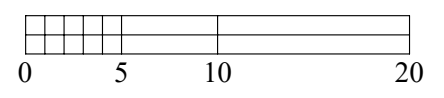


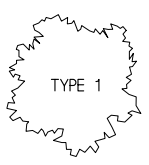
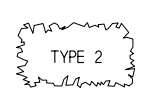
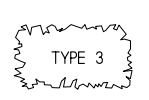
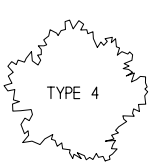

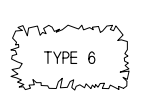
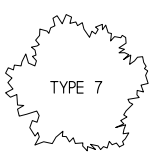
PROJECT NORTH



TRUE NORTH



LEGEND

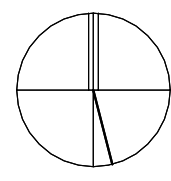
- TYPE 1 - MAPLE 
- TYPE 2 - YEW 
- TYPE 3 - BOXWOOD 
- TYPE 4 - DOGWOOD 
- TYPE 5 - DWARF SPRUCE 
- TYPE 6 - YEW 
- TYPE 7 - AMERICAN RED MAPLE 



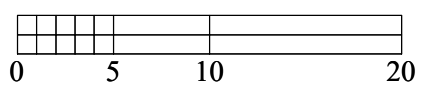
Proposed Development for
 38 Richardson Street, Newton, MA
 Scale: 1" = 50'
 March 24, 2021



PROJECT NORTH



TRUE NORTH

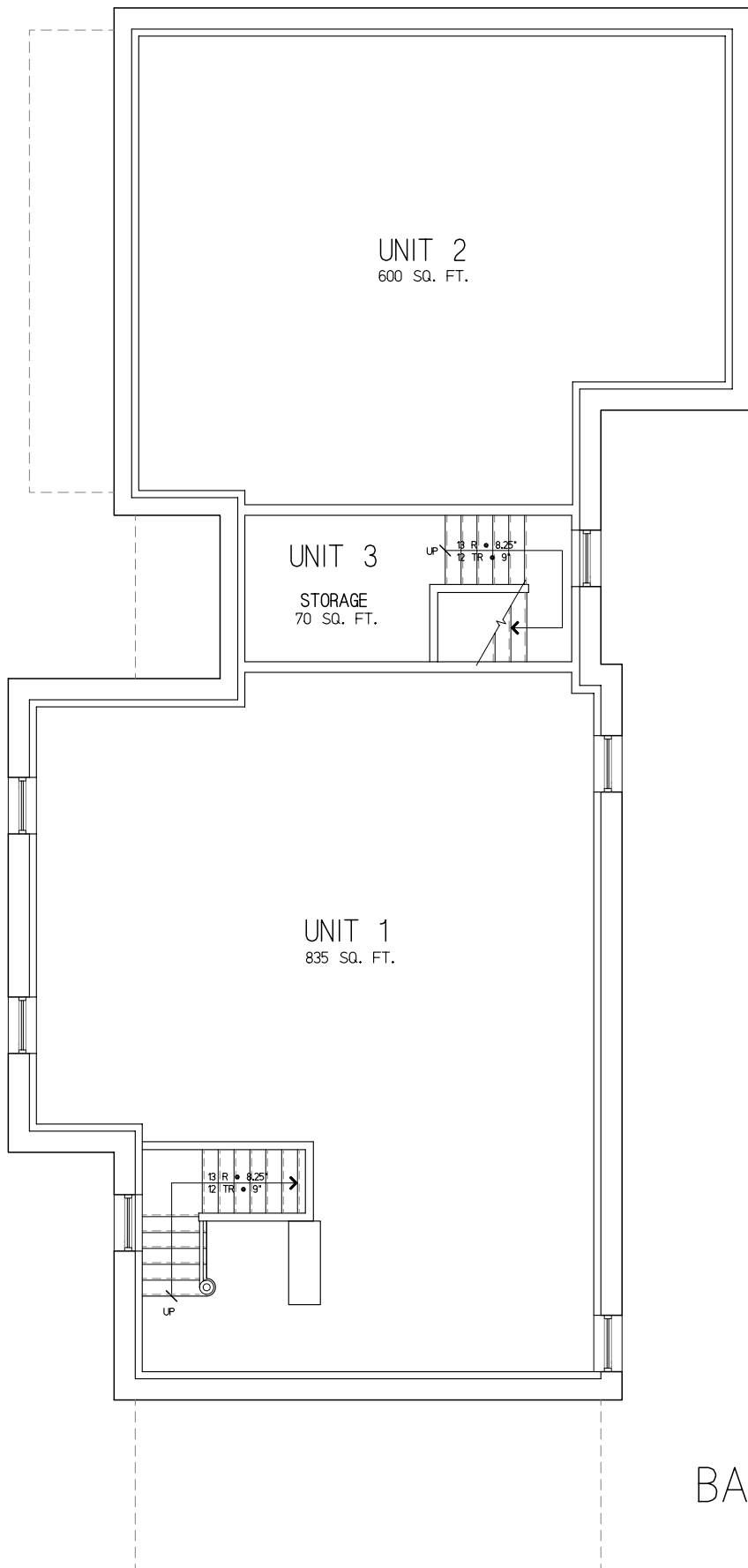


LEGEND

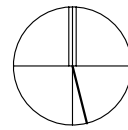
EXISTING BUILDING		2,550 S.F.
EXISTING PORCH		175 S.F.
AREA TO BE DEMOLISHED		75 S.F.
NEW ADDITION		200 S.F.
NEW PORCH ADDITION		120 S.F.
PATIO		457 S.F.
ASPHALT PAVING		1,600 S.F.
PERVIOUS PAVING		1,250 S.F.
STONE WALKWAY		150 S.F.



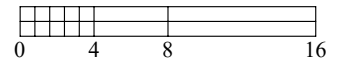
Proposed Development for
 38 Richardson Street, Newton, MA
 Scale: 1" = 50'
 March 24, 2021



PROJECT NORTH



TRUE NORTH



UNIT SQUARE FOOTAGES

UNIT 1

BASEMENT LEVEL	835 S.F.
FIRST LEVEL	945 S.F.
TOTAL	1,780 S.F.

UNIT 2

BASEMENT LEVEL	600 S.F.
FIRST LEVEL	680 S.F.
SECOND LEVEL	680 S.F.
TOTAL	2,040 S.F.

UNIT 3

BASEMENT LEVEL	70 S.F.
SECOND LEVEL	1,060 S.F.
THIRD LEVEL	800 S.F.
TOTAL	1,930 S.F.

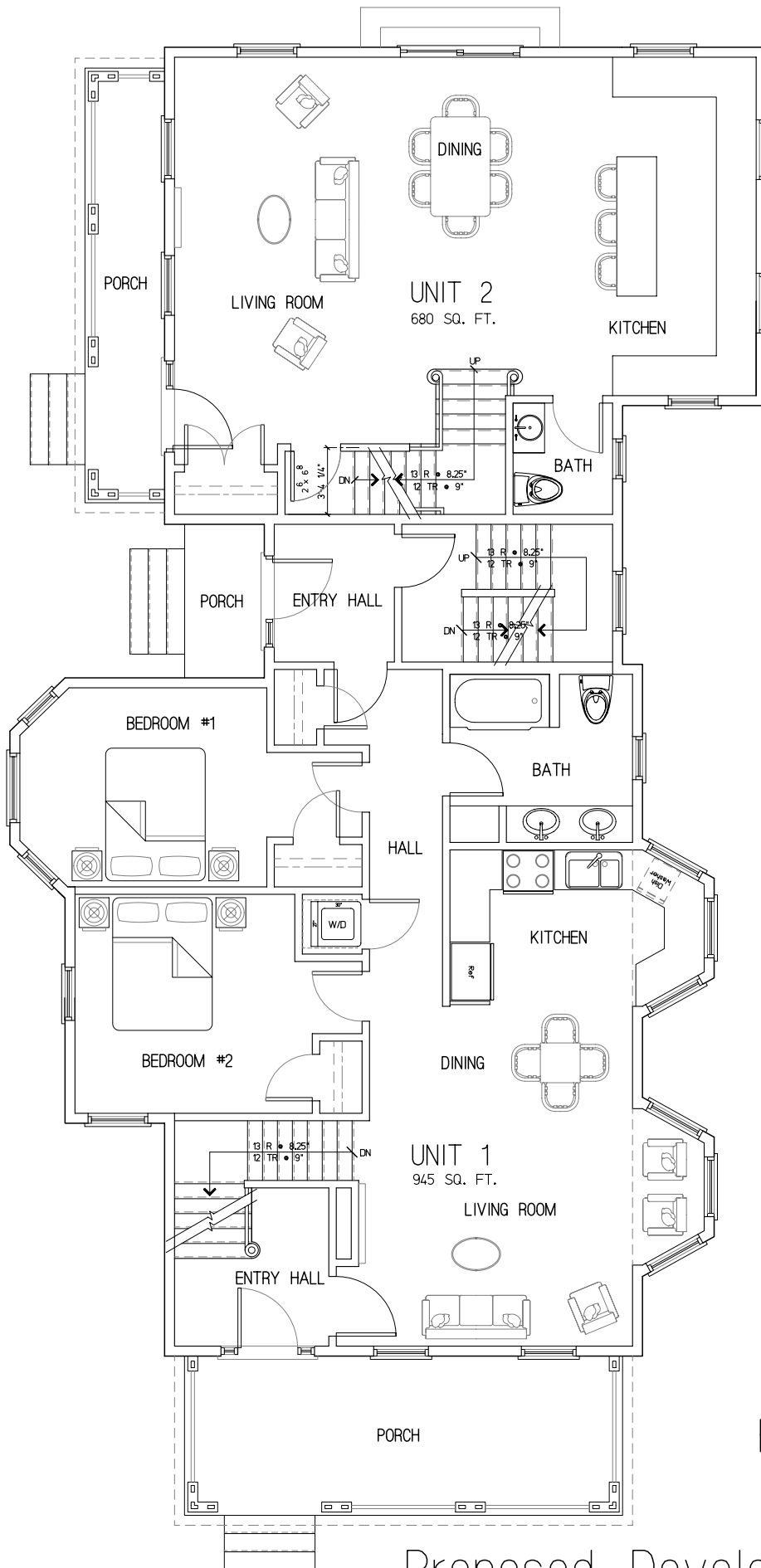
TOTAL SQUARE FOOTAGE = 5,750

BASEMENT FLOOR PLAN

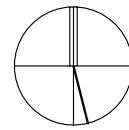
Proposed Development for
38 Richardson Street, Newton, MA

Scale: 1/8" = 1'-0"

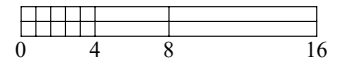
March 24, 2021



PROJECT NORTH



TRUE NORTH



UNIT SQUARE FOOTAGES

UNIT 1

BASEMENT LEVEL	835 S.F.
FIRST LEVEL	945 S.F.
TOTAL	1,780 S.F.

UNIT 2

BASEMENT LEVEL	600 S.F.
FIRST LEVEL	680 S.F.
SECOND LEVEL	680 S.F.
TOTAL	2,040 S.F.

UNIT 3

BASEMENT LEVEL	70 S.F.
SECOND LEVEL	1,060 S.F.
THIRD LEVEL	800 S.F.
TOTAL	1,930 S.F.

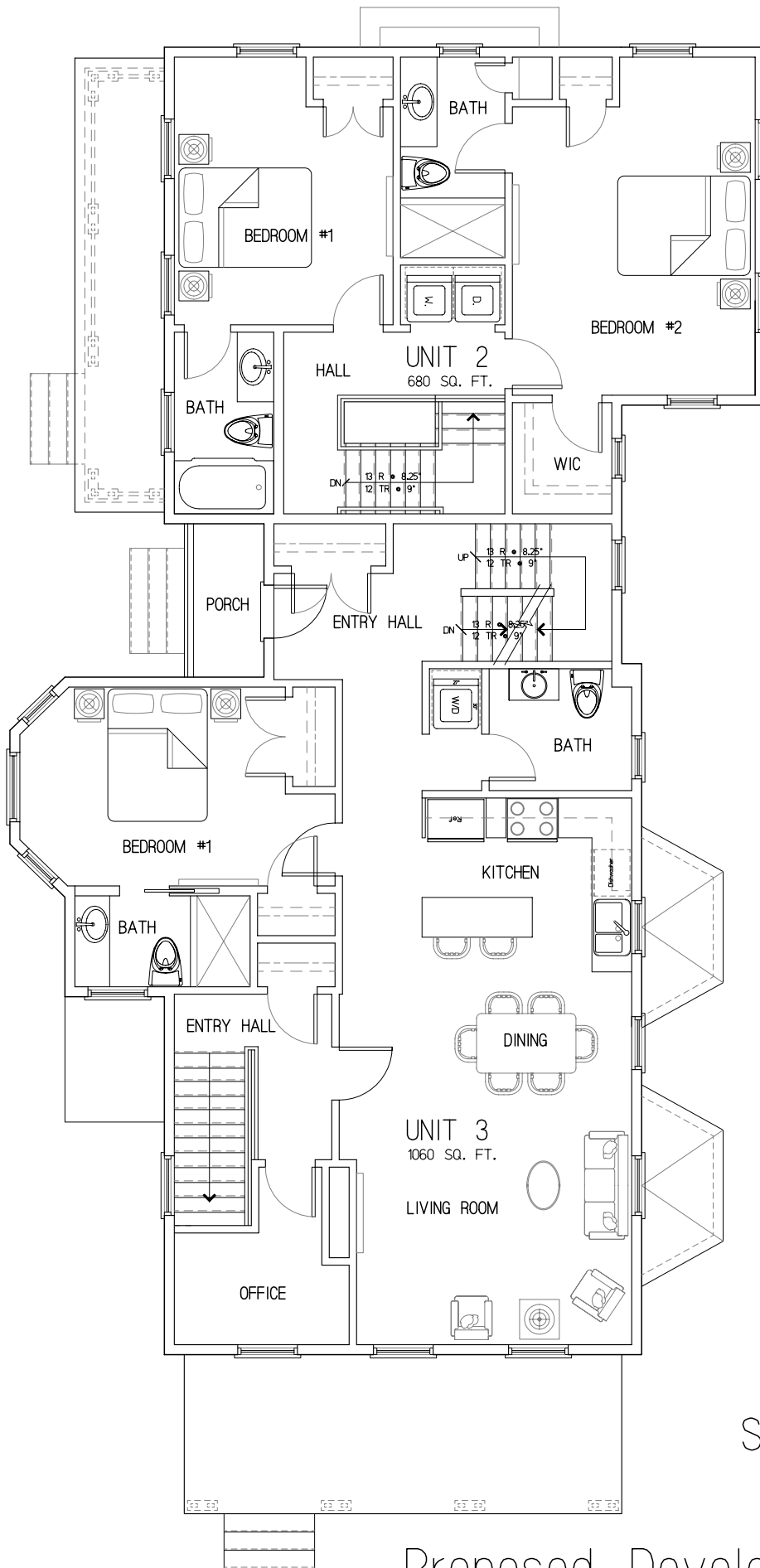
TOTAL SQUARE FOOTAGE = 5,750

FIRST FLOOR PLAN

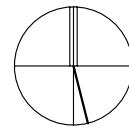
Proposed Development for
38 Richardson Street, Newton, MA

Scale: 1/8" = 1'-0"

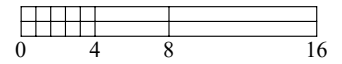
March 24, 2021



PROJECT NORTH



TRUE NORTH



UNIT SQUARE FOOTAGES

UNIT 1

BASEMENT LEVEL	835 S.F.
FIRST LEVEL	945 S.F.
TOTAL	1,780 S.F.

UNIT 2

BASEMENT LEVEL	600 S.F.
FIRST LEVEL	680 S.F.
SECOND LEVEL	680 S.F.
TOTAL	2,040 S.F.

UNIT 3

BASEMENT LEVEL	70 S.F.
SECOND LEVEL	1,060 S.F.
THIRD LEVEL	800 S.F.
TOTAL	1,930 S.F.

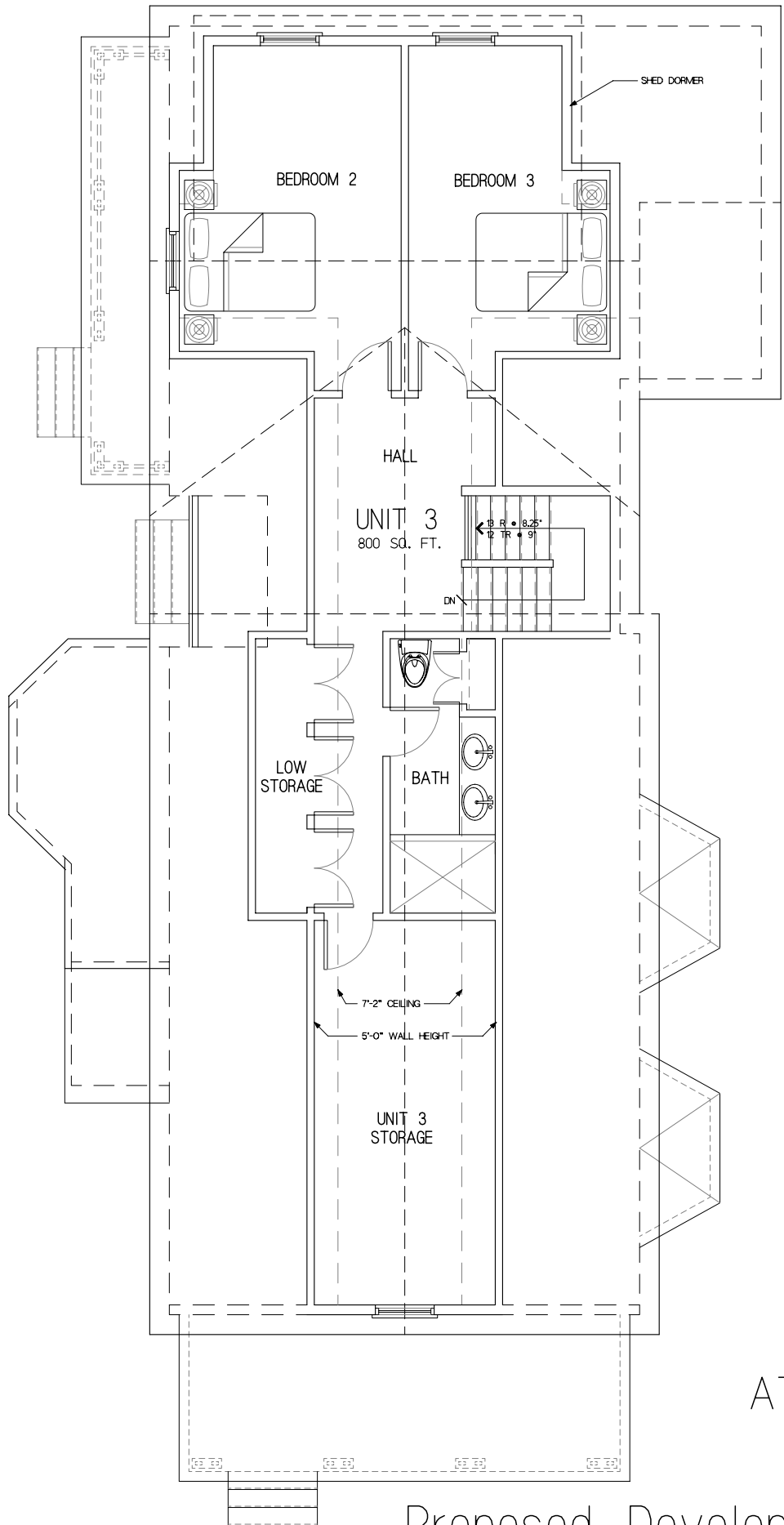
TOTAL SQUARE FOOTAGE = 5,750

SECOND FLOOR PLAN

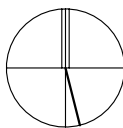
Proposed Development for
38 Richardson Street, Newton, MA

Scale: 1/8" = 1'-0"

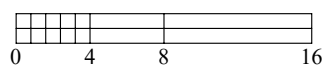
March 24, 2021



PROJECT NORTH



TRUE NORTH



UNIT SQUARE FOOTAGES

UNIT 1

BASEMENT LEVEL	835 S.F.
FIRST LEVEL	945 S.F.
<hr/>	
TOTAL	1,780 S.F.

UNIT 2

BASEMENT LEVEL	600 S.F.
FIRST LEVEL	680 S.F.
SECOND LEVEL	680 S.F.
<hr/>	
TOTAL	2,040 S.F.

UNIT 3

BASEMENT LEVEL	70 S.F.
SECOND LEVEL	1,060 S.F.
THIRD LEVEL	800 S.F.
<hr/>	
TOTAL	1,930 S.F.

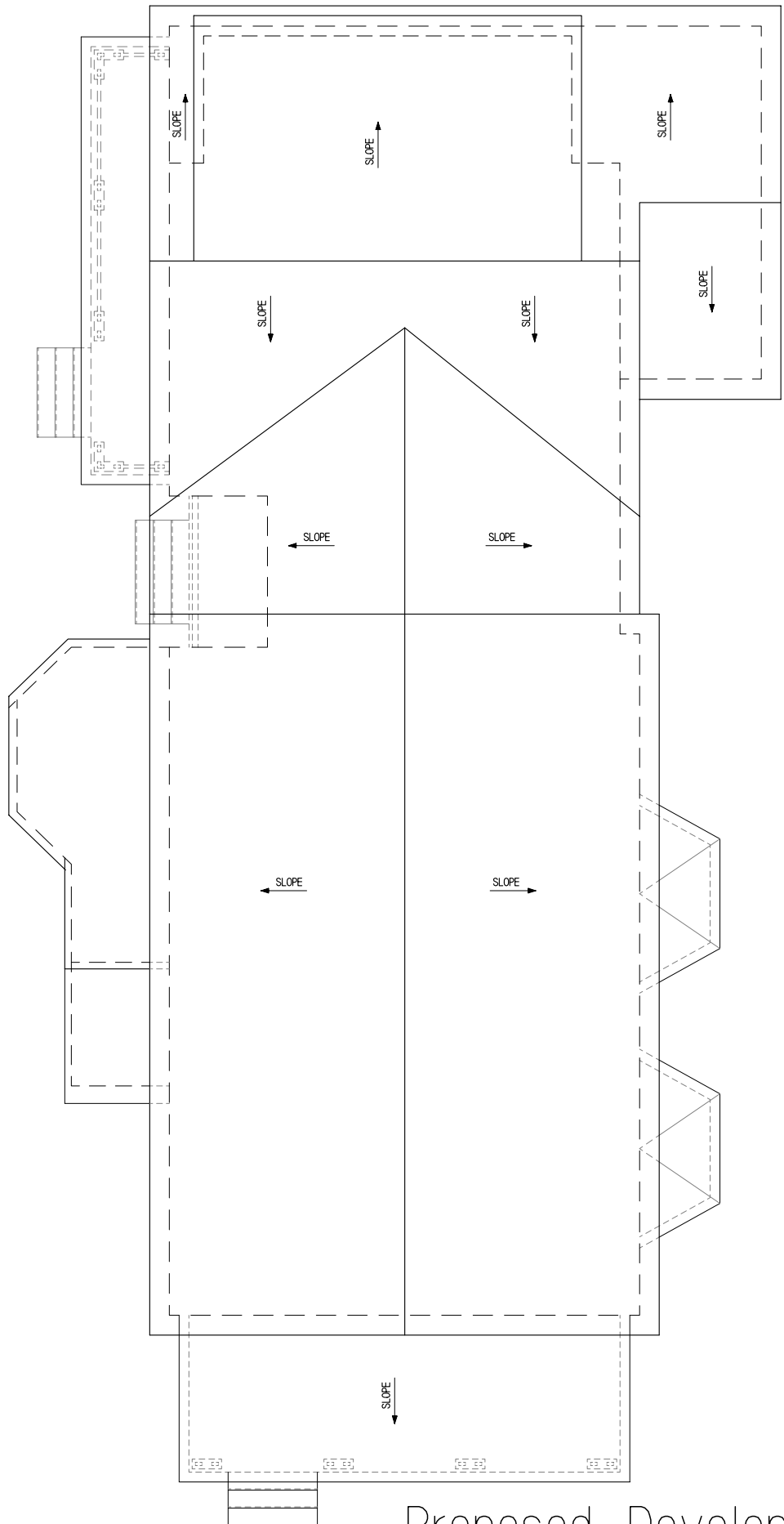
TOTAL SQUARE FOOTAGE = 5,750

ATTIC FLOOR PLAN

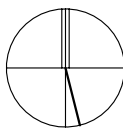
Proposed Development for
38 Richardson Street, Newton, MA

Scale: 1/8" = 1'-0"

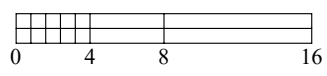
March 24, 2021



PROJECT NORTH



TRUE NORTH



UNIT SQUARE FOOTAGES

UNIT 1

BASEMENT LEVEL	835 S.F.
FIRST LEVEL	945 S.F.
TOTAL	1,780 S.F.

UNIT 2

BASEMENT LEVEL	600 S.F.
FIRST LEVEL	680 S.F.
SECOND LEVEL	680 S.F.
TOTAL	2,040 S.F.

UNIT 3

BASEMENT LEVEL	70 S.F.
SECOND LEVEL	1,060 S.F.
THIRD LEVEL	800 S.F.
TOTAL	1,930 S.F.

TOTAL SQUARE FOOTAGE = 5,750

ROOF PLAN

Proposed Development for
38 Richardson Street, Newton, MA

Scale: 1/8" = 1'-0"

March 24, 2021

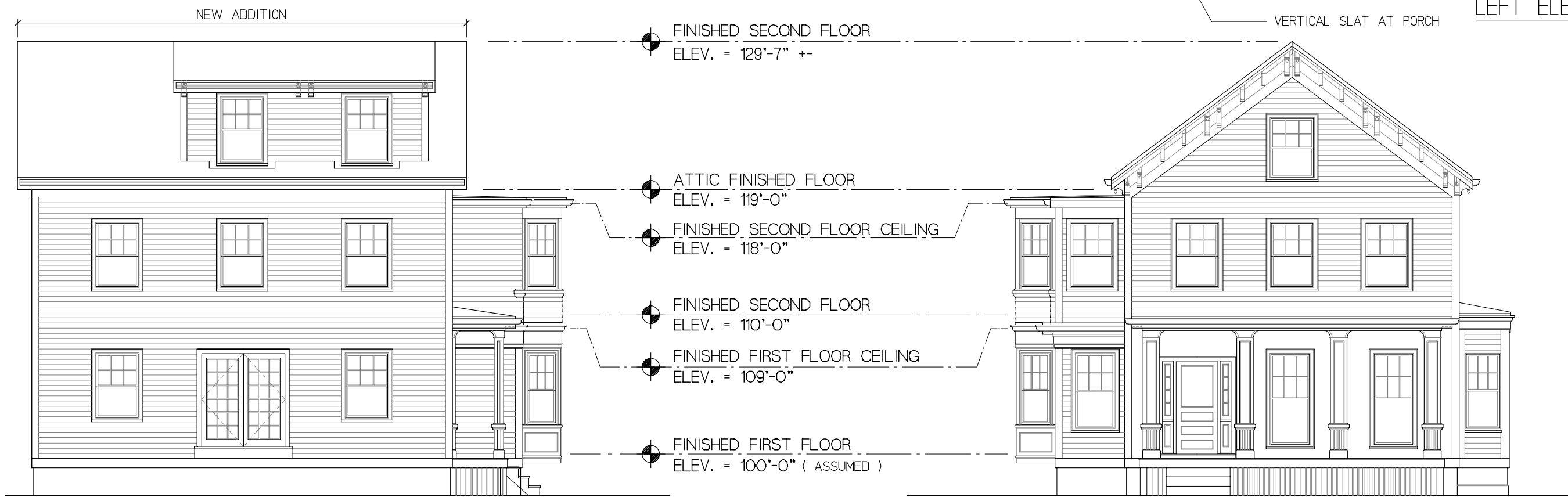


Bourque Design
Architectural Design from
Conception to Construction

Ron Bourque, Architect
AIA, NCARB, CS, LEED GA
rbourq@gmail.com
781-256-6654
Waltham, MA 02453



LEFT ELEVATION



REAR ELEVATION

FRONT ELEVATION

Proposed Development for 38 Richardson Street, Newton, MA

Scale: 1/8" = 1'-0"

March 24, 2021

Bourque Design
 Architectural Design from
 Conception to Construction
 Ron Bourque, Architect
 AIA, NCARB, CS, LEED GA
 rbourq@gmail.com
 781-296-6654
 Waltham, MA 02453





Bourque Design

Architectural Design from
Conception to Construction

Ron Bourque, Architect
AIA, NCARB, CS, LEED GA

rbourq@gmail.com
781-296-6654
Waltham, MA 02453

Proposed Development for
38 Richardson Street, Newton, MA

Scale: 1/8" = 1'-0"

March 24, 2021

