

# Vaccinating a Community: A Collaboration of Public Health and School Health



**RUTH HOSHINO, RN, BSN & TERESA KETT, MPH**  
NEWTON, MASSACHUSETTS HEALTH & HUMAN  
SERVICES

**JULY 24, 2012**  
PUBLIC HEALTH NURSING WEBINAR

# Proper Phone & Webinar Etiquette



- All attendee telephones will be muted
- We'll leave time at the end for Q&A
- If you have a question for the presenters:
  - Type it in the lower field of the [Chat Window](#)
  - Click on the down arrow to the right and select “Start chat with presenters”
  - Hit the Enter button to send your question
- Please refrain from sending messages to all “attendees” during the presentation.
- Questions will be answered at the end of the session in the order they are received.

# Participant Demographic Information



When you have logged into the webinar system there will appear a window labeled “**Info About You**”. Place your cursor in the field in the lower part of this window and on one line please type in your **first and last name, occupation, city, State, and email address** then hit Enter.

# Acknowledgements



- New England Alliance for Public Health Workforce Development
- Boston University School of Public Health
- Massachusetts Association of Public Health Nurses (MAPHN)

# Acknowledgements



- New England Alliance for Public Health Workforce Development
- Boston University School of Public Health
- Massachusetts Association of Public Health Nurses (MAPHN)

# Accrediting Statements



The MAPHN is an approved educational provider by the American Nurses Credentialing Center (ANCC) and the Massachusetts Association of Registered Nurses (MARN).

MAPHN will issue 1.0 nursing contact hour for this program which will expire 30 days following the live session.

# How to Obtain Nursing Continuing Education Credit



- Please visit: [www.maphn.org/webinars](http://www.maphn.org/webinars)
- Click on the "Evaluation Forms" link which will take you to the evaluation form in Survey Monkey
- Fill out your evaluation in Survey Monkey and at the end there will be instructions to “click here” to get your CE Certificate. Click to open up your certificate first and then submit your evaluation.
- Thank you!

Questions please email: [educationchair@maphn.org](mailto:educationchair@maphn.org)

# Continuing Education Disclaimer



In compliance with continuing education requirements, all presenters must disclose any financial or other relationships (a) with the manufacturer(s) of commercial product(s) and/or of provider(s) of commercial services discussed in the educational presentation and (b) with any commercial supporters of the activity.

The presenter wishes to disclose he/she has no financial interest or other relationship with the manufacturer(s) of commercial products, suppliers of commercial services, or commercial supporters. There is no commercial support.



# Vaccinating a Community: A Collaboration of Public Health and School Health



**RUTH HOSHINO, RN, BSN & TERESA KETT, MPH**  
NEWTON, MASSACHUSETTS HEALTH & HUMAN  
SERVICES

**JULY 24, 2012**  
PUBLIC HEALTH NURSING WEBINAR

# Learning Objectives



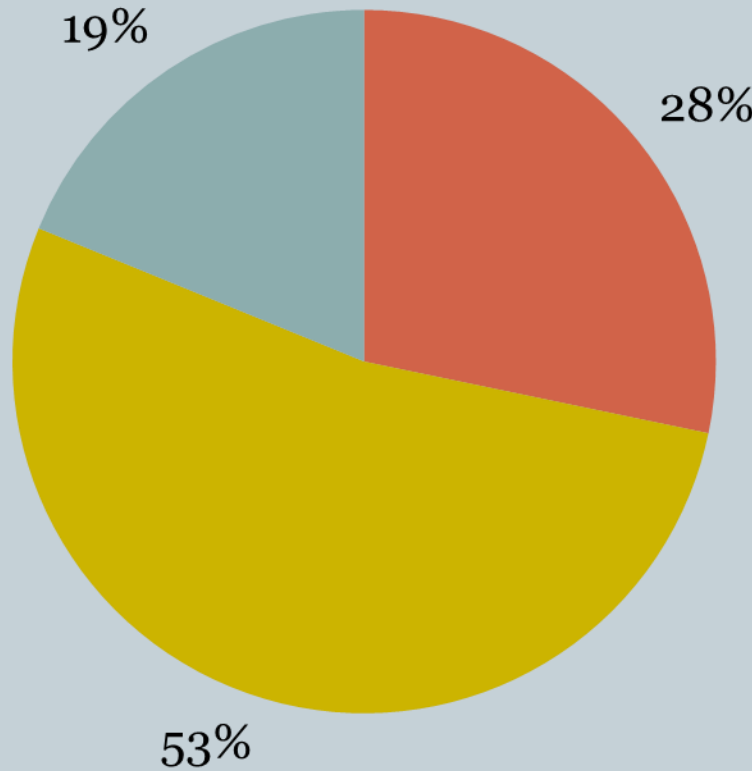
- Explain at least two tips for **working collaboratively** with your local health or school department to provide flu immunizations during the school day to students.
- Describe three ways to **minimize disruption of regular duties** for health and school department staff members when providing flu immunizations during the school day to students.
- List three **nursing best practices** for administration of **flu vaccine** to students during the school day.

# Background



- MA has 351 cities/towns
- Unique program setup: Newton, MA local HHS
- 12,000 students, 22 school buildings, Preschool to Grade 12
- 25 nurses, 3 health assistants, school nurse supervisor, plus additional support staff
- Jumped into school-based vaccination Fall 2008 using commercial vaccinator
- Program evolved due to state-supplied vaccine and School/Newton HHS department commitment
- MA Department of Public Health provides flu vaccine for children

# Big Picture Flu Vaccination in Newton, MA



**5,342 flu vaccines  
provided in 2011-12**

- Employees
- Students @ School
- Community

# School-Based Program Timeline

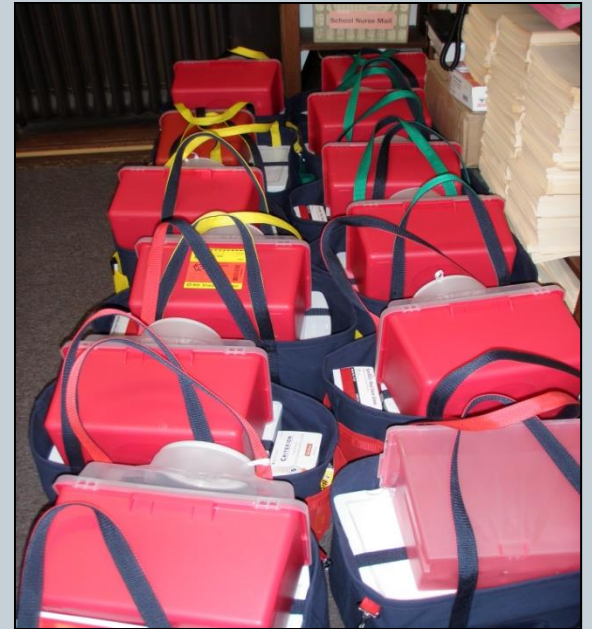


- **June**
  - Final newsletter message mentions flu vaccine program
- **August/September**
  - Prepare forms & get translations
  - Establish calendar
  - Distribute forms electronically to parents
- **October**
  - Clinics run over roughly four weeks
- **November/December**
  - Opportunity for makeup at community clinics
  - Insurance reimbursement

# Logistics



- Communication
- Scheduling
- Staffing
- Supplies
- Record Keeping
- Insurance Reimbursement



# Nurse's Role



- Lead person in each school for students, parents and staff
- Determines location and date with Principal
- Manages communication to families, staff and providers
- Receives, organizes and screens student forms
- Responds to inquiries both logistical and clinical
- Develops a clinic plan
- Manages post-clinic paperwork

# Just in Time Training



- Provides consistency across clinics
- Team Leader conducts for all staff
- Content
  - Introductions
  - Clinical
  - Vaccine
  - Documentation
  - Other



# Flu Bag Contents



- **Clinical bags, 1 per station**
- Drawer 1: table cover, trash bag, masking tape, tissues, emergency epi & orders
- Drawer 2: alcohol wipes, gauze, bandages, stickers
- Drawer 3: needles and syringes
- In bag: hand sanitizer, pens, sharps container, gloves
- **Clerical bag, 1 per site**
- Employee forms, employee sign, pens, date stamp, sample student forms, extra blank student forms, reporting form, standing orders, lot number labels, extra dots, sample nasal spray



# Helpful Hints



- Vaccinate staff to establish goodwill for the “interruption.”
- Vaccinate anywhere BUT the health room.
- One form, but use colored dots/highlights to differentiate.
- Establish consistency and require nurses to stick to it.

# Helpful Hints



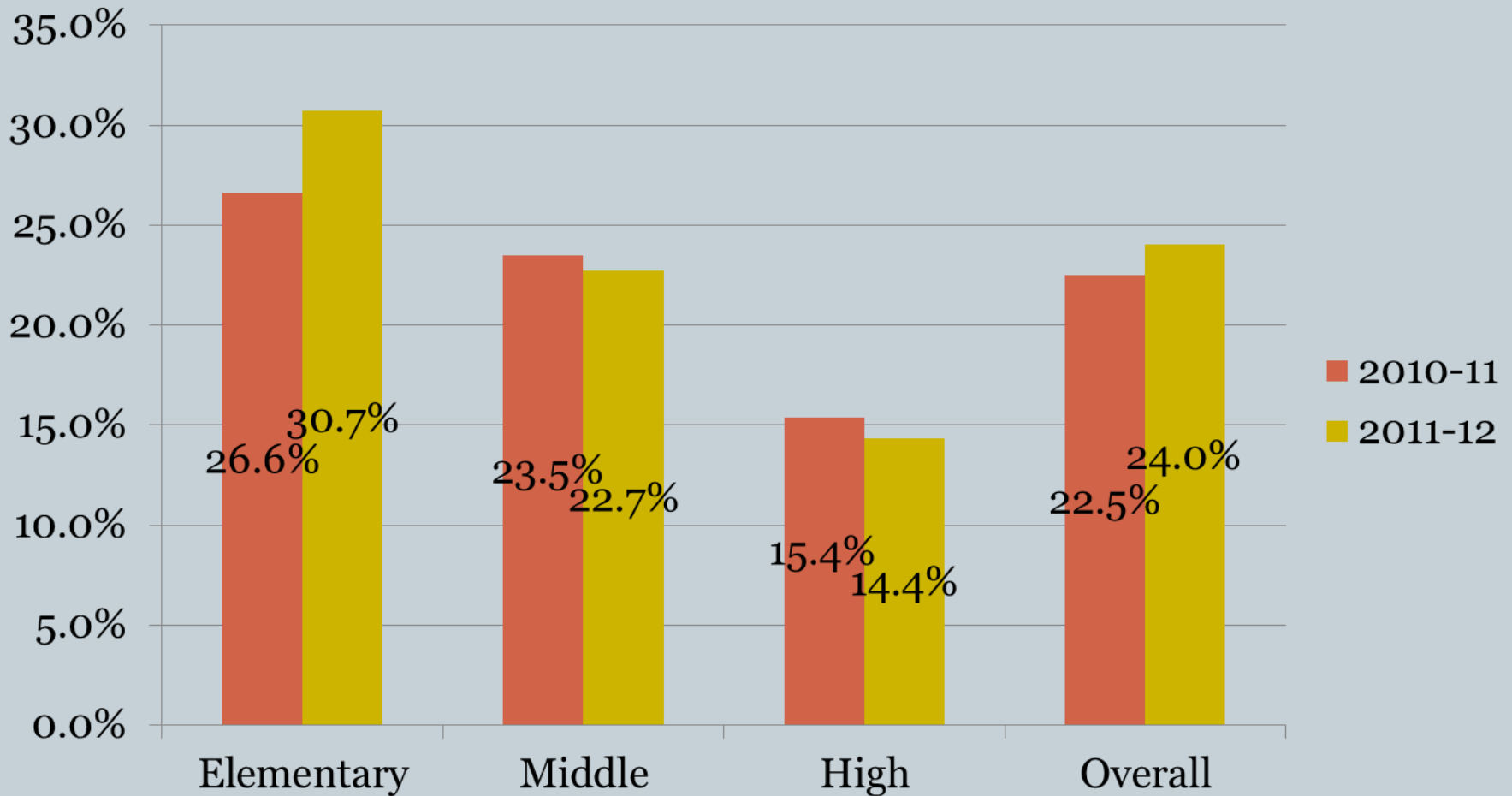
- Prevent students from watching each other.
- Listen to the student to prevent errors.
- Parents may come before or after but not during the clinic.
- Vaccinate challenging students without classmates around.

# Helpful Hints

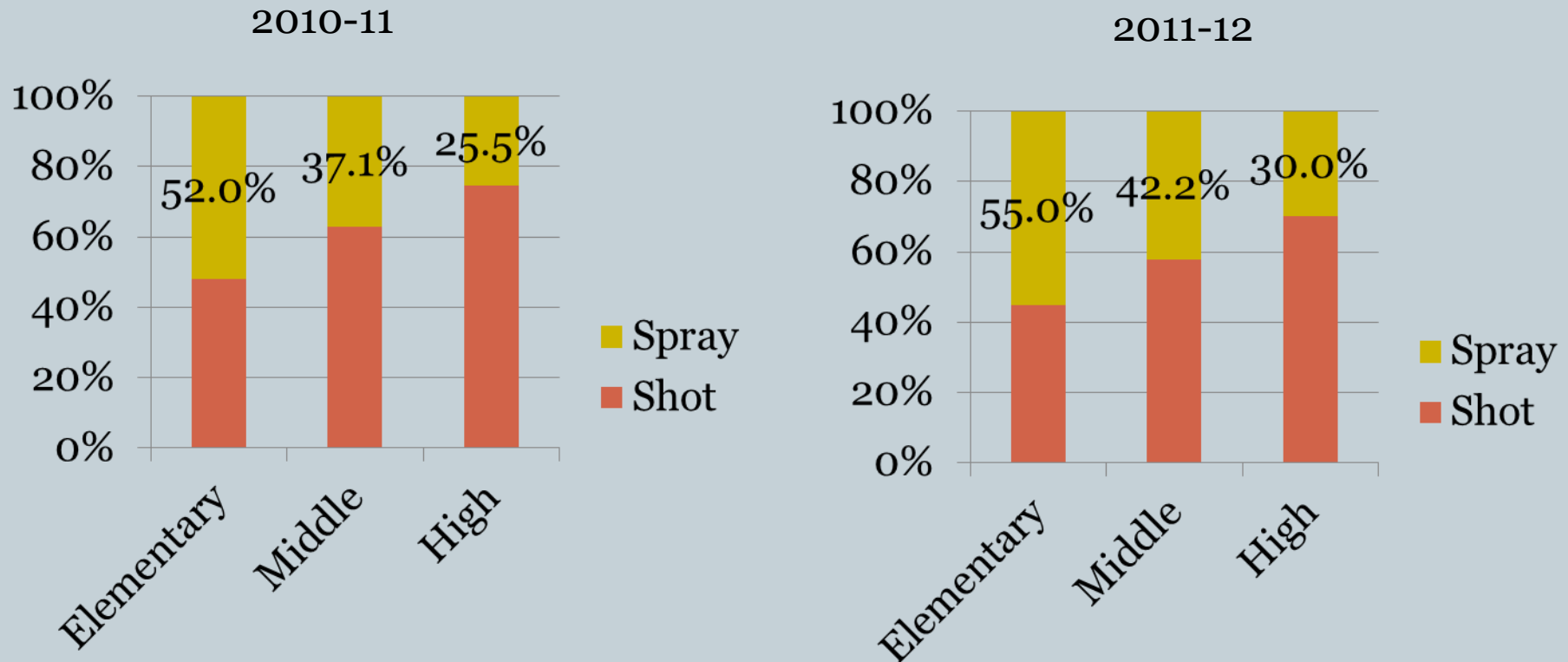


- Don't negotiate, coerce, bargain or let the student run the show. Vaccinate ASAP.
- Fun bandages and stickers are vital for ALL ages.
- Realize there will always be a few who refuse, and that's ok.
- Minimize written documentation for vaccinators.
- Avoid flu clinic fatigue—repack and wait a day to refresh.

# School Participation 2010-11 vs. 2011-12



# Flu Shot vs. Spray/Mist



Vaccine formulation chosen among those vaccinated at school.

# Challenges



- Getting documentation to health care providers
- Balancing need for on-time forms with desire to vaccinate all
- Reaching out to non-public school students
- Staffing
- Increasing vaccination rate, not decreasing among middle/high school students
- Reimbursement paperwork
- Branding as “THE” place for most kids to get their flu vaccines

# Looking Ahead



- Increase vaccination rate
- Target specific populations within the school community
- Branding



# Resources



- Please check online for some of our documents:
  - [www.newtonma.gov/flu](http://www.newtonma.gov/flu) (scroll to bottom)
  - Parent letter, hospital letter, just in time training outline, clerk duties, clinic location guidelines, calendar, reporting form
- MDPH Immunization Resources
  - <http://www.mass.gov/eohhs/provider/guidelines-resources/clinical-treatment/diseases-conditions/immunization/>

# Questions and Answers



# Acknowledgements



- New England Alliance for Public Health Workforce Development
- Boston University School of Public Health
- Massachusetts Association of Public Health Nurses (MAPHN)

# Participant Demographic Information



When you have logged into the webinar system there will appear a window labeled “**Info About You**”. Place your cursor in the field in the lower part of this window and on one line please type in your **first and last name, occupation, city, State, and email address** then hit Enter.

# How to Obtain Nursing Continuing Education Credit



- Please visit: [www.maphn.org/webinars](http://www.maphn.org/webinars)
- Click on the "Evaluation Forms" link which will take you to the evaluation form in Survey Monkey
- Fill out your evaluation in Survey Monkey and at the end there will be instructions to “click here” to get your CE Certificate. Click to open up your certificate first and then submit your evaluation.
- Thank you!

Questions please email: [educationchair@maphn.org](mailto:educationchair@maphn.org)

# Links to PHN webinar archives



- The link to the archives **and** the PP slides are available at [http://sph.bu.edu/otlt/alliance/training\\_publichealthnursing.php](http://sph.bu.edu/otlt/alliance/training_publichealthnursing.php)

To view the archive select the session you wish to view, click on the right facing arrow below the large black viewing box and the video will play.

- You can also access the archive link and the PP slides on the MAPHN website at <http://www.maphn.org/nea2012>

THANK YOU !

