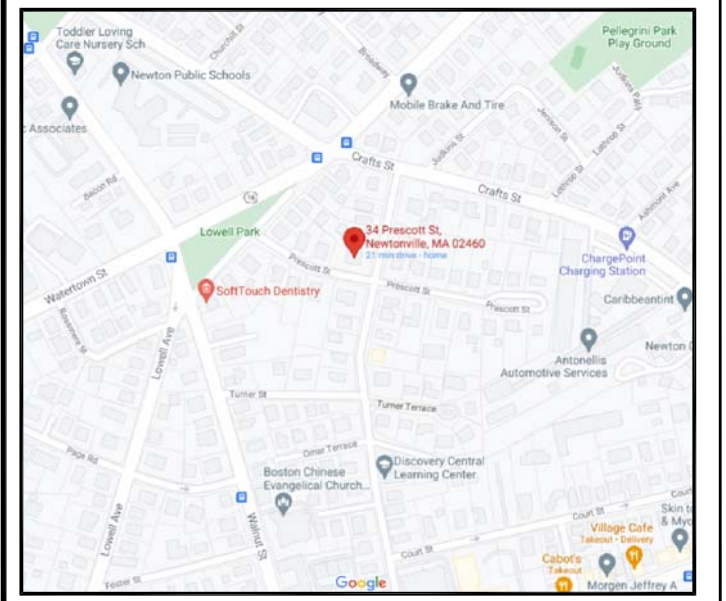


Civil Site Plan

34 Prescott St.
Newton, MA



INFILTRATION SYSTEM NOTES:
 FOUR (4) STORMTECH SC 740 CHAMBER IN 16.7x11.0x3.5' CRUSHED STONE BED TOS 55.0±, INV. 54.0, BOS 51.5±

2 Chambers/Row = 16.68' Base Length
 2 Rows = 11.00' Base Width
 Height = 3.50' Field Height
 4 Chambers = 189.4 cf Chamber Storage
 45.2' cf Stone x 40.0% Voids = 181.1 cf Stone Storage
 Chamber Storage + Stone Storage = 370.5 cf Overall
 Overall System Size = 16.68' x 11.00' x 3.50'

EXIST. AREAS

House:	2,570 SF
Garage:	1,200
Walk:	350
Driveway:	7,420 SF
Landscaped:	2,655
Total Site:	10,075 SF

PROP. AREAS

House:	2,570 SF
Garage:	1,200
Walk:	600
Parking:	1,075
Driveway:	8,370 SF
Landscaped:	1,705
Total Site:	10,075 SF

Net increase in impervious area = 950 sf

MATERIALS:
 ROOF DRAINS: 4" & 6" PVC ASTM D3034-SDR 35
 SEWER: 6" PVC ASTM D3034-SDR 35
 WATER: 1" COPPER TUBING TYPE K (MINIMUM OF 5 FEET BELOW GRADE)

REFERENCE MATERIAL:
 • Survey: Davod Terezoni, PLS #38720
 • Architect:
 • Landscape Architect:

No.	Date	Comment

Columbia Design Group, LLC
 Consulting Engineers

14 Upham Avenue
 Boston, MA 02125
 (T) 617.506.1474 (F) 617.507.7740

34 Prescott St.
 Newton

Date: July 30, 2021 Scale: 1" = 20'

Project No.: 2021-135 Drawing by: PG

C-1
 SH 1 of 1



GENERAL NOTES

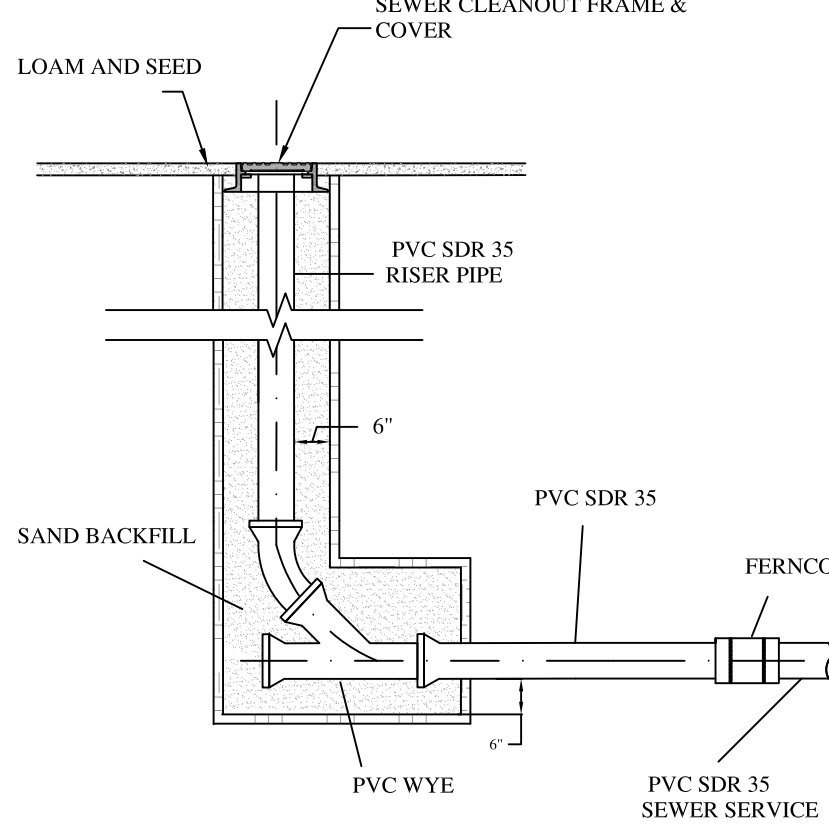
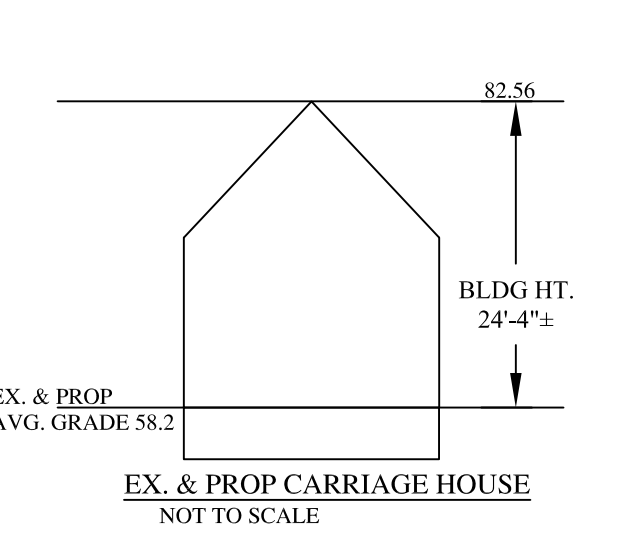
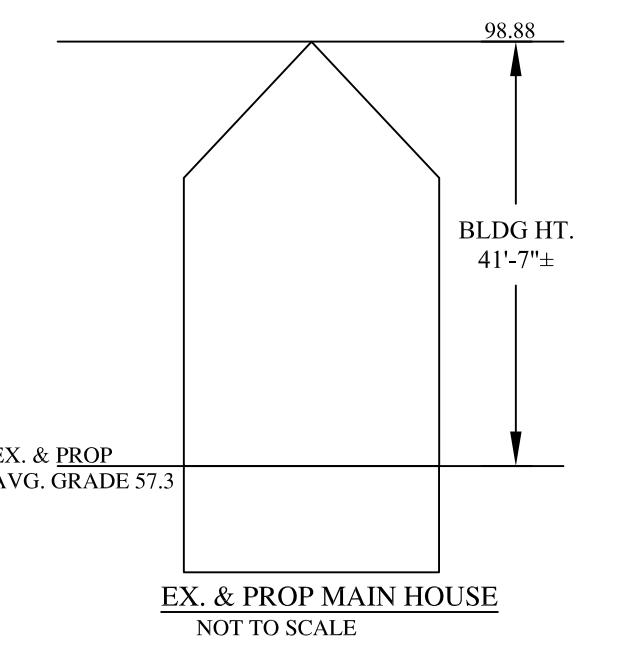
- THIS PLAN IS FOR THE PROPOSED STORM DRAINAGE SYSTEM AND UTILITIES ASSOCIATED WITH THE RENOVATION OF THE EXISTING HOUSE AND GARAGE. FOR ADDITIONAL INFORMATION PLEASE SEE THE LANDSCAPE AND ARCHITECTURAL PLANS.
- THIS PLAN DOES NOT NECESSARILY DEPICT THE EXACT LOCATION OR SIZE OF EXISTING UTILITIES ON THE SITE OR WITHIN THE STREET. IT IS THE CONTRACTOR'S RESPONSIBILITY FOR VERIFYING AND RECORDING THE LOCATION OF EACH UTILITY.
- THE CONTRACTOR SHALL CONTACT THE CITY OF NEWTON FOR THE MARKING OF EXISTING MUNICIPAL UTILITIES, AND SHALL ALSO CONTACT DIG-SAFE AT 1-888-344-7233, FAX 1-800-322-4844. DIG-SAFE MUST BE NOTIFIED AT LEAST 72 HOURS PRIOR TO EXCAVATION.
- ALL WORK SHALL CONFORM TO THE STANDARD SPECIFICATIONS OF THE CITY OF NEWTON. THE CONTRACTOR IS RESPONSIBLE FOR ENSURING CONSTRUCTION FOLLOWS STATE AND FEDERAL REGULATIONS.
- THE CONTRACTOR SHALL SUPPLY ALL PIPING, STRUCTURES, MATERIALS, AND APPURTENANCES, NECESSARY TO COMPLETE THE PROPOSED STORM DRAIN SYSTEM AS INDICATED ON THE PLANS.
- THE RESPONSIBILITY, OWNERSHIP AND MAINTENANCE OF THE DRAINAGE SYSTEM AND APPURTENANCES ON PRIVATE PROPERTY SHALL REMAIN THAT OF THE OWNER.
- DURING EXCAVATION AND CONSTRUCTION OF PIPES AND STRUCTURES, TRENCHES MUST BE ADEQUATELY BRACED TO PROTECT AGAINST CAVE-IN. AS OF JANUARY 1, 2009, ALL TRENCH EXCAVATION CONTRACTORS SHALL COMPLY WITH MASS. GENERAL LAW CH. 82A, TRENCH EXCAVATION SAFETY REQUIREMENTS. TRENCH EXCAVATION PERMIT IS REQUIRED.
- WITH THE EXCEPTION OF GAS UTILITY SERVICES, ALL UTILITY TRENCHES WITHIN ANY CITY OF NEWTON RIGHT-OF-WAY WILL BE BACKFILLED WITH TYPE I.E. (EXCAVATABLE) CONTROLLED DENSITY FILL, AS SPECIFIED BY THE CITY OF NEWTON ENGINEERING SPECIFICATIONS.
- THE APPLICANT WILL HAVE TO APPLY FOR A STREET OPENING & UTILITIES CONNECTION PERMITS AS WELL AS A SIDEWALK CROSSING PERMIT WITH THE CITY.
- NO EXCAVATION IS ALLOWED WITHIN ANY CITY RIGHT-OF-WAY BETWEEN NOVEMBER 15TH AND APRIL 15TH.
- THE CONTRACTOR NEEDS TO NOTIFY THE ENGINEERING DIVISION 48 HOURS IN ADVANCE AND SCHEDULE AN APPOINTMENT TO HAVE THE DRAINAGE SYSTEM INSPECTED. THE SYSTEM & UTILITIES MUST BE FULLY EXPOSED FOR THE INSPECTOR. ONCE THE INSPECTOR IS SATISFIED, THE SYSTEM & UTILITIES MAY THEN BE BACK-FILLED.
- ENGINEER OF RECORD MUST INSPECT ALL COMPONENTS OF CONSTRUCTION, INCLUDING BUT NOT LIMITED TO: WATER & SEWER SERVICE INSTALLATION (INCLUDING CONFIRMING SLOPE OF SEWER SERVICE), ALL DRAINAGE PIPING, MANHOLES/TRENCH DRAINS AND RECHARGE SYSTEMS. ENGINEER OF RECORD MUST ALSO CONDUCT A "BOTTOM OF HOLE" INSPECTION PRIOR TO SUBSURFACE DRAINAGE SYSTEMS ARE INSTALLED. THE AS-BUILT MUST SHARE DIMENSIONAL TIES TO ALL SUBSURFACE COMPONENTS. THE AS-BUILT WILL BE STAMPED, SIGNED AND DATED BY THE ENGINEER OF RECORD. THE FOLLOWING STATEMENT MUST BE ON ALL AS-BUILT PLANS SUBMITTED TO THE ENGINEERING DIVISION:
 THE FOLLOWING STATEMENT MUST BE ON ALL AS-BUILT PLANS SUBMITTED TO THE ENGINEERING DIVISION:

"I, or a qualified person in my employ has conducted the required on-site inspections, and I certify that the construction so shown conforms with the Approved Plan and meets or exceeds the City of Newton Construction Standards.
 Prior to the issuance of an Occupancy Permit, an As-Built Plan must be submitted to the Engineering Division in both digital format and in hard copy. The plan must show all utilities and drainage components (utilizing swing ties), any easements and final grading. Engineer of Record must sign and stamp As-Built plan."

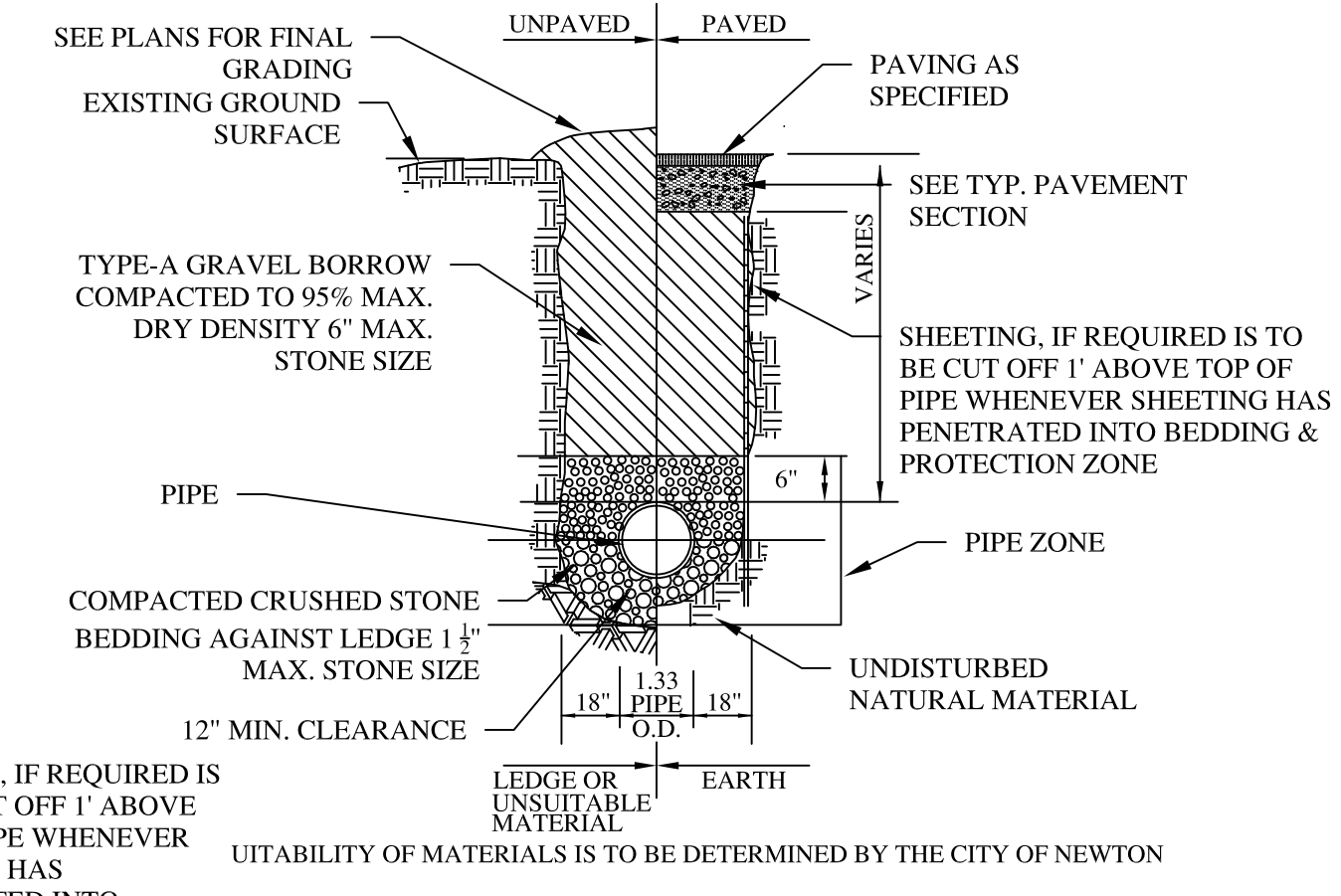
- IF A CERTIFICATE OF OCCUPANCY IS REQUESTED PRIOR TO ALL SITE WORK BEING COMPLETED, THE APPLICANT WILL BE REQUIRED TO POST A CERTIFIED BANK CHECK IN THE AMOUNT TO COVER THE REMAINING WORK. THE CITY ENGINEER SHALL DETERMINE THE VALUE OF THE UNCOMPLETED WORK.
- APPROVAL OF THE PLAN BY THE CITY OF NEWTON ENGINEERING DIVISION IMPLIES THAT THE PLAN MEETS THE MINIMAL DESIGN STANDARDS OF THE CITY OF NEWTON. HOWEVER, THE ENGINEERING DIVISION MAKES NO REPRESENTATIONS AND ASSUMES NO RESPONSIBILITY FOR THE DESIGN IN TERMS OF SUITABILITY FOR THE PARTICULAR SITE CONDITIONS OR OF THE FUNCTIONALITY OR PERFORMANCE OF ANY ITEMS CONSTRUCTED IN ACCORDANCE WITH THE DESIGN. THE CITY OF NEWTON ASSUMES NO LIABILITIES FOR THE DESIGN ASSUMPTION, ERRORS OR OMISSIONS BY THE ENGINEER OF RECORD.
- THE NEW SEWER SERVICE AND/OR STRUCTURES SHALL BE PRESSURE TESTED OR VIDEOTAPE AFTER FINAL INSTALLATION IS COMPLETE. METHOD OF FINAL INSPECTION SHALL BE DETERMINED SOLELY BY THE CONSTRUCTION INSPECTOR FROM THE CITY ENGINEERING DIVISION. THE SEWER SERVICE WILL NOT BE ACCEPTED UNTIL ONE OF THE TWO METHODS STATED ABOVE IS COMPLETED. A CERTIFICATE OF OCCUPANCY WILL NOT BE RECOMMENDED UNTIL THIS TEST IS COMPLETED AND THE CITY ENGINEER RECEIVES A WRITTEN REPORT.
- THE CONTRACTOR MUST PROVIDE POLICE DETAILS, SCHEDULED 48 HOURS IN ADVANCE, FOR THE DIRECTION AND CONTROL OF TRAFFIC, AS REQUIRED BY THE CITY ENGINEER. ALL ROADS AFFECTED BY CONSTRUCTION SHALL REMAIN OPEN TO EMERGENCY VEHICLES AT ALL TIMES. CONTRACTOR IS TO COORDINATE WITH POLICE AND FIRE DEPARTMENT TO ENSURE PUBLIC SAFETY.

MAIN HOUSE - AVERAGE EXISTING GRADE

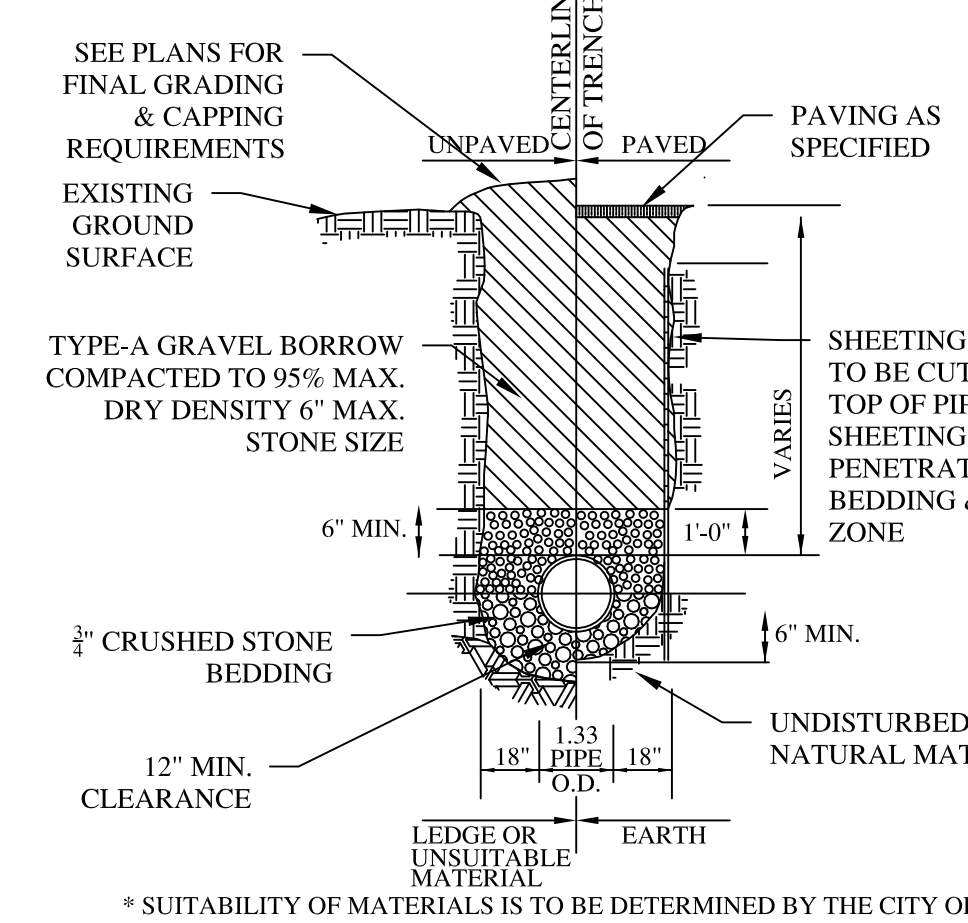
	TOTAL / 2 LENGTH	TOTAL / 2 * LENGTH
A	57.2	31.4
B	57.8	26.7
C	57.0	22.0
D	57.4	45.0
E	57.0	23.0
A	57.2	31.4
TOTAL		8483.8
PERIMETER		148.1
AVERAGE GRADE		57.3



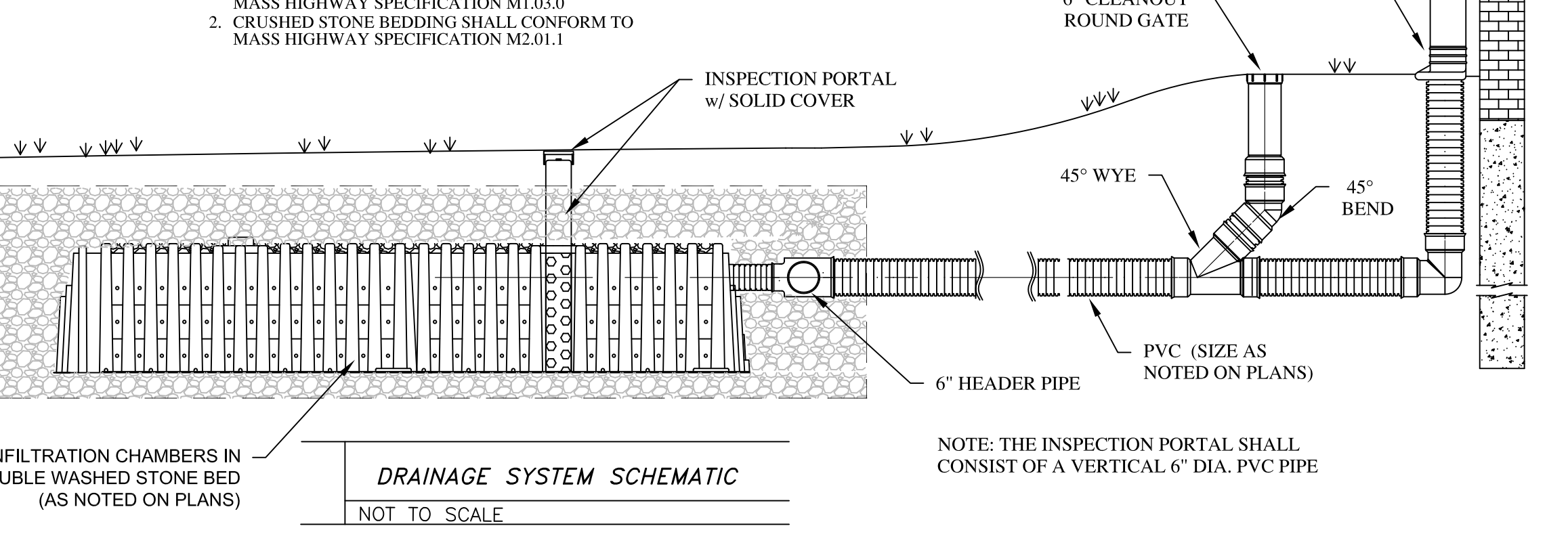
SEWER CLEANOUT
 NOT TO SCALE



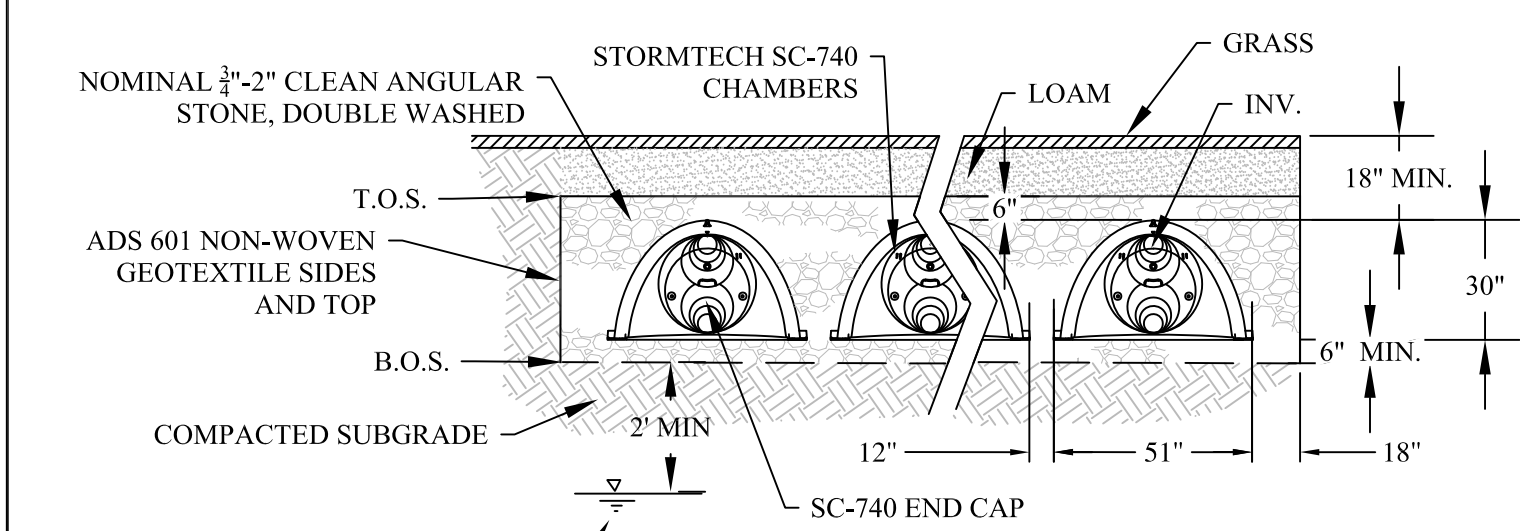
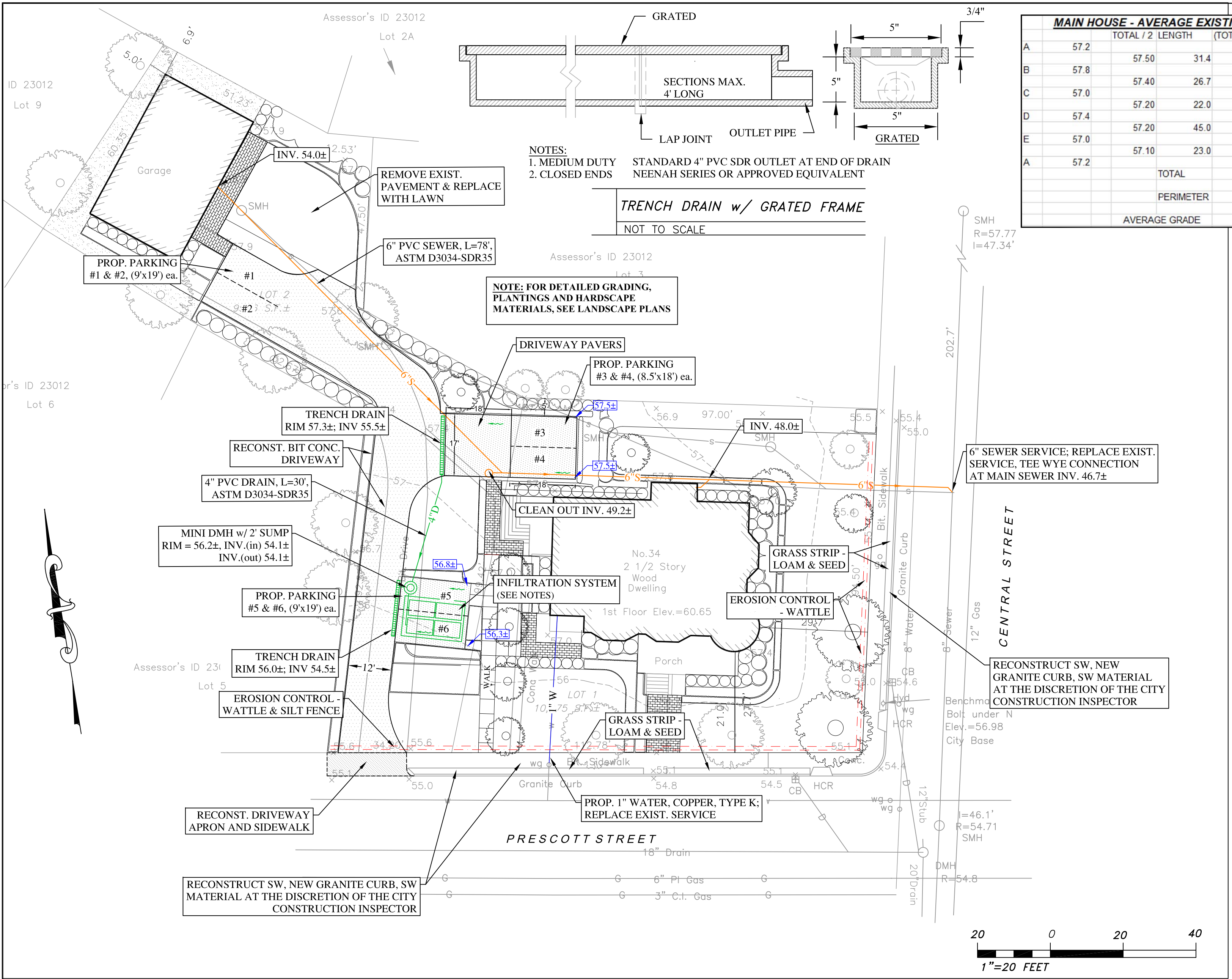
TYPICAL WATER TRENCH
 NOT TO SCALE



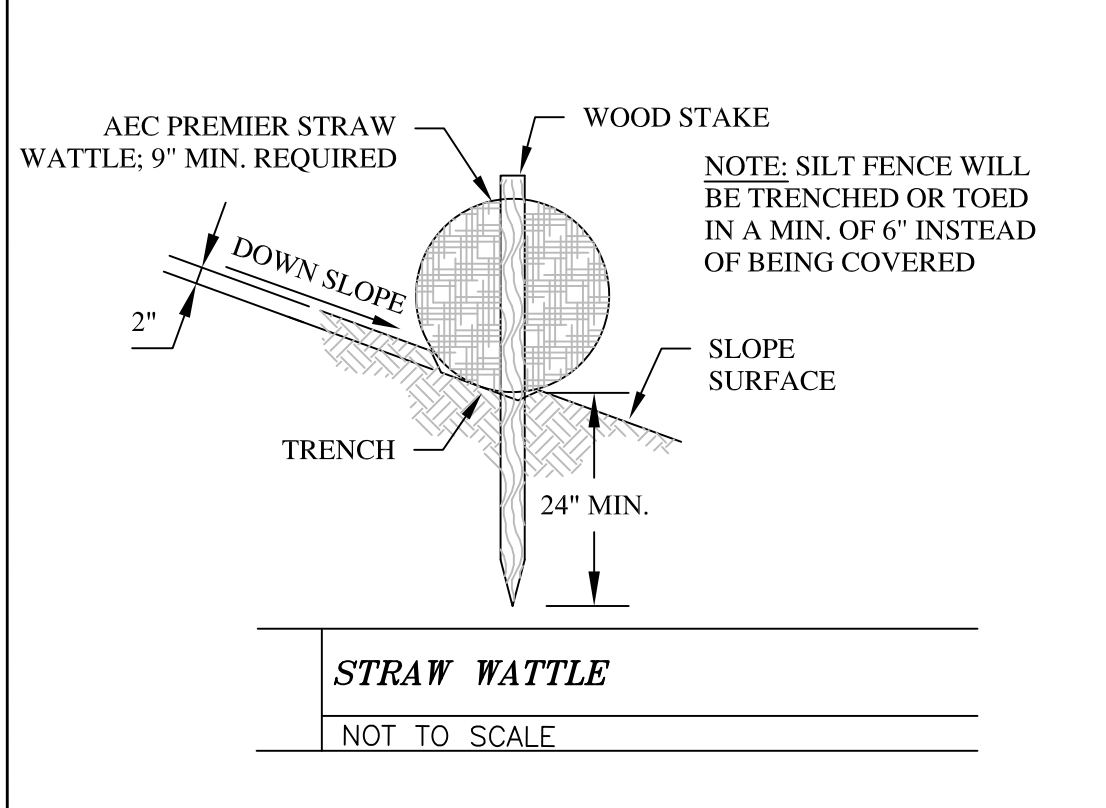
GRAVITY SEWER TRENCH
 NOT TO SCALE



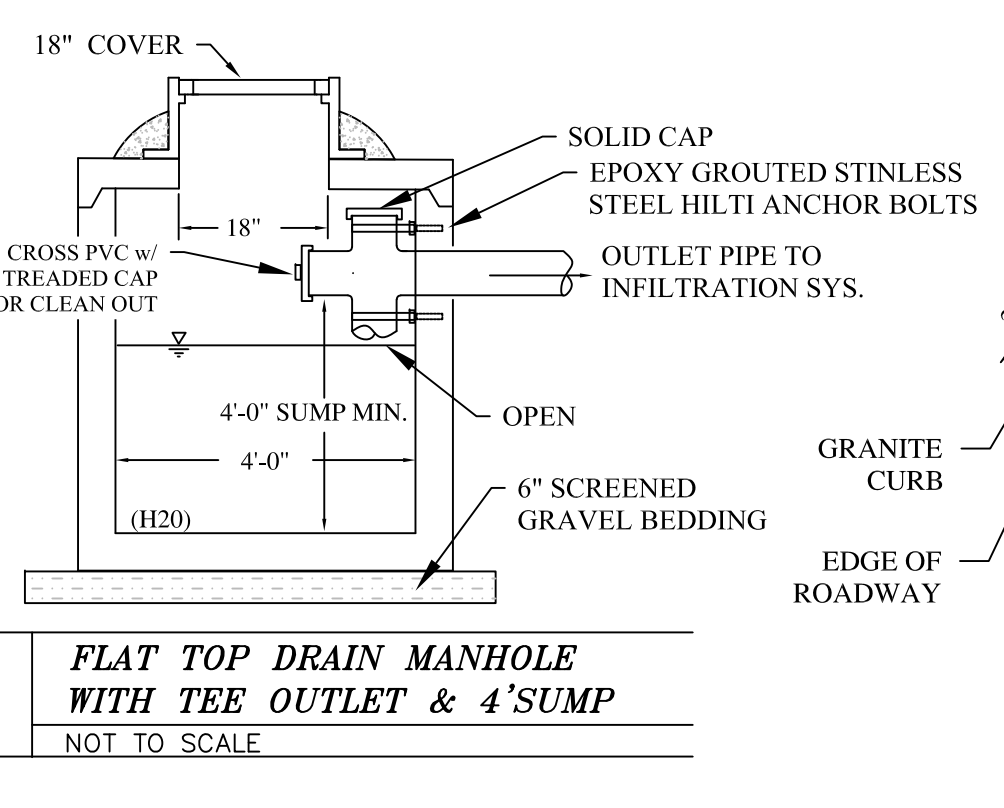
DRAINAGE SYSTEM SCHEMATIC
 NOT TO SCALE



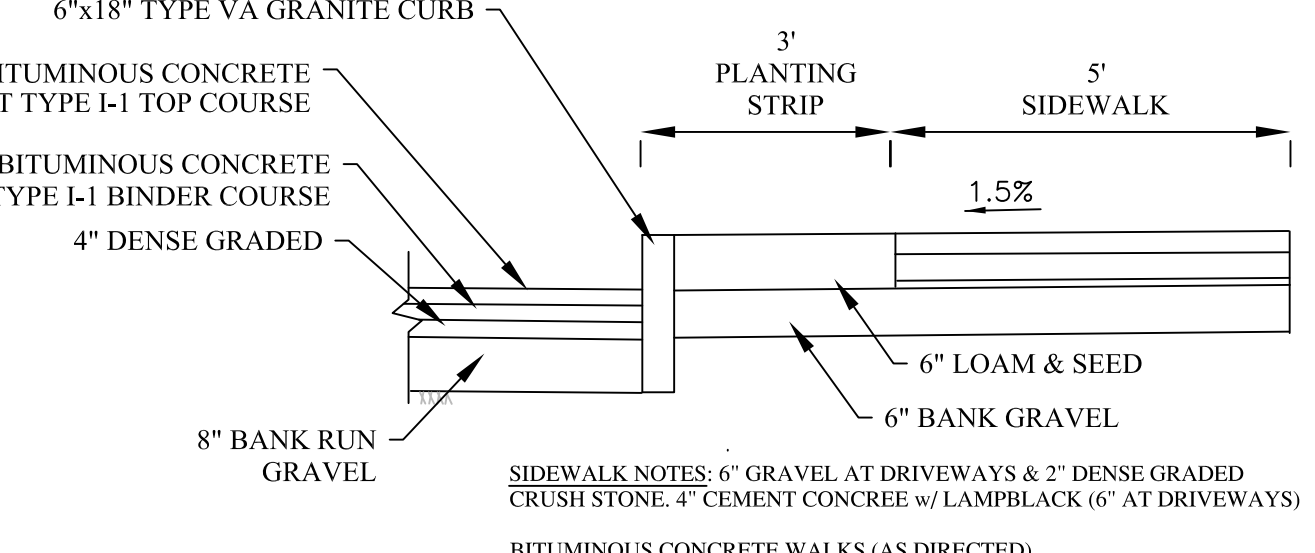
STORMTECH SC 740 SECTION
 NOT TO SCALE



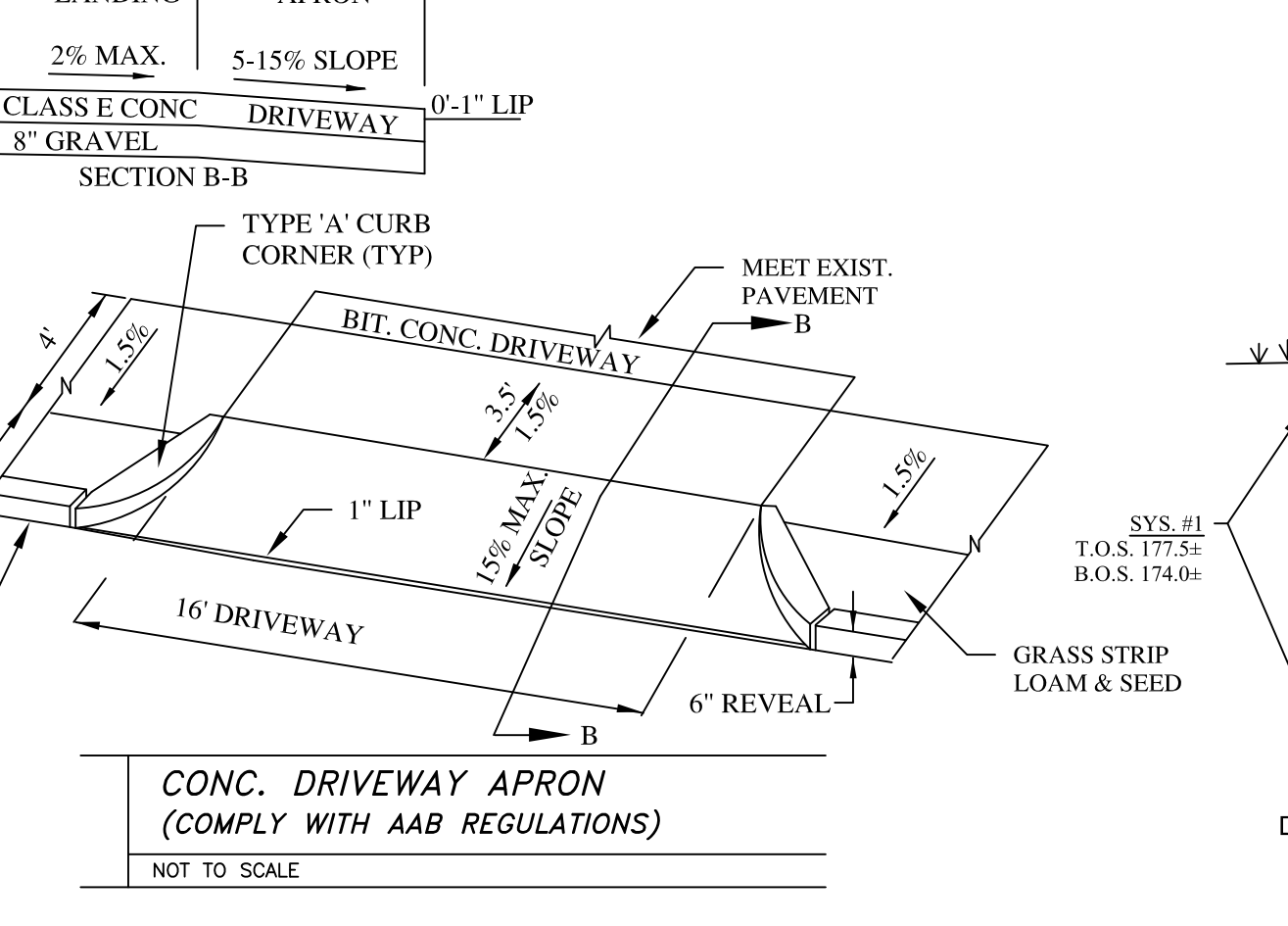
STRAW WATTLE
 NOT TO SCALE



FLAT TOP DRAIN MANHOLE WITH TEE OUTLET & 4\"/>



TYPICAL SIDEWALK DETAIL (SEE CITY STANDARD)
 NOT TO SCALE



CONC. DRIVEWAY APRON (COMPLY WITH AAB REGULATIONS)
 NOT TO SCALE



20

Columbia Design Group, LLC